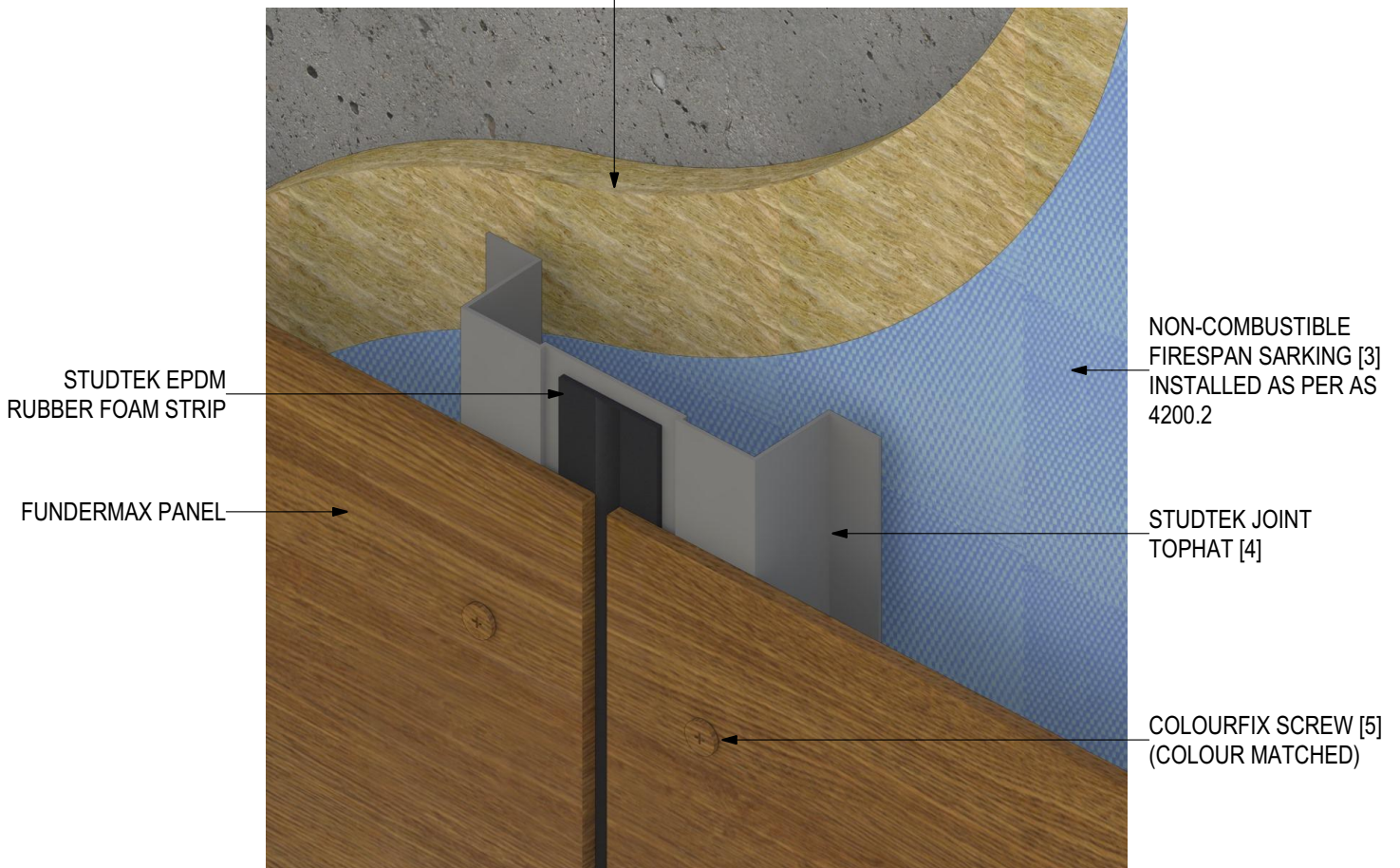




## INSTALLATION DETAILS

### FUNDERMAX High Pressure Laminate Panel (V0323)

OPTIONAL EXTERIOR INSULATION ZONE WITH BICEP FACADE SYSTEM [1] AND NON-COMBUSTIBLE IROCK INSULATION [2] (SEE SEPERATE DETAILS)



## SYSTEM COMPONENTS

BICEP FACADE SYSTEM [1]



IROCK INSULATION [2]



FIRESAN SARKING [3]



STUDEK TOPHAT [4]



COLOURFIX SCREWS [5]

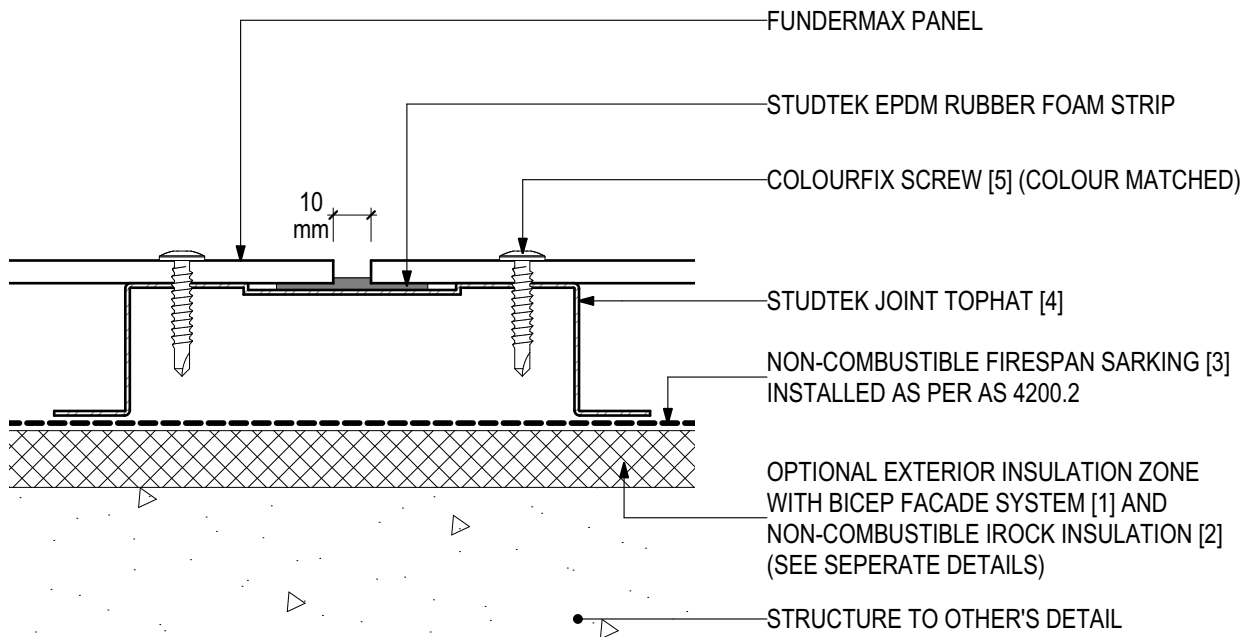


PROLASTIK SEALANT [6]





**D.01 - TYPICAL FIXING DETAIL (SCALE 1:2)**  
FUNDERMAX High Pressure Laminate Panel (V0323)



**SYSTEM COMPONENTS**

BICEP FACADE SYSTEM [1]



IROCK INSULATION [2]



FIRESPAN SARKING [3]



STUDTEK TOPHAT [4]



COLOURFIX SCREWS [5]

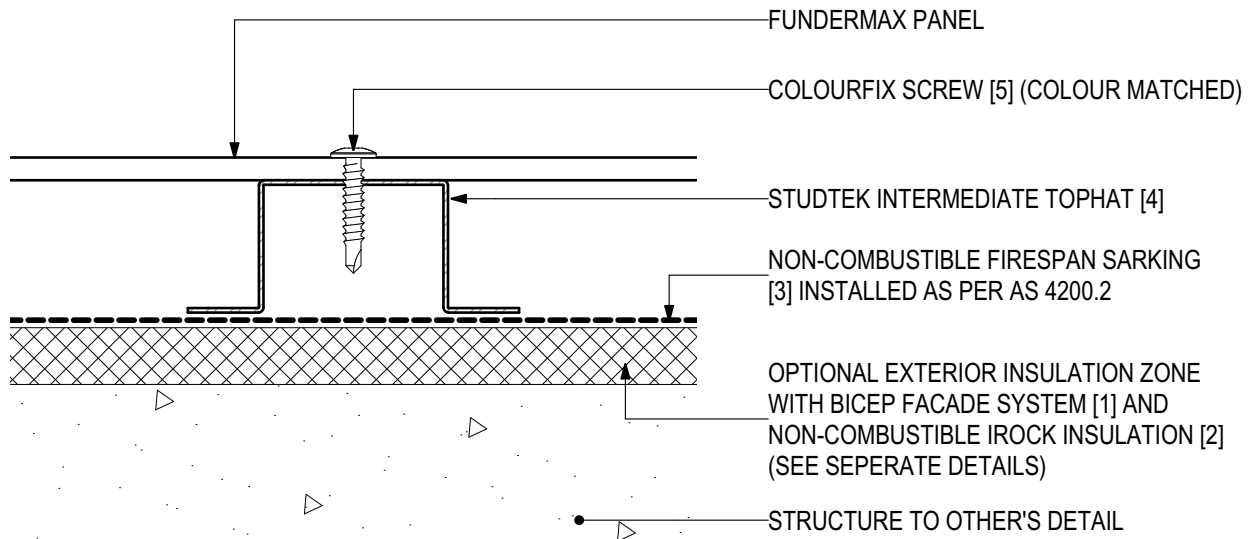


PROLASTIK SEALANT [6]





**D.02 - INTERMEDIATE DETAIL (SCALE 1:2)**  
FUNDERMAX High Pressure Laminate Panel (V0323)



**SYSTEM COMPONENTS**

BICEP FACADE SYSTEM [1]



IROCK INSULATION [2]



FIRESpan SARKING [3]



STUDEK TOPHAT [4]



COLOURFIX SCREWS [5]



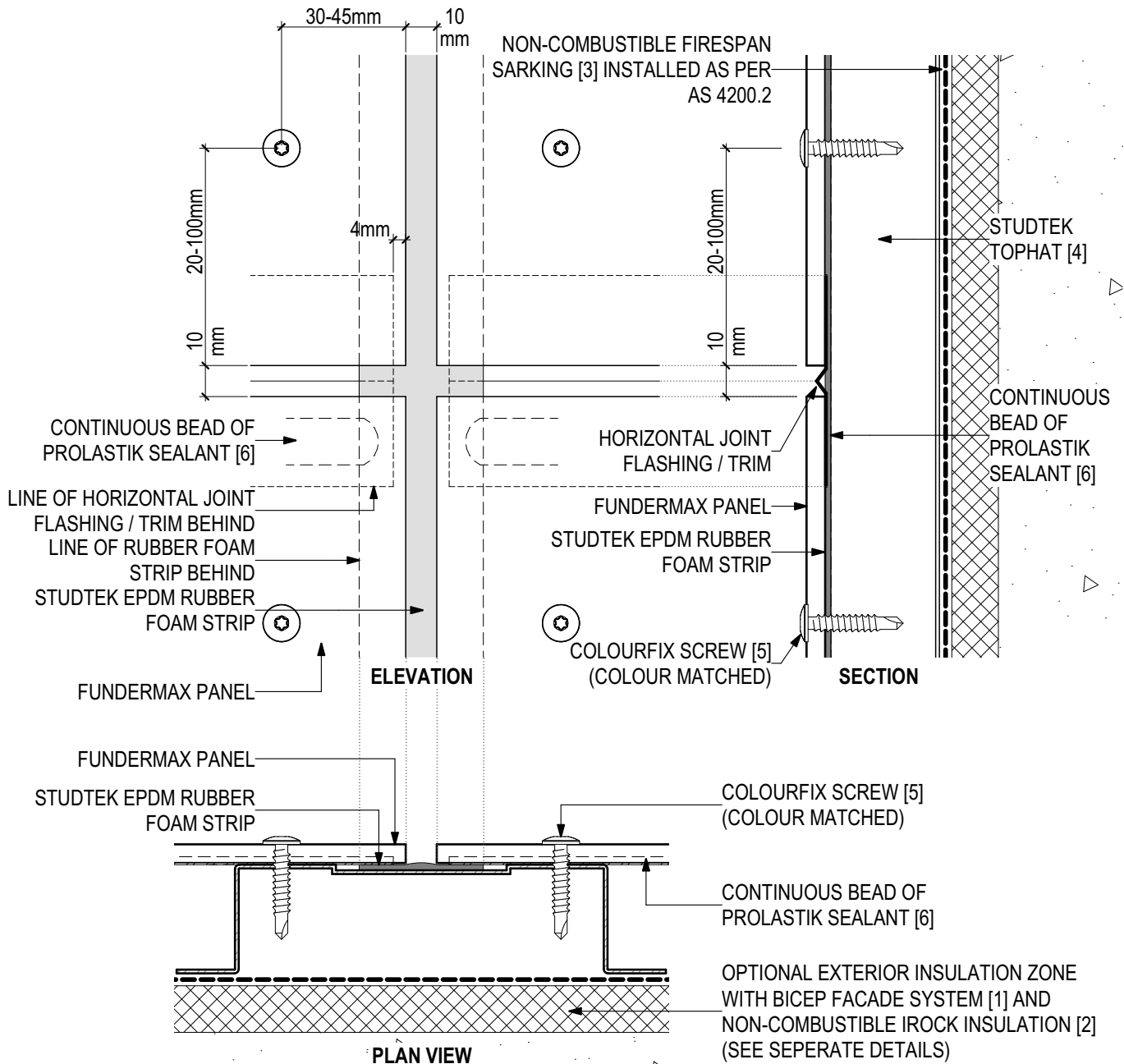
PROLASTIK SEALANT [6]





## D.03 - EXPRESSED JOINT DETAIL (SCALE 1:2)

### FUNDERMAX High Pressure Laminate Panel (V0323)



## SYSTEM COMPONENTS

BICEP FACADE SYSTEM [1]



IROCK INSULATION [2]



FIRESPAN SARKING [3]



STUDEK TOPHAT [4]



COLOURFIX SCREWS [5]



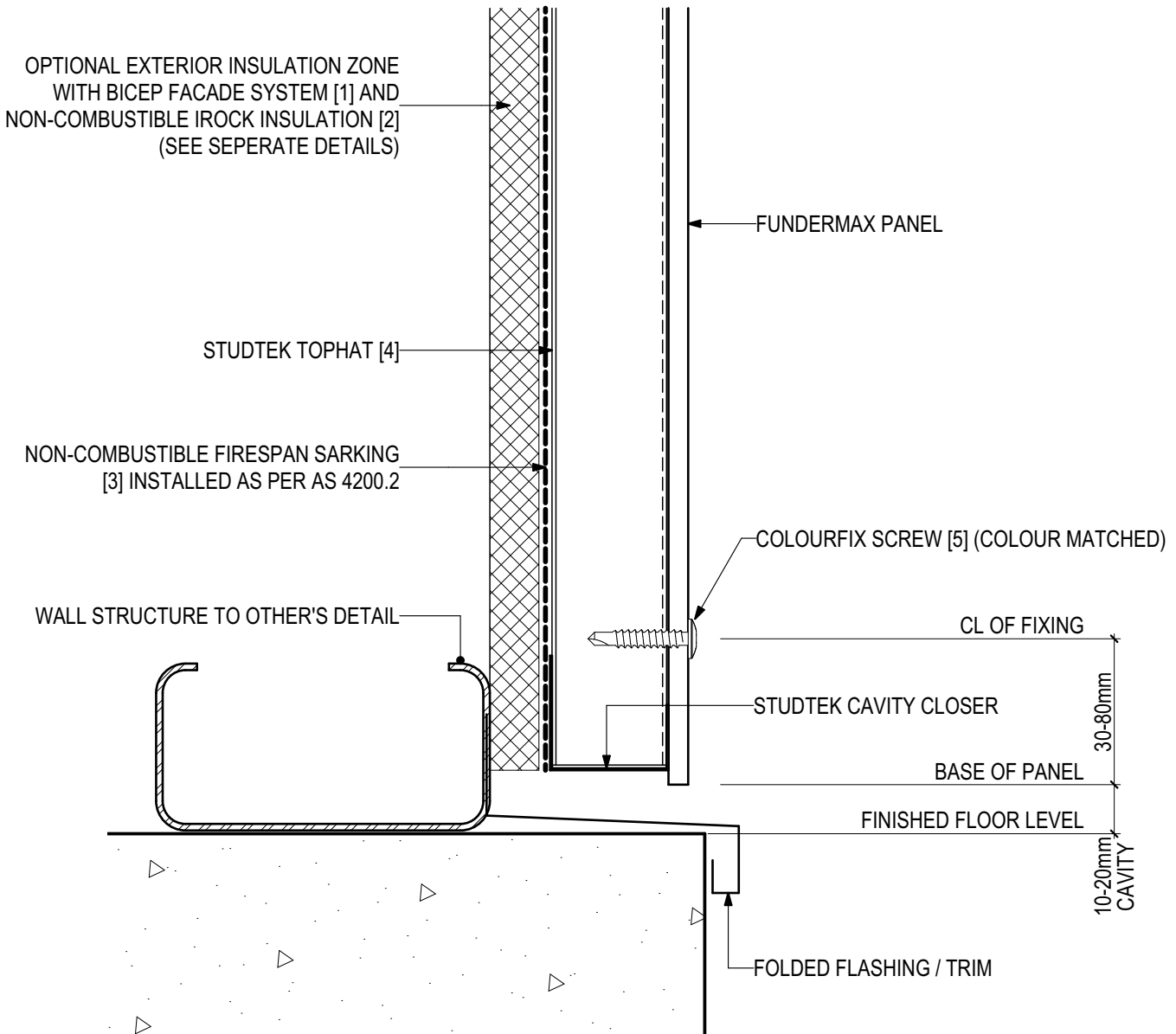
PROLASTIK SEALANT [6]





## D.04 - BASE DETAIL (SCALE 1:2)

### FUNDERMAX High Pressure Laminate Panel (V0323)



## SYSTEM COMPONENTS

BICEP FACADE SYSTEM [1]



IROCK INSULATION [2]



FIRESpan SARKING [3]



STUDEK TOPHAT [4]



COLOURFIX SCREWS [5]

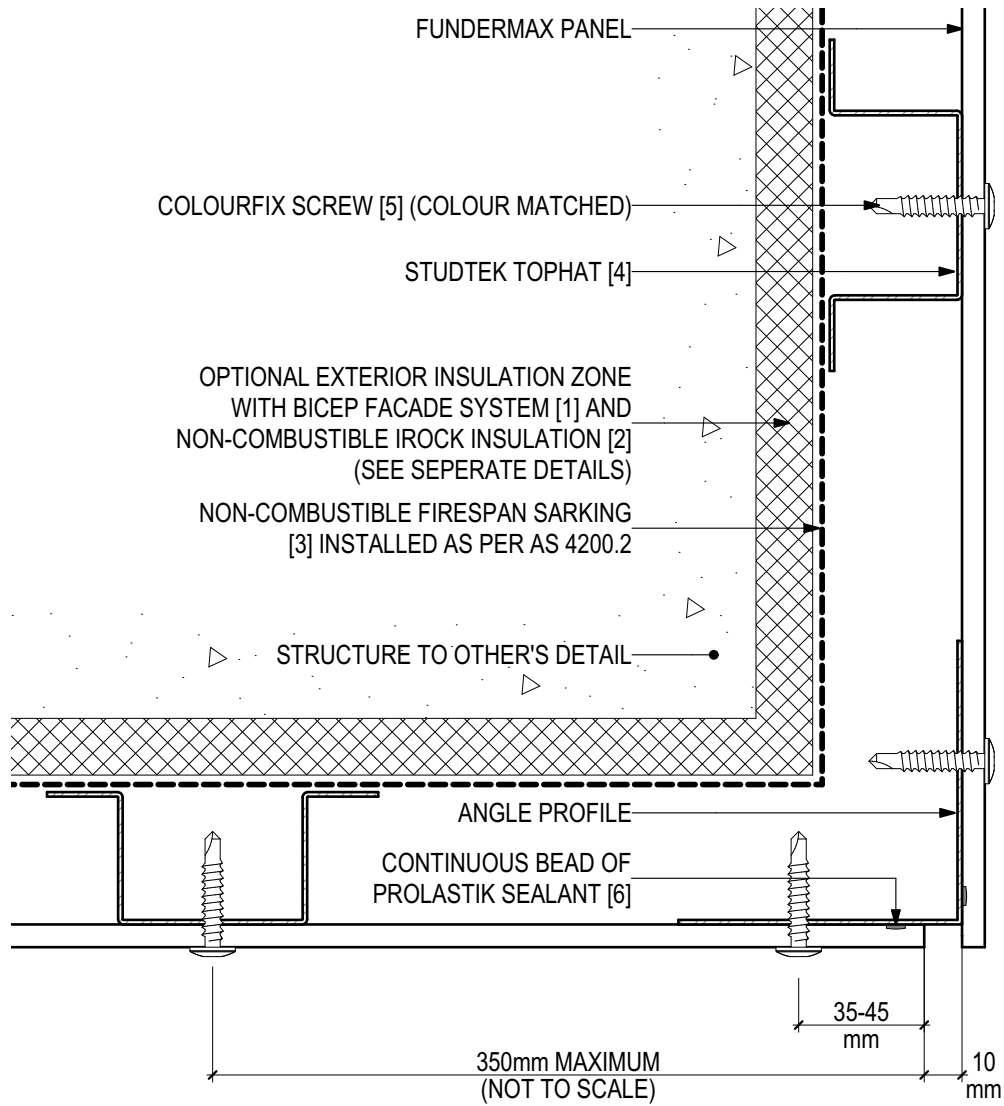


PROLASTIK SEALANT [6]





**D.05 - EXTERNAL CORNER (SCALE 1:2)**  
FUNDERMAX High Pressure Laminate Panel (V0323)



**SYSTEM COMPONENTS**

BICEP FACADE SYSTEM [1]



IROCK INSULATION [2]



FIRESPAN SARKING [3]



STUDEK TOPHAT [4]



COLOURFIX SCREWS [5]



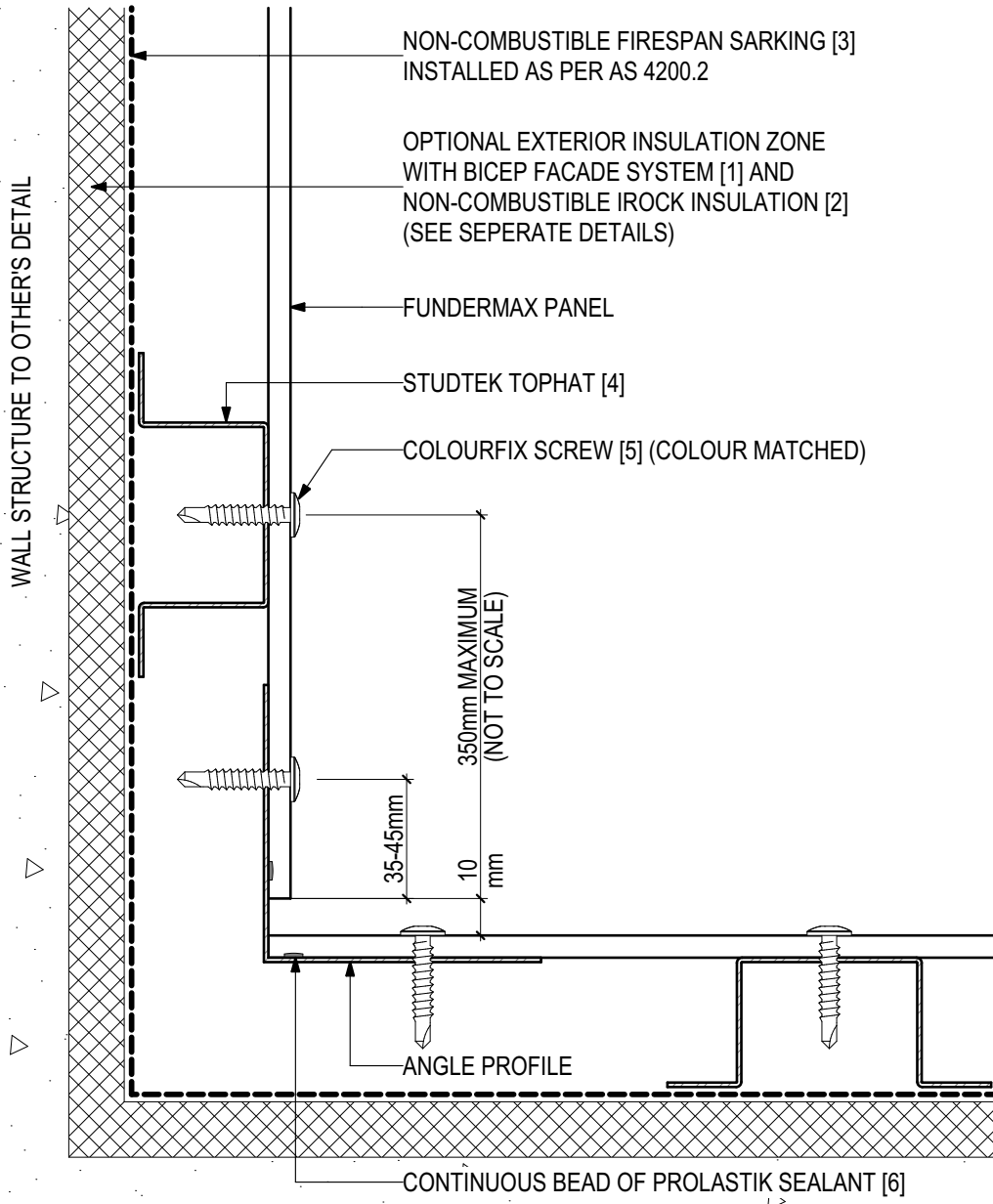
PROLASTIK SEALANT [6]





## D.06 - INTERNAL CORNER (SCALE 1:2)

### FUNDERMAX High Pressure Laminate Panel (V0323)



## SYSTEM COMPONENTS

BICEP FACADE SYSTEM [1]



IROCK INSULATION [2]



FIRESpan SARKING [3]



STUDTEK TOPHAT [4]



COLOURFIX SCREWS [5]

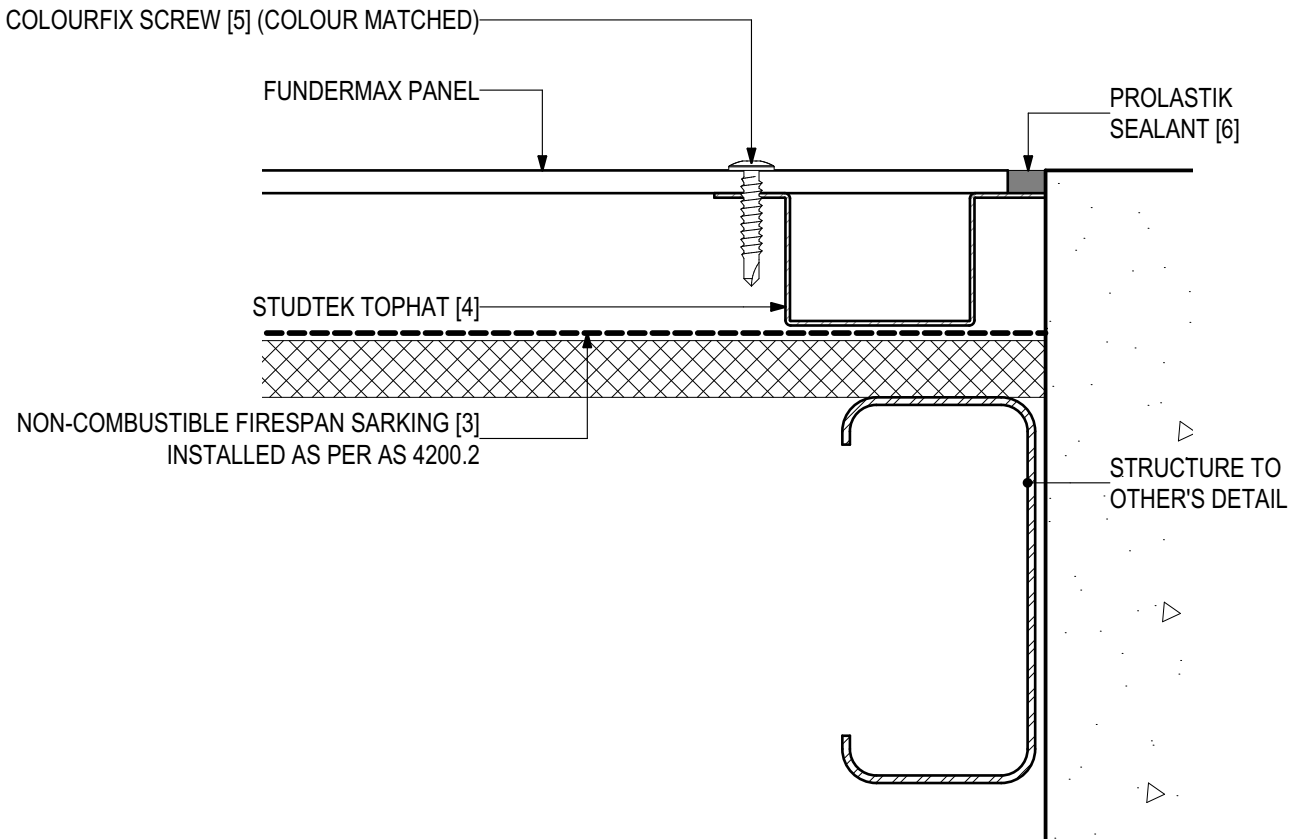


PROLASTIK SEALANT [6]





**D.07 - WALL ABUTMENT (SCALE 1:2)**  
FUNDERMAX High Pressure Laminate Panel (V0323)



**SYSTEM COMPONENTS**

BICEP FACADE SYSTEM [1]



IROCK INSULATION [2]



FIRESAN SARKING [3]



STUDTEK TOPHAT [4]



COLOURFIX SCREWS [5]



PROLASTIK SEALANT [6]

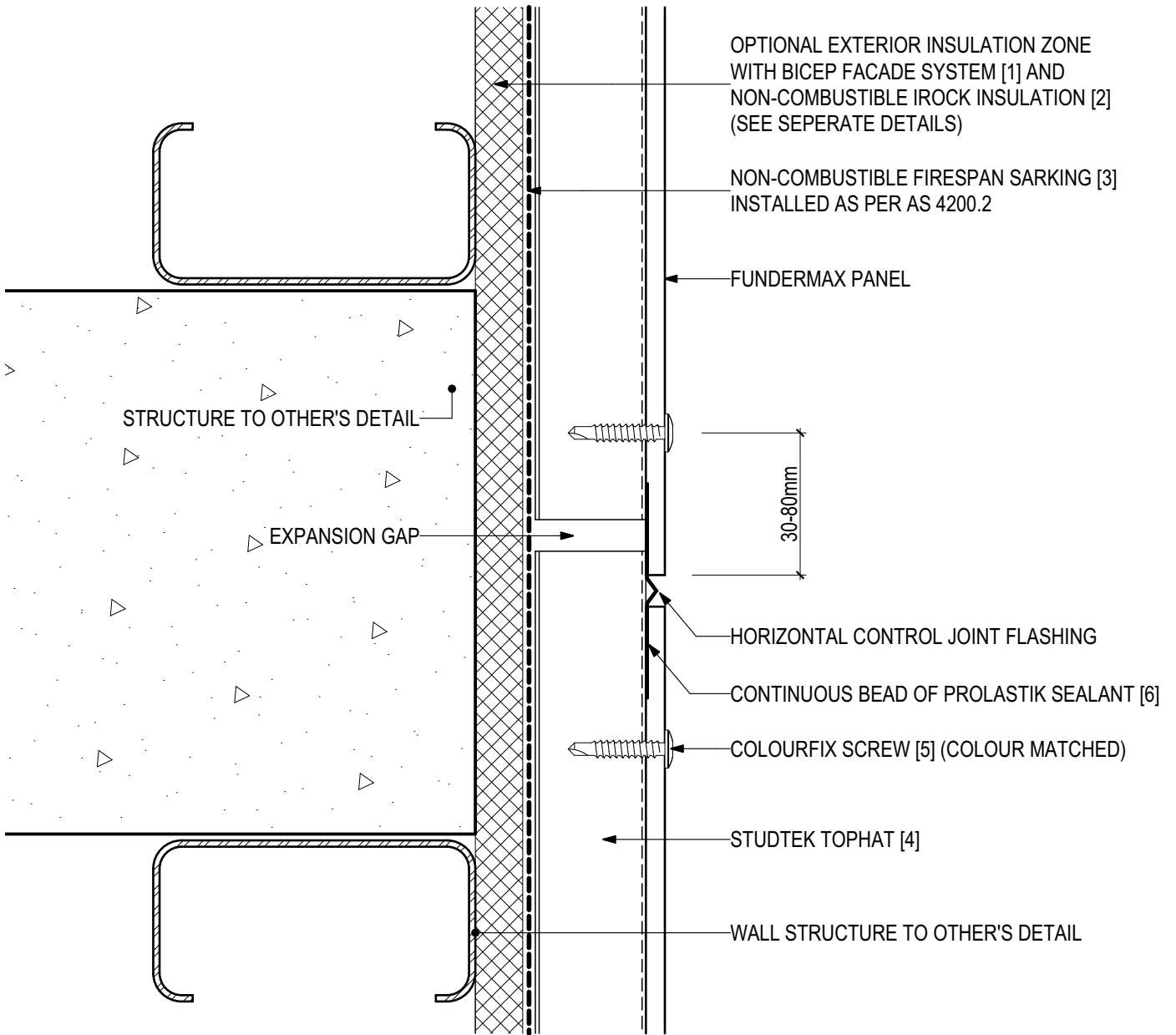






## D.08 - HORIZONTAL CONTROL JOINT (SCALE 1:2)

### FUNDERMAX High Pressure Laminate Panel (V0323)



## SYSTEM COMPONENTS

BICEP FACADE SYSTEM [1]



IROCK INSULATION [2]



FIRESPAN SARKING [3]



STUDEK TOPHAT [4]



COLOURFIX SCREWS [5]

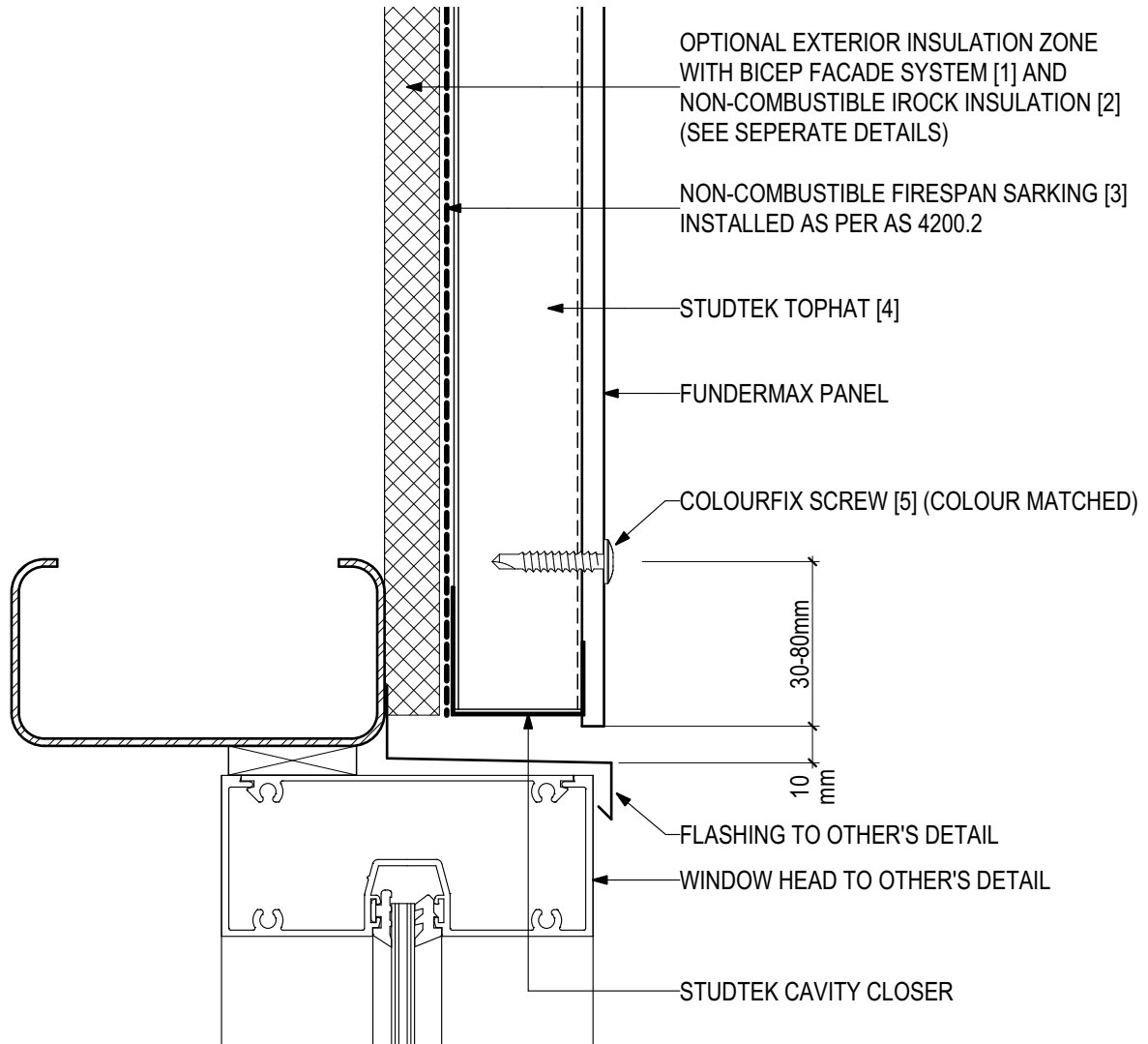


PROLASTIK SEALANT [6]





**D.09 - WINDOW HEAD (SCALE 1:2)**  
FUNDERMAX High Pressure Laminate Panel (V0323)



**SYSTEM COMPONENTS**

BICEP FACADE SYSTEM [1]



IROCK INSULATION [2]



FIRESpan SARKING [3]



STUDTEK TOPHAT [4]



COLOURFIX SCREWS [5]



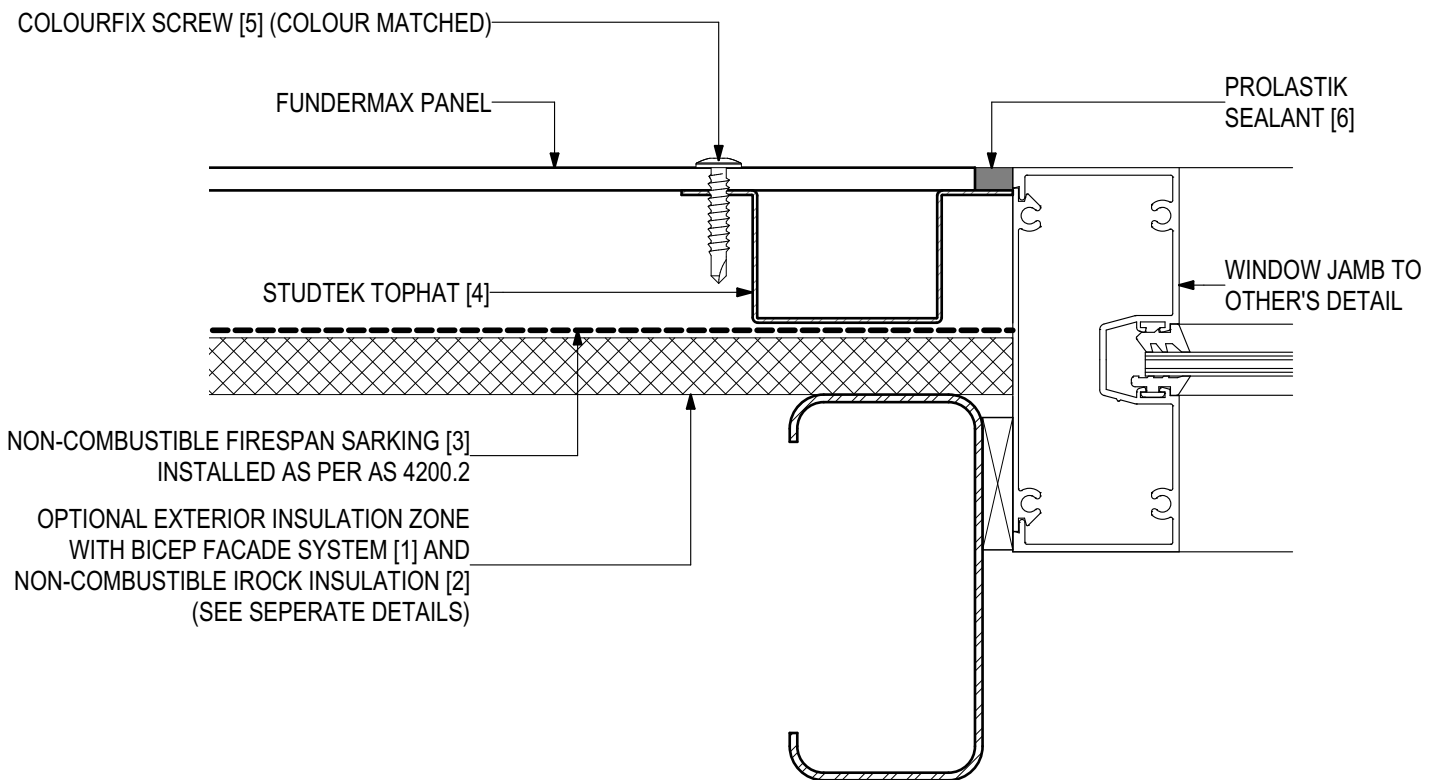
PROLASTIK SEALANT [6]





## D.10 - WINDOW JAMB (SCALE 1:2)

### FUNDERMAX High Pressure Laminate Panel (V0323)



## SYSTEM COMPONENTS

BICEP FACADE SYSTEM [1]



IROCK INSULATION [2]



FIRESpan SARKING [3]



STUDEK TOPHAT [4]



COLOURFIX SCREWS [5]

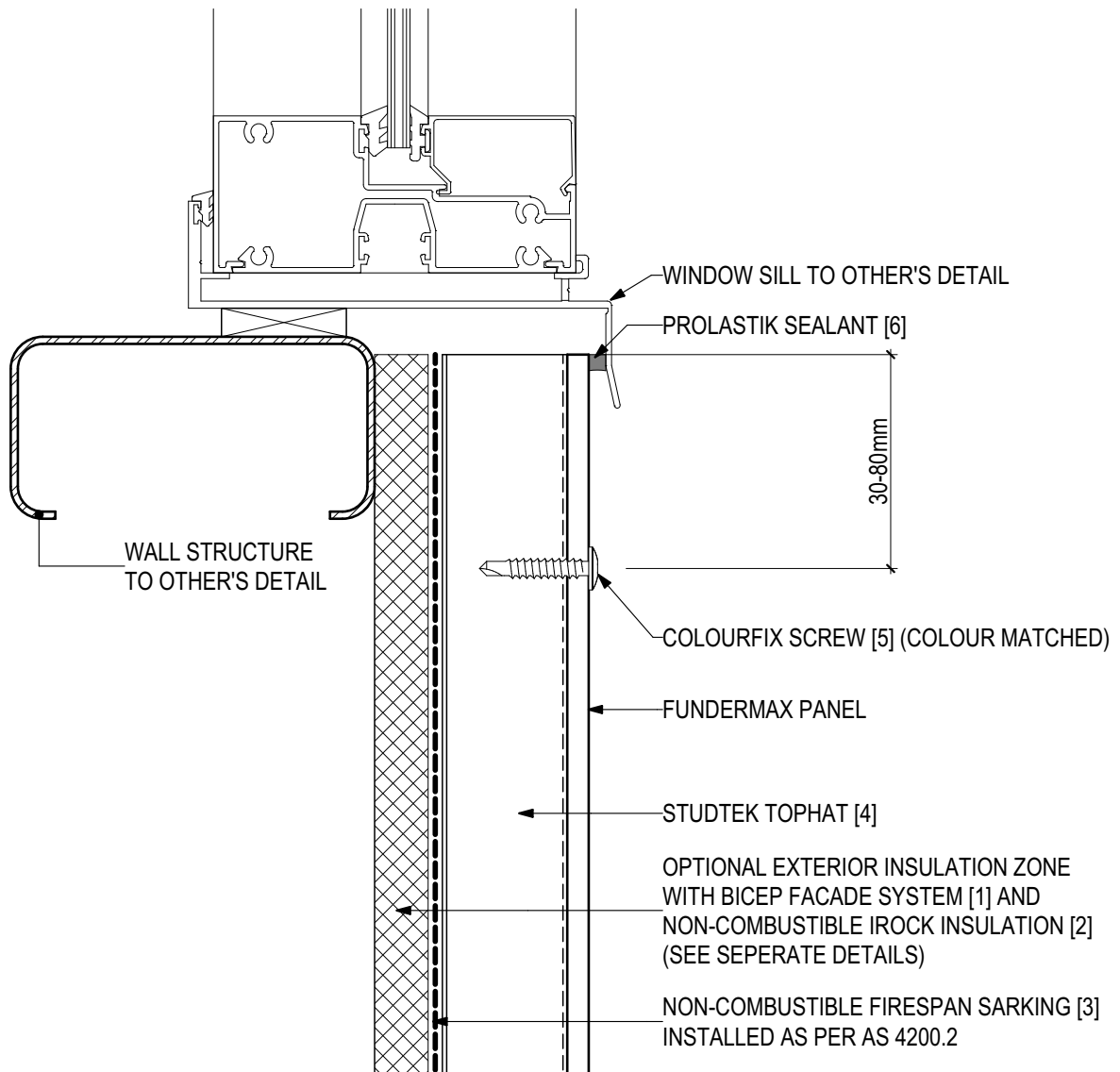


PROLASTIK SEALANT [6]





**D.11 - WINDOW SILL (SCALE 1:2)**  
FUNDERMAX High Pressure Laminate Panel (V0323)



**SYSTEM COMPONENTS**

BICEP FACADE SYSTEM [1]



IROCK INSULATION [2]



FIRESAN SARKING [3]



STUDEK TOPHAT [4]



COLOURFIX SCREWS [5]



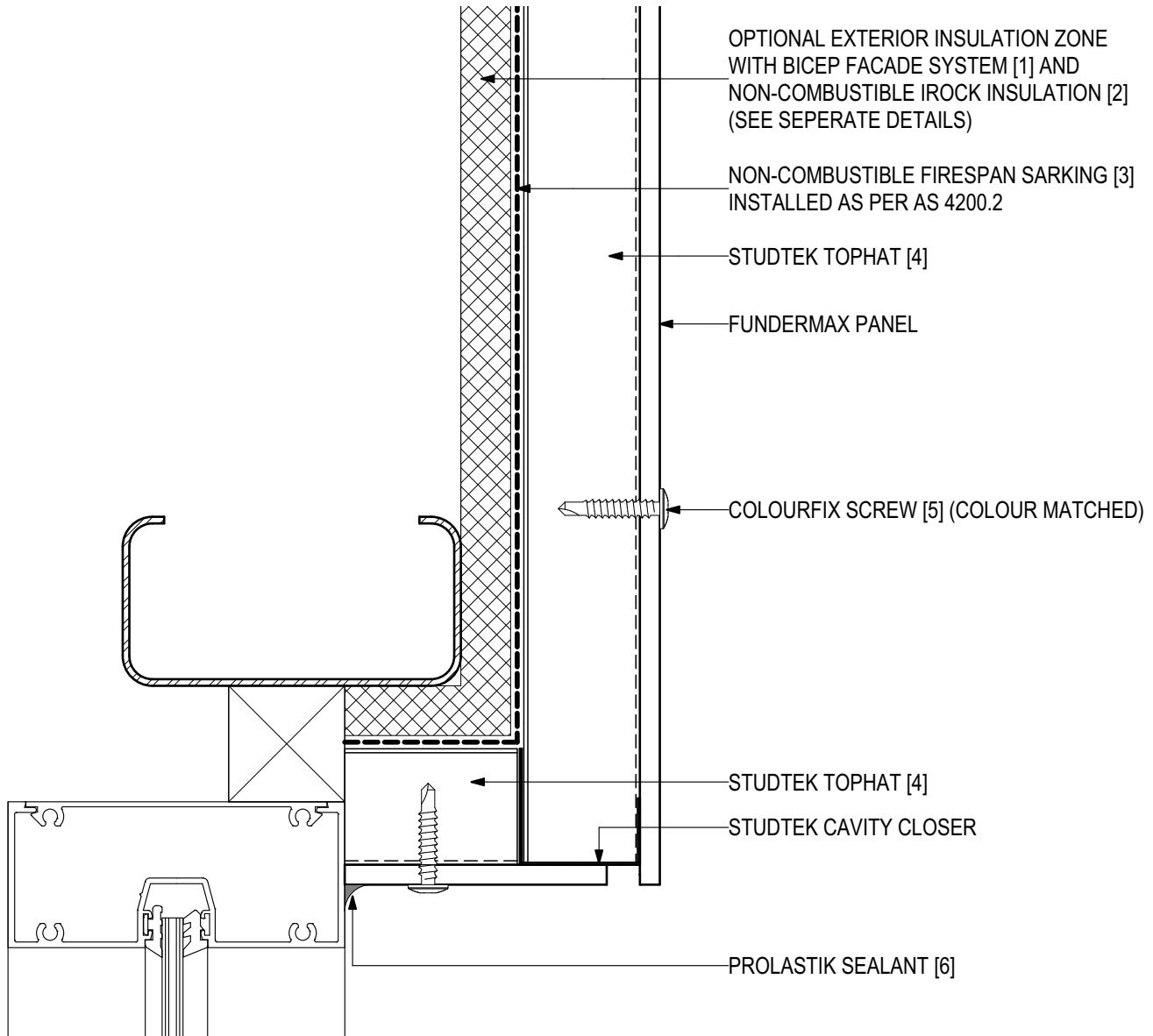
PROLASTIK SEALANT [6]





## D.12 - INSET WINDOW HEAD (SCALE 1:2)

### FUNDERMAX High Pressure Laminate Panel (V0323)



## SYSTEM COMPONENTS

BICEP FACADE SYSTEM [1]



IROCK INSULATION [2]



FIRESPAN SARKING [3]



STUDEK TOPHAT [4]



COLOURFIX SCREWS [5]



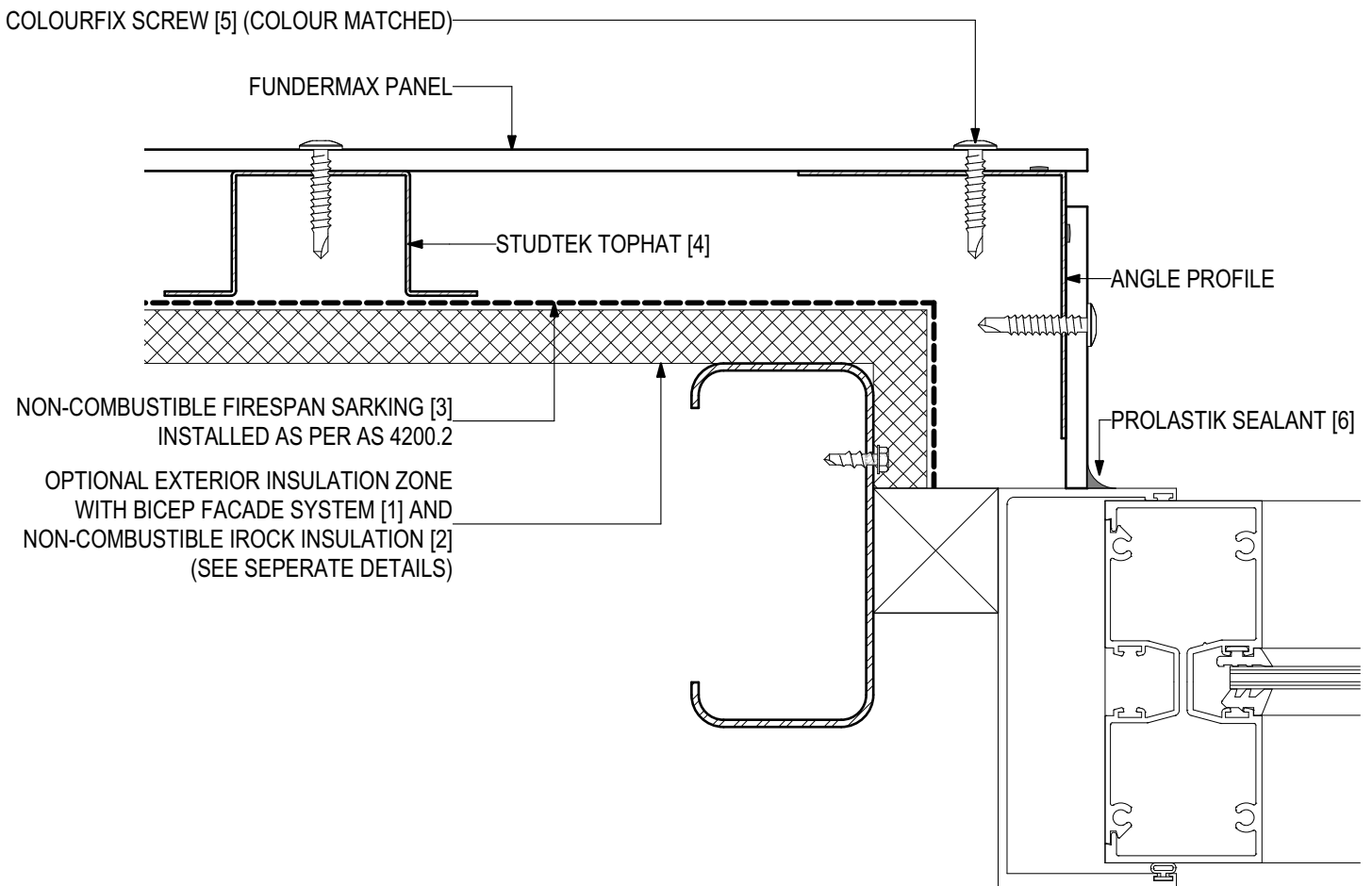
PROLASTIK SEALANT [6]





## D.13 - INSET WINDOW JAMB (SCALE 1:2)

### FUNDERMAX High Pressure Laminate Panel (V0323)



## SYSTEM COMPONENTS

BICEP FACADE  
SYSTEM [1]



IROCK  
INSULATION [2]



FIRESPAN  
SARKING [3]



STUDEK  
TOPHAT [4]



COLOURFIX  
SCREWS [5]



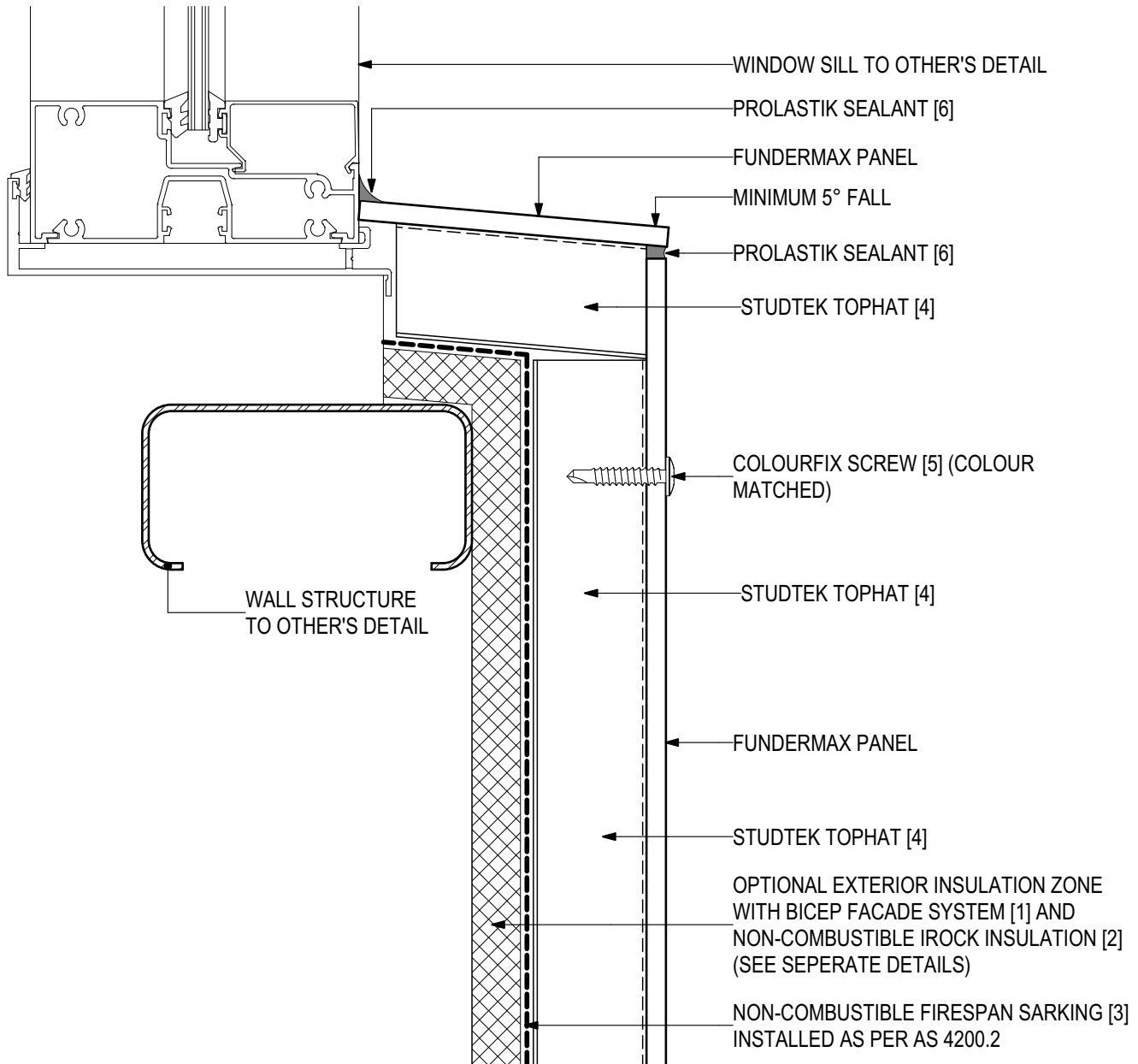
PROLASTIK  
SEALANT [6]





## D.14 - INSET WINDOW SILL (SCALE 1:2)

### FUNDERMAX High Pressure Laminate Panel (V0323)



## SYSTEM COMPONENTS

BICEP FACADE SYSTEM [1]



IROCK INSULATION [2]



FIRESPAN SARKING [3]



STUDEK TOPHAT [4]



COLOURFIX SCREWS [5]



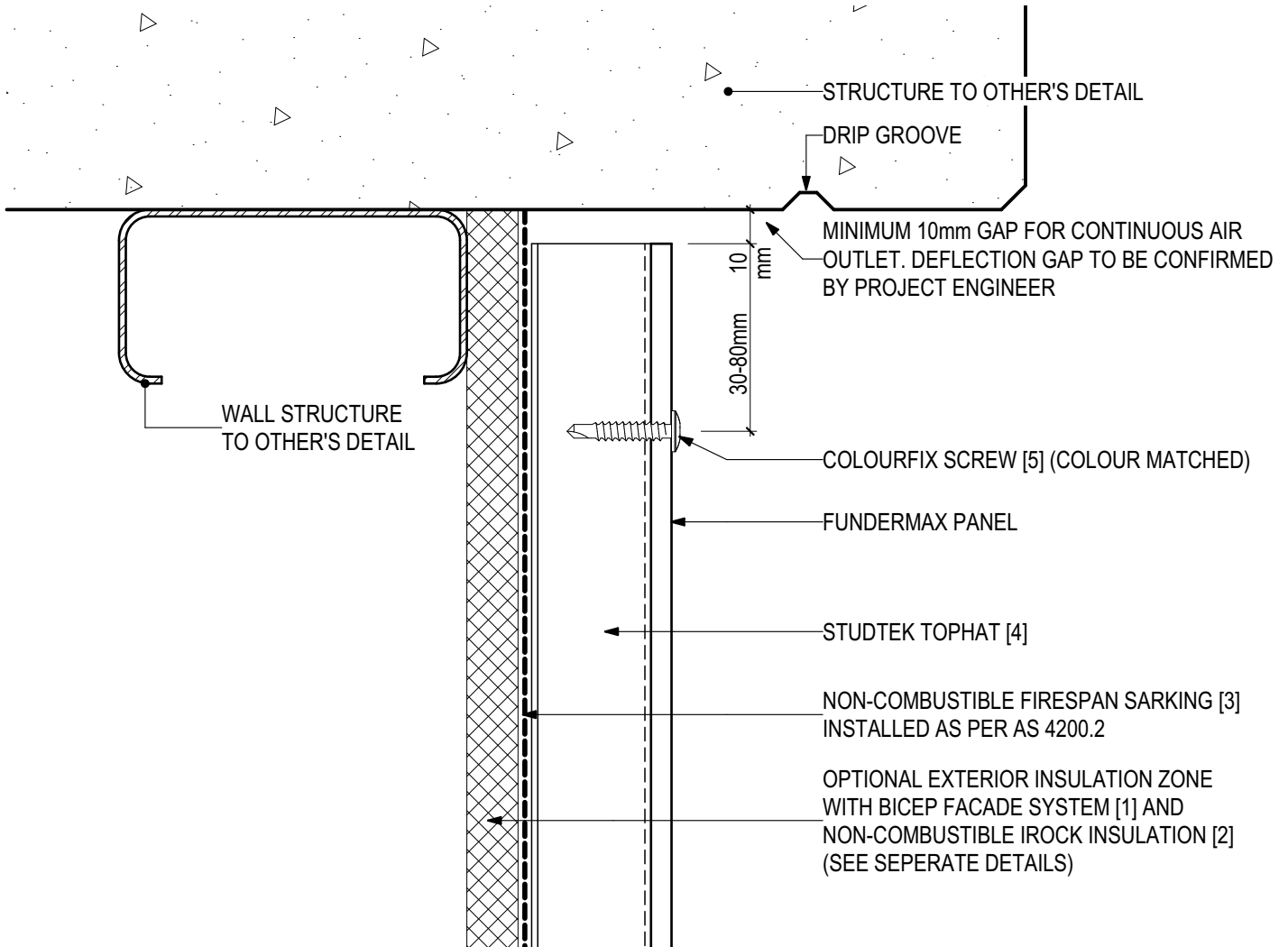
PROLASTIK SEALANT [6]





## D.15 - HEAD AT SLAB JUNCTION (SCALE 1:2)

### FUNDERMAX High Pressure Laminate Panel (V0323)



## SYSTEM COMPONENTS

BICEP FACADE SYSTEM [1]



IROCK INSULATION [2]



FIRESPAN SARKING [3]



STUDTEK TOPHAT [4]



COLOURFIX SCREWS [5]



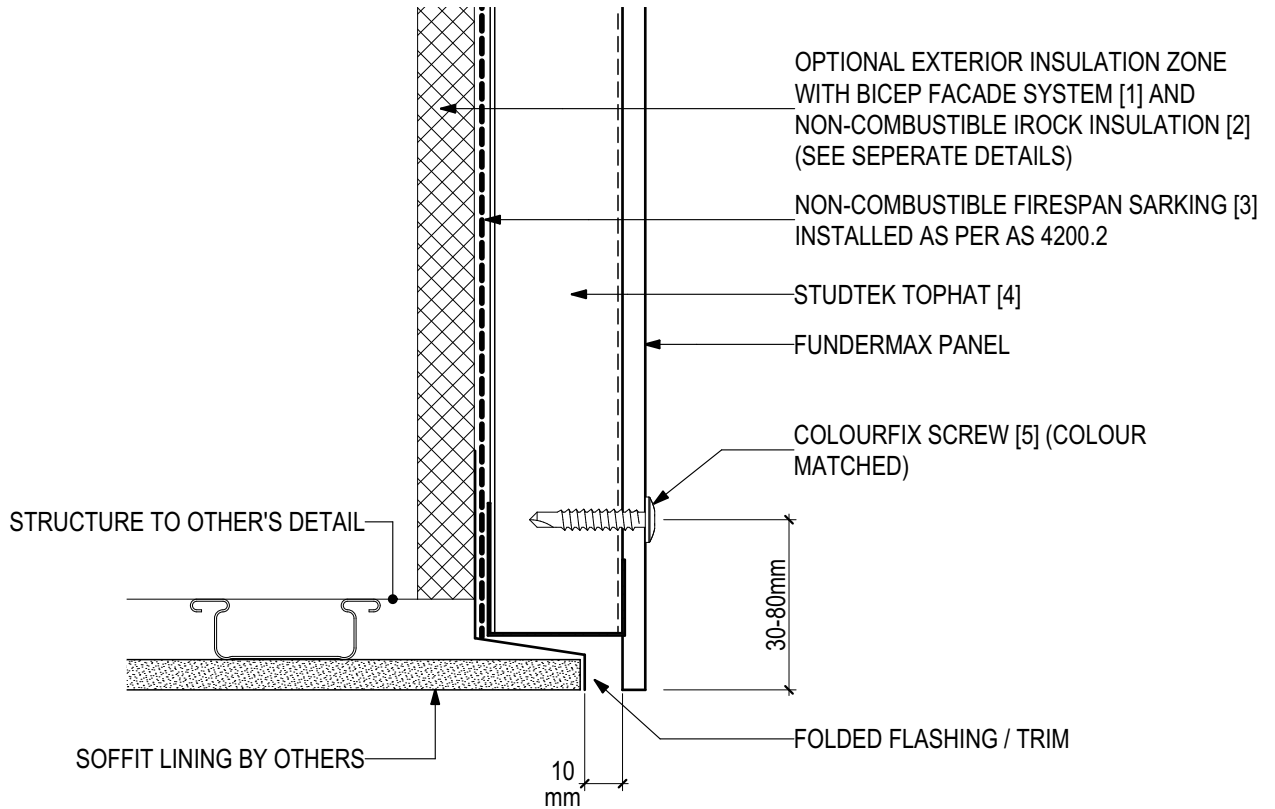
PROLASTIK SEALANT [6]







**D.16 - SOFFIT JUNCTION (SCALE 1:2)**  
FUNDERMAX High Pressure Laminate Panel (V0323)



**SYSTEM COMPONENTS**

BICEP FACADE SYSTEM [1]



IROCK INSULATION [2]



FIRESPAN SARKING [3]



STUDEK TOPHAT [4]



COLOURFIX SCREWS [5]

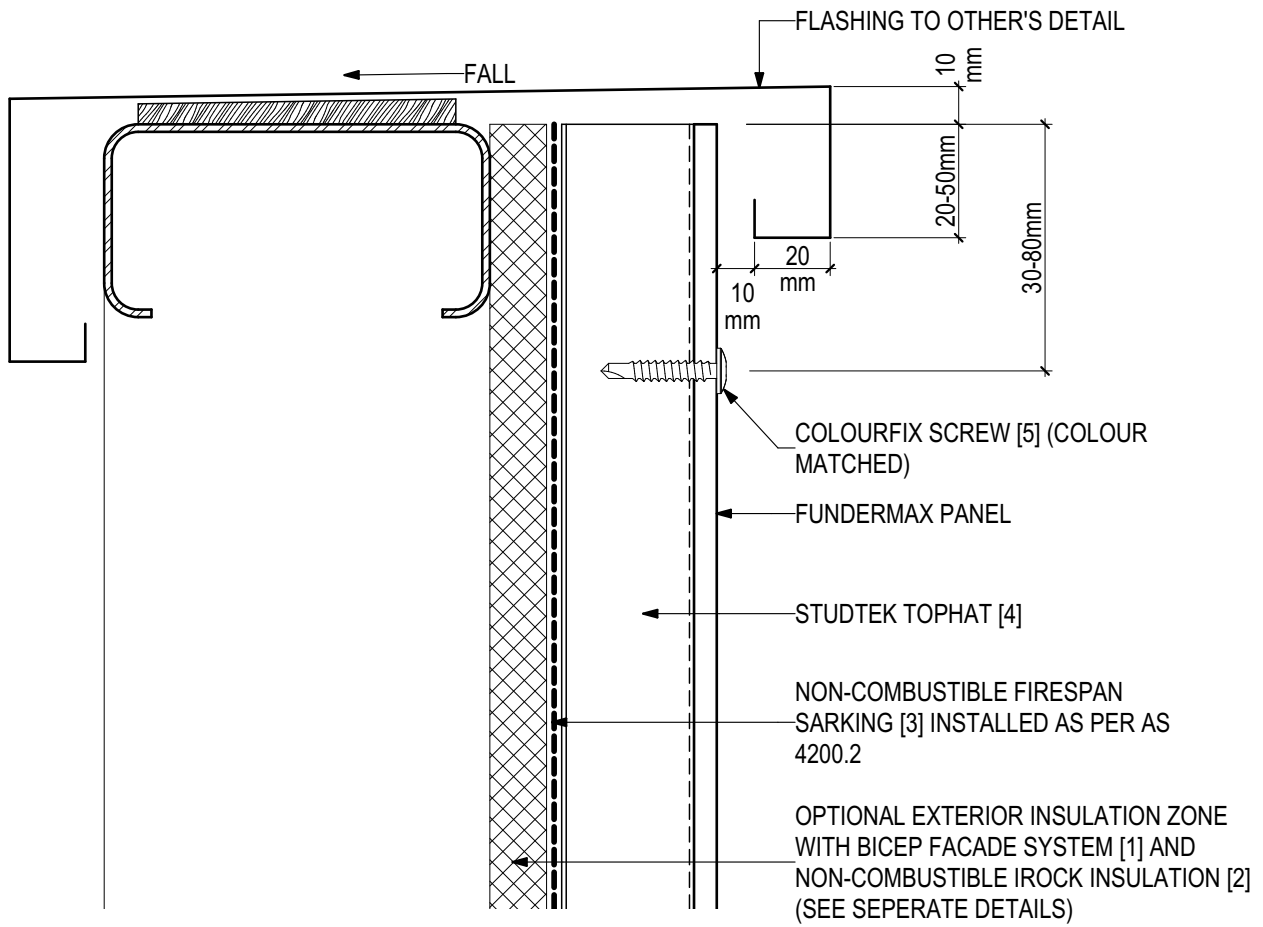


PROLASTIK SEALANT [6]





**D.17 - PARAPET DETAIL (SCALE 1:2)**  
FUNDERMAX High Pressure Laminate Panel (V0323)



**SYSTEM COMPONENTS**

BICEP FACADE SYSTEM [1]



IROCK INSULATION [2]



FIRESAN SARKING [3]



STUDEK TOPHAT [4]



COLOURFIX SCREWS [5]



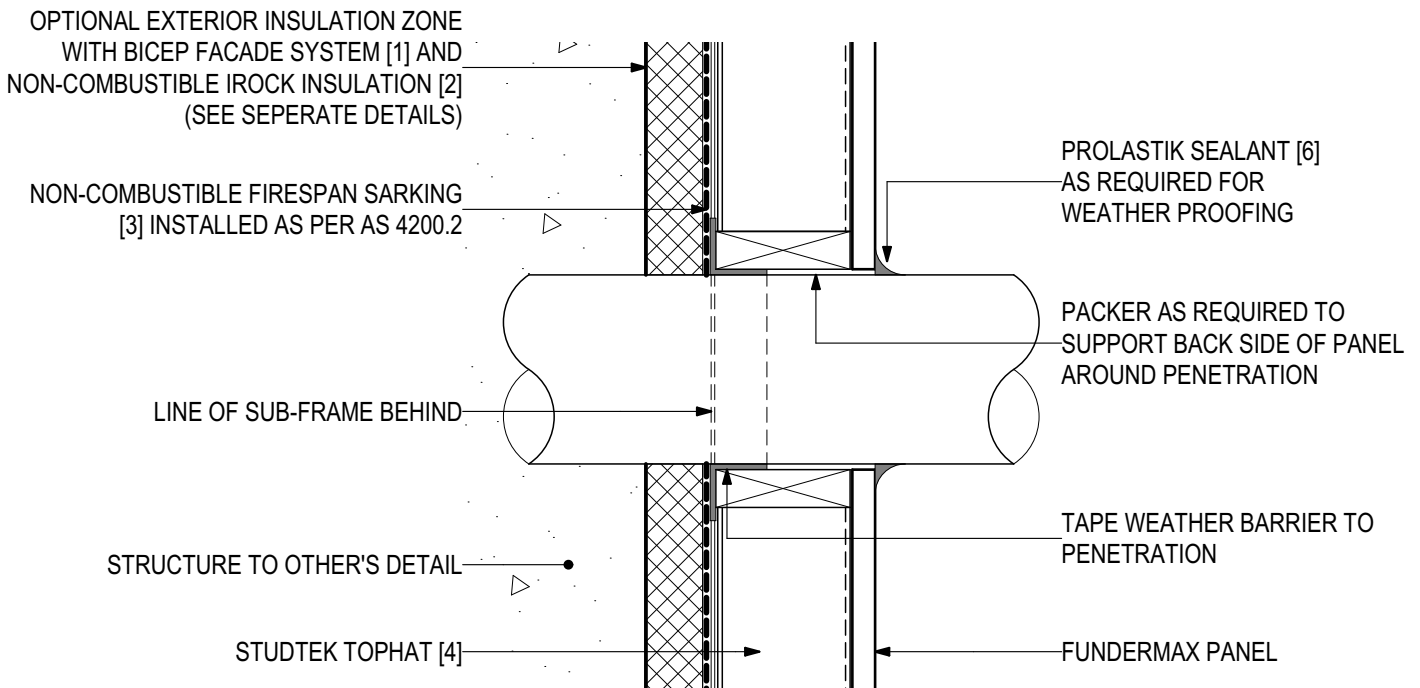
PROLASTIK SEALANT [6]





## D.18 - TYPICAL PENETRATION DETAIL (SCALE 1:2)

### FUNDERMAX High Pressure Laminate Panel (V0323)



## SYSTEM COMPONENTS

BICEP FACADE SYSTEM [1]



IROCK INSULATION [2]



FIRESAN SARKING [3]



STUDEK TOPHAT [4]



COLOURFIX SCREWS [5]



PROLASTIK SEALANT [6]

