

FUNDERMAX®

m.look




m.look Technique

Release June 2018

m.look

**for
people
who
create**



This brochure is intended to provide you with technical information about the m.look panel for outdoor applications.

Examples of possible applications can be found in the m.look brochure and at www.mlook.at. If you have any questions that are not answered in this brochure, please contact our application engineering (support@fundermax.biz).

We are happy to help.

m.look - for people who create.

Exclusion of Liability

The information made available in this document are exclusively for purposes of general information.

Not all of the systems mentioned and shown in this document are appropriate or suitable for all areas of application. All customers and third parties are obligated to inform themselves thoroughly about FunderMax products, including their suitability for certain purposes. We explicitly recommend that you and other users of this document seek out independent expert advice on adherence to local planning and use requirements, applicable laws, regulations, standards, guidelines and testing standards. FunderMax accepts no liability in connection with the use of this document.

The general sales conditions of FunderMax GmbH in the current version (available at www.mlook.at) shall apply for all of our oral as well as written statements, offers, sales quotes, sales, deliveries and/or contracts and all related activities

COPYRIGHT

ALL TEXTS, PHOTOGRAPHS, GRAPHICS, AND AUDIO AND VIDEO FILES ARE PROTECTED BY COPYRIGHT LAW AS WELL AS BY FURTHER INTELLECTUAL PROPERTY LAWS AND MAY NOT BE DUPLICATED, ALTERED OR USED ON OTHER WEBSITES FOR PURPOSES OF BUSINESS, ETC.

Table of Contents

Approvals	4
m.look and the Environment	5
General	
- Material Properties	6
Specifications	7
m.look - Function and Advantages	8
Facades	10
- Installation: Riveted to an Aluminum Substructure	10
- Fastenings	11
- Wind Loads	14
- Construction Details	16
Machining Recommendations	18
- Transport and Handling	18
- Storage and Protection	19
- Machining	
- Installation	22
Cleaning	26
Accessories/Suppliers	27

m.look Approvals



Fig. 1

Europe

m.look Exterior panels are Euro Class A2-s1, d0 in accordance with EN 13501-1

Austria

Tested in accordance with ÖNORM B3800-5 for vertical facades, slanted facades and soffits.

Requirements regarding fire protection are set out in the national building regulations and the OIB guidelines in the current version. For certain applications, proof of B 3800-5 (facade fire test) is required in addition to proof of Euro Class A2-s1, d0 in accordance with EN 13501-1.

For special constructions, we are happy to support you in clarifying and fulfilling the local building regulations.

Germany

National technical approval by the German Institute for Building Technology. Approval number: Z-33.1-1363

The requirements are set out in the national building regulations and the guidelines for special constructions such as school buildings, high-rise buildings, public buildings, metros, hospitals and airports.

Switzerland

Classification: A2-s1, d0

Current documentation on all standards and approvals relating to m.look panels can be found in the internet at: <http://www.mlook.at/technische-details/>.

Please be certain to observe the applicable building regulations. FunderMax will assume no liability for a failure to do so.

FunderMax GmbH

A-2355 Wiener Neudorf

Z-33.1-1363



Fig. 2

m.look and the Environment

Environmentally Friendly Production

The glass veil is impregnated with resins in impregnation lines, dried and pressed under high pressure and heat into durable moisture resistant panels. The exhaust air extracted during the drying is treated by regenerative thermal oxidation and the resulting heat is again reintroduced into the process. FunderMax received the „climate:active“ award as best practice from the Austrian Energy Agency and the Federal Ministry for the Environment for the installation of this efficient air treatment system. The production plant can thus reduce its emissions by approximately 10,000 tons of CO₂ per year.

Natural Resources

FunderMax m.look panels consist mostly of natural mineral resources that are available in unlimited quantities. Glass fibers give the panel the necessary strength and the proven resins make it moisture resistant and durable.

Durable and Maintenance-free

Extensive tests certify the exceptional durability of FunderMax m.look panels. The production process ensures a highly resistant surface. FunderMax m.look panels do not require any maintenance to ensure a long service life. The surface of the panels is highly resistant to soiling. If necessary, they can be cleaned with standard cleaning agents. It is not necessary to seal the edges, even after cutting. The edges will take on their natural color after a short period of time.

Environment

Environmental objectives are fulfilled both for new buildings, as well as for the renovation of existing buildings, through the use of rear-ventilated facades: The measurable reduction in energy required for heating minimizes the carbon dioxide emissions, one of the greatest causes of environmental pollution. State and regional subsidy programs are still available for energy-saving facade renovations.

Disposal and Recycling

The cuttings or dust from machining can be disposed of just like any other building material.

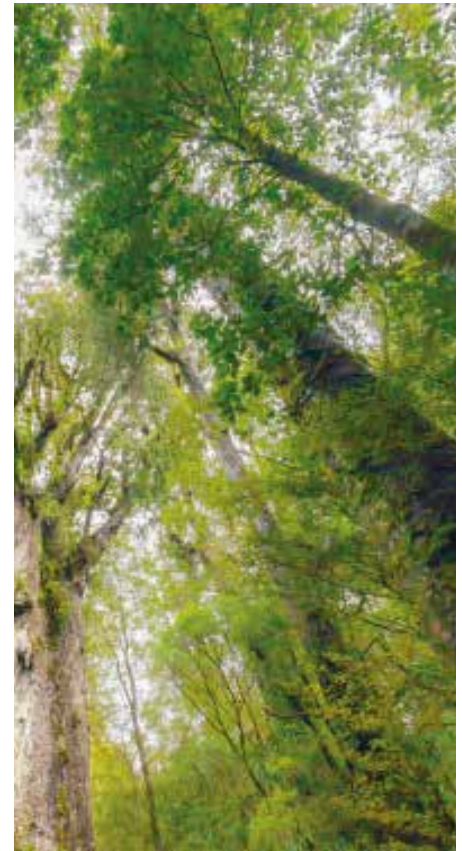


Fig. 3

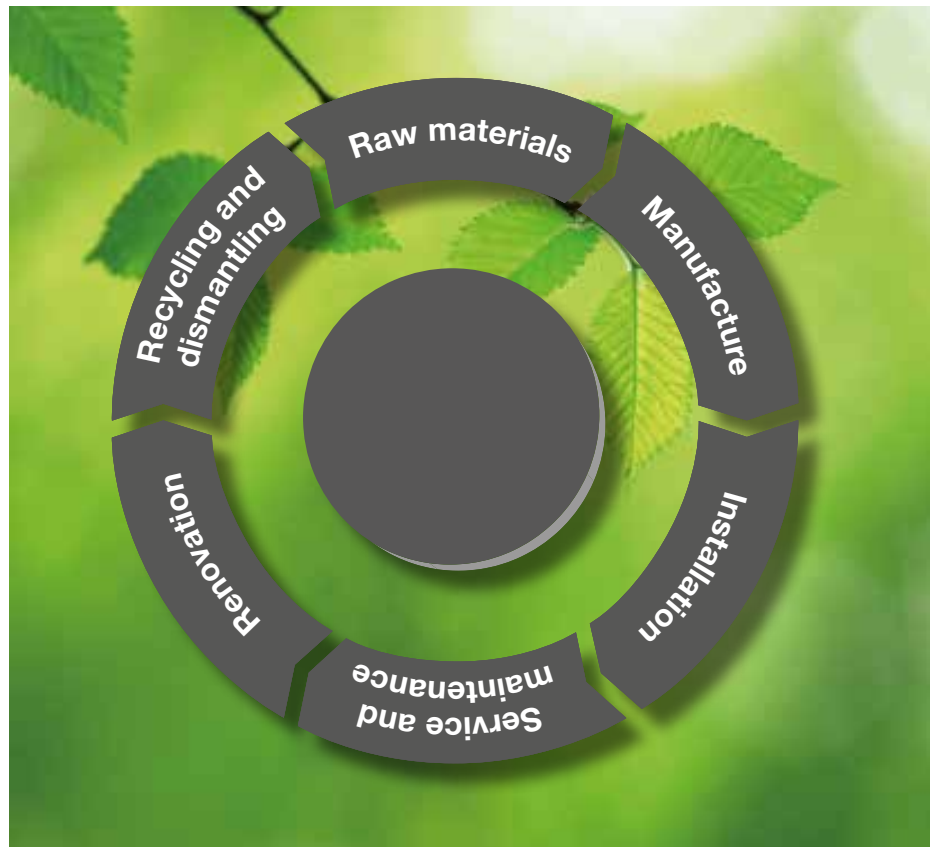


Fig. 4

m.look General

m.look is an architectural facade panel with heavy duty, reinforced glass fiber, predominantly mineral, non-combustible core with a highly weather resistant decorative surface. The decorative surface is characterized above all by high scratch resistance, light fastness, impact resistance, anti-graffiti properties, ease of cleaning and hail resistance. Properties tested in accordance with EN438-2.

Surface NT

Format 3660 x 1630 mm
(aprox 12" x 5,35")
Tolerances - 0 / +10 mm

Panel dimensions are production dimensions. It is recommended to cut all sides of the panel if precise dimensions and angles are required. Depending on the cut, the net mass is reduced by approx. 10 mm.

Classification

A2-s1, d0 in accordance with EN 13501-1

Thickness 7.0 mm

Panels with double-sided decorative design, tolerance ± 0.4 mm

Material Properties

m.look panels shrink when they release moisture! m.look panels expand when they absorb moisture! When working with and using m.look panels in construction, these possible dimensional changes must be taken into consideration. The dimensional change for m.look panels is generally about 30% less in the longitudinal direction than it is in the transverse direction (longitudinal direction relative to the standard panel dimensions).

Element length = a

Element width = b

$\frac{a \text{ or } b \text{ (in mm)}}{500} = \text{Allowance for exp.}$

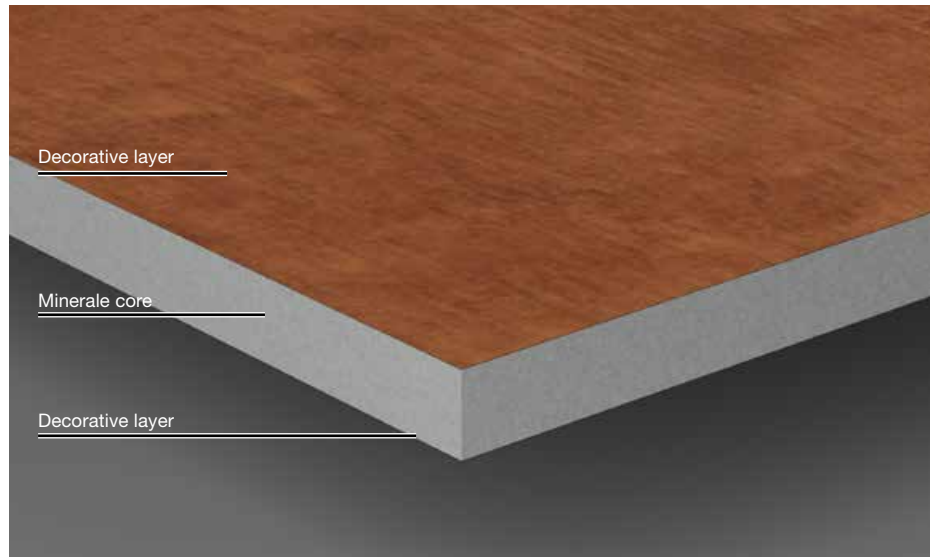


Fig. 5

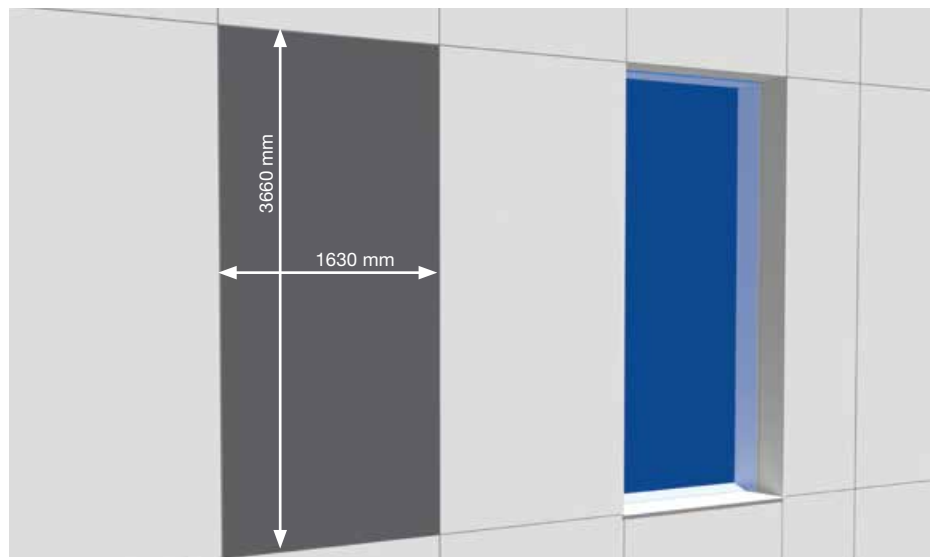


Fig. 6

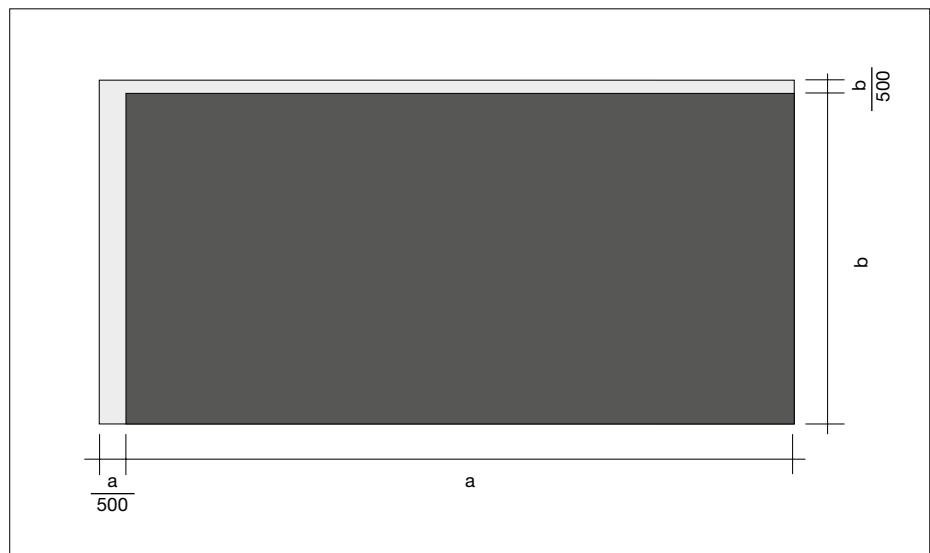


Fig. 7

m.look Specifications

Panel Dimensions	Test Method	Tolerance	Values	Unit
Length		- 0 / +10 mm	3.660 (aprox 12")	mm (ft)
Width		- 0 / +10 mm	1.630 (aprox 5,35")	mm (ft)
Strength		+ 0,4	7,0	mm
Flatness	EN 438-6/5.3	≤ 5	≤ 5	mm/m

Types	Test Method	Tolerance	Values	Unit
Decors			based on the current range of decors	
Special decors			on request	
Cut length/width		+ 0,5		mm
Machining (drilling, milling, CNC)			on request	
Surface texture			NT	
Substructure			Aluminium, steel	
Wall anchors			Fassadenniet Alu/Niro K14	
Fastening spacings			up to 800 mm in accordance with the structural standard for the panel type	
Joint width			8 ± 1	mm

Physical Properties	Test Method	Standard Value	Values	Unit
Building material class	EN 13501-1	-	A2-s1, d0	
Fire resistance	EN ISO 1716	≤ 3	≤ 3	MJ/kg
Surface protection			Weather protection, consisting of patented, double hardened acrylic polyurethane resin	
Light fastness of the decorative layer (standard)	EN 438-2/29	≥ 3	≥ 3	Gray scale
Light fastness of the decorative layer (special)	EN 438-2/29		≥ 4	Gray scale
Scratch resistance (surface hardness)	EN 438-2/25		≥ 3	Degree
Hail class	VKF Nr. 11	-	HW 5	
Flexural strength	EN ISO 178	-	≥ 36	MPa
E-Module	EN ISO 178	-	≥ 7500	MPa
Basis weight		-	13,5	kg/m ²
Density	EN ISO 1183-1	-	1,9	g/cm ³
Thermal resistance	EN 12667	-	0,0327	m ² K/W
Dimensional change EOTA wall	ETAG 034	-	< 0,8	mm/m
Freeze/thaw cycle test	EN 438-2/19	-	passed	
Thickness swelling 24 hours	EN 317	-	< 0,1	%

Physical Properties	Test Method	Standard Value	Values	Unit
Formaldehyde emission	EN 717-1	≤ 0,1	≤ 0,02	ppm
VOC emission (TVOC)	AgBB	≤ 1,0	0	mg/m ³
Disposal			Same as for other building materials (in Austria key number 91401)	

Table 1

m.look Function and advantages

Function and advantages of a non-bearing, rear-ventilated facade.

Protection against Rain

The VHF meets the norms for stress group III in accordance with DIN 4108-3 and is driving-rain proof. The low percentage of moisture absorbed from rain water that does not evaporate through the surface of the facade is quickly removed via the ventilation space between the insulation and the wall cladding (weather protection).

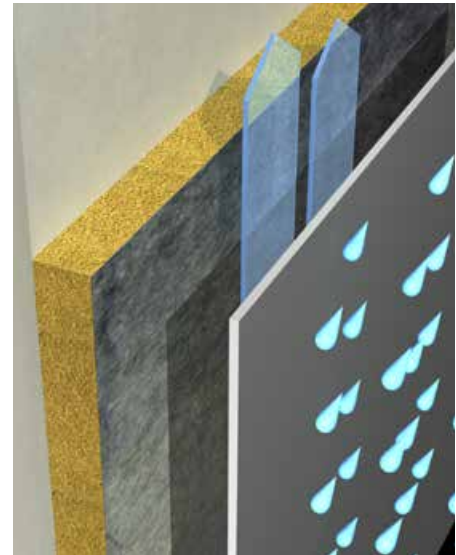


Fig. 8

Insulation

The non-bearing, ventilated facade (VHF) system can be designed for different energy requirements with an individually calculated insulation. Thus, any desired insulation thickness can be used. This means insulation values typical of low-energy, passive-energy or active-energy houses and comply with the current energy savings regulations can easily be achieved.

Based on the energy needs, the insulation maximizes the heat retention of the building. High summer temperatures in the interior of the building are regulated. By reducing the amount of energy needed for heating, the non-bearing facade minimizes the carbon dioxide emissions of the heating system.

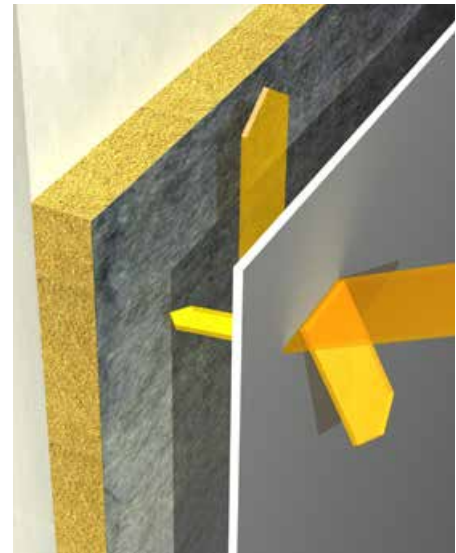


Fig. 9

Protection against Noise

Depending on the thickness of the insulation layer, dimensions of the panels and the proportion of open joints, noise protection can be increased by up to 14 dB.

Protection against Condensation Water

The construction of the non-bearing, rear-ventilated facade (VHF) decreases the vapor diffusion resistance from the interior to the exterior of the building: Moisture from the construction or use of the building is removed through the rear-ventilation space. Thus the lasting function of the insulation can be ensured and makes a significant contribution to a pleasant and healthy indoor climate.

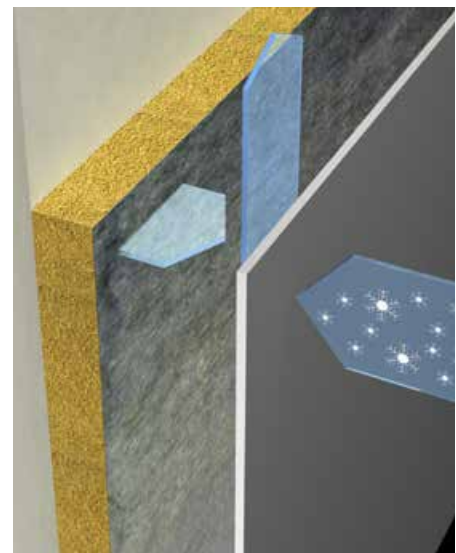


Fig. 10



Fig. 11

Economy

The economic aspects can also be found again in the requirements of sustainable construction:

Longevity and long maintenance intervals are the essential key points.

Cost Certainty

The non-bearing rear-ventilated facades enable exact cost planning, even for renovations.

General Construction Information

During construction and installation, make sure that the material is not exposed to standing water, i.e. the panels must always be able to dry. m.look panels may exhibit planar deviations. These should be corrected through a stable, level substructure. All connections to other components or the subsurface are to be force-fitted. Elastic intermediate layers between the panel and the substructure, as well as between parts of the substructure, that allow a tolerance of greater than ± 0.5 mm are absolutely to be avoided.

Advantages of the Non-bearing, Rear-Ventilated Facade

- Architectural accents can be achieved through various design and joint patterns
- Long-term value retention and appreciation of the building
- Exact cost estimation of the facade
- Long maintenance intervals and low follow-up costs
- Installation under any weather conditions
- Can be installed on virtually any surface
- Savings through the shorter scaffolding times

m.look Façade

Installation of m.look panels with rivets on an aluminum substructure.

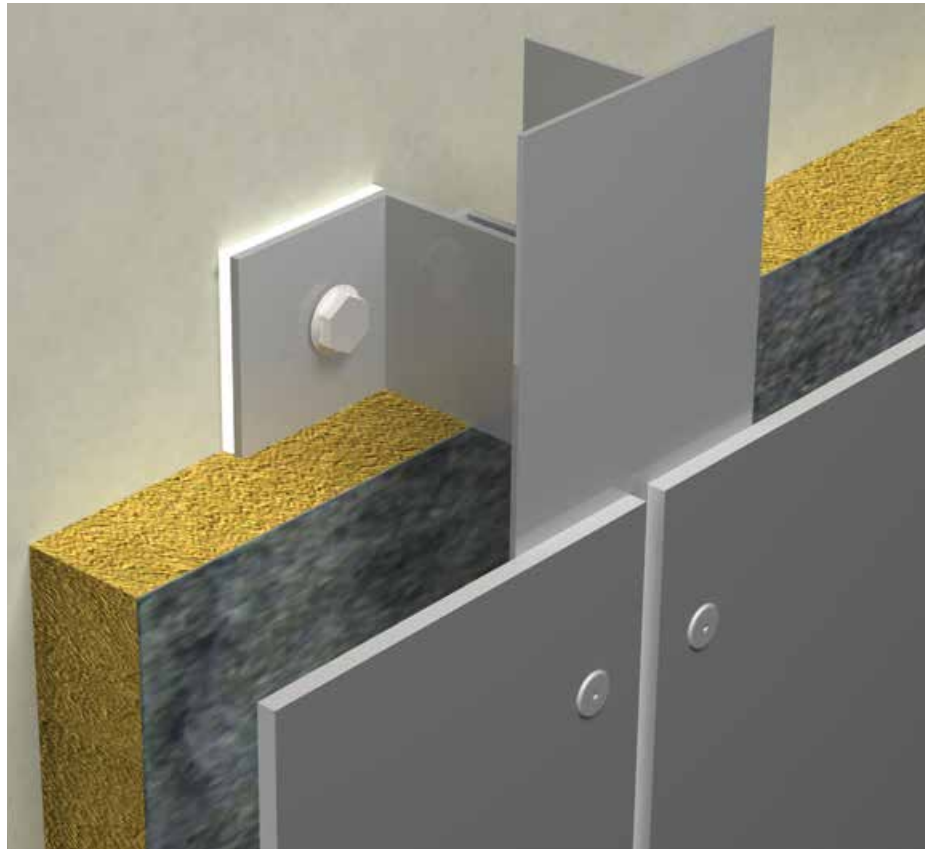


Fig. 12

Substructure

The aluminum substructure must meet the requirements of the national standards and is to be installed according to the manufacturer specifications for the substructure.

The aluminum substructure basically consists of vertical support brackets that are mounted on the wall using angle brackets. Due to the material properties of m.look panels, fixed points and sliding points need to be made to mount the panels (Fig. 13). The dimensions of metal substructures vary with changes in temperature. However, the dimensions of m.look panels vary with changes in relative humidity. These dimensional changes in the substructure and wall panel materials may be in opposite directions. It is therefore essential to ensure there is sufficient expansion space when installing m.look panels.

Sliding point

The drill hole diameter for m.look panels should be 8.5 mm. The head of the fastening means must always cover the hole. The fasteners are to be set such that the panel can move. Rivets must be set centrally using a rivet placement guide. The defined distance of the rivet head to the panel surface (0.3 mm) allows the parts to move in the drill hole (Figure 14). The center of the hole in the substructure must line up with the center of the hole in the m.look panel. The appropriate drill guides should be used. The panels should be fastened from the middle outwards.

Alternatively, the sliding points that are located at the level of the fixed points can be made as loose points with a slot (height = 5.1 mm; width = 8.5 mm).

Fixed point

Fixed points serve the uniform distribution (halving) of the swelling and shrinkage movements. The drill hole diameter for m.look panels should be 5.1 mm.

Fastenings

Alu-Blind rivet with big color lacquered head.

Rivet sleeve:

Material-No. EN AW-5019

Rivet pin:

Material-No. 1.4541

Pull-off strength of rivet pin: 5.6 KN

Diameter of drill hole in m.look panels:

Sliding points: 8.5 mm

Fixed points: 5.1 mm

Diameter of drill hole in the aluminium substructure: 5.1 mm

Rivet 5,0 x 16 K14

for support bracket thickness
 $2.0 \leq t \leq 3.0$ mm

Rivet 5,0 x 18 K14

for support bracket thickness
 $3.0 < t \leq 5.0$ mm

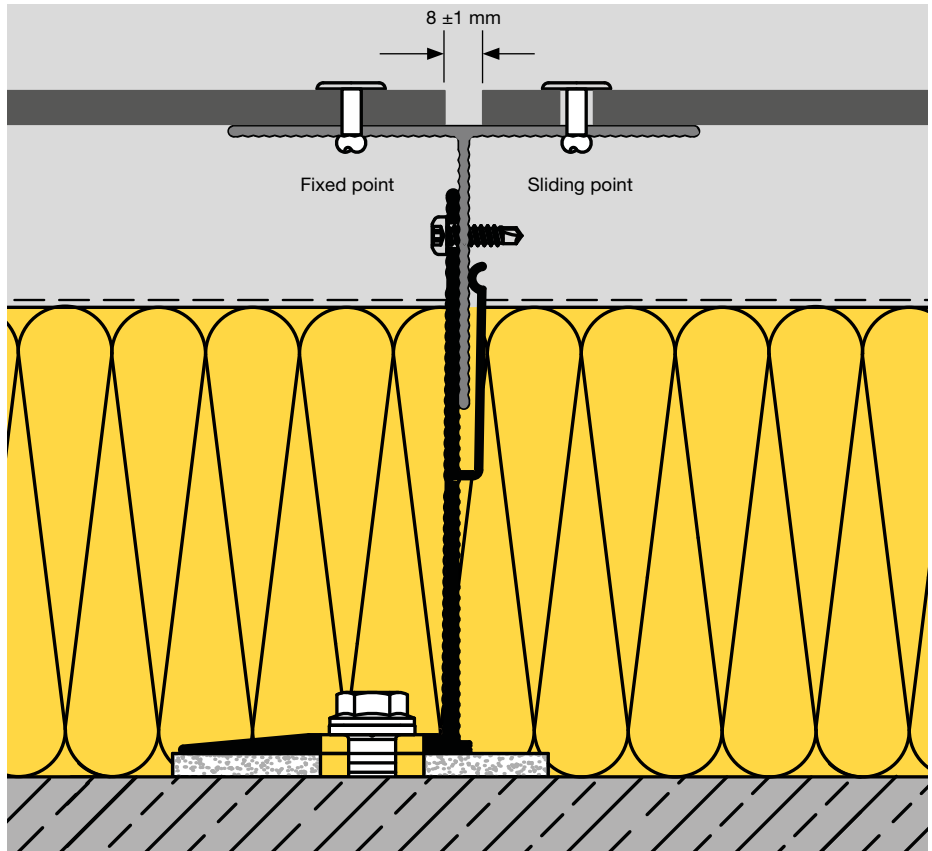


Fig. 13

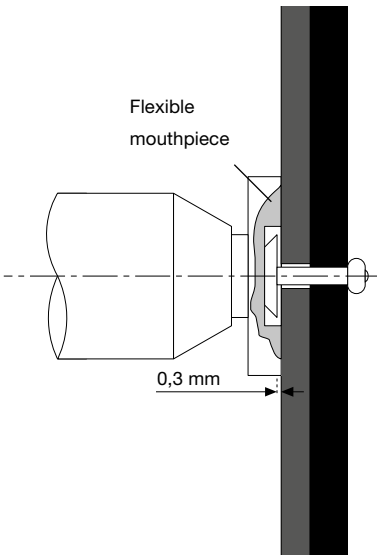
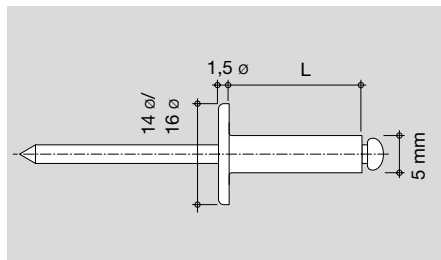


Fig. 14

The rivets must be centered and set with a rivet guide with an offset of no more than 0.3 mm.



Rivet: Type 5x16K14

Fig. 15



Fig. 16

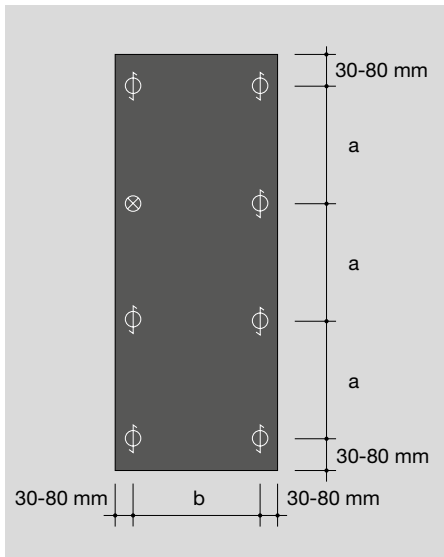
Instead of a fixed point hole, a fixed point sleeve can also be used.

MBE Art- No. 1240201 Ø 8,5 mm

MBE Art- No. 1240205 Ø 10 mm

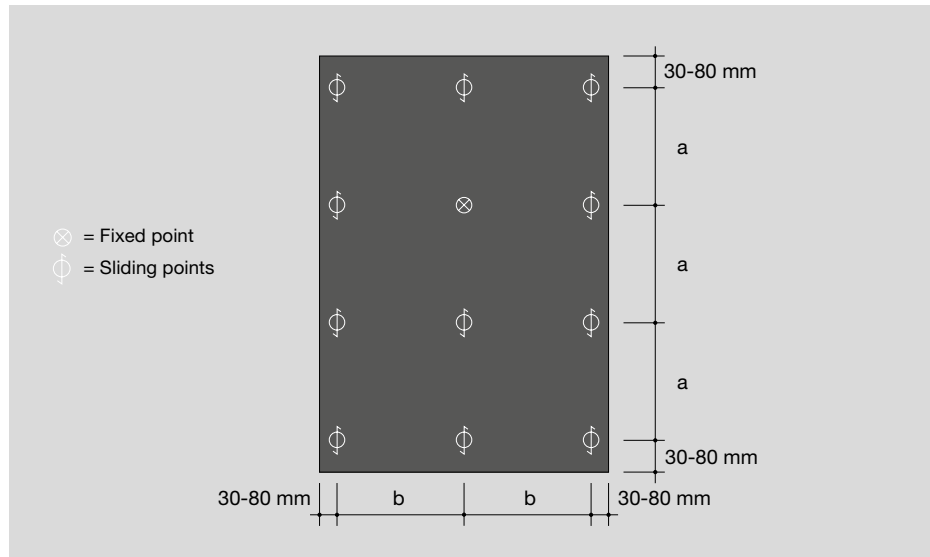
SFS Art- No. 1240201 Ø 8,5 mm

m.look Façade



Single span

Fig. 17



Double span

Fig. 18

Edge spacings

It is absolutely necessary to observe the edge distance of 30 mm in order to ensure stability and flatness. In order to accommodate dimensional changes, the joints between the panels must be 8 ± 1 mm (Fig. 13).

Fastening spacings

The fixing distance is to be selected in accordance with the structural requirements (calculations) or, if this is not necessary due to local building codes, from Tables 2 to 7. The fixing distances are to be smaller in the peripheral area of the building than in the central area (pressure, suction/ Fig. 19).

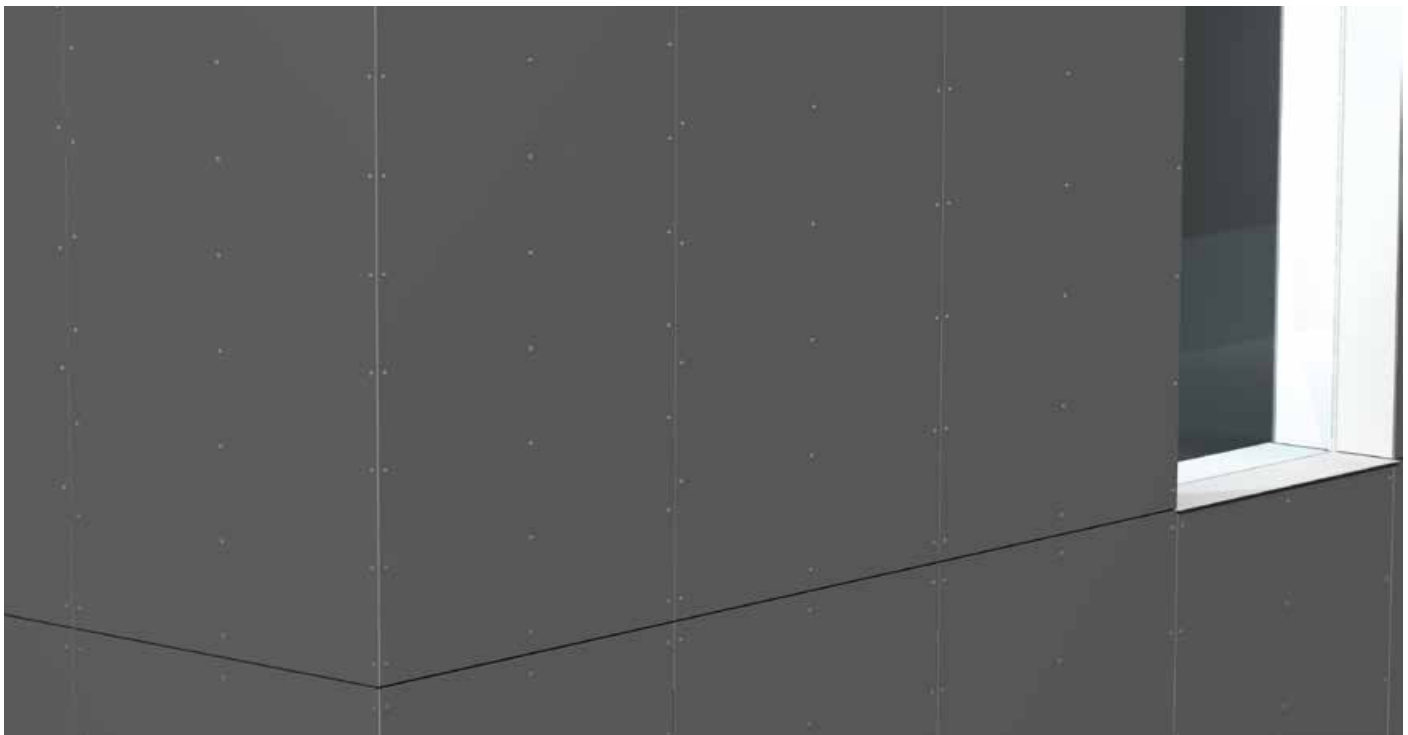


Fig. 19

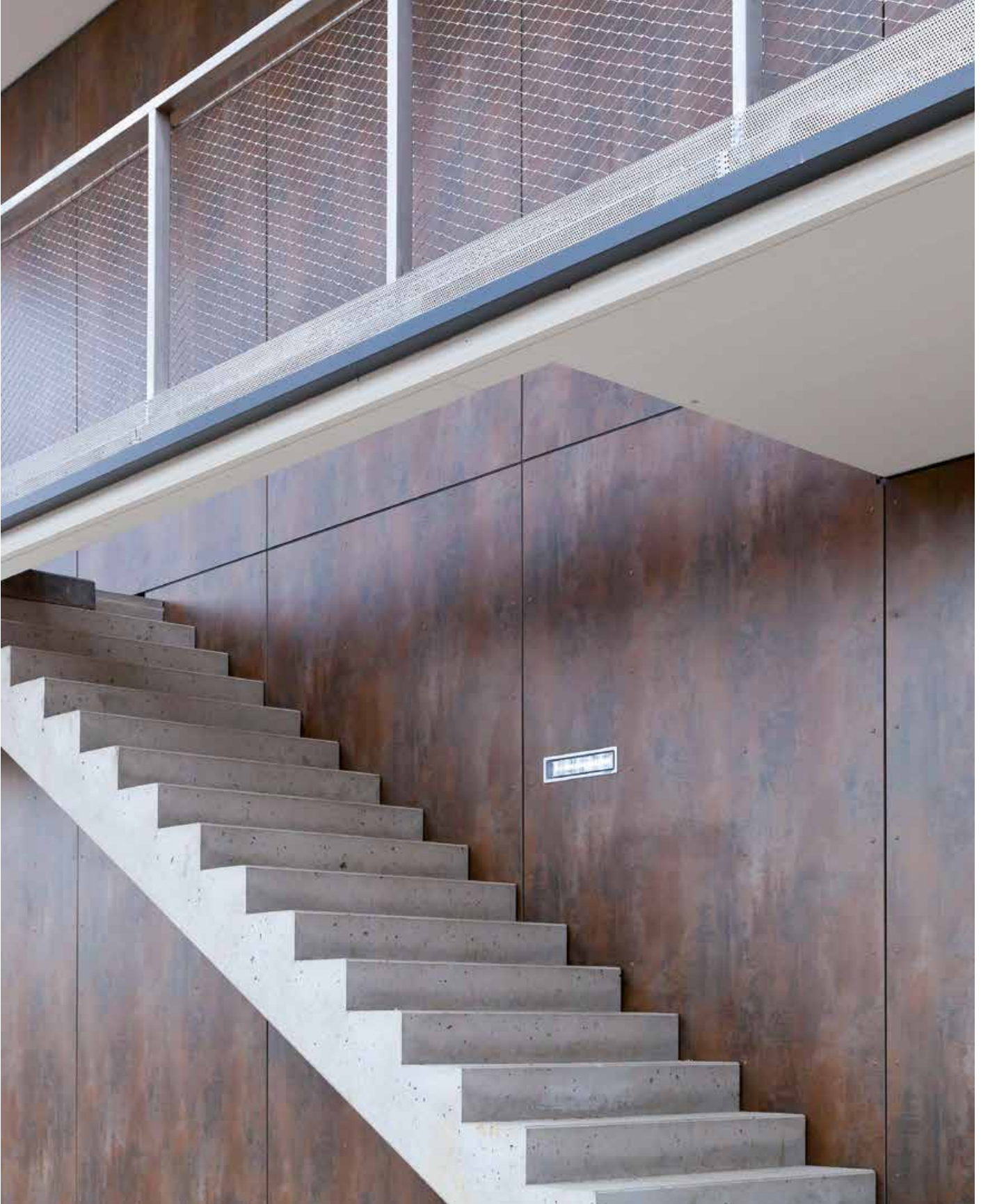


Fig. 20

Wind Loads

A CH Load chart (wind loads) single span		
Load q [kN/m ²]	max b [mm]	max a [mm]
0,30	926	926
0,50	775	775
1,00	548	548
1,50	447	447
2,00	387	387
2,50	346	346
3,00	316	316
3,50	293	293
4,00	274	274
4,50	258	258
5,00	245	245

Table 2

A CH Load chart (wind loads) double span		
Load q [kN/m ²]	max b [mm]	max a [mm]
0,30	1000	746
0,50	775	578
1,00	548	409
1,50	447	334
2,00	387	289
2,50	346	258
3,00	316	236
3,50	293	218
4,00	274	204
4,50	258	193
5,00	245	183

Table 3

A CH Load chart (wind loads) 3-n-panel		
Load q [kN/m ²]	max b [mm]	max a [mm]
0,30	1090	749
0,50	845	579
1,00	598	409
1,50	488	334
2,00	423	290
2,50	378	259
3,00	345	236
3,50	319	219
4,00	299	205
4,50	282	193
5,00	267	183

Table 4

Fastening spacings for Austria and Switzerland

If the specified axis dimension „b“ is not fully utilized, then the allowable mounting distance „a“ can be calculated as follows (source: Typenstatik m.look Fassadenplatten und m.look Stulpdeckung Dipl.-Ing. Gerald Segeth, Dobel 19. 08. 13):

When installing a double panel with a wind load of 0.5 kN, the following applies: max b = 775 mm and max. a = 578.

If a value of 700 mm is used for „b“ for example, then the maximum allowable „a“ is calculated as follows:

$$\text{allow a} = \frac{\text{max b}}{\text{for given b}} * \text{max a}$$

Example:

$$\text{allow a} = \frac{775 \text{ mm}}{700 \text{ mm}} * 578 \text{ mm} = 639 \text{ mm}$$

Fastening spacings for Germany

D Load chart (wind loads) single span		
Load q [kN/m ²]	max b [mm]	max a [mm]
0,30	800	800
0,50	800	800
1,00	664	664
1,50	542	542
2,00	470	470
2,50	420	419
3,00	384	378
3,50	355	347
4,00	332	321
4,50	313	300
5,00	297	282

Table 5

D Load chart (wind loads) double span		
Load q [kN/m ²]	max b [mm]	max a [mm]
0,30	800	800
0,50	800	573
1,00	664	345
1,50	542	282
2,00	470	244
2,50	420	218
3,00	384	199
3,50	355	185
4,00	332	173
4,50	313	163
5,00	297	154

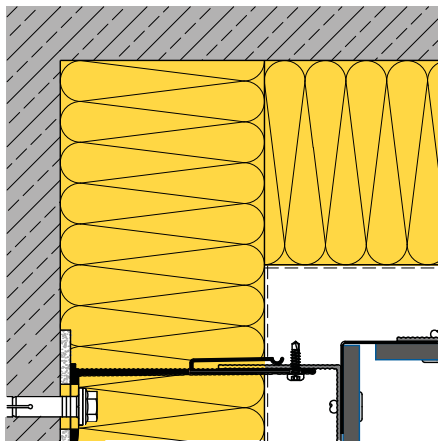
Table 6

D Load chart (wind loads) 3-n-panel		
Load q [kN/m ²]	max b [mm]	max a [mm]
0,30	800	800
0,50	800	627
1,00	725	346
1,50	592	283
2,00	513	245
2,50	458	219
3,00	419	200
3,50	387	185
4,00	362	173
4,50	342	163
5,00	324	155

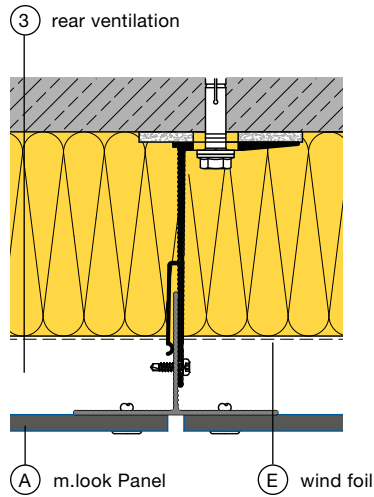
Table 7

m.look Façade

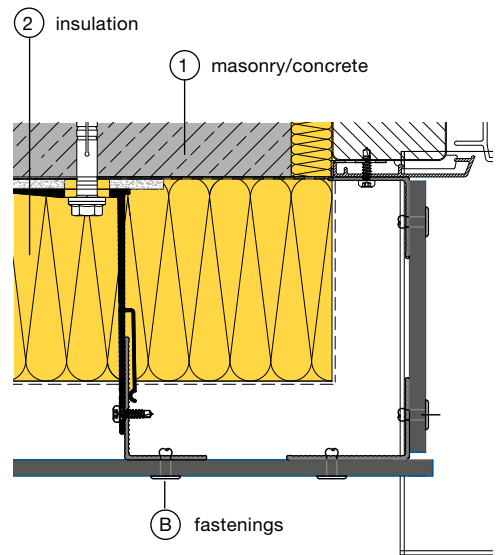
Constructions-details horizontal sections Alu-substructure riveted



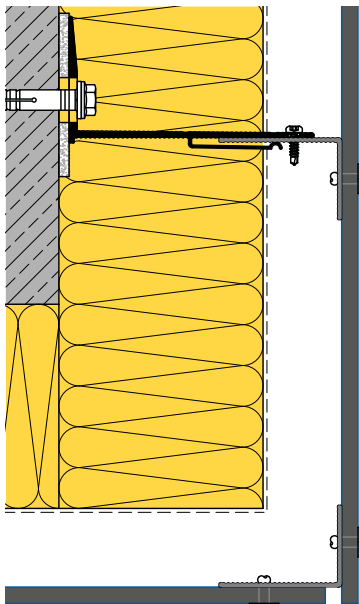
Inner corner A106



Vertical joint A107



Window reveal A104



external corner A105

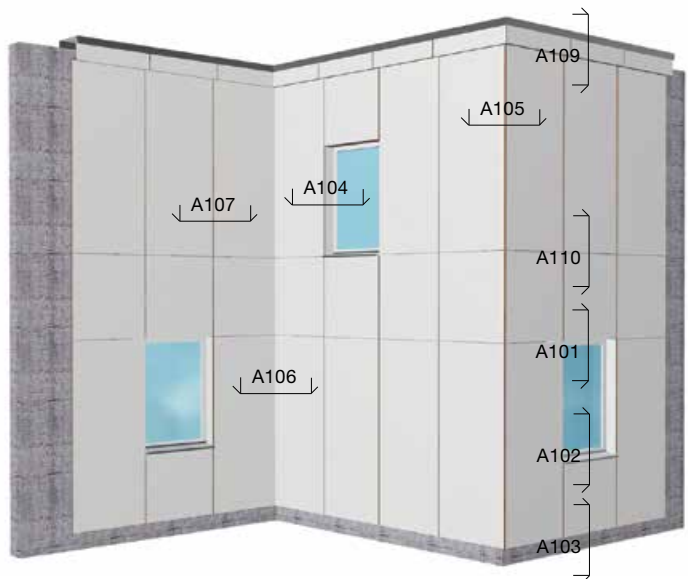
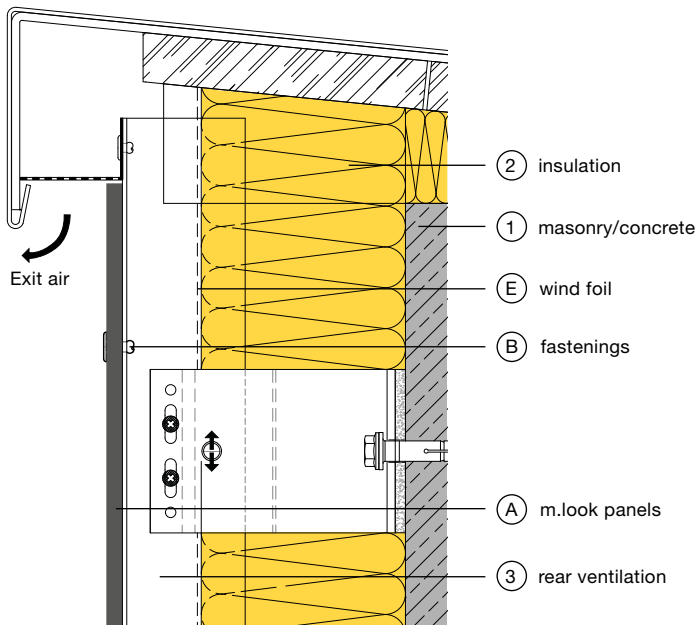


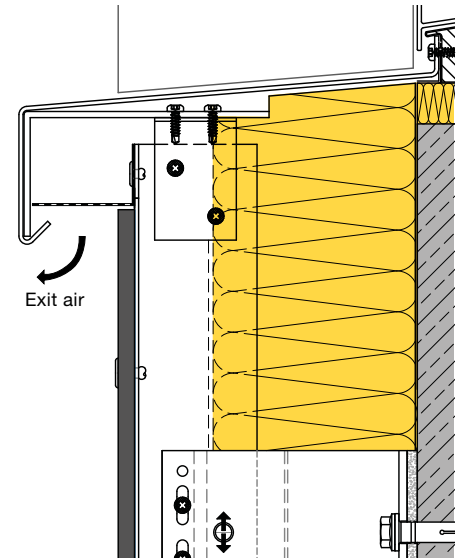
Fig. 21

Note:
All mounting brackets and fastening means shown in this brochure are planning suggestions and are not included with FunderMax panels! All drawings in this brochure are not to scale!
Suppliers: See page 27 at the end of this brochure.

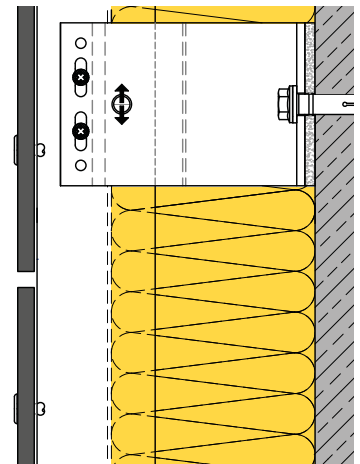
Constructions-details
vertical sections
Alu-substructure riveted



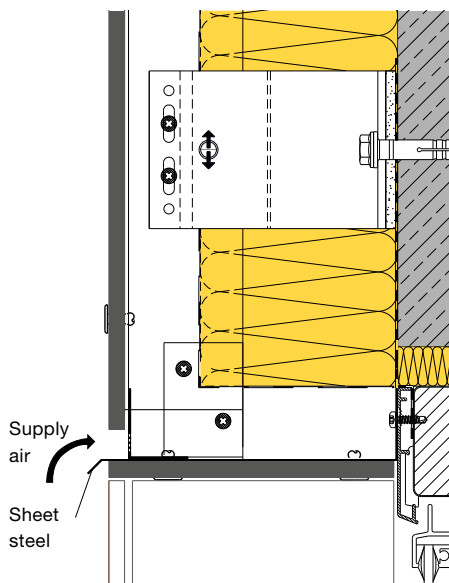
Attica A109



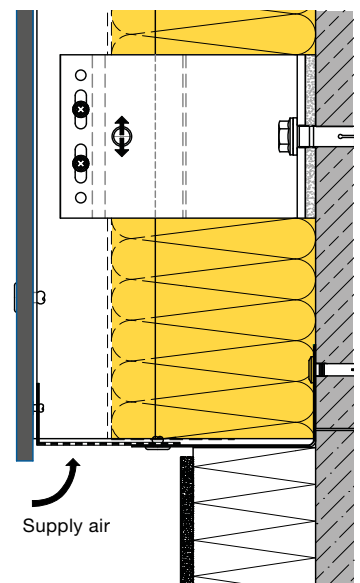
Window sill edge A102



Horizontal joint A110



Window lintel A101



Base connection A103

m.look Balconies and Railings

m.look panels can be mounted as panels for balconies or railings.

Basics

During construction and installation, care is to be taken that the material is not exposed to standing water. This means that the panels must always be able to dry out.

Connections of m.look panels to one another always have to be made in the same panel direction. m.look can show deviations from being flat (see EN 438-6, 5.3), and this is to be compensated for by the sub-construction being executed so that it is stable and flat. All connections to other components or to the background must be executed firmly. Elastic intermediate spacers to the sub-construction elements and also between sub-construction elements which permit a greater tolerance than ± 0.5 mm must definitely be avoided. m.look panels can be mounted with rivets or screws. Due to the material properties of m.look panels, fixed point and sliding points need to be made to mount the panels (see page 11, Fig. 13).

Technical Notes

The substructure is to be protected against corrosion regardless of the material or system used. Anchoring elements for installation on walls or for installation of the panels must be suitably dimensioned to withstand the local wind loads and meet the local structural requirements. Verifications are to be submitted to the client. The necessary space for expansion according to the manufacturer's recommendations must be taken into account when installing m.look panels.

Panel Joints

The joints must be made at least 8 mm wide so that changes in size can take place without hindrance.

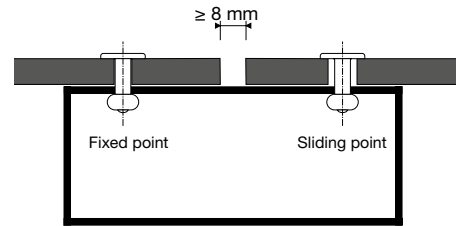


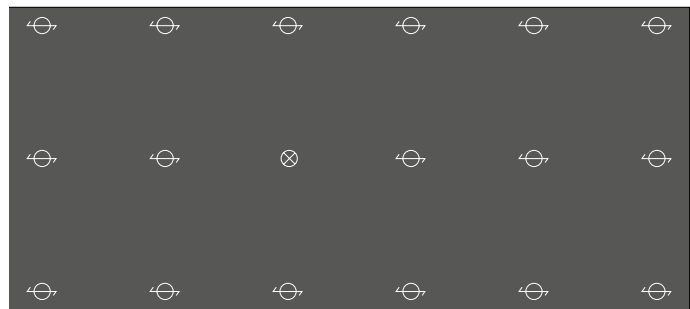
Fig. 22

⊕ = SLIDING POINTS
⊗ = FIXED POINTS



Single span

Fig. 23



Double span

Fig. 24

Sliding Point

The diameter of the drill hole in m.look must be drilled with 8,5 mm. The head of the fastening must be big enough so that the drill hole in the m.look panel is always covered. The fastening is placed in such a way that the panel can move. Rivets are put in place with flexible mouth-pieces. The defined clearance of the rivet head, allows movement of the elements in the drill hole. Clearance + 0.3 mm (page 11, fig. 14). The centre point of the drill hole in the subconstruction must coincide with the centre point of the drill hole in the m.look panel. Drill with a centring piece! The fastenings should be put in place starting from the middle of panel outwards.

Fixed Point

Fixed points are used for uniform distribution (halving) of the expansion and shrinkage movements. The diameter of the drill hole in m.look is the same size as the diameter of the fastening.

Niro/Niro-Blind Rivet

with big head colour lacquered for steel subconstructions.
 Rivet sleeve: material-no. 1.4567 (A2)
 Rivet pin: steel material-no. 1.4541 (A2)
 Pull-off strength of rivet pin: $\leq 5,8$ KN

Diameter of the drill hole in the m.look panel.
 Sliding points: 8.5 mm or as required.
 Fixed points: 5.1 mm
 Diameter of drill hole in the metal subconstruction: 5.1 mm
 When working with metal substructures, be sure to use stainless steel rivets.

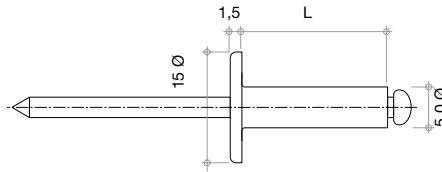


Fig. 25

Balcony Corners

Especially, in some circumstances, when refurbishing with very uneven subconstructions, it is important to have the front panel protrude about 10 mm in front of the side panel. In this way, inaccuracies can be concealed from the main viewing side.

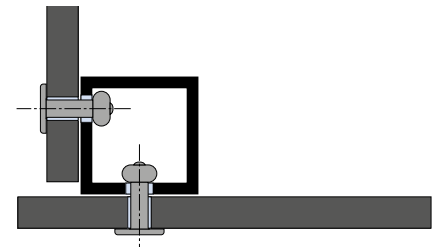


Fig. 26

Balconies and railings Mounting in Germany

Fall Protection

The non-combustible m.look panel with an A2-s1,d0 classification in accordance with EN 13501-1, was tested at IFT Rosenheim as fall protection in accordance with the ETB guideline "Building Components that Safeguard against

Falling" and achieved the rating of suitable for installation area 1 (standard application, office, residential building, etc.) and installation area 2 (crowds, stadiums, train stations, etc.).

Railings

The variations in the given geometry can also be designed for railings. The railing or handrail heights are to be designed in accordance with local building codes, and in addition it must be ensured that the construction does not create any climbing assistance.

Balcony system with horizontal belts. Riveted m.look panels. Riveting as described on this page

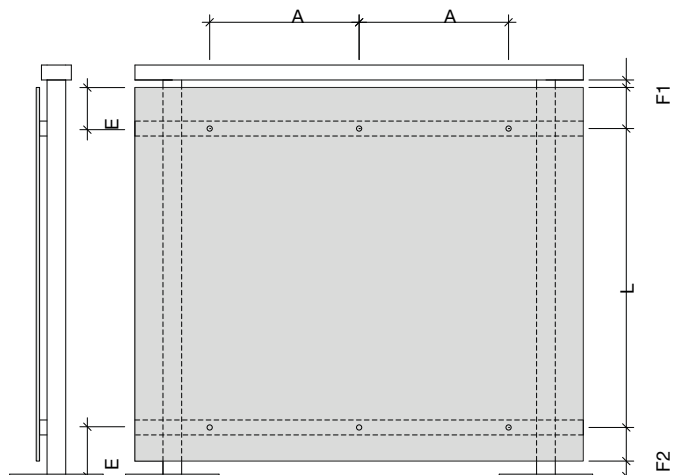


Fig. 27

Panel thickness in mm	Maximum fastening spacing	Projecting ends E
7 mm	A 200 mm	20 - 120 mm
	L 800 mm	
9 mm	A 400 mm	20 - 200 mm
	L 800 mm	

Table 8

F1 ≤ 15 mm
 F2 ≤ 45 mm

m.look Balconies and Railings

Balconies and railings Mounting in Austria

Fall Protection

The non-combustible m.look panel with an A2-s1, d0 classification in accordance with EN 13501-1 was tested by MA39 for fall protection in accordance with ÖNORM B-3716-3 and EN 12600 and achieved safety class 3 and utilization classes A, B1, B2, C1, C2, C3, D & E.

Panel thickness in mm	Maximum fastening spacing	Projecting ends E
9 mm	A 200 - 400 mm	20 - 200 mm
	L 300 - 800 mm	

Table 9

Balcony system with horizontal belts

Riveted m.look panels. Riveting as described on page 19

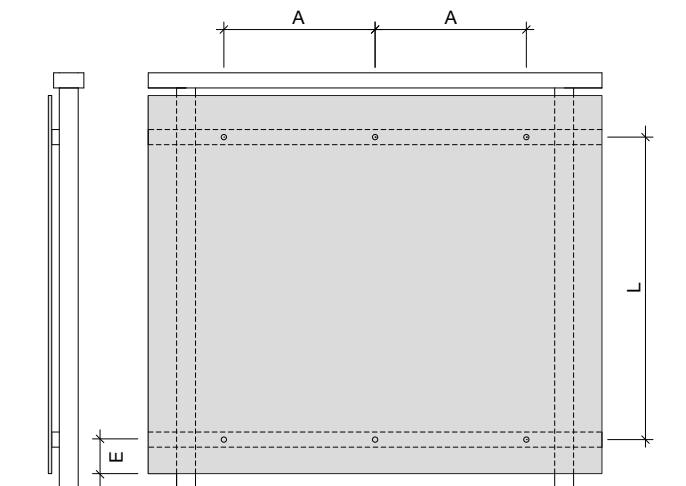


Fig. 28

Balcony system with steel uprights

Riveted m.look panels. Riveting as described on page 19

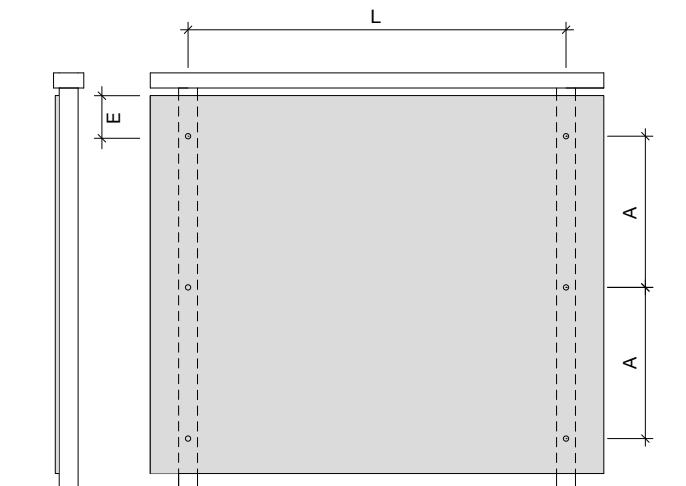


Fig. 29

The height of the railing must comply with the local building regulations.

Railing system with horizontal belts
Riveted m.look panels. Riveting as described on page 19

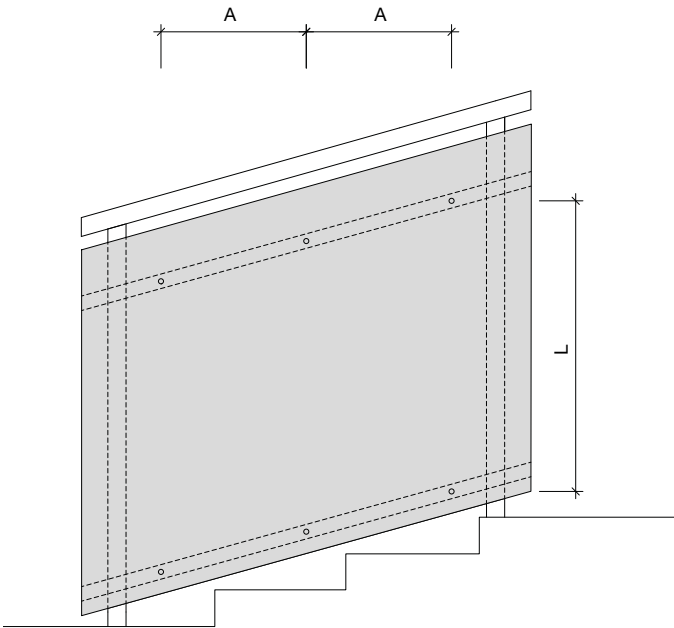


Fig. 30

Railing system with steel uprights
Riveted m.look panels. Riveting as described on page 19

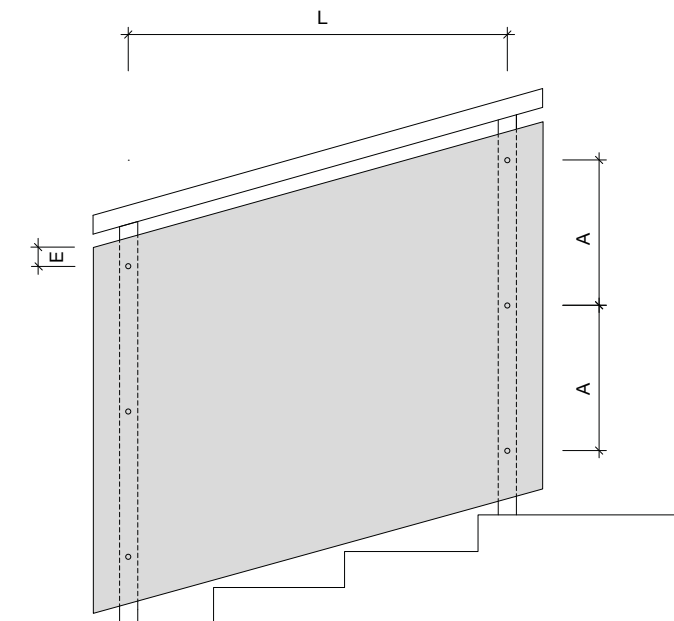


Fig. 31

Further railing variations are possible provided the recommended mounting distance is observed.

m.look Recommendations for working

Transport and Handling

To avoid damaging the edges and surfaces of the high quality material, it should be handled with care.

Two people are required to safely install panels larger than 2,000 x 1,000 mm. Ensure the panels are kept clean and free of dirt and grit in order to avoid damage to their surfaces.

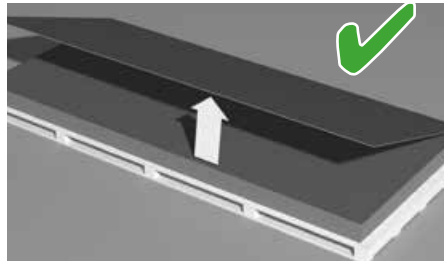
Basis weight: 13,5 kg/m²

FunderMax m.look panels must be secured to prevent shifting during transport. The panels must be lifted when they are loaded or unloaded. Do not pull or push them over the edge of the stack!

Maximum weight of the pallets: 1800 kg (gross)

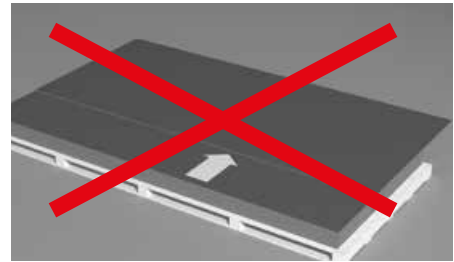
m.look panels can also be delivered with a protective film upon request.

Protective films must always be removed from both sides at the same time. The protective film must not be exposed to heat or direct sunlight.



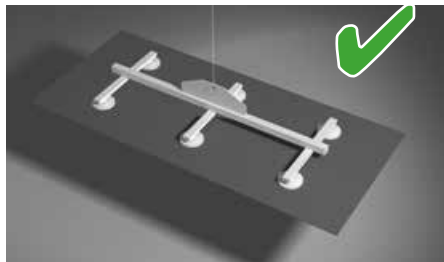
Always lift the panel

Fig. 22



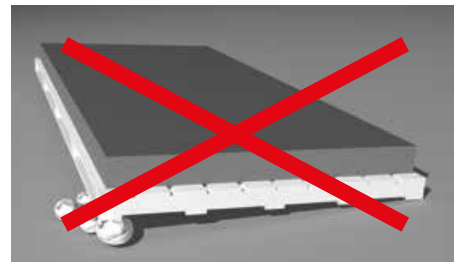
Do not slide the panel from the stack

Fig. 23



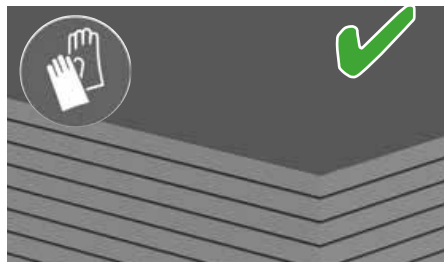
Use lifting system for large-sized panels.

Fig. 24



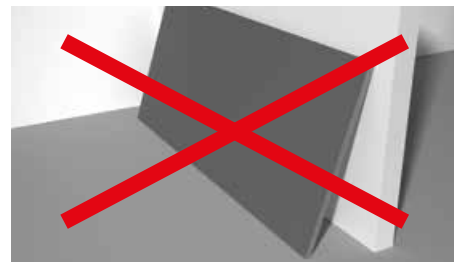
Always place the panels on a flat surface

Fig. 25



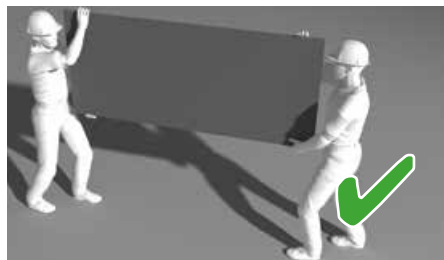
Caution: sharp edges!

Fig. 26



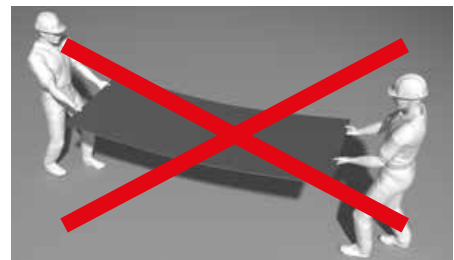
Do not lean the panels upright

Fig. 27



Always carry the panels vertically with two people.

Fig. 28



Do not carry the panels horizontally!

Fig. 29

Hint for final cleaning

Please ensure that foreign substances (e.g. drilling and machine oils, greases, adhesive residues, etc.) that soil the surface of the m.look panels during storage, installation and use are removed immediately without leaving any residue.

We recommend using non-greasy sunscreens (e.g. Physioderm Physio UV 50 Spray), as soiling with conventional sunscreens is often impossible to remove

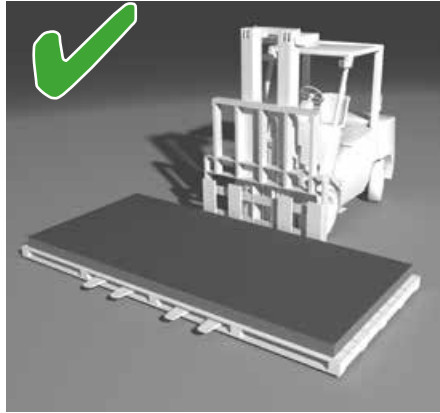
completely even when cleaned immediately.

No responsibility will be accepted for any complaints regarding color, gloss and surface of the panels should these recommendations fail to be observed.

For details on how to properly clean m.look panels, see page 30.

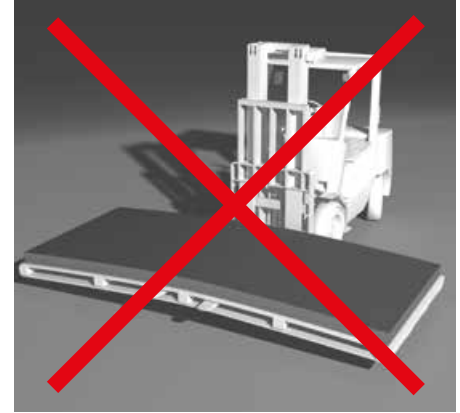
Pallet Handling

When transporting and lifting the pallets it is essential to use an appropriate forklift with wide forks or a crane with lifting points uniformly distributed along the length of the pallet. Do not stack pallets of cut panels.



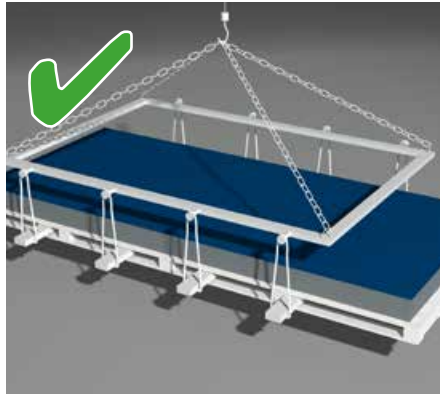
Proper forklift transport

Fig. 30



Improper forklift transport

Fig. 31



Proper crane transport

Fig. 32



Improper crane transport

Fig. 33

Storage and air conditioning

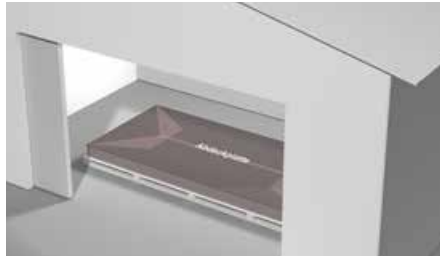
FunderMax m.look panels must be stacked horizontally on flat, stable supports and supporting panels. The goods must lie completely flat.

Always leave the stack of panels covered. The cover should be weighted to keep it in place.

After removing any panels, the PE film must be closed over the stack again. The same applies for stacks of cut panels.

Improper storage can lead to permanent deformation of the panels.

FunderMax m.look panels should be stored in closed rooms under normal climate conditions. Climate differences between both sides of the panel should be avoided.



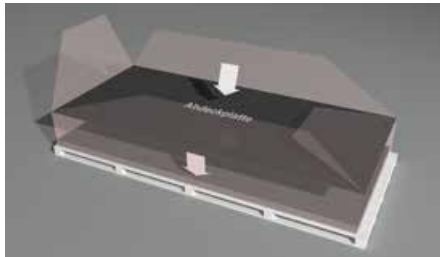
Do not store panels outdoors

Fig. 34



Always store panels on a level surface

Fig. 35



Always pack the panels in PE film

Fig. 36



Always store panels on a level surface and keep covered

Fig. 37

m.look Recommendations for working

Machining m.look Panels

General

We are happy to cut the panels to your specifications, including interior cutouts. For finishing cuts, please refer to the information below.

The surface of the FunderMax m.look panel consists of double hardened resins and is therefore very durable.

Finishing cuts on site must be performed with diamond-tipped tools. Sharp blades and smooth running tools are required to ensure proper machining. Improper handling or the use of unsuitable tools may result in the breaking, splintering or chipping of the decorative side of the panel. Tables should be smooth and preferably without joints to ensure that no shavings can get stuck there where they might damage the surface of the panel. A circular saw can be used for interior cutouts.

All the machining equipment should be designed with sealed bearings.

In order to avoid chipping the edges, it is necessary to bevel them with a sanding block (45 degrees, approx. 0.25 mm).

Please be sure to observe the standard safety rules when machining m.look panels and to wear proper safety gear such as gloves, long clothing, protective goggles, ear protection and dust protection.

Protective Goggles



When machining FunderMax m.look panels with tools that create shavings or chips, please be sure to wear tightly fitting protective goggles.

Ear Protection



When machining FunderMax m.look panels the noise levels may exceed 80dB(A). Please be sure to always wear adequate ear protection when machining m.look panels.

Dust Protection



Machining FunderMax m.look panels must be performed with suitable dust extraction to keep the work place dust free. Dust from machining the panels may lead to mechanical irritation of the skin and mucous membranes. Adequate respiratory protection (e.g. disposable dust mask P1) must be worn when machining the panels.

Gloves



Non-beveled cut edges are sharp. There is a risk of injury. It is recommended to wear category II protective gloves with at least category II cut resistance when handling freshly cut FunderMax m.look panels.

Safety Precautions

This is a list of the recommended personal protective equipment (PPE). The appropriate personal protective equipment required by health and safety regulations (long-sleeved work clothes, safety shoes, hair net, etc.) should always be worn when working with FunderMax m.look panels.

Drilling

Solid carbide spiral or dowel drill bits should be used. At machining centers it is recommended to use an insert in the main spindle instead of in the drilling head at a speed of 2,000 – 4,000 min⁻¹ and feed speed of 1.5 - 3 m/min.

The exit speed of the drill must be selected such that the surface of the m.look panel is not damaged. Just before the drill exits the rear side of the panel in its full diameter, the feed rate should be reduced by 50%. When drilling holes all the way through the panel, be sure to use a suitable base to ensure there is sufficient counter-pressure.



Leitz-drill bit 10 mm

Fig. 38



Leitz-drill bit HW-solid, Z2

Fig. 39



MBE VHM (carbide) facade drill bit

Fig. 40

m.look Recommendations for working

Installation

General

Avoid placing the panels on hard, stony surfaces. Suction handles can be used to place the panel in the correct mounting position (Fig. 45). The recommended joint spacing of 8 ± 1 mm between the panels can be achieved with spacers. We recommend using smooth spacers.

Machining

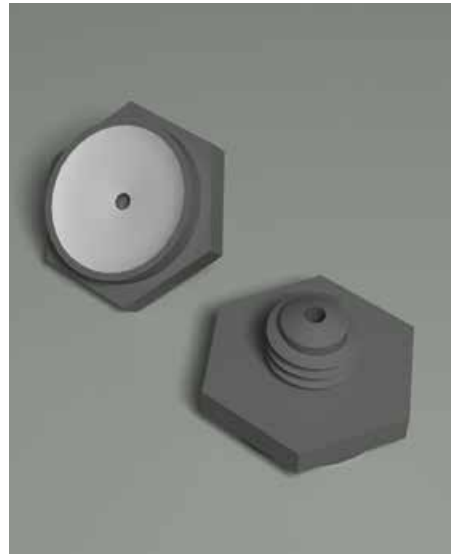
We are happy to provide prefabricated panels. To perform optimal final cuts, we recommend using a circular saw with (Fig. 46) dust extraction. Please observe the safety instructions on page 20. The center of the hole in the substructure must be aligned with the center of the hole in the m.look panel. We suggest using suitable drill guides (centering tool MBE, SFS) (Fig. 47). We recommend diamond-tipped core drills for drilling drill holes (Fig. 48).

Tools Required for Installation



Rivet gun/caliper

Fig. 41



Flexible mouthpiece

Fig. 42



Aluminium Substructure

Fig. 43



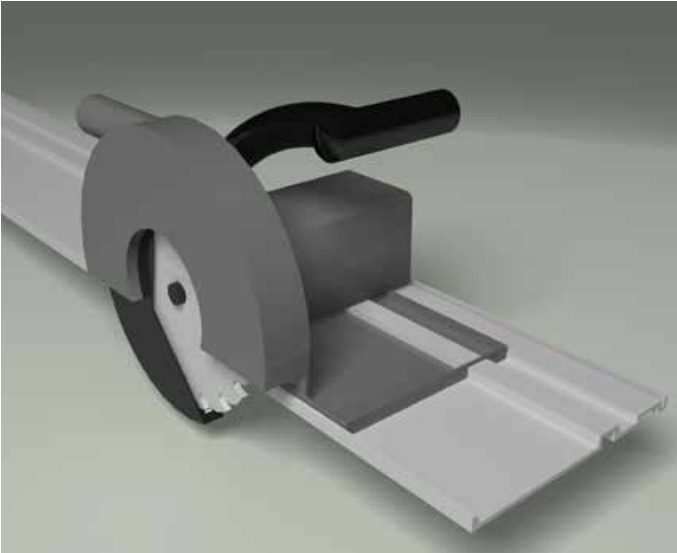
Drill

Fig. 44



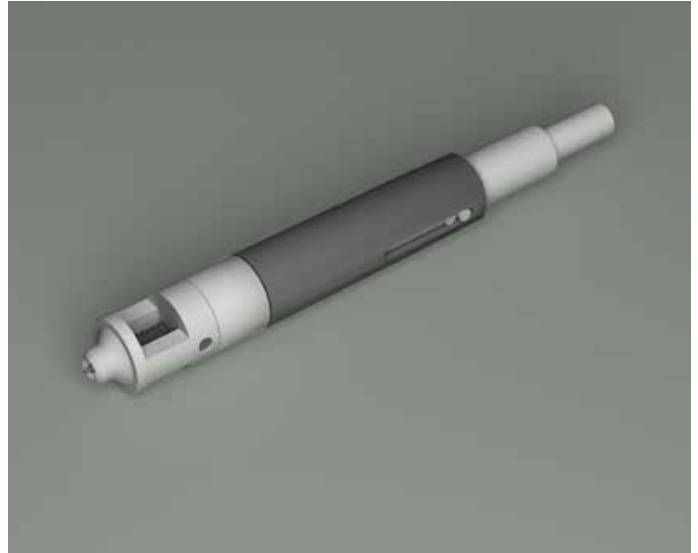
Suction handle

Fig. 45



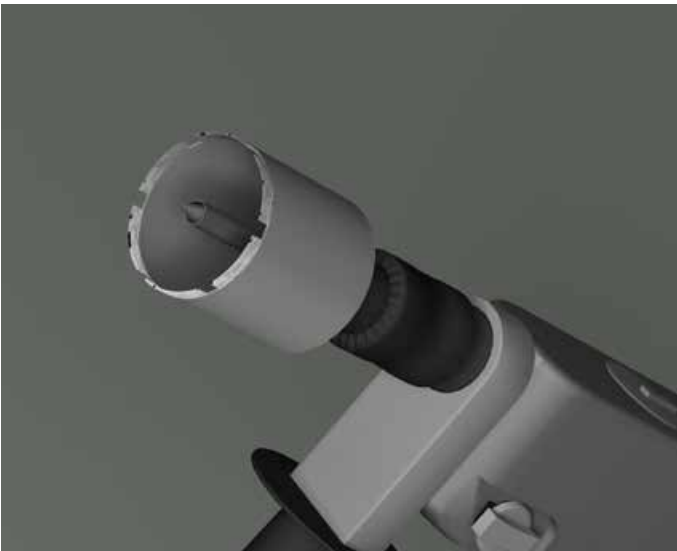
Circular saw with guide rail

Fig. 46



Drill centering tool

Fig. 47



Diamond-tipped core drill

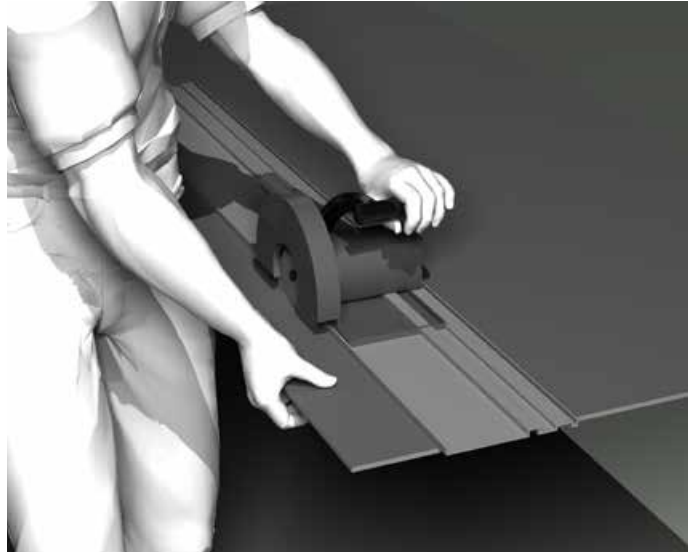
Fig. 48

m.look Recommendations for working

Element sizes

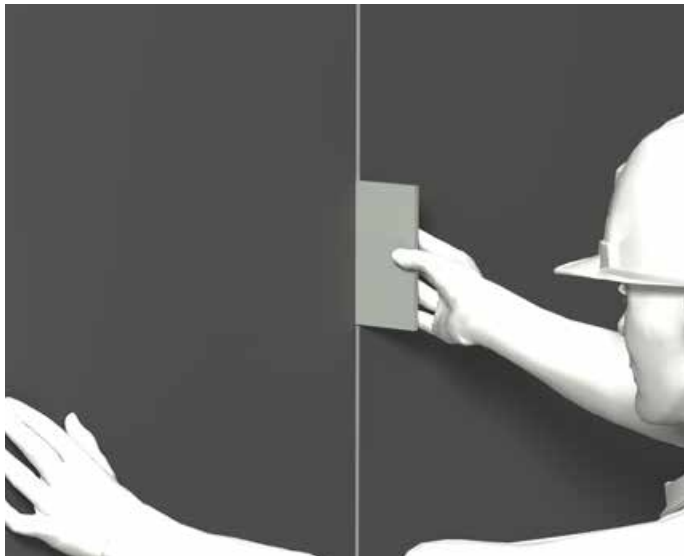
For installation by hand, the recommended m.look panel size is 2,000 x 1,000 mm. This size panel can easily be installed by two people. We recommend carrying the panel vertically (see Fig. 28).

For larger sizes, we recommend installing the panels with lifting equipment (Fig. 24).



Final cut

Fig. 49



Spacer for ensuring proper joint space

Fig. 50



Place panels with suction handles

Fig. 51

Rivets

The rivets are placed using an electric rivet gun/caliper (Fig.54).

Fixed points are riveted WITHOUT flexible mouthpiece.

Sliding points are riveted WITH special guides (Fig. 52 and 54).

The flexible mouthpiece ensures the distance of 0.3 mm between the panel and rivet head.

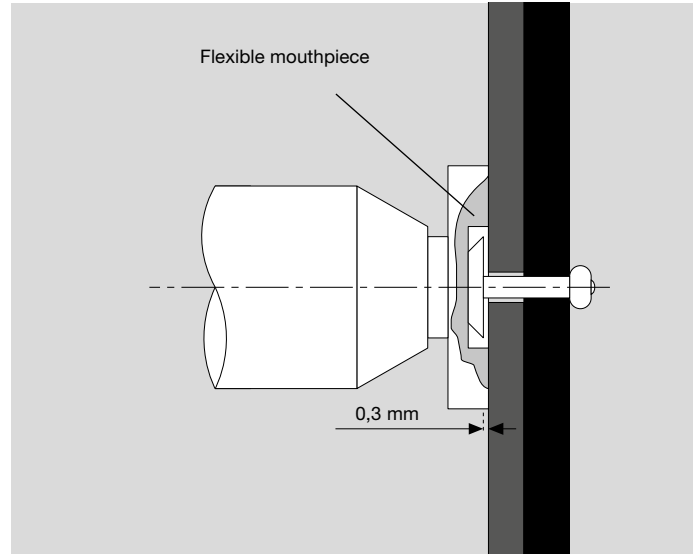
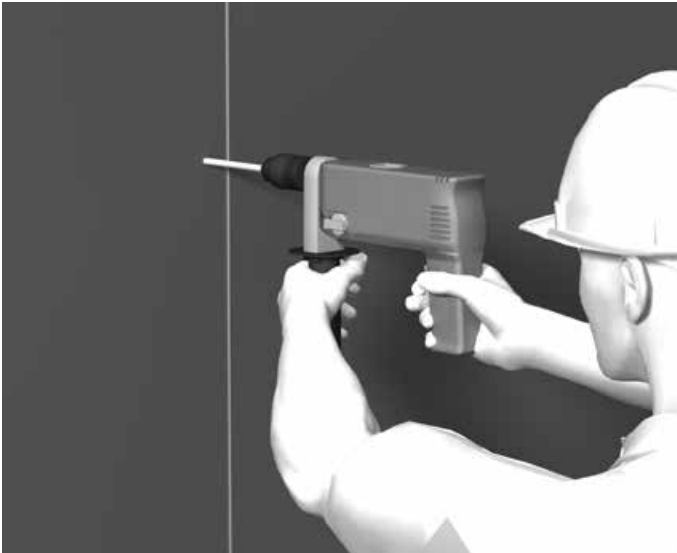
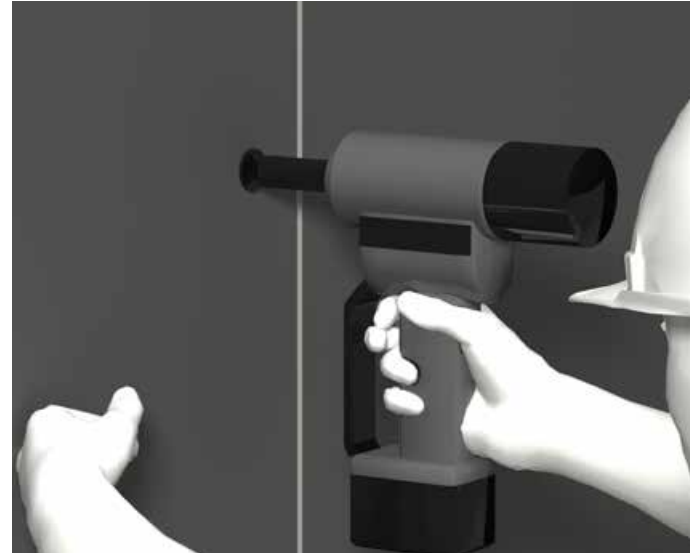


Fig. 52



Pre-drill panel

Fig. 53



Sliding point with flexible mouthpiece

Fig. 54

m.look Cleaning

Cleaning steps for m.look panels

For removing dust vacuum clean the surface and wipe off residual dust with a clean, dry cotton cloth. Finally wipe with a damp cloth.

For removing any other contamination please follow the cleaning steps until the desired cleaning effect.



Fig. 55

Step 1

Clean the surface with clean hot water and a soft sponge (DO NOT scrub the surface with the „green“ side of the sponge), a soft cloth or a soft brush (e.g. a nylon brush).

Step 2

If there is any dirt that can not be removed with a sponge and warm water, you can use normal, non-abrasive household cleaners such as dishwashing detergent (Palmolive, Fairy) or glass cleaner (Ajax, Frosch). Perform a final cleaning.

Step 3

If there is still any dirt that can not be removed, use a solution of soft soap and water (1:3). If the dirt is particularly stubborn, let it soak for a while. Perform a final cleaning.

Step 4

If any dirt is still remaining, you can repeat step 1 using organic solvents (e.g. acetone, ethyl alcohol, lacquer remover, turpentine).

If there is any dirt that still can not be removed, you can try scraping it off physically. Caution: To avoid scratching the panels, use a plastic or wooden spatula. Perform a final cleaning.

Step 5 (for Adhesives, Paints, Sealants or Silicone Residues)

Rub the surface with a soft dry cloth or a soft dry sponge. If the material still can not be removed, use silicone remover (for example from Molto) or ask the manufacturer of the adhesive for the ideal cleaning agents.

Caution: Hardened adhesive, 2K paints, foams and sealant can NO LONGER be removed.

Step 6

If the panel is still dirty you can repeat step 1, using liquid cleaner with polishing chalk (CIF, ATA). Only use liquid cleaner with polishing chalk sparingly! For extremely stubborn lime deposits you can also use acidic cleaning agents (e.g. 10% vinegar or citric acid). Perform a final cleaning.

Final cleaning

Completely remove any remaining detergent to avoid streaking. Finally, wash off with clean water and dry. Wipe the surface dry with an absorbent cloth or paper towel.

When cleaning with solvents: Observe the safety regulations! Always work with an open window! Do not work near any open flames!

m.look
Accessories/Suppliers

Substructure:

Austria

ALLFACE Befestigungstechnologie GmbH & CoKG
Aredstraße 29/Büro 222,
A-2544 Leobersdorf
Tel: +43 (0)2256/625 18
Fax: +43 (0)2256/625 18 18
E-mail: office@allface.com
www.allface.com

Hilti EUROFOX GmbH
Gewerbepark 10
A-2810 Lanzenkirchen
Tel.: +43 (0) 2627 42400-0
Fax: +43 (0) 2627 42400-40
www.eurofox.com

SLAVONIA BAUBEDARF
Hauffgasse 3-5 D/G
A-1110 Wien
Telefon: +43 (0) 1/769 69 29
Fax: +43 (0) 1/769 69 27
www.slavonia.c

BWM
Dübel und Montagetechnik GmbH
Ernst-Mey-Str. 1
D-70771 Leinfelden-Echterdingen
Tel.: +49 (0) 711 / 90 313-0
Fax: +49 (0) 711 / 90 313-20
www.bwm.de

Systema DWS Pohl GmbH
Margarete-Steiff-Str. 6
D-24558 Henstedt-Ulzburg
Tel.: +49 (0) 4193 / 99 11-40
Fax: +49 4193 / 99 11-49
www.pohlnet.com

NAUTH SL Fassadentechnik GmbH
Weinstr. 68 b
D-76887 Bad Bergzabern
Tel.: +49(0) 6343 7003-0
Fax: +49 (0) 6343 7003-20
www.nauth-sl.de

France

L.R ETANCO
38/40 Rue des Cormiers - BP 21
78401 CHATOU CEDEX (France)
Phone: +.33.1.3480.5288
Fax: +.33.1.3480.5240
www.etanco.fr

Switzerland

WAGNER SYSTEM AG
Werkstrasse 73
CH-3250 Lyss
Tel.: +41 32355 2722
Fax: +41 32355 2837
www.wagnersystem.ch

**Fastenings:
(mechanical)**

Austria

EJOT AUSTRIA GmbH
Grazer Vorstadt 146
A-8570 Voitsberg
phone +43 3142 2 76 00-0
fax +43 3142 2 76 00-30
E-mail: info@ejot.at
www.ejot.at

SFS Intec GmbH
Wiener Str. 29
A-2100 Korneuburg
Tel: +43 (0)2262 90 500-0
Fax + 43 (0)2262 90 500-930
E-mail: at.korneuburg@sfsintec.biz
www.sfsintec.at

Germany

MBE GmbH
Siemensstraße 1
D-58706 Menden
Tel.: +49 (0)2373 17430-0
Fax: +49 (0)2373 17430-11
www.mbe-gmbh.de

Switzerland

SFS intec AG (Headquarters)
Rosenbergsaustrasse 10
CH-9435 Heerbrugg
Tel.: +41 71 727 62 62
Fax: +41 71 727 53 07
E-Mail:gmi.heerbrugg@sfsintec.biz
www.sfsintec.biz

Profiles/Accessories:

Austria

Protektor Bauprofile GmbH
Hosnedlgasse 12
A-1220 Wien
Tel.: +43 (0)1 259 45 00-0
Fax: +43 (0)1 259 45 00-19
www.protektor.com

Germany

Protektorwerk
Florenz Maisch GmbH & Co.KG
Viktoriastraße 58
D-76571 Gaggenau
Tel.: +49 (0)7225 977-0
Fax: +49 (0)7225 977-111
www.protektor.com

France

PROTEKTOR S.A. BATI-PROFIL
Rue Pasteur Prolongée
F-94400 Vitry sur Seine
Tel.: +33 (0) 1 / 55 53 17 50
Fax: +33 (0) 1 / 55 53 17 40

FUNDERMAX®

FunderMax GmbH

Klagenfurter Straße 87-89
A-9300 St. Veit / Glan

Tel.: + 43 (0) 5 / 9494-0
Fax: + 43 (0) 5 / 9494-4200
mlook@fundermax.biz
www.mlook.at

MEMBER OF *Constantia* INDUSTRIES

FUNDERMAX FRANCE

3 Cours Albert Thomas
F-69003 Lyon
Tel.: + 33 (0) 4 78 68 28 31
Fax: + 33 (0) 4 78 85 18 56
infofrance@fundermax.at
www.fundermax.at

FUNDERMAX SPAIN

Pol. Ind. Can Salvatella Avda. Salvatella, 85-97
E-08210 Barberà del Vallès (Barcelona)
Tel.: + 34 93 729 63 45
Fax: + 34 93 729 63 46
info.spain@fundermax.biz
www.fundermax.es

FUNDERMAX INDIA PVT. LTD.

No. 13, 1st Floor, 13th Cross
Wilson Garden
IND-560027 Bangalore
Tel.: +91 80 4112 7053
Fax: +91 80 4112 7053
officeindia@fundermax.biz
www.fundermax.at

FUNDERMAX POLSKA SP. Z O.O.

ul. Rybitwy 12
PL-30722 Kraków
Tel.: + 48-12-65 34 528
Fax: + 48-12-65 70 545
infopoland@fundermax.biz

FUNDERMAX SWISS AG

Industriestrasse 38
CH-5314 Kleindöttingen
Tel.: +41 (0) 56 2680 83 11
Fax: +41 (0) 56 2680 83 10
infoswiss@fundermax.biz
www.fundermax.ch

FUNDERMAX NORTH AMERICA, INC.

2015 Ayrsley Town Blvd. Suite 202
Charlotte, NC 28273, USA
Tel.: +1 980 299 0035
Fax: +1 704 280 8301
office.america@fundermax.biz
www.fundermax.at

