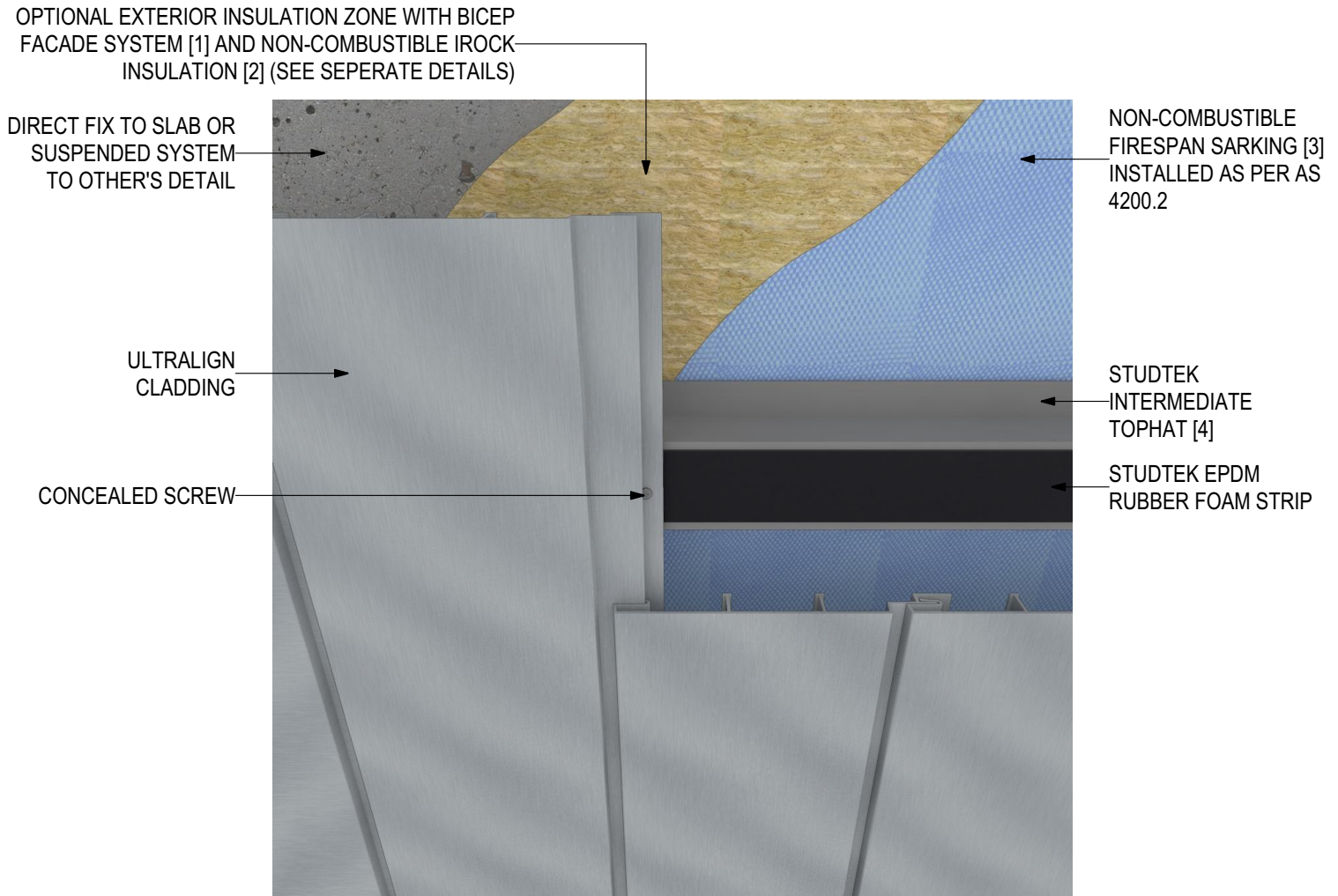




## INSTALLATION DETAILS

### ULTRALIGN Soffit Installation (V0323)



## SYSTEM COMPONENTS

BICEP FACADE  
SYSTEM [1]



IROCK  
INSULATION [2]



FIRESpan  
SARKING [3]



STUDTEK  
TOPHAT [4]



CLADTRIM  
TRIMS [5]



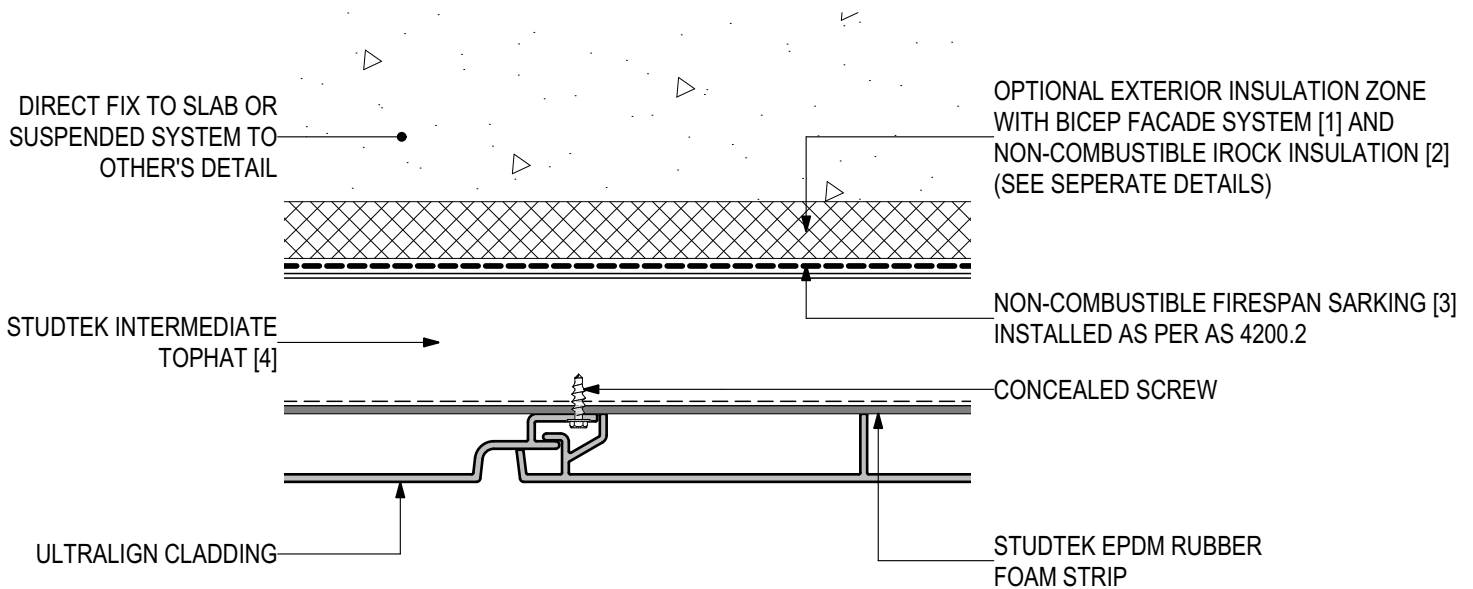
PROLASTIK  
SEALANT [6]





## D.01 - TYPICAL DETAIL - END VIEW (SCALE 1:2)

### ULTRALIGN Soffit Installation (V0323)



## SYSTEM COMPONENTS

BICEP FACADE  
SYSTEM [1]



IROCK  
INSULATION [2]



FIRESPAN  
SARKING [3]



STUDTEK  
TOPHAT [4]



CLADTRIM  
TRIMS [5]



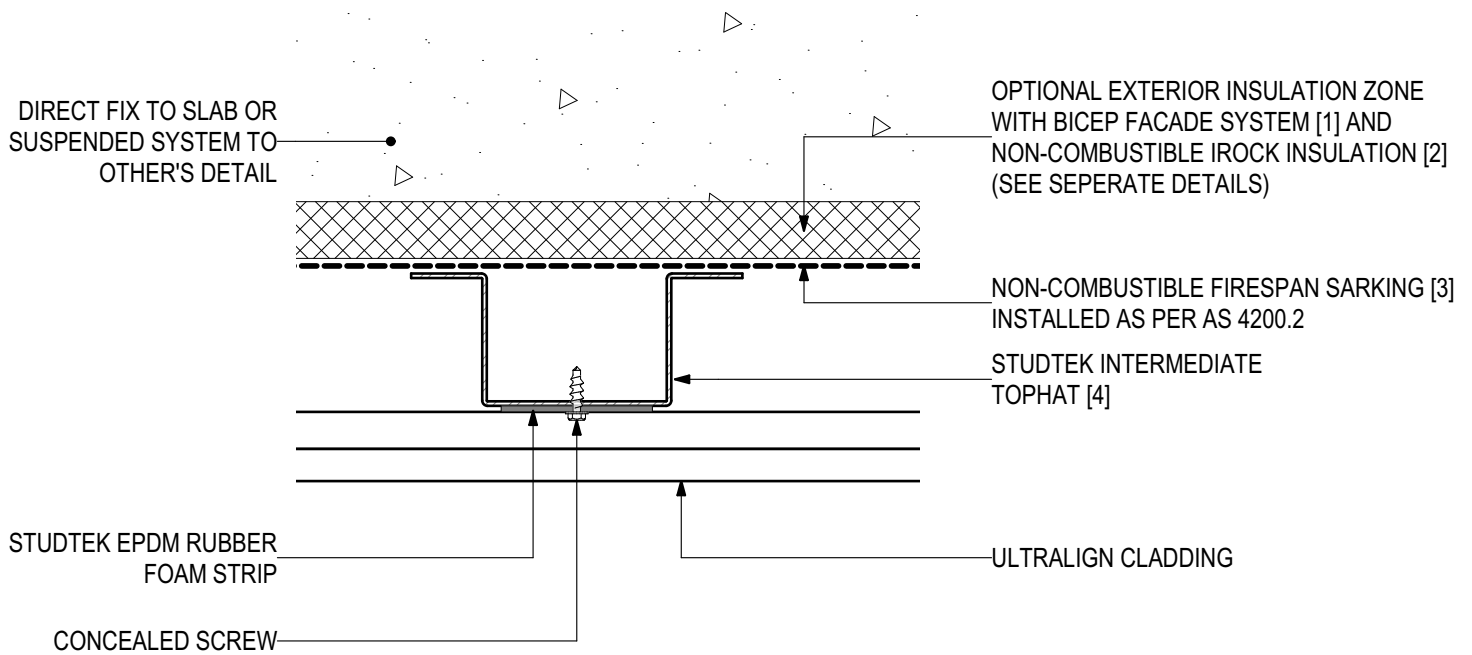
PROLASTIK  
SEALANT [6]





## D.02 - TYPICAL DETAIL - SIDE VIEW (SCALE 1:2)

### ULTRALIGN Soffit Installation (V0323)



## SYSTEM COMPONENTS

BICEP FACADE  
SYSTEM [1]



IROCK  
INSULATION [2]



FIRESpan  
SARKING [3]



STUDTEK  
TOPHAT [4]



CLADTRIM  
TRIMS [5]



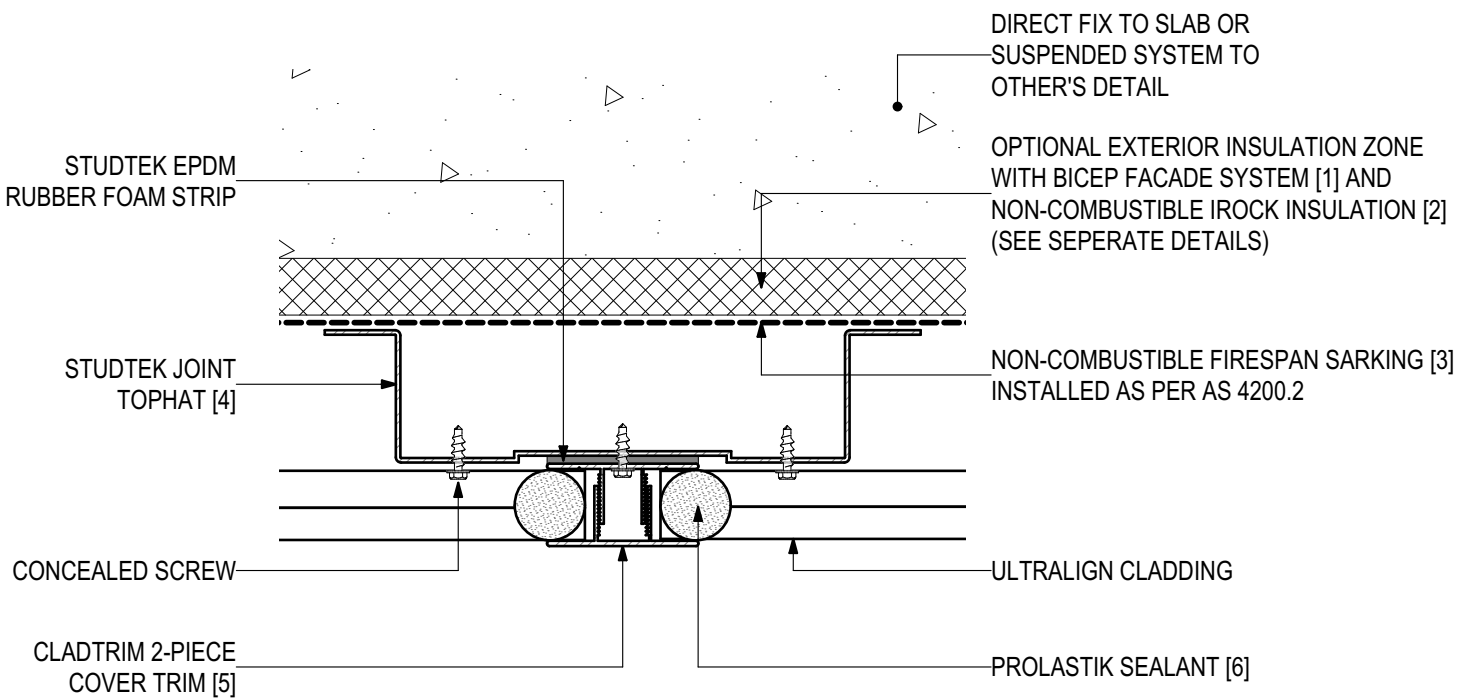
PROLASTIK  
SEALANT [6]





## D.03 - BUTT JOINT DETAIL WITH COVERSTRIP (SCALE 1:2)

### ULTRALIGN Soffit Installation (V0323)



## SYSTEM COMPONENTS

BICEP FACADE SYSTEM [1]



IROCK INSULATION [2]



FIRESpan SARKING [3]



STUDTEK TOPHAT [4]



CLADTRIM TRIMS [5]



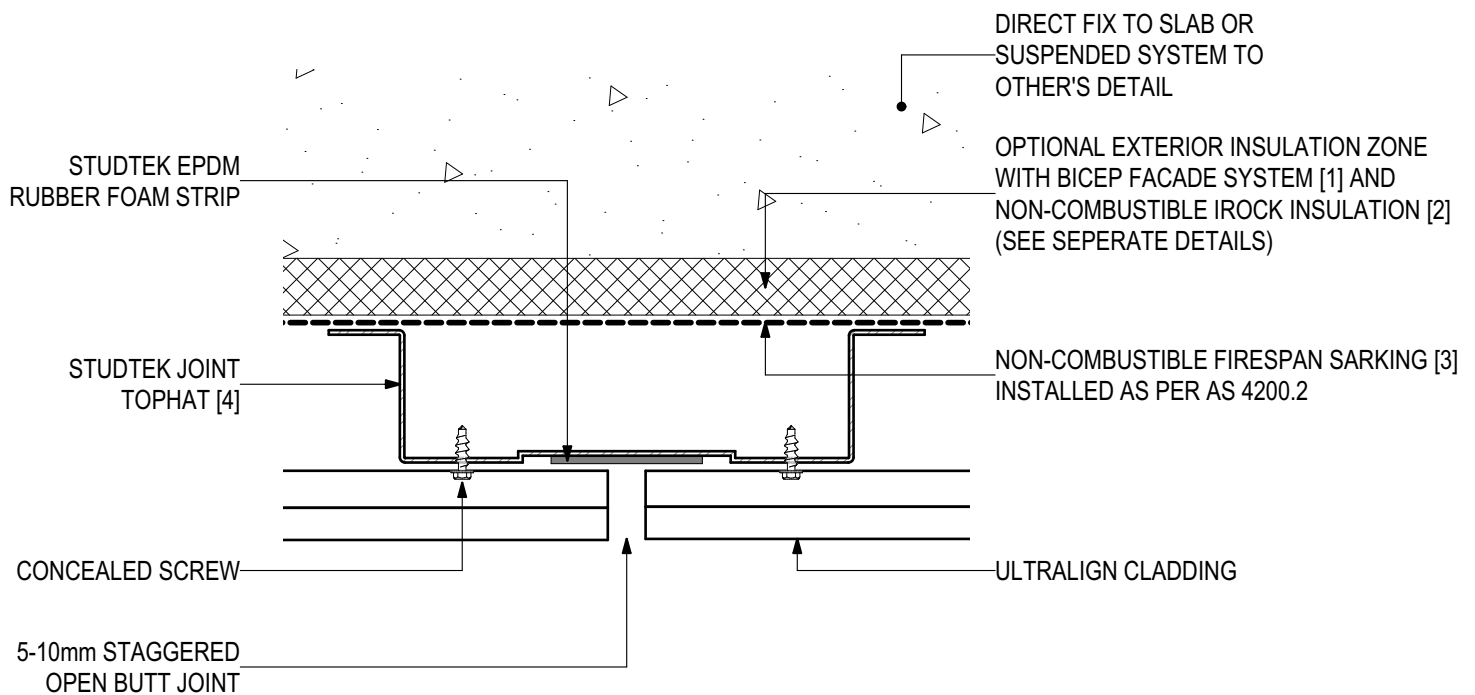
PROLASTIK SEALANT [6]





## D.04 - OPEN BUTT JOINT DETAIL (SCALE 1:2)

### ULTRALIGN Soffit Installation (V0323)



## SYSTEM COMPONENTS

BICEP FACADE SYSTEM [1]



IROCK INSULATION [2]



FIRESPAN SARKING [3]



STUDTEK TOPHAT [4]



CLADTRIM TRIMS [5]



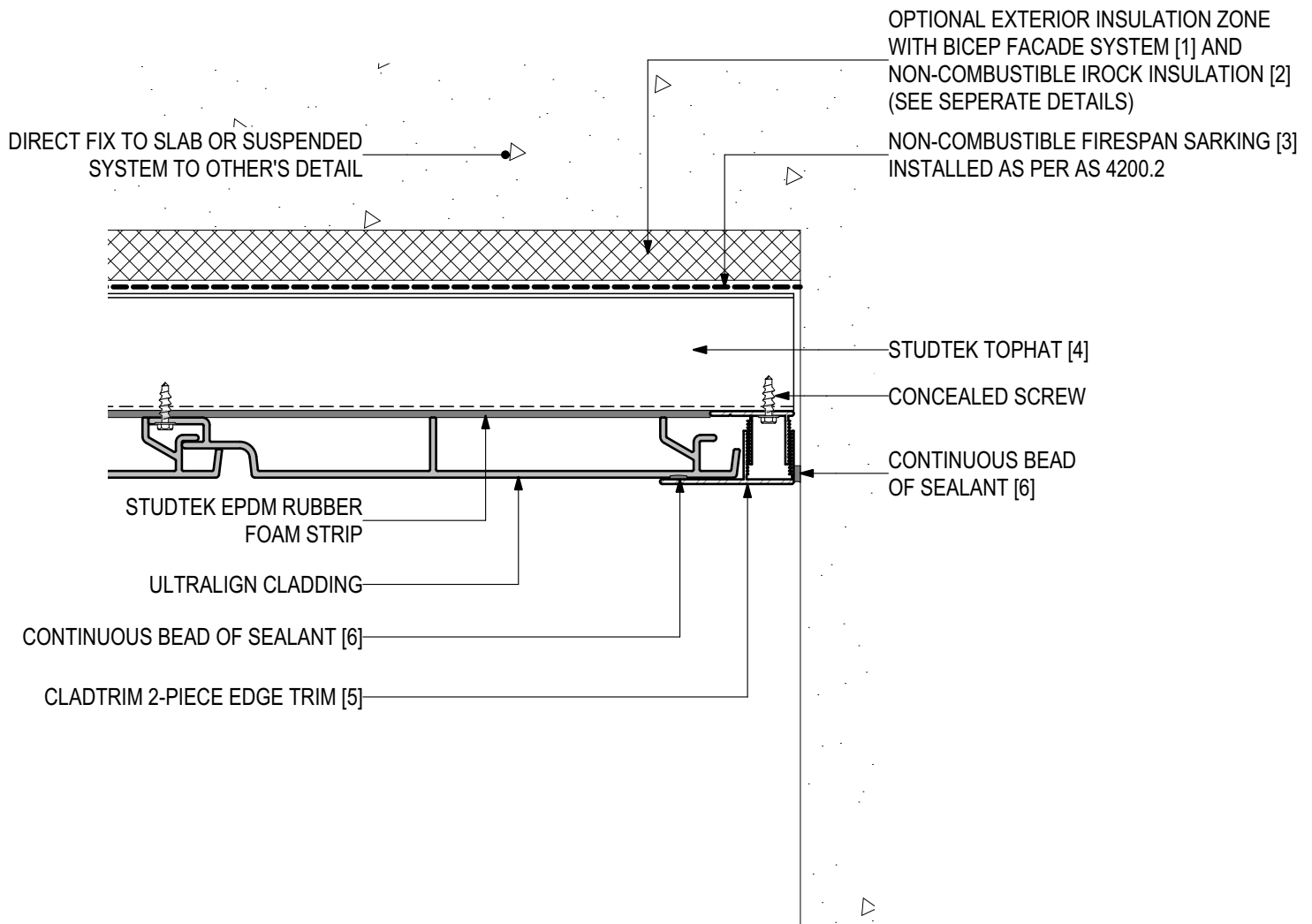
PROLASTIK SEALANT [6]





## D.05 - FLUSH EDGE DETAIL - END VIEW (SCALE 1:2)

### ULTRALIGN Soffit Installation (V0323)



## SYSTEM COMPONENTS

BICEP FACADE  
SYSTEM [1]



IROCK  
INSULATION [2]



FIRESpan  
SARKING [3]



STUDTEK  
TOPHAT [4]



CLADTRIM  
TRIMS [5]



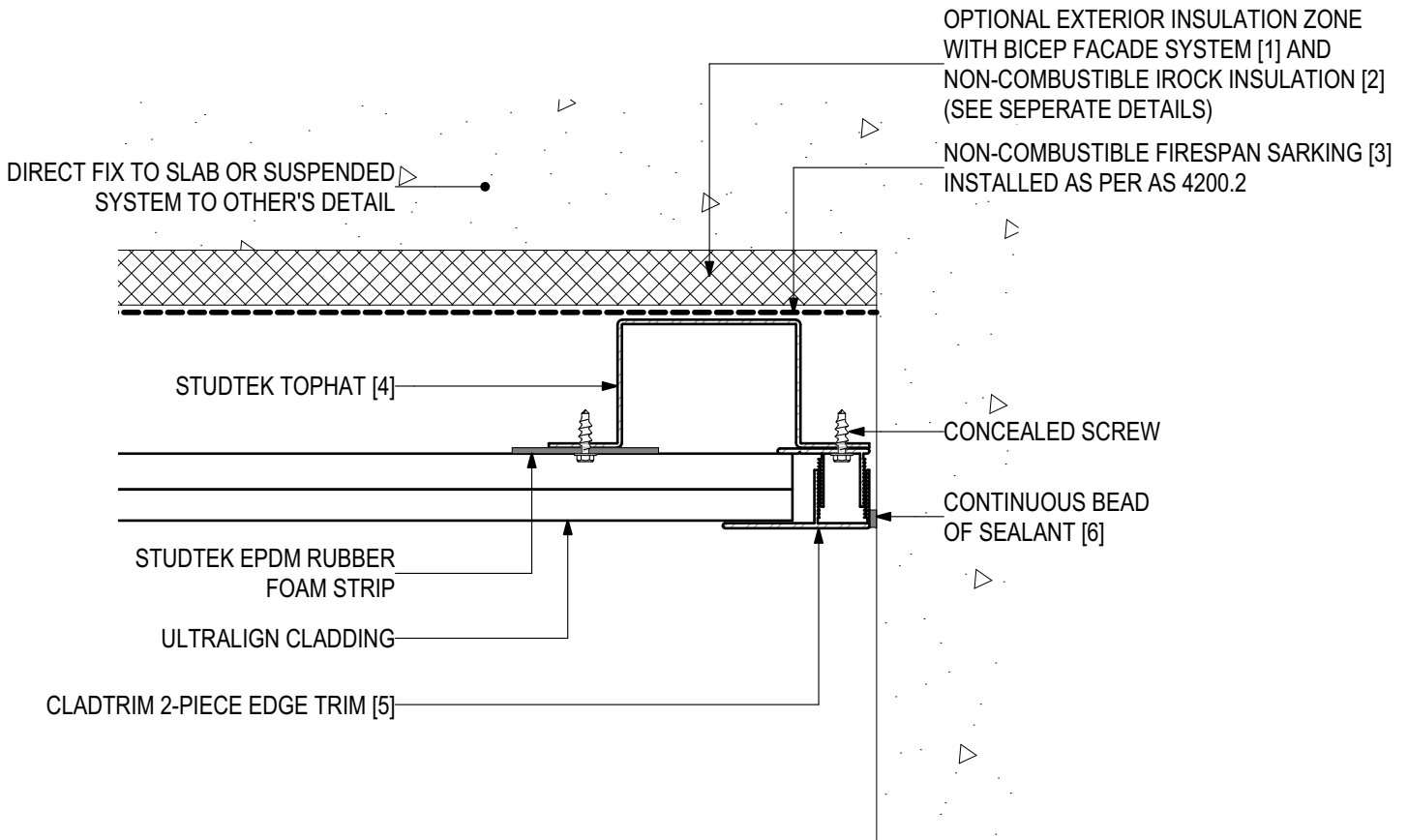
PROLASTIK  
SEALANT [6]





## D.06 - FLUSH EDGE DETAIL - SIDE VIEW (SCALE 1:2)

### ULTRALIGN Soffit Installation (V0323)



## SYSTEM COMPONENTS

BICEP FACADE SYSTEM [1]



IROCK INSULATION [2]



FIRESpan SARKING [3]



STUDTEK TOPHAT [4]



CLADTRIM TRIMS [5]



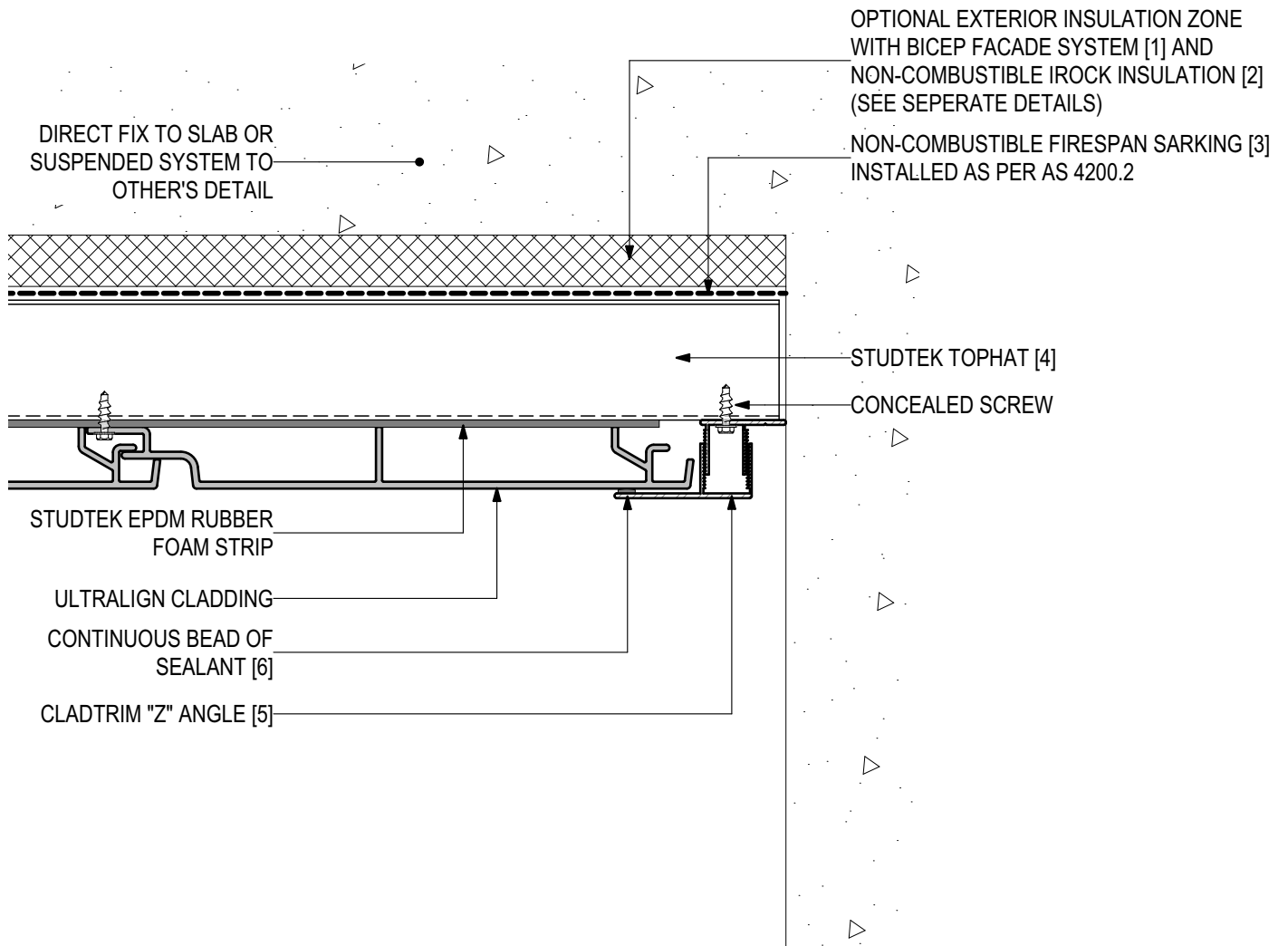
PROLASTIK SEALANT [6]





## D.07 - NEGATIVE EDGE DETAIL - END VIEW (SCALE 1:2)

### ULTRALIGN Soffit Installation (V0323)



## SYSTEM COMPONENTS

BICEP FACADE  
SYSTEM [1]



IROCK  
INSULATION [2]



FIRESpan  
SARKING [3]



STUDTEK  
TOPHAT [4]



CLADTRIM  
TRIMS [5]



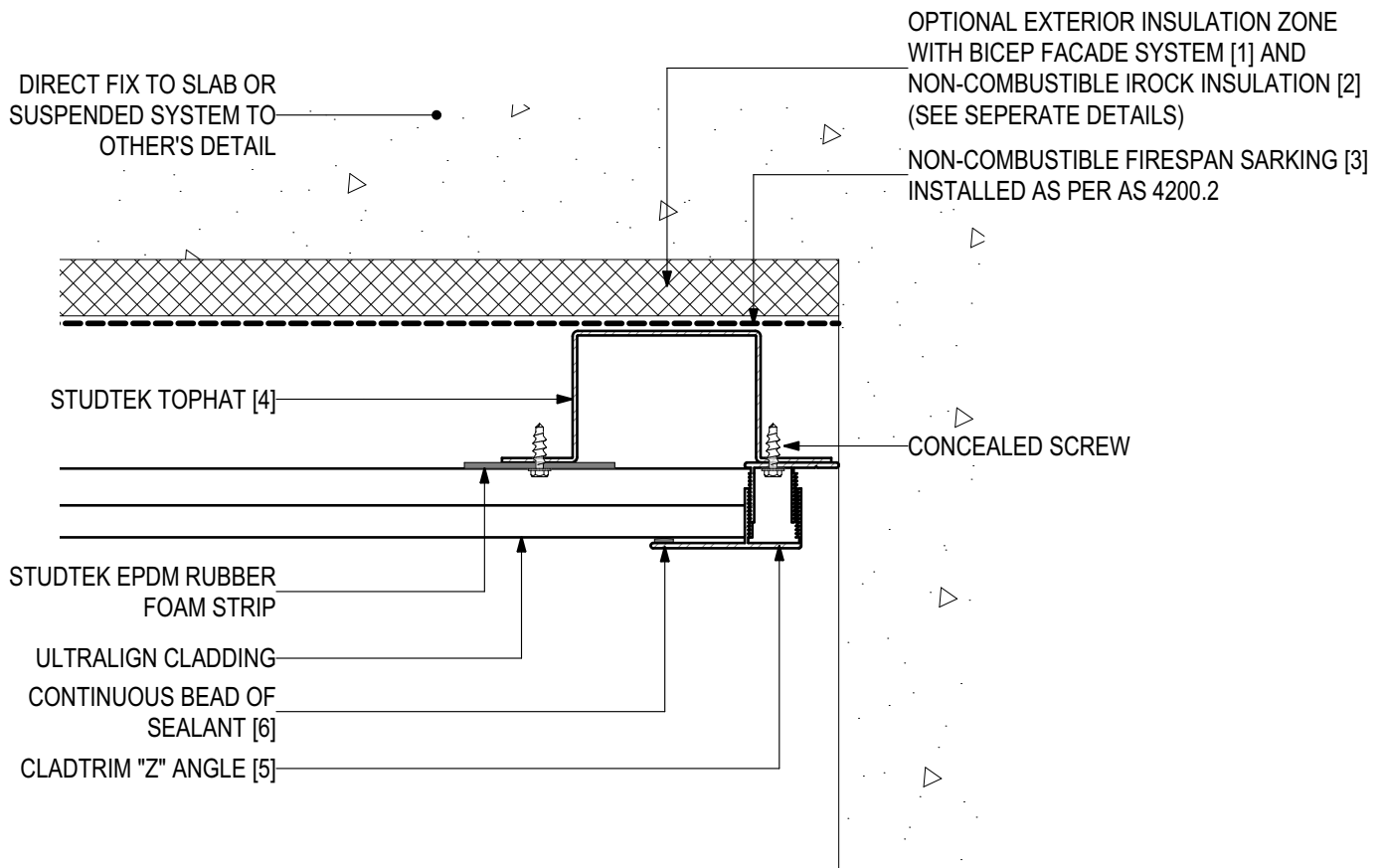
PROLASTIK  
SEALANT [6]





## D.08 - NEGATIVE EDGE DETAIL - SIDE VIEW (SCALE 1:2)

### ULTRALIGN Soffit Installation (V0323)



## SYSTEM COMPONENTS

BICEP FACADE  
SYSTEM [1]



IROCK  
INSULATION [2]



FIRESpan  
SARKING [3]



STUDTEK  
TOPHAT [4]



CLADTRIM  
TRIMS [5]



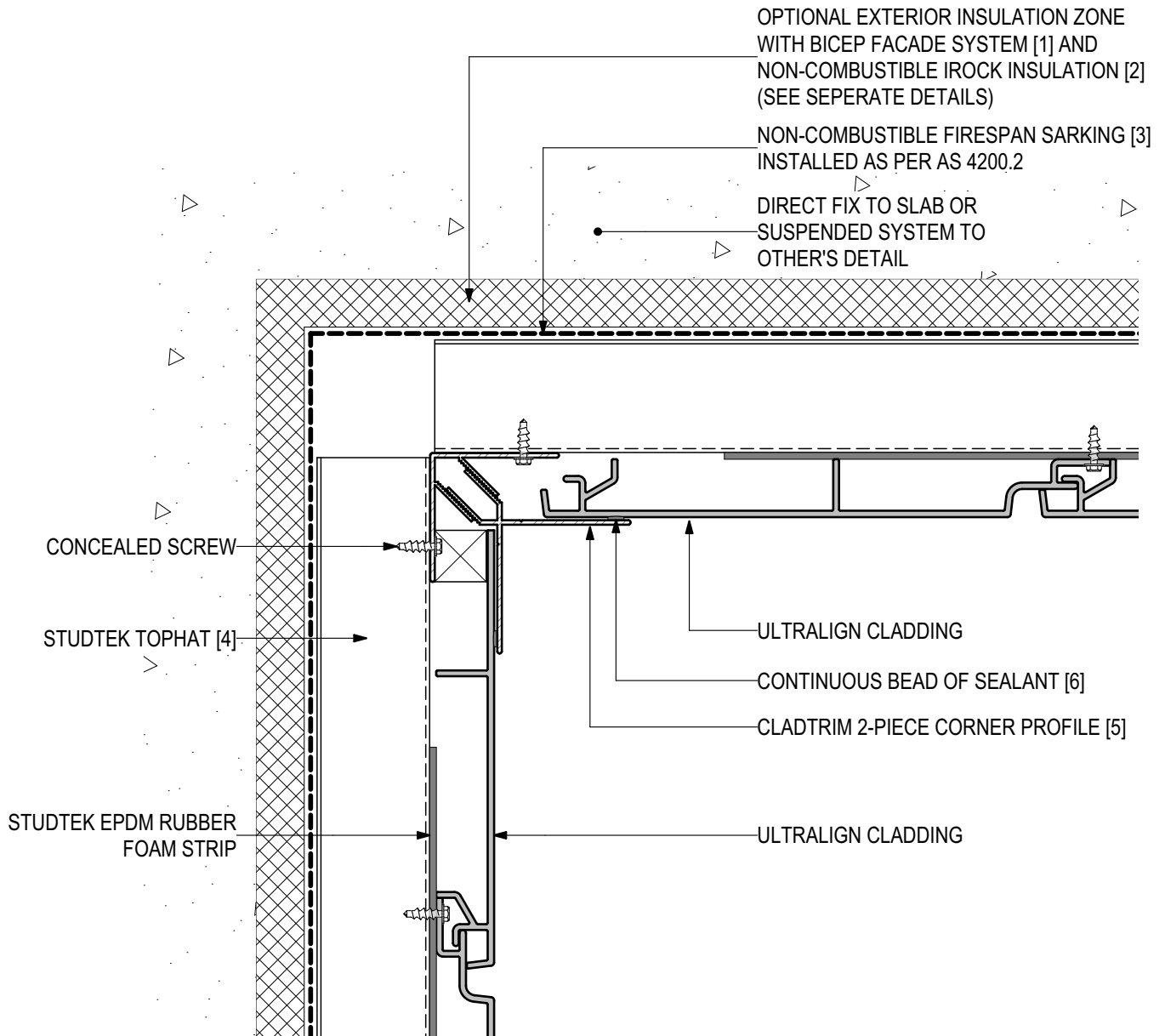
PROLASTIK  
SEALANT [6]





## D.09 - SOFFIT TO WALL DETAIL - END VIEW (SCALE 1:2)

### ULTRALIGN Soffit Installation (V0323)



## SYSTEM COMPONENTS

BICEP FACADE  
SYSTEM [1]



IROCK  
INSULATION [2]



FIRESPAN  
SARKING [3]



STUDTEK  
TOPHAT [4]



CLADTRIM  
TRIMS [5]



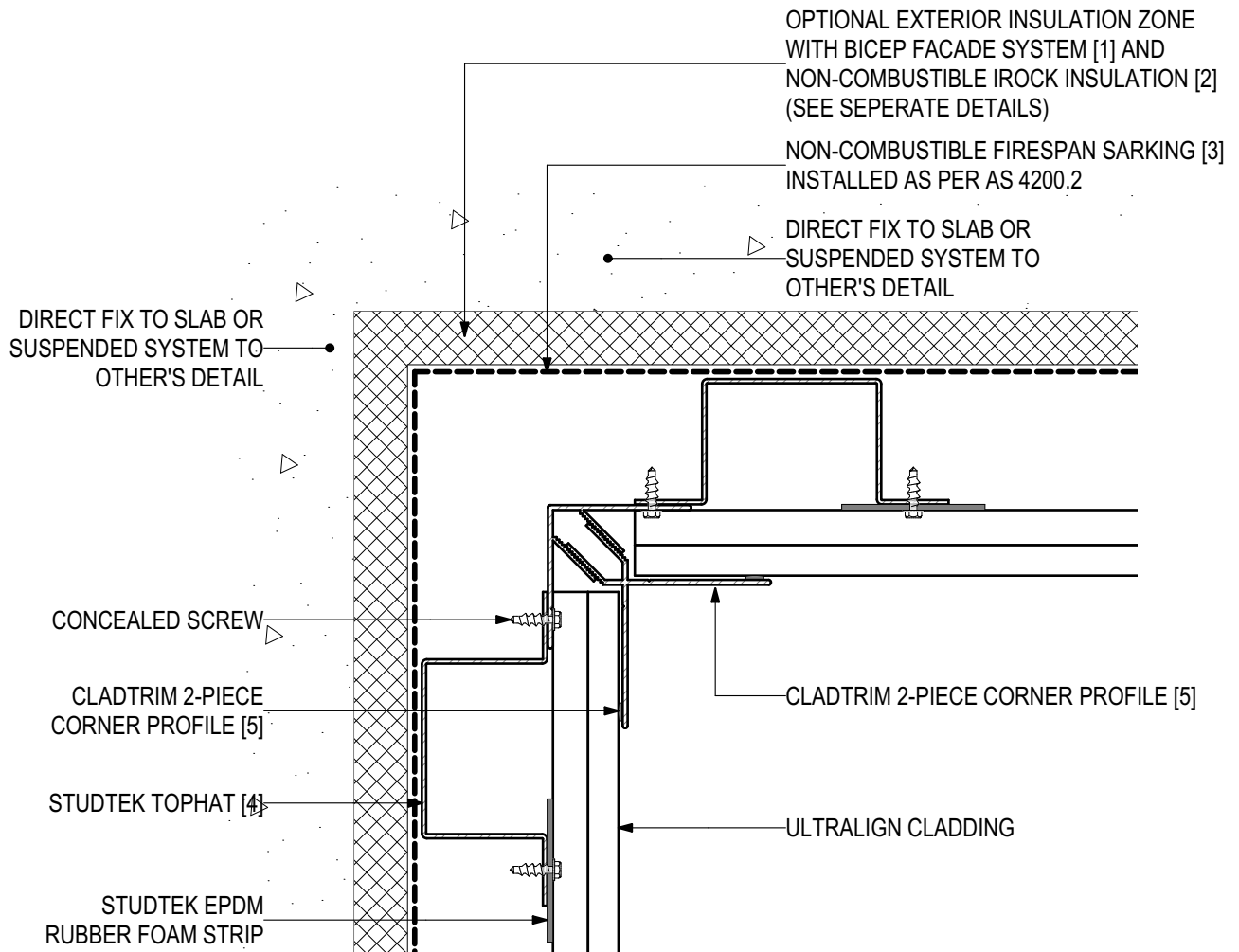
PROLASTIK  
SEALANT [6]





## D.10 - SOFFIT TO WALL DETAIL - SIDE VIEW (SCALE 1:2)

### ULTRALIGN Soffit Installation (V0323)



## SYSTEM COMPONENTS

BICEP FACADE SYSTEM [1]



IROCK INSULATION [2]



FIRESPAN SARKING [3]



STUDTEK TOPHAT [4]



CLADTRIM TRIMS [5]



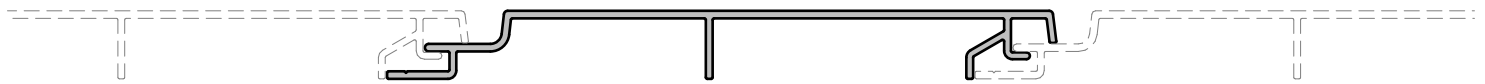
PROLASTIK SEALANT [6]



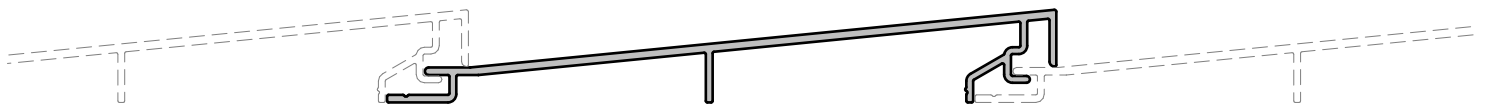


## ULTRALIGN PROFILES (SCALE 1:2)

### ULTRALIGN Soffit Installation (V0323)



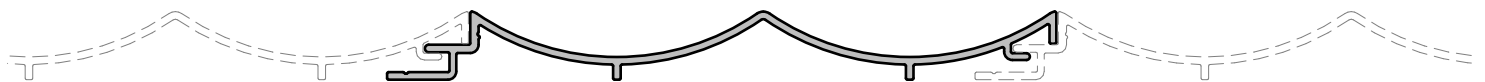
**ULTRALIGN 155x18mm GROOVE PROFILE**



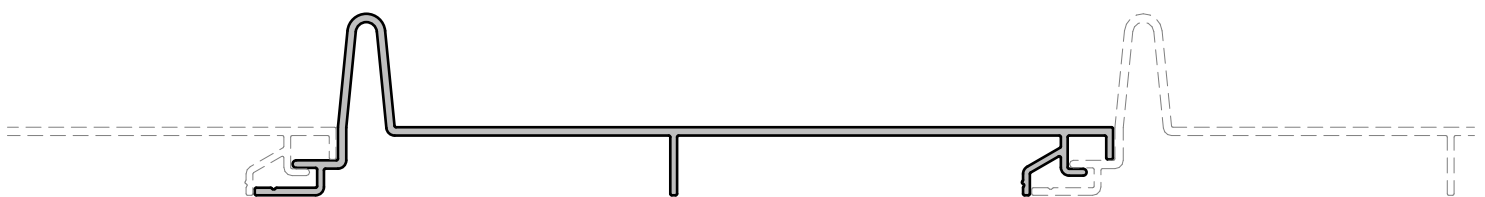
**ULTRALIGN 155x25mm CABIN PROFILE**



**ULTRALIGN 155x18mm CONCAVE PROFILE**



**ULTRALIGN 155x18mm DUOCAVE PROFILE**



**ULTRALIGN 205x48mm SEAM PROFILE**

## SYSTEM COMPONENTS

BICEP FACADE  
SYSTEM [1]



IROCK  
INSULATION [2]



FIRESPAN  
SARKING [3]



STUDEK  
TOPHAT [4]



CLADTRIM  
TRIMS [5]



PROLASTIK  
SEALANT [6]

