



BLUECHIP

Metal Cladding

ULTRALIGN

Battens Brochure

www.bluechipgroup.net.au



ULTRALIGN

Extruded Aluminium Battens

Description

ULTRALIGN extruded aluminium battens system is available in a range of solid aluminium profiles providing a reliable and attractive modern facade alternative to other commercial cladding products. ULTRALIGN battens have been specifically designed by experienced commercial facade professionals to meet the demands of today's facade industry. Australian made using the finest raw materials and finish options, ULTRALIGN battens offer an unprecedented level of quality, reliability, and longevity with an extensive range of colours, textures, and finish options, available in both standard and custom sizes.

Product Benefits



AS 1530.1 NON-COMBUSTIBLE

ULTRALIGN products are made of 100% solid aluminium which is totally non-combustible to AS 1530.1. Architects, engineers, and tenants can be assured ULTRALIGN will not burn or contribute to fire spread.



ENVIRONMENTALLY SUSTAINABLE

ULTRALIGN solid aluminium is a 100% recyclable product. Energy, emissions, wastage and materials are saved in every aspects of the product from manufacturing, to, delivery, installation and recycling.



2-PIECE INSTALLATION

The ULTRALIGN batten profiles have been intelligently designed to provide excellent usability such as a simple 2-piece clip-together mounting system with inbuilt screw flutes for secret fixing and structural integrity.



MINIMAL FABRICATION

ULTRALIGN battens can be ordered to custom lengths which eliminates additional fabrication. The base clip is fixed to the main structure before the battens are simply interlocked together and the end-caps screwed into place.



PREFINISHED SYSTEM

The entire ULTRALIGN range is pre-finished. This means there is no requirement for painting or onsite finishing. Our finish options are both attractive and durable, providing a protective coating over time.



INCREDIBLE AESTHETICS

ULTRALIGN battens come in 6 different sizes so architects can mix-and-match and use different length for infinite design possibilities. Add in any anodised or powdercoat finish and the options are limitless.



100% AUSTRALIAN MADE

ULTRALIGN is a 100% Australian owned, designed and made product, which contributes to it's outstanding quality and fast lead times. Using ULTRALIGN aids all aspects of the Australian economy.



CUSTOM DESIGNS

Locally Australian made, ULTRALIGN battens can be supplied in an almost infinite range of custom sizes, shapes and finishes. Contact us to discuss your unique vision for your next battens project.

INSTALL & TECHNICAL

For installation and technical information, scan the QR code and view 'Downloads' tab.



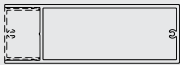
Profiles



Specification Code: UL*B5050 ULTRALIGN 50 x 50 Batten



Specification Code: UL*B10050 ULTRALIGN 100 x 50 Batten



Specification Code: UL*B15050 ULTRALIGN 150 x 50 Batten



Specification Code: UL*B20050 ULTRALIGN 200 x 50 Batten



Specification Code: UL*B25050 ULTRALIGN 250 x 50 Batten



Specification Code: UL*B30050 ULTRALIGN 300 x 50 Batten

Availability

CODE	DESCRIPTION	LEAD TIME	MOQ
UL*BC65	ULTRALIGN Batten Base Clip (Insert Colour), 6.5m Length	4-5 Weeks	1 Length
UL*UC65	ULTRALIGN Batten U-channel (Insert Colour), 6.5m Length	4-5 Weeks	1 Length
UL*B5050	ULTRALIGN 50 x 50mm Batten (Insert Colour), 6.5m Length	4-5 Weeks	1 Length
UL*B10050	ULTRALIGN 100 x 50mm Batten (Insert Colour), 6.5m Length	4-5 Weeks	1 Length
UL*B15050	ULTRALIGN 150 x 50mm Batten (Insert Colour), 6.5m Length	4-5 Weeks	1 Length
UL*B20050	ULTRALIGN 200 x 50mm Batten (Insert Colour), 6.5m Length	4-5 Weeks	1 Length
UL*B25050	ULTRALIGN 250 x 50mm Batten (Insert Colour), 6.5m Length	4-5 Weeks	1 Length
UL*B30050	ULTRALIGN 300 x 50mm Batten (Insert Colour), 6.5m Length	4-5 Weeks	1 Length

*The asterisk in the code denotes the specified type of finish to be applied to the aluminium extrusion as follows:
 U = Ultrawood Timber Colours, A = Anodised Colours, M = Material Colours and P = Powdercoat Colours.

Accessories

CODE	DESCRIPTION	LEAD TIME	MOQ
UL*EXXX50	ULTRALIGN XXX x 50mm End Cap (Insert Colour), 10 Pack	4-5 Weeks	1 Pack
CFM40X	ULTRAFIX 40mm x 8g End Cap Screw (Insert Colour), 100 Pack	3-4 Weeks	1 Pack

ULTRALIGN

Colour Chart

Anodised Earth Colours (Matt Finish)



UL1615
Paraburdoo

UL0825
Hamersley

UL1109
Karijini

UL0318
Chichester

Anodised Earth Colours (Satin Finish)



UL1313
Millstream

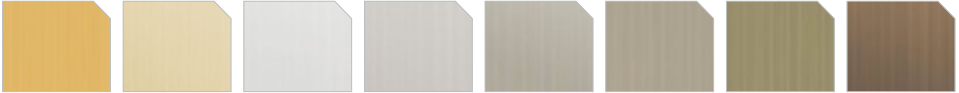
UL1318
Marble Bar

UL0705
Gascoyne

UL1825
Roxby



Anodised Space Colours



UL0320
Comet Trail*

UL1225
Light Year*

UL1305
Moonshine

UL1207
Lunar Glow

UL1914
Scintillation

UL0110
Astro Journey

UL0925
Infinity

UL0314
Constellation



UL1519
Orion Sky



UL1904
Stellar Distance

Material Colours



UL0102
Authentic
Brushed

UL0116
Authentic
Polished

UL0114
Authentic
Natural

UL0318
Coral Rust

UL0118
Authentic Rust

UL2118
Uluru Rust

UL0418
Dark Rust

UL2116
Uluru Polished



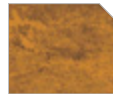
UL2114
Uluru Natural



UL0202
Bronze Brushed



UL1502
Ochre Brushed



UL1514
Ochre Natural

*Gold anodised colours: UL0320 Comet Trail and UL1225 Light Year will not be consistent and will have significant variation of colour and tone both between different lengths and within a single length.



Powdercoat Colours – visit duluxpowders.com.au

Premium Architectural Colour Selector

The Premium Architectural Colour Selector features products suitable for use on interior and exterior applications. It includes wear-resistant products up to 30 years durability.

	Durability	Interior	Exterior	Wear Resistant	Specialty
1	✓	✓	✓	✓	✓
2	✓	✓	✓	✓	✓
3	✓	✓	✓	✓	✓
4	✓	✓	✓	✓	✓
5	✓	✓	✓	✓	✓
6	✓	✓	✓	✓	✓
7	✓	✓	✓	✓	✓
8	✓	✓	✓	✓	✓
9	✓	✓	✓	✓	✓
10	✓	✓	✓	✓	✓
11	✓	✓	✓	✓	✓
12	✓	✓	✓	✓	✓
13	✓	✓	✓	✓	✓
14	✓	✓	✓	✓	✓
15	✓	✓	✓	✓	✓
16	✓	✓	✓	✓	✓
17	✓	✓	✓	✓	✓
18	✓	✓	✓	✓	✓
19	✓	✓	✓	✓	✓
20	✓	✓	✓	✓	✓
21	✓	✓	✓	✓	✓
22	✓	✓	✓	✓	✓
23	✓	✓	✓	✓	✓
24	✓	✓	✓	✓	✓
25	✓	✓	✓	✓	✓
26	✓	✓	✓	✓	✓
27	✓	✓	✓	✓	✓
28	✓	✓	✓	✓	✓
29	✓	✓	✓	✓	✓
30	✓	✓	✓	✓	✓
31	✓	✓	✓	✓	✓
32	✓	✓	✓	✓	✓
33	✓	✓	✓	✓	✓
34	✓	✓	✓	✓	✓
35	✓	✓	✓	✓	✓
36	✓	✓	✓	✓	✓
37	✓	✓	✓	✓	✓
38	✓	✓	✓	✓	✓
39	✓	✓	✓	✓	✓
40	✓	✓	✓	✓	✓
41	✓	✓	✓	✓	✓
42	✓	✓	✓	✓	✓
43	✓	✓	✓	✓	✓
44	✓	✓	✓	✓	✓
45	✓	✓	✓	✓	✓
46	✓	✓	✓	✓	✓
47	✓	✓	✓	✓	✓
48	✓	✓	✓	✓	✓
49	✓	✓	✓	✓	✓
50	✓	✓	✓	✓	✓
51	✓	✓	✓	✓	✓
52	✓	✓	✓	✓	✓
53	✓	✓	✓	✓	✓
54	✓	✓	✓	✓	✓
55	✓	✓	✓	✓	✓
56	✓	✓	✓	✓	✓
57	✓	✓	✓	✓	✓
58	✓	✓	✓	✓	✓
59	✓	✓	✓	✓	✓
60	✓	✓	✓	✓	✓
61	✓	✓	✓	✓	✓
62	✓	✓	✓	✓	✓
63	✓	✓	✓	✓	✓
64	✓	✓	✓	✓	✓
65	✓	✓	✓	✓	✓
66	✓	✓	✓	✓	✓
67	✓	✓	✓	✓	✓
68	✓	✓	✓	✓	✓
69	✓	✓	✓	✓	✓
70	✓	✓	✓	✓	✓
71	✓	✓	✓	✓	✓
72	✓	✓	✓	✓	✓
73	✓	✓	✓	✓	✓
74	✓	✓	✓	✓	✓
75	✓	✓	✓	✓	✓
76	✓	✓	✓	✓	✓
77	✓	✓	✓	✓	✓
78	✓	✓	✓	✓	✓
79	✓	✓	✓	✓	✓
80	✓	✓	✓	✓	✓
81	✓	✓	✓	✓	✓
82	✓	✓	✓	✓	✓
83	✓	✓	✓	✓	✓
84	✓	✓	✓	✓	✓
85	✓	✓	✓	✓	✓
86	✓	✓	✓	✓	✓
87	✓	✓	✓	✓	✓
88	✓	✓	✓	✓	✓
89	✓	✓	✓	✓	✓
90	✓	✓	✓	✓	✓
91	✓	✓	✓	✓	✓
92	✓	✓	✓	✓	✓
93	✓	✓	✓	✓	✓
94	✓	✓	✓	✓	✓
95	✓	✓	✓	✓	✓
96	✓	✓	✓	✓	✓
97	✓	✓	✓	✓	✓
98	✓	✓	✓	✓	✓
99	✓	✓	✓	✓	✓
100	✓	✓	✓	✓	✓

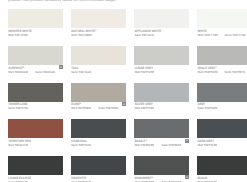
Dulux World of Colour Powder Coat Series Australian Collection

Dulux

Premium Architectural Colour Selector

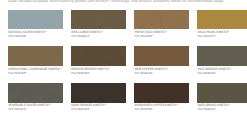
DURATEC 100% POLYURETHANE POWDER COAT SYSTEM

100% POLYURETHANE POWDER COAT SYSTEM



ELECTRO 100% POLYURETHANE POWDER COAT SYSTEM

100% POLYURETHANE POWDER COAT SYSTEM



FLUOROSET 100% POLYURETHANE POWDER COAT SYSTEM

100% POLYURETHANE POWDER COAT SYSTEM



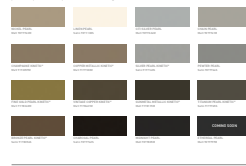
ALLURE PEARLESCENT RANGE

PEARLESCENT RANGE



DURATEC 100% POLYURETHANE POWDER COAT SYSTEM

100% POLYURETHANE POWDER COAT SYSTEM



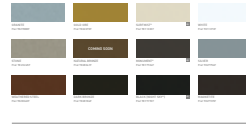
CHARISMA 100% POLYURETHANE POWDER COAT SYSTEM

100% POLYURETHANE POWDER COAT SYSTEM



DURATEC 100% POLYURETHANE POWDER COAT SYSTEM

100% POLYURETHANE POWDER COAT SYSTEM



DURATEC 100% POLYURETHANE POWDER COAT SYSTEM

100% POLYURETHANE POWDER COAT SYSTEM





We've Got It Covered



V1124



Blue Chip Group Pty Ltd

SYDNEY | MELBOURNE | BRISBANE | PERTH | ADELAIDE

P 1300 945 123

E sales@bluechipgroup.net.au

www.bluechipgroup.net.au

DISCLAIMER No information or advice contained in this publication is binding in any way shape or form and is provided on a without prejudice basis. All photographs and colour swatches are indicative only. All dimensions are nominal and all product data and specifications are subject to change without notice. All pricing, sales, communications and transactions are subject to Blue Chip Group's terms of trading which are available on request.