



BLUECHIP

Metal Cladding

ULTRALIGN

Cladding Brochure

www.bluechipgroup.net.au



ULTRALIGN

Extruded Aluminium Cladding

Description

ULTRALIGN intelligent aluminium facade system is available in a range of solid aluminium profiles providing a reliable and attractive modern facade alternative to other commercial cladding products. ULTRALIGN products have been specifically designed by experienced commercial facade professionals to meet the demands of today's facade industry. Australian made using the finest raw materials and finish options, ULTRALIGN offers an unprecedented level of quality, reliability, and longevity with an extensive range of colours, textures, and finish options, available in both standard and custom sizes.

Product Benefits



AS 1530.1 NON-COMBUSTIBLE

ULTRALIGN products are made of 100% solid aluminium which is totally non-combustible to AS 1530.1. Architects, engineers, and tenants can be assured ULTRALIGN will not burn or contribute to fire spread.



ENVIRONMENTALLY SUSTAINABLE

ULTRALIGN solid aluminium is a 100% recyclable product. Energy, emissions, wastage and materials are saved in every aspects of the product from manufacturing, to, delivery, installation and recycling.



INTELLIGENT INSTALLATION

The ULTRALIGN profile has been intelligently designed to provide excellent usability such as multi-angle mating and it has double swarf-free contact points for superior consistency and weatherproofing.



MINIMAL FABRICATION

ULTRALIGN panels can be ordered to custom lengths which eliminates additional fabrication. Panels are simply interlocked and tightened, then fixed. This also optimises usability and decreases waste.



PREFINISHED SYSTEM

The entire ULTRALIGN range is pre-finished. This means there is no requirement for painting or onsite finishing. Our finish options are both attractive and durable to maintain a protective coating over time.



INCREDIBLE AESTHETICS

ULTRALIGN profiles all have their own unique look with classic shadow lines, sharp step features or bold standing seams. Add in the choice of any anodised or powdercoat finish and the options are limitless.



100% AUSTRALIAN MADE

ULTRALIGN is a 100% Australian owned, designed and made product, which contributes to its outstanding quality and fast lead times. Using ULTRALIGN aids all aspects of the Australian economy.



COMPLETE SYSTEM




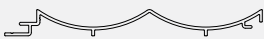


ULTRALIGN is supplied with a complete range of matching trims called CLADTRIM. These cater for all common details and junction types such as starter strip, cover strip, edge trim and corner profiles.

INSTALL & TECHNICAL

For installation and technical information, scan the QR code and view 'Downloads' tab.



Profiles

	Spec. Code: ULG15518 ULTRALIGN 155 x 18 Groove Profile
	Spec. Code: ULW15525 ULTRALIGN 155 x 25 Weatherboard Profile
	Spec. Code: ULF15518 ULTRALIGN 155 x 18 Fluted Profile
	Spec. Code: ULD15518 ULTRALIGN 155 x 18 Duoflute Profile
	Spec. Code: ULS20548 ULTRALIGN 205 x 48 Seam Profile
	Spec. Code: ULC15024 ULTRALIGN 150 x 24 Castellated Profile

Availability

CODE	DESCRIPTION	LEAD TIME	MOQ
UL*G15518	ULTRALIGN 155 x 18mm Groove (Insert Colour), 6.5m Length	4-5 Weeks	1 Length
UL*C15525	ULTRALIGN 155 x 25mm Cabin (Insert Colour), 6.5m Length	8-10 Weeks	50 Lengths
UL*F15518	ULTRALIGN 155 x 18mm Flute (Insert Colour), 6.5m Length	8-10 Weeks	50 Lengths
UL*D15518	ULTRALIGN 155 x 18mm Duoflute (Insert Colour), 6.5m Length	8-10 Weeks	50 Lengths
UL*S20548	ULTRALIGN 205 x 48mm Seam (Insert Colour), 6.5m Length	8-10 Weeks	50 Lengths
ULC15024	ULTRALIGN 150 x 24mm Castellated (Insert Colour), 5.0m Length	8-10 Weeks	50 Lengths

Colour-Matched Trims

CODE	DESCRIPTION	LEAD TIME	MOQ
CT*SS	CLADTRIM J-shape Starter Strip (Insert Colour), 5.5m Length	2-3 Weeks	1 Length
CT*ZPET	CLADTRIM Z-shape Joint Profile (Insert Colour), 5.5m Length	2-3 Weeks	1 Length
CT*CP	CLADTRIM 40mm 2-piece Corner (Insert Colour), 5.5m Length	2-3 Weeks	1 Length
CT*CS	CLADTRIM 40mm 2-piece Cover Strip (Insert Colour), 5.5m Length	2-3 Weeks	1 Length
CT*ZPET	CLADTRIM 40mm 2-piece Edge Trim (Insert Colour), 5.5m Length	2-3 Weeks	1 Length
CT*XXXX	CLADTRIM 50/40/20mm Angle (Insert Colour), 6.5m Length	2-3 Weeks	1 Length

System Components

				
Facade System	AS 1530.1 Insulation	Class 4 Membrane	Steel Top-hats	Joint Sealant

ULTRALIGN

Colour Chart

Anodised Earth Colours (Matt Finish)



UL1615 Paraburdoo UL0825 Hamersley UL1109 Karijini UL0318 Chichester

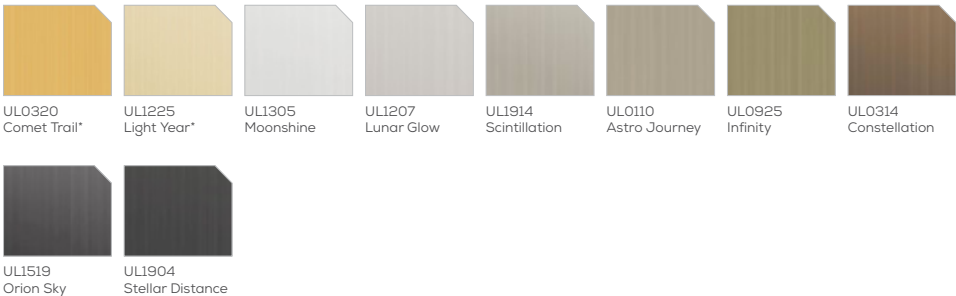
Anodised Earth Colours (Satin Finish)



UL1313 Millstream UL1318 Marble Bar UL0705 Gascoyne UL1825 Roxby



Anodised Space Colours



Material Colours



*Gold anodised colours: UL0320 Comet Trail and UL1225 Light Year will not be consistent and will have significant variation of colour and tone both between different lengths and within a single length.



ULTRALIGN

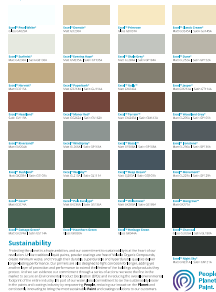
Colour Chart

Powdercoat Colours – visit interpon.com/au/en



Exterior Durable Color Range

Interpon Durable Exterior Color Range



Interpon Living Series

Interpon Living Series Color Range



Sustainability
Interpon is committed to sustainable practices and has achieved ISO 14001 certification. Our products are made from 100% recycled materials and are free of heavy metals and volatile organic compounds (VOCs). For more information, visit interpon.com/au/en/sustainability.



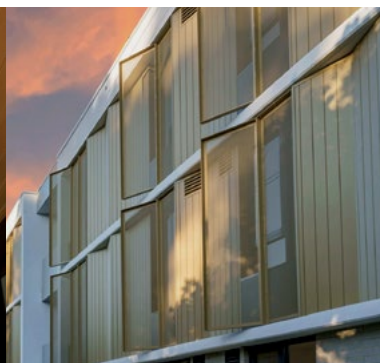
Interpon D2525



Interpon D2525 Flat Matt



Interpon D2525 Color Vitality

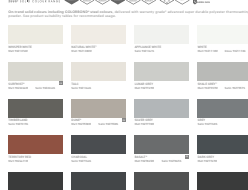


Powdercoat Colours – visit duluxpowders.com.au

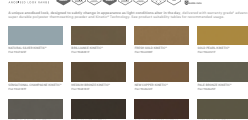


Premium Architectural Colour Selector

DURATEC



ELECTRO



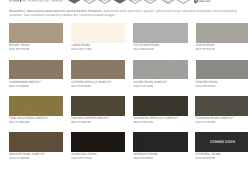
FLUOROSET



ALLURE



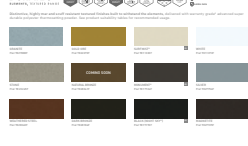
DURATEC



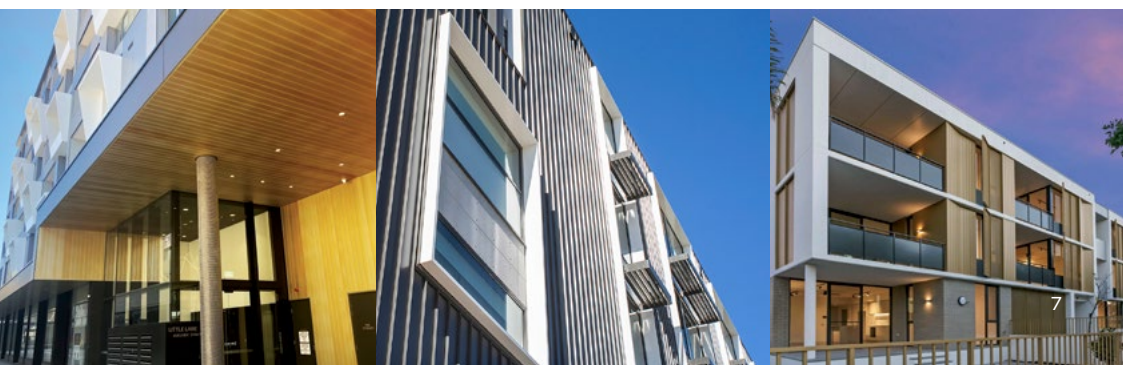
CHARISMA



DURATEC



DURATEC





We've Got It Covered



V0525



Blue Chip Group Pty Ltd

SYDNEY | MELBOURNE | BRISBANE | PERTH | ADELAIDE

P 1300 945 123

E sales@bluechipgroup.net.au

www.bluechipgroup.net.au

DISCLAIMER No information or advice contained in this publication is binding in any way shape or form and is provided on a without prejudice basis. All photographs and colour swatches are indicative only. All dimensions are nominal and all product data and specifications are subject to change without notice. All pricing, sales, communications and transactions are subject to Blue Chip Group's terms of trading which are available on request.