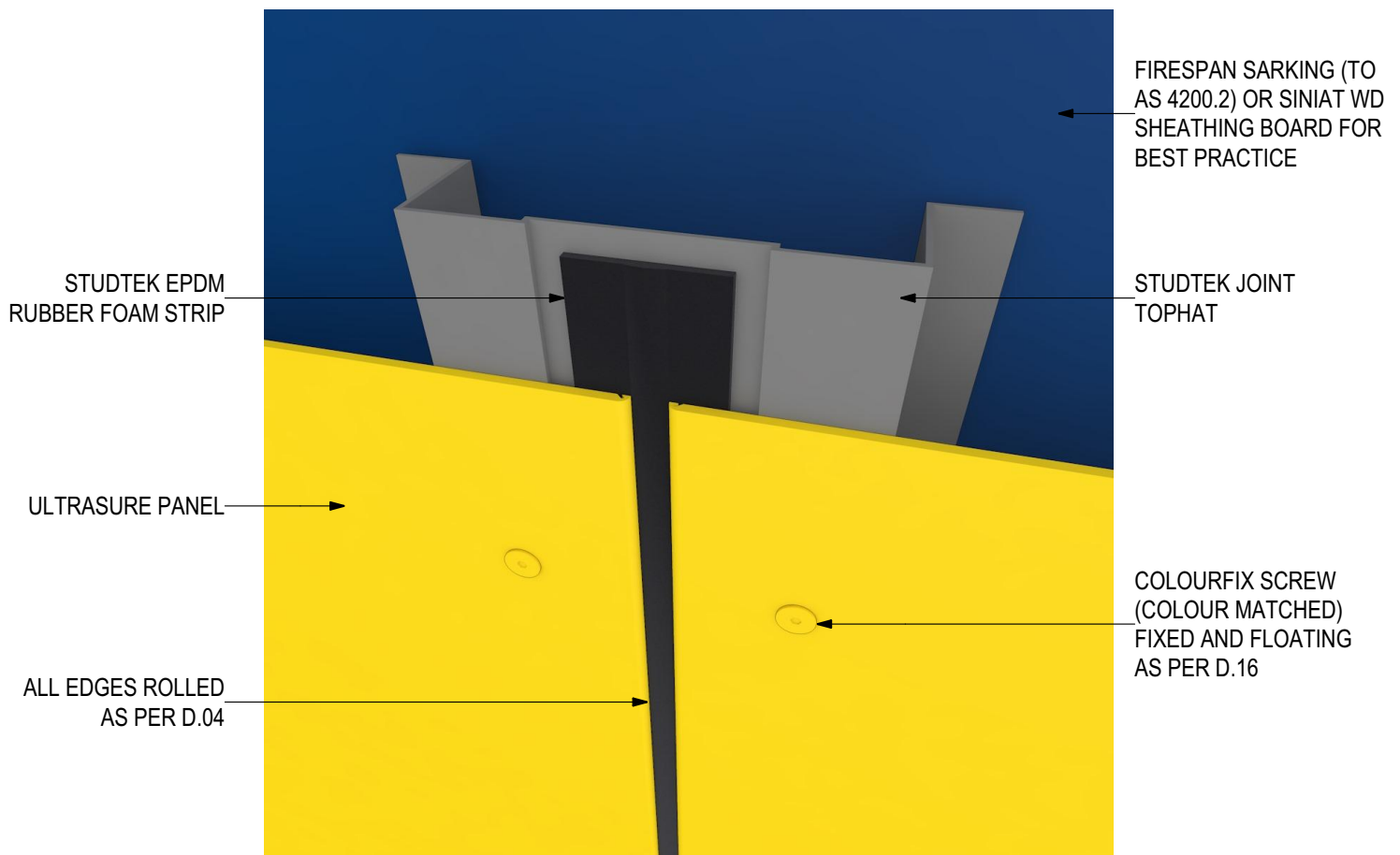


# ULTRASURE Pre-finished Solid Aluminium Panel (V0920) US-03-VSF Visible Screw Fix

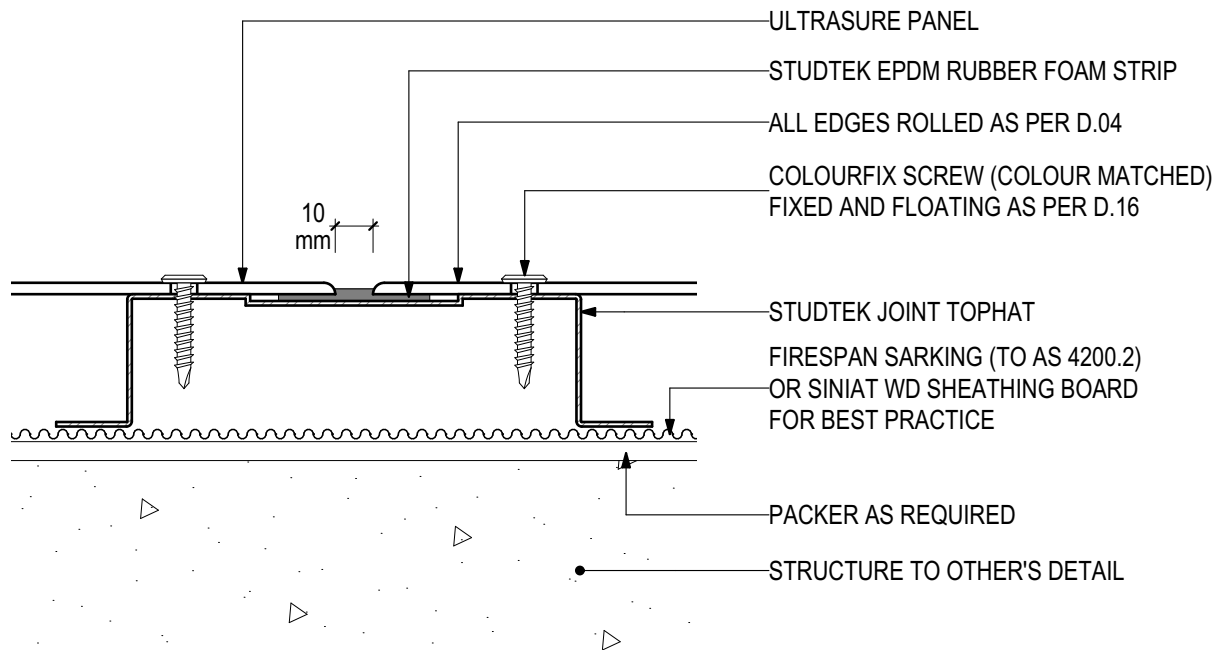


## INSTALLATION DETAILS

Disclaimer: These details are general design details for use as a guide. Any use is at the user's own discretion and risk. All detailing and installation should be in accordance with all the relevant codes and standards as per current NCC requirements.

**Blue Chip Group Pty Ltd**  
1300 945 123  
sales@bluechipgroup.net.au  
www.bluechipgroup.net.au

# ULTRASURE Pre-finished Solid Aluminium Panel (V0920) US-03-VSF Visible Screw Fix



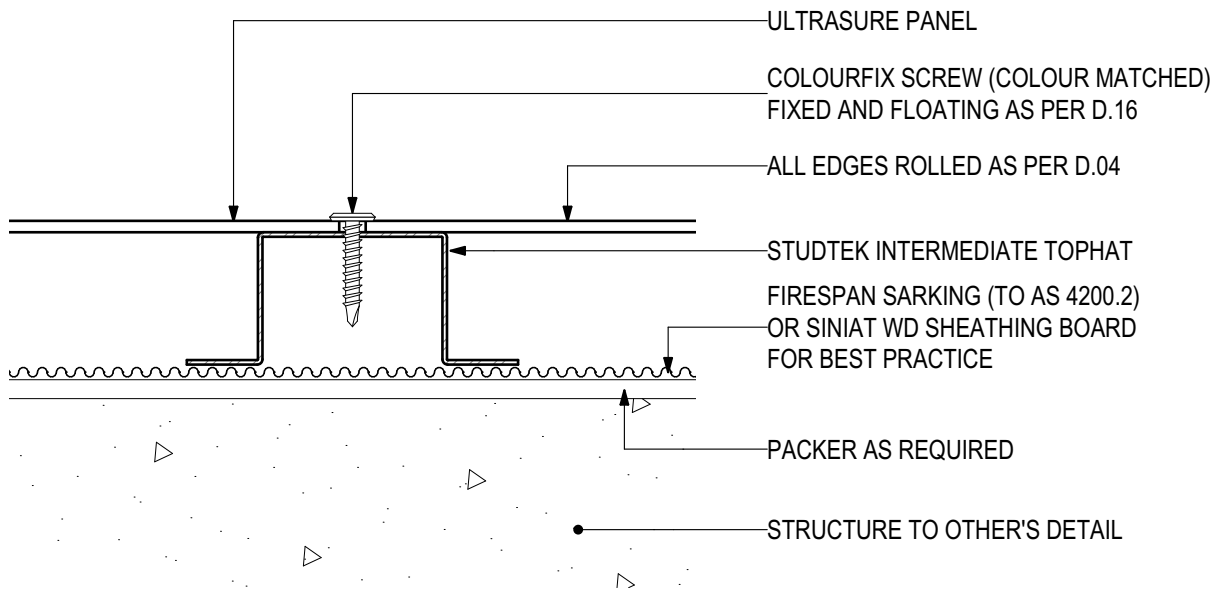
## D.01 - TYPICAL FIXING DETAIL

SCALE 1:2

Disclaimer: These details are general design details for use as a guide. Any use is at the user's own discretion and risk. All detailing and installation should be in accordance with all the relevant codes and standards as per current NCC requirements.

**Blue Chip Group Pty Ltd**  
1300 945 123  
sales@bluechipgroup.net.au  
www.bluechipgroup.net.au

# ULTRASURE Pre-finished Solid Aluminium Panel (V0920) US-03-VSF Visible Screw Fix



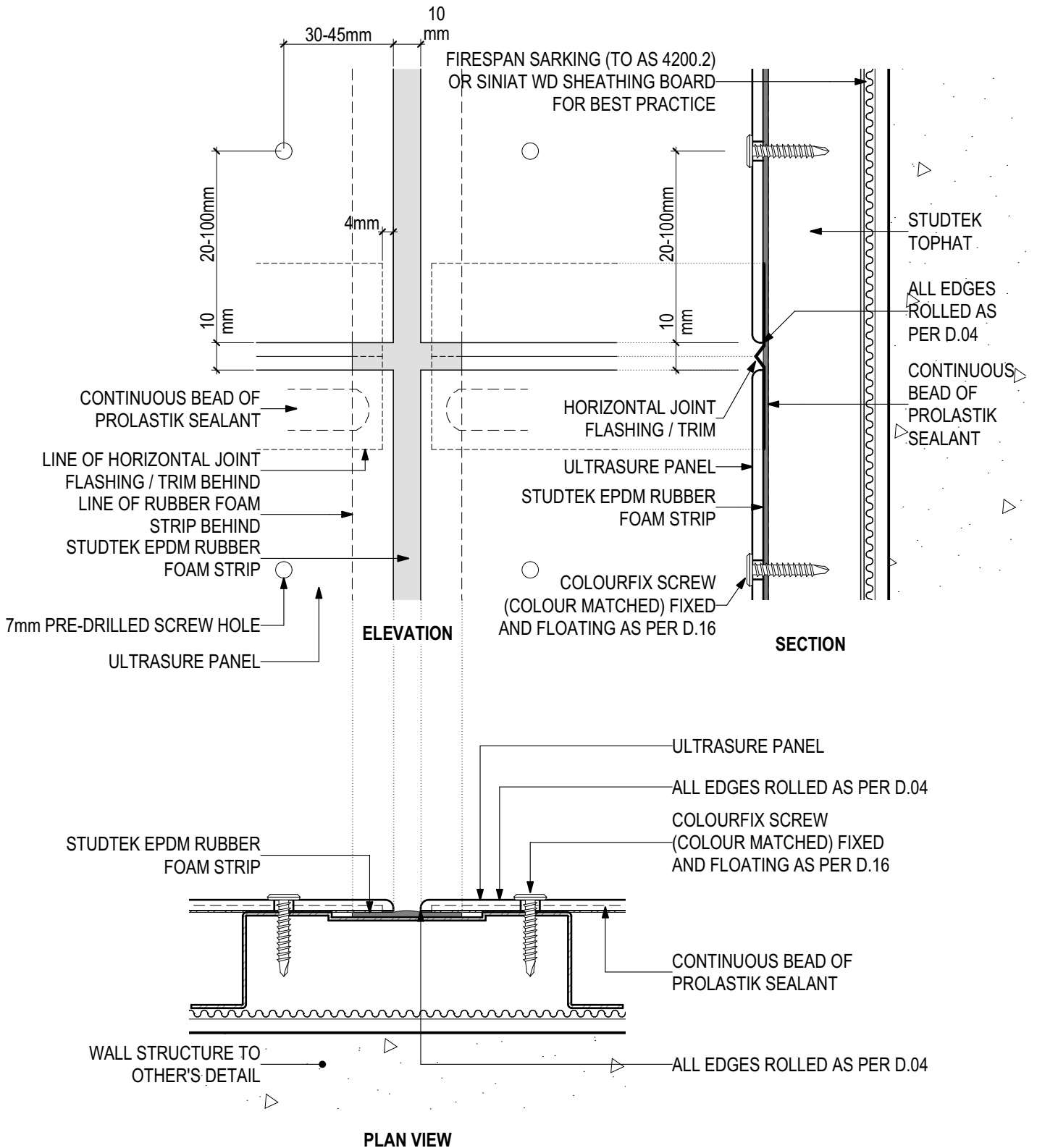
## D.02 - INTERMEDIATE DETAIL

SCALE 1:2

Disclaimer: These details are general design details for use as a guide. Any use is at the user's own discretion and risk. All detailing and installation should be in accordance with all the relevant codes and standards as per current NCC requirements.

**Blue Chip Group Pty Ltd**  
1300 945 123  
sales@bluechipgroup.net.au  
www.bluechipgroup.net.au

# ULTRASURE Pre-finished Solid Aluminium Panel (V0920) US-03-VSF Visible Screw Fix



## D.03 - EXPRESSED JOINT DETAIL

SCALE 1:2

Disclaimer: These details are general design details for use as a guide. Any use is at the user's own discretion and risk. All detailing and installation should be in accordance with all the relevant codes and standards as per current NCC requirements.

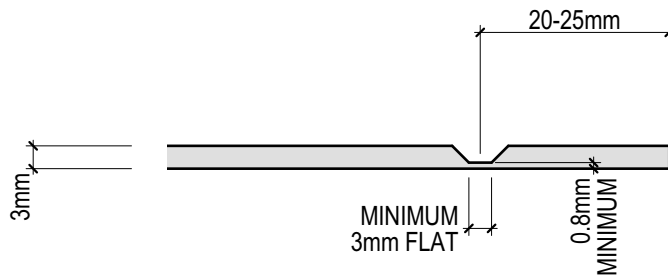
**Blue Chip Group Pty Ltd**  
1300 945 123  
sales@bluechipgroup.net.au  
www.bluechipgroup.net.au

# ULTRASURE Pre-finished Solid Aluminium Panel (V0920) US-03-VSF Visible Screw Fix



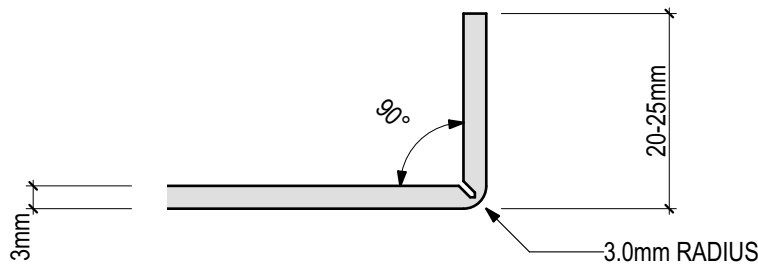
## STEP 1

V-GROOVING ON CNC MACHINE (45° WITH MINIMUM 3.0mm FLAT)



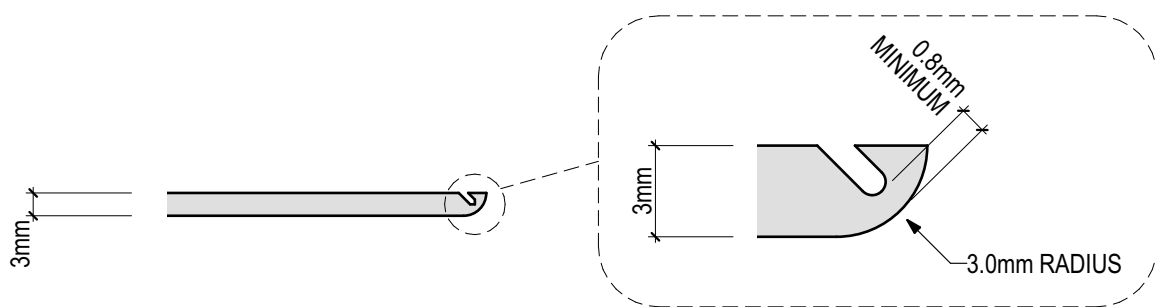
## STEP 2

FOLDING 20-25mm RETURN 90° TO THE PANEL FACE



## STEP 3

CUT OFF RETURN FLUSH WITH BACK SIDE OF PANEL



## STEP 4

REPEAT ABOVE PROCESS FOR ALL PANEL EDGES

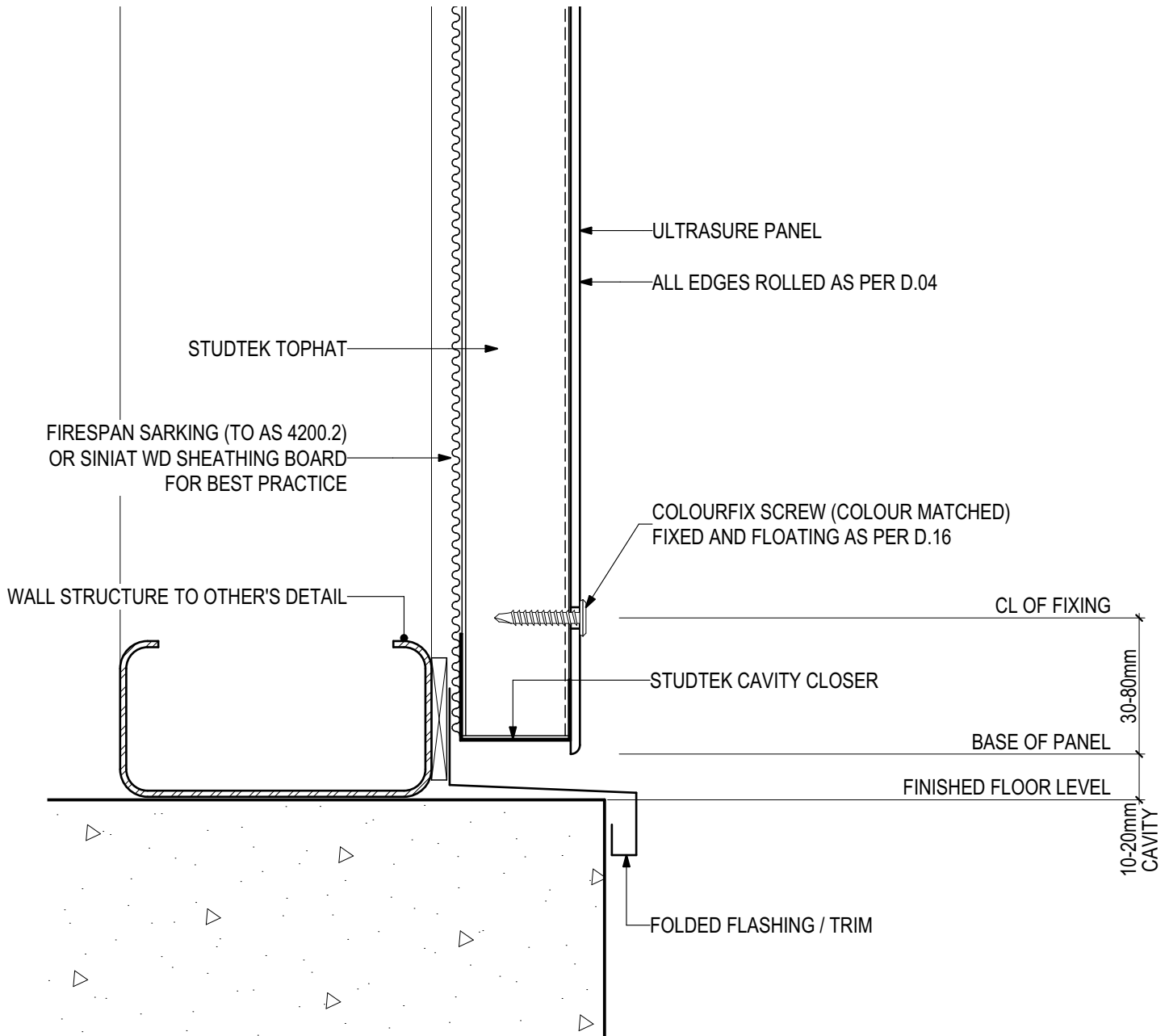
## D.04 - ROLLED EDGE DETAIL

SCALE 1:1

Disclaimer: These details are general design details for use as a guide. Any use is at the user's own discretion and risk. All detailing and installation should be in accordance with all the relevant codes and standards as per current NCC requirements.

**Blue Chip Group Pty Ltd**  
1300 945 123  
sales@bluechipgroup.net.au  
www.bluechipgroup.net.au

**ULTRASURE Pre-finished Solid Aluminium Panel (V0920)**  
**US-03-VSF Visible Screw Fix**



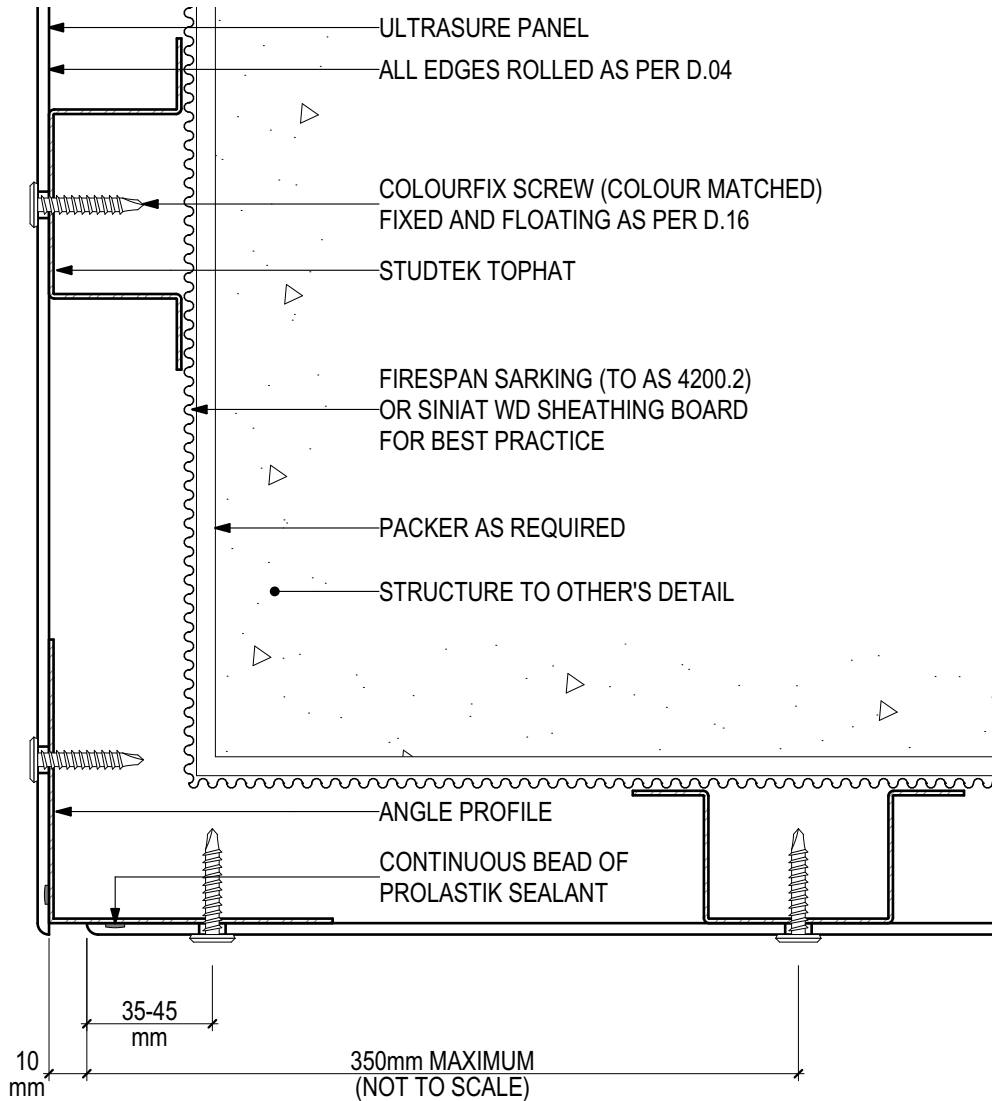
**D.05 - BASE DETAIL**

SCALE 1:2

Disclaimer: These details are general design details for use as a guide. Any use is at the user's own discretion and risk. All detailing and installation should be in accordance with all the relevant codes and standards as per current NCC requirements.

**Blue Chip Group Pty Ltd**  
 1300 945 123  
 sales@bluechipgroup.net.au  
 www.bluechipgroup.net.au

# ULTRASURE Pre-finished Solid Aluminium Panel (V0920) US-03-VSF Visible Screw Fix



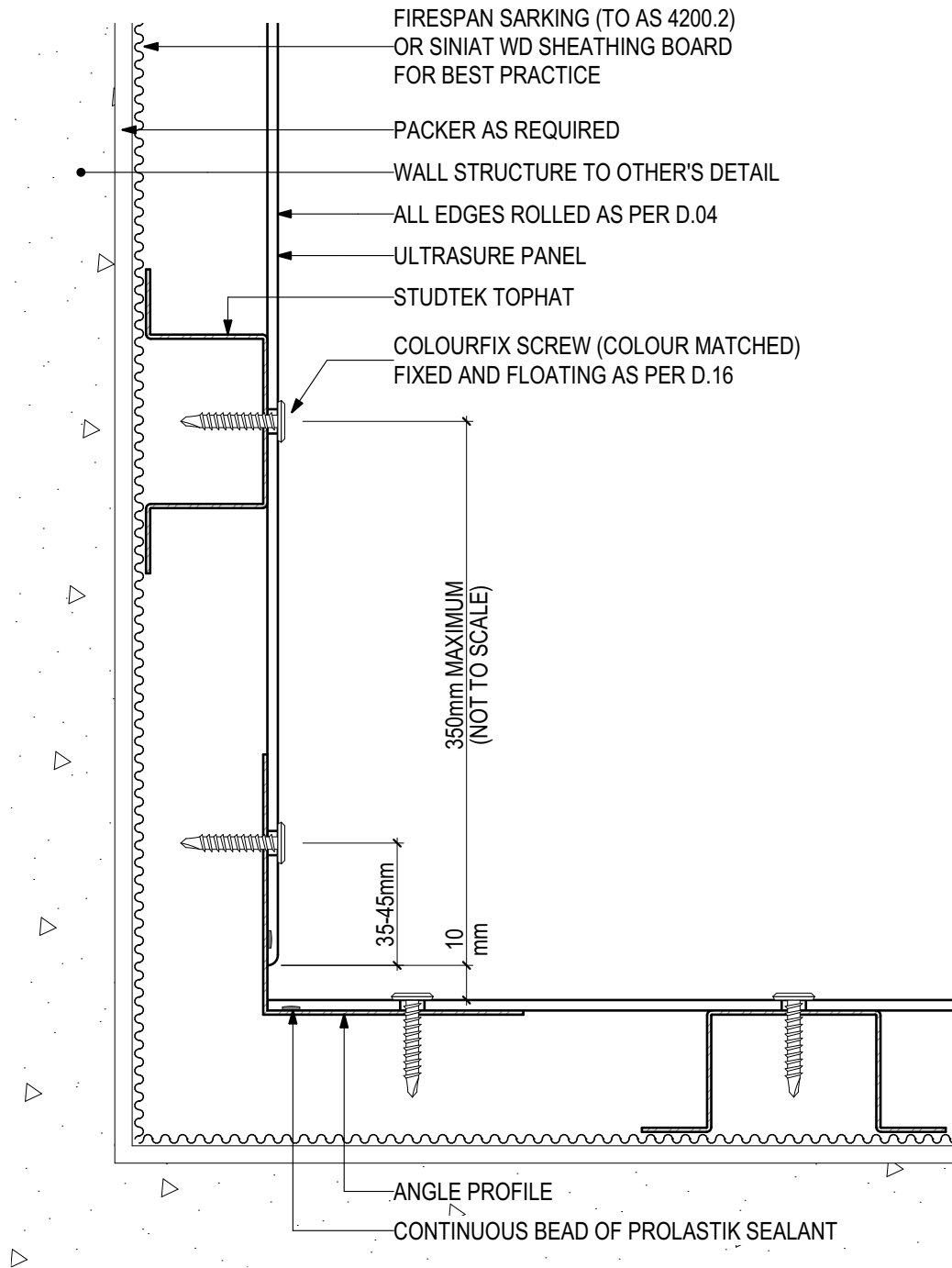
## D.06 - EXTERNAL CORNER

SCALE 1:2

Disclaimer: These details are general design details for use as a guide. Any use is at the user's own discretion and risk. All detailing and installation should be in accordance with all the relevant codes and standards as per current NCC requirements.

**Blue Chip Group Pty Ltd**  
1300 945 123  
sales@bluechipgroup.net.au  
www.bluechipgroup.net.au

# ULTRASURE Pre-finished Solid Aluminium Panel (V0920) US-03-VSF Visible Screw Fix



## D.07 - INTERNAL CORNER

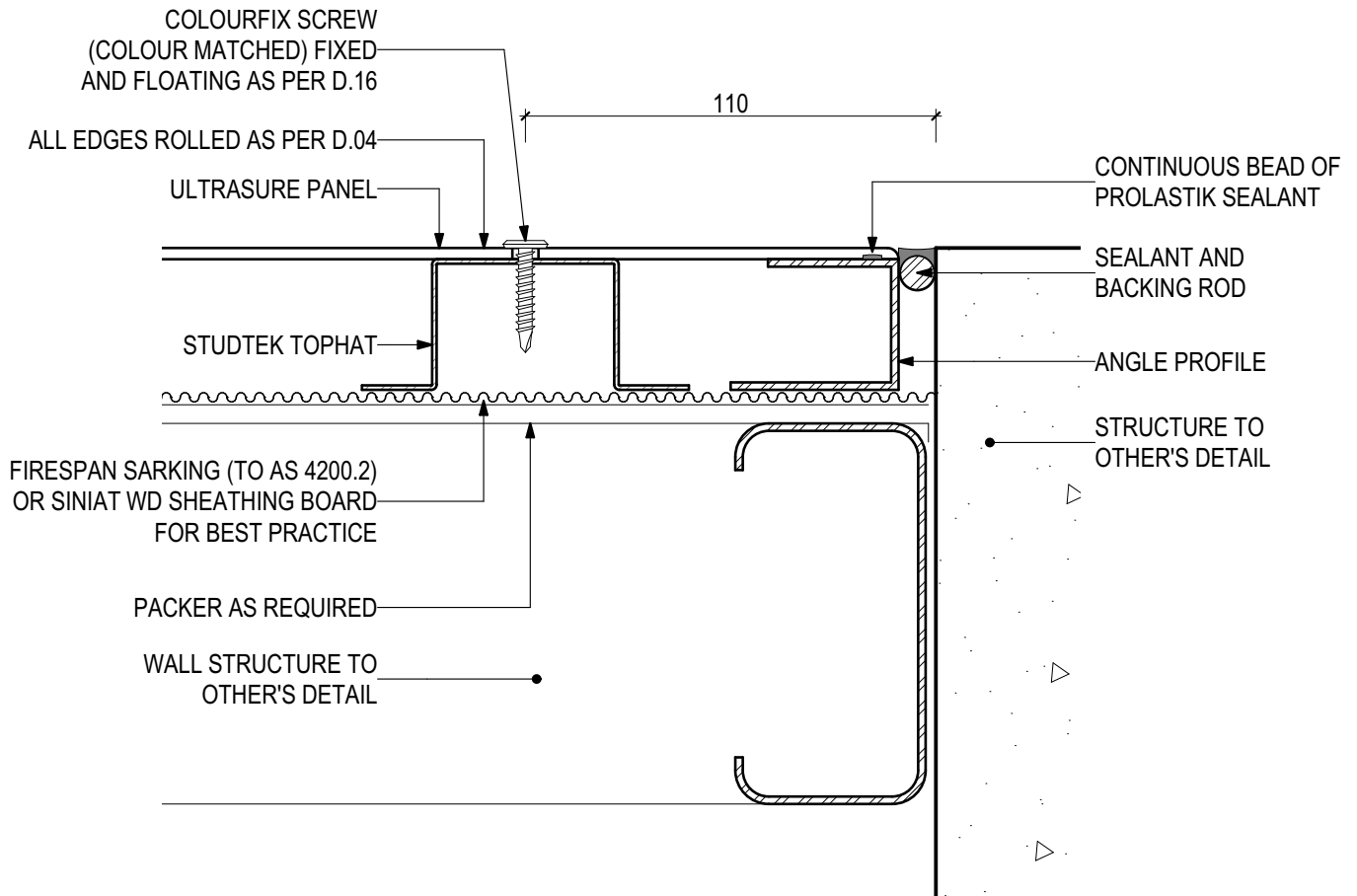
SCALE 1:2

Disclaimer: These details are general design details for use as a guide. Any use is at the user's own discretion and risk. All detailing and installation should be in accordance with all the relevant codes and standards as per current NCC requirements.

**Blue Chip Group Pty Ltd**  
 1300 945 123  
 sales@bluechipgroup.net.au  
 www.bluechipgroup.net.au



**ULTRASURE Pre-finished Solid Aluminium Panel (V0920)  
US-03-VSF Visible Screw Fix**



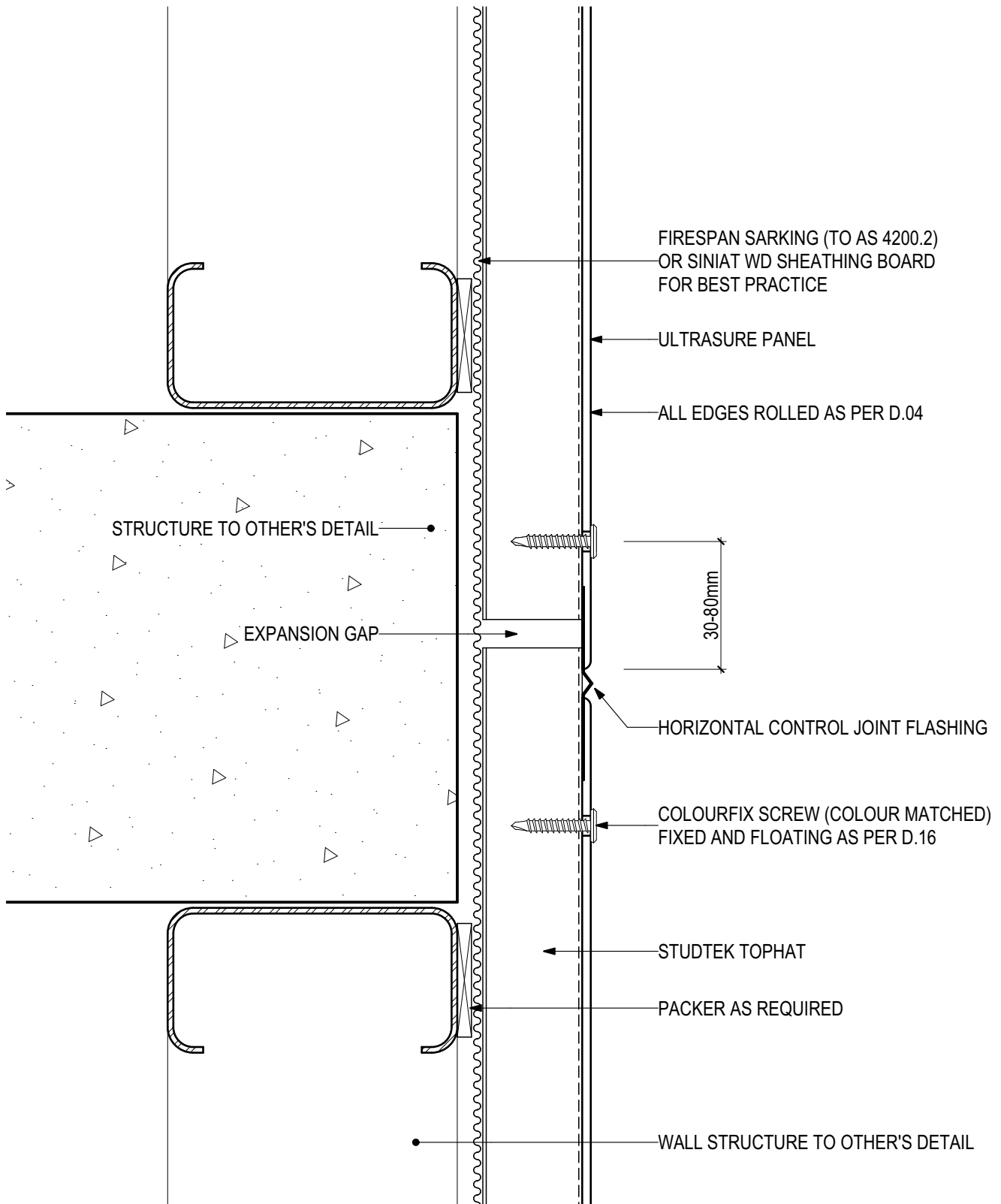
**D.08 - WALL ABUTMENT**

SCALE 1:2

Disclaimer: These details are general design details for use as a guide. Any use is at the user's own discretion and risk. All detailing and installation should be in accordance with all the relevant codes and standards as per current NCC requirements.

**Blue Chip Group Pty Ltd**  
1300 945 123  
sales@bluechipgroup.net.au  
www.bluechipgroup.net.au

# ULTRASURE Pre-finished Solid Aluminium Panel (V0920) US-03-VSF Visible Screw Fix



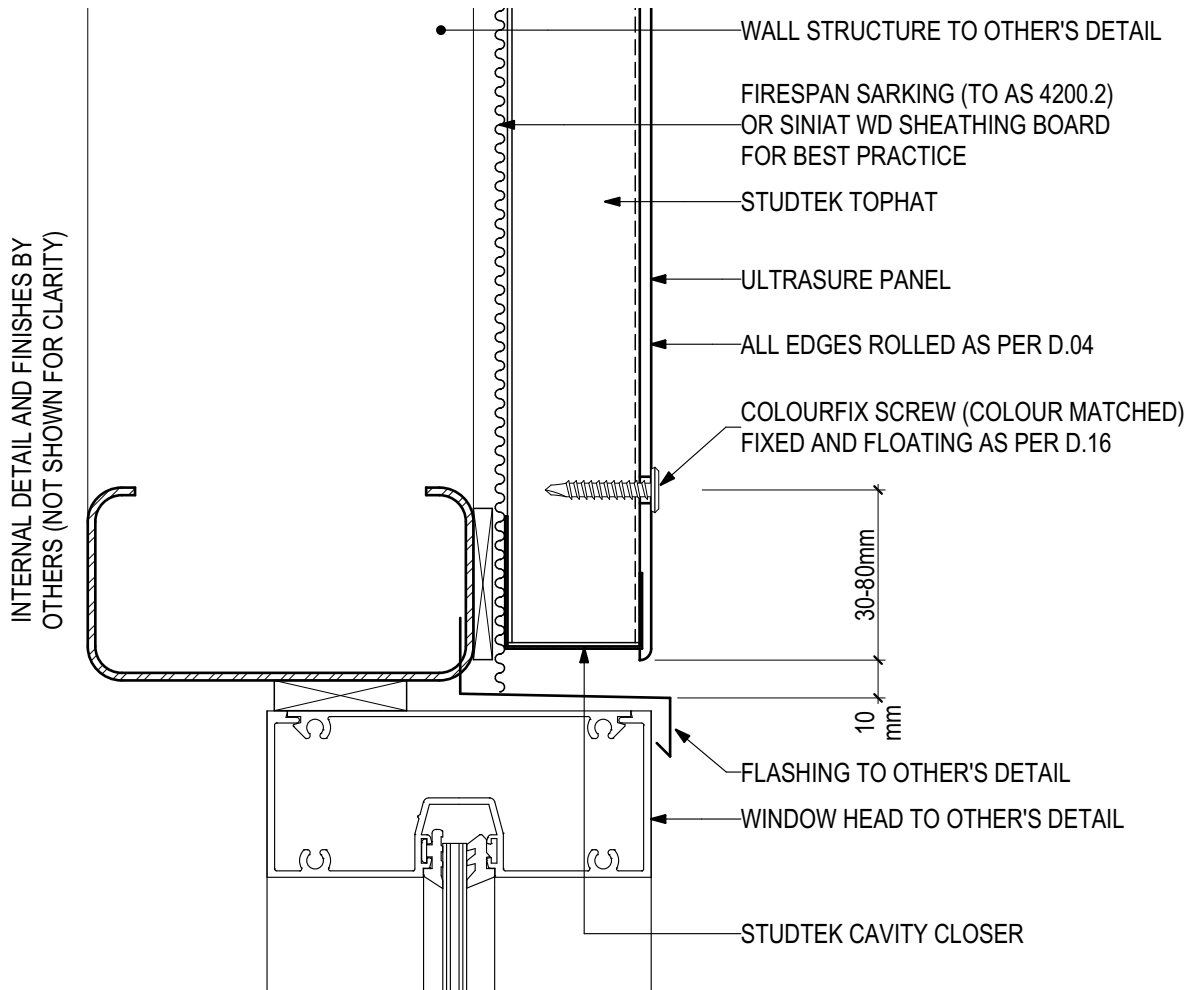
## D.09 - HORIZONTAL CONTROL JOINT

SCALE 1:2

Disclaimer: These details are general design details for use as a guide. Any use is at the user's own discretion and risk. All detailing and installation should be in accordance with all the relevant codes and standards as per current NCC requirements.

**Blue Chip Group Pty Ltd**  
1300 945 123  
sales@bluechipgroup.net.au  
www.bluechipgroup.net.au

# ULTRASURE Pre-finished Solid Aluminium Panel (V0920) US-03-VSF Visible Screw Fix



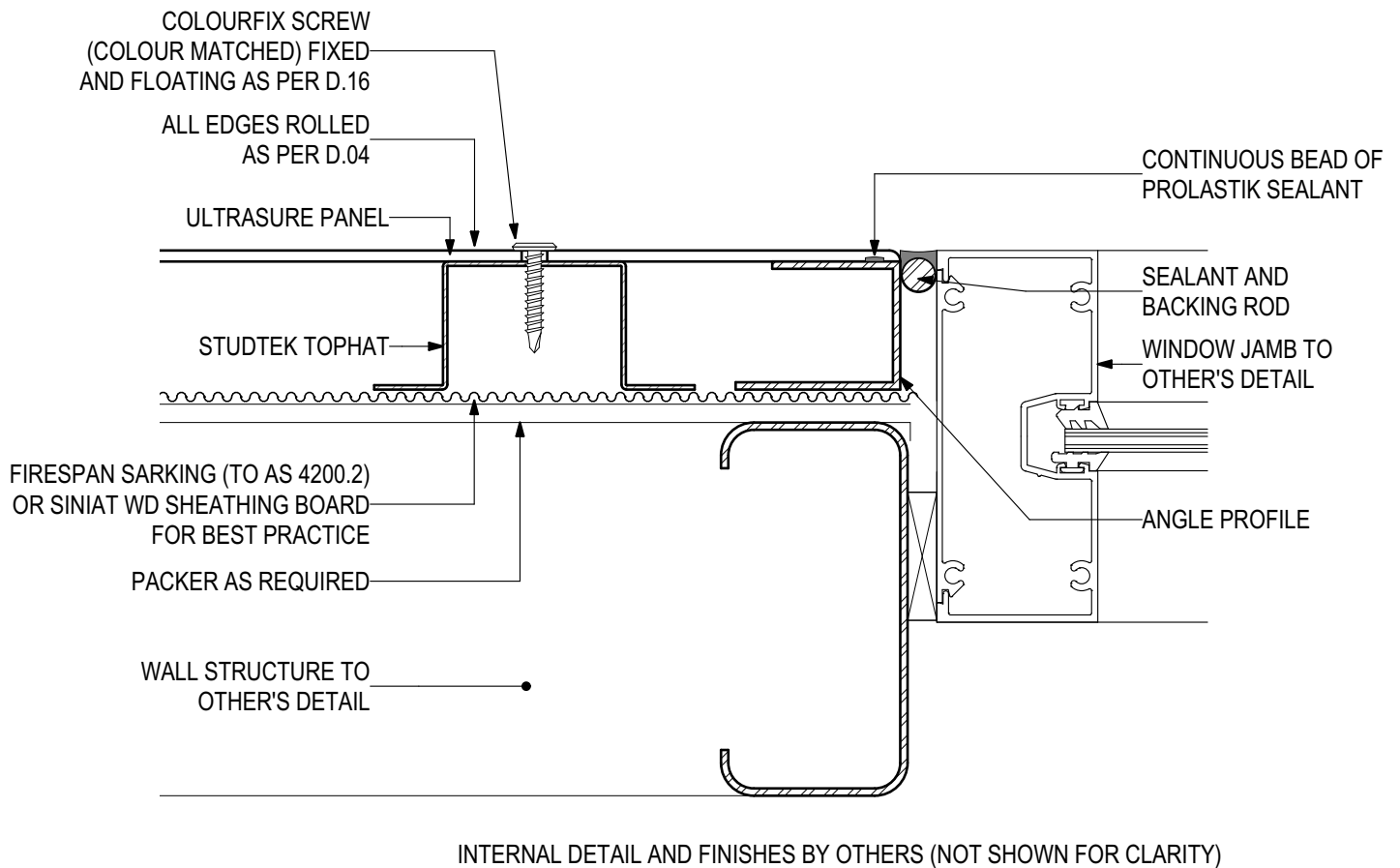
## D.10 - WINDOW HEAD

SCALE 1:2

Disclaimer: These details are general design details for use as a guide. Any use is at the user's own discretion and risk. All detailing and installation should be in accordance with all the relevant codes and standards as per current NCC requirements.

**Blue Chip Group Pty Ltd**  
1300 945 123  
sales@bluechipgroup.net.au  
www.bluechipgroup.net.au

# ULTRASURE Pre-finished Solid Aluminium Panel (V0920) US-03-VSF Visible Screw Fix



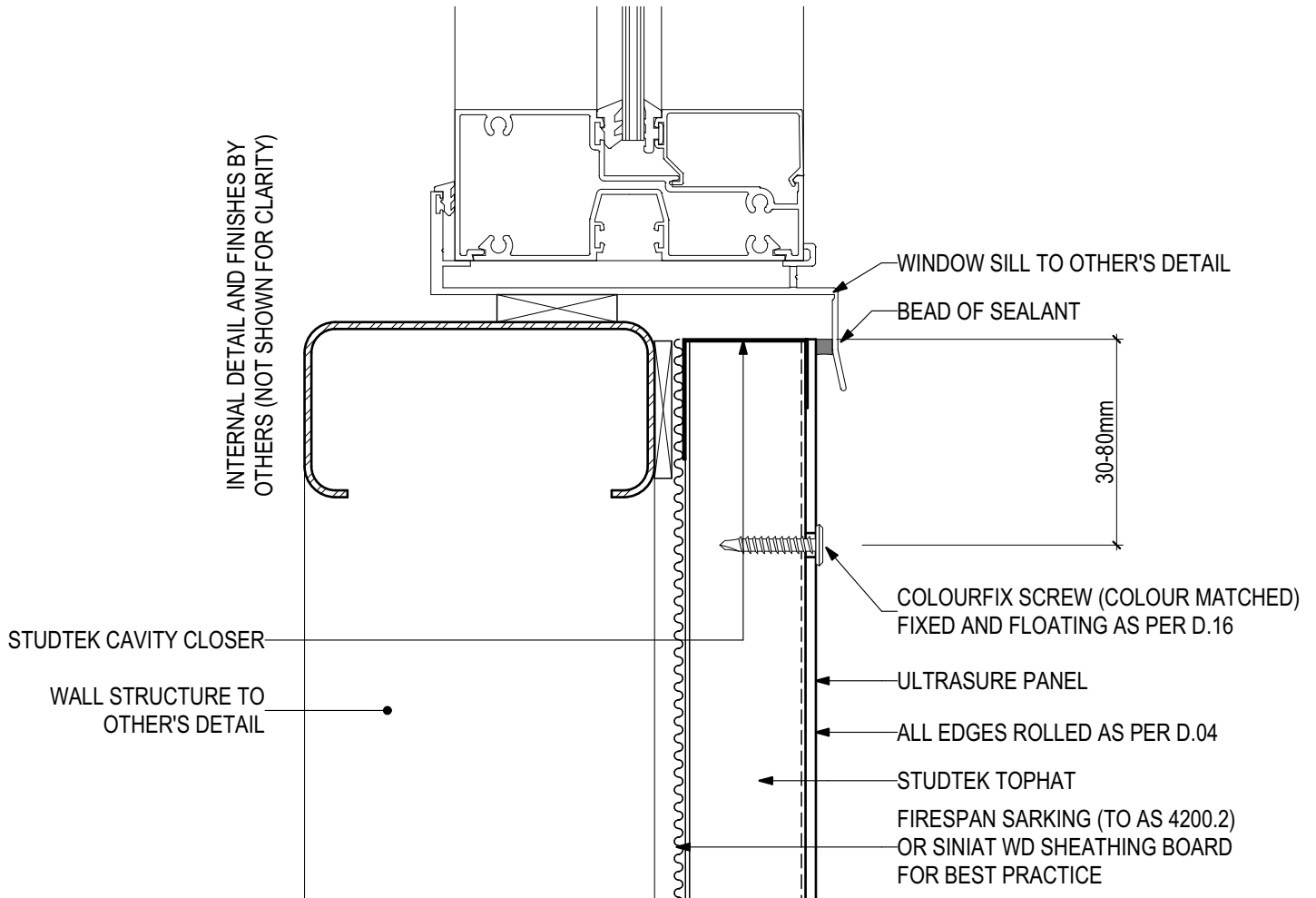
## D.11 - WINDOW JAMB

SCALE 1:2

Disclaimer: These details are general design details for use as a guide. Any use is at the user's own discretion and risk. All detailing and installation should be in accordance with all the relevant codes and standards as per current NCC requirements.

**Blue Chip Group Pty Ltd**  
1300 945 123  
sales@bluechipgroup.net.au  
www.bluechipgroup.net.au

**ULTRASURE Pre-finished Solid Aluminium Panel (V0920)**  
**US-03-VSF Visible Screw Fix**



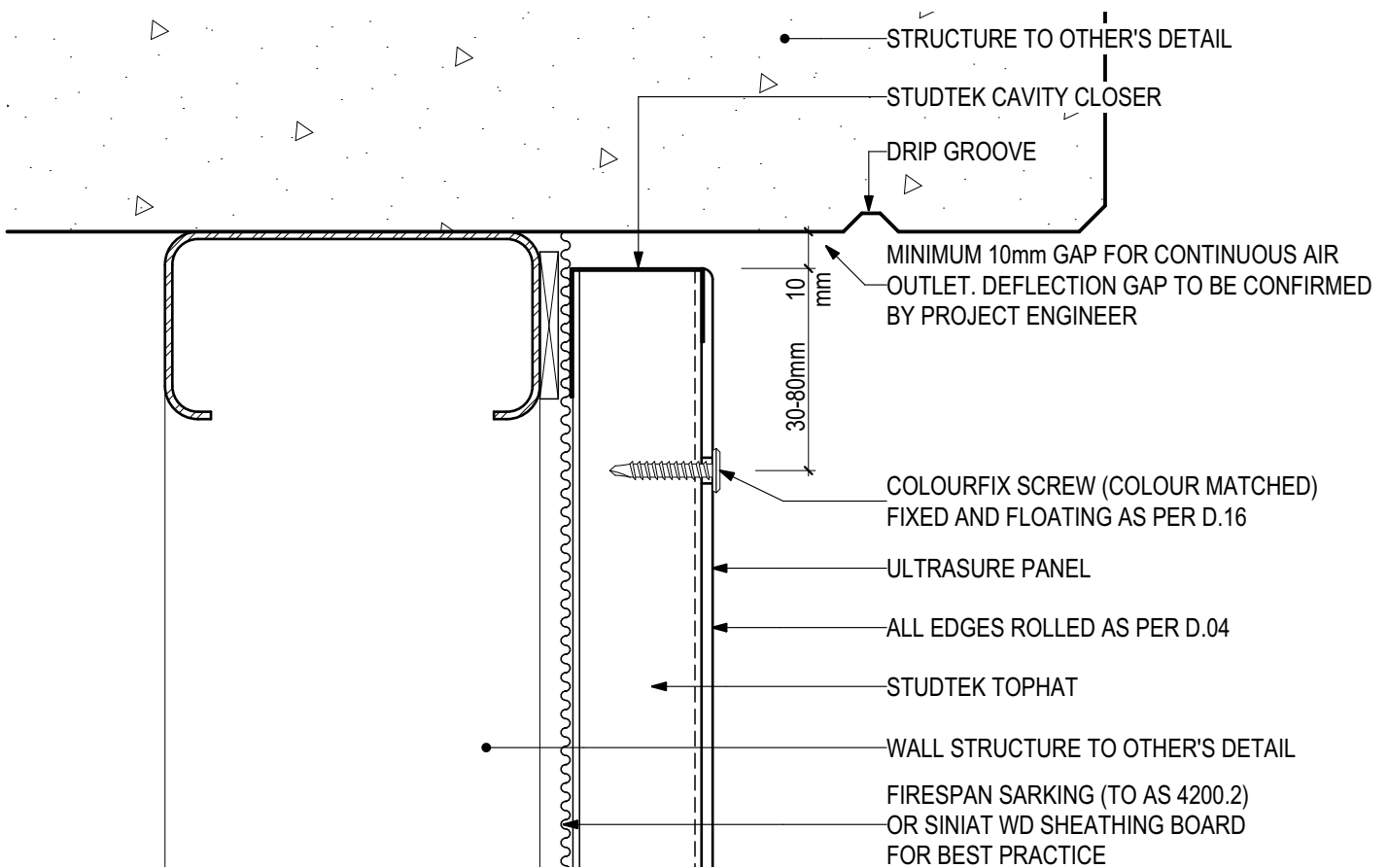
**D.12 - WINDOW SILL**

SCALE 1:2

Disclaimer: These details are general design details for use as a guide. Any use is at the user's own discretion and risk. All detailing and installation should be in accordance with all the relevant codes and standards as per current NCC requirements.

**Blue Chip Group Pty Ltd**  
 1300 945 123  
 sales@bluechipgroup.net.au  
 www.bluechipgroup.net.au

# ULTRASURE Pre-finished Solid Aluminium Panel (V0920) US-03-VSF Visible Screw Fix



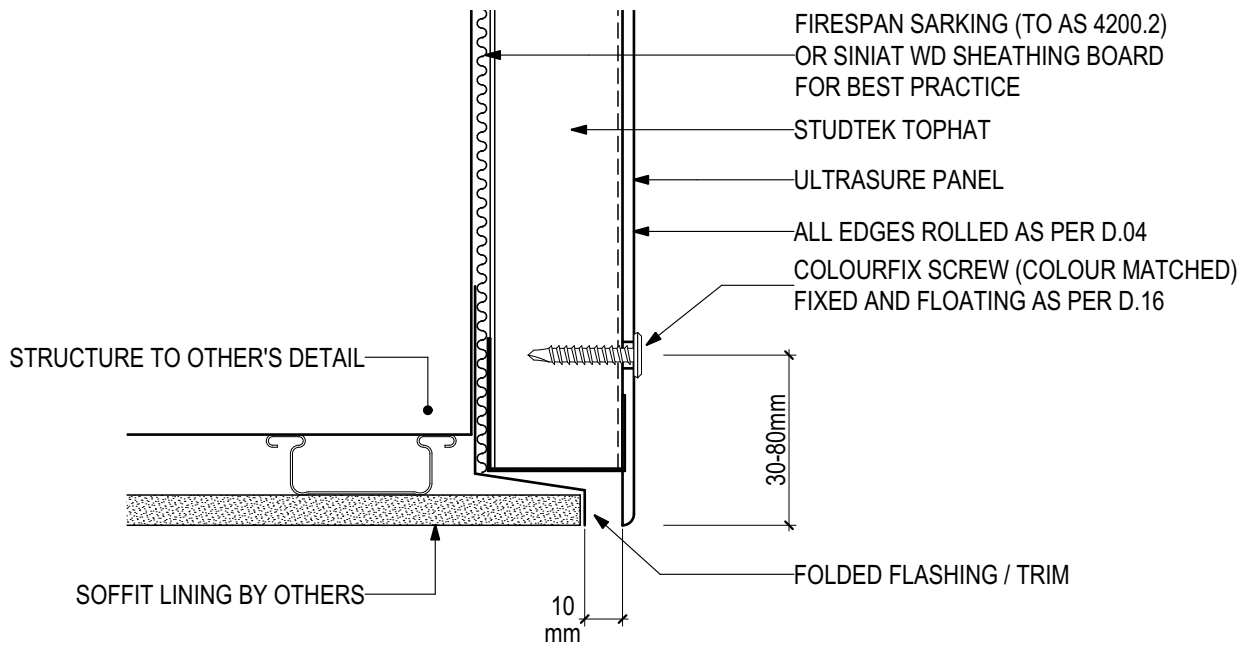
## D.13 - HEAD AT SLAB JUNCTION

SCALE 1:2

Disclaimer: These details are general design details for use as a guide. Any use is at the user's own discretion and risk. All detailing and installation should be in accordance with all the relevant codes and standards as per current NCC requirements.

**Blue Chip Group Pty Ltd**  
1300 945 123  
sales@bluechipgroup.net.au  
www.bluechipgroup.net.au

# ULTRASURE Pre-finished Solid Aluminium Panel (V0920) US-03-VSF Visible Screw Fix



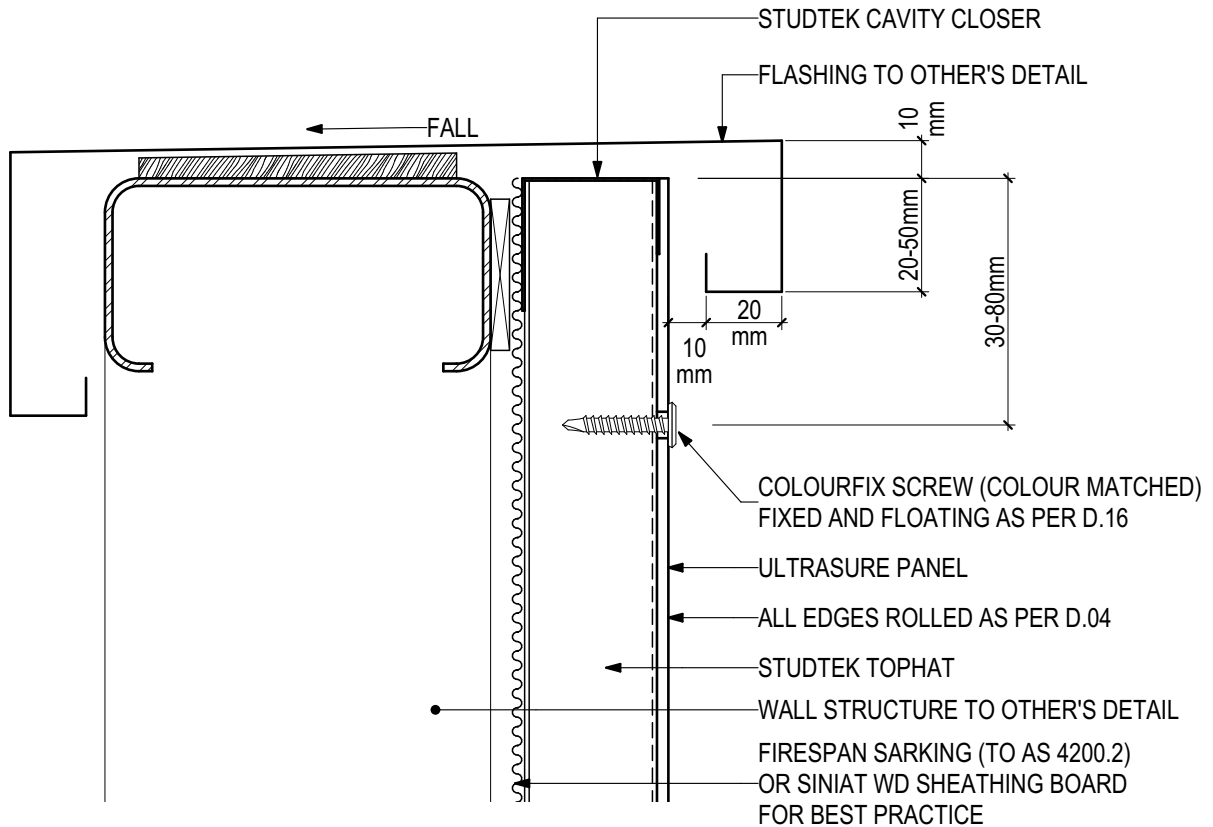
## D.14 - SOFFIT JUNCTION

SCALE 1:2

Disclaimer: These details are general design details for use as a guide. Any use is at the user's own discretion and risk. All detailing and installation should be in accordance with all the relevant codes and standards as per current NCC requirements.

**Blue Chip Group Pty Ltd**  
1300 945 123  
sales@bluechipgroup.net.au  
www.bluechipgroup.net.au

**ULTRASURE Pre-finished Solid Aluminium Panel (V0920)**  
**US-03-VSF Visible Screw Fix**



**D.15 - PARAPET DETAIL**

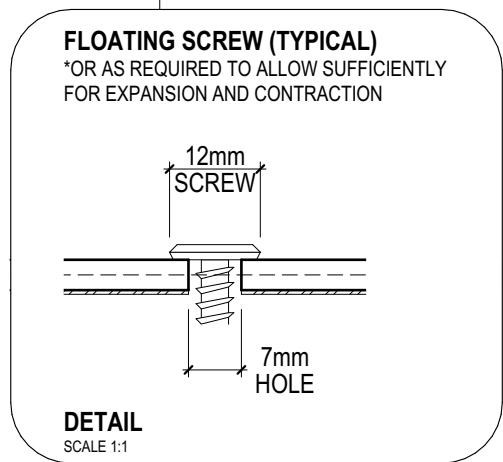
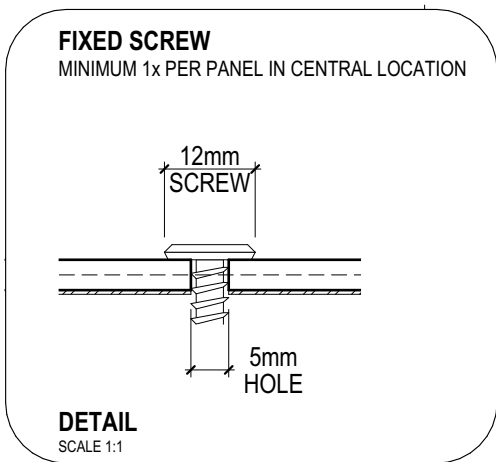
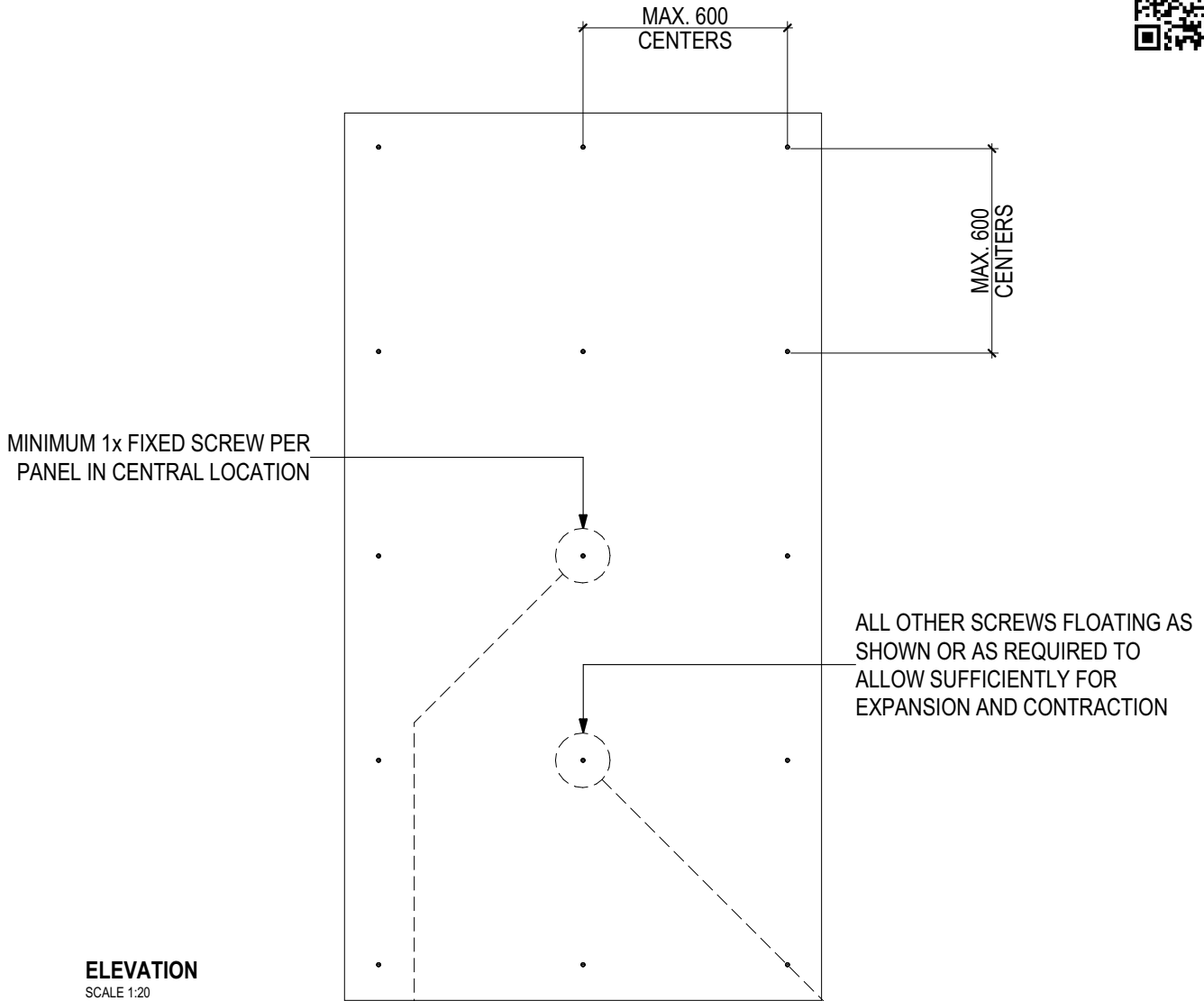
SCALE 1:2

Disclaimer: These details are general design details for use as a guide. Any use is at the user's own discretion and risk. All detailing and installation should be in accordance with all the relevant codes and standards as per current NCC requirements.

**Blue Chip Group Pty Ltd**  
 1300 945 123  
 sales@bluechipgroup.net.au  
 www.bluechipgroup.net.au



# ULTRASURE Pre-finished Solid Aluminium Panel (V0920) US-03-VSF Visible Screw Fix



## D.16 - FIXED AND FLOATING SCREW LAYOUT

SCALE 1:20, 1:1

Disclaimer: These details are general design details for use as a guide. Any use is at the user's own discretion and risk. All detailing and installation should be in accordance with all the relevant codes and standards as per current NCC requirements.

**Blue Chip Group Pty Ltd**  
1300 945 123  
sales@bluechipgroup.net.au  
www.bluechipgroup.net.au