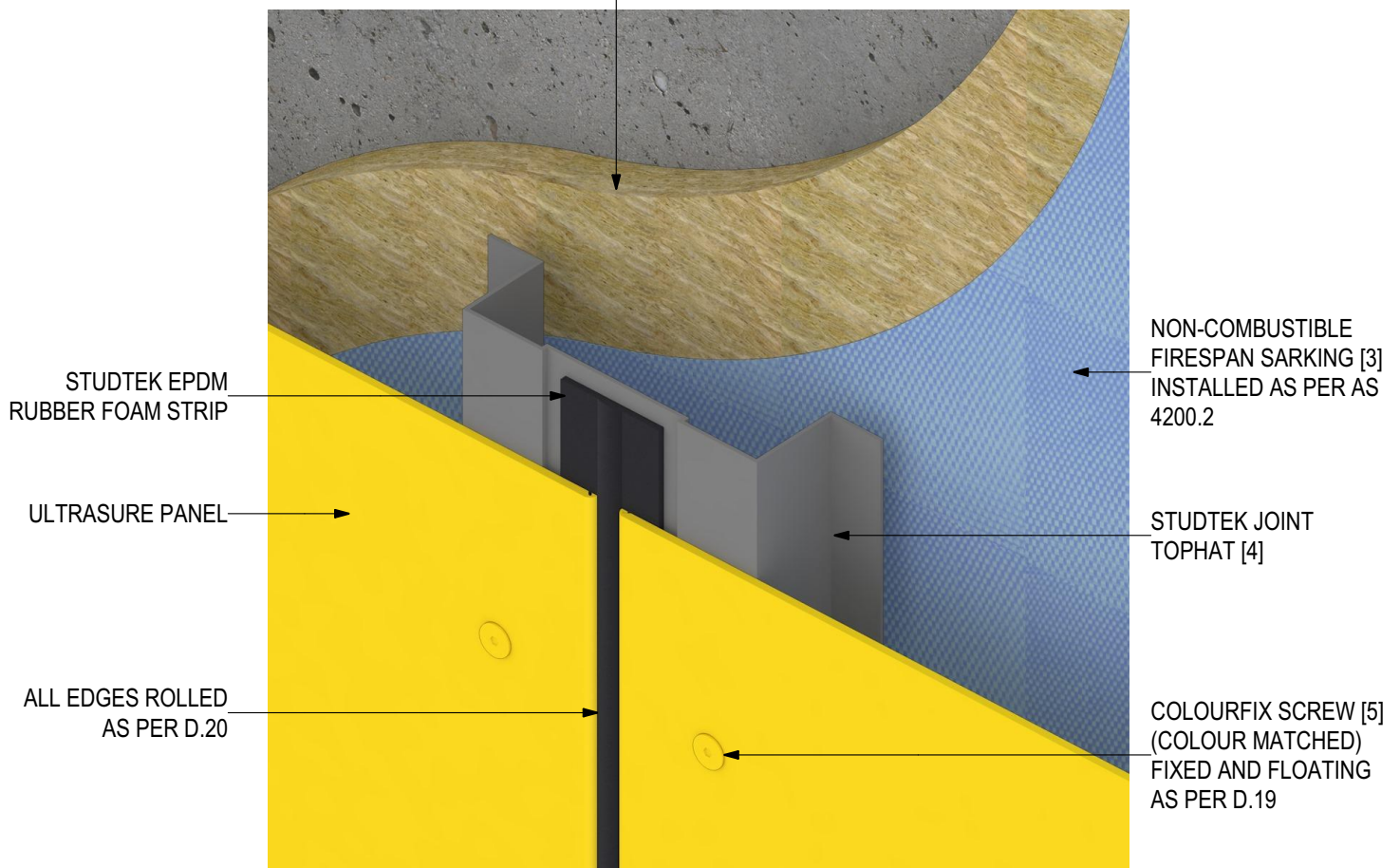




## INSTALLATION DETAILS

### ULTRASURE Pre-finished Solid Aluminium Panel (V0223)

OPTIONAL EXTERIOR INSULATION ZONE WITH BICEP  
FACADE SYSTEM [1] AND NON-COMBUSTIBLE IROCK  
INSULATION [2] (SEE SEPERATE DETAILS)



## SYSTEM COMPONENTS

BICEP FACADE  
SYSTEM [1]



IROCK  
INSULATION [2]



FIRESpan  
SARKING [3]



STUDTEK  
TOPHAT [4]



COLOURFIX  
SCREWS [5]



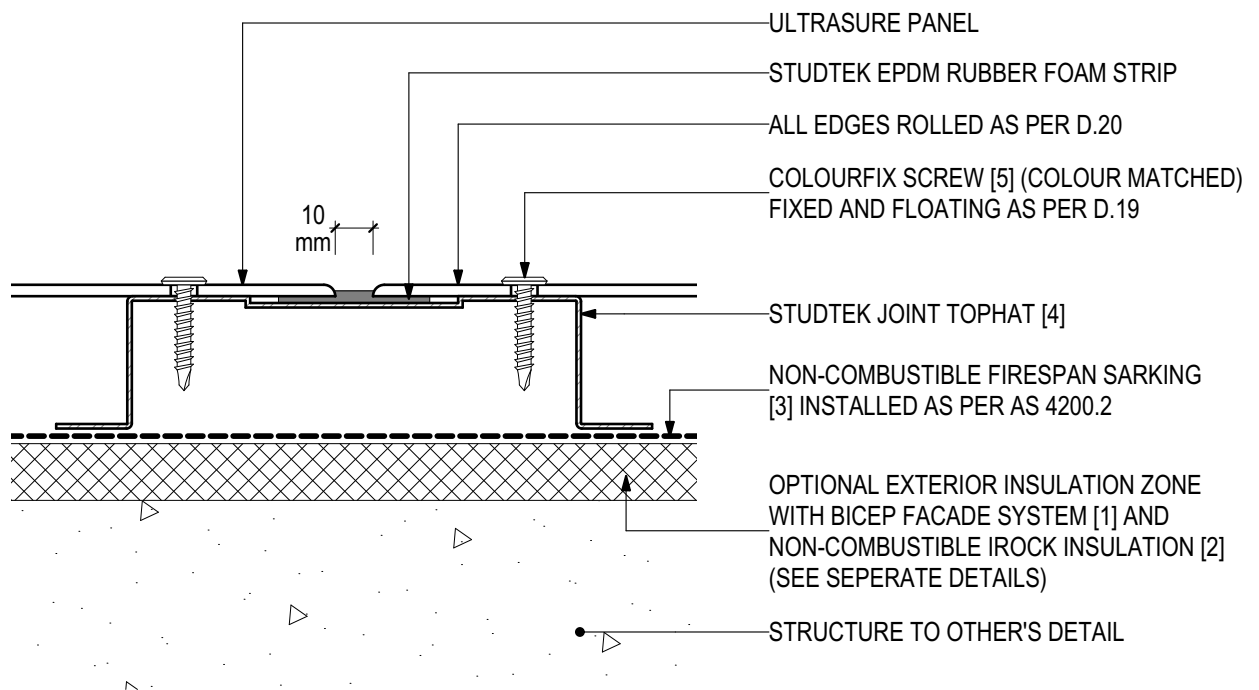
PROLASTIK  
SEALANT [6]





## D.01 - TYPICAL FIXING DETAIL (SCALE 1:2)

### ULTRASURE Pre-finished Solid Aluminium Panel (V0223)



## SYSTEM COMPONENTS

BICEP FACADE  
SYSTEM [1]



IROCK  
INSULATION [2]



FIRESPAN  
SARKING [3]



STUDTEK  
TOPHAT [4]



COLOURFIX  
SCREWS [5]



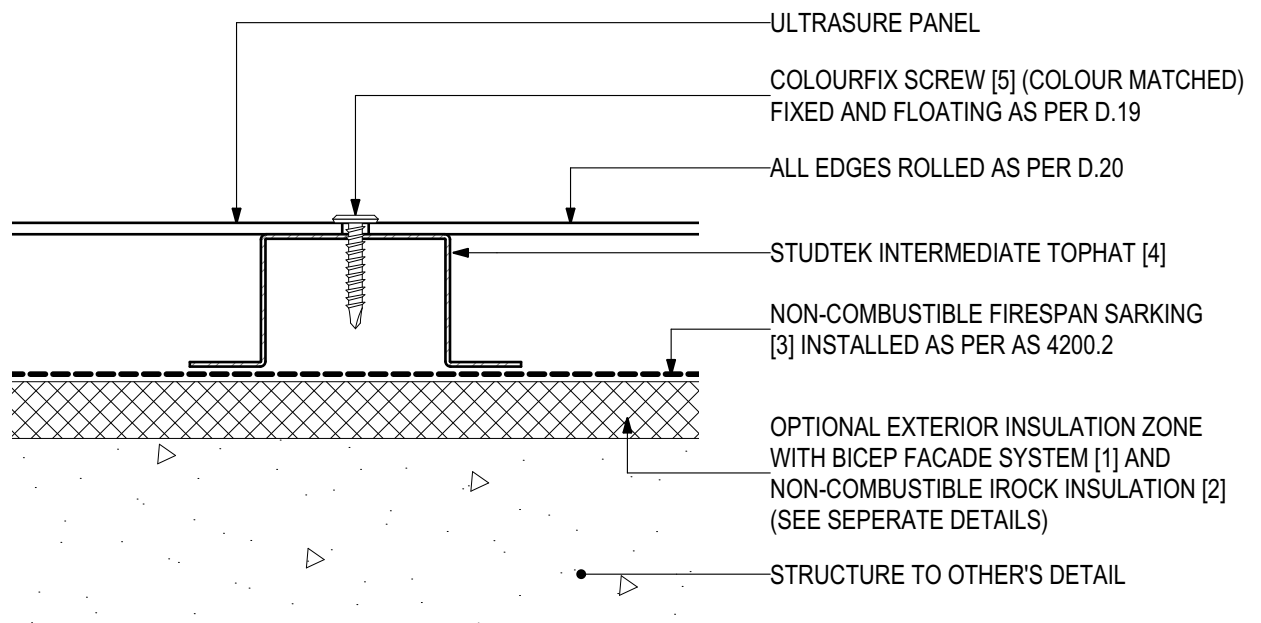
PROLASTIK  
SEALANT [6]





## D.02 - INTERMEDIATE DETAIL (SCALE 1:2)

### ULTRASURE Pre-finished Solid Aluminium Panel (V0223)



## SYSTEM COMPONENTS

BICEP FACADE  
SYSTEM [1]



IROCK  
INSULATION [2]



FIRESpan  
SARKING [3]



STUDTEK  
TOPHAT [4]



COLOURFIX  
SCREWS [5]



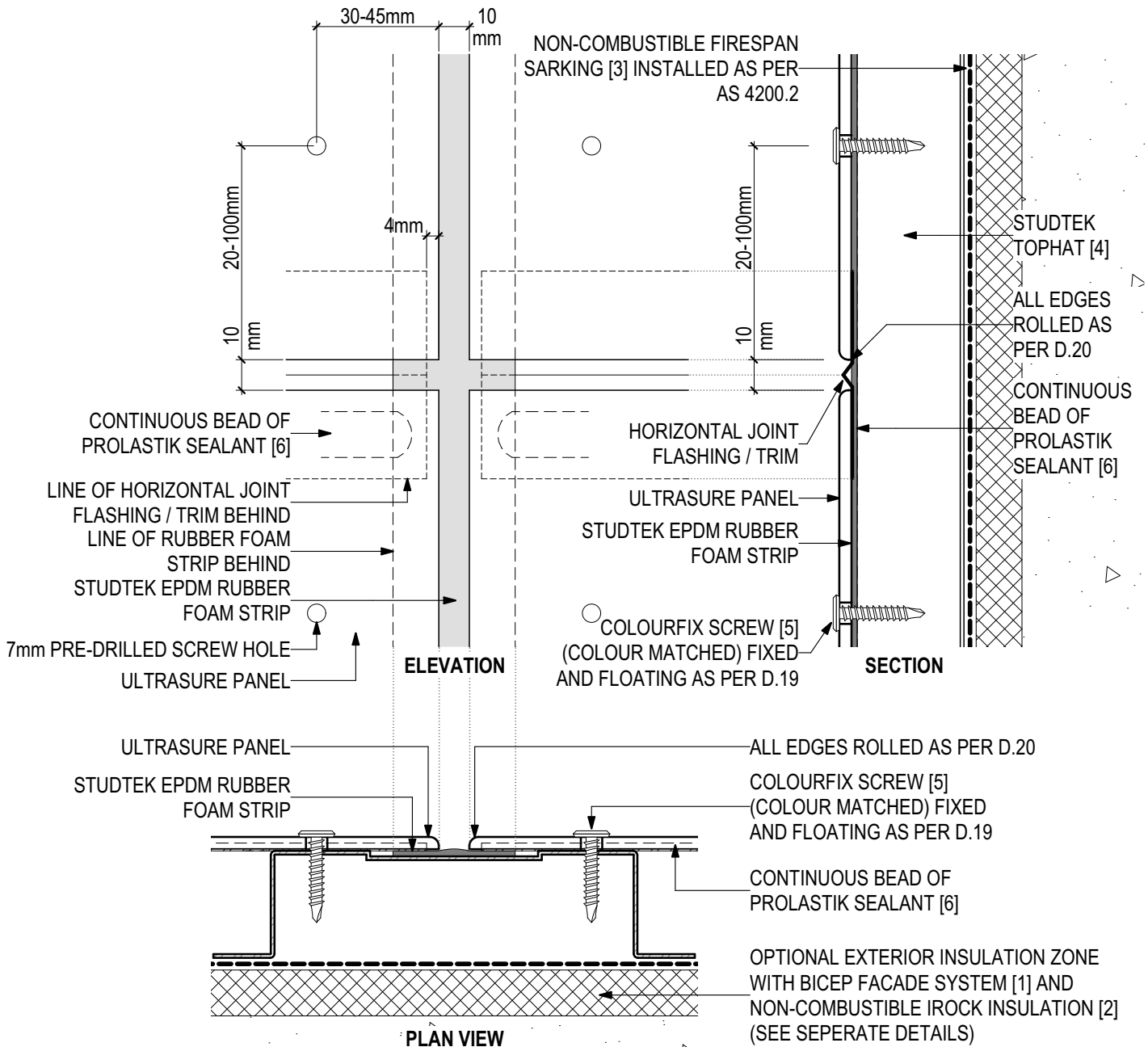
PROLASTIK  
SEALANT [6]





## D.03 - EXPRESSED JOINT DETAIL (SCALE 1:2)

### ULTRASURE Pre-finished Solid Aluminium Panel (V0223)



## SYSTEM COMPONENTS

BICEP FACADE SYSTEM [1]



IROCK INSULATION [2]



FIRESPAN SARKING [3]



STUDTEK TOPHAT [4]



COLOURFIX SCREWS [5]



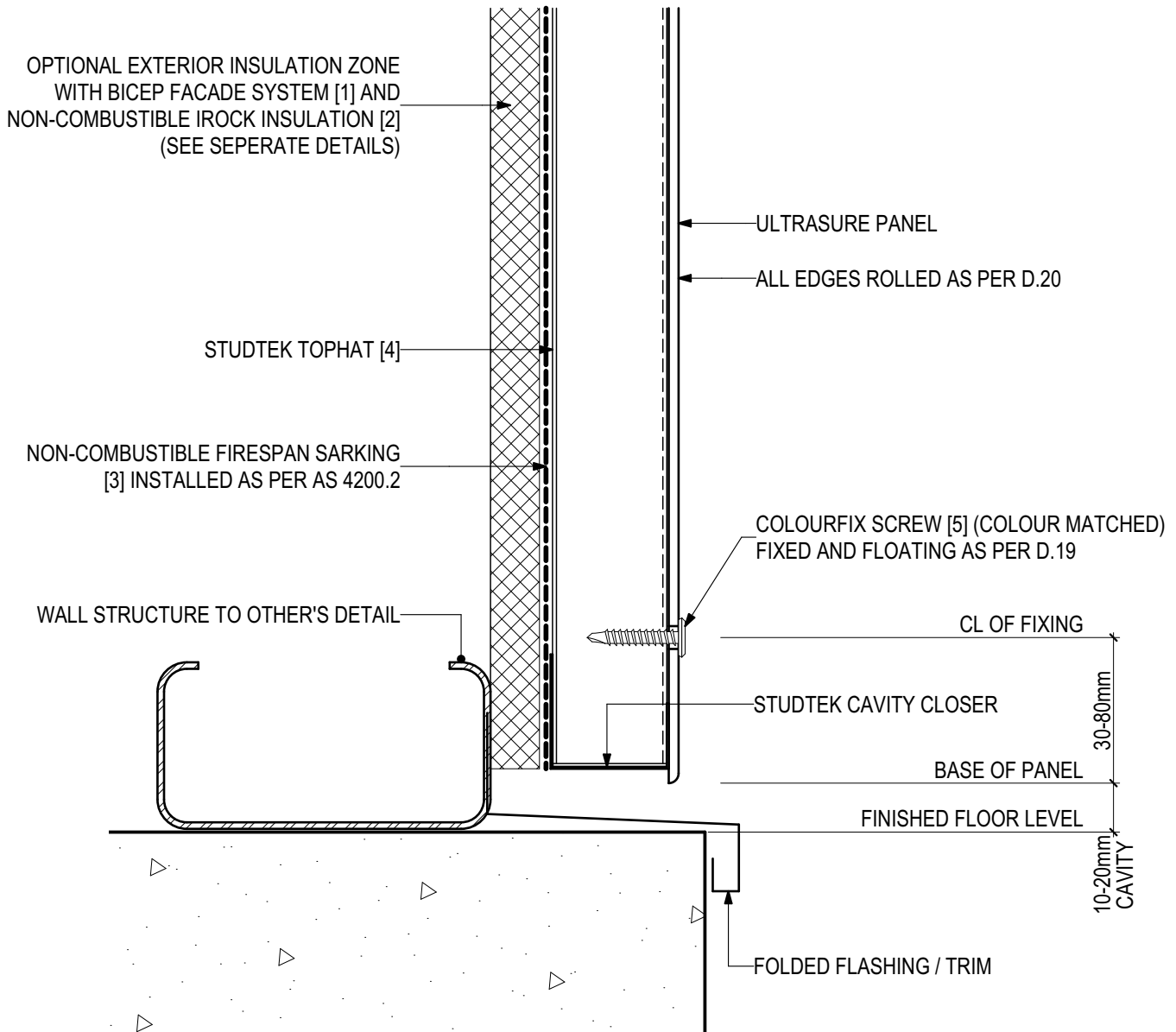
PROLASTIK SEALANT [6]





## D.04 - BASE DETAIL (SCALE 1:2)

### ULTRASURE Pre-finished Solid Aluminium Panel (V0223)



## SYSTEM COMPONENTS

BICEP FACADE  
SYSTEM [1]



IROCK  
INSULATION [2]



FIRESpan  
SARKING [3]



STUDTEK  
TOPHAT [4]



COLOURFIX  
SCREWS [5]



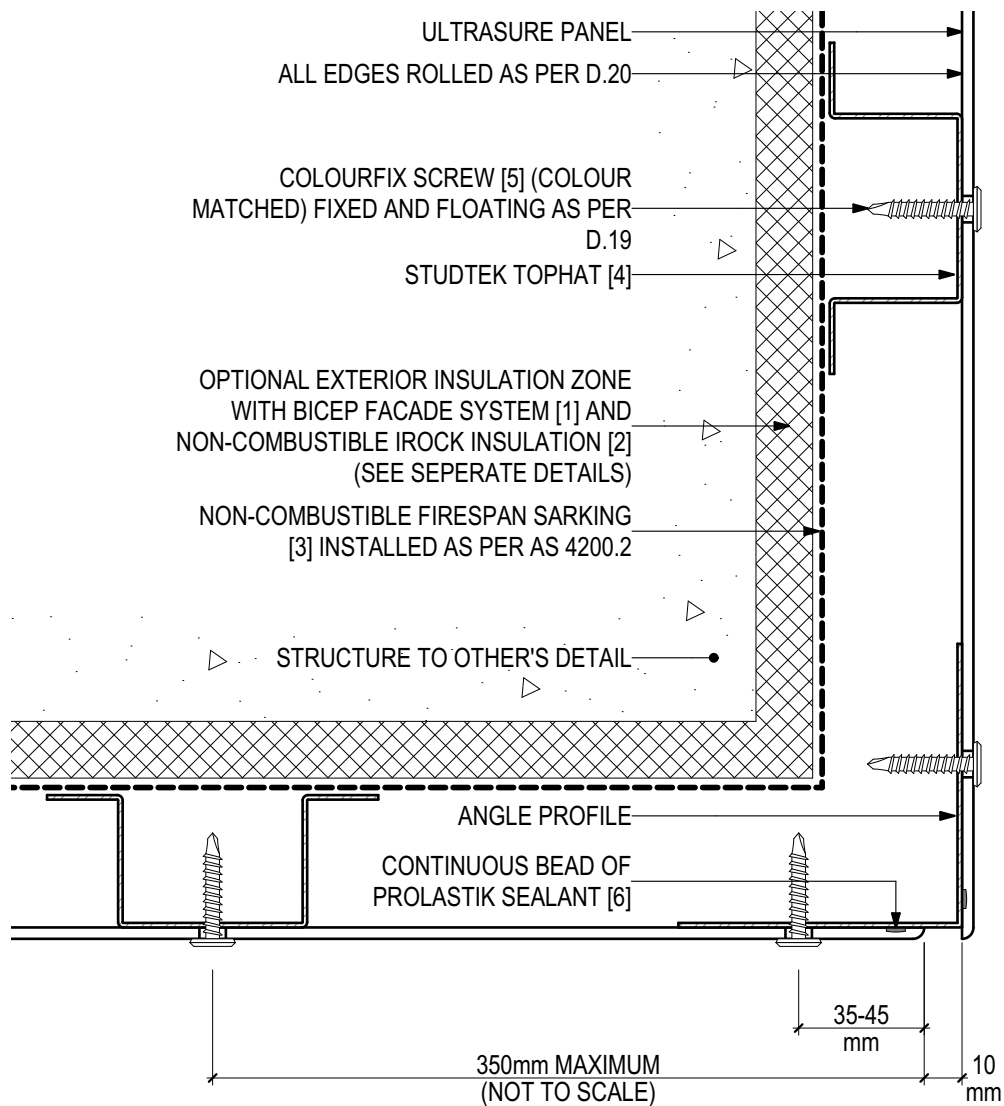
PROLASTIK  
SEALANT [6]





## D.05 - EXTERNAL CORNER (SCALE 1:2)

### ULTRASURE Pre-finished Solid Aluminium Panel (V0223)



## SYSTEM COMPONENTS

BICEP FACADE  
SYSTEM [1]



IROCK  
INSULATION [2]



FIRESAN  
SARKING [3]



STUDTEK  
TOPHAT [4]



COLOURFIX  
SCREWS [5]



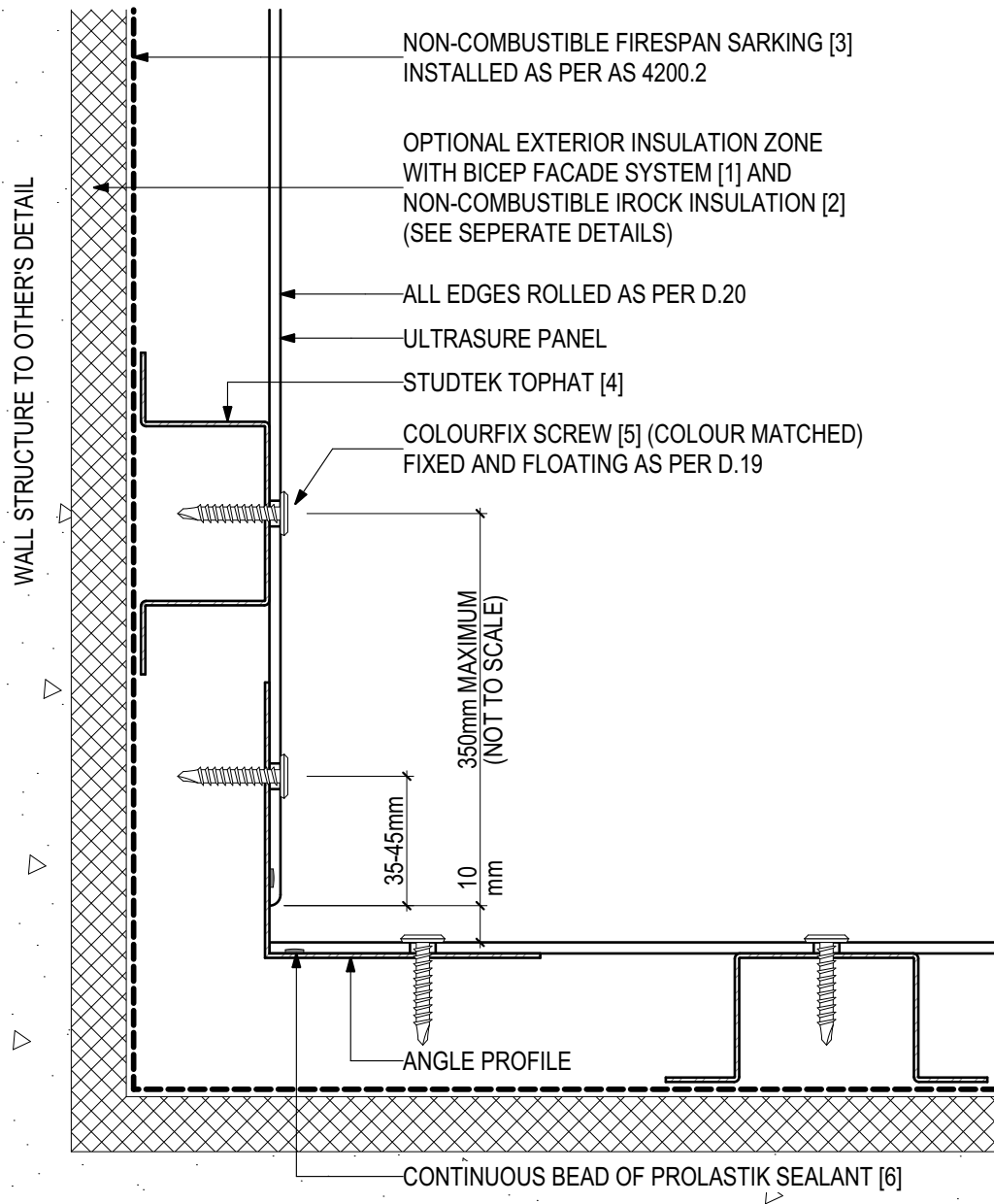
PROLASTIK  
SEALANT [6]





## D.06 - INTERNAL CORNER (SCALE 1:2)

### ULTRASURE Pre-finished Solid Aluminium Panel (V0223)



## SYSTEM COMPONENTS

BICEP FACADE  
SYSTEM [1]



IROCK  
INSULATION [2]



FIRESpan  
SARKING [3]



STUDTEK  
TOPHAT [4]



COLOURFIX  
SCREWS [5]



PROLASTIK  
SEALANT [6]

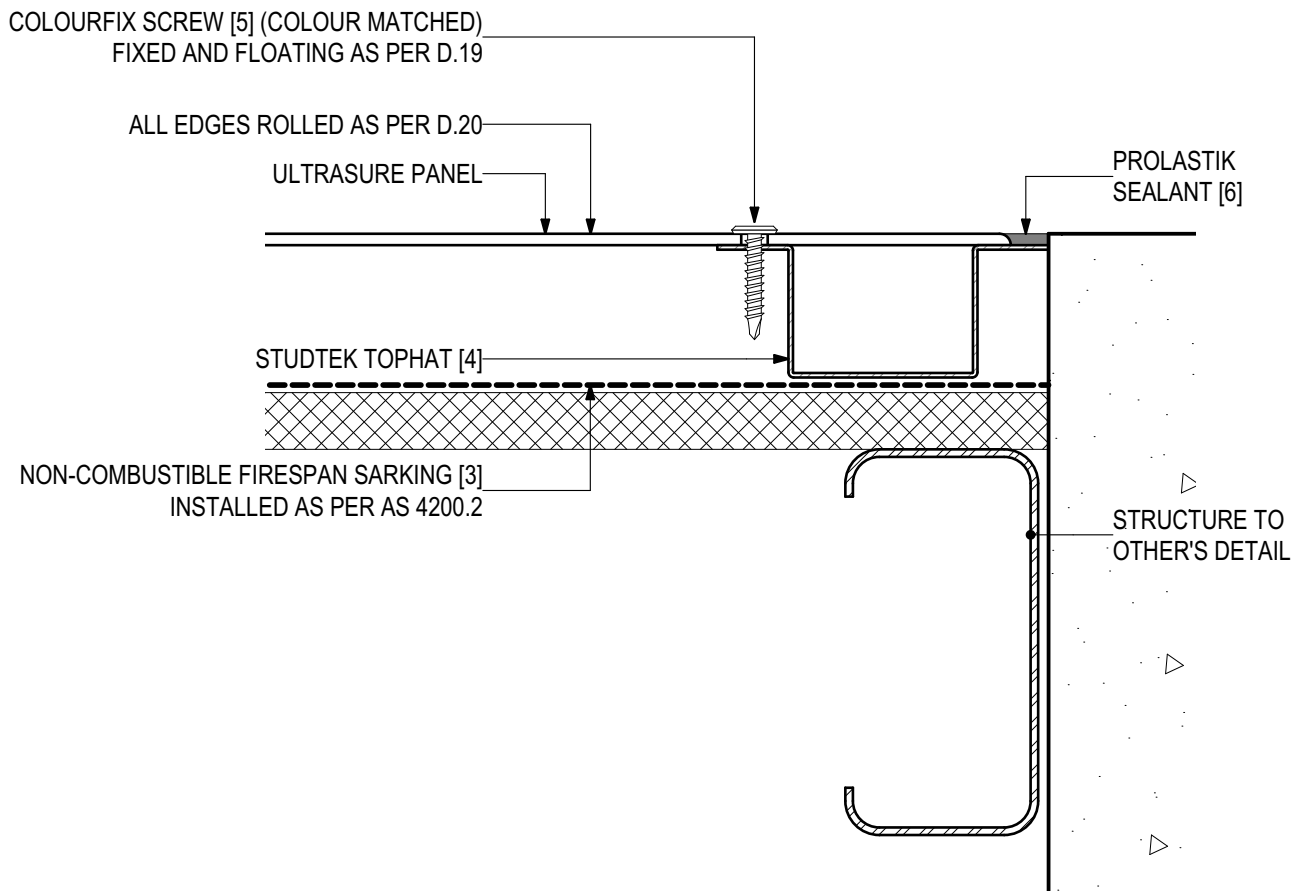






## D.07 - WALL ABUTMENT (SCALE 1:2)

### ULTRASURE Pre-finished Solid Aluminium Panel (V0223)



## SYSTEM COMPONENTS

BICEP FACADE  
SYSTEM [1]



IROCK  
INSULATION [2]



FIRESpan  
SARKING [3]



STUDTEK  
TOPHAT [4]



COLOURFIX  
SCREWS [5]



PROLASTIK  
SEALANT [6]

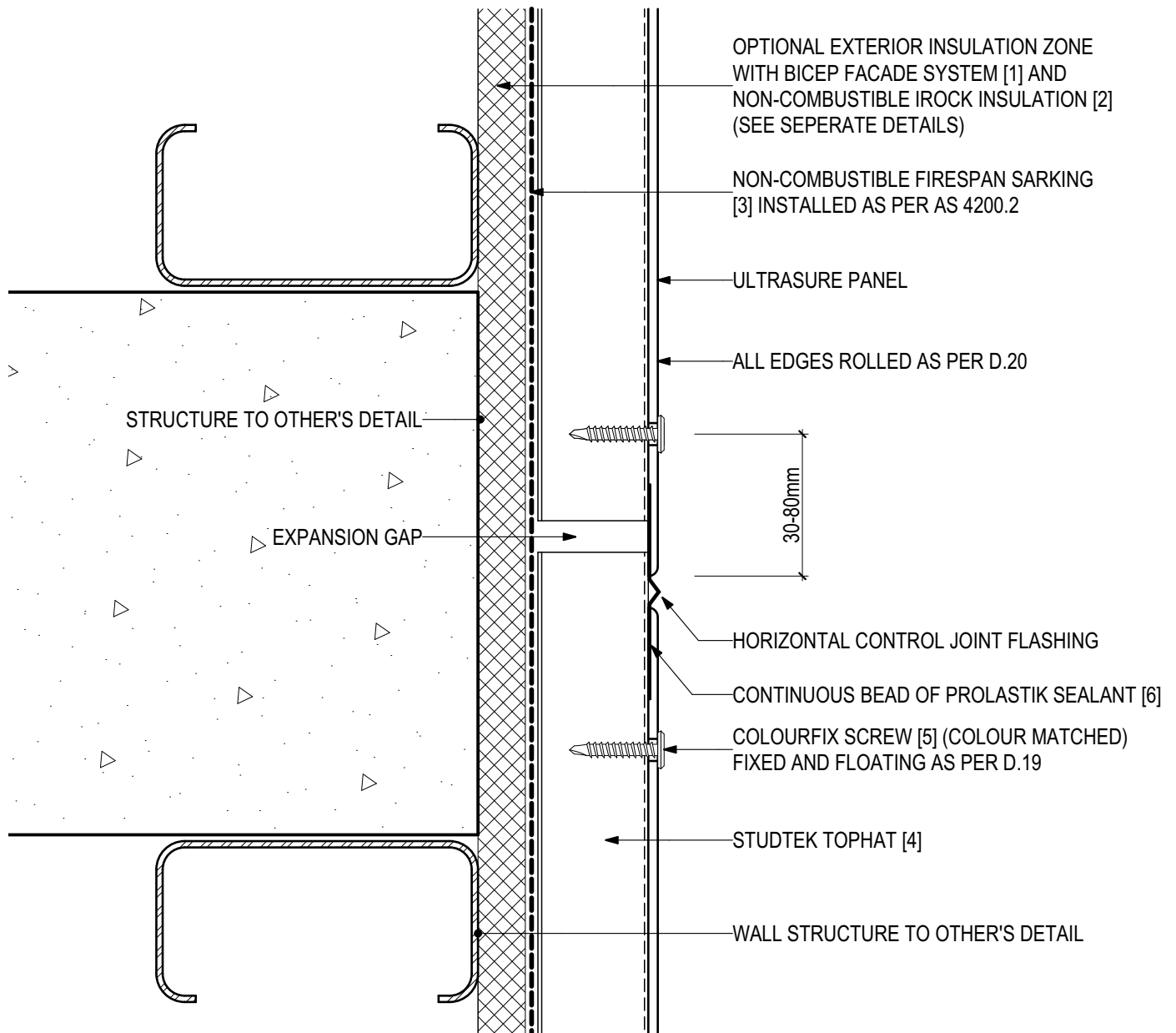






## D.08 - HORIZONTAL CONTROL JOINT (SCALE 1:2)

### ULTRASURE Pre-finished Solid Aluminium Panel (V0223)



## SYSTEM COMPONENTS

BICEP FACADE SYSTEM [1]



IROCK INSULATION [2]



FIRESpan SARKING [3]



STUDEK TOPHAT [4]



COLOURFIX SCREWS [5]



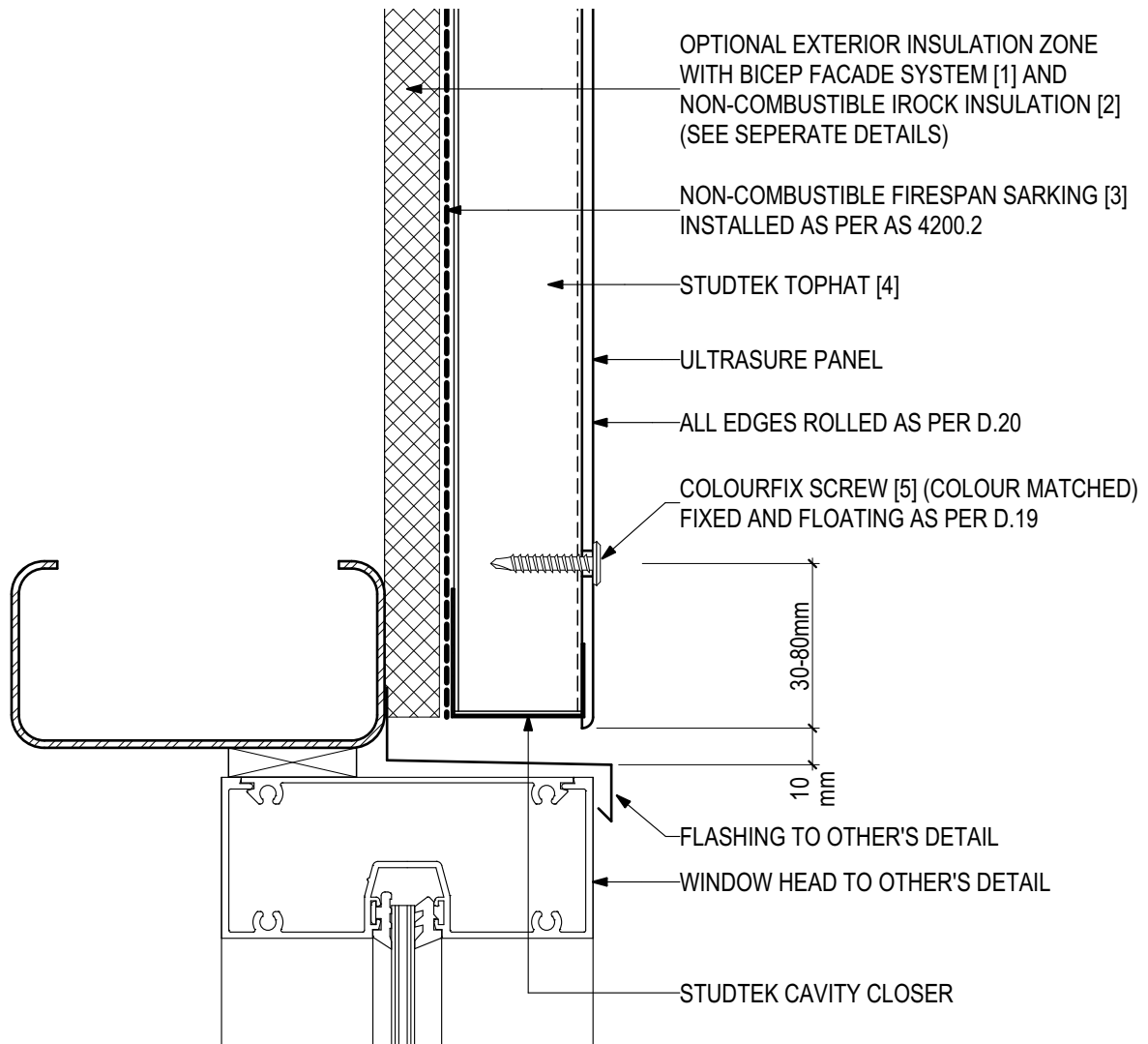
PROLASTIK SEALANT [6]





## D.09 - WINDOW HEAD (SCALE 1:2)

### ULTRASURE Pre-finished Solid Aluminium Panel (V0223)



## SYSTEM COMPONENTS

BICEP FACADE  
SYSTEM [1]



IROCK  
INSULATION [2]



FIRESpan  
SARKING [3]



STUDTEK  
TOPHAT [4]



COLOURFIX  
SCREWS [5]



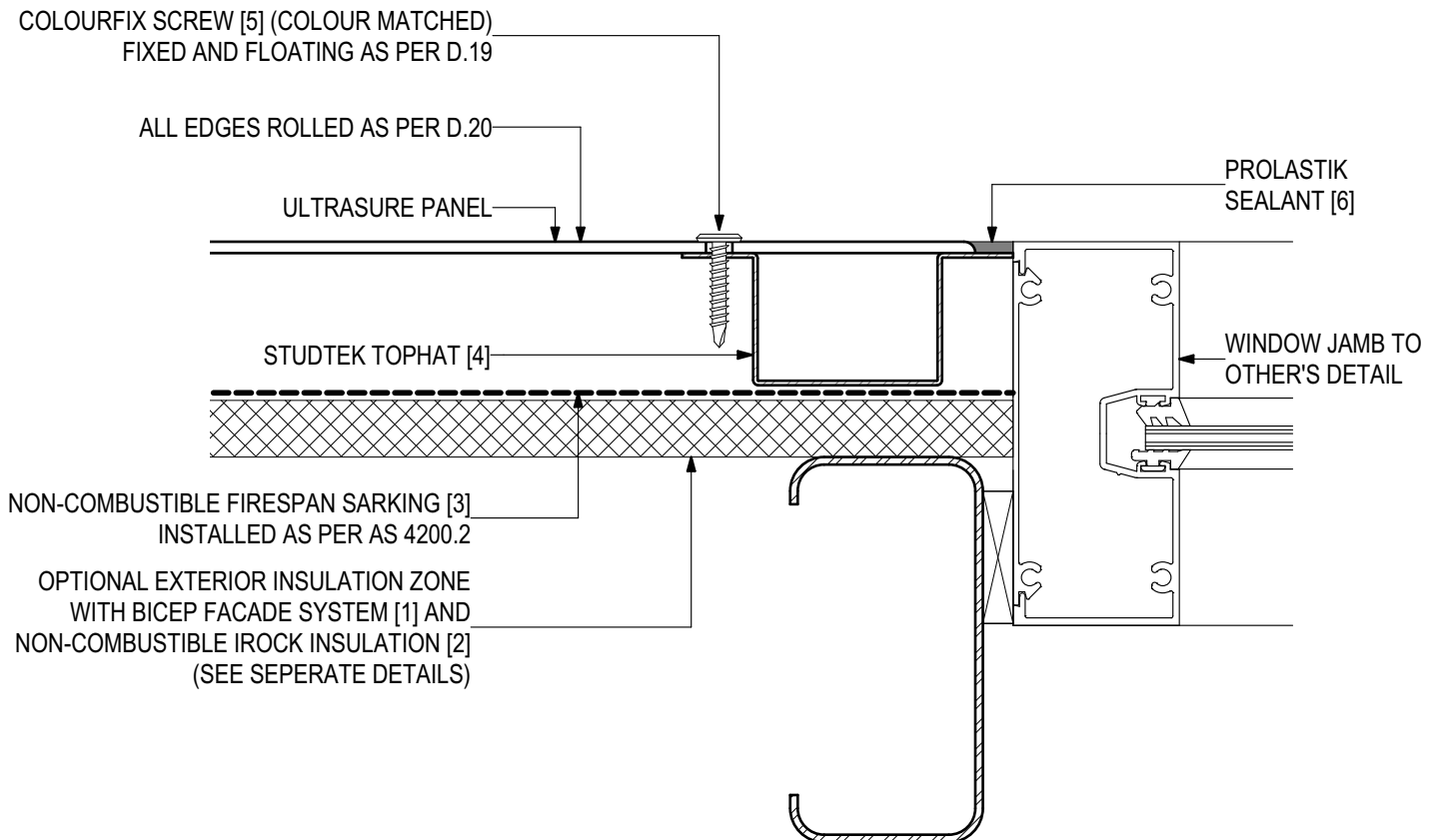
PROLASTIK  
SEALANT [6]





## D.10 - WINDOW JAMB (SCALE 1:2)

### ULTRASURE Pre-finished Solid Aluminium Panel (V0223)



## SYSTEM COMPONENTS

BICEP FACADE  
SYSTEM [1]



IROCK  
INSULATION [2]



FIRESpan  
SARKING [3]



STUDEK  
TOPHAT [4]



COLOURFIX  
SCREWS [5]



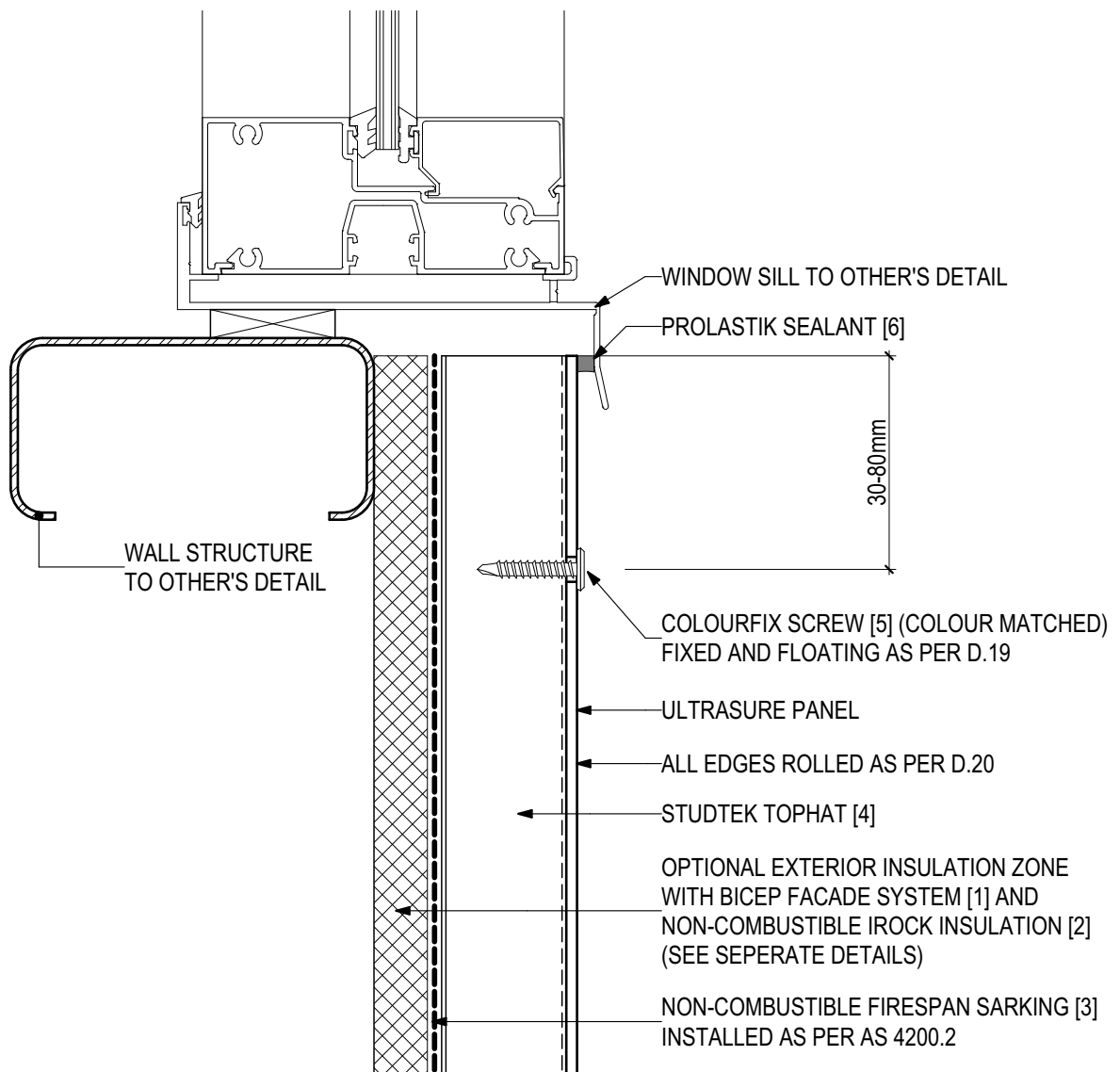
PROLASTIK  
SEALANT [6]





## D.11 - WINDOW SILL (SCALE 1:2)

### ULTRASURE Pre-finished Solid Aluminium Panel (V0223)



## SYSTEM COMPONENTS

BICEP FACADE  
SYSTEM [1]



IROCK  
INSULATION [2]



FIRESPAN  
SARKING [3]



STUDTEK  
TOPHAT [4]



COLOURFIX  
SCREWS [5]



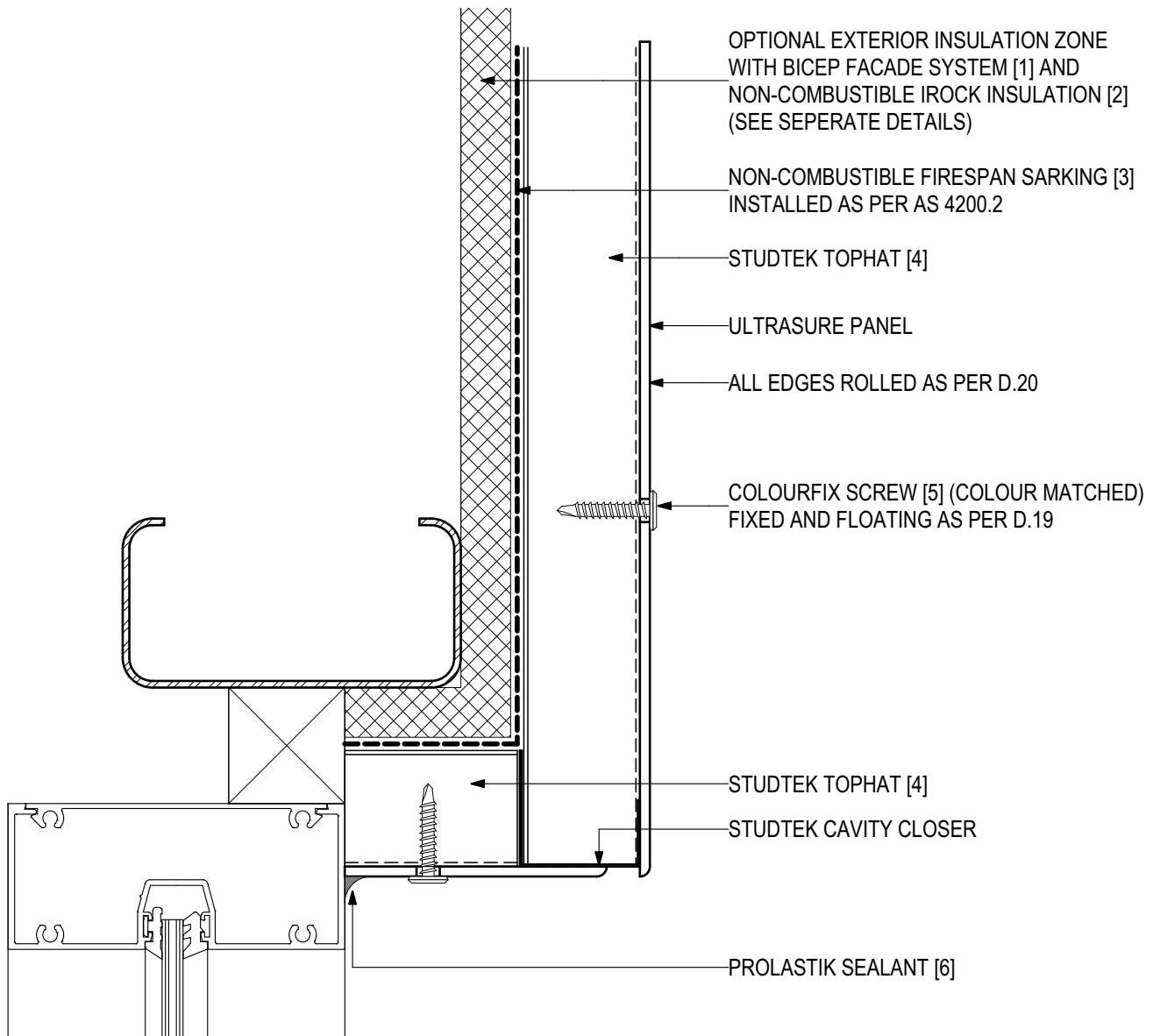
PROLASTIK  
SEALANT [6]





## D.12 - INSET WINDOW HEAD (SCALE 1:2)

### ULTRASURE Pre-finished Solid Aluminium Panel (V0223)



## SYSTEM COMPONENTS

BICEP FACADE  
SYSTEM [1]



IROCK  
INSULATION [2]



FIRESpan  
SARKING [3]



STUDTEK  
TOPHAT [4]



COLOURFIX  
SCREWS [5]



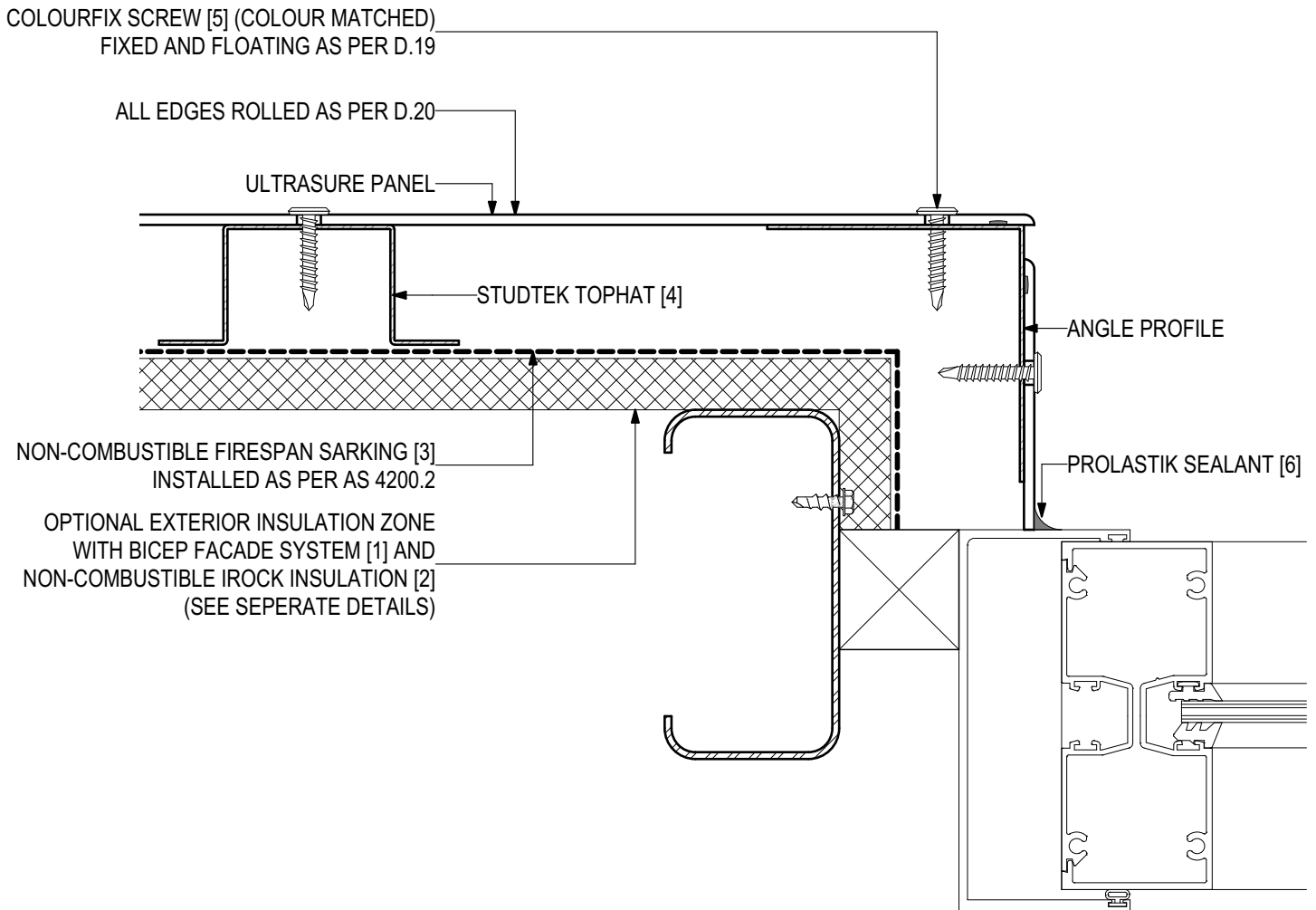
PROLASTIK  
SEALANT [6]





## D.13 - INSET WINDOW JAMB (SCALE 1:2)

### ULTRASURE Pre-finished Solid Aluminium Panel (V0223)



## SYSTEM COMPONENTS

BICEP FACADE  
SYSTEM [1]



IROCK  
INSULATION [2]



FIRESpan  
SARKING [3]



STUDTEK  
TOPHAT [4]



COLOURFIX  
SCREWS [5]



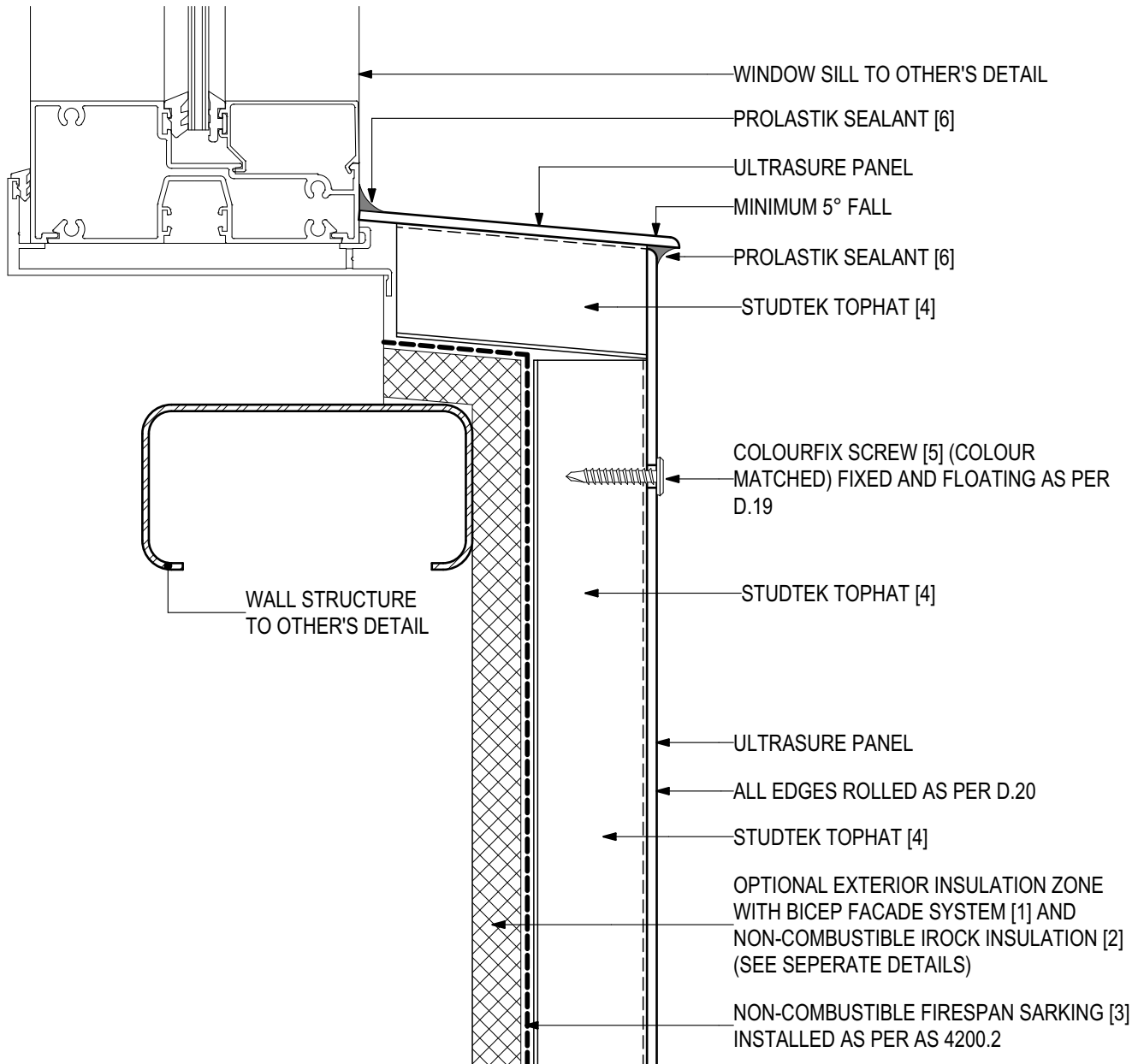
PROLASTIK  
SEALANT [6]





## D.14 - INSET WINDOW SILL (SCALE 1:2)

### ULTRASURE Pre-finished Solid Aluminium Panel (V0223)



## SYSTEM COMPONENTS

BICEP FACADE  
SYSTEM [1]



IROCK  
INSULATION [2]



FIRESPAN  
SARKING [3]



STUDEK  
TOPHAT [4]



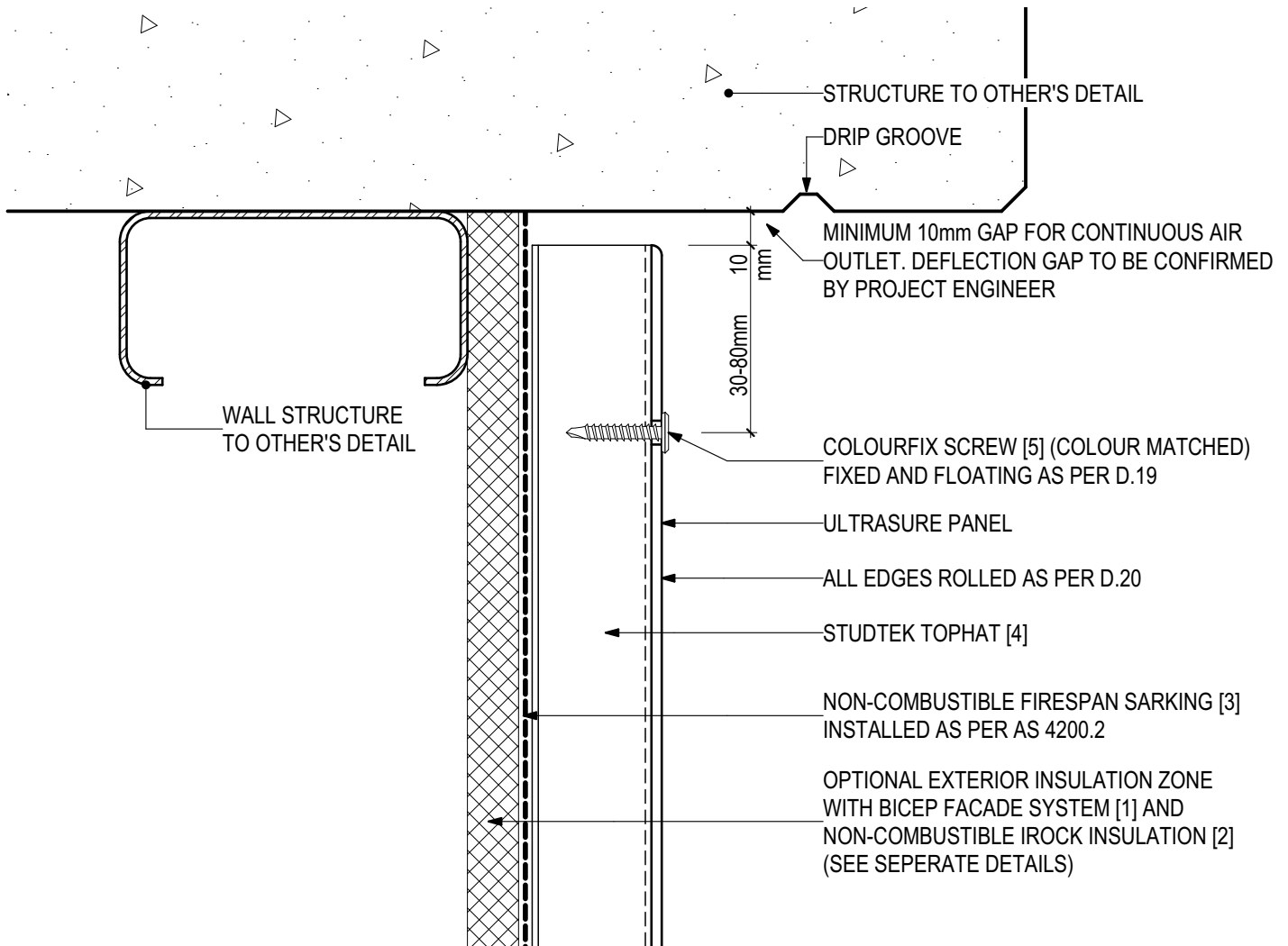
COLOURFIX  
SCREWS [5]



PROLASTIK  
SEALANT [6]





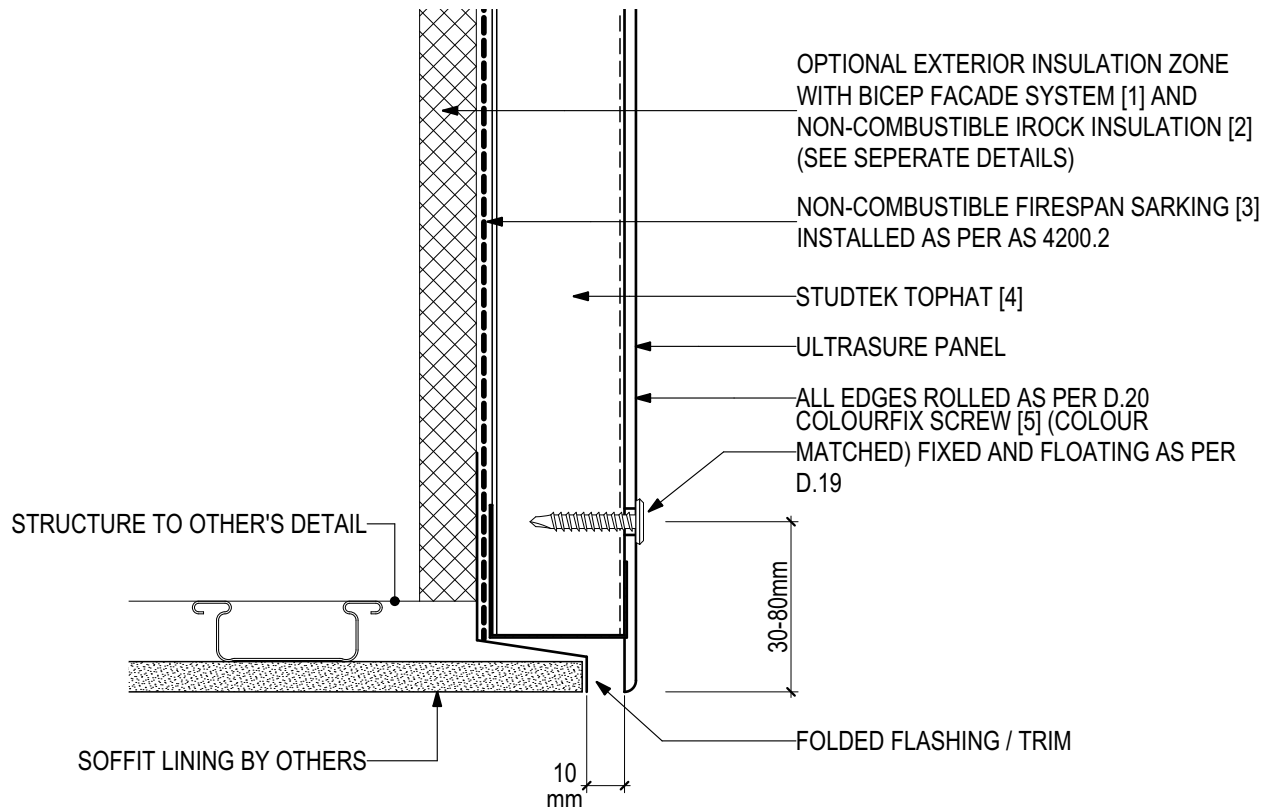


BICEP FACADE SYSTEM [1]	IROCK INSULATION [2]	FIRESPAN SARKING [3]	STUDTEK TOPHAT [4]	COLOURFIX SCREWS [5]	PROLASTIK SEALANT [6]
					



## D.16 - SOFFIT JUNCTION (SCALE 1:2)

### ULTRASURE Pre-finished Solid Aluminium Panel (V0223)



## SYSTEM COMPONENTS

BICEP FACADE  
SYSTEM [1]



IROCK  
INSULATION [2]



FIRESpan  
SARKING [3]



STUDTEK  
TOPHAT [4]



COLOURFIX  
SCREWS [5]



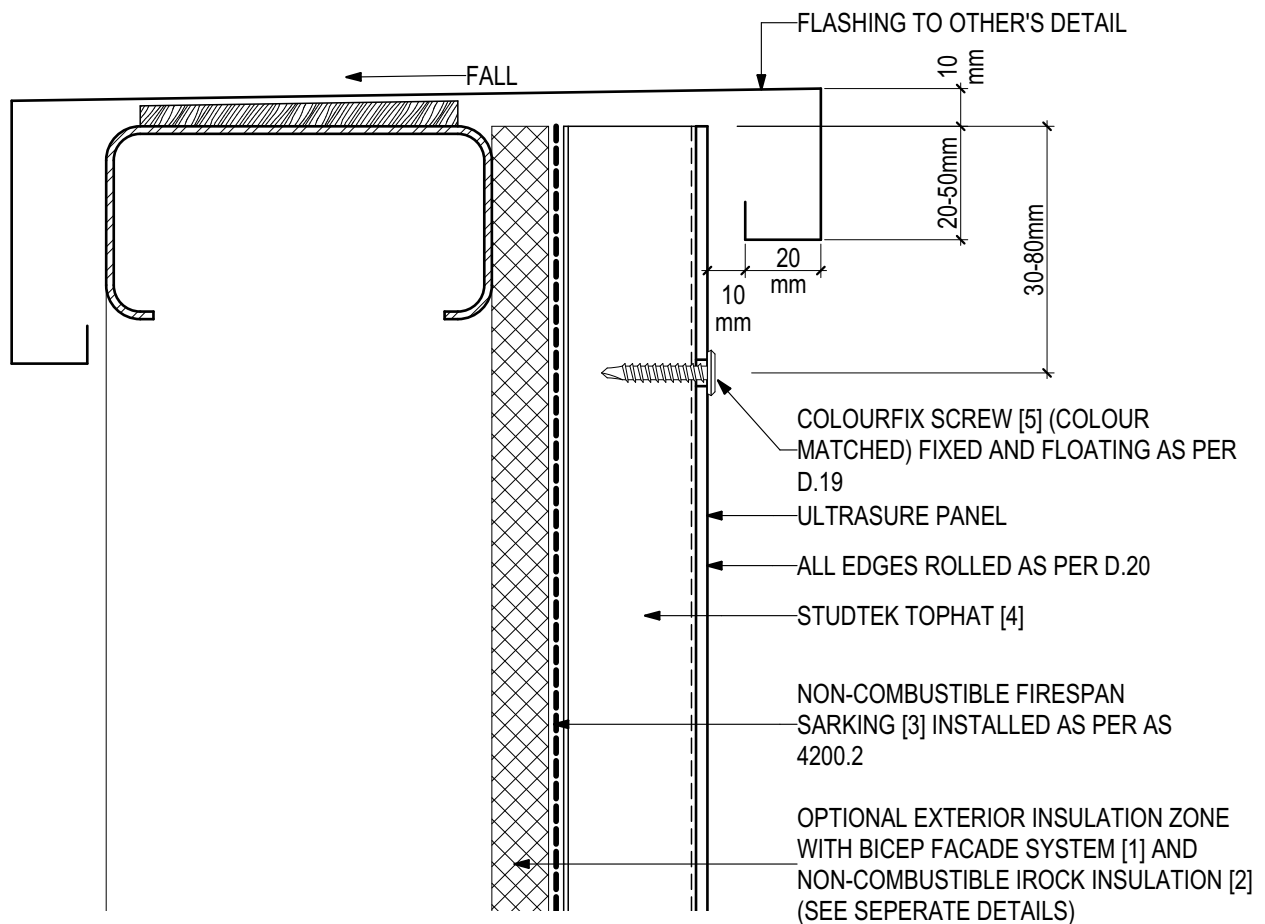
PROLASTIK  
SEALANT [6]





## D.17 - PARAPET DETAIL (SCALE 1:2)

### ULTRASURE Pre-finished Solid Aluminium Panel (V0223)



## SYSTEM COMPONENTS

BICEP FACADE  
SYSTEM [1]



IROCK  
INSULATION [2]



FIRESpan  
SARKING [3]



STUDTEK  
TOPHAT [4]



COLOURFIX  
SCREWS [5]



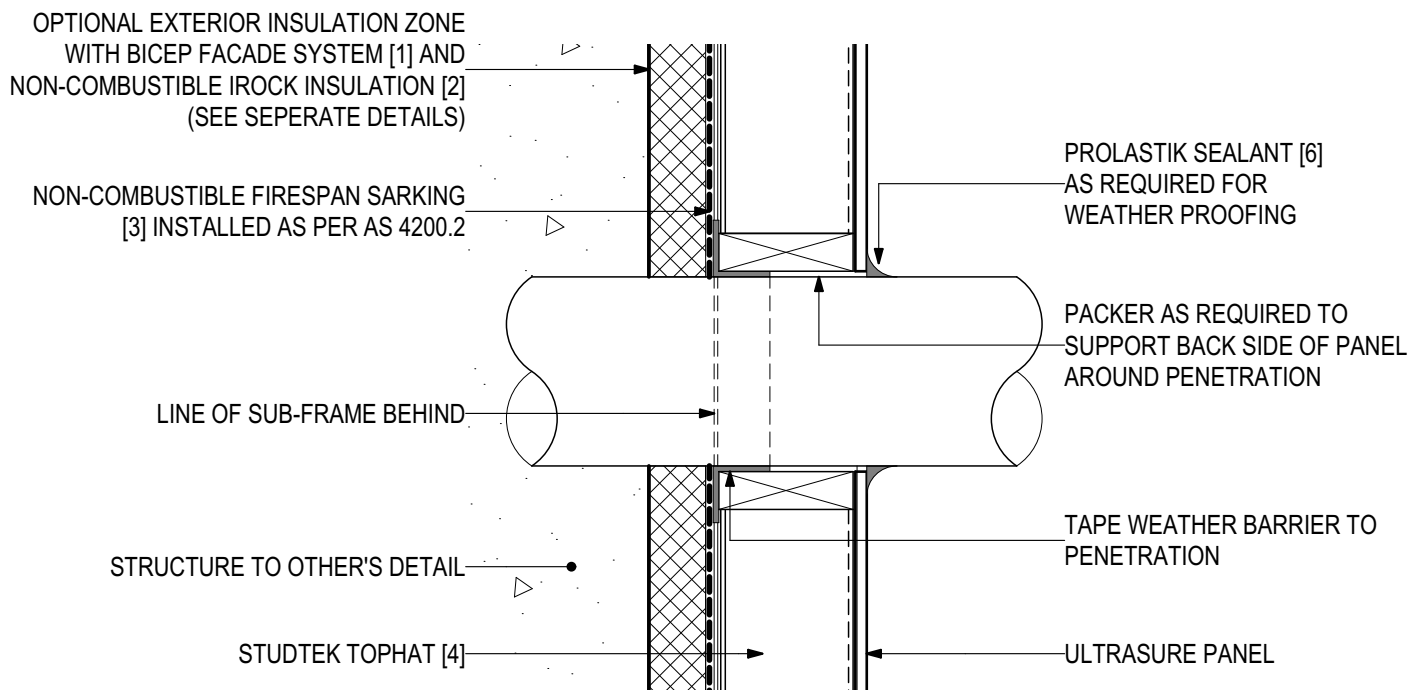
PROLASTIK  
SEALANT [6]





## D.18 - TYPICAL PENETRATION DETAIL (SCALE 1:2)

### ULTRASURE Pre-finished Solid Aluminium Panel (V0223)



## SYSTEM COMPONENTS

BICEP FACADE  
SYSTEM [1]



IROCK  
INSULATION [2]



FIRESpan  
SARKING [3]



STUDEK  
TOPHAT [4]



COLOURFIX  
SCREWS [5]



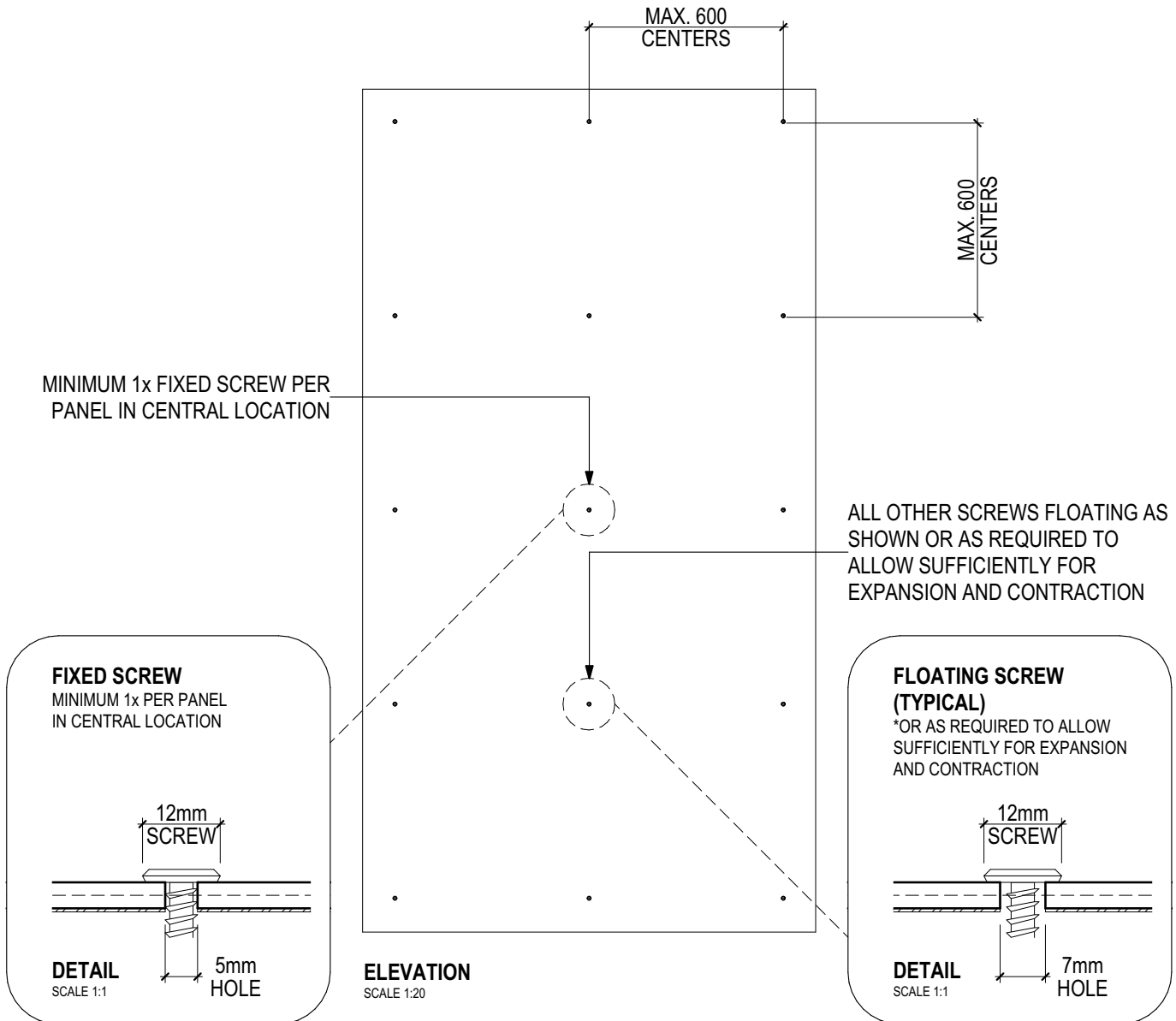
PROLASTIK  
SEALANT [6]





## D.19 - FIXED AND FLOATING SCREW LAYOUT (SCALE 1:20, 1:1)

### ULTRASURE Pre-finished Solid Aluminium Panel (V0223)



## SYSTEM COMPONENTS

BICEP FACADE  
SYSTEM [1]



IROCK  
INSULATION [2]



FIRESpan  
SARKING [3]



STUDEK  
TOPHAT [4]



COLOURFIX  
SCREWS [5]



PROLASTIK  
SEALANT [6]



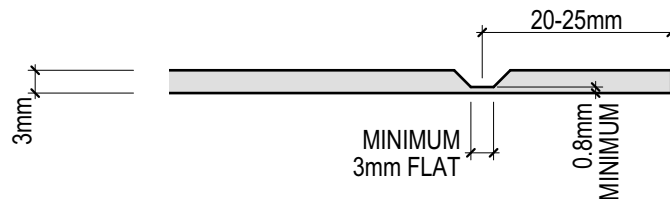


## D.20 - ROLLED EDGE DETAIL (SCALE 1:1)

### ULTRASURE Pre-finished Solid Aluminium Panel (V0223)

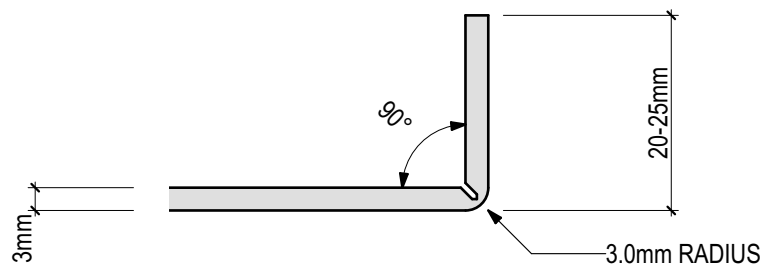
#### STEP 1

V-GROOVING ON CNC MACHINE (45° WITH MINIMUM 3.0mm FLAT)



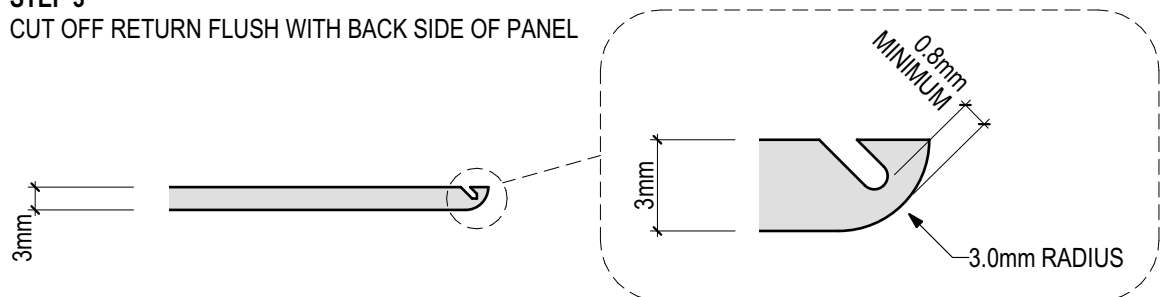
#### STEP 2

FOLDING 20-25mm RETURN 90° TO THE PANEL FACE



#### STEP 3

CUT OFF RETURN FLUSH WITH BACK SIDE OF PANEL



#### STEP 4

REPEAT ABOVE PROCESS FOR ALL PANEL EDGES

## SYSTEM COMPONENTS

BICEP FACADE  
SYSTEM [1]



IROCK  
INSULATION [2]



FIRESPAN  
SARKING [3]



STUDTEK  
TOPHAT [4]



COLOURFIX  
SCREWS [5]



PROLASTIK  
SEALANT [6]

