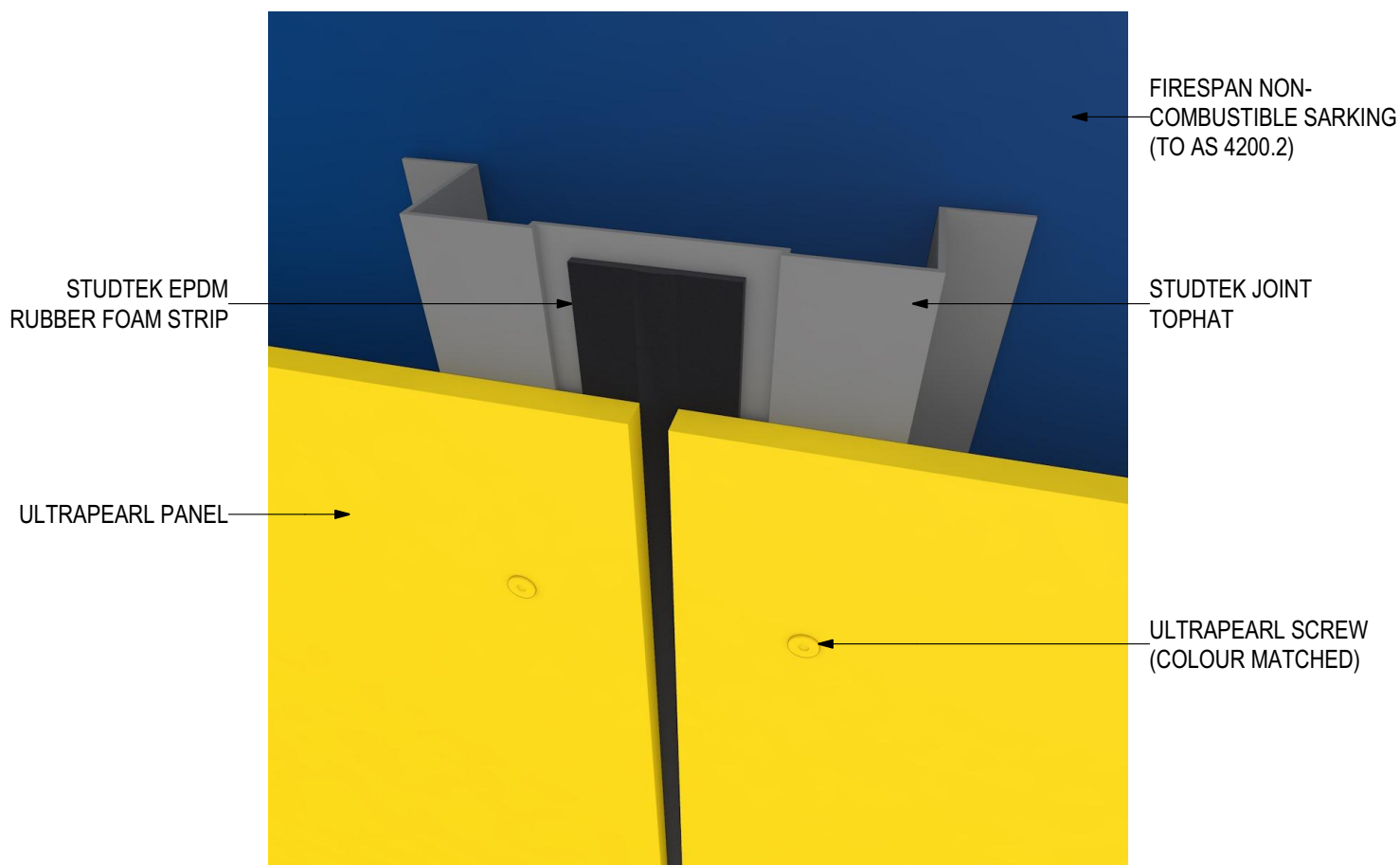


ULTRAPEARL Pre-finished Fibre Cement Panel (V0120)

UP-09-VSF Visible Screw Fix (Colour-matched)

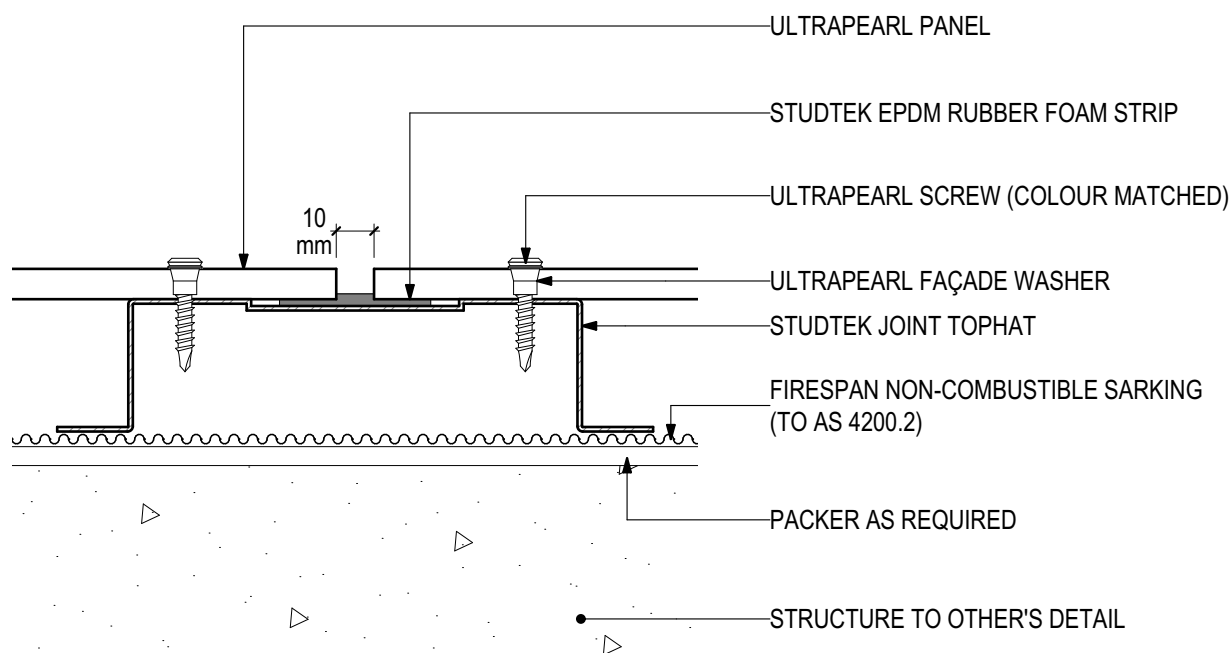


INSTALLATION DETAILS

Disclaimer: These details are general design details for use as a guide. Any use is at the user's own discretion and risk. All detailing and installation should be in accordance with all the relevant codes and standards as per current NCC requirements.

Blue Chip Group Pty Ltd
P: 08 9451 2344
F: 08 9451 8983
E: sales@bluechipgroup.net.au

ULTRAPEARL Pre-finished Fibre Cement Panel (V0120)
UP-09-VSF Visible Screw Fix (Colour-matched)

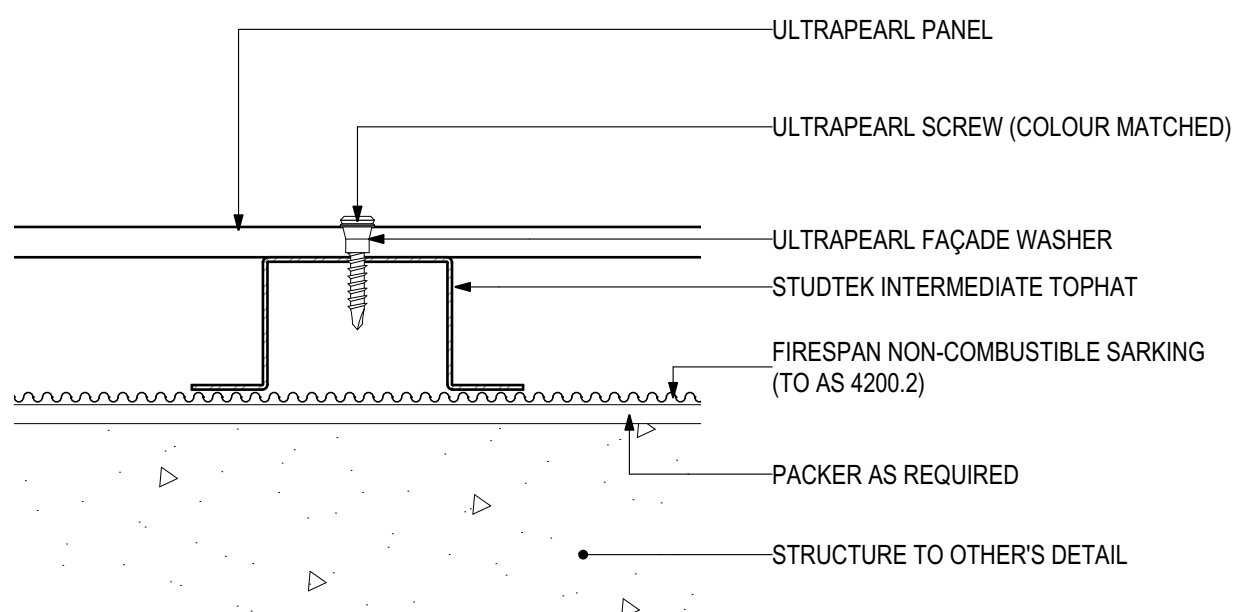


D.01 - TYPICAL FIXING DETAIL
SCALE 1:2

Disclaimer: These details are general design details for use as a guide. Any use is at the user's own discretion and risk. All detailing and installation should be in accordance with all the relevant codes and standards as per current NCC requirements.

Blue Chip Group Pty Ltd
P: 08 9451 2344
F: 08 9451 8983
E: sales@bluechipgroup.net.au

ULTRAPEARL Pre-finished Fibre Cement Panel (V0120)
UP-09-VSF Visible Screw Fix (Colour-matched)



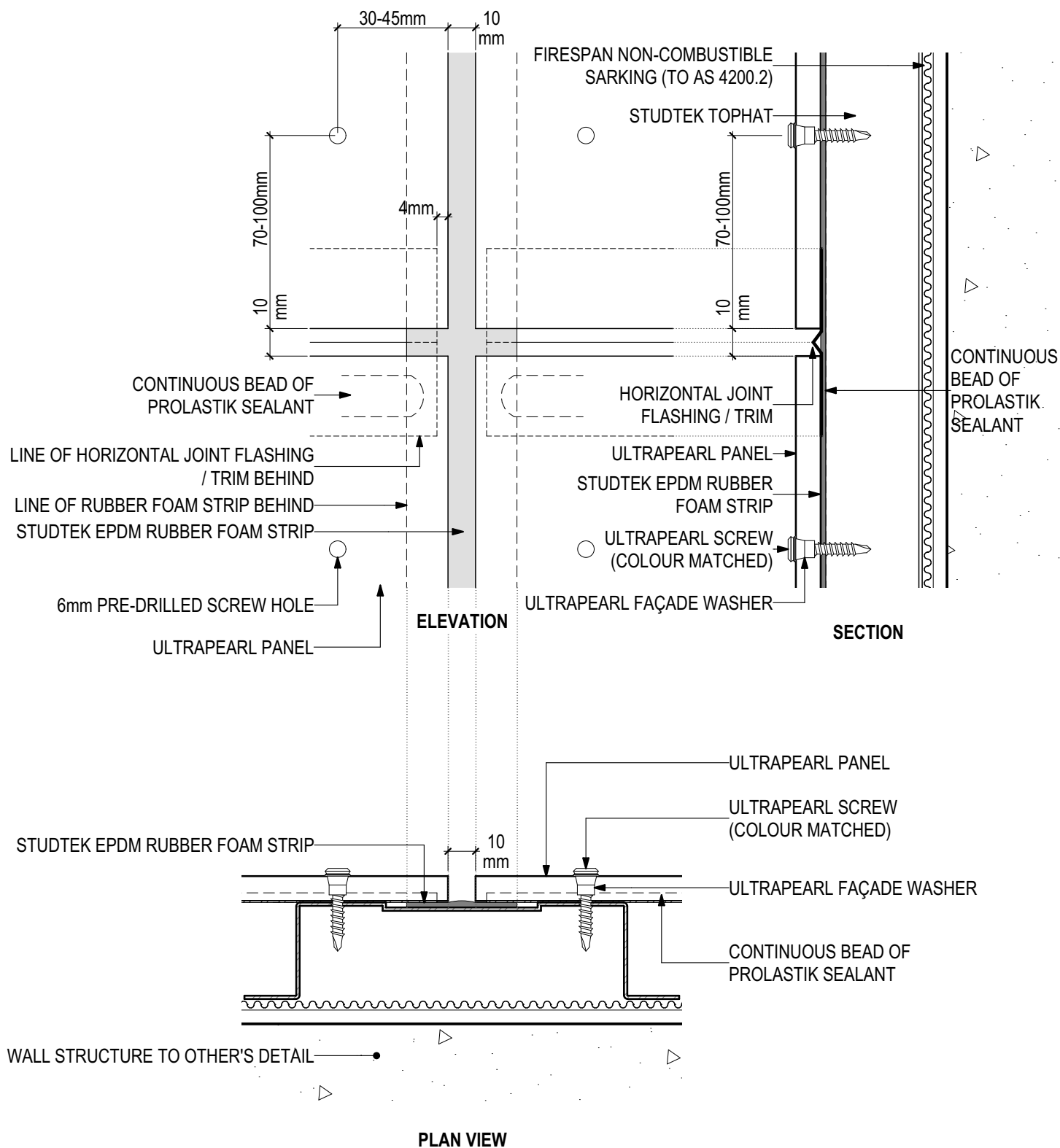
D.02 - INTERMEDIATE DETAIL
SCALE 1:2

Disclaimer: These details are general design details for use as a guide. Any use is at the user's own discretion and risk. All detailing and installation should be in accordance with all the relevant codes and standards as per current NCC requirements.

Blue Chip Group Pty Ltd
P: 08 9451 2344
F: 08 9451 8983
E: sales@bluechipgroup.net.au

ULTRAPEARL Pre-finished Fibre Cement Panel (V0120)

UP-09-VSF Visible Screw Fix (Colour-matched)



D.03 - EXPRESSED JOINT DETAIL

SCALE 1:2

Disclaimer: These details are general design details for use as a guide. Any use is at the user's own discretion and risk. All detailing and installation should be in accordance with all the relevant codes and standards as per current NCC requirements.

Blue Chip Group Pty Ltd

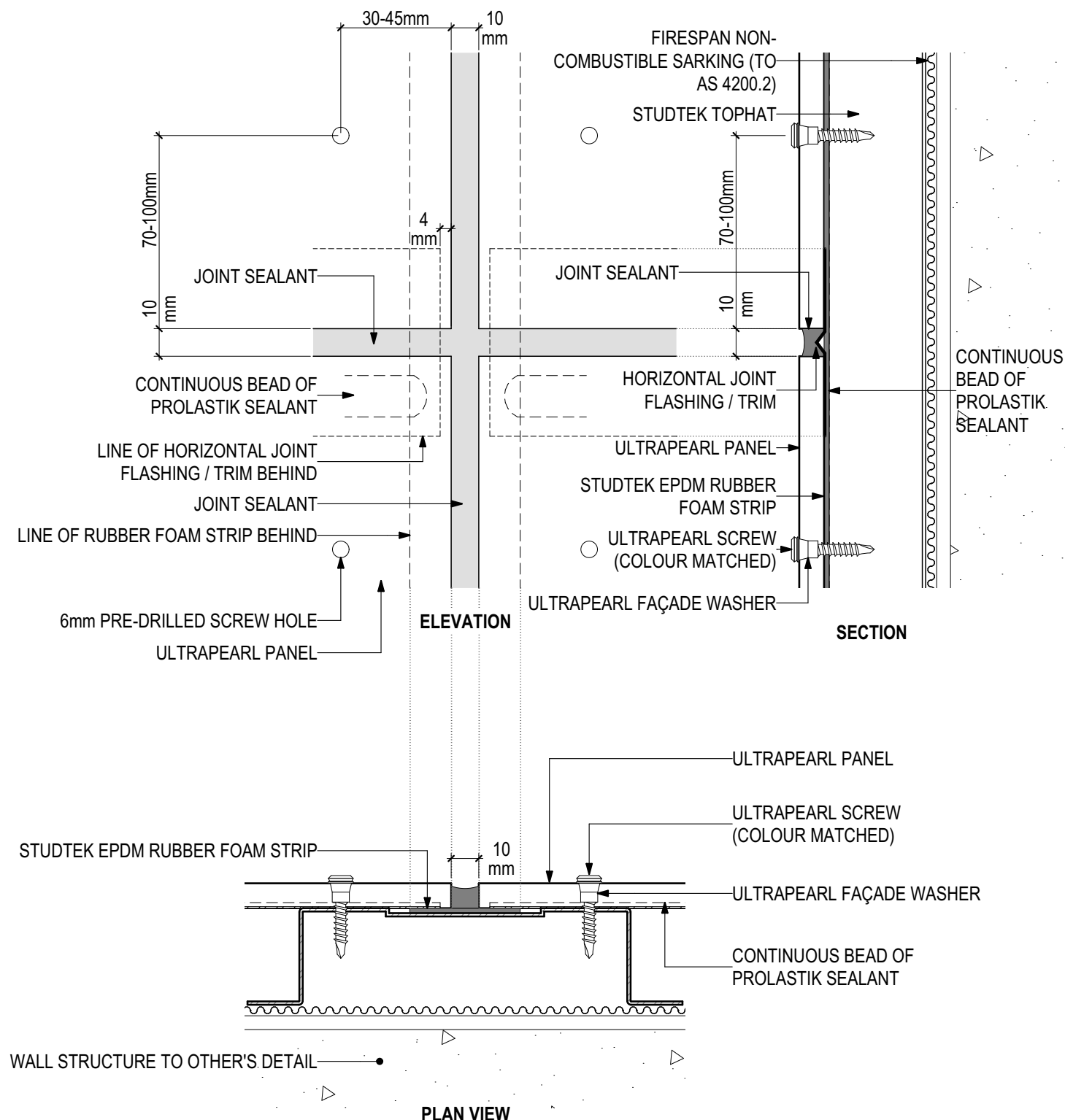
P: 08 9451 2344

F: 08 9451 8983

E: sales@bluechipgroup.net.au

ULTRAPEARL Pre-finished Fibre Cement Panel (V0120)

UP-09-VSF Visible Screw Fix (Colour-matched)



D.04 - SEALED JOINT DETAIL

SCALE 1:2

Disclaimer: These details are general design details for use as a guide. Any use is at the user's own discretion and risk. All detailing and installation should be in accordance with all the relevant codes and standards as per current NCC requirements.

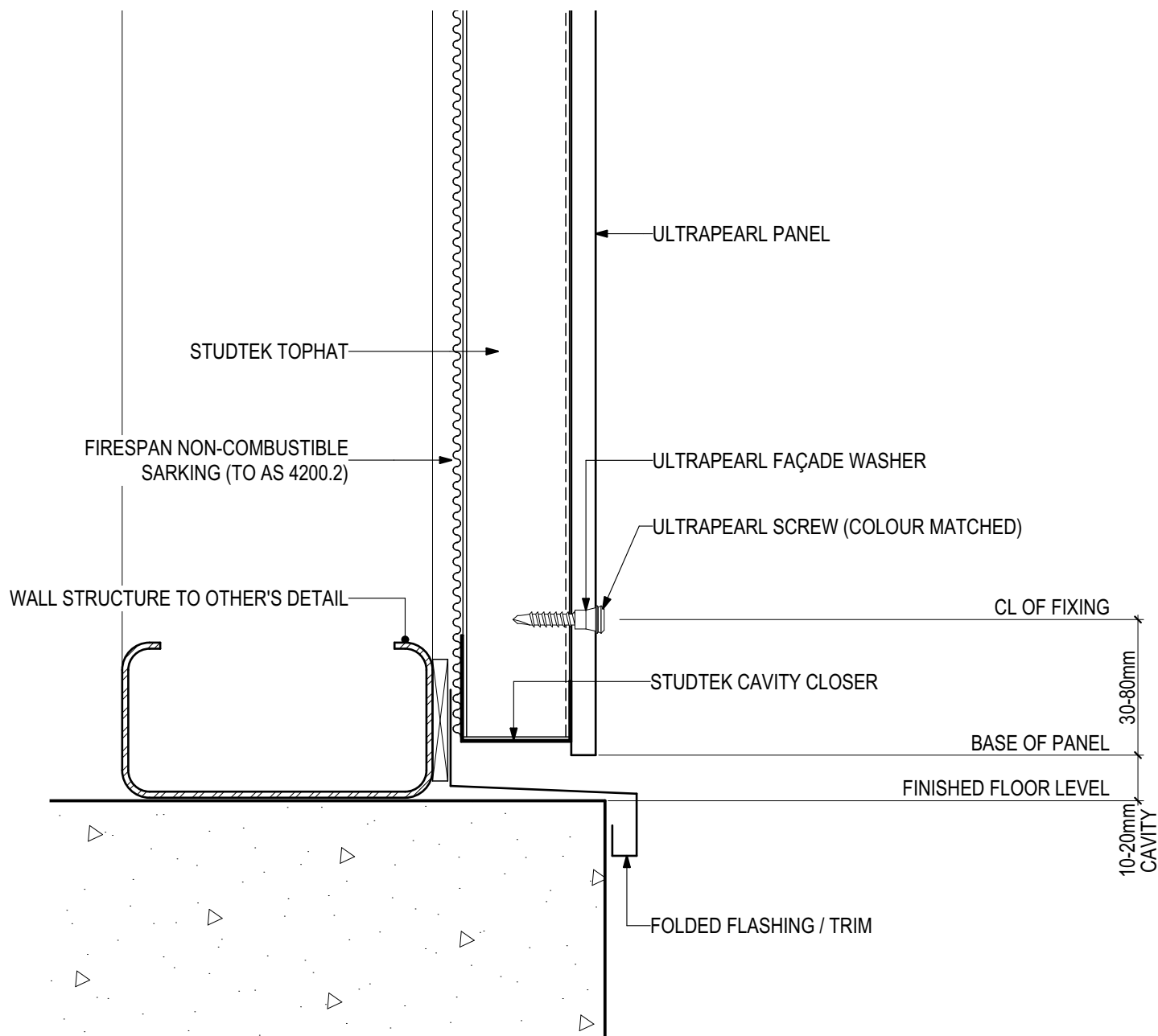
Blue Chip Group Pty Ltd

P: 08 9451 2344

F: 08 9451 8983

E: sales@bluechipgroup.net.au

ULTRAPEARL Pre-finished Fibre Cement Panel (V0120)
UP-09-VSF Visible Screw Fix (Colour-matched)



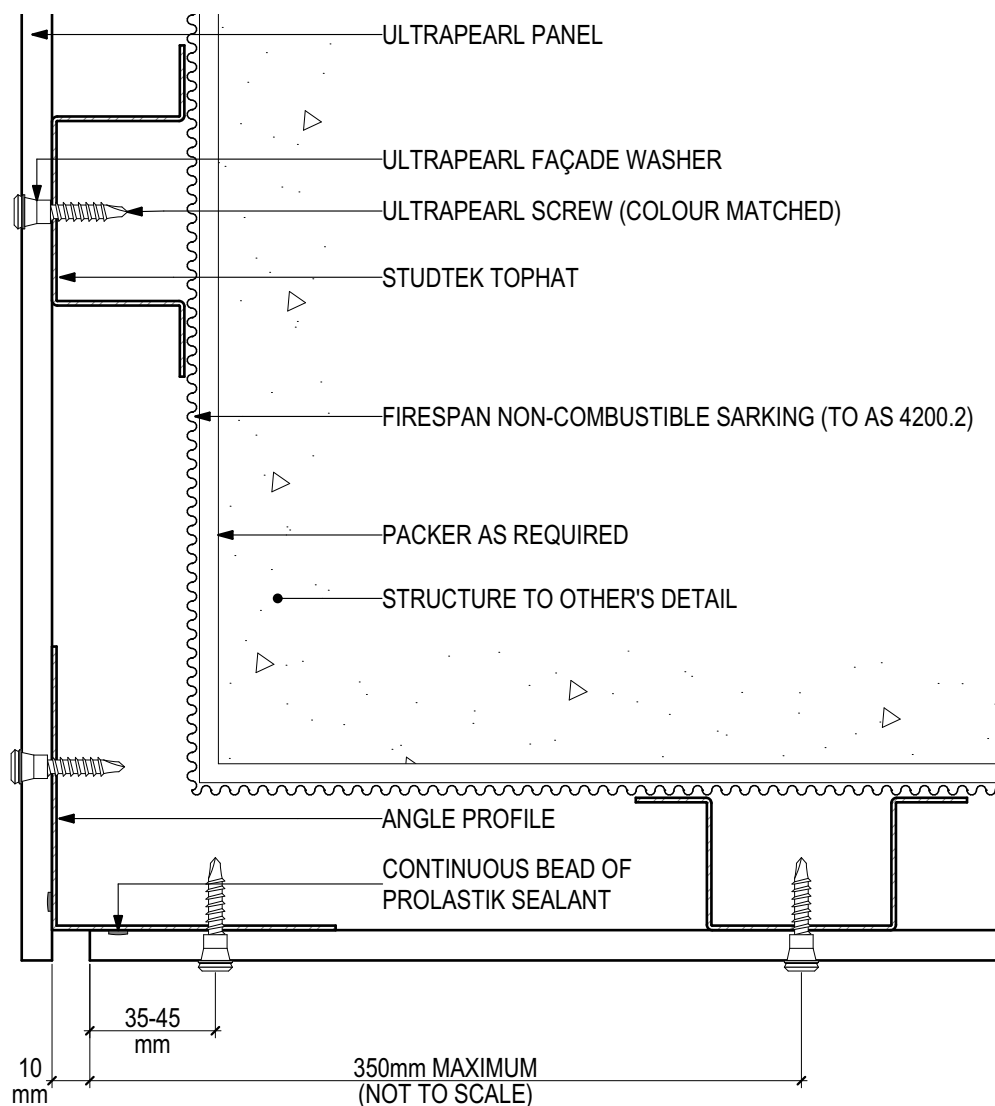
D.05 - BASE DETAIL
SCALE 1:2

Disclaimer: These details are general design details for use as a guide. Any use is at the user's own discretion and risk. All detailing and installation should be in accordance with all the relevant codes and standards as per current NCC requirements.

Blue Chip Group Pty Ltd
P: 08 9451 2344
F: 08 9451 8983
E: sales@bluechipgroup.net.au

ULTRAPEARL Pre-finished Fibre Cement Panel (V0120)

UP-09-VSF Visible Screw Fix (Colour-matched)



D.06 - EXTERNAL CORNER

SCALE 1:2

Disclaimer: These details are general design details for use as a guide. Any use is at the user's own discretion and risk. All detailing and installation should be in accordance with all the relevant codes and standards as per current NCC requirements.

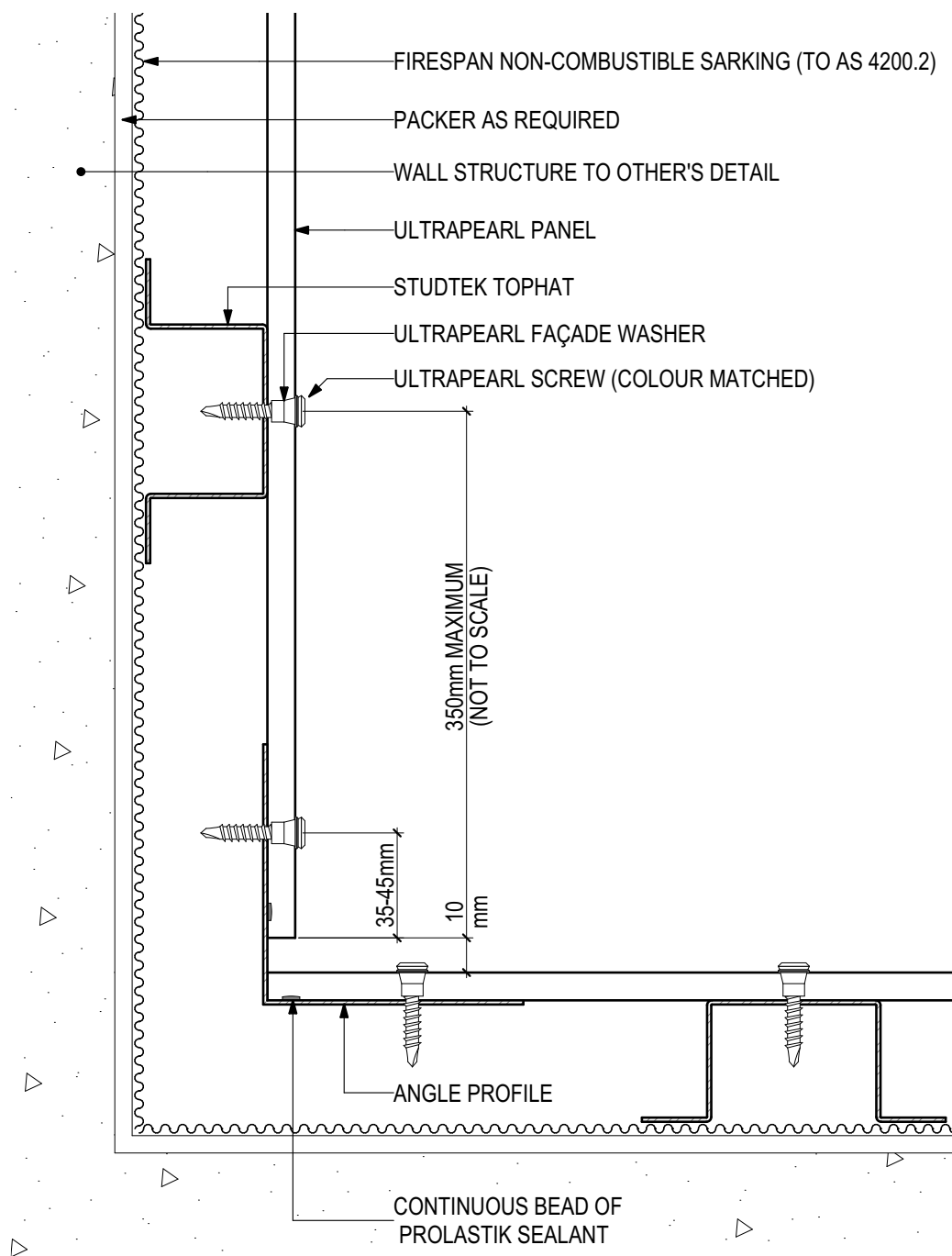
Blue Chip Group Pty Ltd

P: 08 9451 2344

F: 08 9451 8983

E: sales@bluechipgroup.net.au

ULTRAPEARL Pre-finished Fibre Cement Panel (V0120)
UP-09-VSF Visible Screw Fix (Colour-matched)

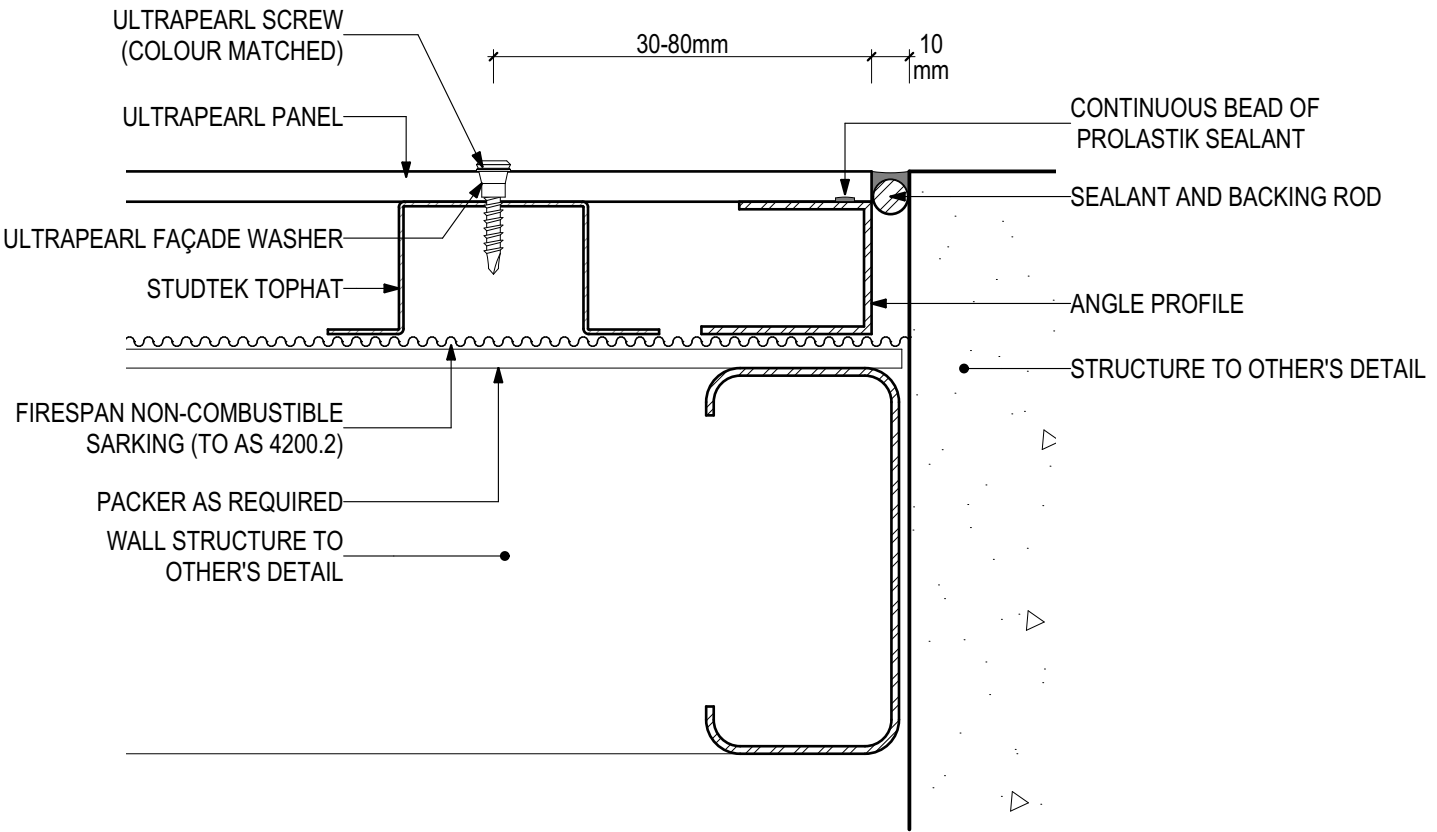


D.07 - INTERNAL CORNER
SCALE 1:2

Disclaimer: These details are general design details for use as a guide. Any use is at the user's own discretion and risk. All detailing and installation should be in accordance with all the relevant codes and standards as per current NCC requirements.

Blue Chip Group Pty Ltd
P: 08 9451 2344
F: 08 9451 8983
E: sales@bluechipgroup.net.au

ULTRAPEARL Pre-finished Fibre Cement Panel (V0120)
UP-09-VSF Visible Screw Fix (Colour-matched)

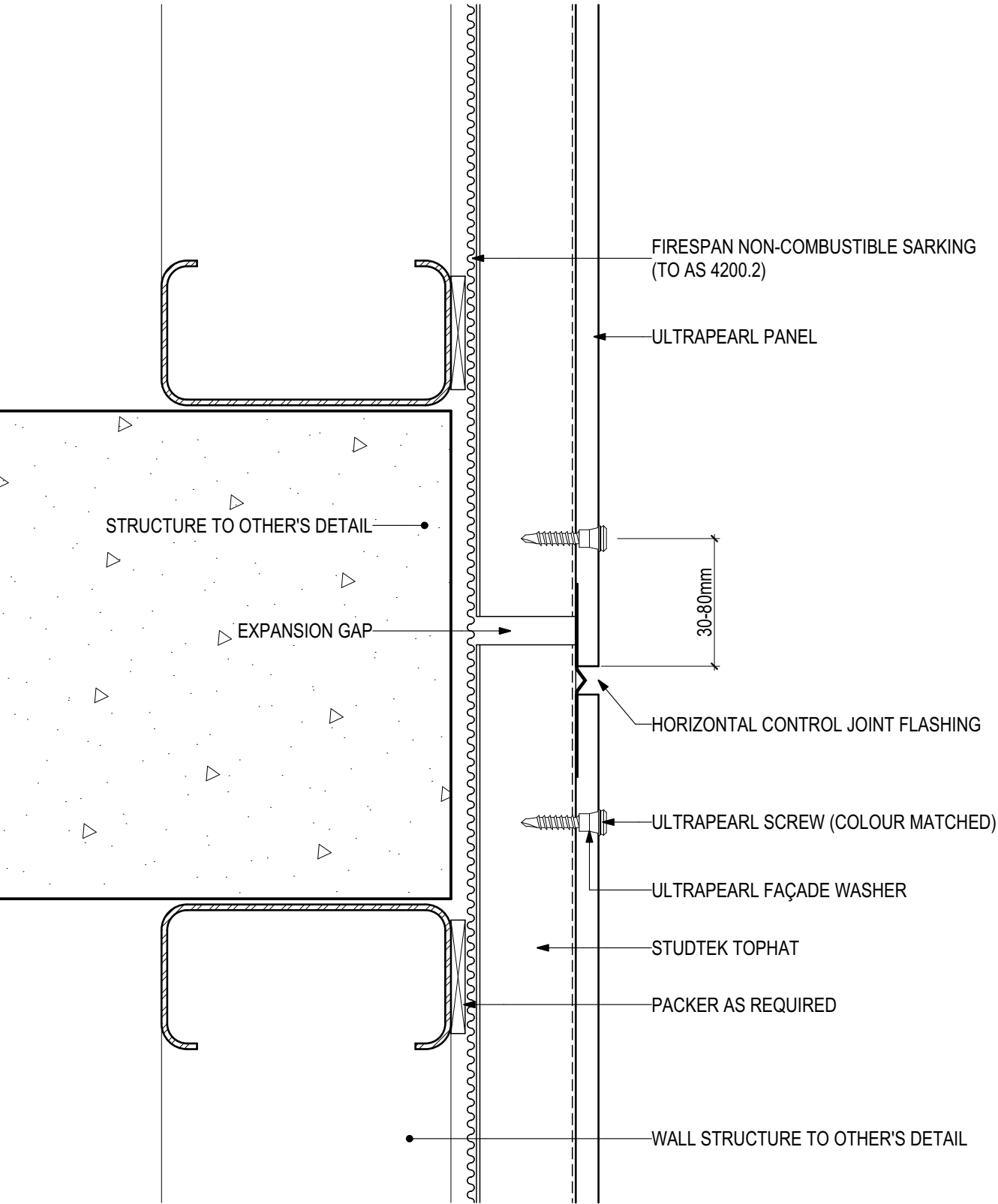


D.08 - WALL ABUTMENT
SCALE 1:2

Disclaimer: These details are general design details for use as a guide. Any use is at the user's own discretion and risk. All detailing and installation should be in accordance with all the relevant codes and standards as per current NCC requirements.

Blue Chip Group Pty Ltd
P: 08 9451 2344
F: 08 9451 8983
E: sales@bluechipgroup.net.au

ULTRAPEARL Pre-finished Fibre Cement Panel (V0120)
UP-09-VSF Visible Screw Fix (Colour-matched)

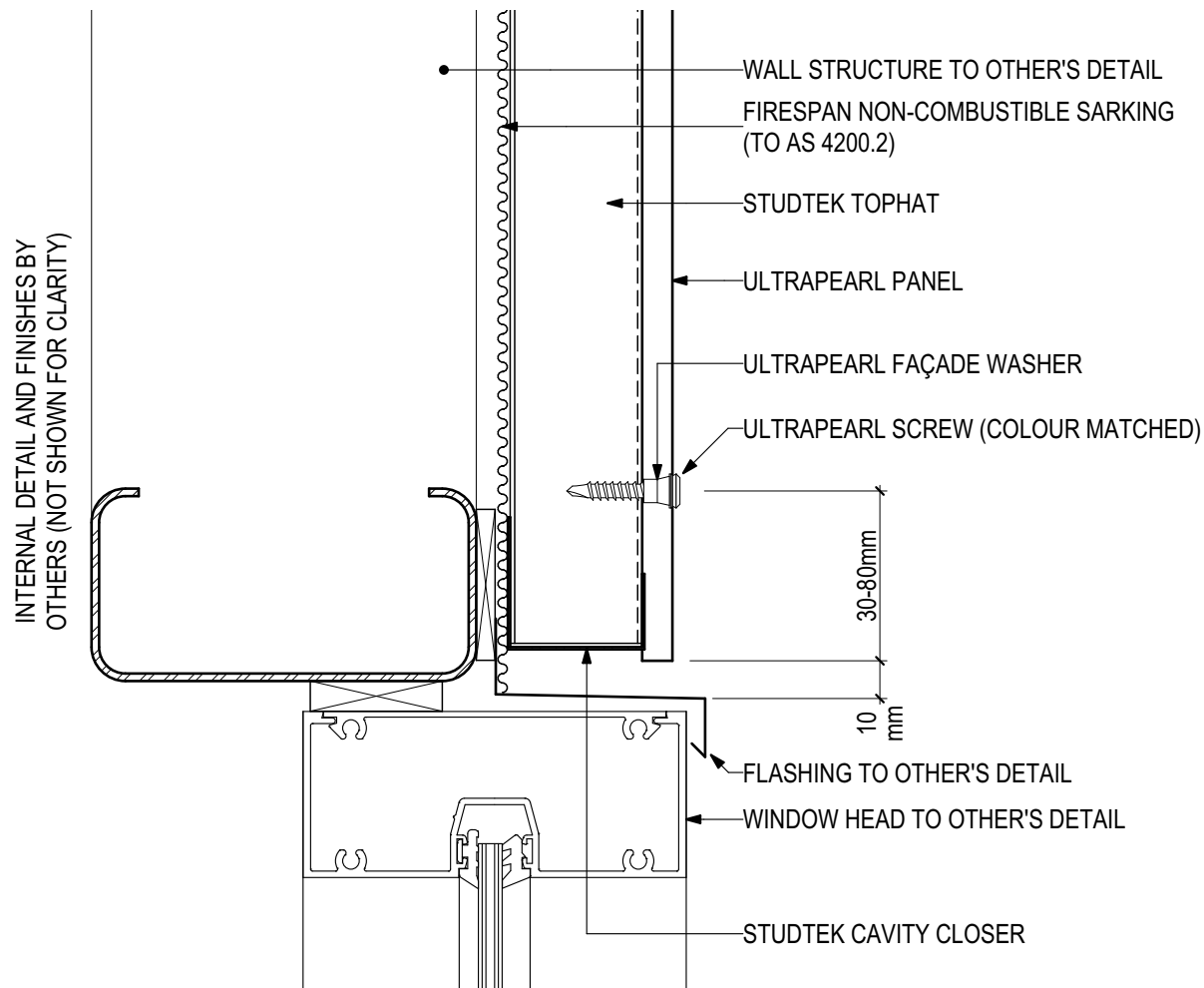


D.09 - HORIZONTAL CONTROL JOINT
SCALE 1:2

Disclaimer: These details are general design details for use as a guide. Any use is at the user's own discretion and risk. All detailing and installation should be in accordance with all the relevant codes and standards as per current NCC requirements.

Blue Chip Group Pty Ltd
P: 08 9451 2344
F: 08 9451 8983
E: sales@bluechipgroup.net.au

ULTRAPEARL Pre-finished Fibre Cement Panel (V0120)
UP-09-VSF Visible Screw Fix (Colour-matched)

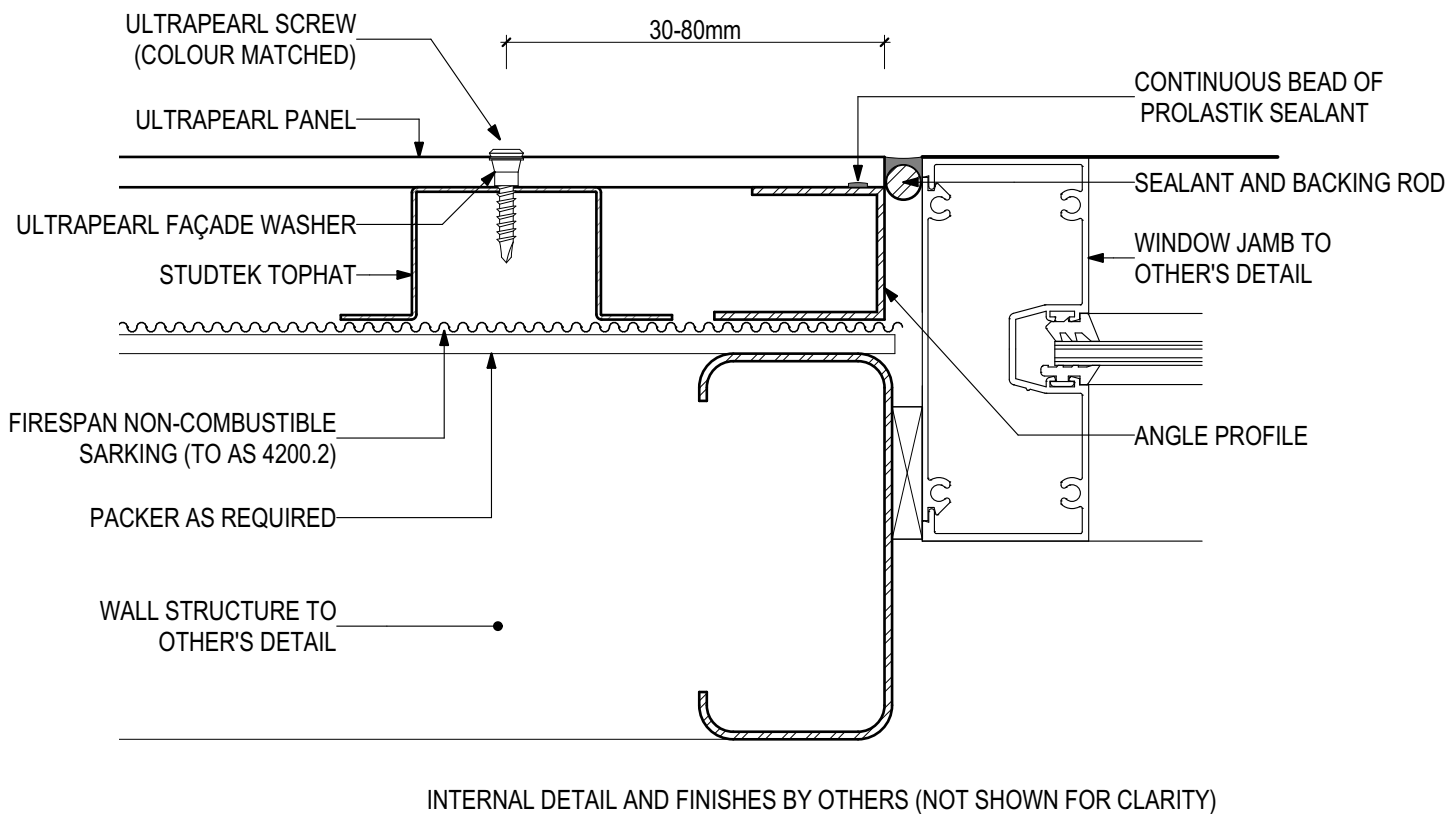


D.10 - WINDOW HEAD
SCALE 1:2

Disclaimer: These details are general design details for use as a guide. Any use is at the user's own discretion and risk. All detailing and installation should be in accordance with all the relevant codes and standards as per current NCC requirements.

Blue Chip Group Pty Ltd
P: 08 9451 2344
F: 08 9451 8983
E: sales@bluechipgroup.net.au

ULTRAPEARL Pre-finished Fibre Cement Panel (V0120)
UP-09-VSF Visible Screw Fix (Colour-matched)

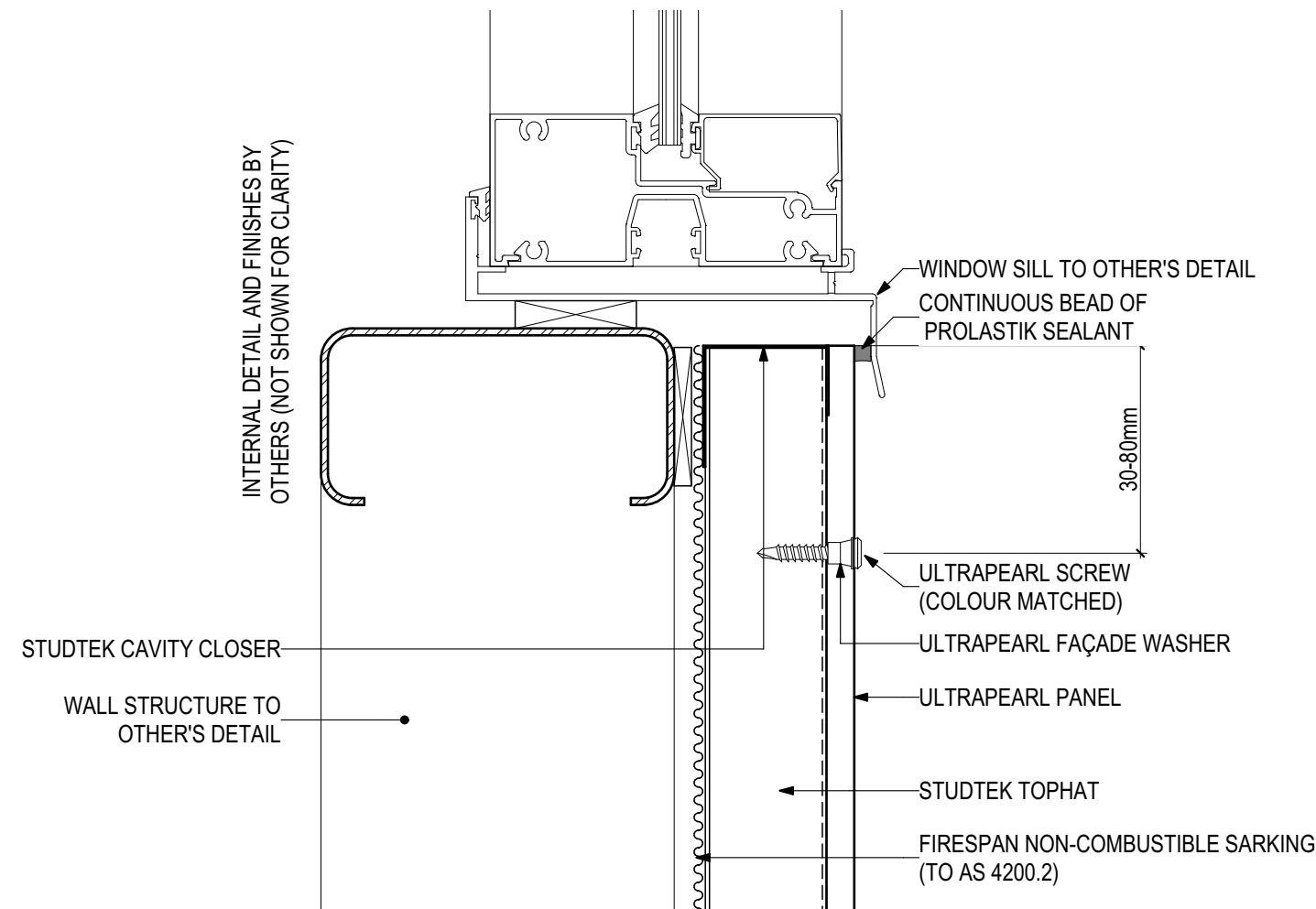


D.11 - WINDOW JAMB
SCALE 1:2

Disclaimer: These details are general design details for use as a guide. Any use is at the user's own discretion and risk. All detailing and installation should be in accordance with all the relevant codes and standards as per current NCC requirements.

Blue Chip Group Pty Ltd
P: 08 9451 2344
F: 08 9451 8983
E: sales@bluechipgroup.net.au

ULTRAPEARL Pre-finished Fibre Cement Panel (V0120)
UP-09-VSF Visible Screw Fix (Colour-matched)

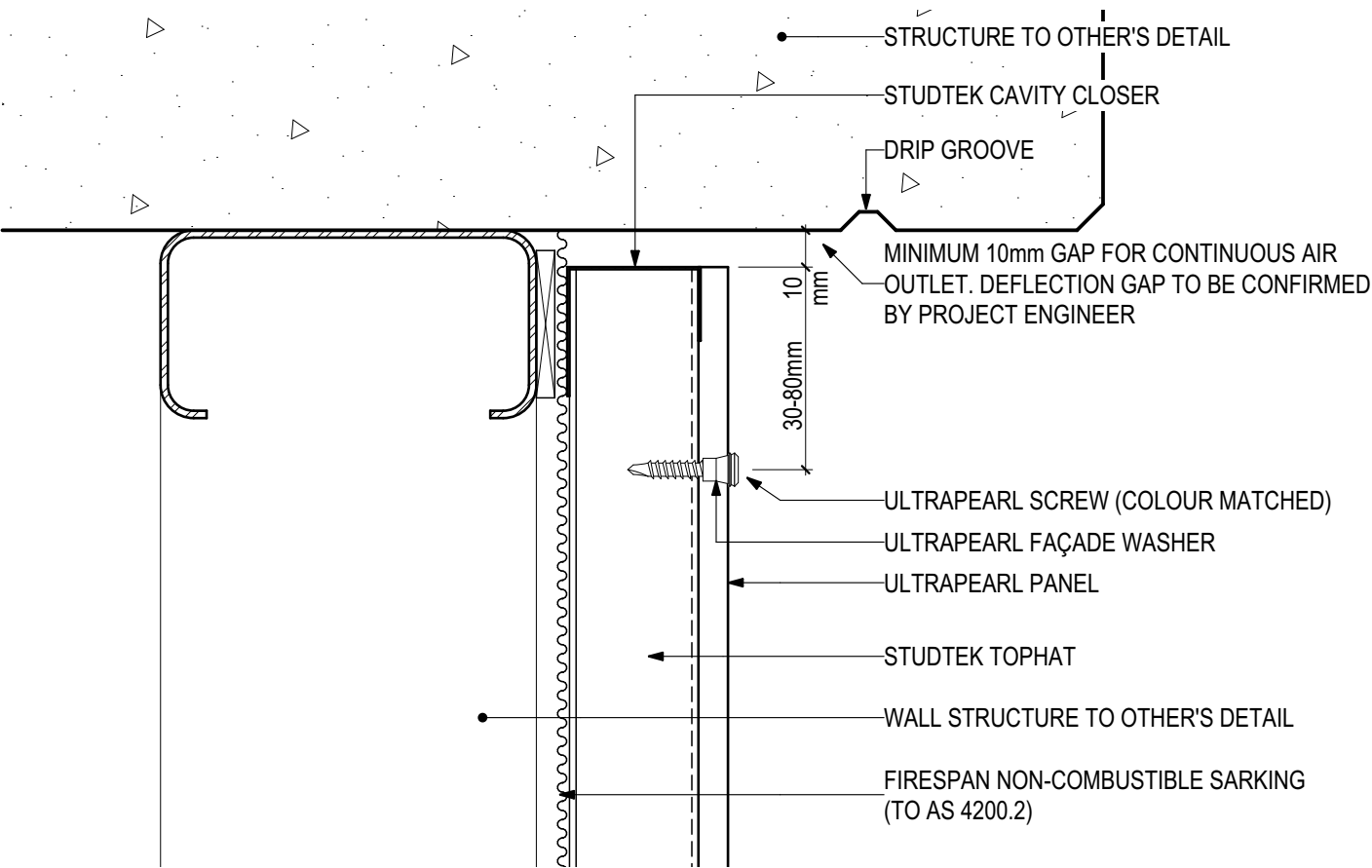


D.12 - WINDOW SILL
SCALE 1:2

Disclaimer: These details are general design details for use as a guide. Any use is at the user's own discretion and risk. All detailing and installation should be in accordance with all the relevant codes and standards as per current NCC requirements.

Blue Chip Group Pty Ltd
P: 08 9451 2344
F: 08 9451 8983
E: sales@bluechipgroup.net.au

ULTRAPEARL Pre-finished Fibre Cement Panel (V0120)
UP-09-VSF Visible Screw Fix (Colour-matched)

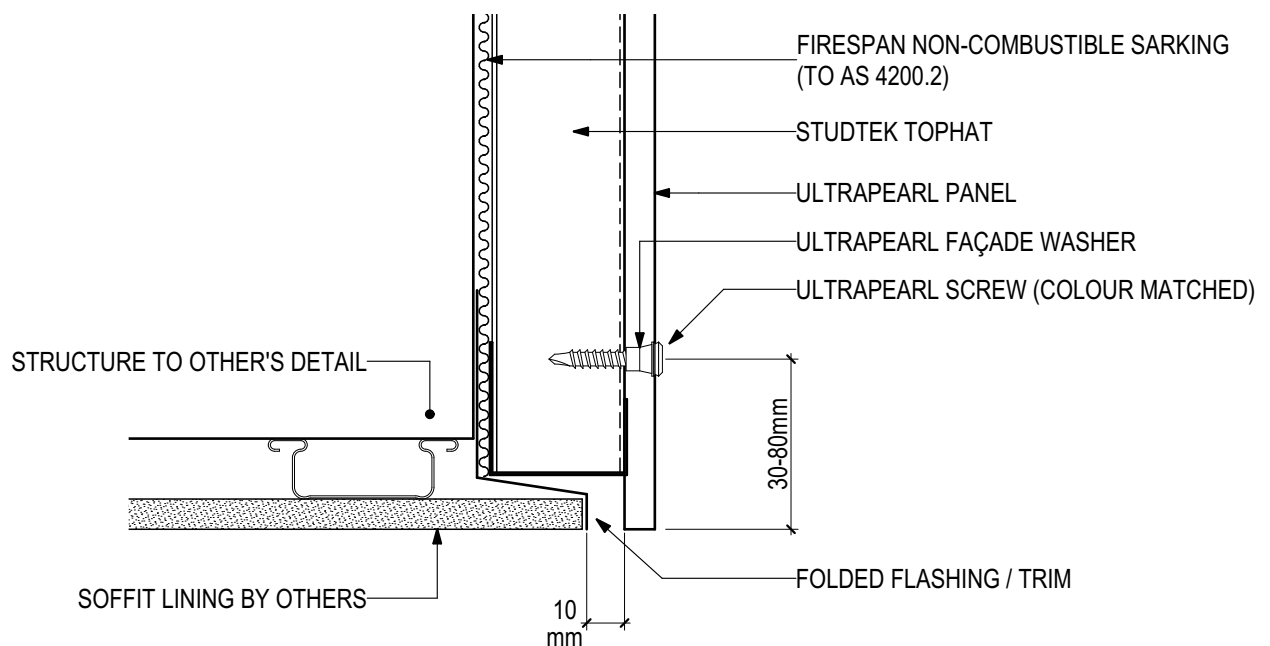


D.13 - HEAD AT SLAB JUNCTION
SCALE 1:2

Disclaimer: These details are general design details for use as a guide. Any use is at the user's own discretion and risk. All detailing and installation should be in accordance with all the relevant codes and standards as per current NCC requirements.

Blue Chip Group Pty Ltd
P: 08 9451 2344
F: 08 9451 8983
E: sales@bluechipgroup.net.au

ULTRAPEARL Pre-finished Fibre Cement Panel (V0120) UP-09-VSF Visible Screw Fix (Colour-matched)



D.14 - SOFFIT JUNCTION

SCALE 1:2

Disclaimer: These details are general design details for use as a guide. Any use is at the user's own discretion and risk. All detailing and installation should be in accordance with all the relevant codes and standards as per current NCC requirements.

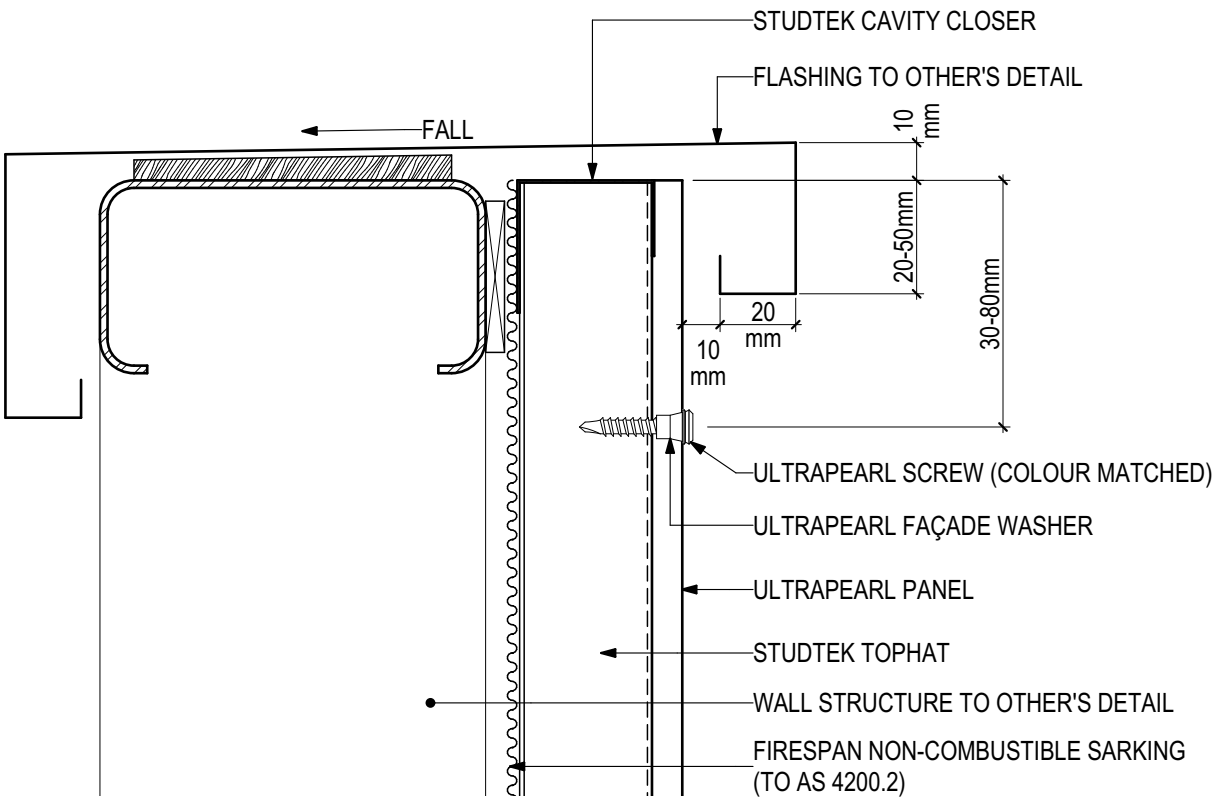
Blue Chip Group Pty Ltd

P: 08 9451 2344

F: 08 9451 8983

E: sales@bluechipgroup.net.au

ULTRAPEARL Pre-finished Fibre Cement Panel (V0120)
UP-09-VSF Visible Screw Fix (Colour-matched)



D.15 - PARAPET DETAIL
SCALE 1:2

Disclaimer: These details are general design details for use as a guide. Any use is at the user's own discretion and risk. All detailing and installation should be in accordance with all the relevant codes and standards as per current NCC requirements.

Blue Chip Group Pty Ltd
P: 08 9451 2344
F: 08 9451 8983
E: sales@bluechipgroup.net.au