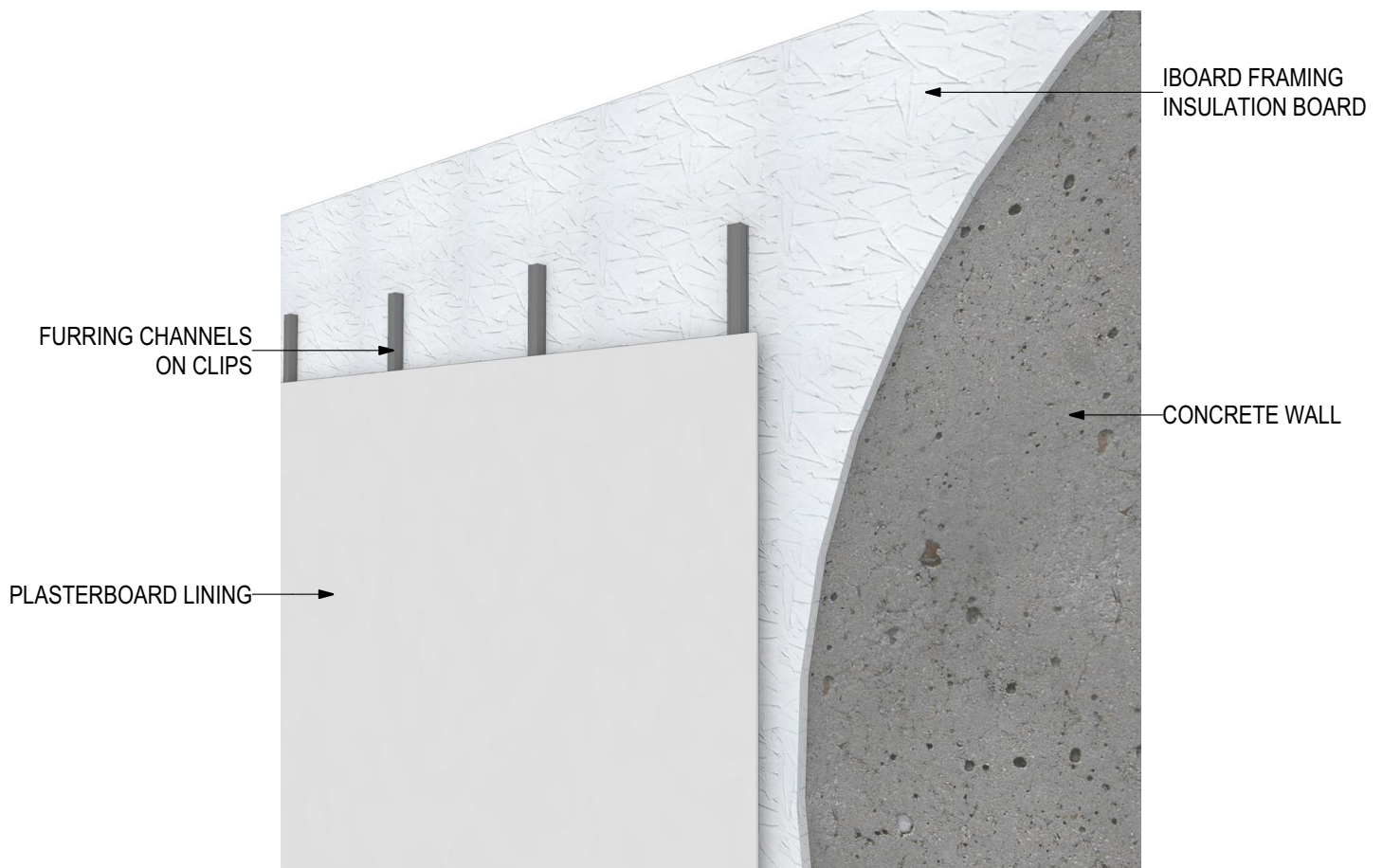


# IBOARD Frame Wall Application (V0120)

## IB-27-FRA

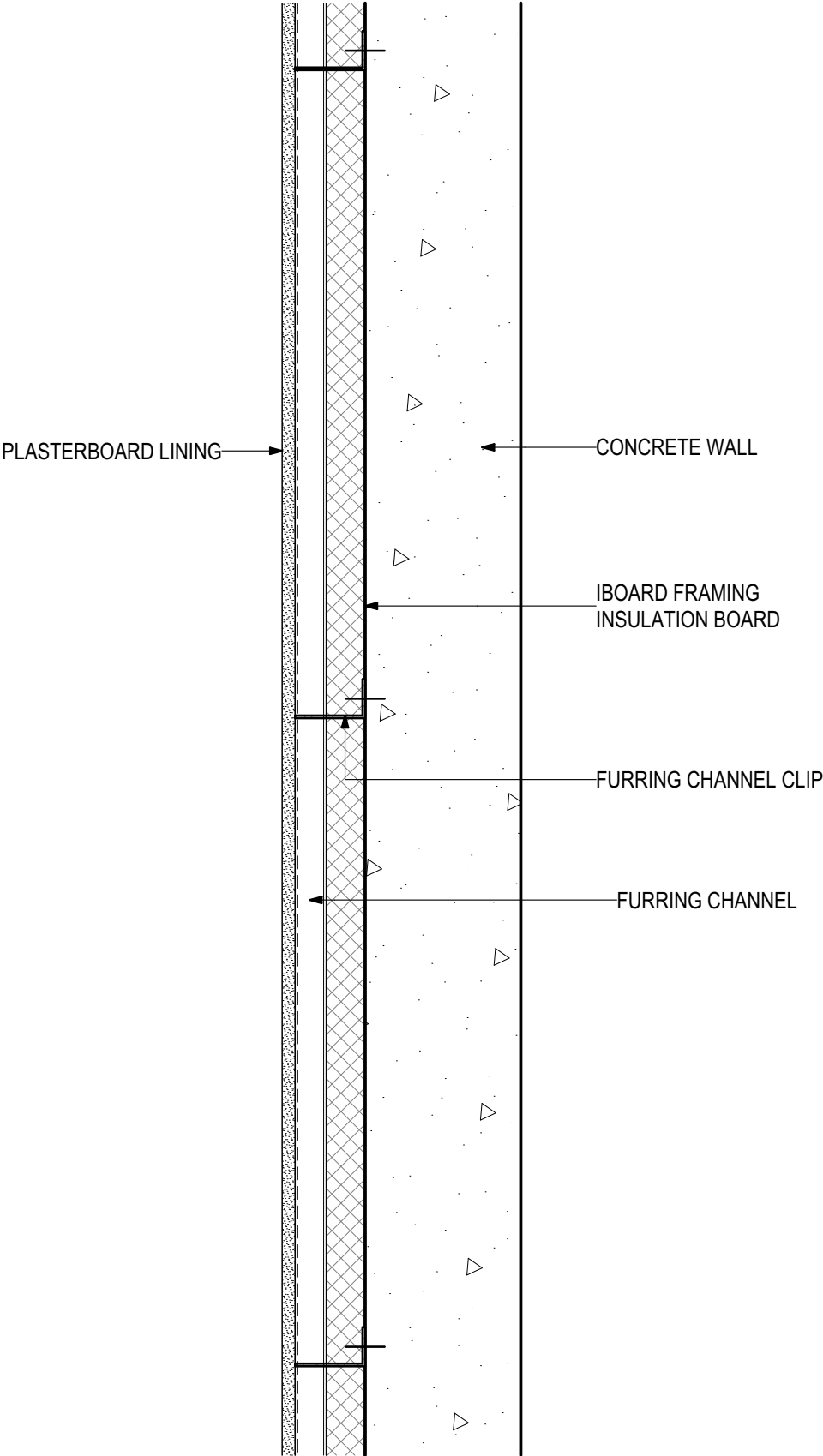


## INSTALLATION DETAILS

Disclaimer: These details are general design details for use as a guide. Any use is at the user's own discretion and risk. All detailing and installation should be in accordance with all the relevant codes and standards as per current NCC requirements.

**Blue Chip Group Pty Ltd**  
P: 08 9451 2344  
F: 08 9451 8983  
E: [sales@bluechipgroup.net.au](mailto:sales@bluechipgroup.net.au)

**IBOARD Frame Wall Application (V0120)**  
**IB-27-FRA**



**D.01 - FRAME WALL DETAIL**  
SCALE 1:5

Disclaimer: These details are general design details for use as a guide. Any use is at the user's own discretion and risk. All detailing and installation should be in accordance with all the relevant codes and standards as per current NCC requirements.

**Blue Chip Group Pty Ltd**  
P: 08 9451 2344  
F: 08 9451 8983  
E: sales@bluechipgroup.net.au