



BLUECHIP

Insulation Products

IBOARD G1

Product Brochure

[www.bluechipgroup.net.au](http://www.bluechipgroup.net.au)



# IBOARD G1

## Group 1 Insulated Soffit Lining

### Description

IBOARD G1 insulated soffit lining comprises of a Group 1 rated 6mm fibre cement facer bonded to a concealed rigid insulation board composed of a closed-cell thermoset polyisocyanurate foam. Tested in accordance with relevant AS/NZ standards, IBOARD G1 is compliant for use in all soffit applications in accordance with NCC 2022. Providing higher R-values from less thickness, IBOARD G1 allows increased clearance height within car parks while still meeting thermal requirements making it the safest and most practical option for all concrete soffit and under-slab applications.

### Product Benefits



#### GROUP 1 FIRE RATING\*

IBOARD G1 insulated soffit lining has a non-combustible fibre cement facer which achieves a Group 1 fire rating in accordance with AS 5637 for superior safety and compliance in all under slab soffit applications.



#### ZERO FORMALDEHYDE

IBOARD G1 soffit insulation contains zero traces of formaldehyde and it is fibre-free making it non-irritant to the skin, non-allergenic and safer compared to other products.



#### UNLIMITED COLOURS

IBOARD G1 soffit insulation has an attractive light grey fibre cement finish which can be left untreated, painted insitu, or supplied prefinished in unlimited custom colours to your selection.



#### AUSTRALIAN FIRE TESTING

IBOARD G1 insulated soffit lining has NATA accredited testing to relevant Australian fire standards and it's Group 1 fire rating means it is compliant with NCC 2022 for all lining applications.



#### SUPERIOR AGEING PERFORMANCE

Due to its outstanding resistance to moisture and excellent compressive strength, IBOARD G1 soffit insulation offers much better thermal ageing performance than other products.



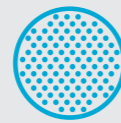
#### ENVIRONMENTALLY FRIENDLY

IBOARD G1 soffit insulation is manufactured in Europe under strict quality control using only CFC/HCFC free blowing agents which have Zero Ozone Depletion Potential (ODP).



#### 100% NON-CORROSIVE

Unlike some other insulation products, IBOARD G1 core material is 100% non-corrosive and will not cause corrosion issues if it comes in contact with structural steel or fixings.



#### MICRO CELL TECHNOLOGY

IBOARD G1 has a much finer cell structure with extremely low water absorption compared to other products (<0.6%) so its R-value is retained long-term and it is rot and mould proof.

### Availability

CODE	R-VALUE	DESCRIPTION	LEAD TIME	MOQ
IBG362412	R1.38	IBOARD 36mm G1 Insulation, 2400 x 1200mm	1-2 Weeks	50 Boards
IBG462412	R1.84	IBOARD 46mm G1 Insulation, 2400 x 1200mm	1-2 Weeks	50 Boards
IBG562412	R2.29	IBOARD 56mm G1 Insulation, 2400 x 1200mm	1-2 Weeks	50 Boards
IBG662412	R2.75	IBOARD 66mm G1 Insulation, 2400 x 1200mm	1-2 Weeks	50 Boards
IBG762412	R3.20	IBOARD 76mm G1 Insulation, 2400 x 1200mm	1-2 Weeks	50 Boards
IBG862412	R3.66	IBOARD 86mm G1 Insulation, 2400 x 1200mm	1-2 Weeks	50 Boards
IBG962412	R4.11	IBOARD 96mm G1 Insulation, 2400 x 1200mm	1-2 Weeks	50 Boards
IBG1062412	R4.57	IBOARD 106mm G1 Insulation, 2400 x 1200mm	1-2 Weeks	50 Boards

### Technical Data

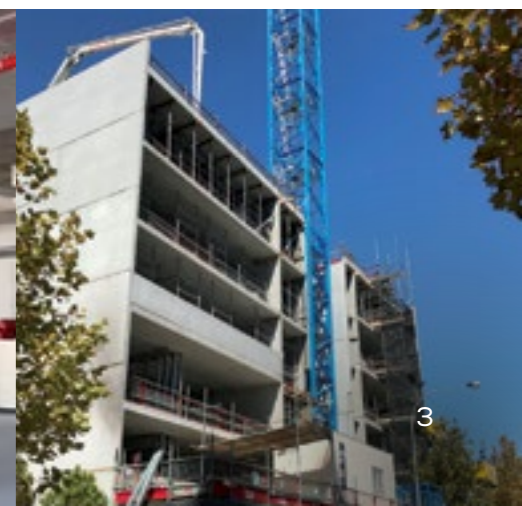
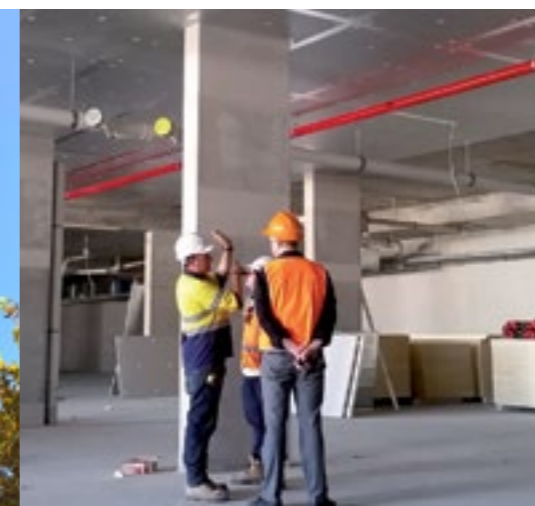
TEST ITEM	STANDARD	RESULT
Thermal Conductivity (Insulation)	ASTM C518	0.022 W/mK*
Thermal Conductivity (Fibre Cement)	ASTM C518	0.23 W/mK*
Group Rating	AS 5637	Group 1**
Average Specific Extinction Area	m <sup>2</sup> /kg	<250**
Smoke Growth Rate (SMOGRA)	m <sup>2</sup> /s2x1000	<100**
Spread of Flame Index	AS 1530.3	0***
Smoke Developed Index	AS 1530.3	2***
Tensile Strength Perpendicular to Faces	EN 1607	80 kPa
Compressive Strength	EN 826	>110 kPa
Compressive Strength at 10% Deformation	EN 826	>150 kPa

\*Material R-values are calculated based on the insulation thickness at 0.022 W/mK in addition to the 6mm fibre cement at 0.23W/mK. \*\*The AS 5637 testing and Group 1 rating applies to the exposed fibre cement facer, being the wall or ceiling lining, in accordance with NCC 2022 requirements. \*\*\*The AS 1530.3 testing applies to the PIR insulation board, being a concealed insulation material, in accordance with NCC 2022 requirements.

\*Group 1 fire rating applies to the exposed fibre cement facing in accordance with AS 5637 and NCC 2022 requirements.

### INSTALL & TECHNICAL

For installation and technical information, scan the QR code and view 'Downloads' tab.





We've Got It Covered



V0722



BLUECHIP  
Metal Cladding



BLUECHIP  
Natural Cladding



BLUECHIP  
Timber Cladding



BLUECHIP  
Decking Products



BLUECHIP  
Insulation Products



BLUECHIP  
Facade Systems

Blue Chip Group Pty Ltd

SYDNEY | MELBOURNE | BRISBANE | PERTH

P 1300 945 123

E [sales@bluechipgroup.net.au](mailto:sales@bluechipgroup.net.au)

[www.bluechipgroup.net.au](http://www.bluechipgroup.net.au)

DISCLAIMER No information or advice contained in this publication is binding in any way shape or form and is provided on a without prejudice basis. All photographs and colour swatches are indicative only. All dimensions are nominal and all product data and specifications are subject to change without notice. All pricing, sales, communications and transactions are subject to Blue Chip Group's terms of trading which are available on request.