

TRI MO TRIMOTERM



VERTICAL FAÇADE SYSTEM TRIMOTERM FTV - **DETAILS**

Descriptions of details, and other information in this document, are only provided to illustrate the system(s) of Trimoterm cladding products and applications.

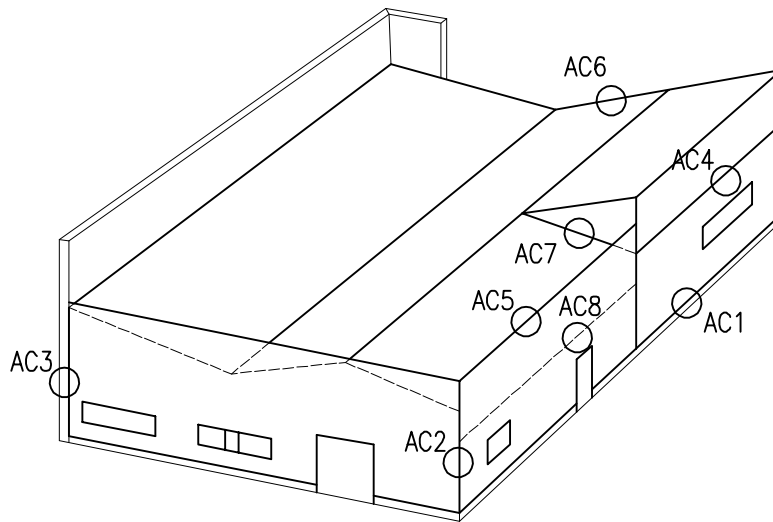
Each user of such information is fully responsible for the incorporation of this advisory information in its design.

Trimoterm assumes no liability whatsoever for any damages incurred by you resulting from errors in or omissions from the information included herein.

Care has been taken to ensure that information contained in the document are accurate, but Trimoterm, including its subsidiaries, does not accept responsibility or liability for errors in information.

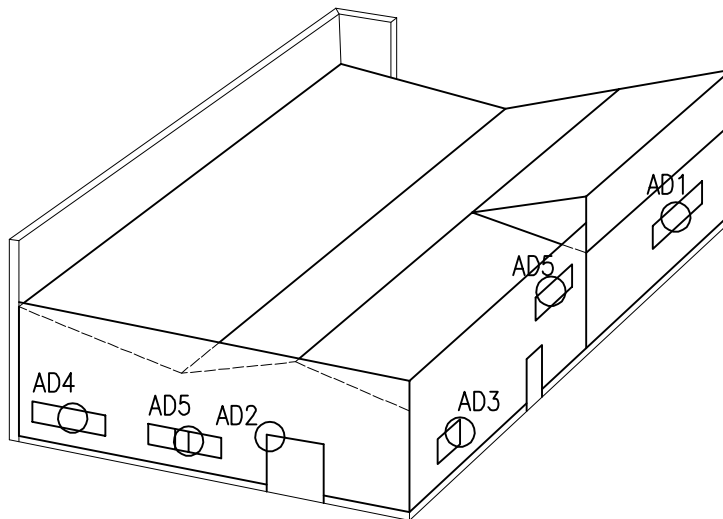
VERTICAL FACADE SYSTEM

1



AC – VERTICAL FACADE SYSTEM WITH TRIMOTERM FTV FIREPROOF PANELS

- AC1 – DRIP DETAIL
- AC2 – EXTERNAL CORNER
- AC3 – PANEL TO WALL JOINT
- AC4 – PANEL TO PANEL JOINT
- AC5 – PARAPET WITH A SUBSTRUCTURE
- AC6 – GABLE DETAIL
- AC7 – CONNECTION OF FACADE ABOVE THE ROOF
- AC8 – FIXING – INTERMEDIATE SUPPORT



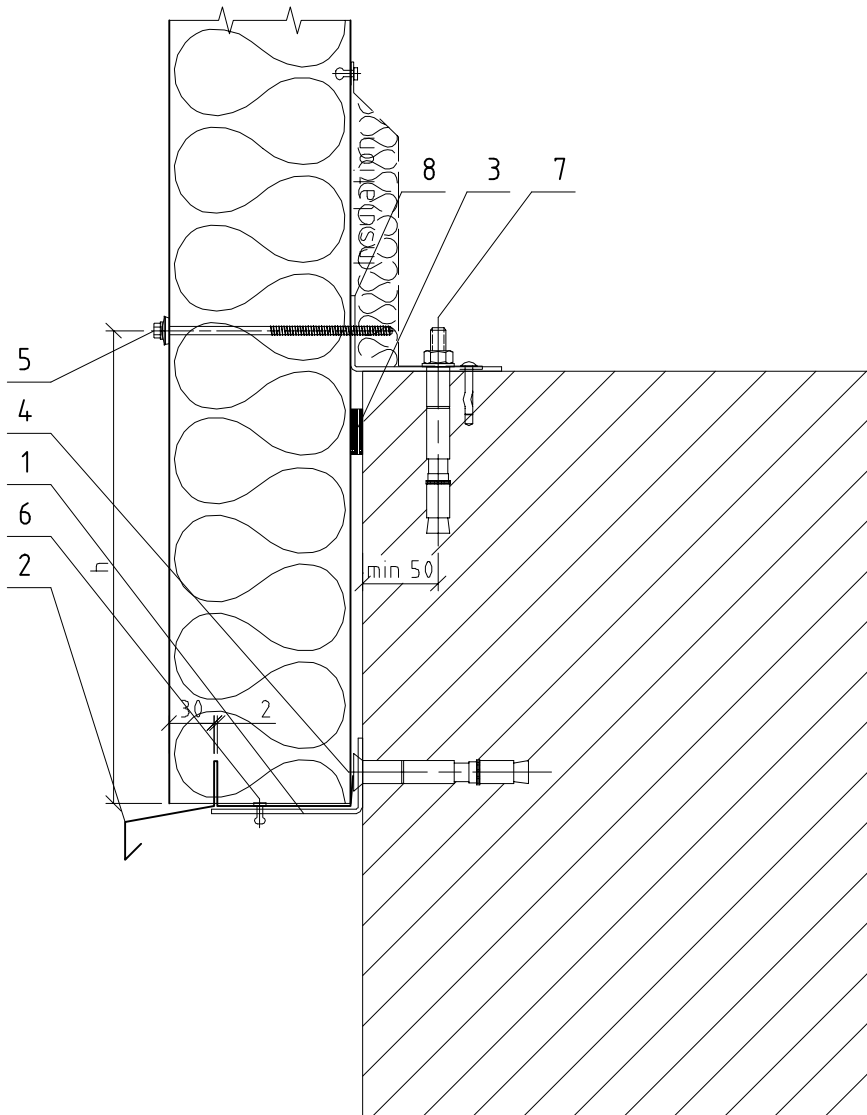
AD – VERTICAL FACADE SYSTEM WITH TRIMOTERM FTV FIREPROOF PANELS

- AD1 – INSTALLATION OF A WINDOW LARGER THAN THE PANEL WIDTH
- AD2 – DOOR OPENING WITH A SUBSTRUCTURE
- AD3 – INSTALLATION OF DOUBLE COPYLITE
- AD4 – INSTALLATION OF POLYCARBONATE
- AD5 – INSTALLATION OF SHADES

Subject of detail are only positioned elements!

All details are the property of Trimoterm®

AC+AD



NOTE:

- $h \leq 600$ or in accordance with the static calculation.

Item	Code	Description
1	N014	Panel support – profile
2	O159	Drip flashing
3	T016	Sealing tape 2/10x15
4	S001	Anchor bolt ____x____ (min. 1 pc/m)
5	V027	Self-tapping screw ____x____
6	K002	Blind rivet 4x10 (1 pc/m)
7	N081	Anchor bolt ____x____ (min. 1 pc/m)
8	N019	Support profile

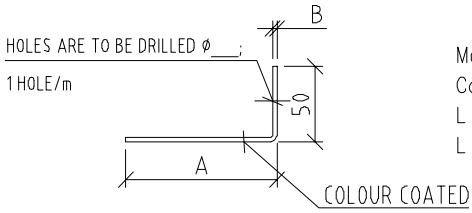
Subject of detail are only positioned elements!

All details are the property of Trimo©

DRIP DETAIL

AC1/1

ITEM 1 | N014 | Panel support – profile

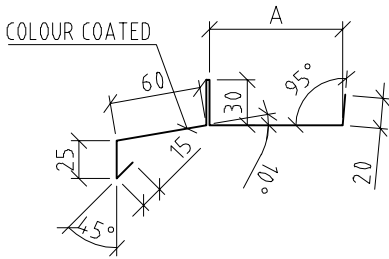


Material: galvanised steel sheet B mm

Colour _____
 L = _____ PIECE _____
 L = _____ PIECE _____

Panel thickness S	50	60	80	100	120	133	150	172	200	240
A	30	40	60	80	100	113	130	152	180	220
B	2	2	2	2	2	2	3	3	3	3
Steel sheet width	76	86	106	126	146	159	174	196	224	264

ITEM 2 | O159 | Drip flashing

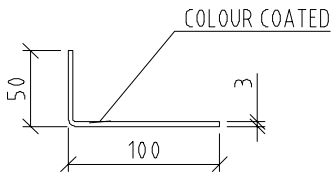


Material: galvanised steel sheet 0,6 mm

Colour _____
 L = _____ PIECE _____
 L = _____ PIECE _____

Panel thickness S	50	60	80	100	120	133	150	172	200	240
A	/	28	48	68	88	101	118	140	168	208
Steel sheet width	/	208	228	248	268	281	298	320	348	388

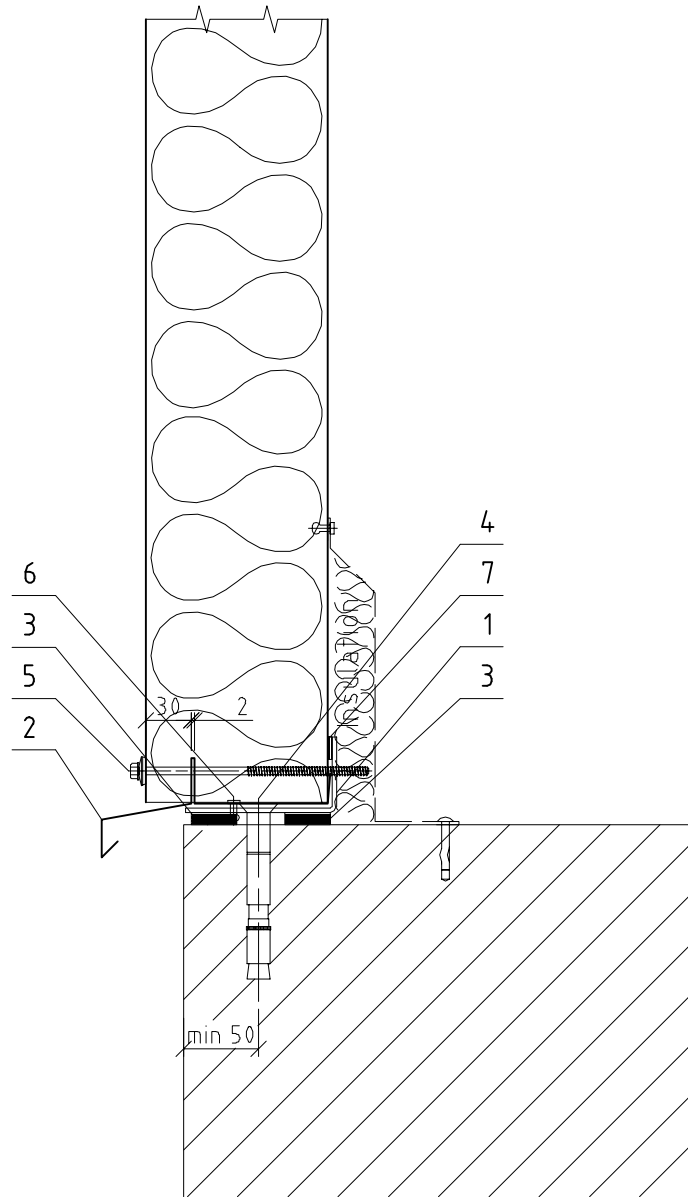
ITEM 8 | N019 | Support profile



Material: galvanised steel sheet 3 mm

Colour _____
 L = _____ PIECE _____
 L = _____ PIECE _____

Steel sheet width ...	144
-----------------------	-----



Item	Code	Description
1	N014	Panel support profile
2	O159	Drip flashing
3	T16	Sealing tape 2/10x15
4	S001	Self-tapping screw ____x____ (min. 1 pc/m)
5	V027	Self-tapping screw ____x____
6	K002	Blind rivet 4x10 (4 pcs/m)
7	T002	Sealing tape 3x15

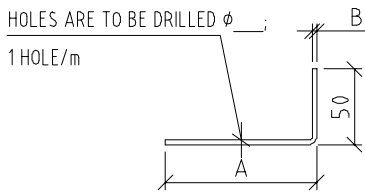
Subject of detail are only positioned elements!

All details are the property of Trimo®

DRIP DETAIL

AC1/2

ITEM 1 | N014 | Panel support – profile

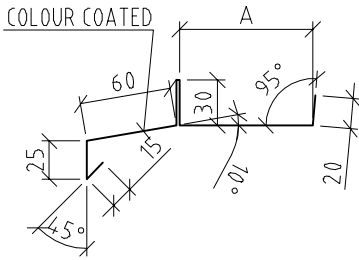


Material: galvanised steel sheet B mm

L = _____ PIECE _____
 L = _____ PIECE _____

Panel thickness S	50	60	80	100	120	133	150	172	200	240
A	30	40	60	80	100	113	130	152	180	220
B	2	2	2	2	2	2	3	3	3	3
Steel sheet width	76	86	106	126	146	159	174	196	224	264

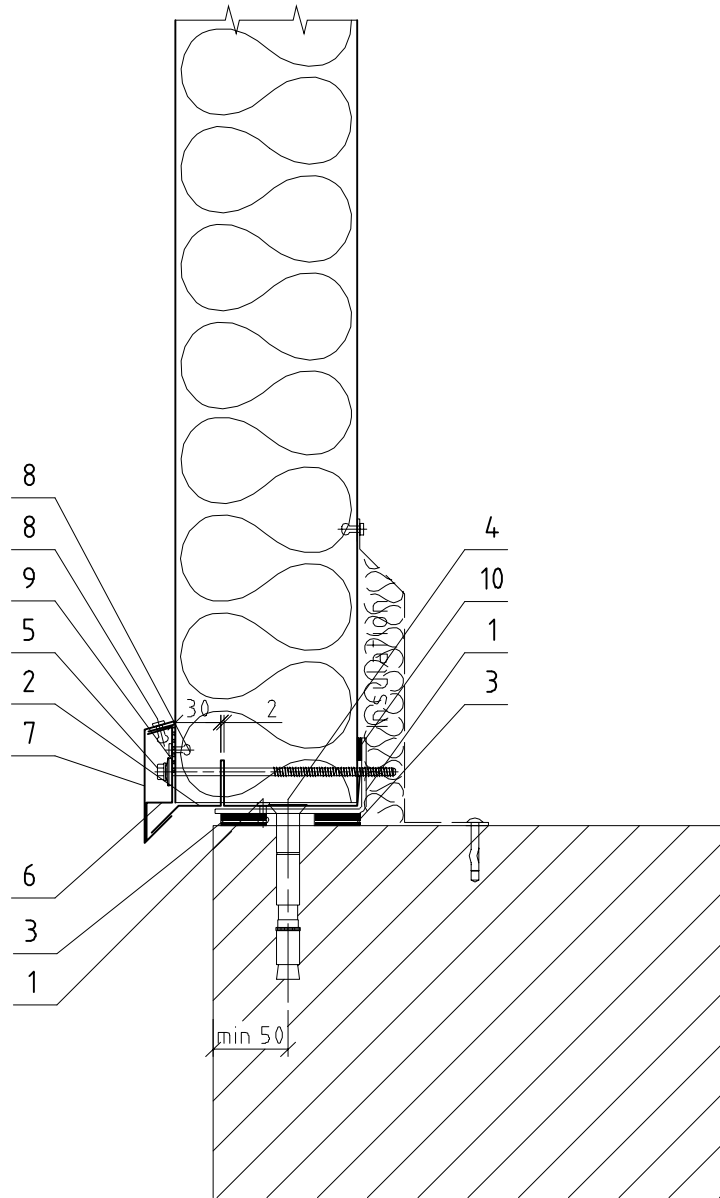
ITEM 2 | O159 | Drip flashing



Material: galvanised steel sheet 0,6 mm

Colour _____
 L = _____ PIECE _____
 L = _____ PIECE _____

Panel thickness S	50	60	80	100	120	133	150	172	200	240
A	/	28	48	68	88	101	118	140	168	208
Steel sheet width	/	208	228	248	268	281	298	320	348	388

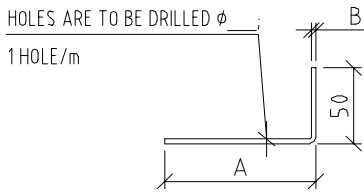


Item	Code	Description
1	N014	Panel support profile
2	O118	Drip flashing
3	T016	Sealing tape 2/10x15
4	S001	Anchor bolt ____x____ (min. 1 pc/m)
5	V027	Self-tapping screw ____x____
6	O078	Flashing support
7	O076	Drip flashing mask
8	K002	Blind rivet 4x10 (4 pcs/m)
9	T004	Sealing tape 2x47x100 (under the screw)
10	T002	Sealing tape 3x15

Subject of detail are only positioned elements!

All details are the property of Trimo©

ITEM 1 | N014 | Panel support – profile

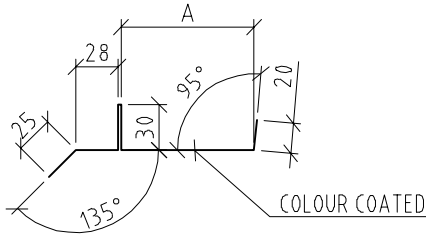


Material: galvanised steel sheet B mm

L = _____ PIECE _____
L = _____ PIECE _____

Panel thickness S	50	60	80	100	120	133	150	172	200	240
A	30	40	60	80	100	113	130	152	180	220
B	2	2	2	2	2	2	3	3	3	3
Steel sheet width	76	86	106	126	146	159	174	196	224	264

ITEM 2 | O118 | Drip flashing

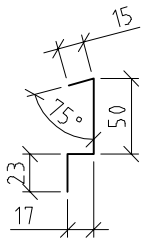


Material: galvanised steel sheet 0,6 mm

Colour _____
L = _____ PIECE _____
L = _____ PIECE _____

Panel thickness S	50	60	80	100	120	133	150	172	200	240
A	18	28	48	68	88	101	118	140	168	208
Steel sheet width	150	160	180	200	220	233	250	272	300	340

ITEM 6 | O078 | Flashing support

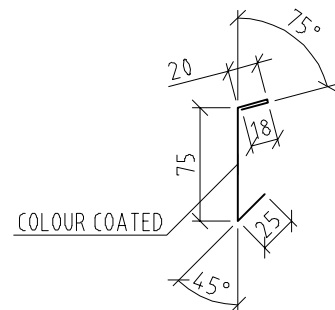


Material: galvanised steel sheet 0,7 mm

L = _____ PIECE _____
L = _____ PIECE _____

Steel sheet width ...	105
-----------------------	-----

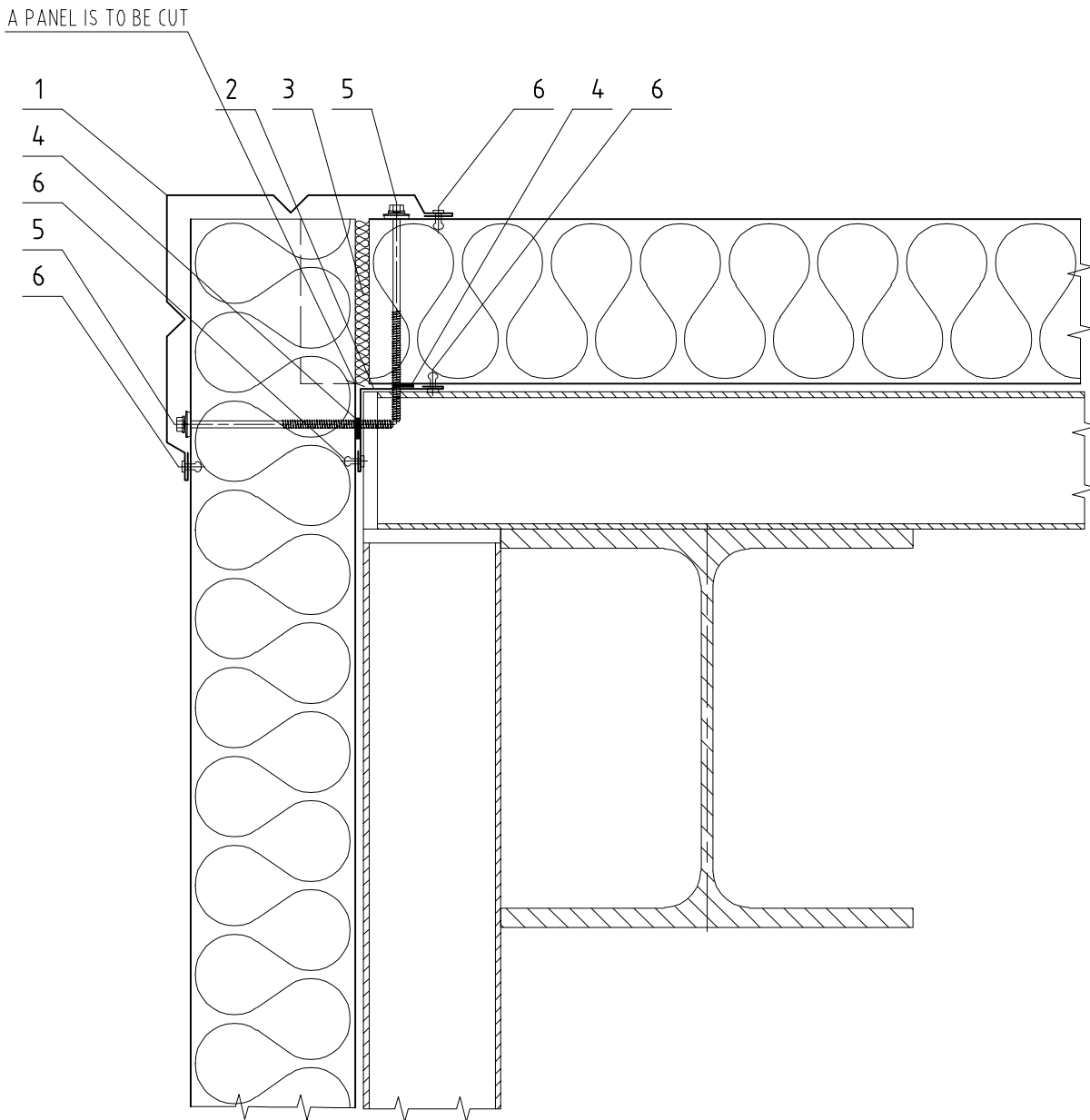
ITEM 7 | O076 | Drip flashing mask



Material: galvanised steel sheet 0,6 mm

Colour _____
L = _____ PIECE _____
L = _____ PIECE _____

Steel sheet width ...	138
-----------------------	-----



Item	Code	Description
1	O164	External corner flashing
2	O167	Internal corner flashing
3	W001	Thermal insulation
4	T002	Sealing tape 3x15
5	V027	Self-tapping screw ____x____
6	K002	Blind rivet 4x10 (8 pcs/m)

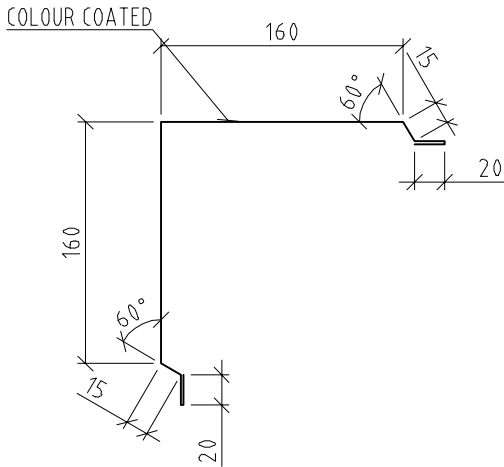
Subject of detail are only positioned elements!

All details are the property of Trimo®

EXTERNAL CORNER – SHARP-EDGED

AC2/1

ITEM 1 | 0164 | External corner flashing, sharp-edged



NOTE:

- For panel thickness of 50, 60, 80 or 100 mm.

Material: galvanised steel sheet 0,6 mm

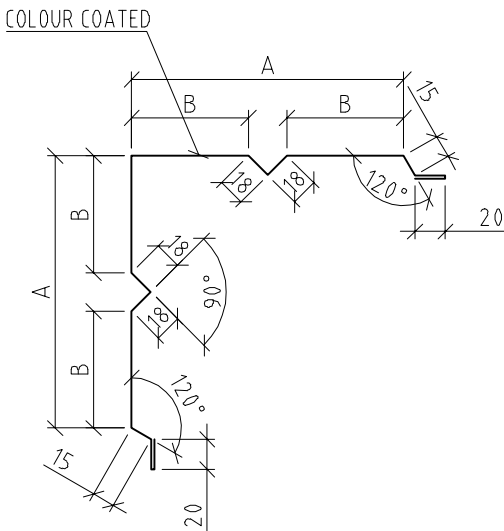
Colour _____

L = _____ PIECE _____

L = _____ PIECE _____

Steel sheet width ... 430

ITEM 1A | 0165 | External corner flashing, sharp-edged



NOTE:

- For panel thickness of 120, 133, 150, 172, 200 and 240 mm.

Material: galvanised steel sheet 0,6 mm

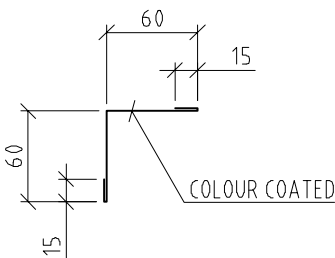
Colour _____

L = _____ PIECE _____

L = _____ PIECE _____

Panel thickness S	120	133	150	172	200	240
A	180	193	210	232	260	300
B	77	84	92	103	117	137
Steel sheet width	490	516	550	594	650	730

ITEM 2 | 0167 | Internal corner flashing

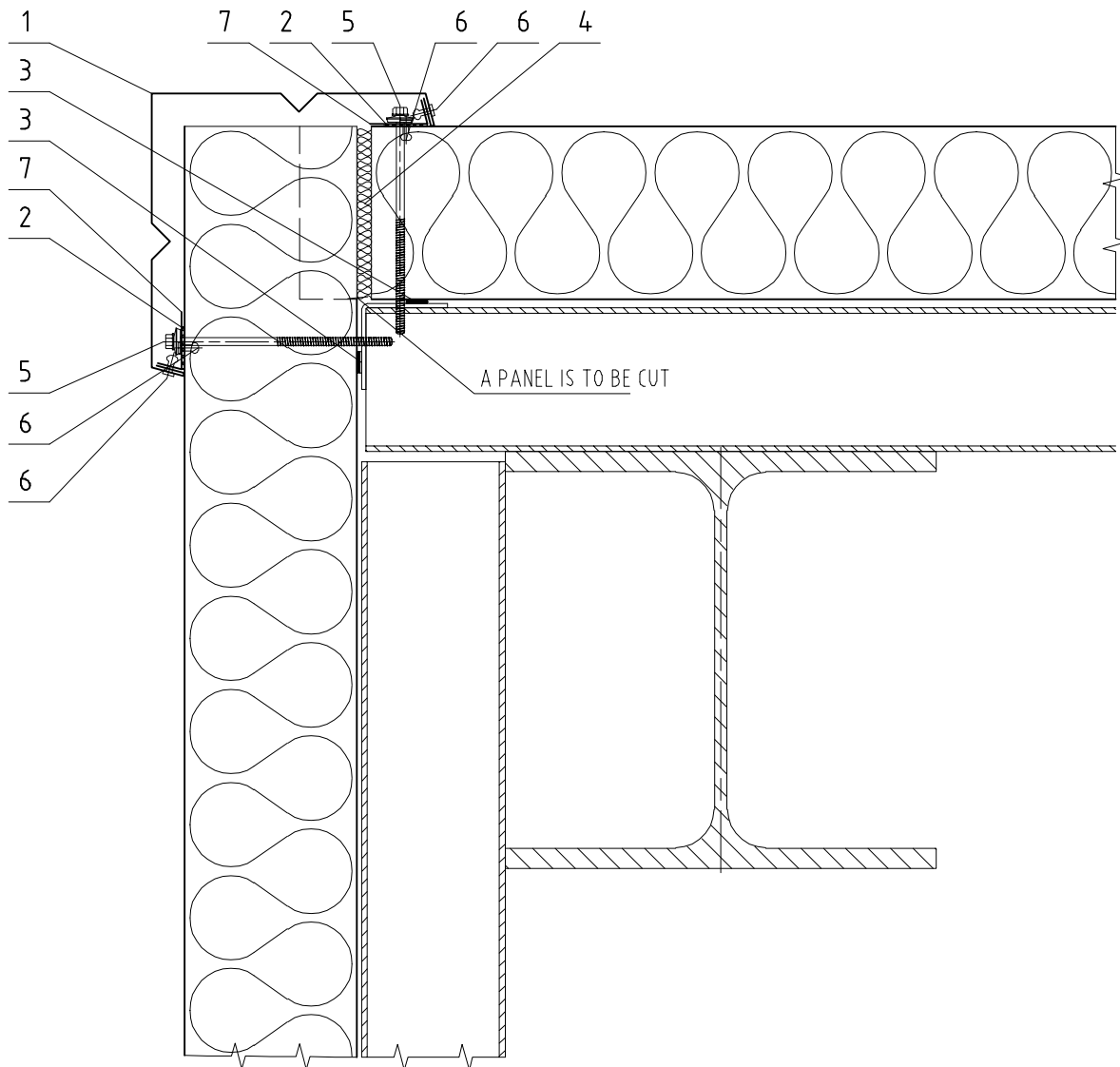


Material: galvanised steel sheet 0,6 mm

L = _____ PIECE _____

L = _____ PIECE _____

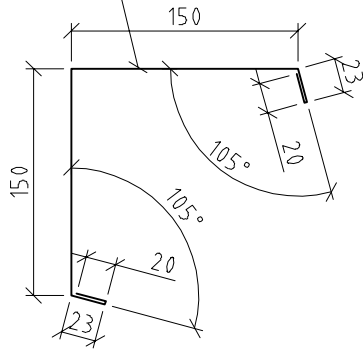
Steel sheet width ... 150



Item	Code	Description
1	O136	Sharp – edged corner flashing
2	T004	Sealing tape EPDM 2x47
3	T002	Sealing tape 3x15
4	W001	Thermal insulation
5	V027	Self-tapping screw ____x____
6	K002	Blind rivet 4x10 (8 pcs/m)
7	O139	Flashing support

ITEM 1 | 0136 | Sharp – edged corner flashing

COLOUR COATED



NOTE:

– For panel thickness of 60 and 80 mm.

Material: galvanised steel sheet 0,6 mm

Colour _____

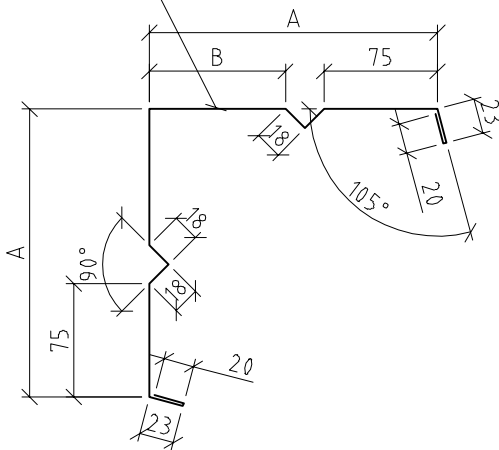
L = _____ PIECE _____

L = _____ PIECE _____

Steel sheet width ... 385

ITEM 1A | 0137 | Sharp – edged corner flashing

COLOUR COATED



NOTE:

– For panel thickness of 120, 133, 150, 172, 200 and 240 mm.

Material: galvanised steel sheet 0,6 mm

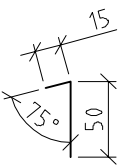
Colour _____

L = _____ PIECE _____

L = _____ PIECE _____

Panel thickness S	100	120	133	150	172	200	240
A	170	190	203	220	242	270	310
B	70	90	103	120	142	170	210
Steel sheet width	448	488	514	548	592	648	728

ITEM 7 | 0139 | Flashing support

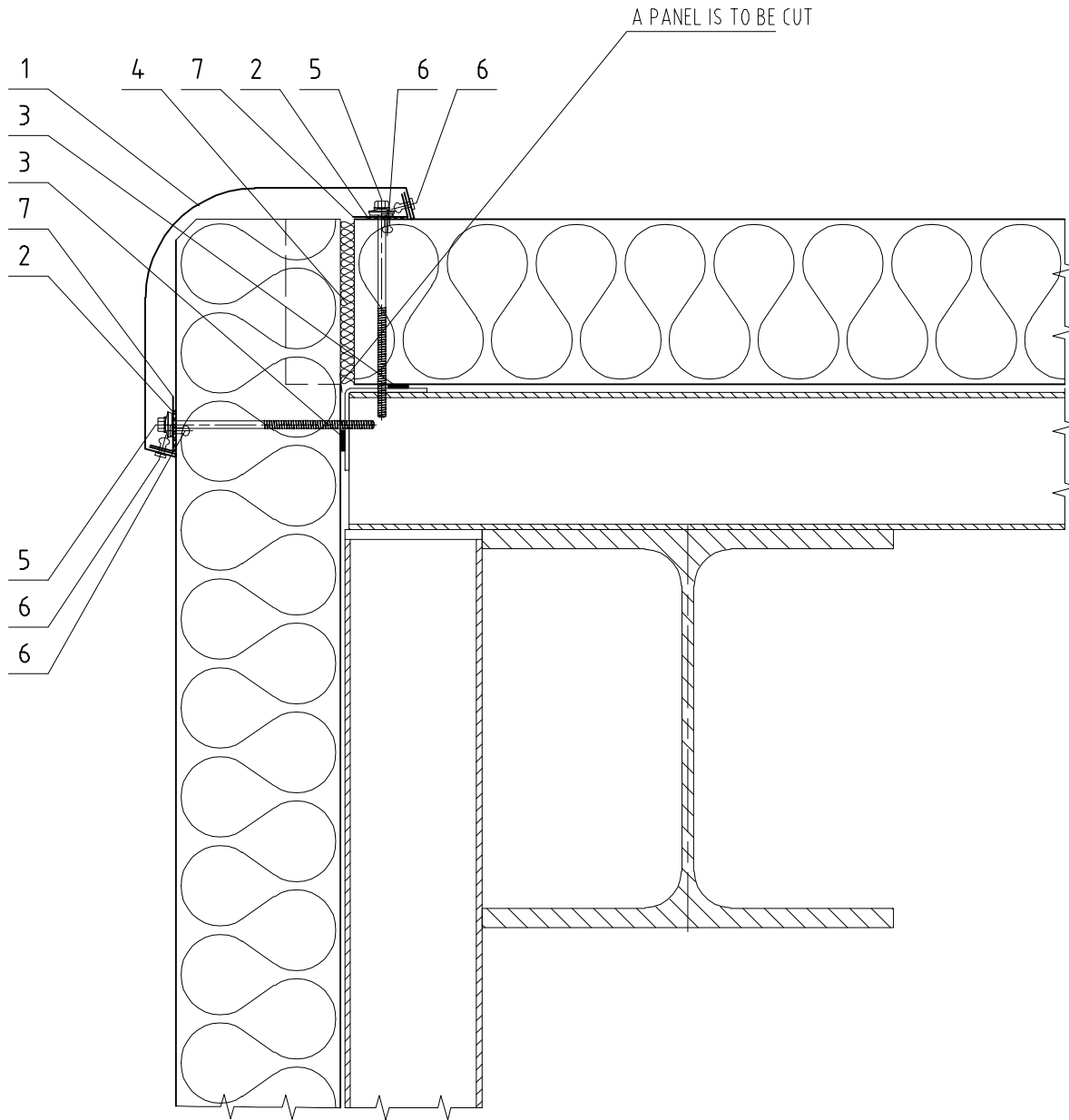


Material: galvanised steel sheet 0,7 mm

L = _____ PIECE _____

L = _____ PIECE _____

Steel sheet width ... 65

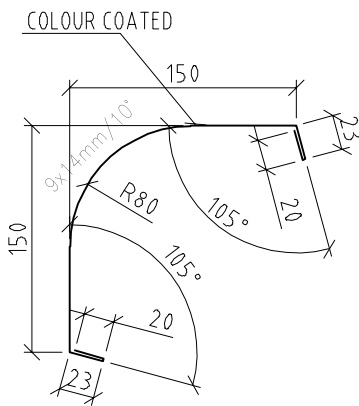


Item	Code	Description
1	0136	Rounded – off corner flashing
1A	0137	Rounded – off corner flashing
2	T004	Sealing tape EPDM 2x47
3	T002	Sealing tape 3x15
4	W001	Thermal insulation
5	V027	Self-tapping screw $\text{---} \times \text{---}$
6	K002	Blind rivet 4x10 (8 pcs/m)
7	0139	Flashing support

Subject of detail are only positioned elements!

All details are the property of Trimo®

ITEM 1 | 0136 | Rounded – off corner flashing



NOTE:
 – For panel thickness of 60 and 80 mm.

Material: galvanised steel sheet 0,6 mm

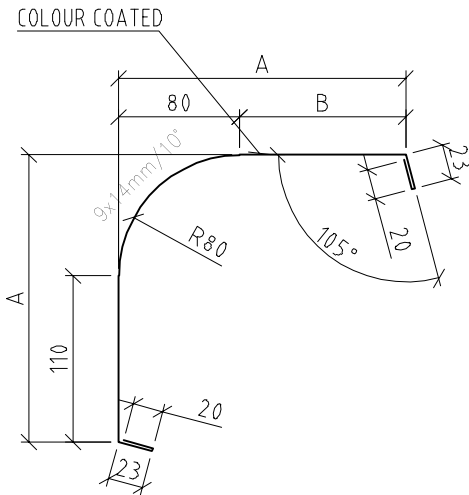
Colour _____

L = _____ PIECE _____

L = _____ PIECE _____

Steel sheet width ... 352

ITEM 1A | 0137 | Rounded – off corner flashing



NOTE:

– For panel thickness of 120, 133, 150, 172, 200 and 240 mm.

Material: galvanised steel sheet 0,6 mm

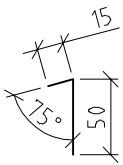
Colour _____

L = _____ PIECE _____

L = _____ PIECE _____

Panel thickness S	100	120	133	150	172	200	240
A	170	190	203	220	242	270	310
B	90	110	123	140	162	190	230
Steel sheet width	392	432	458	492	536	592	672

ITEM 7 | 0139 | Flashing support

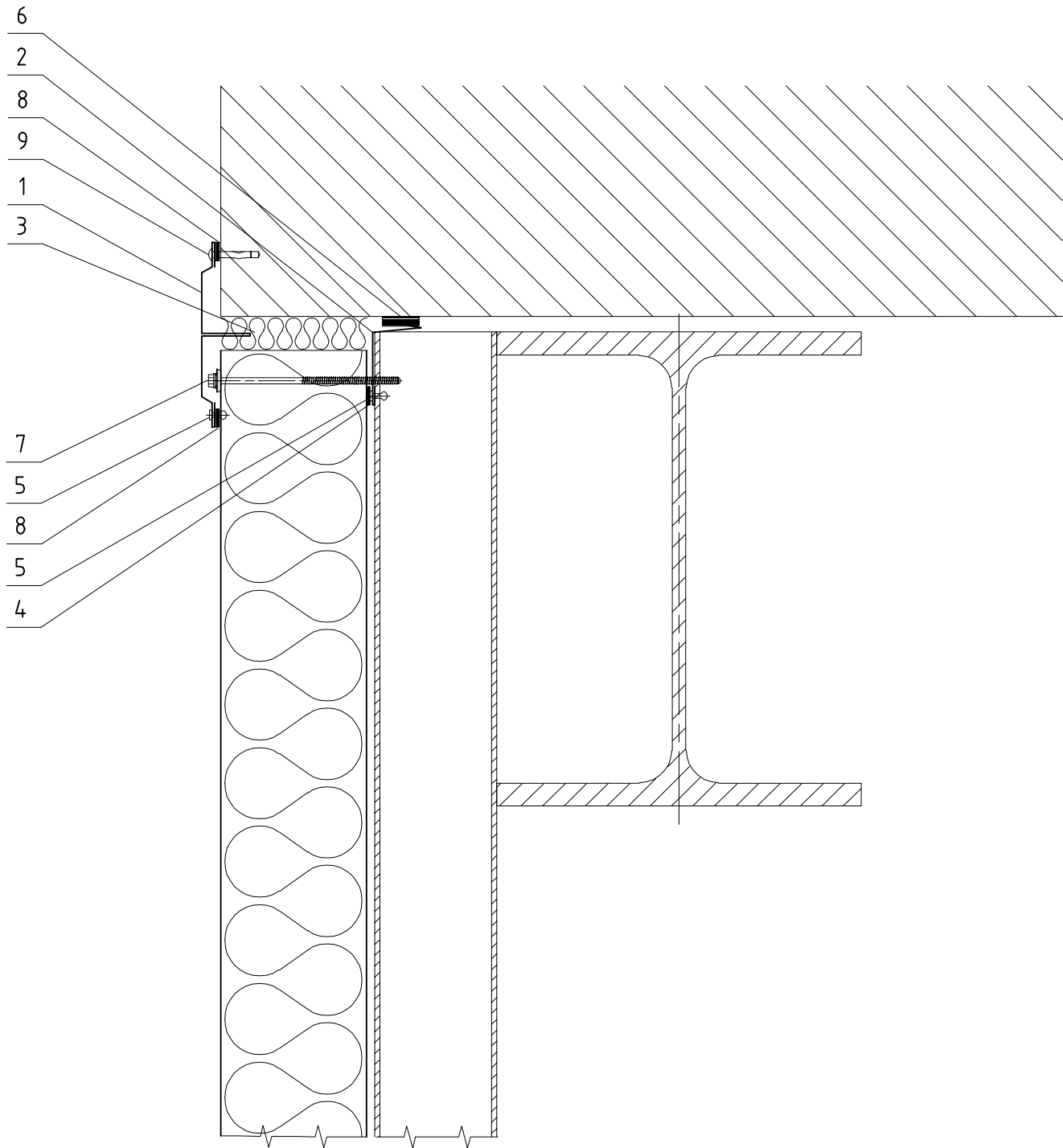


Material: galvanised steel sheet 0,7 mm

L = _____ PIECE _____

L = _____ PIECE _____

Steel sheet width ... 65

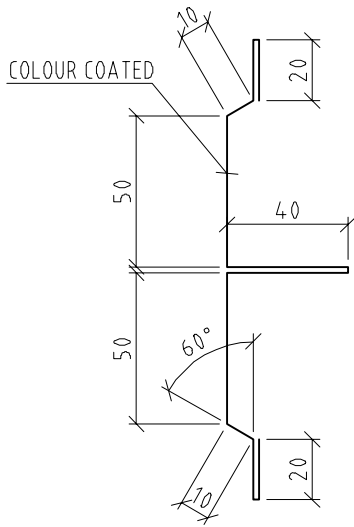


Item	Code	Description
1	O022	Covering flashing
2	O129	Internal corner flashing (wall)
3	W001	Thermal insulation
4	T002	Sealing tape 3x15
5	K002	Blind rivet 4x10 (4 pcs/m)
6	T16	Sealing tape 2/10x15
7	V027	Self-tapping screw ____x____ (2 pcs/m item1)
8	T002	Sealing tape 3x15
9	S023	SPIKE anchor 4,8x32

Subject of detail are only positioned elements!

All details are the property of Trimo©

ITEM 1 | 0022 | Joint flashing



Material: galvanised steel sheet 0,6 mm

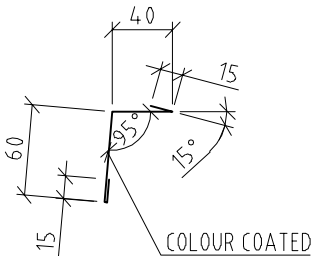
Colour _____

L = _____ PIECE _____

L = _____ PIECE _____

Steel sheet width ... 280

ITEM 2 | 0129 | Internal corner flashing (wall)



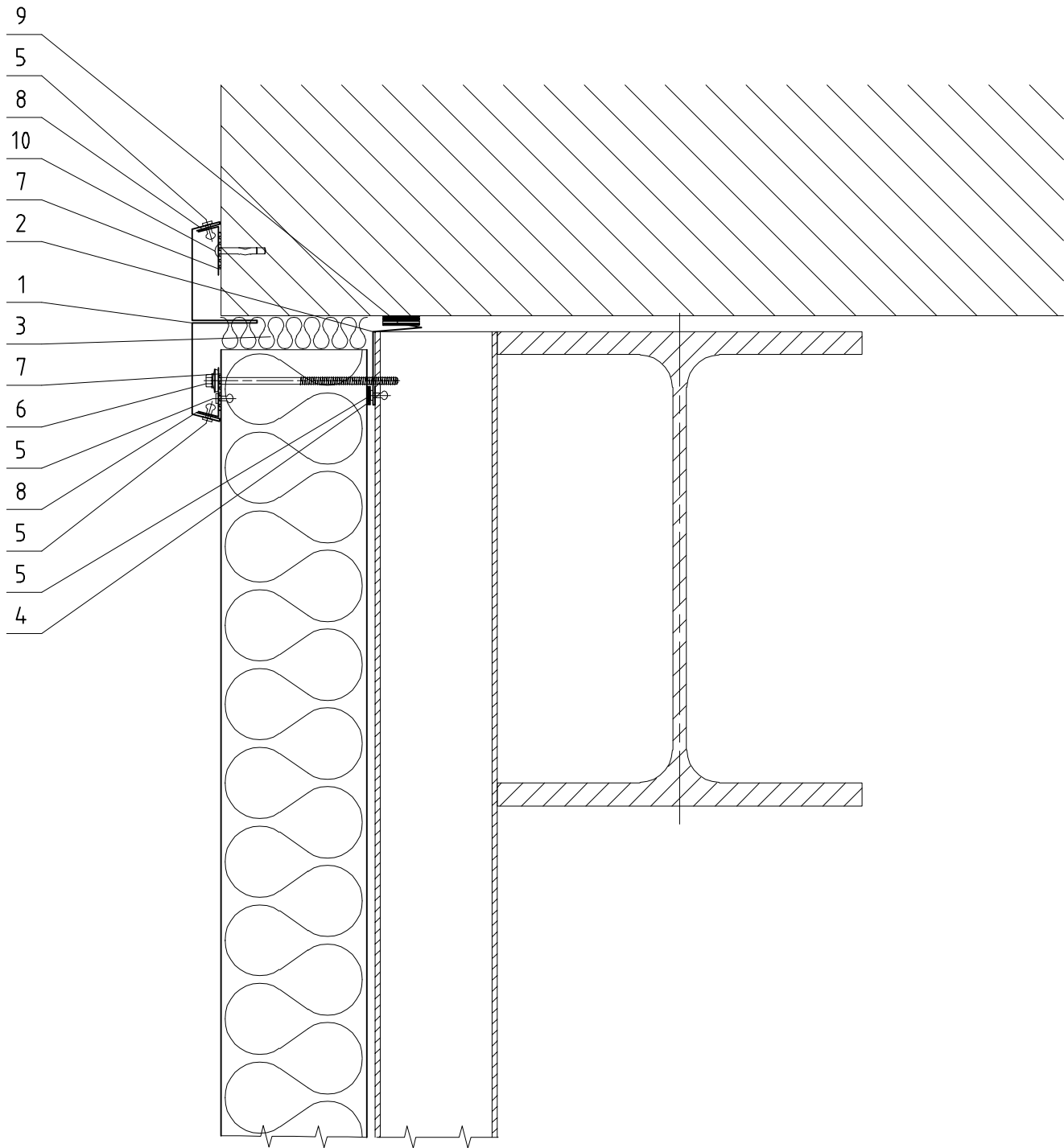
Material: galvanised steel sheet 0,6 mm

Colour _____

L = _____ PIECE _____

L = _____ PIECE _____

Steel sheet width ... 130



Item	Code	Description
1	O149	Joint flashing
2	O129	Internal corner flashing (wall)
3	W001	Thermal insulation
4	T002	Sealing tape 3x15
5	K002	Blind rivet 4x10 (8 pcs/m)
6	V027	Self-tapping screw _____x_____ (2 pcs/m item1)
7	T004	Sealing tape EPDM 2x47
8	O139	Flashing support
9	T016	Sealing tape 2/10x15
10	S023	SPIKE anchor 4,8x32

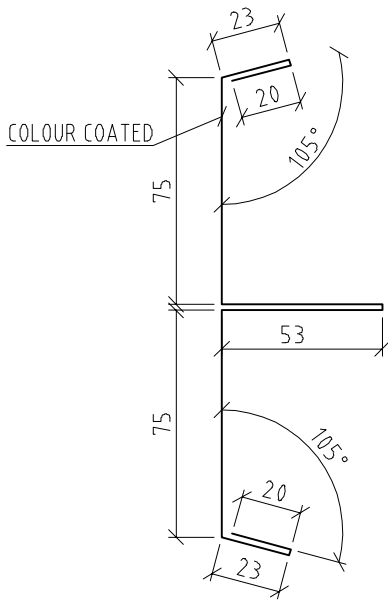
Subject of detail are only positioned elements!

All details are the property of Trimo®

PANEL TO WALL JOINT

AC3/2

ITEM 1 | 0149 | Joint flashing



Material: galvanised steel sheet 0,6 mm

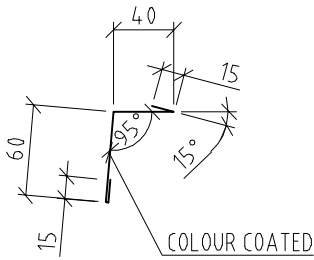
Colour _____

L = _____ PIECE _____

L = _____ PIECE _____

Steel sheet width ... 342

ITEM 2 | 0129 | Internal corner flashing (wall)



Material: galvanised steel sheet 0,6 mm

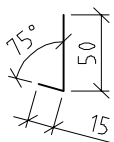
Colour _____

L = _____ PIECE _____

L = _____ PIECE _____

Steel sheet width ... 130

ITEM 8 | 0139 | Flashing support

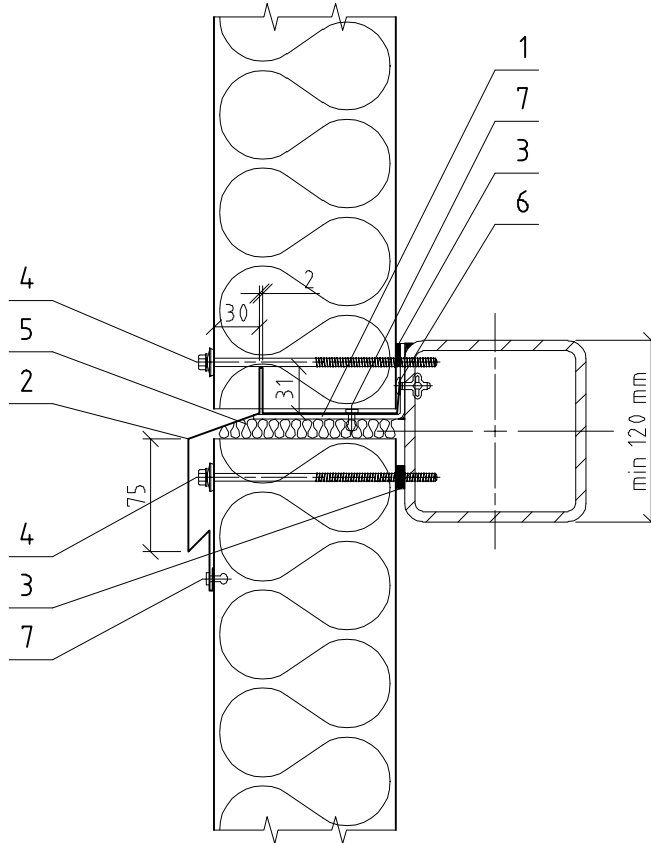


Material: galvanised steel sheet 0,7 mm

L = _____ PIECE _____

L = _____ PIECE _____

Steel sheet width ... 65



Item	Code	Description
1	N014	Panel support profile
2	O267	Drip flashing
3	T002	Sealing tape 3x15
4	V027	Self-tapping screw ____x____
5	W001	Thermal insulation
6	K014	Bulb tite rivet 5.2x19.1 (number in accordance with the calculation)
7	K002	Blind rivet 4x10 (4 pcs/m)

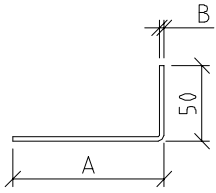
Subject of detail are only positioned elements!

All details are the property of Trimo©

PANEL TO PANEL JOINT

AC4/1

ITEM 1 | N014 | Panel support profile



Material: galvanised steel sheet B mm

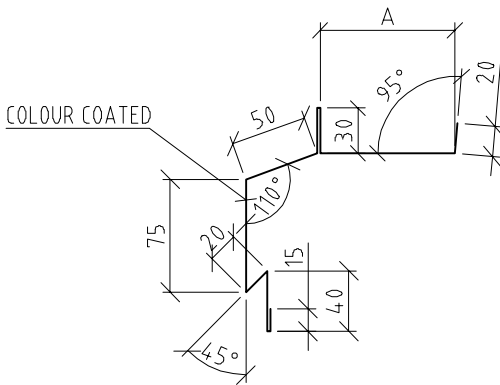
Colour _____

L = _____ PIECE _____

L = _____ PIECE _____

Panel thickness S	50	60	80	100	120	133	150	172	200	240
A	30	40	60	80	100	113	130	152	180	220
B	2	2	2	2	2	2	3	3	3	3
Steel sheet width	76	86	106	126	146	159	174	196	224	264

ITEM 7 | O267 | Drip flashing



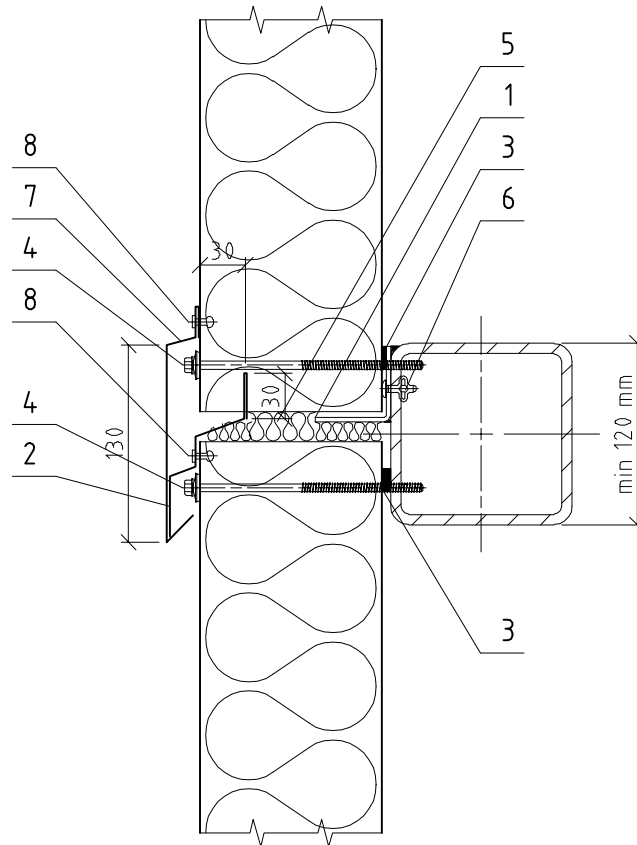
Material: galvanised steel sheet 0,6 mm

Colour _____

L = _____ PIECE _____

L = _____ PIECE _____

Panel thickness S	50	60	80	100	120	133	150	172	200	240
A	/	28	48	68	88	101	118	140	168	208
Steel sheet width	/	308	328	348	368	381	398	420	448	488



Item	Code	Description
1	N068	Panel support profile
2	O145	Drip flashing
3	T002	Sealing tape 3x15
4	V027	Self-tapping screw ____x____
5	W001	Thermal insulation
6	K014	Bolt 5.2x19.1 (the number according to the calculation)
7	O147	Drip flashing mask
8	K002	Blind rivet 4x10 (4 pcs/m)

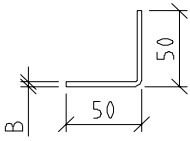
Subject of detail are only positioned elements!

All details are the property of Trimo®

PANEL TO PANEL JOINT

AC4/2

ITEM 1 | N068 | Panel support profile

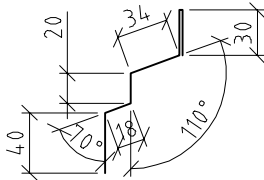


Material: galvanised steel sheet B mm

L = _____ PIECE _____
 L = _____ PIECE _____

Panel thickness S	50	60	80	100	120	133	150	172	200	240
B	3	3	3	3	3	3	4	4	4	4
Steel sheet width	94	94	94	94	94	94	92	92	92	92

ITEM 2 | O145 | Drip flashing

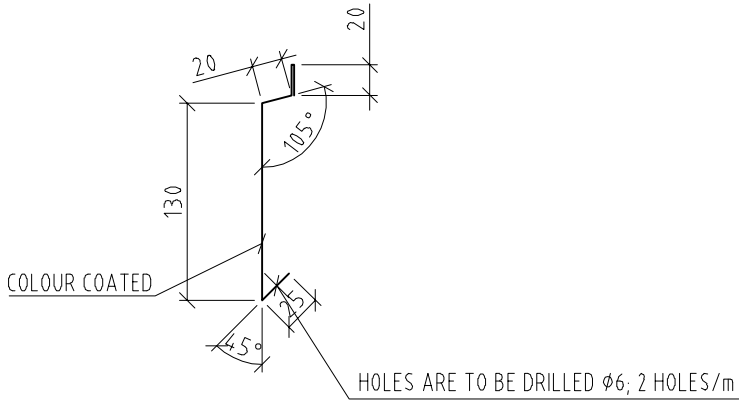


Material: galvanised steel sheet 0,7 mm

L = _____ PIECE _____
 L = _____ PIECE _____

Steel sheet width ... 172

ITEM 7 | O147 | Drip flashing mask

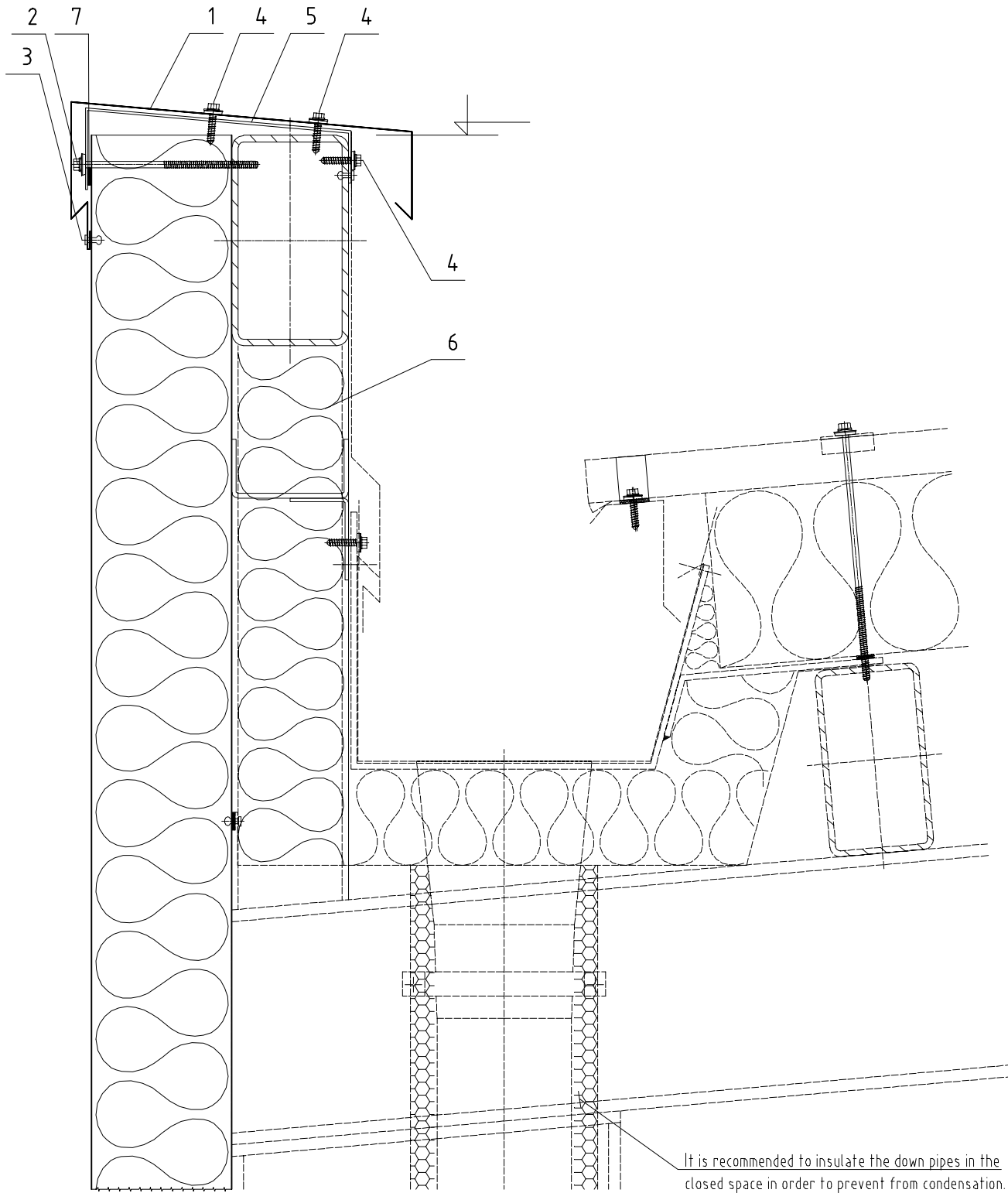


Material: galvanised steel sheet 0,6 mm

Colour _____

L = _____ PIECE _____
 L = _____ PIECE _____

Steel sheet width ... 195

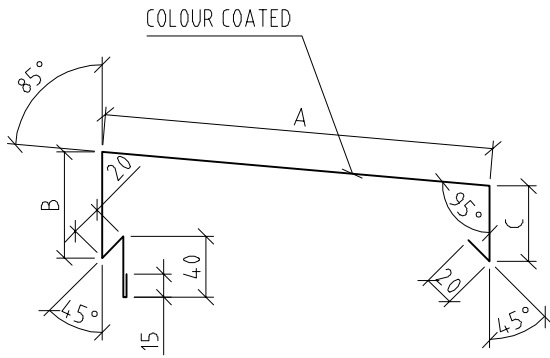


Item	Code	Description
1	0025	Parapet cap
2	V027	Self-tapping screw ____x____
3	K002	Blind rivet 4x10 (4 pcs/m)
4	V006	Self-tapping screw 6,5x25 (6 pcs/m)
5	N079	Parapet cap support profile (1 pc/m)
6	W001	Thermal insulation
7	T020	Sealing tape EPDM 3x20

Subject of detail are only positioned elements!

All details are the property of Trimo©

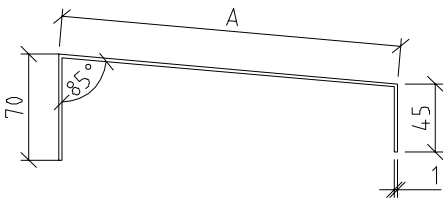
ITEM 1 | 0025 | Parapet cap



Material: galvanised steel sheet 0,6 mm
 Colour: _____

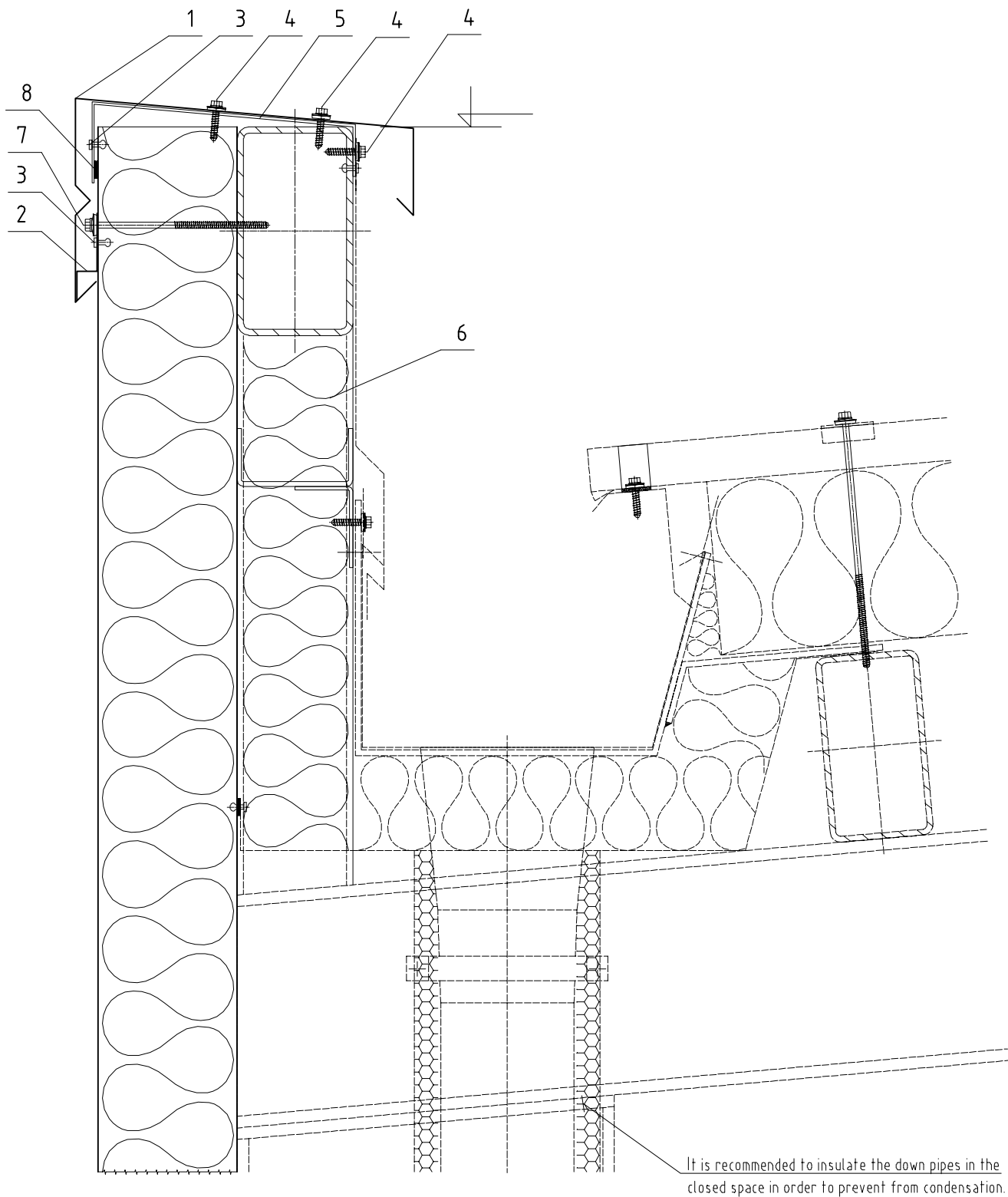
A	B	C	STEEL SHEET WIDTH	L	PIECE

ITEM 5 | N079 | Parapet cap support profile



Material: galvanised steel sheet 1x150 mm
 PIECE _____

Steel sheet width ... A + 111



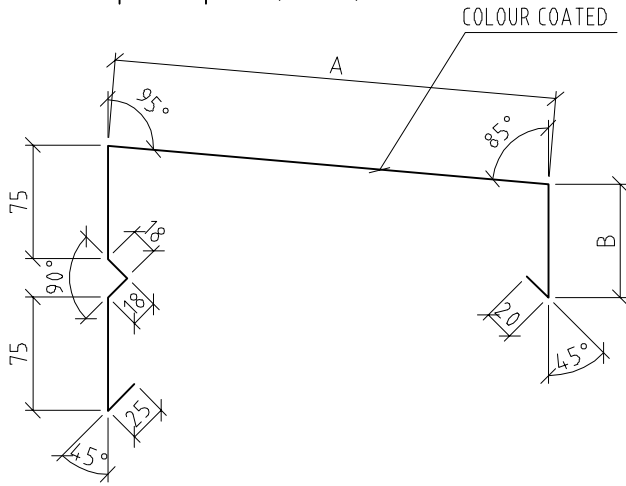
Item	Code	Description
1	0025	Parapet cap
2	0328	Flashing support
3	K002	Blind rivet 4x10 (6 pcs/m)
4	V006	Self-tapping screw 6,5x25 (2 pcs/m)
5	N094	Parapet cap support profile (1 pc/m)
6	W001	Thermal insulation
7	V027	Self-tapping screw ____x____
8	T020	Sealing tape EPDM 3x20

It is recommended to insulate the down pipes in the closed space in order to prevent from condensation.

Subject of detail are only positioned elements!

All details are the property of Trimo®

ITEM 1 | 0326 | Parapet cap

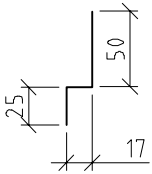


Material: galvanised steel sheet 0,6 mm

Colour: _____

A	B	STEEL SHEET WIDTH	L	PIECE

ITEM 2 | 0328 | Flashing support



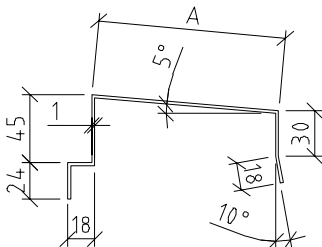
Material: galvanised steel sheet 0,7 mm

L = _____ PIECE _____

L = _____ PIECE _____

Steel sheet width ... 92

ITEM 5 | N094 | Parapet cap support profile

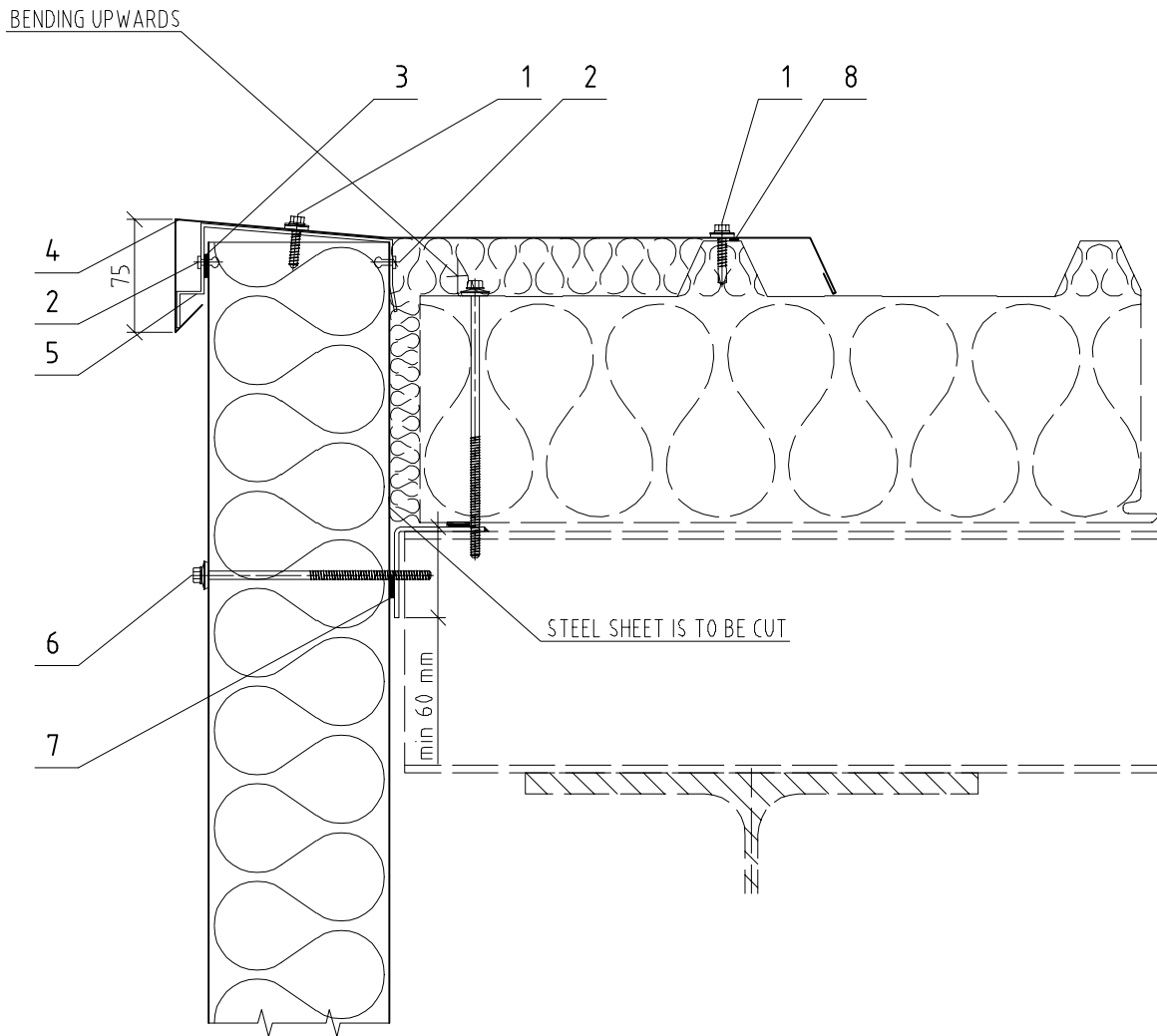


Material: galvanised steel sheet 1 mm

L = _____ PIECE _____

L = _____ PIECE _____

Steel sheet width ... A+127



Item	Code	Description
1	V006	Self-tapping screw 6,5x25 (4 pcs/m)
2	K002	Blind rivet 4x10 (6 pcs/m)
3	V028	Self-tapping screw ____x____
4	O134	Roof mask – gable
5	N094	Closing profile of the panel
6	V027	Self-tapping screw ____x____
7	T002	Sealing tape 3x15
8	T005	Butyl sealing tape 2x6

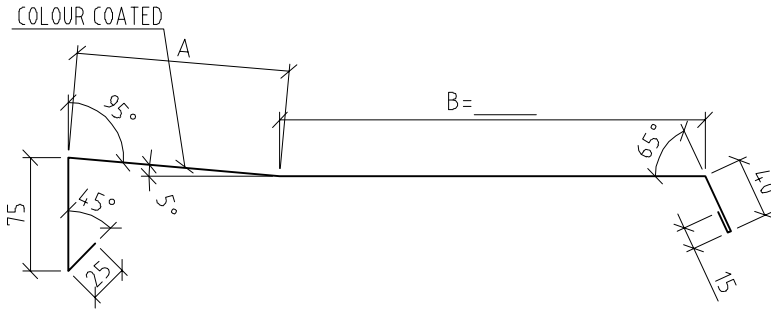
Subject of detail are only positioned elements!

All details are the property of Trimo©

GABLE DETAIL

AC6/1

ITEM 4 | O134 | Roof mask – gable



Material: galvanised steel sheet 0,6 mm

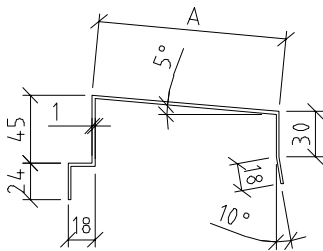
Colour _____

L = _____ PIECE _____

L = _____ PIECE _____

Panel thickness S	50	60	80	100	120	133	150	172	200	240
A	70	80	100	120	140	153	170	192	220	260
Steel sh. width ..A+B+155										

ITEM 5 | N094 | Closing profile of the panel

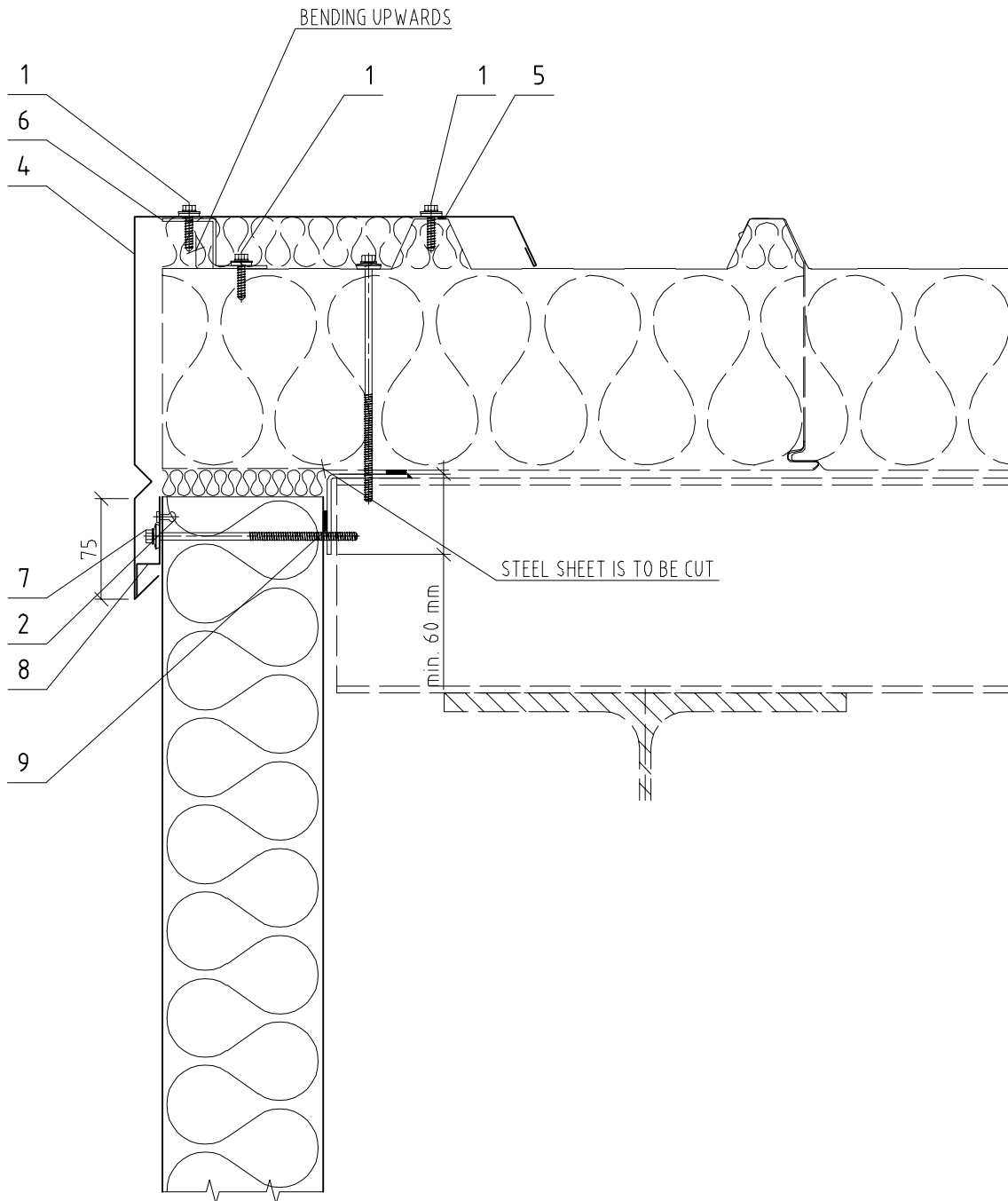


Material: galvanised steel sheet 1 mm

L = 100 mm PIECE _____

L = 100 mm PIECE _____

Panel thickness S	50	60	80	100	120	133	150	172	200	240
A	56	66	86	106	126	139	156	178	206	246
Steel sh. width ..A+127	183	193	213	233	253	266	283	305	333	373



Item	Code	Description
1	V006	Self-tapping screw 6,5x25 (5 pcs/m)
2	K002	Blind rivet 4x10 (2 pcs/m)
3	V028	Self-tapping screw ___x___
4	O133	Roof mask – gable
5	T005	Butyl sealing tape 2x6
6	N097	Gable flashing support
7	V027	Self-tapping screw ___x___
8	O079	Flashing support
9	T002	Sealing tape 3x15

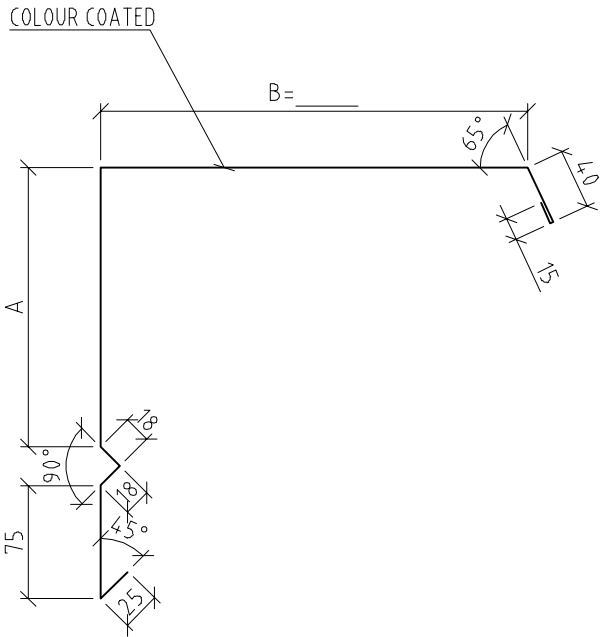
Subject of detail are only positioned elements!

All details are the property of Trimo©

GABLE DETAIL

AC6/2

ITEM 4 | 0133 | Roof mask – gable



Material: galvanised steel sheet 0,6 mm

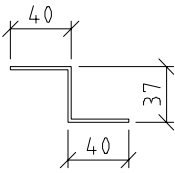
Colour _____

L = _____ PIECE _____

L = _____ PIECE _____

Panel thickness S	50	60	80	100	120	133	150	172	200	240
A	85	95	115	135	155	168	185	207	235	275
Steel sheet width ...A+B+191										

ITEM 6 | N097 | Gable flashing support



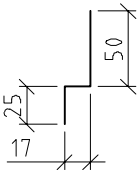
Material: galvanised steel sheet 1 mm

L = _____ PIECE _____

L = _____ PIECE _____

Steel sheet width ... 113

ITEM 8 | 0079 | Flashing support

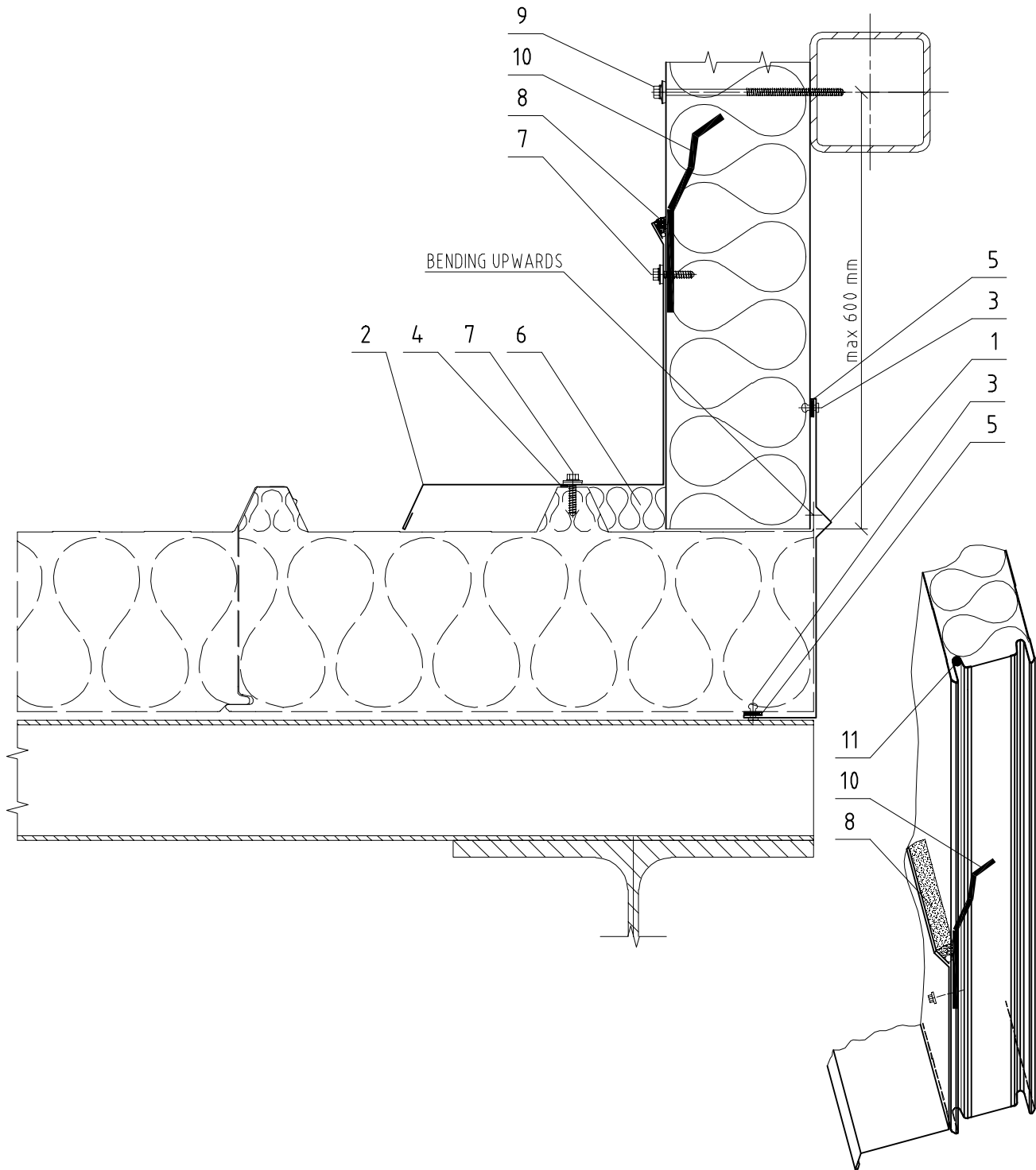


Material: galvanised steel sheet 0,7 mm

L = _____ PIECE _____

L = _____ PIECE _____

Steel sheet width ... 92



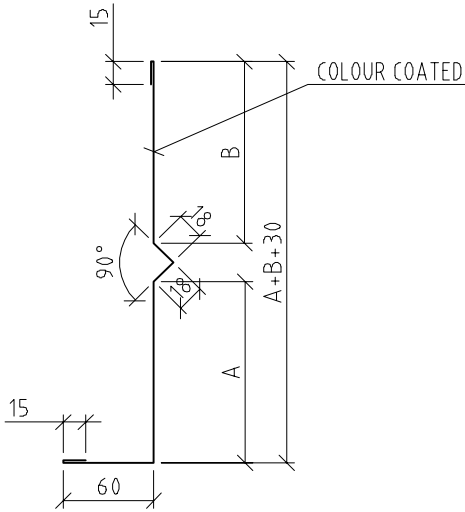
Item	Code	Description
------	------	-------------

1	O207	Internal corner flashing (roof)
2	O209	Drip flashing – on a roof
3	K002	Blind rivet 4x10 (3 pcs/m)
4	T005	Butyl sealing tape 2x6
5	T002	Sealing tape 3x15
6	W001	Thermal insulation
7	V006	Self-drilling screw 6,5x25 (3 pcs/m)
8	T011	PE rope + mastic seal
9	V027	Self-tapping screw ____x____
10	T006	Mastic seal
11	T009	Joint seal

Subject of detail are only positioned elements!

All details are the property of Trimo®

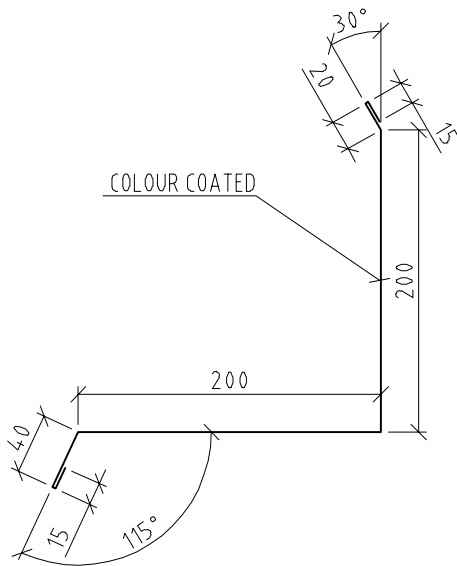
ITEM 1 | 0207 | Internal corner flashing (roof)



Material: galvanised steel sheet 0,6 mm
 Colour _____
 L = _____ PIECE _____
 L = _____ PIECE _____

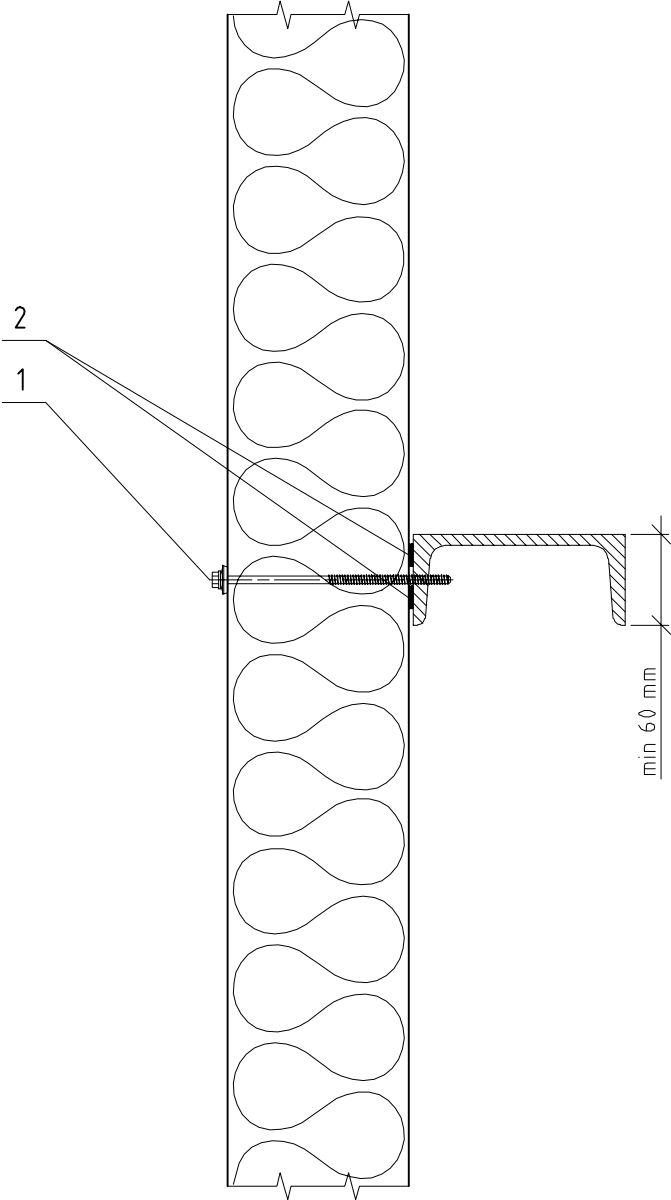
Panel thickness S	/	60	80	100	120	/	150	172	200
A	/	60	80	100	120	/	150	172	200
B									
Steel sheet width ... 126+A+B									

ITEM 2 | 0209 | Drip flashing – on a roof



Material: galvanised steel sheet 0,6 mm
 Colour _____
 L = _____ PIECE _____
 L = _____ PIECE _____

Steel sheet width ... 495



Item	Code	Description
1	V027	Self-tapping screws ____x____
2	T002	Sealing tape 3x15

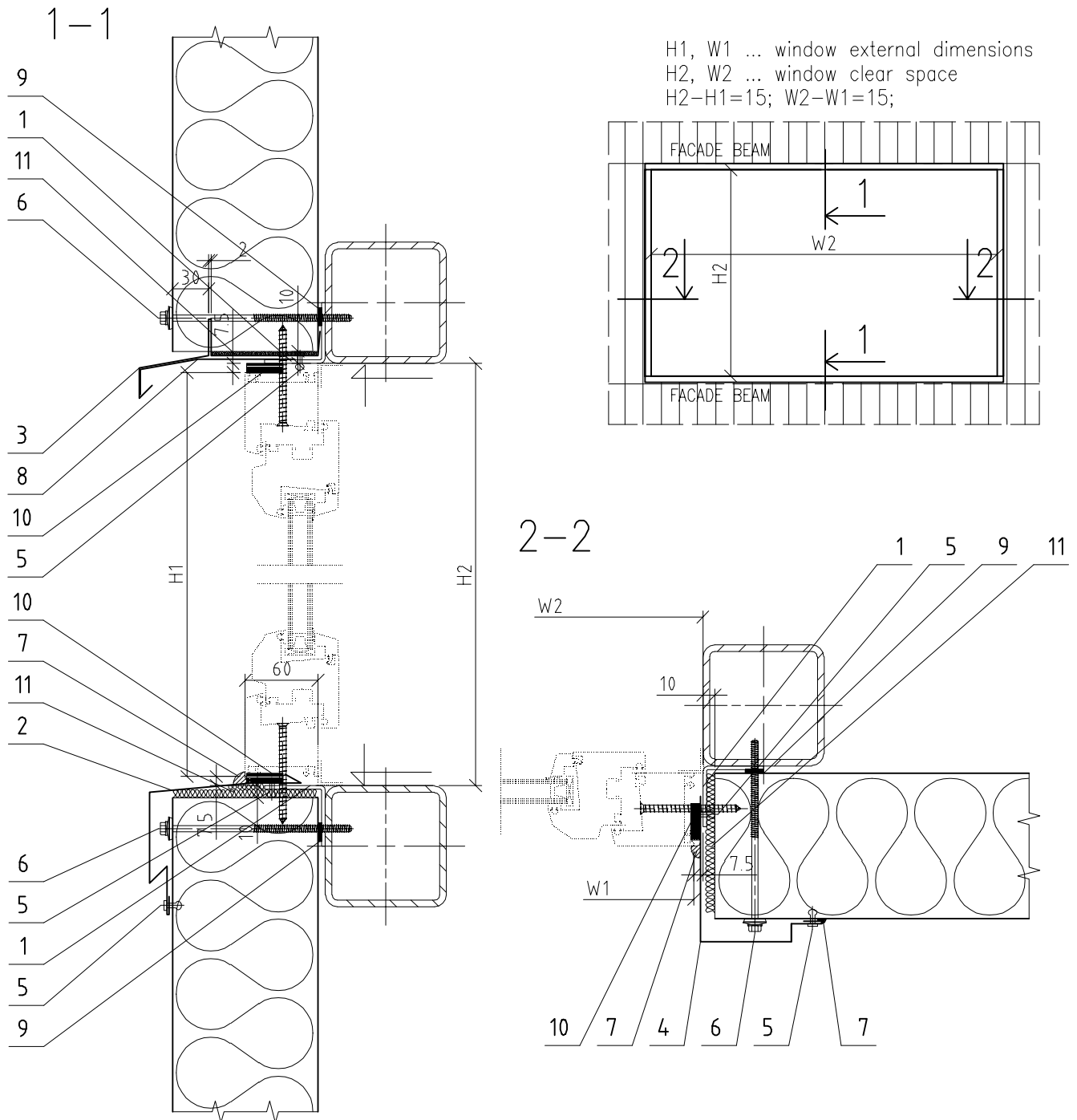
Subject of detail are only positioned elements!

All details are the property of Trimo.©

FIXING – CENTRAL SUPPORT

AC8/1

VERTICAL FACADE SYSTEM



NOTE:

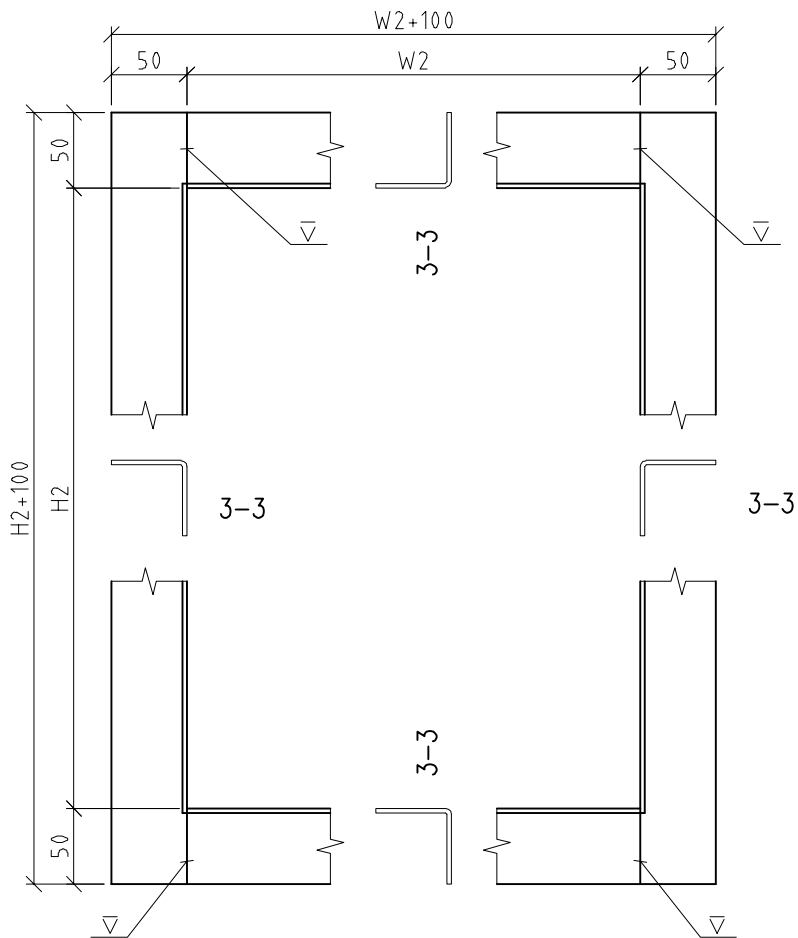
- Detail assembly without a substructure is allowed only when Trimo technical department has prepared a prior static calculation.

Item	Code	Description
1	N068	Support frame
2	O486	Window sill drip flashing
3	O231	Window head drip flashing
4	O504	Jamb flashing
5	K002	Blind rivet 4x10 (12 pcs/m)
6	V027	Self-tapping screw ____x____
7	T006	Mastic seal
8	O561	Drip flashing mask - top
9	T002	Sealing tape 3x15
10	T016	Sealing tape 2/10x15 (during window installation)
11	W001	Thermal insulation

Subject of detail are only positioned elements!

All details are the property of Trimo ©

INSTALLATION OF A WINDOW LARGER THAN THE PANEL WIDTH AD1 / 1



NOTE:

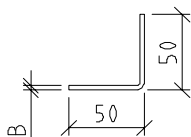
- The weld seam should be protected using a zinc-based paint.

Material: galvanised steel sheet B mm

(3-3) L = H2+100=_____ PIECE _____

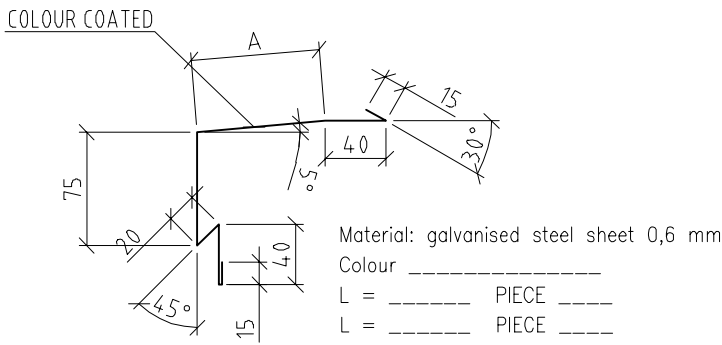
(3-3) L = W2=_____ PIECE _____

3-3



Panel thickness S	50	60	80	100	120	133	150	172	200	240
B	2	2	2	2	2	2	3	3	3	3
Steel sheet width (3-3)	96	96	96	96	96	96	94	94	94	94

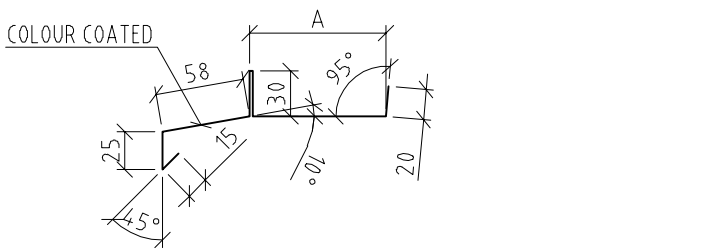
ITEM 2 | 0486 | Window sill drip flashing



Panel thickness S	50	60	80	100	120	133	150	172	200	240
A*	/	25	45	65	85	98	115	137	165	205
Steel sheet width	/	230	250	270	290	303	320	342	370	410

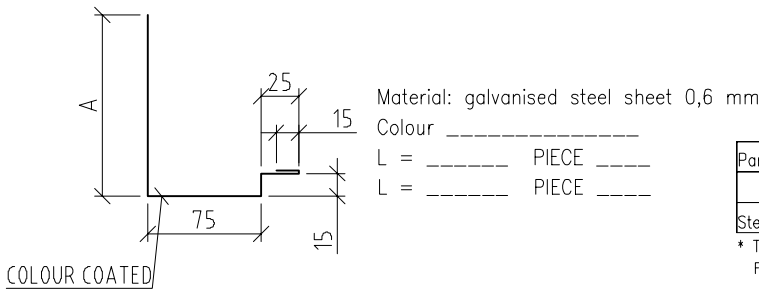
* The dimension A is adjusted to match the window thickness of 60 mm.
 For other window thicknesses the dimension A should be modified.

ITEM 3 | 0231 | Window head drip flashing



Panel thickness S	50	60	80	100	120	133	150	172	200	240
A	/	28	48	68	88	101	118	140	168	208
Steel sheet width	/	208	228	248	268	281	298	320	348	388

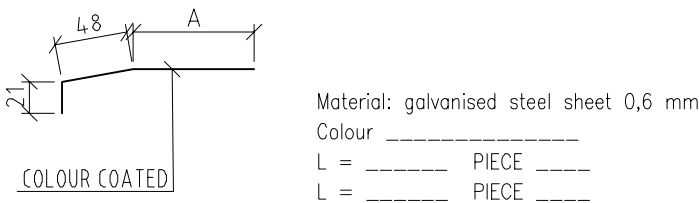
ITEM 4 | 0504 | Jamb flashing



Panel thickness S	50	60	80	100	120	133	150	172	200	240
A*	/	60	80	100	120	133	150	172	200	240
Steel sheet width	/	190	210	230	250	263	280	302	330	370

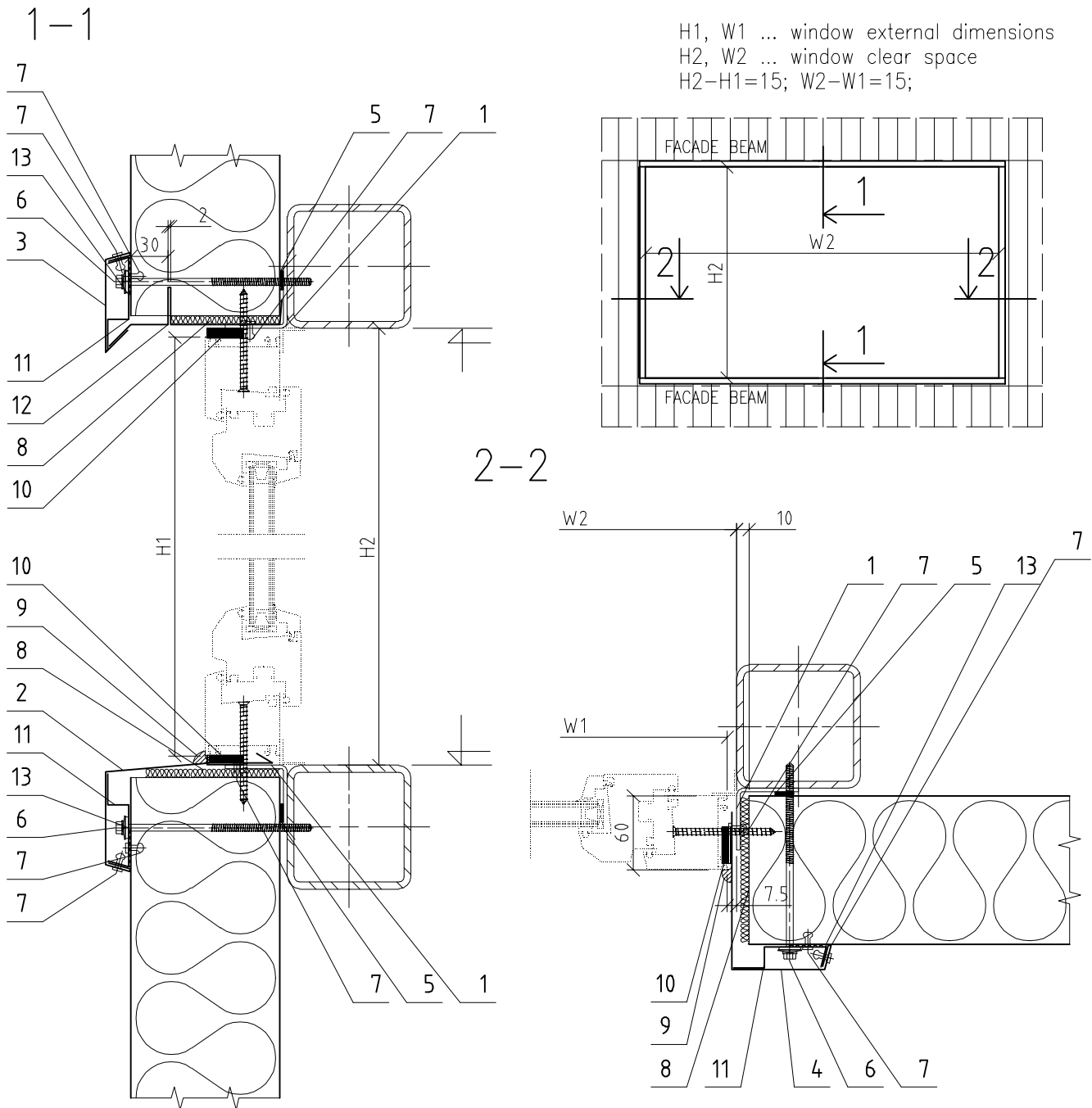
* The dimension A is adjusted to match the window thickness of 60 mm.
 For other window thicknesses the dimension A should be modified.

ITEM 8 | 0561 | Drip flashing mask – top



Panel thickness S	50	60	80	100	120	133	150	172	200	240
A*	/	20	40	60	80	93	110	132	160	200
Steel sheet width		89	109	129	149	162	179	201	229	269

* The dimension A is adjusted to match the window thickness of 60 mm.
 For other window thicknesses the dimension A should be modified.



NOTE:
 - Detail assembly without a substructure is allowed only when Trimo technical department has prepared a prior static calculation.

Item	Code	Description
1	N068	Support frame
2	O531	Window sill drip flashing
3	O076	Drip flashing mask
4	O522	Jamb flashing
5	T002	Sealing tape 3x15
6	V027	Self-tapping screw _____x_____
7	K002	Blind rivet 4x10 (12 pcs/m)
8	W001	Thermal insulation
9	T006	Mastic seal
10	T016	Sealing tape 2/10x15 (during window installation)
11	O078	Flashing support
12	O540	Window head drip flashing
13	T004	Sealing tape EPDM 2x47 (under the screw)

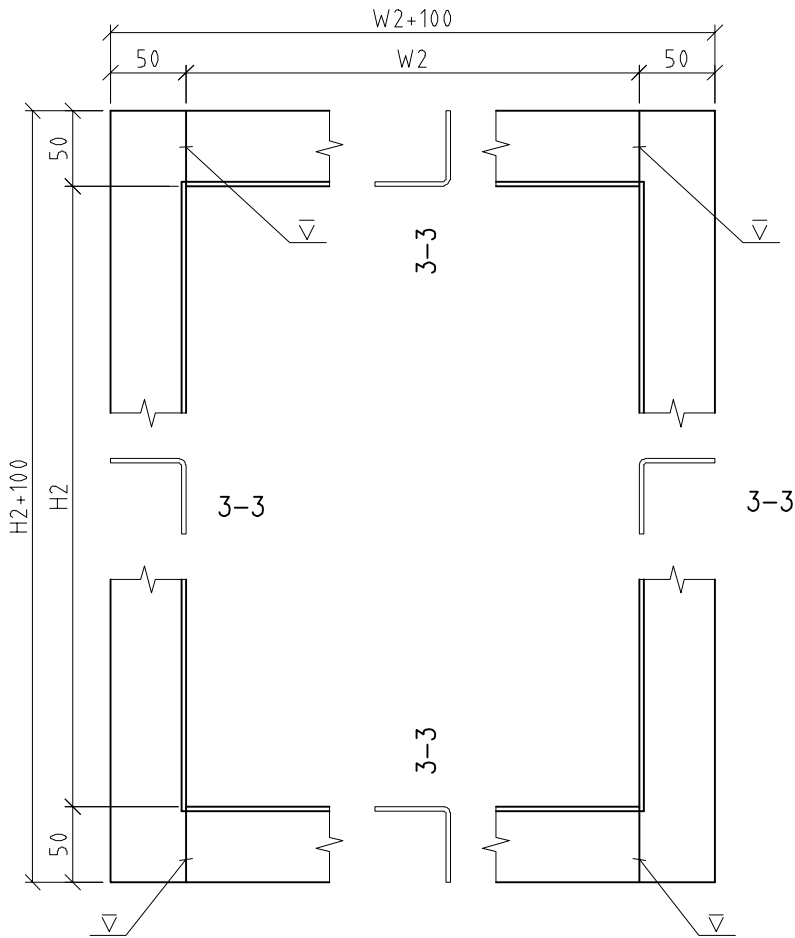
Subject of detail are only positioned elements!

All details are the property of Trimo©

INSTALLATION OF A WINDOW LARGER THAN THE PANEL WIDTH AD1/2

Ver. 2.2 - March 2015 Note: All rights to alterations reserved! A designer is responsible for any changes in details!

ITEM 1 | N068 | Support frame



NOTE:

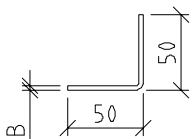
- The weld seam should be protected using a zinc-based paint.

Material: galvanised steel sheet B mm

(3-3) L = H2+100=_____ PIECE _____

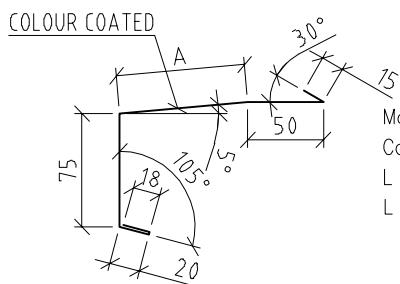
(3-3) L = W2=_____ PIECE _____

3-3



Panel thickness S	50	60	80	100	120	133	150	172	200	240
B	2	2	2	2	2	2	3	3	3	3
Steel sheet width (3-3)	96	96	96	96	96	96	94	94	94	94

ITEM 2 | 0531 | Window sill drip flashing



Material: galvanised steel sheet 0,6 mm

Colour _____

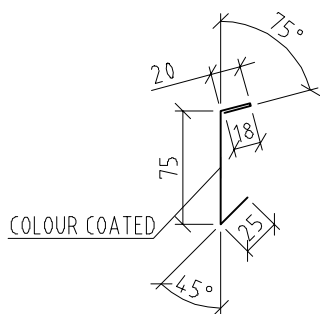
L = _____ PIECE _____

L = _____ PIECE _____

Panel thickness S	50	60	80	100	120	133	150	172	200	240
A*	/	25	45	65	85	98	115	137	165	205
Steel sheet width	/	203	223	243	263	276	293	315	343	383

* The dimension A is adjusted to match the window thickness of 60 mm.
For other window thicknesses the dimension A should be modified.

ITEM 3 | 0076 | Drip flashing mask



Material: galvanised steel sheet 0,6 mm

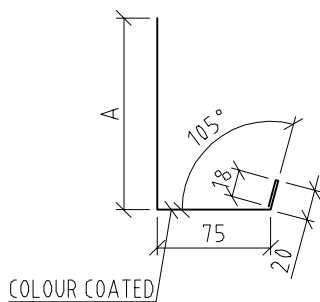
Colour _____

L = _____ PIECE _____

L = _____ PIECE _____

Steel sheet width ... 138

ITEM 4 | 0522 | Jamb flashing



Material: galvanised steel sheet 0,6 mm

Colour _____

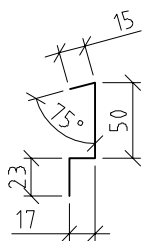
L = _____ PIECE _____

L = _____ PIECE _____

Panel thickness S	50	60	80	100	120	133	150	172	200	240
A*	/	67	87	107	127	140	157	179	207	247
Steel sheet width	/	180	200	220	240	253	270	292	320	360

* The dimension A is adjusted to match the window thickness of 60 mm.
For other window thicknesses the dimension A should be modified.

ITEM 11 | 0078 | Flashing support



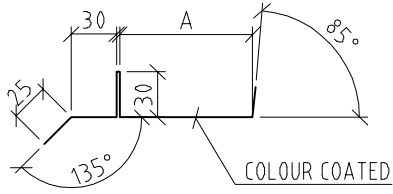
Material: galvanised steel sheet 0,7 mm

L = _____ PIECE _____

L = _____ PIECE _____

Steel sheet width ... 105

ITEM 12 | 0540 | Window head drip flashing



Material: galvanised steel sheet 0,6 mm

L = ----- PIECE -----

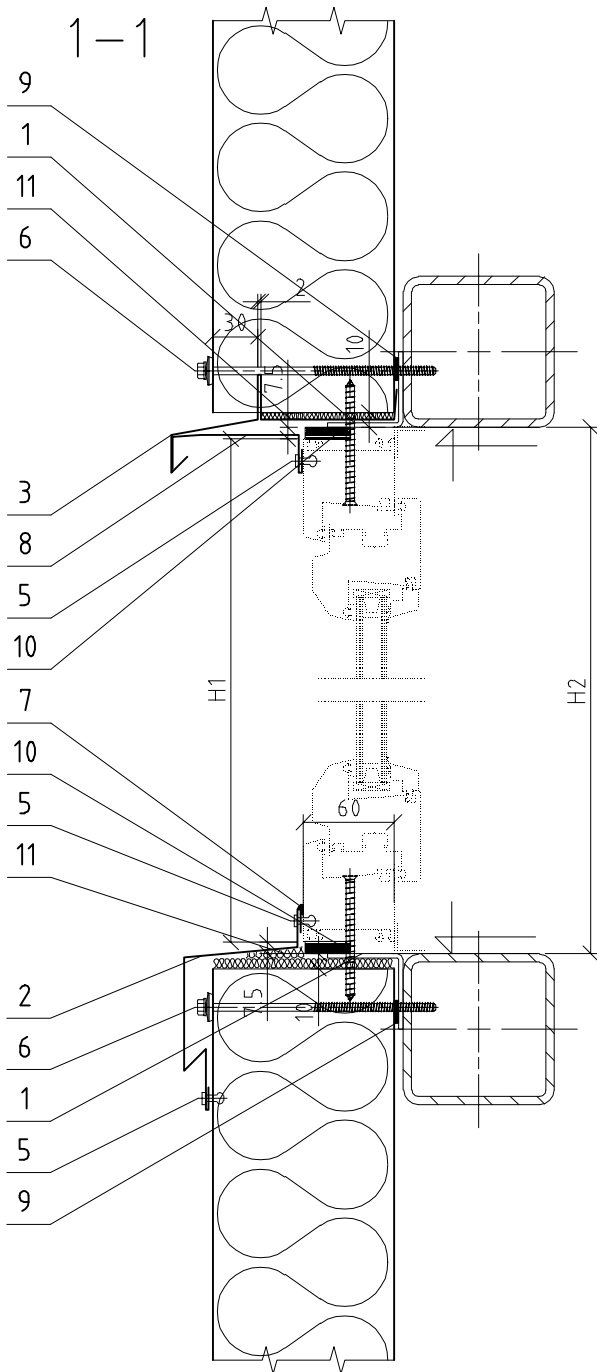
L = ----- PIECE -----

Panel thickness S	50	60	80	100	120	133	150	172	200	240
A*	/	28	48	68	88	101	118	140	168	208
Steel sheet width	/	163	183	203	223	236	253	275	303	343

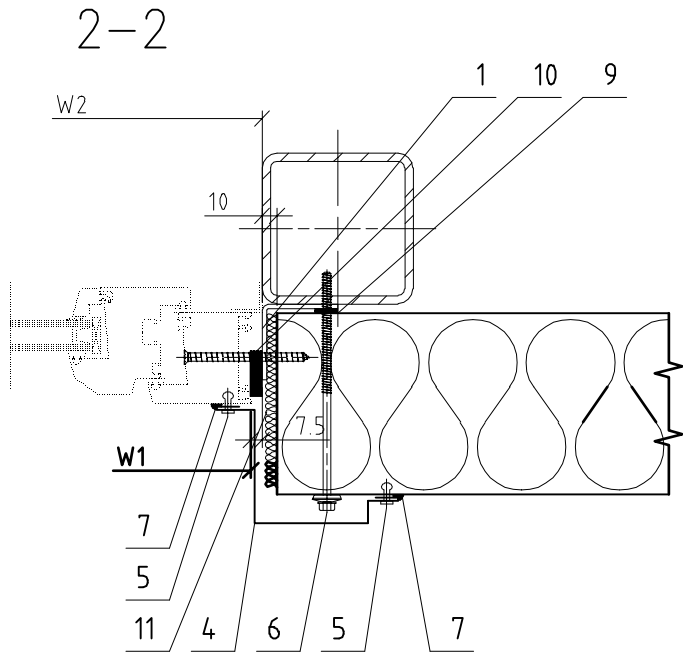
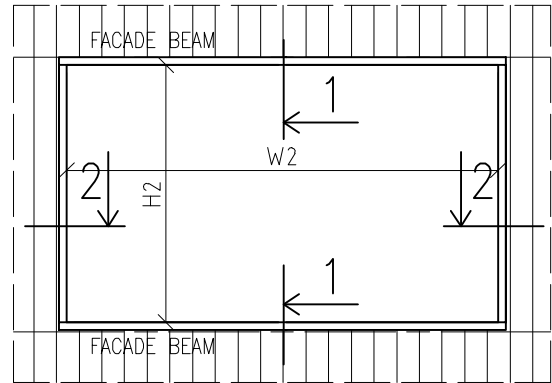
* The dimension A is adjusted to match the window thickness of 60 mm.

For other window thicknesses the dimension A should be modified.

** Butyl tape on the aluminium foil should be used for 60 mm thick panels instead of the drip flashing.



H1, W1 ... window external dimensions
 H2, W2 ... window clear space
 $H2 - H1 = 15$; $W2 - W1 = 15$;



NOTE:

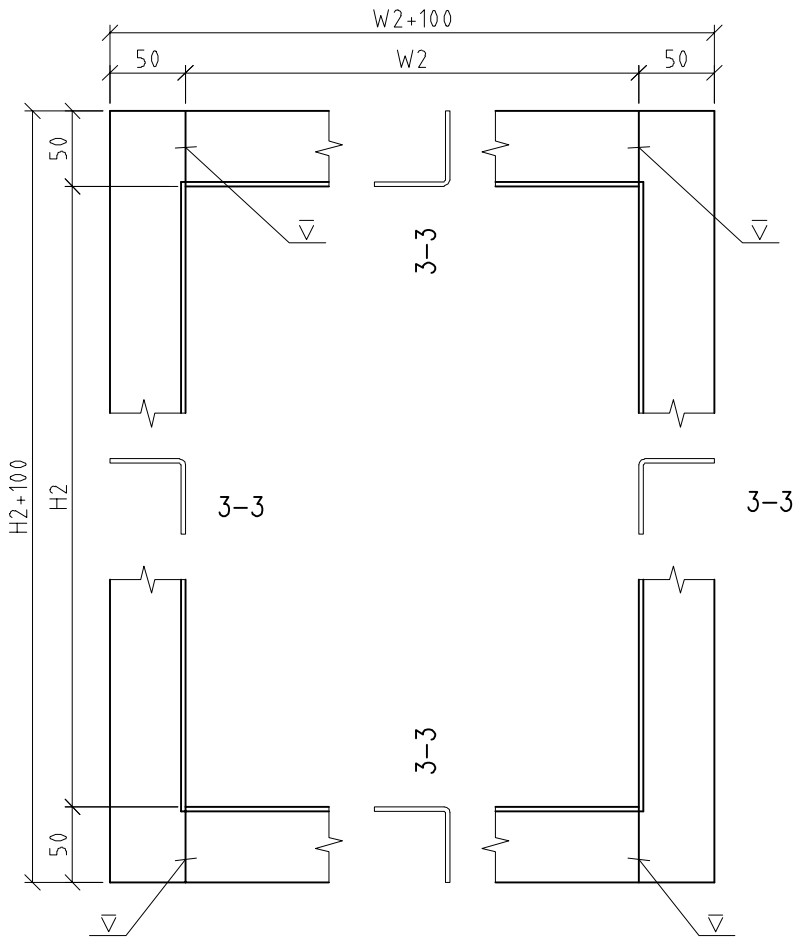
- Detail assembly without a substructure is allowed only when Trimo technical department has prepared a prior static calculation.

Item	Code	Description
1	N068	Support frame
2	O031	Window sill drip flashing
3	O231	Window head drip flashing
4	O049	Jamb flashing
5	K002	Blind rivet 4x10 (12 pcs/m)
6	V027	Self-tapping screw ___x___
7	T006	Mastic seal
8	O240	Drip flashing mask - top
9	T002	Sealing tape 3x15
10	T016	Sealing tape 2/10x15 (during window installation)
11	W001	Thermal insulation

Subject of detail are only positioned elements!

All details are the property of Trimo®

ITEM 1 | N068 | Support frame



NOTE:

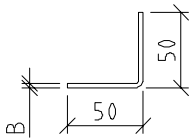
- The weld seam should be protected using a zinc-based paint.

Material: galvanised steel sheet B mm

(3-3) L = H2+100=_____ PIECE _____

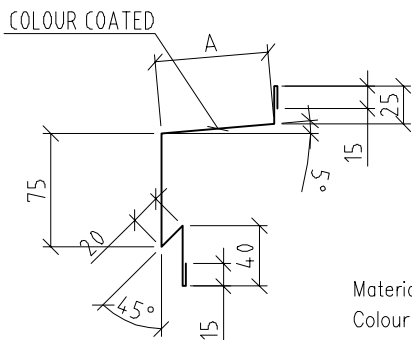
(3-3) L = W2=_____ PIECE _____

3-3



Panel thickness S	50	60	80	100	120	133	150	172	200	240
B	2	2	2	2	2	2	3	3	3	3
Steel sheet width (3-3)	96	96	96	96	96	96	94	94	94	94

ITEM 2 | 0031 | Window sill drip flashing



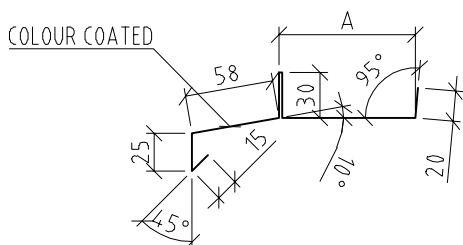
Material: galvanised steel sheet 0,6 mm

Colour _____
 L = _____ PIECE _____
 L = _____ PIECE _____

Panel thickness S	50	60	80	100	120	133	150	172	200	240
A*	/	15	35	55	75	88	105	127	155	195
Steel sheet width	/	205	225	245	265	248	295	317	345	385

* The dimension A is adjusted to match the window thickness of 60 mm.
 For other window thicknesses the dimension A should be modified.

ITEM 3 | 0231 | Window head drip flashing

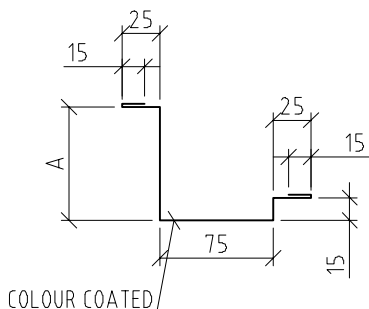


Material: galvanised steel sheet 0,6 mm

Colour _____
 L = _____ PIECE _____
 L = _____ PIECE _____

Panel thickness S	50	60	80	100	120	133	150	172	200	240
A	/	28	48	68	88	101	118	140	168	208
Steel sheet width	/	208	228	248	268	281	298	320	348	388

ITEM 4 | 0049 | Jamb flashing



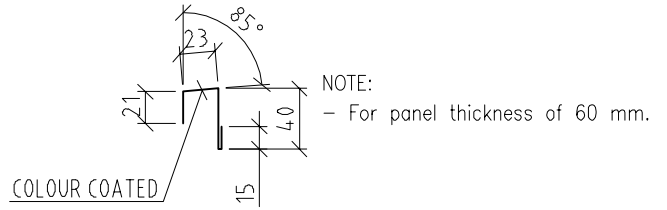
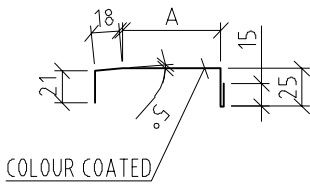
Material: galvanised steel sheet 0,6 mm

Colour _____
 L = _____ PIECE _____
 L = _____ PIECE _____

Panel thickness S	50	60	80	100	120	133	150	172	200	240
A	/	15	35	55	75	88	105	127	155	195
Steel sheet width	/	185	205	225	245	258	275	297	325	365

* The dimension A is adjusted to match the window thickness of 60 mm.
 For other window thicknesses the dimension A should be modified.

ITEM 8 | O240 | Drip flashing mask – top



Material: galvanised steel sheet 0,6 mm

Colour _____

L = _____ PIECE _____

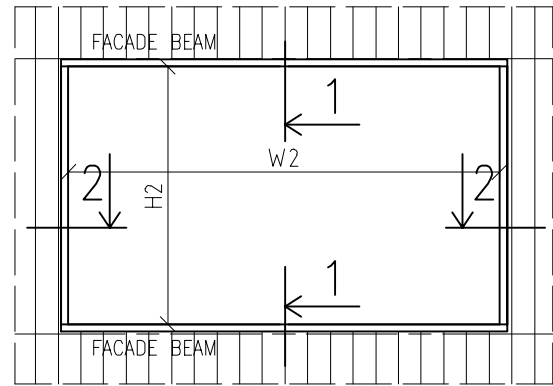
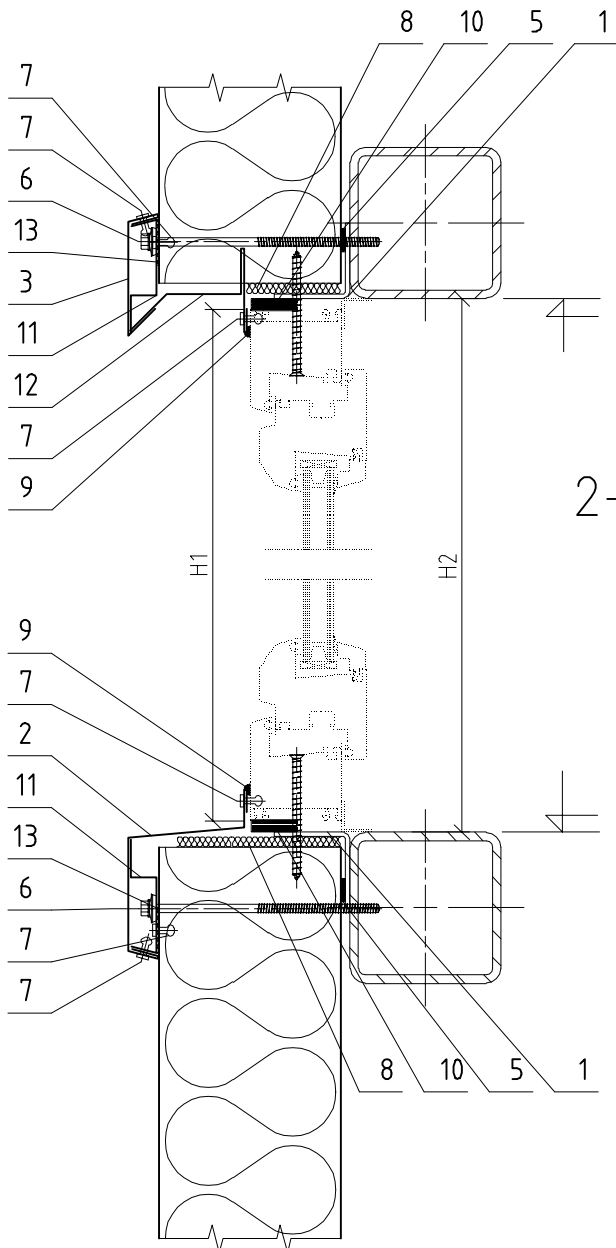
L = _____ PIECE _____

Panel thickness S	50	60	80	100	120	133	150	172	200	240
A*	/		25	45	65	78	95	117	145	185
Steel sheet width	/	99	104	124	144	157	174	196	224	264

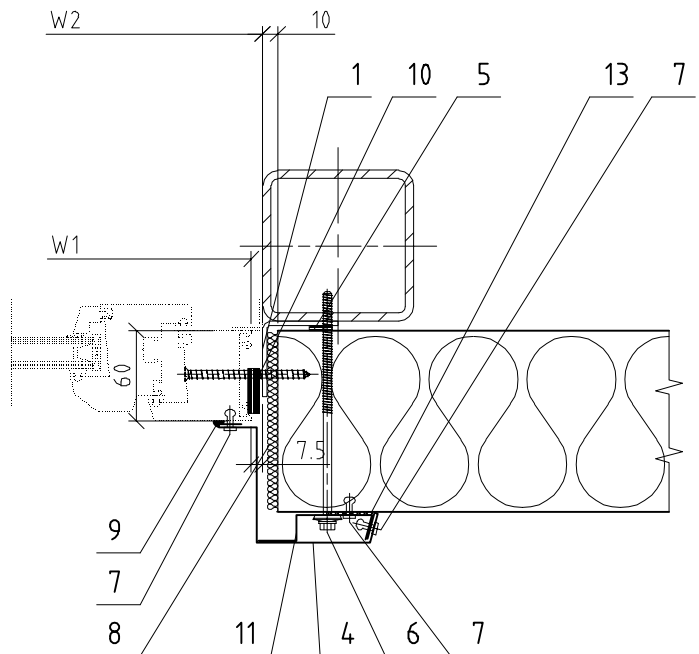
* The dimension is adjusted to window thickness of 60 mm.
For other window thicknesses the dimension A should be modified.

1-1

H1, W1 ... window external dimensions
 H2, W2 ... window clear space
 $H2 - H1 = 15$; $W2 - W1 = 15$;



2-2



NOTE:

- Detail assembly without a substructure is allowed only when Trimo technical department has prepared a prior static calculation.

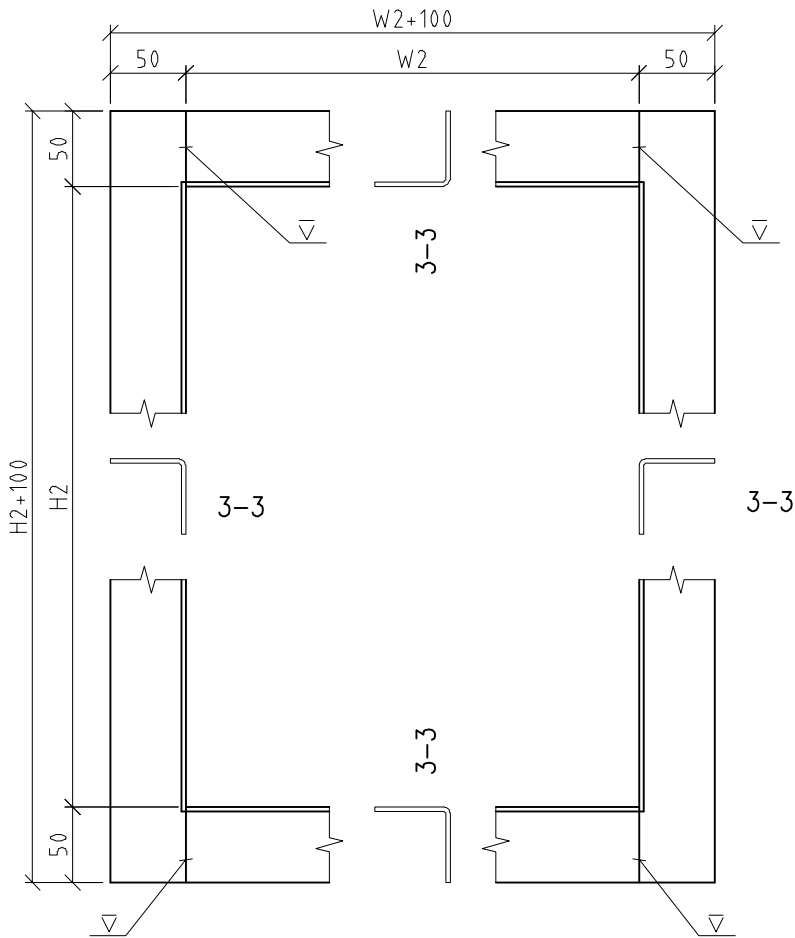
Item	Code	Description
1	N068	Support frame
2	O069	Window sill drip flashing
3	O076	Drip flashing mask
4	O069	Jamb flashing
5	T002	Sealing tape 3x15
6	V027	Self-tapping screw ____x____
7	K002	Blind rivet 4x10 (12 pcs/m)
8	W001	Thermal insulation
9	T006	Mastic seal
10	T016	Sealing tape 2/10x15 (during window installation)
11	O078	Flashing support
12	O084	Window head drip flashing
13	T004	Sealing tape EPDM 2x47 (under the screw)

Subject of detail are only positioned elements!

All details are the property of Trimo ©

INSTALLATION OF A WINDOW LARGER THAN THE PANEL WIDTH AD1/4

ITEM 1 | N068 | Support frame



NOTE:

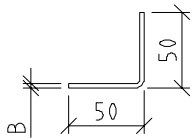
- The weld seam should be protected using a zinc-based paint.

Material: galvanised steel sheet B mm

(3-3) L = H2+100=_____ PIECE _____

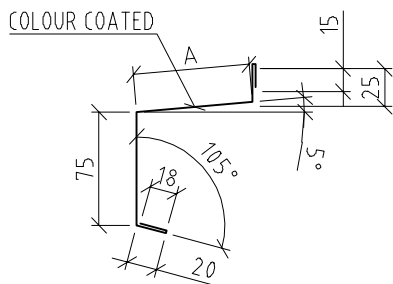
(3-3) L = W2=_____ PIECE _____

3-3



Panel thickness S	50	60	80	100	120	133	150	172	200	240
B	2	2	2	2	2	2	3	3	3	3
Steel sheet width (3-3)	96	96	96	96	96	96	94	94	94	94

ITEM 2 | 0069 | Window sill drip flashing



Material: galvanised steel sheet 0,6 mm

Colour _____

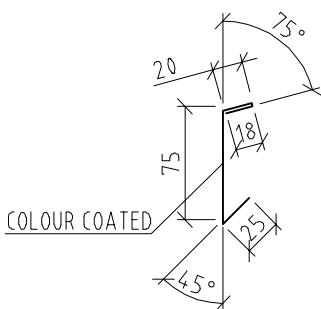
L = _____ PIECE _____

L = _____ PIECE _____

Panel thickness S	50	60	80	100	120	133	150	172	200	240
A*	10	17	37	57	77	90	107	129	157	197
Steel sheet width	163	170	190	210	230	243	260	282	310	350

* The dimension A is adjusted to match the window thickness of 60 mm.
For other window thicknesses the dimension A should be modified.

ITEM 3 | 0076 | Drip flashing mask



Material: galvanised steel sheet 0,6 mm

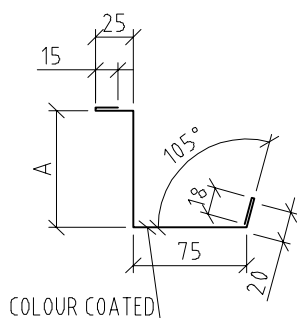
Colour _____

L = _____ PIECE _____

L = _____ PIECE _____

Steel sheet width ... 138

ITEM 4 | 0069 | Flashing support



Material: galvanised steel sheet 0,6 mm

Colour _____

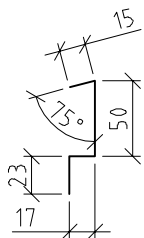
L = _____ PIECE _____

L = _____ PIECE _____

Panel thickness S	50	60	80	100	120	133	150	172	200	240
A*	/	17	37	57	77	90	107	129	157	197
Steel sheet width	/	170	190	210	230	243	260	282	310	350

* The dimension A is adjusted to match the window thickness of 60 mm.
For other window thicknesses the dimension A should be modified.

ITEM 11 | 0078 | Flashing support



Material: galvanised steel sheet 0,7 mm

L = _____ PIECE _____

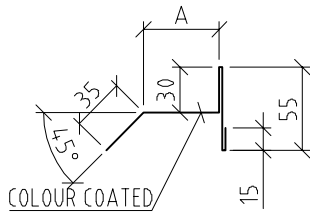
L = _____ PIECE _____

Steel sheet width ... 105

ITEM 12 | 0084 | Window head drip flashing

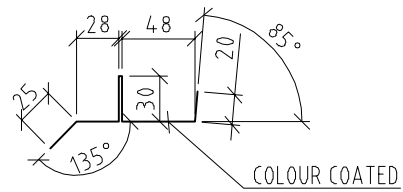
NOTE:

- For panels of a 100 mm thickness and more.



NOTE:

- For panel thickness of 80 mm.



Material: galvanised steel sheet 0,6 mm

L = _____ PIECE _____

L = _____ PIECE _____

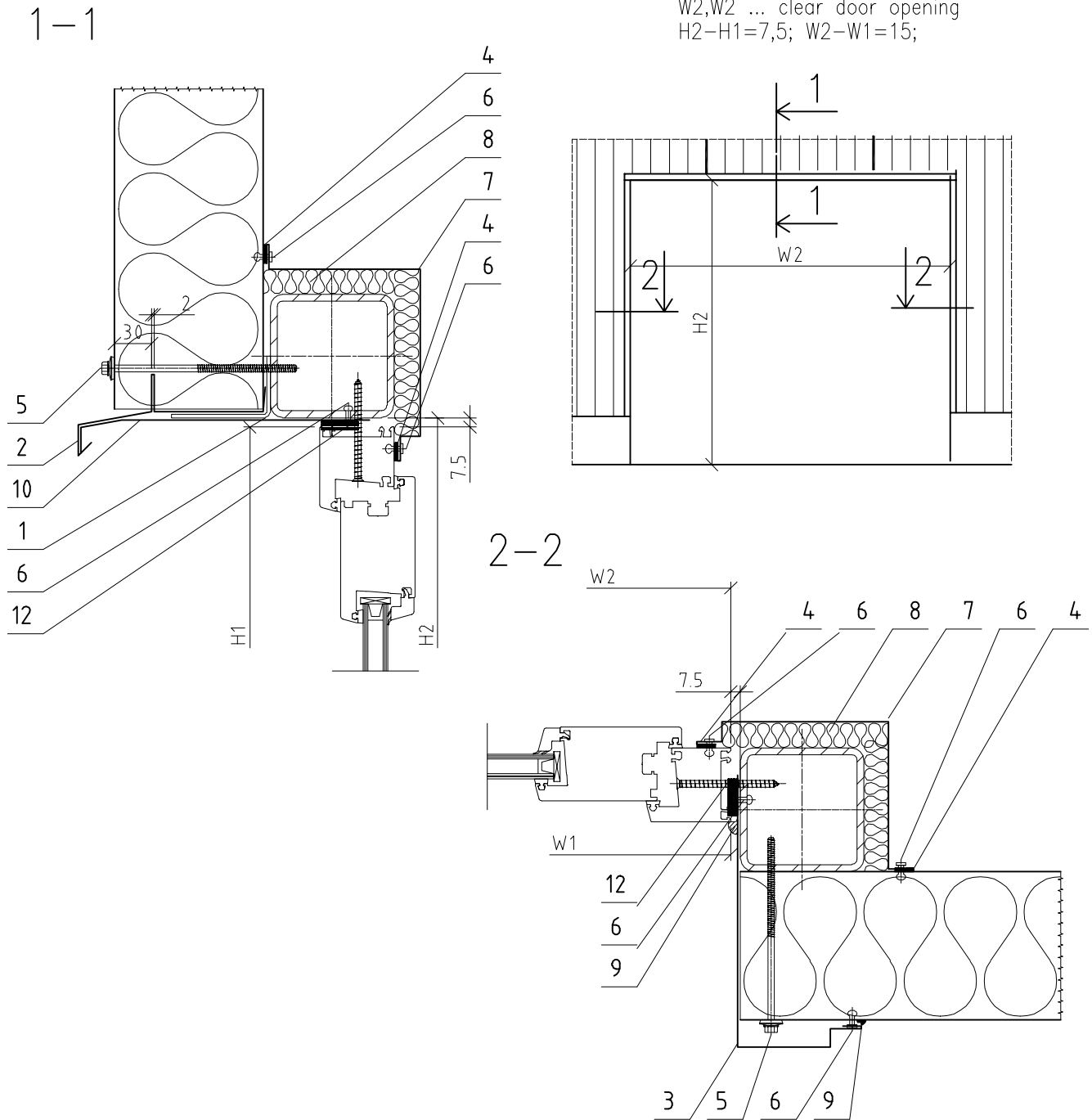
Panel thickness S	50	60	80	100	120	133	150	172	200	240
A*	/	**		30	50	63	80	102	130	170
Steel sheet width	/	**	180	165	185	198	215	237	265	305

* The dimension A is adjusted to match the window thickness of 60 mm.

For other window thicknesses the dimension A should be modified.

** Butyl tape on aluminium foil should be used for 60 mm thick panels instead of the drip flashing.

H1, W1 ... door – external dimensions
 W2,W2 ... clear door opening
 $H2-H1=7,5$; $W2-W1=15$;

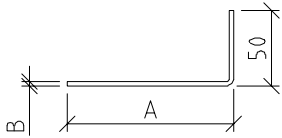


Item	Code	Description
1	N068	Panel support profile
2	O100	Drip flashing
3	O549	Jamb flashing
4	T002	Sealing tape 3x15
5	V027	Self-tapping screws ____x____
6	K002	Blind rivet 4x10 (10 pcs/m)
7	O110	Inner door flashing
8	W001	Thermal insulation
9	T006	Mastic seal
10	O566	Door head mask
11	T016	Sealing tape 2/10x15 (during door assembly)

Subject of detail are only positioned elements!

All details are the property of Trimo©

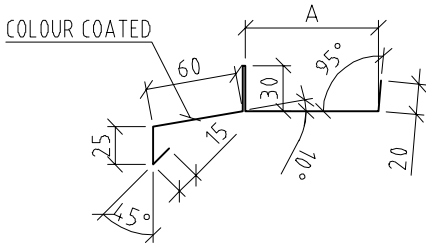
ITEM 1 | N068 | Panel support profile



Material: galvanised steel sheet B mm
 L = _____ PIECE _____
 L = _____ PIECE _____

Panel thickness S	50	60	80	100	120	133	150	172	200	240
A	20	30	40	60	80	93	110	132	160	200
B	2	2	2	2	2	2	3	3	3	3
Steel sheet width	66	76	86	106	126	139	154	176	204	244

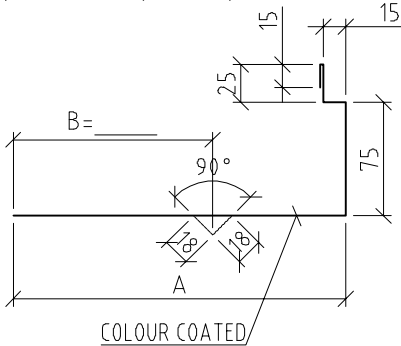
ITEM 2 | O100 | Drip flashing



Material: galvanised steel sheet 0,6 mm
 Colour _____
 L = _____ PIECE _____
 L = _____ PIECE _____

Panel thickness S	50	60	80	100	120	133	150	172	200	240
A	/		48	68	88	101	118	140	168	208
Steel sheet width	/	208	228	248	268	281	298	320	348	388

ITEM 3 | O549 | Jamb flashing

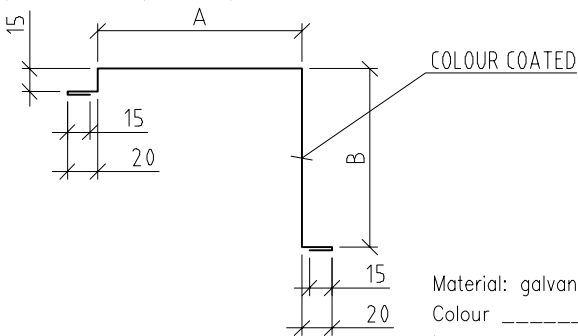


NOTE:
 - For panel thicknesses 150, 172, 200 and 240 mm strengthening of flashing is required!

Material: galvanised steel sheet 0,6 mm
 Colour _____
 L = _____ PIECE _____
 L = _____ PIECE _____

Steel sheet width ... A + 130

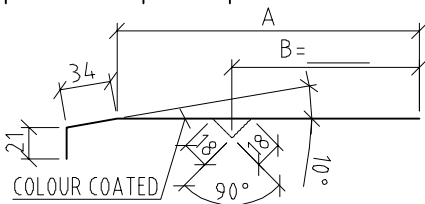
ITEM 7 | O110 | Inner door flashing



Material: galvanised steel sheet 0,6 mm
 Colour _____
 L = _____ PIECE _____
 L = _____ PIECE _____

Steel sheet width ... A + B + 85

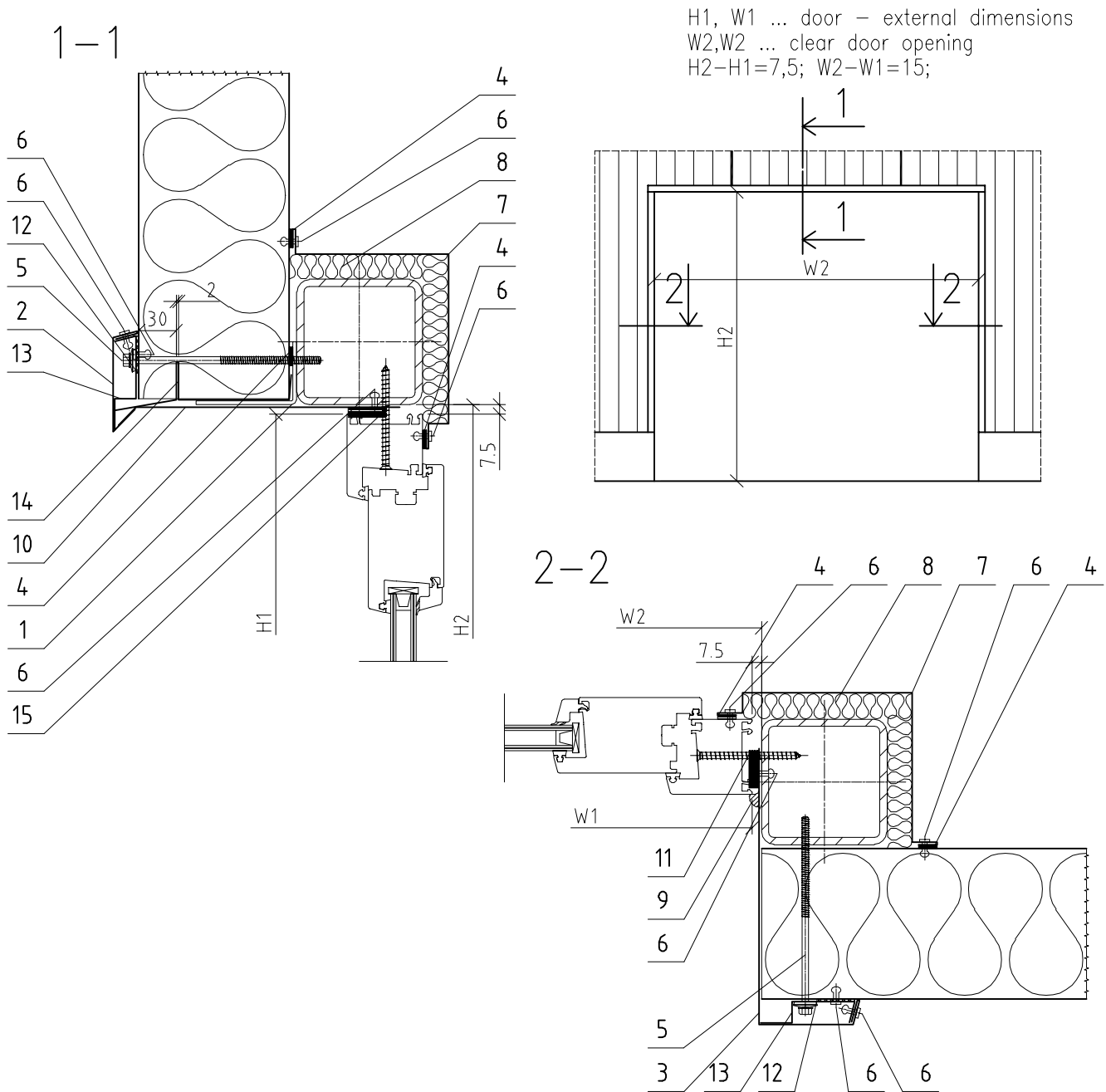
ITEM 10 | O566 | Door head mask



NOTE:
 - For panel thickness 150, 172, 200 and 240 mm strengthening of flashing is required!

Material: galvanised steel sheet 0,6 mm
 Colour _____
 L = _____ PIECE _____
 L = _____ PIECE _____

Steel sheet width ... A + 95

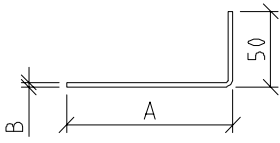


Item	Code	Description
1	N013	Panel support profile
2	O076	Drip flashing mask
3	O545	Jamb flashing
4	T002	Sealing tape 3x15
5	V027	Self-tapping screw _____x_____
6	K002	Blind rivet 4x10 (10 pcs/m)
7	O110	Inner door flashing
8	W001	Thermal insulation
9	T006	Mastic seal
10	O568	Door head mask
11	T016	Sealing tape 2/10x15 (during door assembly)
12	T004	Sealing tape EPDM 2x47
13	O078	Flashing support
14	O155	Drip flashing

Subject of detail are only positioned elements!

All details are the property of Trimo ©

ITEM 1 | N063 | Panel support profile

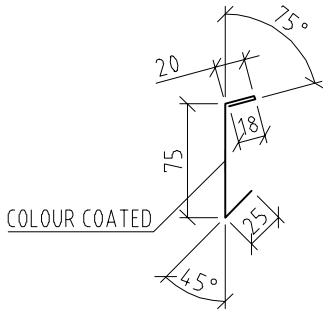


Material: galvanised steel sheet B mm

L = _____ PIECE _____
 L = _____ PIECE _____

Panel thickness S	50	60	80	100	120	133	150	172	200	240
A	20	30	40	60	80	93	110	132	160	200
B	2	2	2	2	2	2	3	3	3	3
Steel sheet width	66	76	86	106	126	139	154	176	204	244

ITEM 2 | 0076 | Drip flashing mask



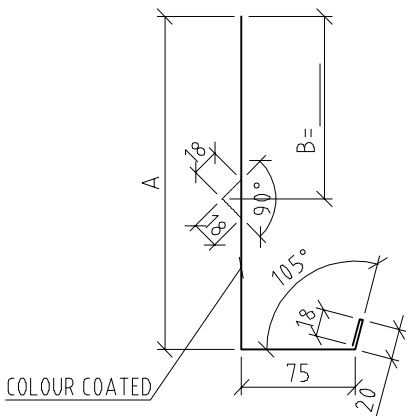
Material: galvanised steel sheet 0,6 mm

Colour _____

L = _____ PIECE _____
 L = _____ PIECE _____

Steel sheet width ... 138

ITEM 3 | 0545 | Jamb flashing



NOTE:

- For panel thickness 150, 172, 200 and 240 mm strengthening of flashing is required!

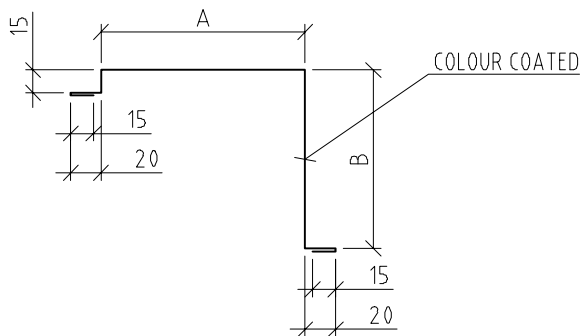
Material: galvanised steel sheet 0,6 mm

Colour _____

L = _____ PIECE _____
 L = _____ PIECE _____

Steel sheet width ... A + 113

ITEM 7 | 0110 | Inner door flashing



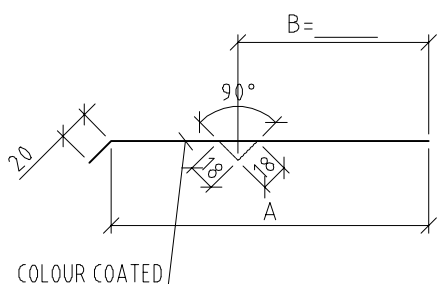
Material: galvanised steel sheet 0,6 mm

Colour _____

L = _____ PIECE _____
 L = _____ PIECE _____

Steel sheet width ... A + B + 85

ITEM 10 | 0568 | Door head mask



NOTE:

- For panel thickness 150, 172, 200 and 240 mm strengthening of flashing is requ

Material: galvanised steel sheet 0,6 mm

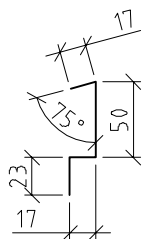
Colour _____

L = _____ PIECE _____

L = _____ PIECE _____

Steel sheet width ... A + 20

ITEM 13 | 0078 | Flashing support



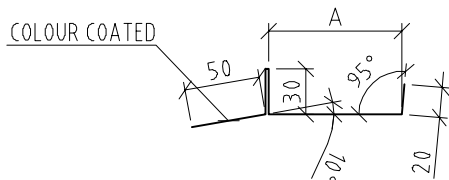
Material: galvanised steel sheet 0,7 mm

L = _____ PIECE _____

L = _____ PIECE _____

Steel sheet width ... 105

ITEM 14 | 0155 | Drip flashing



Material: galvanised steel sheet 0,6 mm

Colour _____

L = _____ PIECE _____

L = _____ PIECE _____

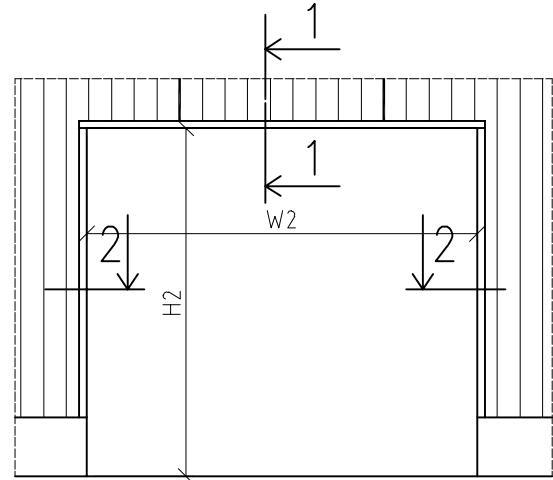
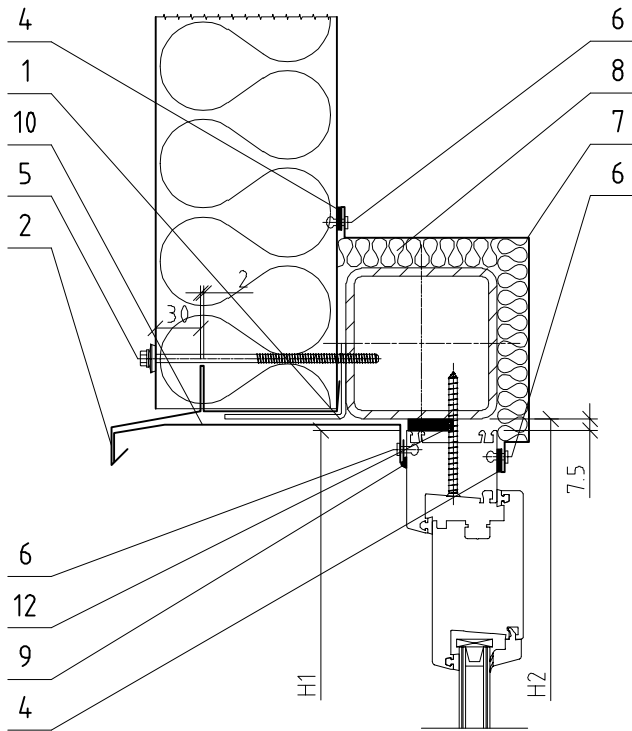
Panel thickness S	50	60	80	100	120	133	150	172	200	240
A	18	28	48	68	88	101	118	140	168	208
Steel sheet width	148	158	178	198	218	131	248	270	298	338

VERTICAL FACADE SYSTEM

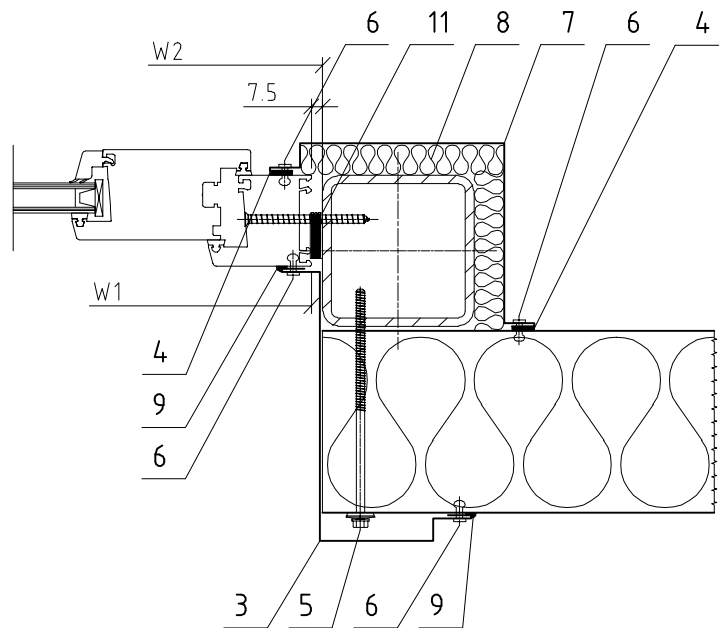
53

H1, W1 ... door – external dimensions
 W2, H2 ... clear door opening
 $H2 - H1 = 7,5$; $W2 - W1 = 15$;

1-1



2-2

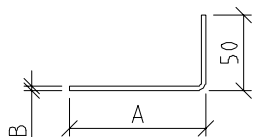


Item	Code	Description
1	N014	Panel support profile
2	O100	Drip flashing
3	O109	Jamb flashing
4	T002	Sealing tape 3x15
5	V027	Self-tapping screw ____x____
6	K002	Blind rivet 4x10 (10 pcs/m)
7	O110	Inner door flashing
8	W001	Thermal insulation
9	T006	Mastic seal
10	O108	Door head mask
11	T016	Sealing tape 2/10x15 (during door assembly)

Subject of detail are only positioned elements!

All details are the property of Trimo®

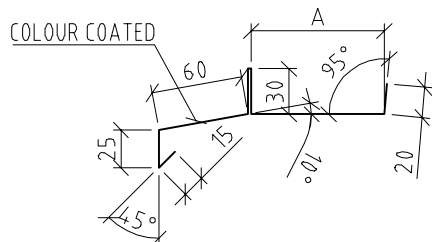
ITEM 1 | N014 | Panel support – profile



Material: galvanised steel sheet B mm
 L = _____ PIECE _____
 L = _____ PIECE _____

Panel thickness S	50	60	80	100	120	133	150	172	200	240
A	20	30	40	60	80	93	110	132	160	200
B	2	2	2	2	2	2	3	3	3	3
Steel sheet width	66	76	86	106	126	139	154	176	204	244

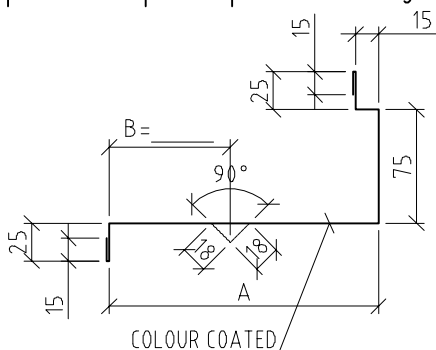
ITEM 2 | O100 | Drip flashing



Material: galvanised steel sheet 0,6 mm
 Colour _____
 L = _____ PIECE _____
 L = _____ PIECE _____

Panel thickness S	50	60	80	100	120	133	150	172	200	240
A	/	28	48	68	88	101	118	140	168	208
Steel sheet width	/	208	228	248	268	281	298	320	348	388

ITEM 3 | O109 | Jamb flashing

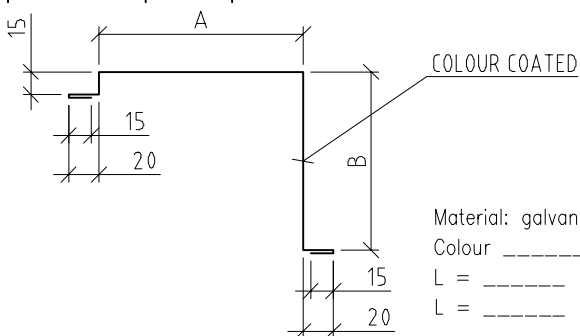


NOTE:
 - For panel thickness 150, 172, 200 and 240 mm strengthening of flashing is required!

Material: galvanised steel sheet 0,6 mm
 Colour _____
 L = _____ PIECE _____
 L = _____ PIECE _____

Steel sheet width ... A + 170

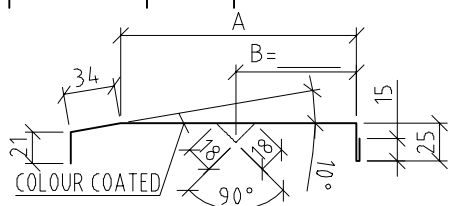
ITEM 7 | O110 | Inner door flashing



Material: galvanised steel sheet 0,6 mm
 Colour _____
 L = _____ PIECE _____
 L = _____ PIECE _____

Steel sheet width ... A + B + 85

ITEM 10 | O108 | Door head mask



NOTE:
 - For panel thickness 150, 172, 200 and 240 mm strengthening of flashing is required!

Material: galvanised steel sheet 0,6 mm
 Colour _____
 L = _____ PIECE _____
 L = _____ PIECE _____

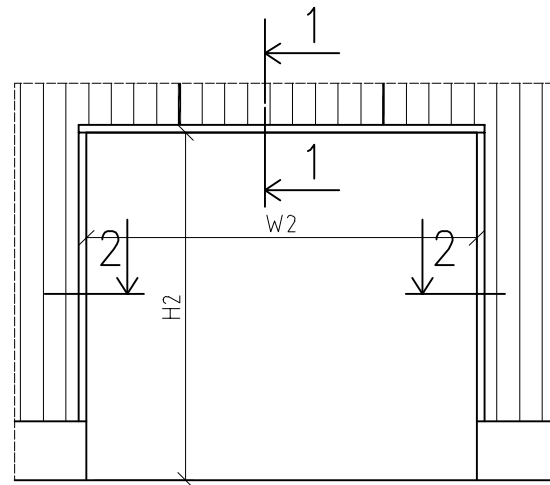
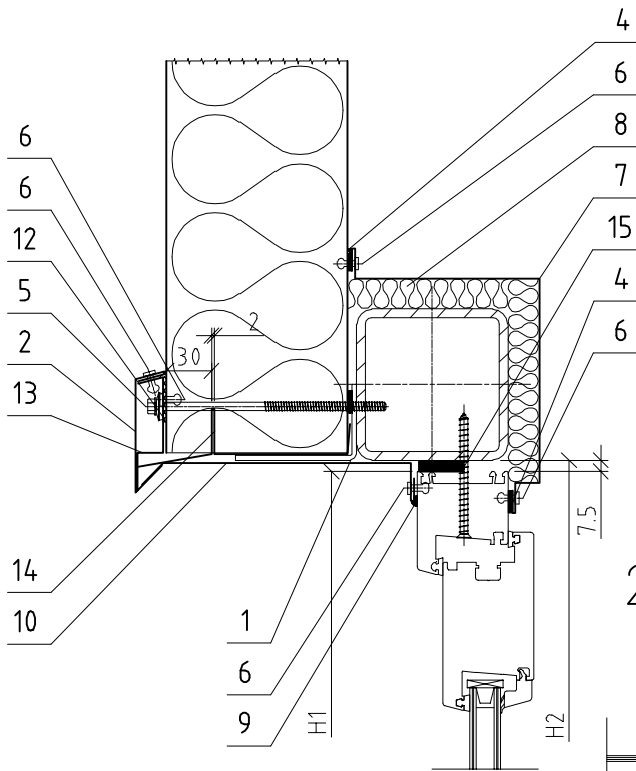
Steel sheet width ... A + 95

VERTICAL FACADE SYSTEM

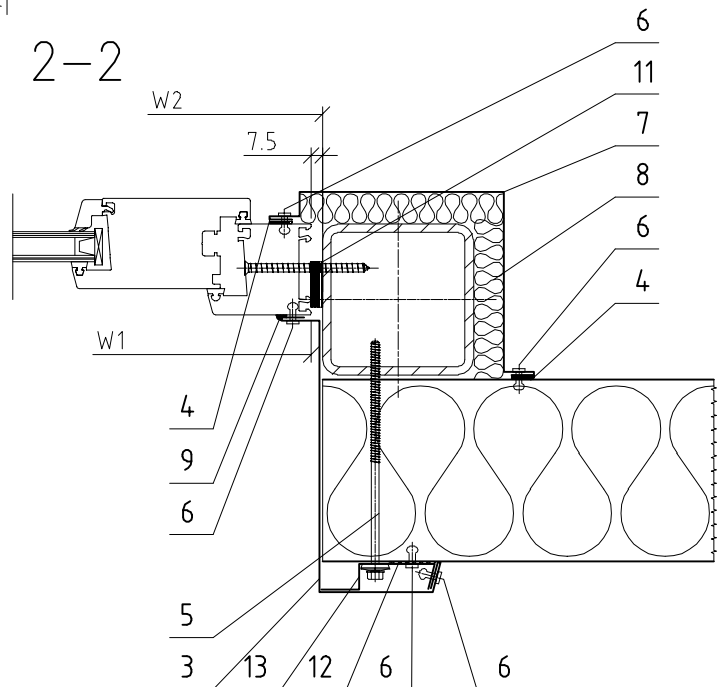
55

1-1

H1, W1 ... door – external dimensions
 W2, H2 ... clear door opening
 $H2 - H1 = 7,5$; $W2 - W1 = 15$;



2-2



Item	Code	Description
------	------	-------------

1	N013	Panel support profile
2	O076	Drip flashing
3	O111	Jamb flashing
4	T001	Sealing tape 3x15
5	V027	Self-tapping screw _____x_____
6	K002	Blind rivet 4x10 (10 pcs/m)
7	O110	Inner door flashing
8	W001	Thermal insulation
9	T006	Mastic seal
10	O131	Door head mask
11	T016	Sealing tape 2/10x15 (during door assembly)
12	T004	Sealing tape EPDM 2x47
13	O078	Flashing support
14	O155	Drip flashing

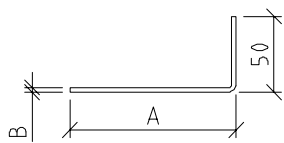
Subject of detail are only positioned elements!

All details are the property of Trimo®

DOOR OPENING WITH A SUBSTRUCTURE

AD2/4

ITEM 1 | N063 | Panel support profile

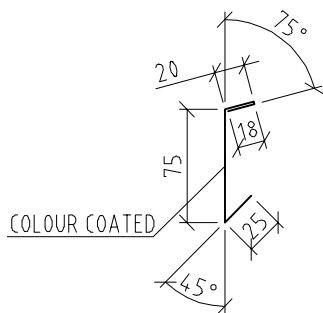


Material: galvanised steel sheet B mm

L = _____ PIECE _____
 L = _____ PIECE _____

Panel thickness S	50	60	80	100	120	133	150	172	200	240
A	20	30	40	60	80	93	110	132	160	200
B	2	2	2	2	2	2	3	3	3	3
Steel sheet width	66	76	86	106	126	139	154	176	204	244

ITEM 2 | O076 | Drip flashing



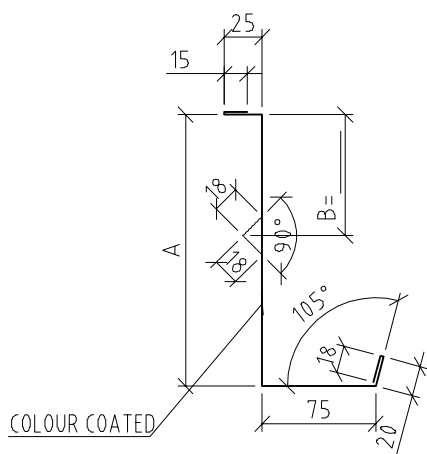
Material: galvanised steel sheet 0,6 mm

Colour _____

L = _____ PIECE _____
 L = _____ PIECE _____

Steel sheet width ... 138

ITEM 3 | O111 | Jamb flashing



NOTE:

- For panel thickness 150, 172, 200 and 240 mm strengthening of flashing is required!

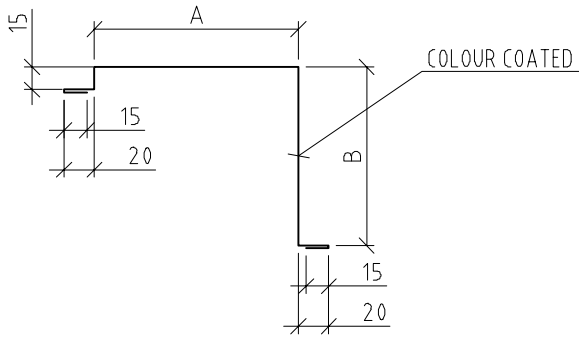
Material: galvanised steel sheet 0,6 mm

Colour _____

L = _____ PIECE _____
 L = _____ PIECE _____

Steel sheet width ... A + 153

ITEM 7 | 0110 | Inner door flashing



Material: galvanised steel sheet 0,6 mm

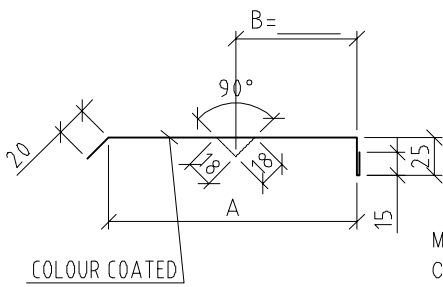
Colour _____

L = _____ PIECE _____

L = _____ PIECE _____

Steel sheet width ... $A + B + 85$

ITEM 10 | 0131 | Door head mask



NOTE:

- For panel thickness 150, 172, 200 and 240 mm strengthening of flashing is required!

Material: galvanised steel sheet 0,6 mm

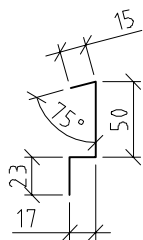
Colour _____

L = _____ PIECE _____

L = _____ PIECE _____

Steel sheet width ... $A + 60$

ITEM 13 | 0078 | Flashing support



Material: galvanised steel sheet 0,7 mm

L = _____ PIECE _____

L = _____ PIECE _____

Steel sheet width ... 105

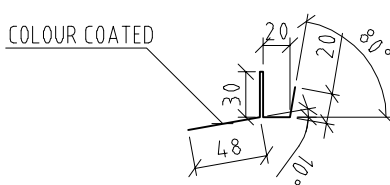
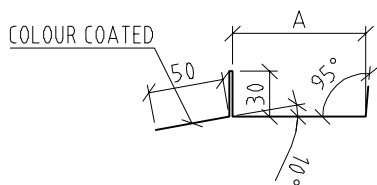
ITEM 14 | 0155 | Drip flashing

NOTE:

- For panels of 60 mm thickness or more.

NOTE:

- For panel of 50 mm thickness.



Material: galvanised steel sheet 0,6 mm

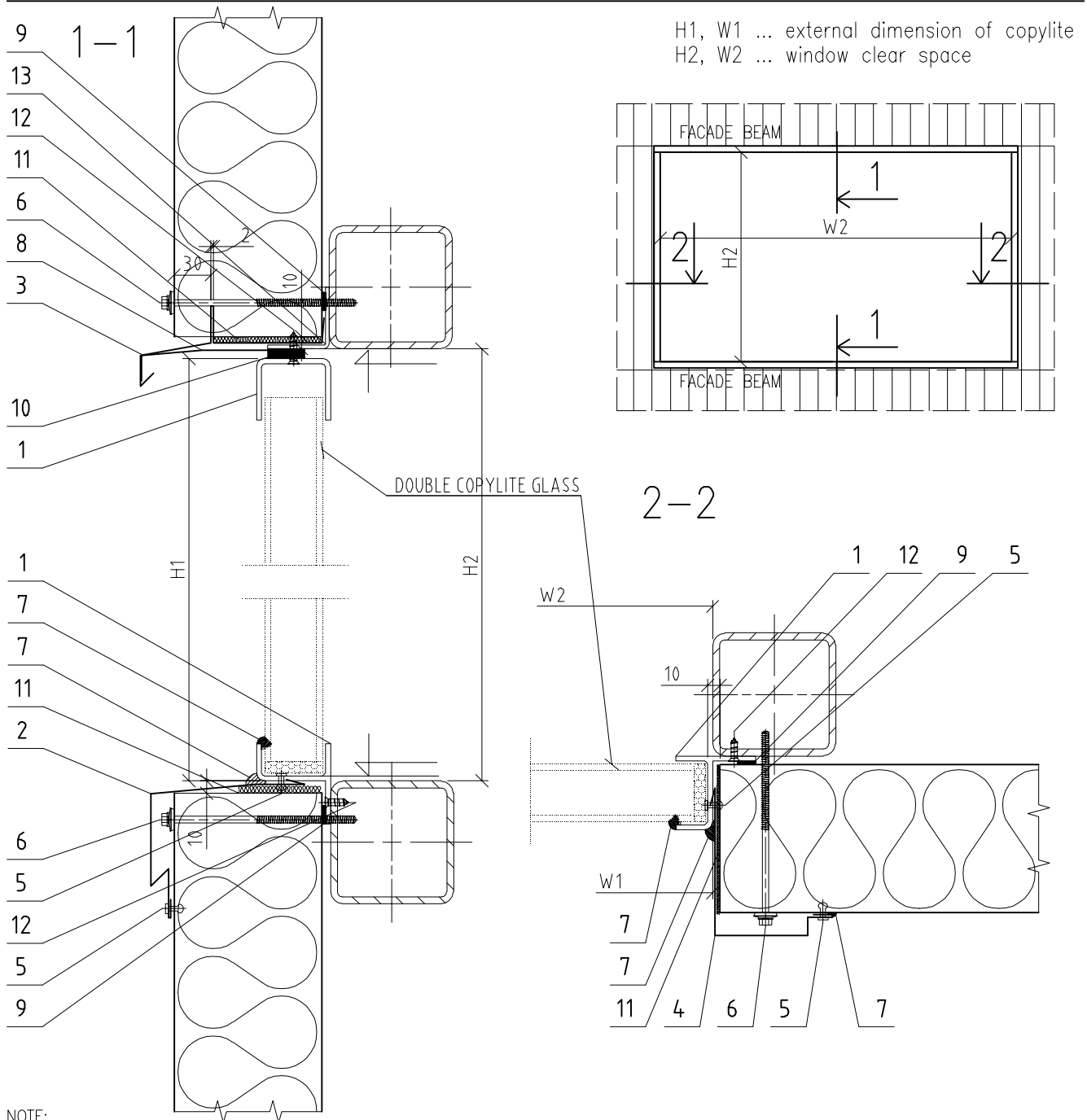
Colour _____

L = _____ PIECE _____

L = _____ PIECE _____

Panel thickness S	50	60	80	100	120	150	200	240
A	18	28	48	68	88	118	168	208
Steel sheet width	148	158	178	198	218	248	298	338

VERTICAL FACADE SYSTEM



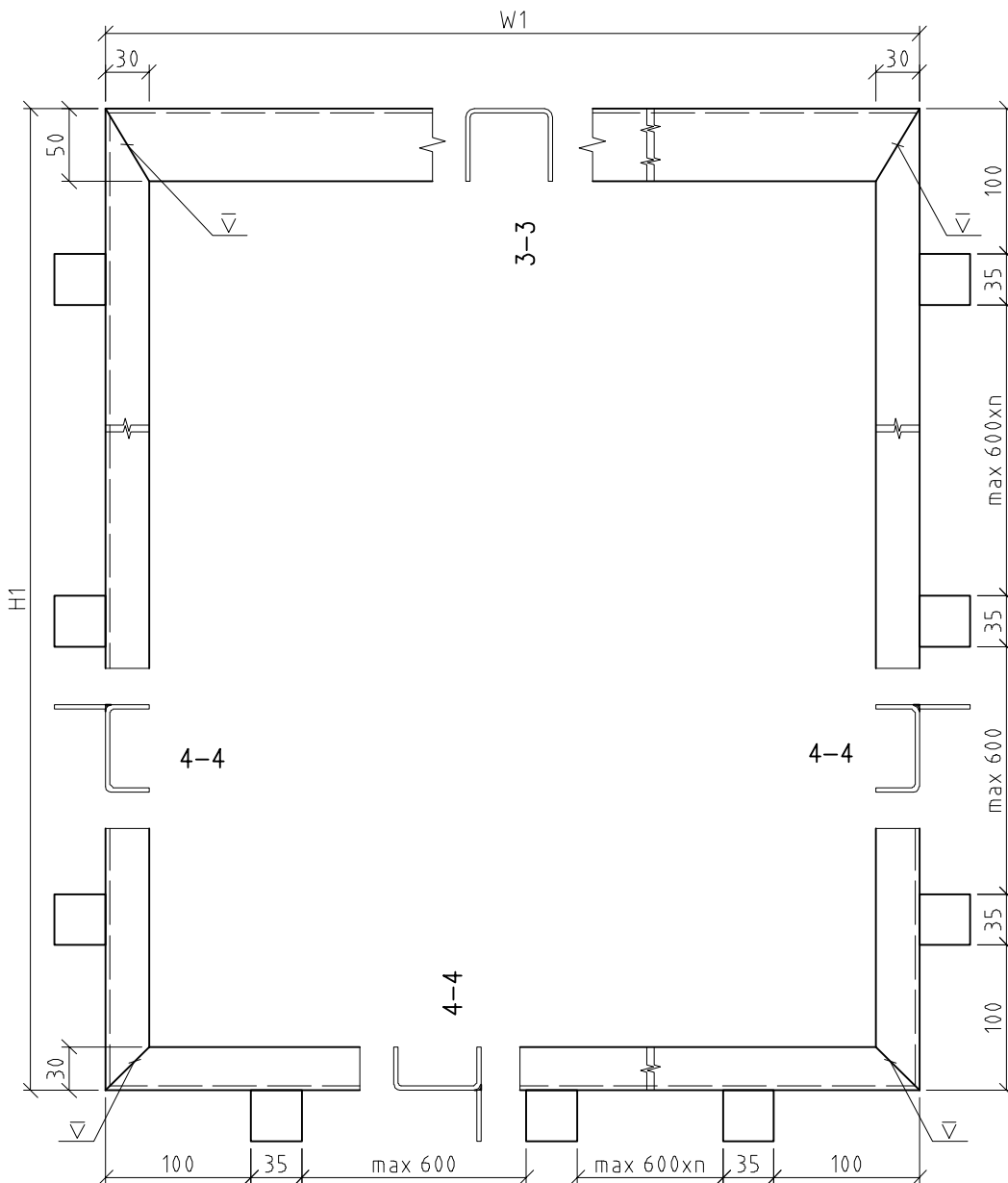
Item	Code	Description
------	------	-------------

1	N108	Copylite opening support
2	O294	Window sill drip flashing
3	O231	Window head drip flashing
4	O303	Jamb flashing
5	K002	Blind rivet 4x10 (12 pcs/m)
6	V027	Self-tapping screw ___x___
7	T006	Mastic seal
8	O285	Drip flashing mask - top
9	T002	Sealing tape 3x15
10	T016	Sealing tape 2/10x15 (during window installation)
11	W001	Thermal insulation
12	V059	Self-tapping screw 4,8x13
13	N068	Panel support profile (copylite)

Subject of detail are only positioned elements!

All details are the property of Trimo©

ITEM 1 | N108 | Copylite opening support

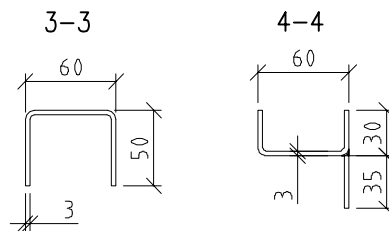


NOTE:

- The weld seam should be protected using a zinc-based paint.

Material: galvanised steel sheet 3 mm

- (3-3) L = W1= _____ PIECE _____
- (4-4) L = H2= _____ PIECE _____
- (4-4) L = W1= _____ PIECE _____

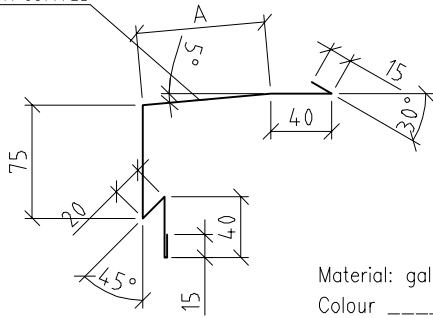


Steel sheet width (3-3)	148
Steel sheet width (4-4)	108

Ver. 2.2 - March 2015 Note: All rights to alterations reserved! A designer is responsible for any changes in details!

ITEM 2 | 0294 | Window sill drip flashing

COLOUR COATED



Material: galvanised steel sheet 0,6 mm

Colour _____

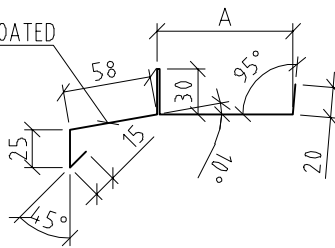
L = _____ PIECE _____

L = _____ PIECE _____

Panel thickness S	50	60	80	100	120	133	150	172	200	240
A*	/	25	45	65	85	98	115	137	165	205
Steel sheet width	/	230	250	270	290	303	320	342	370	410

ITEM 3 | 0231 | Window head drip flashing

COLOUR COATED



Material: galvanised steel sheet 0,6 mm

Colour _____

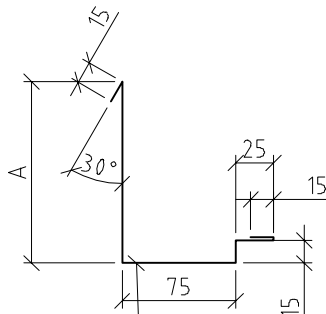
L = _____ PIECE _____

L = _____ PIECE _____

Panel thickness S	50	60	80	100	120	133	150	172	200	240
A	/	28	48	68	88	101	118	140	168	208
Steel sheet width	/	208	228	248	268	281	298	320	348	388

ITEM 4 | 0303 | Jamb flashing

COLOUR COATED



Material: galvanised steel sheet 0,6 mm

Colour _____

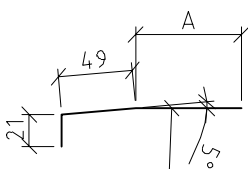
L = _____ PIECE _____

L = _____ PIECE _____

Panel thickness S	50	60	80	100	120	133	150	172	200	240
A*	/	60	80	100	120	133	150	172	200	240
Steel sheet width	/	205	225	245	265	263	295	302	345	385

ITEM 8 | 0285 | Drip flashing mask – top

COLOUR COATED



Material: galvanised steel sheet 0,6 mm

Colour _____

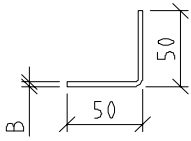
L = _____ PIECE _____

L = _____ PIECE _____

Panel thickness S	50	60	80	100	120	133	150	172	200	240
A*	/	10	30	50	70	83	100	122	150	190
Steel sheet width	/	80	100	120	140	153	170	192	220	260

Ver. 2.2 - March 2015 Note: All rights to alterations reserved! A designer is responsible for any changes in details!

ITEM 13 | N068 | Panel support profile (copolite)



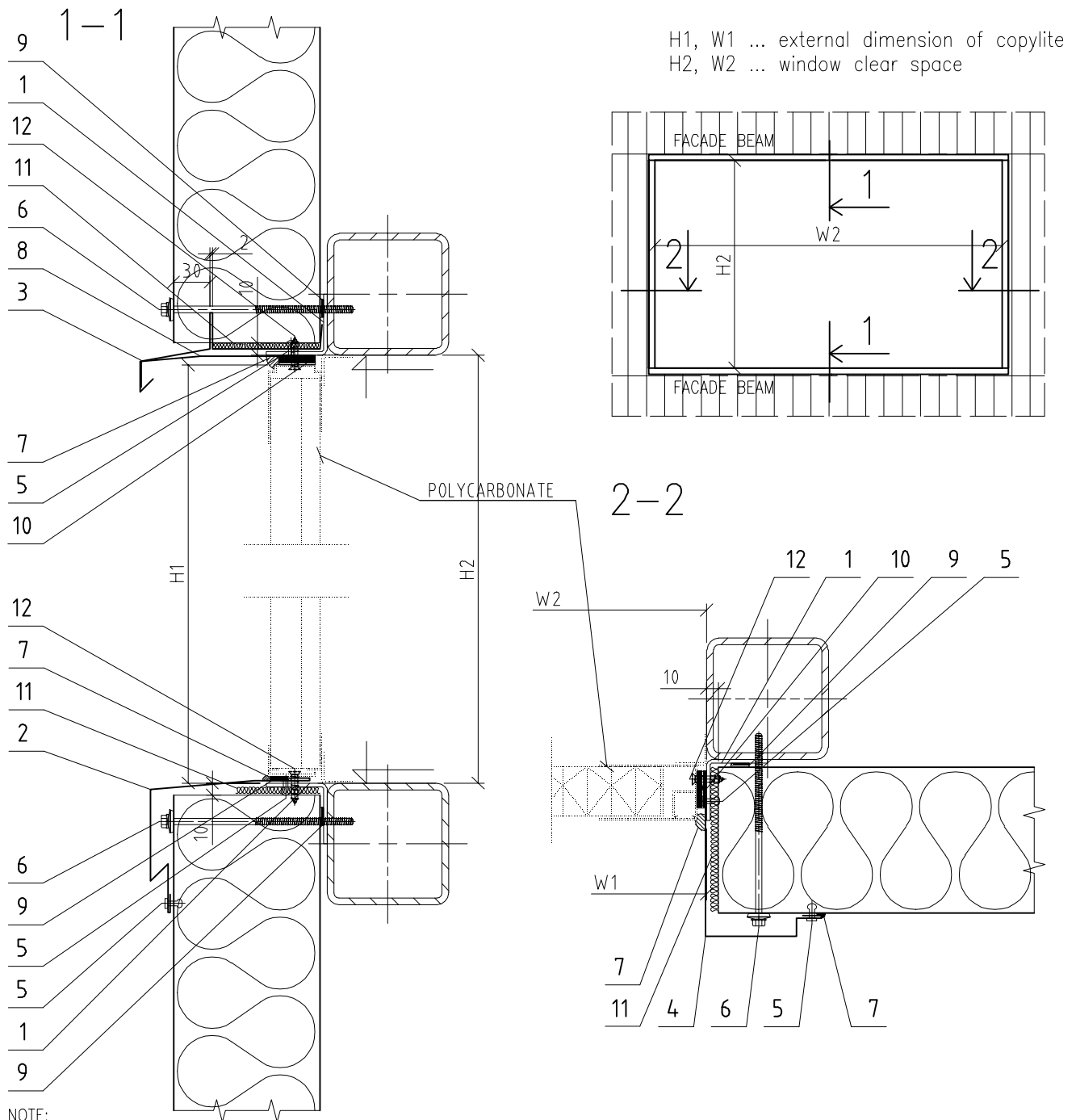
Material: galvanised steel sheet B mm

L = ----- PIECE -----

L = ----- PIECE -----

Panel thickness S	50	60	80	100	120	133	150	172	200	240
B	2	2	2	2	2	2	3	3	3	3
Steel sheet width	96	96	96	96	96	96	94	94	94	94

VERTICAL FACADE SYSTEM



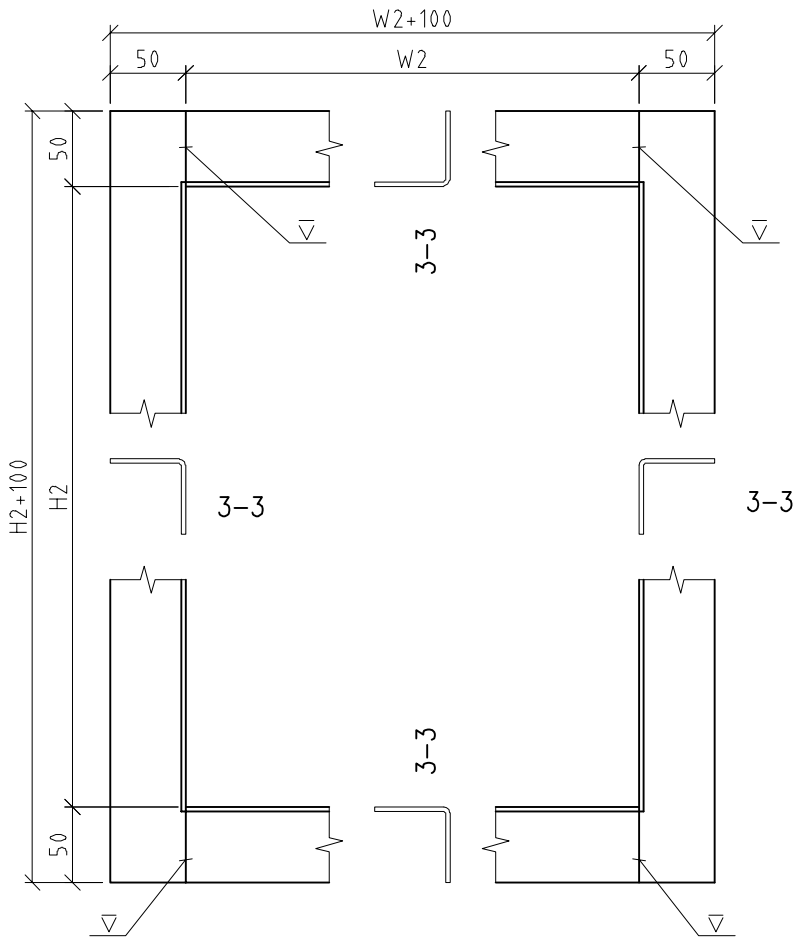
- Detail assembly without a substructure is allowed only when Trimo technical department has prepared a prior static calculation.
- Application of the detail is limited due to danger of condensation on the glazing.

Item	Code	Description
1	N108	Support frame
2	O459	Window sill drip flashing
3	O231	Window head drip flashing
4	O303	Jamb flashing
5	K002	Blind rivet 4x10 (12 pcs/m)
6	V027	Self-tapping screw ____x____
7	T006	Mastic seal
8	O458	Drip flashing mask - top
9	T002	Sealing tape 3x15
10	T016	Sealing tape 2/10x15 (during polycarbonate installation)
11	W001	Thermal insulation
12	V059	Self-tapping screw 4,8x13

Subject of detail are only positioned elements!

All details are the property of Trimo©

ITEM 1 | N108 | Support frame



NOTE:

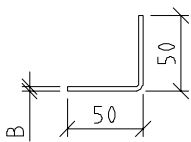
- The weld seam should be protected using a zinc-based paint.

Material: galvanised steel sheet B mm

(3-3) L = H2+100=_____ PIECE _____

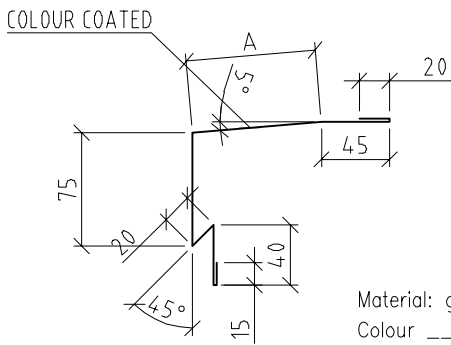
(3-3) L = W2=_____ PIECE _____

3-3



Panel thickness S	50	60	80	100	120	133	150	172	200	240
B	2	2	2	2	2	2	3	3	3	3
Steel sheet width (3-3)	96	96	96	96	96	96	94	94	94	94

ITEM 2 | 0459 | Window sill drip flashing

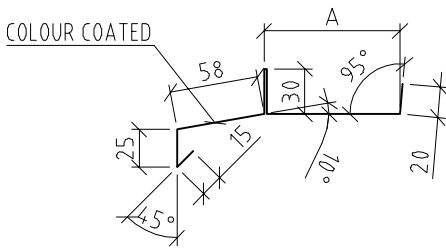


Material: galvanised steel sheet 0,6 mm

Colour _____
 L = _____ PIECE _____
 L = _____ PIECE _____

Panel thickness S	50	60	80	100	120	133	150	172	200	240
A	/	25	45	65	85	98	115	137	165	205
Steel sheet width	/	240	260	280	300	313	330	352	380	420

ITEM 3 | 0231 | Window head drip flashing FTV



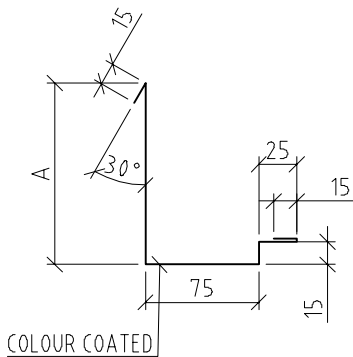
Material: galvanised steel sheet 0,6 mm

Colour _____
 L = _____ PIECE _____
 L = _____ PIECE _____

Panel thickness S
 A
 Steel sheet width

Panel thickness S	50	60	80	100	120	133	150	172	200	240
A	/	28	48	68	88	101	118	140	168	208
Steel sheet width	/	208	228	248	268	281	298	320	348	388

ITEM 4 | 0303 | Jamb flashing

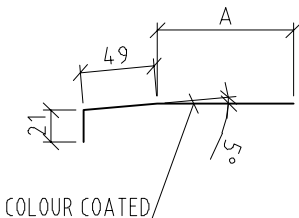


Material: galvanised steel sheet 0,6 mm

Colour _____
 L = _____ PIECE _____
 L = _____ PIECE _____

Panel thickness S	50	60	80	100	120	133	150	172	200	240
A	/	60	80	100	120	133	150	172	200	240
Steel sheet width	/	205	225	245	265	263	295	302	345	385

ITEM 8 | 0458 | Drip flashing mask – top

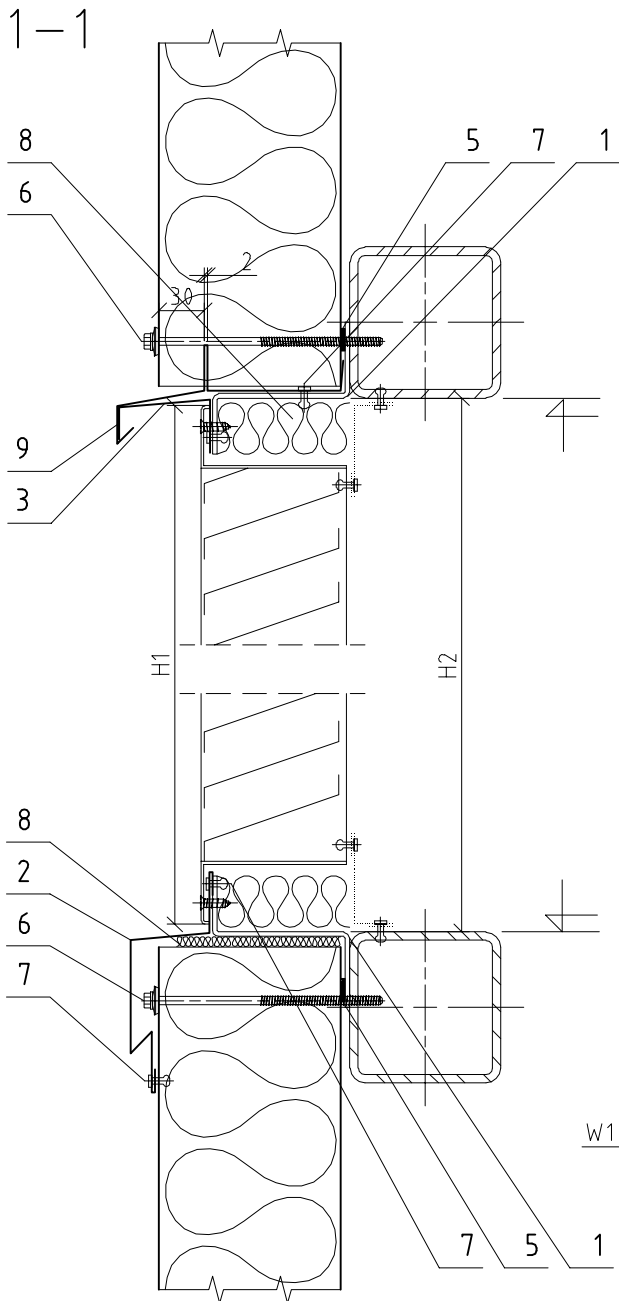


Material: galvanised steel sheet 0,6 mm

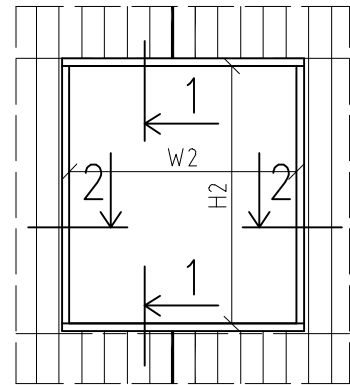
Colour _____
 L = _____ PIECE _____
 L = _____ PIECE _____

Panel thickness S	50	60	80	100	120	133	150	172	200	240
A	/	10	30	50	70	83	100	122	150	190
Steel sheet width	/	80	100	120	140	153	170	192	220	260

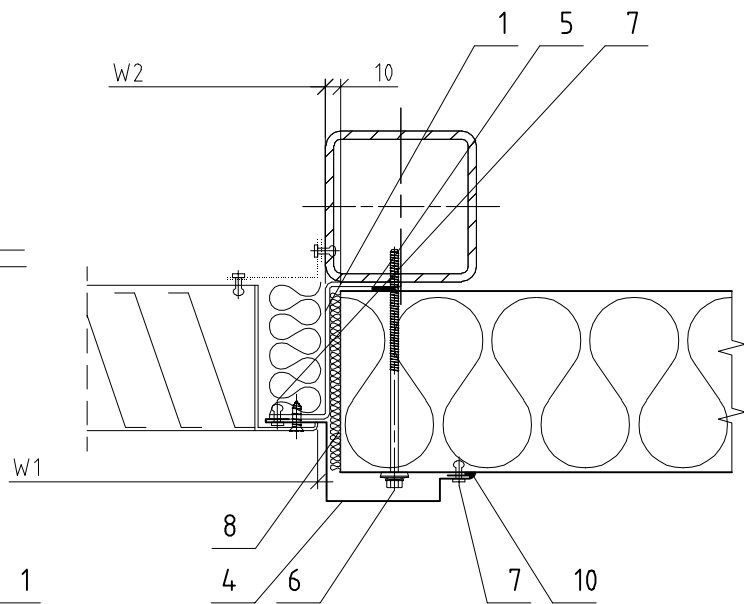
VERTICAL FACADE SYSTEM



H1, W1 ... frame external dimensions
 H2, W2 ... window clear space
 $H2 - H1 = 15$; $W2 - W1 = 15$;



2-2



NOTE:

- Installation of the detail without a substructure is allowed only with a prior static calculation prepared by Trimo technical department.
- Window blinds are installed by the buyer together with the necessary flashings.
- It is recommended to install the blinds into one panel as tightness is to be assured.
- Flashings are to be adjusted to match the blinds' frame and place.

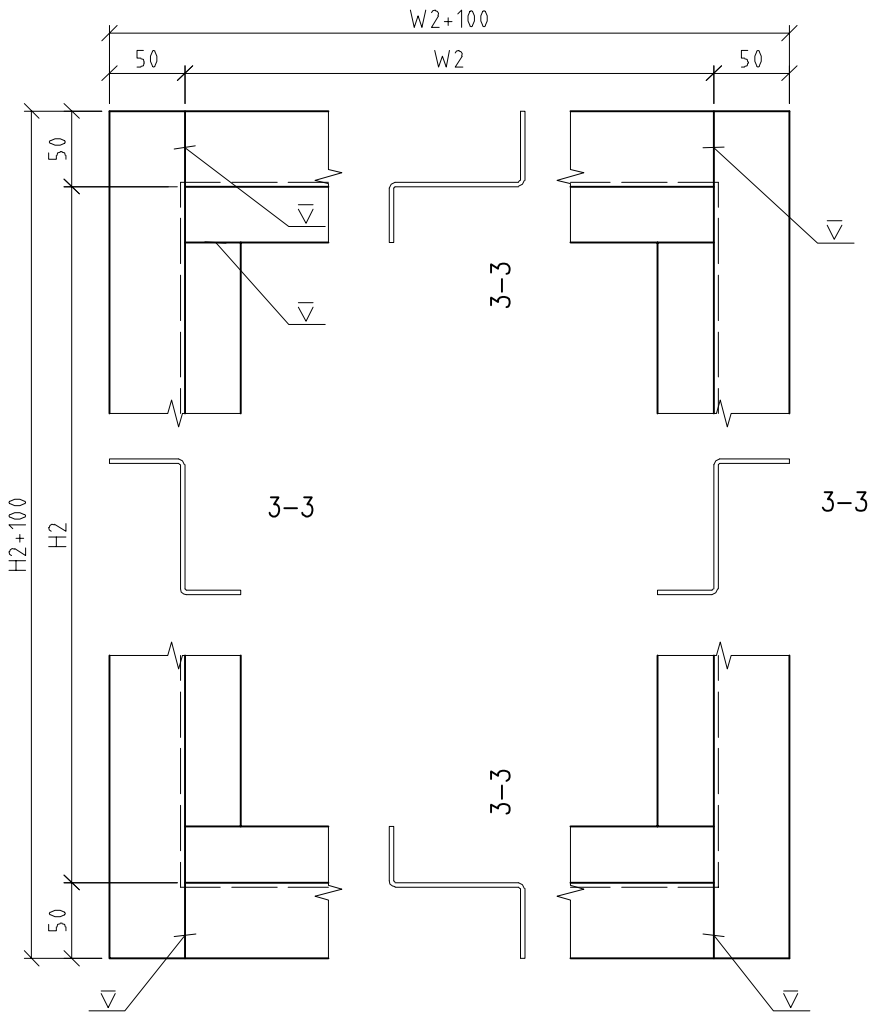
Item	Code	Description
1	N195	Support frame
2	O699	Window sill drip flashing
3	O701	Drip flashing mask - top
4	O703	Jamb flashing
5	T002	Sealing tape 3x15
6	V027	Self-tapping screw _____x_____
7	K002	Blind rivet 4x10 (12 pcs/m)
8	W001	Thermal insulation
9	O231	Window head drip flashing
10	T006	Mastic seal

Subject of detail are only positioned elements!

All details are the property of Trimo ©

INSTALLATION OF SHADES

AD5/1



NOTE:

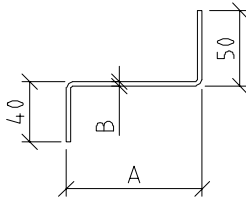
- The weld seam should be protected using a zinc-based paint.

Material: galvanised steel sheet B mm

(3-3) L = $H2+100$ =_____ PIECE _____

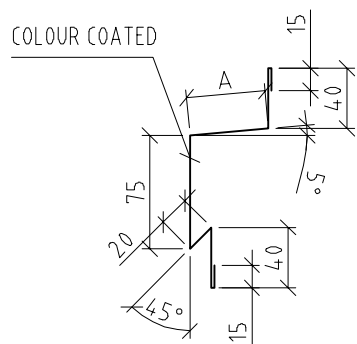
(3-3) L = $W2$ =_____ PIECE _____

3-3



Panel thickness S	50	60	80	100	120	133	150	172	200	240
A	/	30	50	70	90	103	120	142	170	210
B	/	2	2	2	2	2	3	3	3	3
Steel sheet width (3-3)	/	112	132	152	172	185	198	220	248	288

ITEM 2 | 0699 | Window sill drip flashing



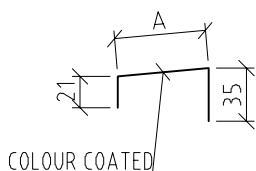
Material: galvanised steel sheet 0,6 mm

Colour _____
 L = _____ PIECE _____
 L = _____ PIECE _____

Panel thickness S	50	60	80	100	120	133	150	172	200	240
A										
Steel sheet width										

* The dimension A is adjusted to match the blinds' frame and place.

ITEM 3 | 0701 | Drip flashing mask – top



NOTE:

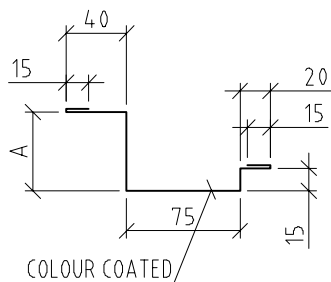
– The flashings are to be adjusted to match the thinner panels.

Material: galvanised steel sheet 0,6 mm

Colour _____
 L = _____ PIECE _____
 L = _____ PIECE _____

Panel thickness S	50	60	80	100	120	133	150	172	200	240
A										
Steel sheet width										

ITEM 4 | 0703 | Jamb flashing



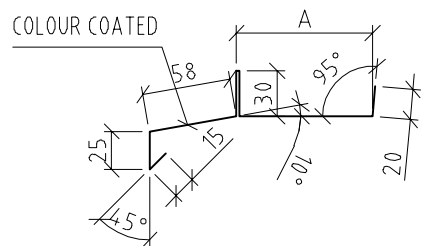
Material: galvanised steel sheet 0,6 mm

Colour _____
 L = _____ PIECE _____
 L = _____ PIECE _____

Panel thickness S	50	60	80	100	120	133	150	172	200	240
A										
Steel sheet width										

* The dimension A is adjusted to match the blinds' frame and place.

ITEM 9 | 0231 | Window head drip flashing



Material: galvanised steel sheet 0,6 mm

Colour _____
 L = _____ PIECE _____
 L = _____ PIECE _____

Panel thickness S	50	60	80	100	120	133	150	172	200	240
A	/	28	48	68	88	101	118	140	168	208
Steel sheet width	/	208	228	248	268	281	298	320	348	388



TRIMO D.O.O.

PRIJATELJEVA CESTA 12,
8210 TREBNJE, SLOVENIA

T: +386 (0)7 34 60 137

F: +386 (0)7 34 60 127

TRIMO@TRIMO-GROUP.COM

WWW.TRIMO-GROUP.COM

Trimo Group holds full copyrights on the information and details provided on this media, therefore any unauthorized reproduction and distribution is strictly prohibited. Professional care has been taken to ensure that information/details are accurate, correct and completed and not misleading, however Trimo, including its subsidiaries, does not accept responsibility or liability for errors or information, which is found to be misleading. Information/details on this media are for general purposes only. Use of it is on your own initiative and responsibility for compliance with local laws. Any deviations in details and project solutions are user responsibility. In no event, will we be liable for any loss or damage including without limitation, indirect or consequential loss or damage, or any loss or damage whatsoever arising from loss profits arising out of or in connection with, the use of this media. All information issued by Trimo Group is subject to continuous development and information/details contained on this media are current at date of issue. It is user's responsibility to obtain most up-to-date information from Trimo when information/details are used for project. The last version of the document is available on www.trimo-group.com. Latest version of published document in English language prevails over other translated language documents. For information about the delivery of panels see Trimo's General conditions (<https://trimo-group.com/en/trimo/general-conditions-of-sale>).