

TRI MO TRIMOTERM

ARCADIA. LIGHTWEAR.

FAÇADE SYSTEM **TRIMOTERM FTV INVISIO**

TABLE OF CONTENTS

1 Technical description of the Facade system with Hidden Fixing – FTV INVISIO 1

- 1.1 General 1
- 1.2 Panel profile 2
- 1.3 Panel Composition 3
- 1.4 Technical data 3
- 1.5 Coatings 3

2 Design Procedure 4

- 2.1 Panel Thickness Selection of Trimoterm FTV INVISIO 4
- 2.2 Allowed distances and Minimal Bearing Area of the Panel 4
- 2.3 The Manner of Fixing 4
 - 2.3.1 Fixing in Vertical Installations 5
 - 2.3.2 Fixing in Horizontal Installations 6
 - 2.3.3 Intermediate Fixing 7
 - 2.3.4 Edge Fixing - Vertical Installation 8
 - 2.3.5 Edge Fixing with an HF102 Aluminium Profile - Horizontal Installation 8
 - 2.3.6 Edge Fixing with a Panel Mask - Horizontal Installation 9
 - 2.3.7 Fixing Material 9
 - 2.3.8 Types of Structure or Sub structures 10

3 Typical details of facade system FTV INVISIO 11

- 3.1 Vertical Installation 11
 - 3.1.1 Connection to the base beam 11
 - 3.1.2 Extension of a façade 11
 - 3.1.3 Top End Support 12
 - 3.1.4 Top End Support with attics 12
 - 3.1.5 External corner with flashing 13
 - 3.1.6 Corner with a prefabricated corner panels 13
- 3.2 Horizontal installation 14
 - 3.2.1 Connection to the base beam 14
 - 3.2.2 Panel Extension with a Mask 14
 - 3.2.3 Edge Fixing with an HF102 Aluminium Profile 15
 - 3.2.4 Attics 17
 - 3.2.5 Corner finish with corner lining 17
 - 3.2.6 Corner finish 18
 - 3.2.7 Window and other openings 19

4 Recommendations for installation 20

- 4.1 Preparing Element Prior to Installation 20
 - 4.1.1 Removing Protective Foil 20
 - 4.1.2 Elements Cutting 20
- 4.2 Base requirements and tolerances for Trimoterm FTV INVISIO 21
- 4.3 The Installation of Intermediate Support 22
- 4.4 Lifting Methodes 23
 - 4.4.1 Vertical Installation 23
 - 4.4.2 Horizontal Installation 23

Descriptions of details, and other information in this document, are only provided to illustrate the system(s) of Trimoterm cladding products and applications. Each user of such information is fully responsible for the incorporation of this advisory information in its design.

Trimo assumes no liability whatsoever for any damages incurred by you resulting from errors in or omissions from the information included herein.

Care has been taken to ensure that information contained in the document are accurate, but Trimo, including its subsidiaries, does not accept responsibility or liability for errors in information.

1 Technical description of the facade system with hidden fixing – FTV INVISIO

1.1 General

Invisio is predominantly designed as a vertically applied, secret fix, mineral wool façade panel that can be produced in lengths, up to 14 m. Providing a minimal, clean, homogenous aesthetic, Invisio is extremely fast and economical to install, but the rewards are an appealing flat, architecturally sensitive façade.

The intermediate fixing details have a high level of load-bearing capacity and utilises the integral strength of the panel, to the fullest, without compromising the panel flatness.

The system is primarily intended for vertical orientation although, horizontal installation is also practical (Fig. 1 and 2). Trimoterm panels FTV HL (referred as FTV INVISIO) are fixed to the intermediate supports of steel or concrete frames, with steel profiles, by means of a purpose-built spreader bar, the purpose of which, is to spread the loading capacity, to a larger bearing area. The longitudinal edge of the adjacent panel covers the spreader bars and screws of the attached panel in such a manner that they are not visible on the completed façade. The fixing point is shown in cross-section in Fig. 6. The spreader bar is attached with a single or double screw according to the thickness of the sub structure and static calculation.

The Invisio system of façades delivers excellent technical characteristics, and exceptional flexibility in designing the façade. The range of use of the FTV INVISIO facades is extremely wide and is suitable for business, commercial and industrial projects.

Fig. 1: Vertical installation.



Fig. 2: Horizontal installation.



Fig. 3: Fixing in heavy steel structure.

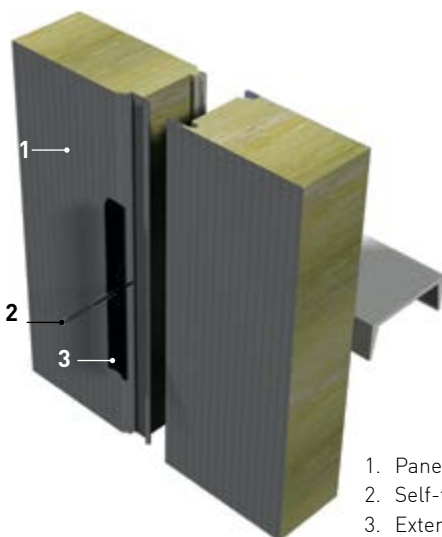
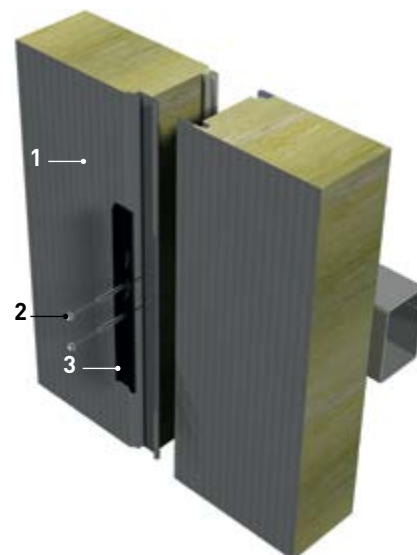


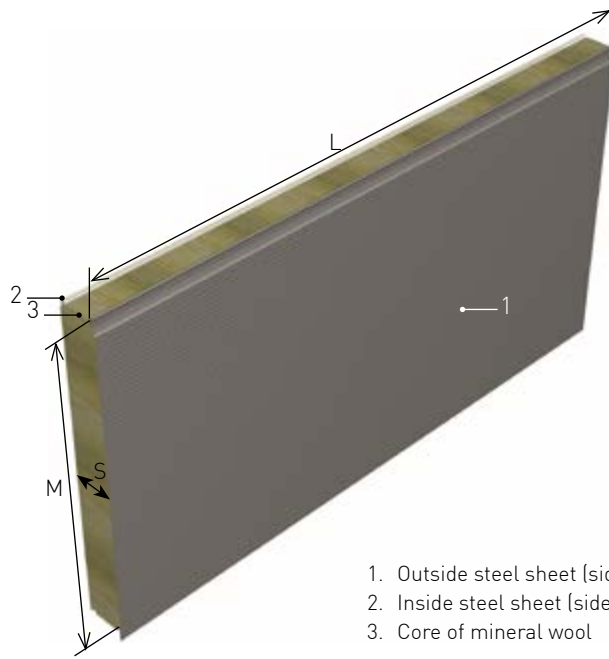
Fig. 4: Fixing in the light steel structure.



1. Panel Trimoterm FTV INVISIO
2. Self-tapping screws
3. Extension element

1.2 Panel profile

Fig. 5: Shapes of Trimoterm FTV INVISIO panels

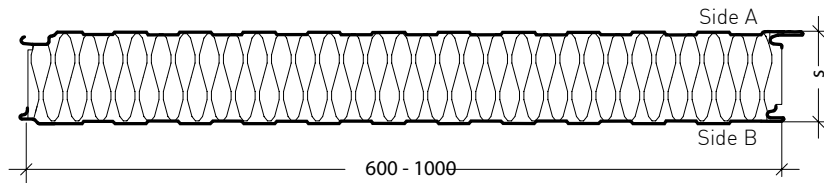


Profile Type	Side A	Side B
S - profile	•	•
V - profile (v)	•	•
V - profile (v2)	•	•
Smooth (g, G)	•	•
Micro lined (m)	•	
Micro lined (m2)		•
Micro lined (m3)	•	
Multi vario (X01)	•	

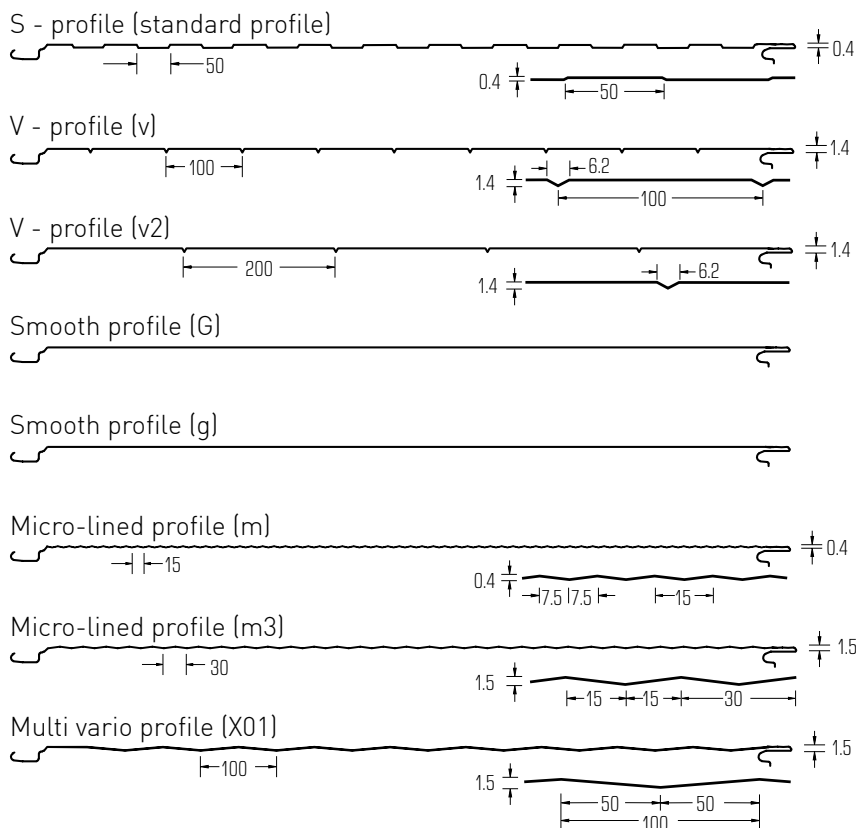
Side A is usually the external side of a panel.
Steel sheet thickness for profile v2, v6, G-gladio and Multi vario (except X01 profile) is 0.7 mm.

Note: Complete panel range can be found in brochure Trimoterm Fireproof panels - Product range.

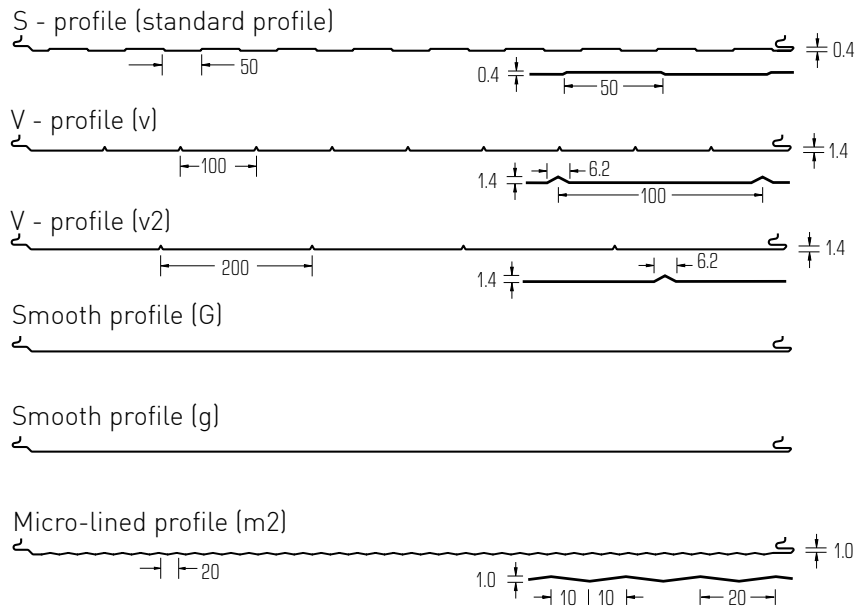
Section view of Trimoterm FTV INVISIO panel



External Profile Types:



Internal Profile Types:



1.3 Panel Composition

Trimoterm FTV INVISIO panels are composed of two shallow profiled galvanised and colour-coated steel sheets (0.6 mm or 0.7 mm thick). The sheet metal is bonded to the panel core, made of non-combustible laminated mineral wool, A1 (EN 13501-1), which ensures excellent thermal and sound insulation of panels as well as the requisite, specified fire resistance. All three layers are bonded to form a composite structure (in a thickness of 50 to 240 mm) that provides load-bearing capability, air/water tightness and various construction applications.

A protective foil is glued to the surface of the panels, as protection during handling, transport and mounting. After the installation is completed, the foil is removed. The maximum panel length is 14 m.

1.4 Technical data

Table 1: Technical data for Trimoterm FTV INVISIO

Technical data FTV INVISIO		FTVHL 50	FTV HL 60	FTV HL 80	FTV HL 100	FTV HL 120	FTV HL 133	FTV HL 150	FTV HL 172	FTV HL 200	FTV HL 240
Panel thickness [mm]		50	60	80	100	120	133	150	172	200	240
Weight [kg/m ²]	Fe 0,6/Fe 0,6	16.5	17.7	20.1	22.5	24.9	26.5	28.5	31.2	34.5	39.3
Panel width [mm]		1000									
Panel length [m]		up to 14									

Complete Technical data is available in Technical Specification data sheet.

1.5 Coatings

Trimo panels consist of a mineral wool core and an internal and external covering made of galvanized, pre-painted, thin guage, steel sheet metal. The steel is hot galvanised (usually 275 g/m²) in compliance with EN 10346 and additionally protected by an organic coating in accordance with the coil-coating process (DIN EN 10169/1).

The following basic types of organic coating protection are applied to steel sheet metal:

- based on SP polyester
- based on PVDF polyvinylidene fluoride
- based on PUR polyurethane
- based on PVC polyvinyl chloride, coating or film

Individual types of organic protection with the basic characteristics are presented in Table 2.

Table 2: Basic characteristics of an individual type of organic coating or protection.

TYPE OF CORROSION PROTECTION	SP	SP	PVDF	PVDF+	PUR	PVC(P)	PVC+F
Corrosion classification [DIN 55928-8]	II	III	III	III	III	III	III
Total organic thickness (my) [EN 13523-1]	15	25	25	35	50	max. 175	max. 175
Temperture resistance (°C)	+70	+80	+110	+110	+110	+70	+70
UV resistance category [EN 13523-10]	—	Ruv3	Ruv4	Ruv4	Ruv4	Ruv2	—
Flexibility	••	••	•••	••••	••••	••••	••••
Staining resistance	••	•••	••••	••••	••••	••	••••

Note: •••• suitable without reservations ••• very suitable •• suitable • suitable with reservations/contact Trimo - unsuitable

Note: A detailed explanation of the coating, together with Instructions for the use and maintenance can be found in the Technical instructions for the use and maintenance of Trimo products.

2 Design Procedure

2.1 Panel Thickness Selection of Trimoterm FTV INVISIO

Based on the designer's requirements the Trimoterm FTV INVISIO panel, fixing and required sub-construction for fixing, is determined in accordance with the local building regulations/standards.

The basic information required for designing is:

1. Information on the facility (location, type of the facility, purpose of the facility, desired appearance of the facility, thermal insulation, etc.).

2. Panel information:

- Panel thickness
- Type of sheet metal and panel (sheet metal thickness and colour)
- Modular width
- Panel length

3. The type of detailing is determined on the basis of the available structural data:

- **The load on the panel and sub-structure.**
- **Sub-structure and type of fixing:**
 - Allowed distances or the range of the panel
 - Minimum bearing area of the panel
 - Fixing

2.2 Advised spans and Minimal Bearing Area of the Panel

The panels require static data for the load-bearing capacity, in accordance with EN 14509:2006 or local regulations. The conversion must also be performed for a concrete installation and load requirements. To assist the selection and design of the façade, a table of allowed distances spans has been produced and minimal bearing areas for construction. The advised spans are listed in the annex of the instructions and are intended for information only. The detailed span between supports needs to be calculated individually for each facility. The conversion is available on Trimo d.d. web site.

The main factors for determining the fixing are:

1. Wind load:

- Basic wind load
- Height of the façade above the terrain
- Position on the façade (edge areas)

2. Temperature load:

- Panel colour (group I, II or III)

3. Static system of panel laying:

- Single-span, double-span, multi-field

4. Panel orientation:

- Horizontal installation
- Vertical installation

Considering the listed factors, the façade can be subjected to various loads. The allowed spans of the sub-structure and the fixing manner must be adjusted to the loads.

2.3 Fixing

Fixing of the FTV INVISION panel is a combination of edge and intermediate fixing. The intermediate fixing is the same for horizontal and vertical installation. Edge fixing depends on the type of installation and comes in various forms.

2.3.1 Fixing in Vertical Installations

Fig. 6: Vertical installation with edge fixing.

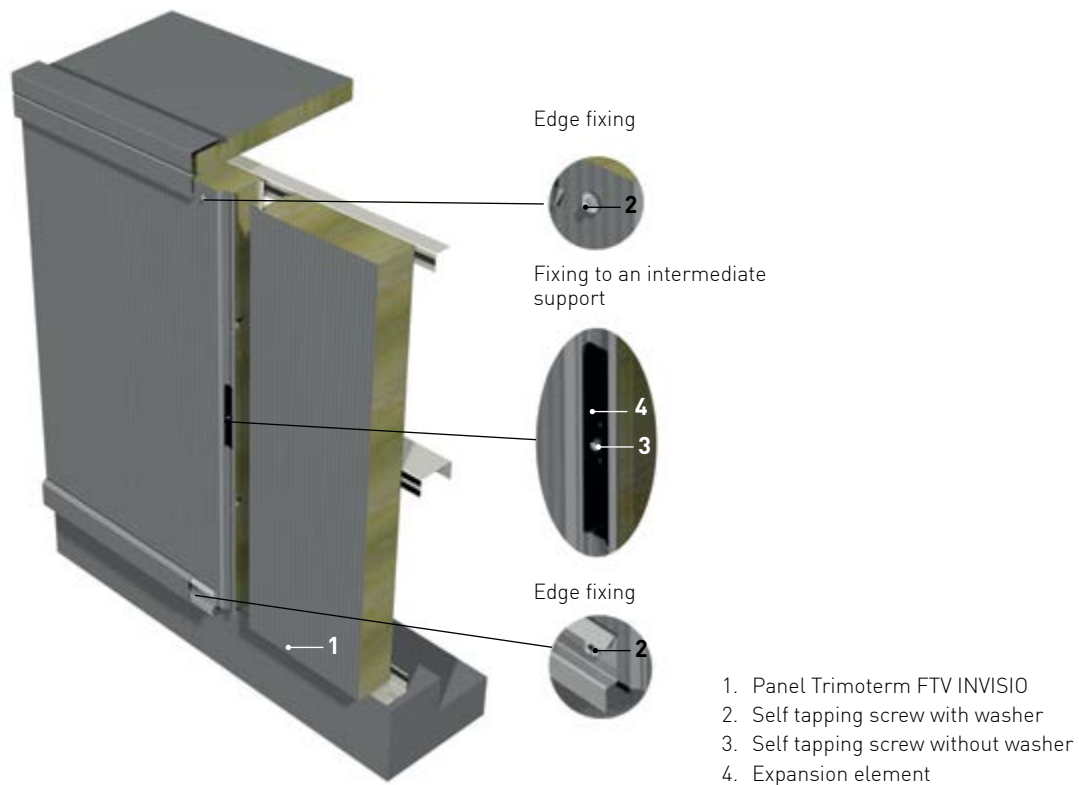
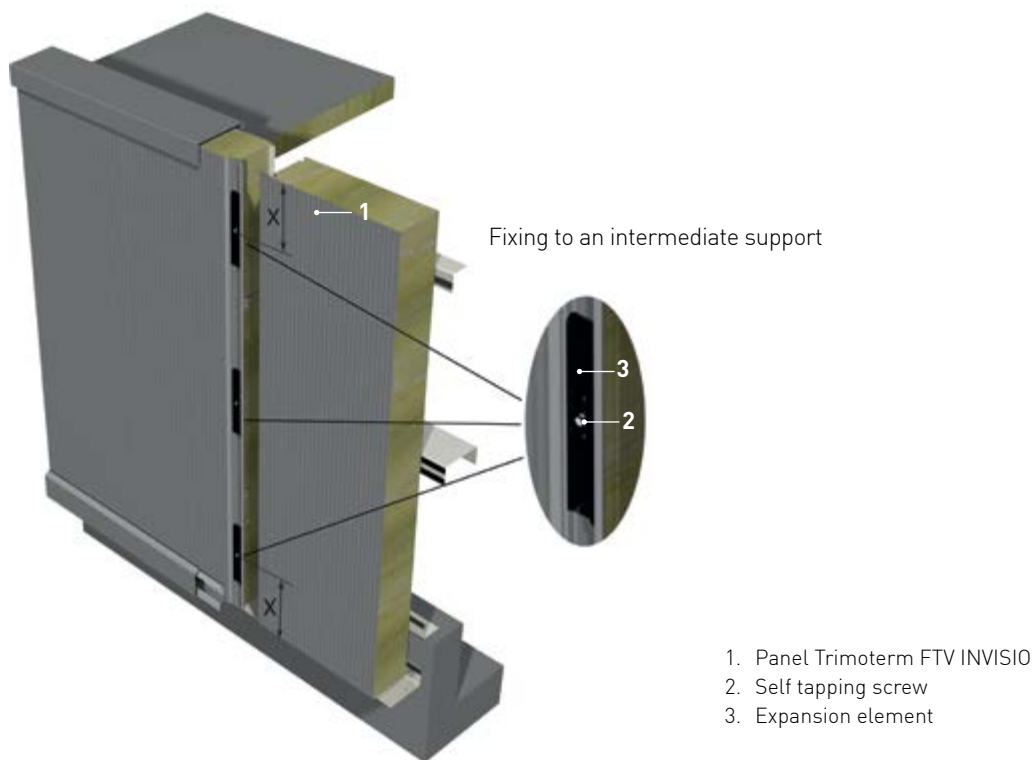


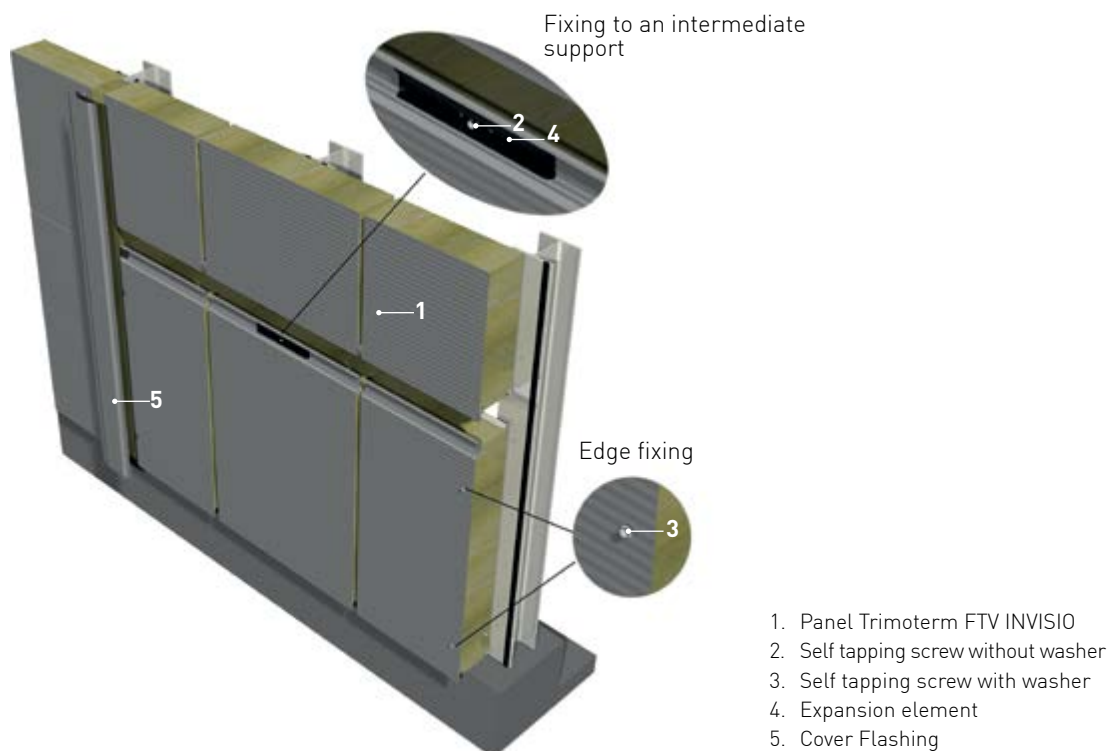
Fig. 7: Vertical installation without edge fixing.



2.3.2 Fixing in Horizontal Installations

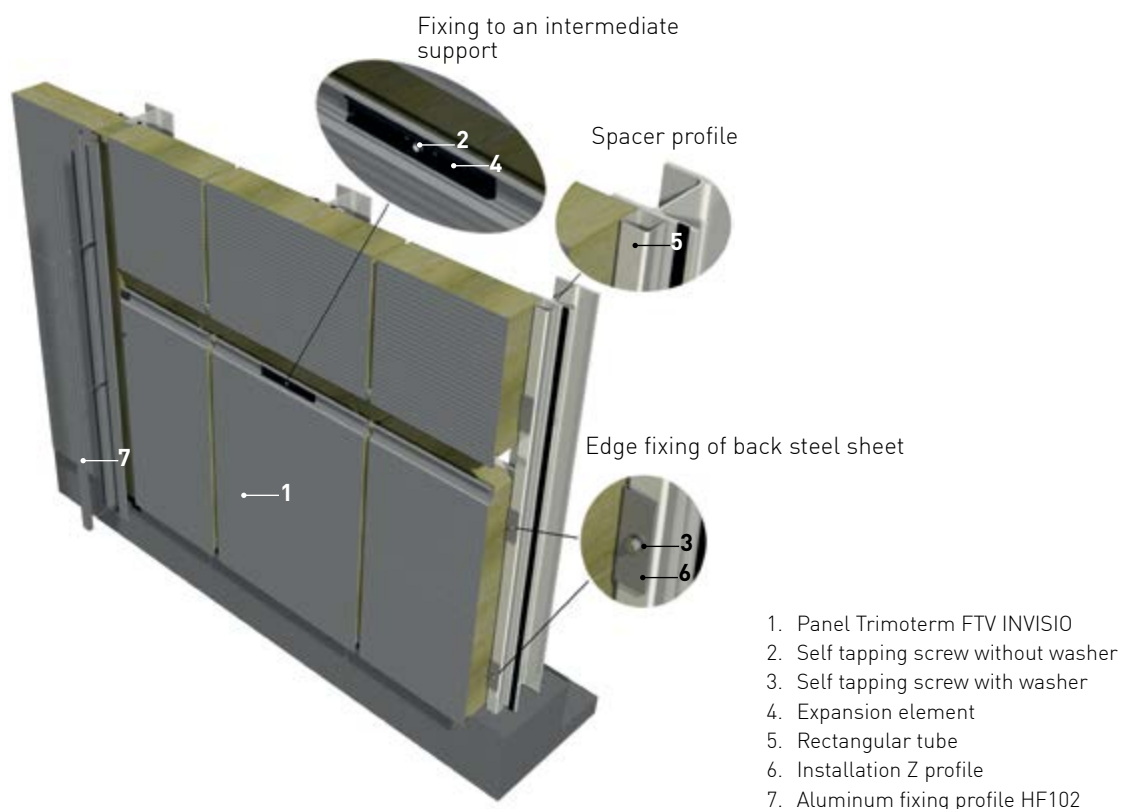
Two basic types of fixing or transversal extension of the façade for horizontal installation are used: horizontal installation with a cover flashing (Fig. 8) and horizontal installation with fixing by means of Aluminium profile with the HF102 label (Fig. 9). In the case of façade extension with a cover flashing, the edge panel is attached with two screws on each side. Edge screws transfer the weight of the panel and wind load.

Fig. 8: Horizontal installation cover flashing.



The façade extension is performed with a HF102 fixing profile, which has a function of an edge fixing but only for wind load. In order to transfer the load of the panel's weight, the back sheet metal, of the panel, must also be screwed to prevent settlement of the entire façade. The fixing of the internal sheet metal is performed in various ways described in Chapter 4.3.

Fig. 9: Horizontal installation with HF102 fixing profile.



2.3.3 Intermediate Fixing

Intermediate fixing is a combination of screw and expansion detail (Fig. 10, 11) and a sub-structure. The line gasket takes over one load direction through the screw and the sub structure takes over the other load direction. Intermediate fixing is fully functional when both panels are in contact (Fig. 10). Non-corroding screws without a washer should be used for fixing.

Fig. 10: Fixing to an intermediate support detail.

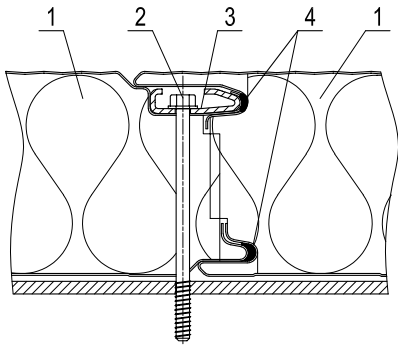
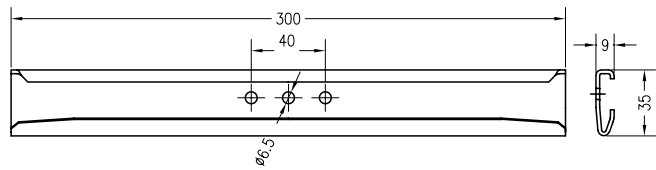


Fig. 11: Expansion element detail.



1. Panel Trimoterm FTV INVISIO
2. Self tapping screw without washer
3. Expansion element
4. Line gasket

In general the minimum required bearing area on the intermediate support for an appropriate positioning on a sub - structure is 60 mm or is determined by static conversion (Fig. 12). In the case of fixing for a thick wall sub construction the line gasket is attached with two screws. In this case the minimal required surface of the sub structure is 80 mm or is determined by static conversion (Fig. 13). Number of screws is also determined by Static Calculation. It is dependent on the load and the thickness of the sub - structure.

Fig. 12: Single screw fixing.

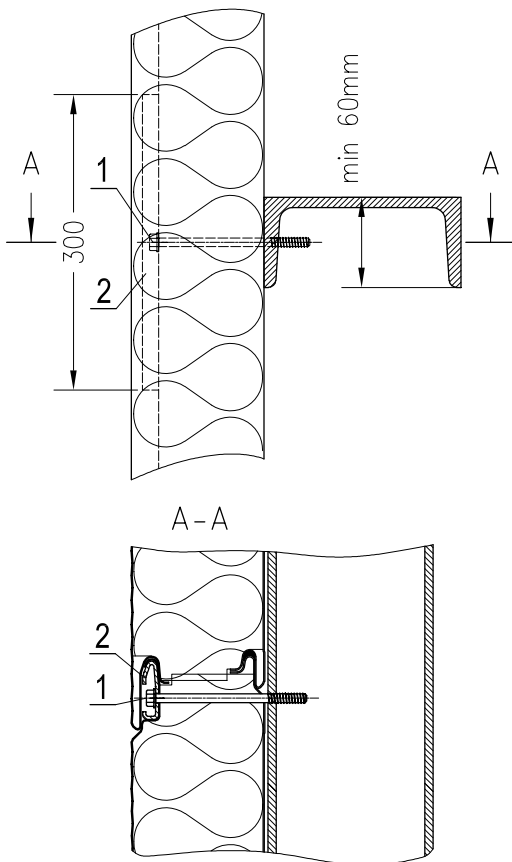
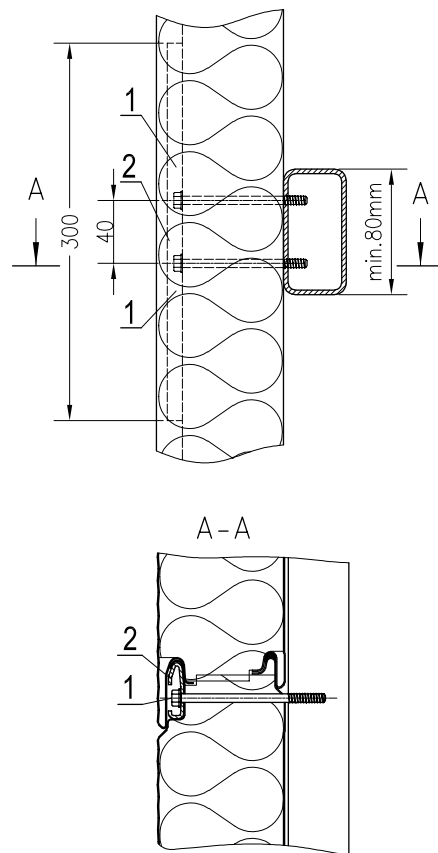


Fig. 13: Two screws fixing.

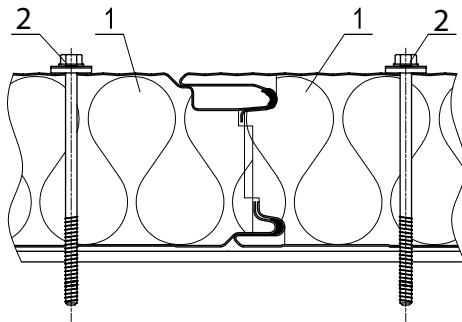


1. Self tapping screw without washer
2. Expansion element

2.3.4 Edge Fixing - Vertical Installation

In the case of fixing through the panel (edge support) stainless steel screws (Fig. 14) with a stainless steel washer (19 mm in diameter) and an EPDM gasket should be used exclusively. The fixing should be performed at least 25 mm from the edge of the panel.

Fig. 14: Edge fixing trough a panel



1. Panel Trimoterm FTV INVISIO
2. Self tapping screw with washer

2.3.5 Edge Fixing with an HF102 Aluminium Profile - Horizontal Installation

Edge fixing in a horizontal installation with a purpose-built HF102 profile is performed by means of fixing of the profile to the steel construction. The profile is screwed directly into the flange if it is not thicker than 12 mm (Fig. 15) and is within the prescribed tolerance or through a spacing profile welded to the construction (Fig. 16, 17). Screw lengths according to panel thickness are listed in Table 3.

Fig. 15: Edge fixing with HF102 profile directly into steel construction.

Fig. 16: Edge fixing with HF102 profile indirectly into tube 40 x 40 x 2

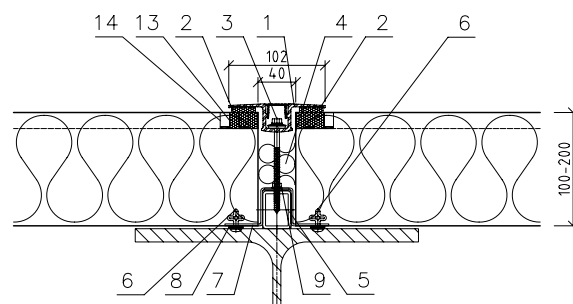
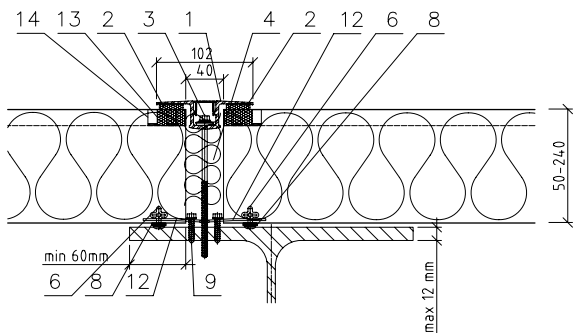
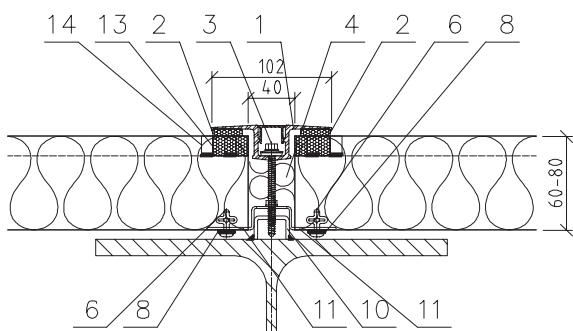
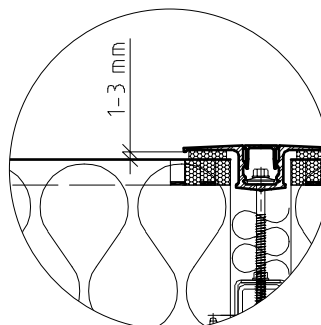


Fig. 17: Edge fixing with HF102 profile indirectly into tube 40x40x2



- | | |
|----------------------------|------------------------------|
| 1. Aluminium profile HF102 | 8. Sealing tape 3x15 |
| 2. Gasket EPDM 6x30 | 9. Self-tapping screws |
| 3. Self-tapping screw | 10. U profile 20x40x20x3 |
| 4. Thermal insulation | 11. Z profile 40x18x40x120x2 |
| 5. Tube 40x40x2 | 12. Installation sheet metal |
| 6. Bulb tite rivet | 13. PE gasket |
| 7. Z profile 40x38x40x2 | 14. Sealing tape |

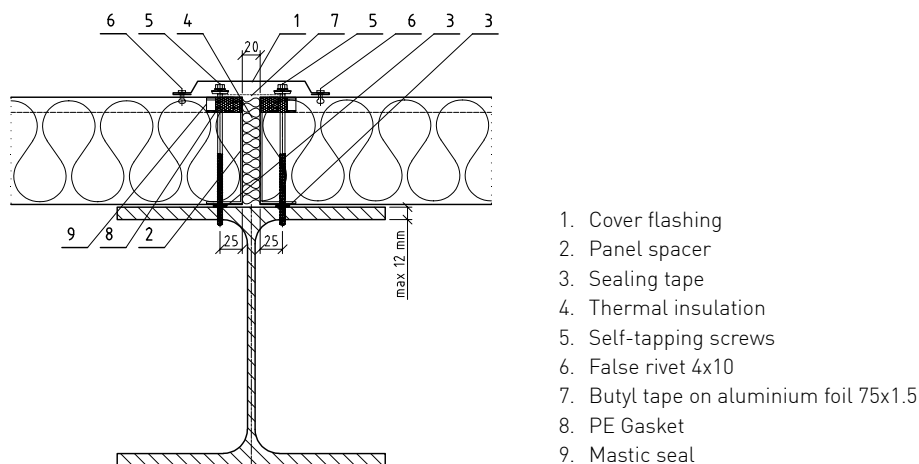


NOTE:
Distance between HF profile and Trimoterm panel needs to be 1-3mm.

2.3.6 Edge Fixing with a Panel COVER FLASHING - Horizontal Installation

Edge fixing with a panel extension for horizontal installations is performed through the entire panel (Fig. 18). Screw lengths according to panel thickness are listed in Table 3.

Fig. 18: Detail of edge fixing with panel cover flashing.



2.3.7 Fixing Material

The screw length depends on the panel thickness, type of detail and type of sub - construction in accordance with the instructions of the screw producer (Table 3). Special attention is needed when tightening the screws in order to ensure that they are not under- or over-tightened.

Table 3: Screw lengths for attaching Trimoterm FTV panels..

Thickness FTV INVISIO (mm)	Type of screw used for various of attachment (Type A and B)			
	Attachment in the hidden joint ¹⁾	Attachment through the panel ²⁾	Attachment through profile HF102 ³⁾	Attachment through profile HF102 ⁴⁾
50	6.3/6.5 x 64	80	6.3/6.5x64	6.3/6.5 x 25
60	6.3/6.5 x 64	6.3/6.5 x 80	6.3/6.5 x 64	6.3/6.5 x 32
80	6.3/6.5 x 80	6.3/6.5 x 100	6.3/6.5 x 80/90	6.3/6.5 x 50/45
100	6.3/6.5 x 100	6.3/6.5 x 125	6.3/6.5 x 100	6.3/6.5 x 64
120	6.3/6.5 x 125	6.3/6.5 x 150	6.3/6.5 x 125	6.3/6.5 x 90
133	175	175	135/150	100
150	6.3/6.5 x 175	6.3/6.5 x 175	6.3/6.5 x 150	6.3/6.5 x 115
172	200	200	175	135/150
200	6.3/6.5 x 230	6.3/6.5 x 230	6.3/6.5 x 200	6.3/6.5 x 175
240	6.3/6.5 x 270/290	6.3/6.5 x 270/290	6.3/6.5 x 270/260	6.3/6.5 x 230

Note:

¹⁾ This is true for secondary attachment in the hidden joint.

²⁾ This is true for attachment through the whole panel thickness

³⁾ This is true for attachment of panels using the HF102 aluminium profile without the additional square pipe 40x40x22

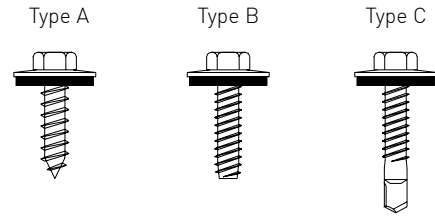
⁴⁾ This is true for attachment of panels using the HF102 aluminium profile with the additional square pipe 40x40x2

Screws of types A and B are used for fixing to a steel substructure; a hole of a suitable diameter is to be drilled through a panel and substructure in accordance with the instructions of the screw producer. Table 4 presents examples of required hole sizes by the producer SFS Stadler. Preliminary drilling of bore holes is not allowed for screws of type C.

Table 4: Drilling diameter for the screw depending on the substructure.

Substructure thickness [mm]	Drilling diameter [mm]
2.0 - 3.0 (Tip A)	5.00
3.0 - 3.9	5.05
4.0 - 4.9	5.35
5.0 - 5.9	5.65
6.0 - 10.0	5.80
> 10.0	5.85

Fig. 19: Fixing screw types.



2.3.8 Types of Structure or Sub-structures

The classic steel sub-structure is suitable for fixing FTV INVISIO façade elements within the permissible tolerances. If the sub-structure is not within the permissible tolerances an aligning sub-structure must be used.

The fixing method is selected according to the type of structure. FTV INVISIO façade panels are fixed:

1. Directly onto steel structures (if the structure is within permissible tolerances).
2. If the sub-structure is not within the permissible tolerances an aligned sub-structure must be used.

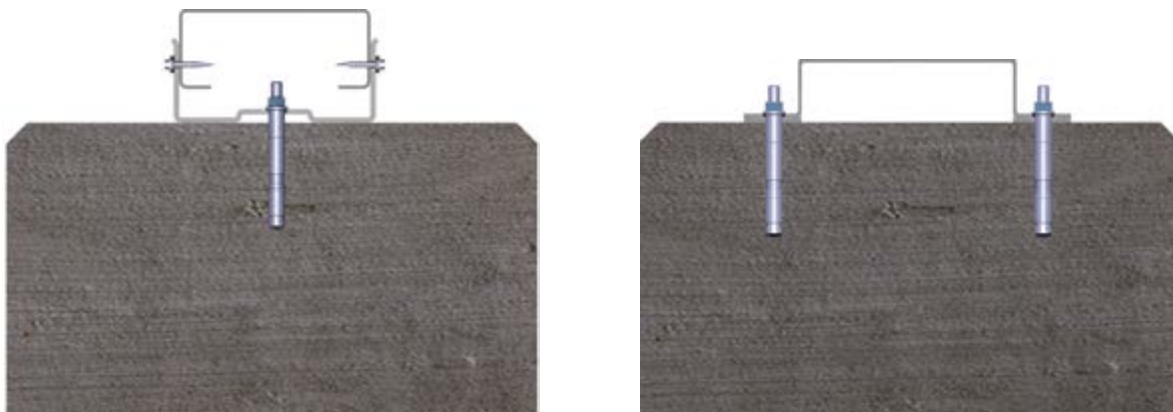
Two methods of fixing are used for concrete structures:

1. Using levelling sub-structures.
2. Using a wide levelling profile.

Fig. 21: Steel structure and steel structure with levelling sub-structure.



Fig. 22: Concrete structure with two types of levelling structure



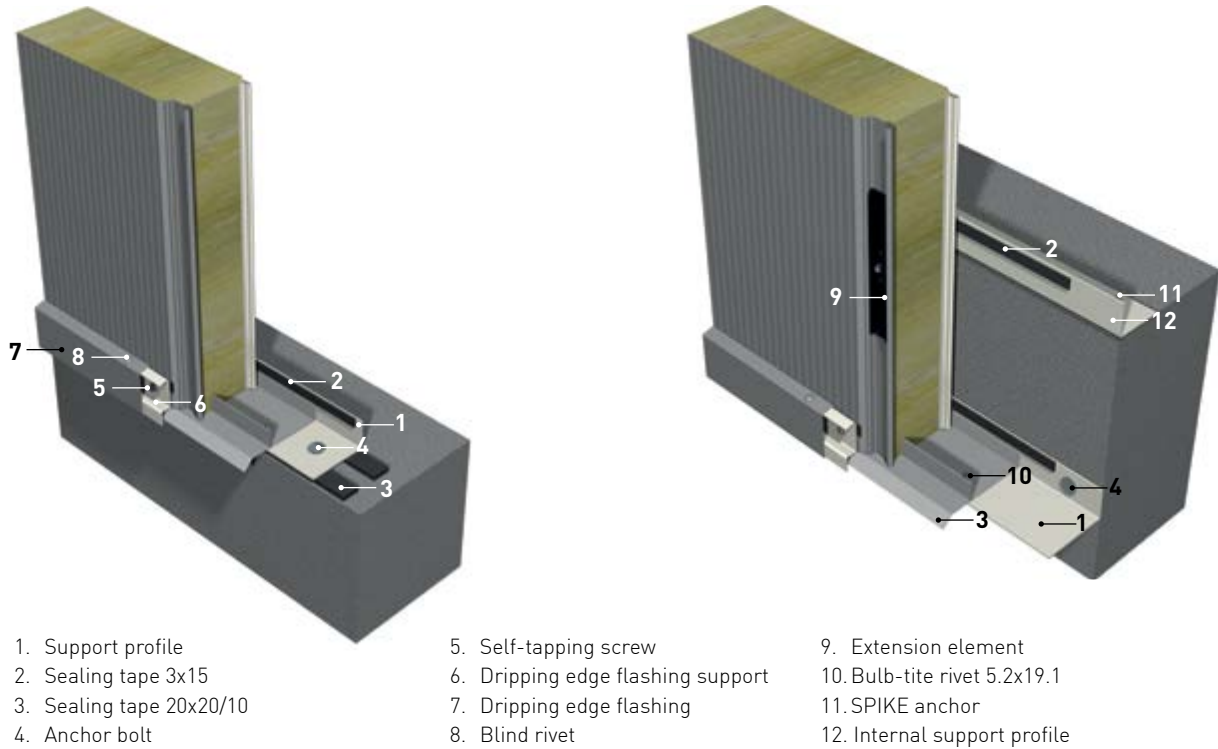
3 Typical details of facade system INVISIO

The typical finishing details and detail elements that are used for fixing, sealing, thermal insulation and changing visual appearance are presented below. The details are specific for vertical and horizontal installation. Basic details are presented. A detailed description of the implementation of details is provided in the instructions for installation and drawings of details.

3.1 Vertical Installation

3.1.1 Connection to the base beam

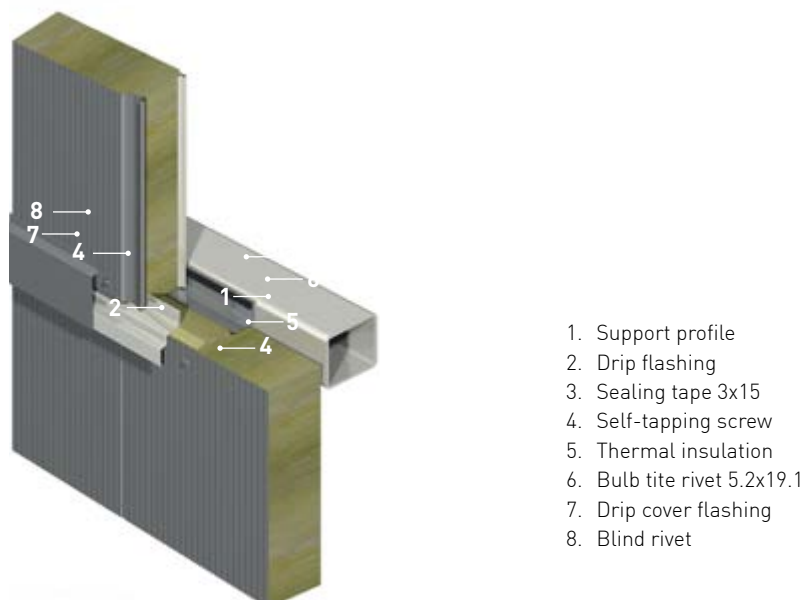
Fig. 23: Detail of a connection to the base beam



3.1.2 Extension of a façade

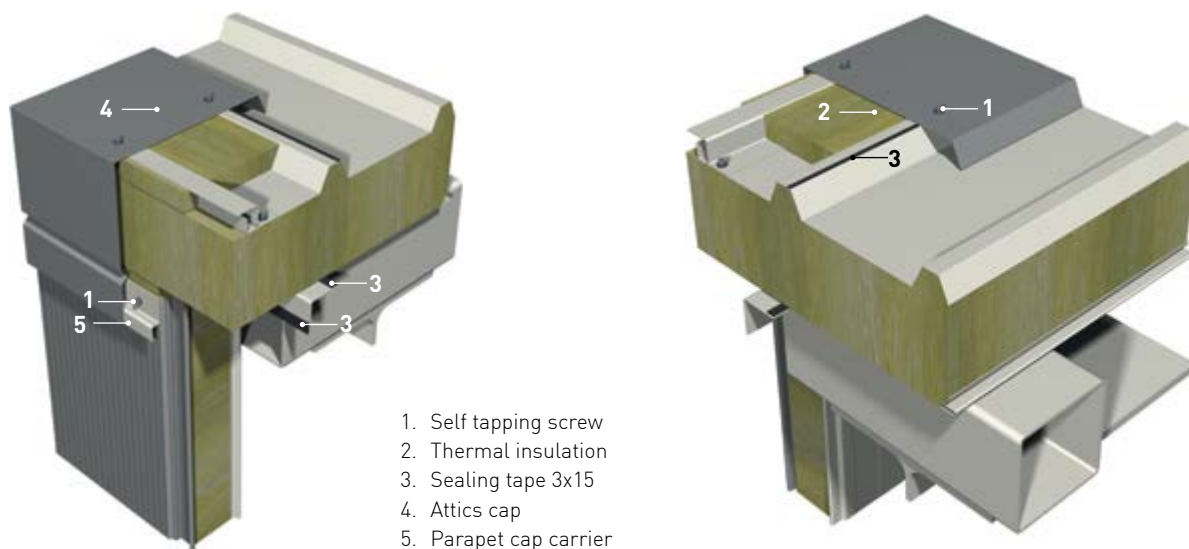
The vertical extension detail is used in cases when the height of the façade exceeds the maximum panel length which is limited to 14 m. In this case an intermediate fixing to the sub - construction is performed in which a minimum bearing area must be ensured and a finishing cover flashing provided that ensures tightness of the break.

Fig. 24: Detail of façade extension.



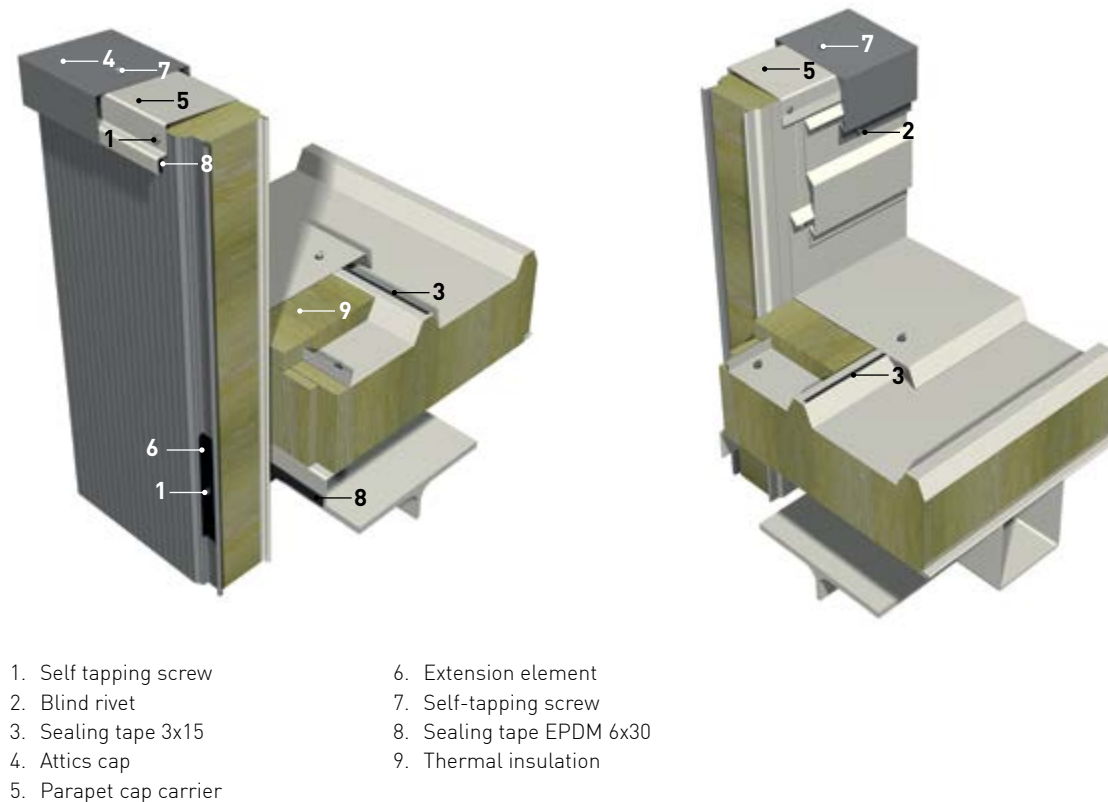
3.1.3 Top End Support

Figure 25: Detail of fixing to the top end support.



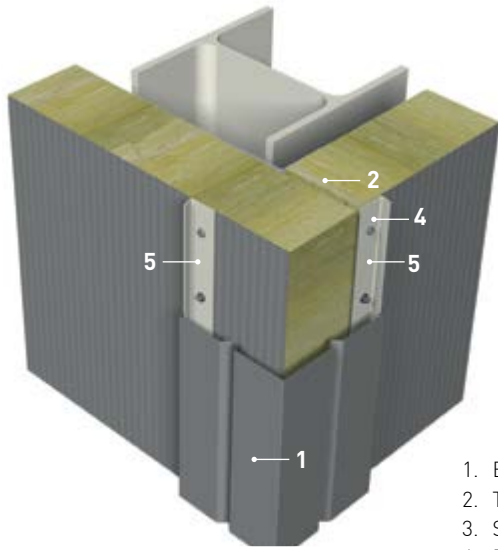
3.1.4 Top End Support with attics

Figure 26: Detail of fixing to the top end support with attics.



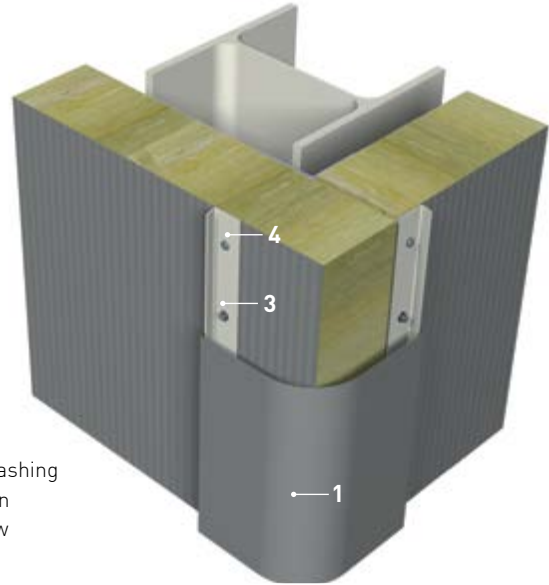
3.1.5 External corner with flashing

Fig. 27: Corner finishing with sharp edge flashing.



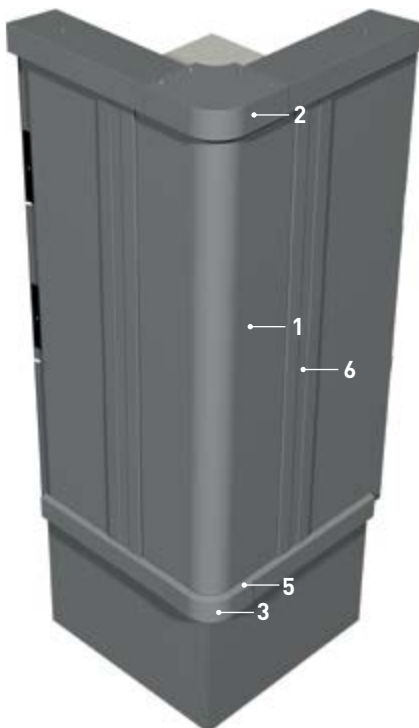
1. External corner flashing
2. Thermal insulation
3. Self-tapping screw
4. Blind rivet
5. Corner beam

Fig. 28: Corner finishing with rounded flashing.



3.1.6 Corner with a prefabricated corner panels

Fig. 29: Vertical rounded corner panel.



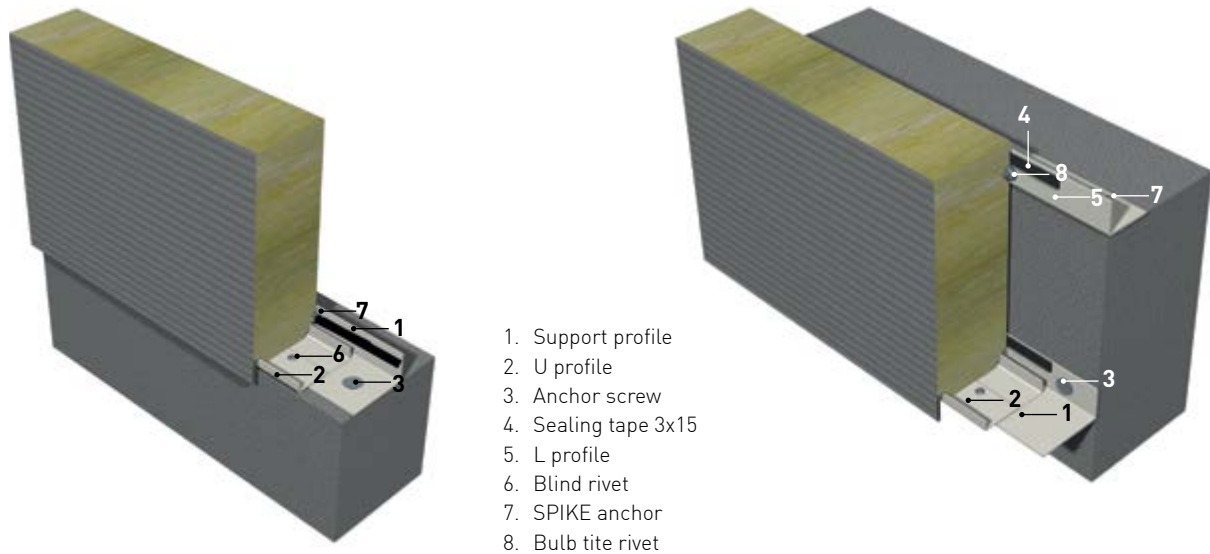
1. Vertical rounded corner
2. Attic cap of rounded corner
3. Parapet of a rounded corner
4. Self-tapping screw
5. Blind rivet
6. HF102 aluminium profile



3.2 Horizontal installation

3.2.1 Connection to the base beam

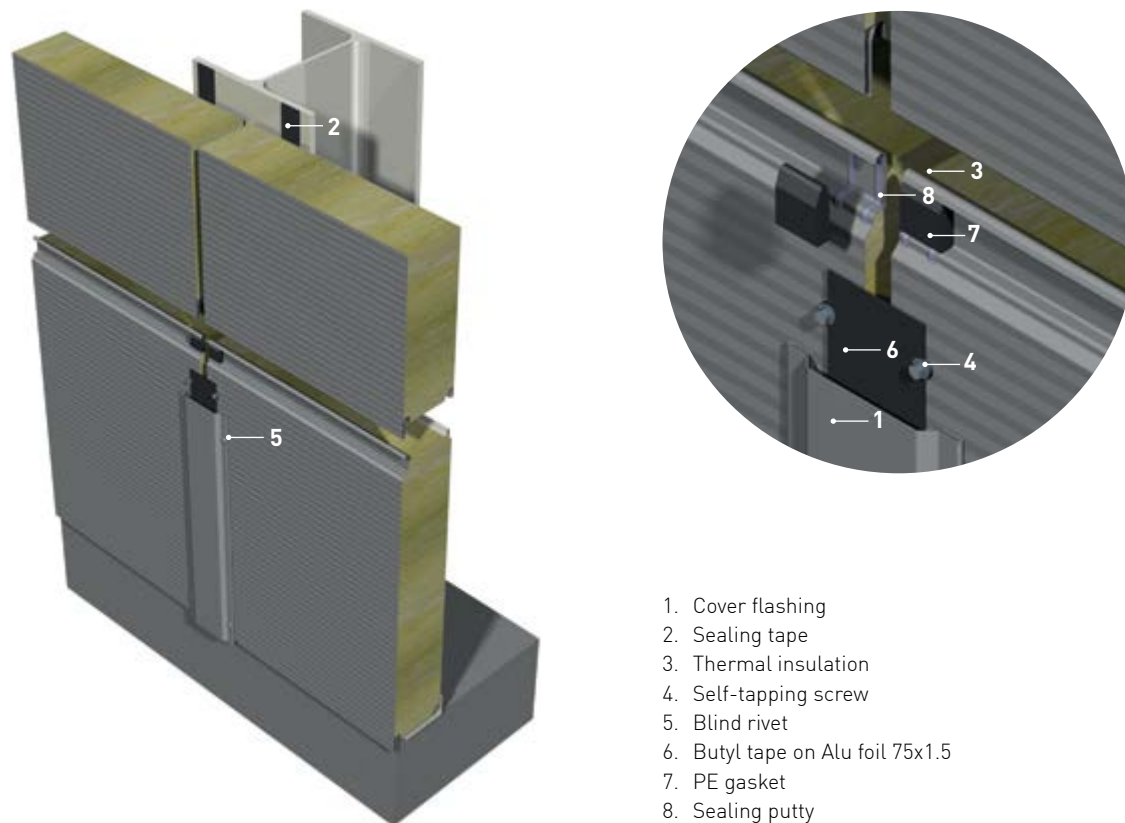
Fig. 30: Detail of attachment to the base beam.



3.2.2 Panel Extension with a cover flashing

Classic extension is performed by fixing through the panels at both edges with at least two screws or in accordance with the static conversion. The joints are sealed with sealing tape and a cover flashing which is fixed to the exterior sheet metal of the panel (Fig. 31). The channel of the exterior joint is sealed with sealing putty and PE gasket.

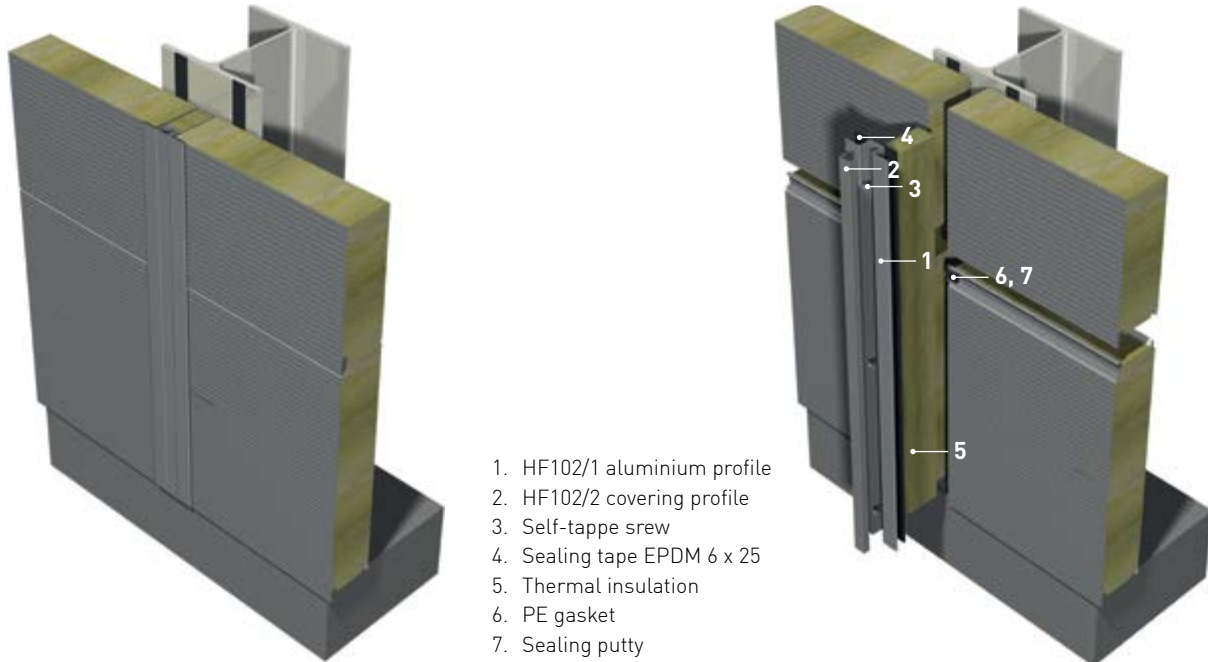
Fig. 31: Detail of horizontal facade installation with panel mask at edge support.



3.2.3 Edge Fixing with an HF102 Aluminium Profile

For fixing the horizontal façade a purpose-built extruded HF102 aluminium profile is used which is composed of a load-bearing section (HF102/1) and a cover (HF102/2). The loads are transferred from the panel through the gaskets (pos. 4 in Fig. 32) to the profile which is fixed to the load-bearing construction of the facility by means of self-tapping screws (Fig. 32). In order to transfer the weight of the panel the back sheet metal of the panel must be additionally fixed. The additional fixing can be performed in various methods according to the sub - construction and thickness of the panel (Fig. 16, 17, 18, 31). The channel of the exterior joint is sealed with sealing putty and a PE gasket.

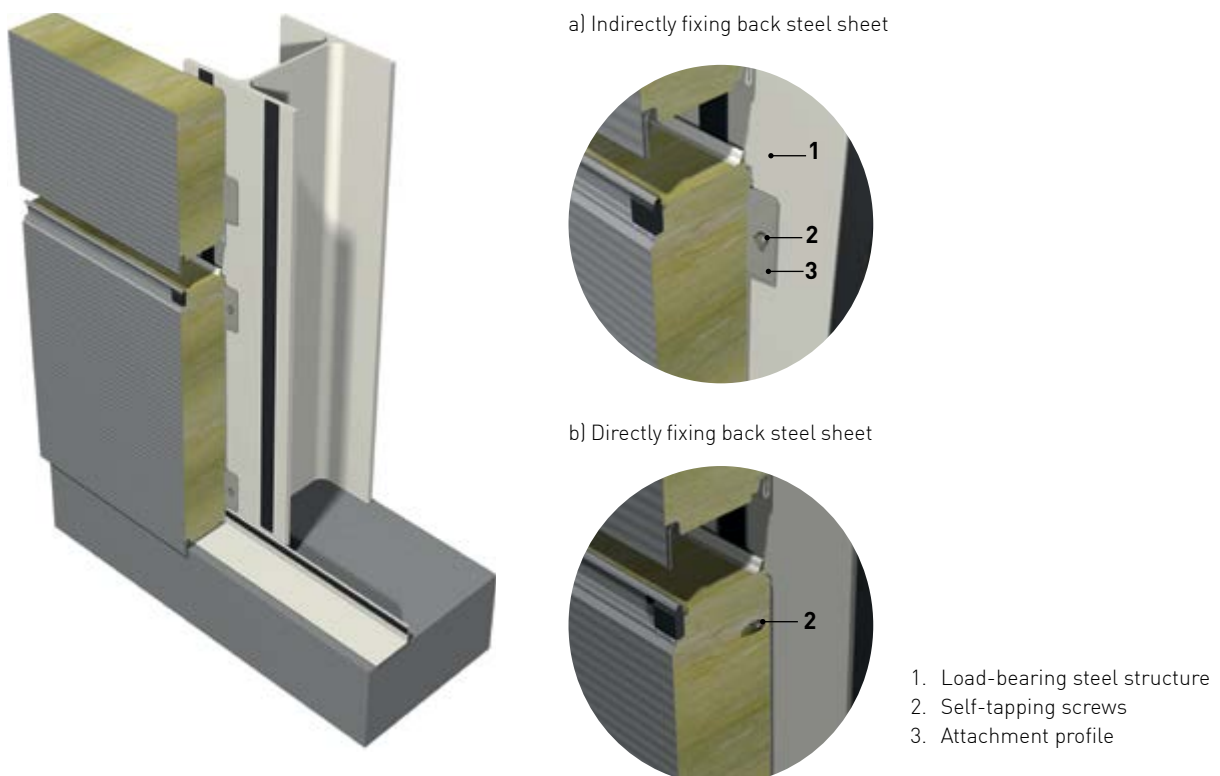
Fig. 32: Edge fixing with HF102 profile.



Installation or temporary fixing of the panel can be performed using the following methods:

1. directly into the construction wall thickness up to 12 mm or
2. on the spacer profile. For direct fixing into the construction the back sheet metal can be fixed indirectly through a fixing sheet metal that is riveted to the back sheet metal of the panel (Fig. 33a) or the sheet metal is screwed on directly (Fig. 33b).

Fig. 33: Temporary fixing directly into the construction.



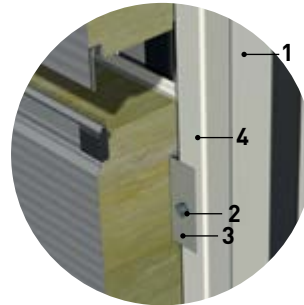
In the case of Installation fixing in thick constructions a spacer profile with the dimensions of 40x40x2 or 40x20x2 (depending on the thickness of the panel appropriate for fixing) is welded to the basic construction (Fig. 34). In this case, the back sheet metal is fixed directly through the Z-profile (Fig. 35) which is riveted to the interior sheet metal of the panel.

The shape of the Z-profile depends on the thickness of the panel or spacer profile (Fig. 35).

Fig. 34: Indirectly fixing back steel sheet into spacer



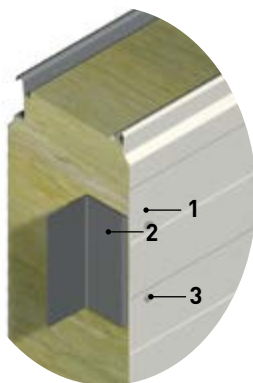
Indirectly fixing back steel sheet into spacer



1. Load-bearing steel structure
2. Self-tapping screws
3. Attachment profile
4. Welded tube 40x40

Fig. 35: Installation attachment.

a) FTV HL 100 - FTV HL 240 / Z profile 40/40/40/2



1. Panel Trimoterm FTV INVISIO
2. Z profile 40/40/40/2
3. Blind rivet

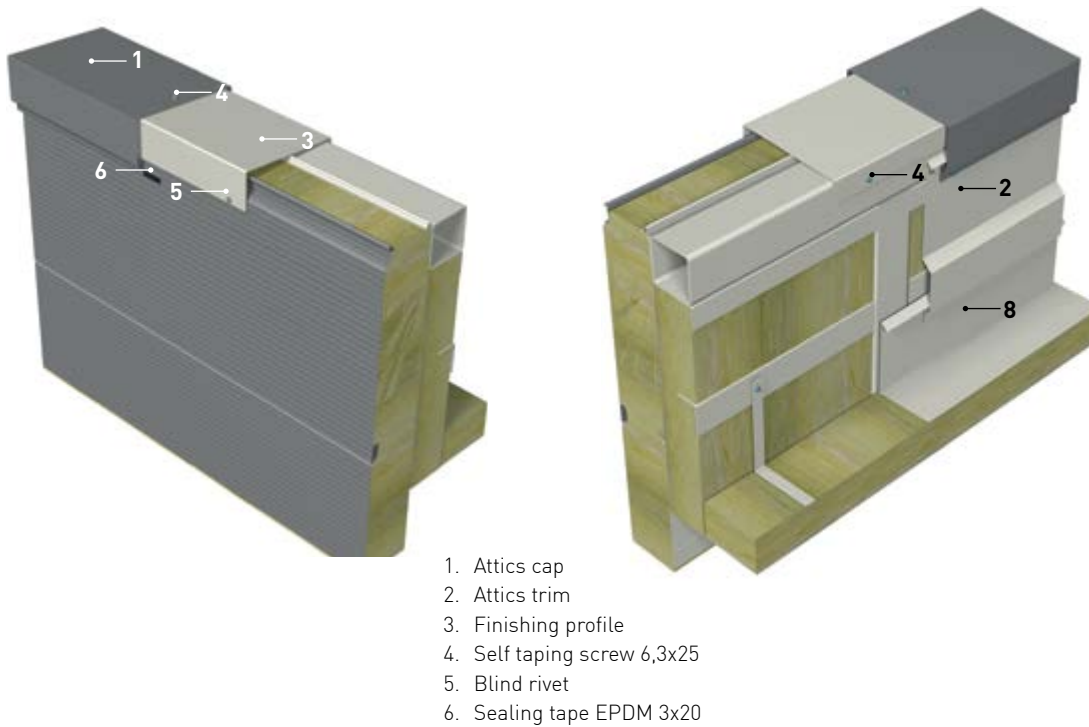
b) FTV HL 60 - FTV HL 80 / Z profile 40/30/40/2

c) fastening without spacers profile (b < 12 mm)

3.2.4 Parapets

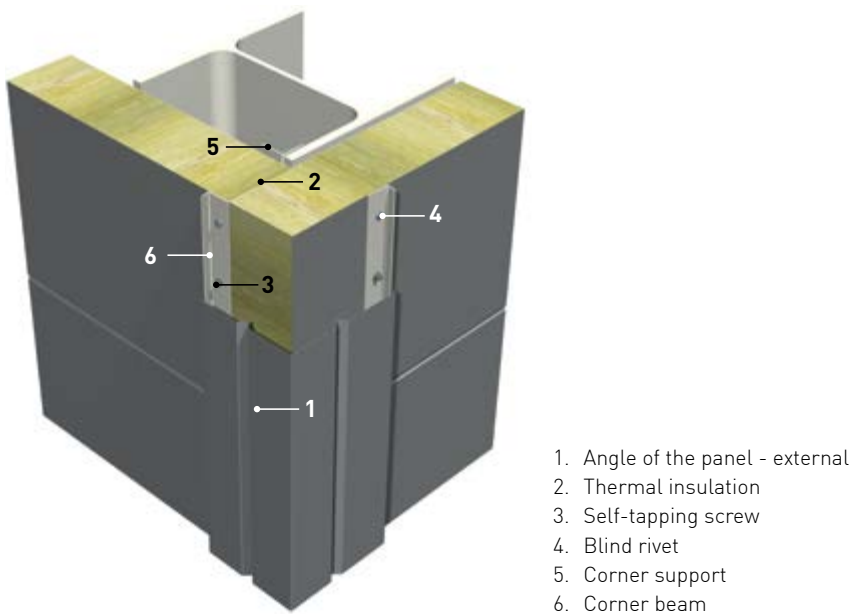
Parapets used with horizontally laid panels need to have additional attachments on the middle support. (Fig. 36). The closure is carried out by a combination of final borders that offer a more aesthetically pleasing finish on the completed facade.

Fig. 36: Detail attics.



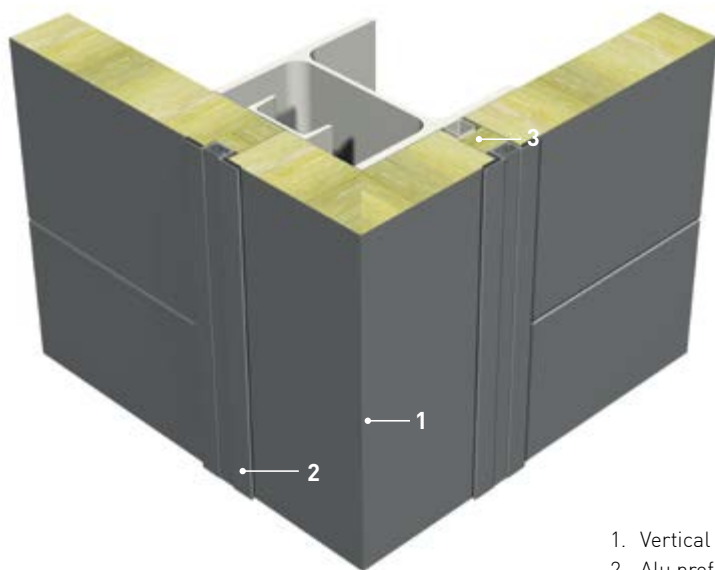
3.2.5 Corner finish with corner lining

Fig. 37: Detail of corner finish with corner lining.



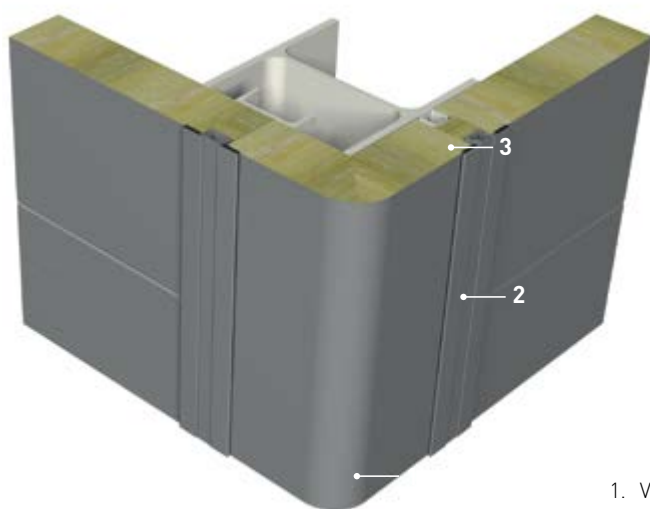
3.2.6 Corner finish

Fig. 38: Detail of a sharp edge corner.



1. Vertical corner
2. Alu profile HF102
3. Thermal insulation

Fig. 39: Detail of a round edge corner.

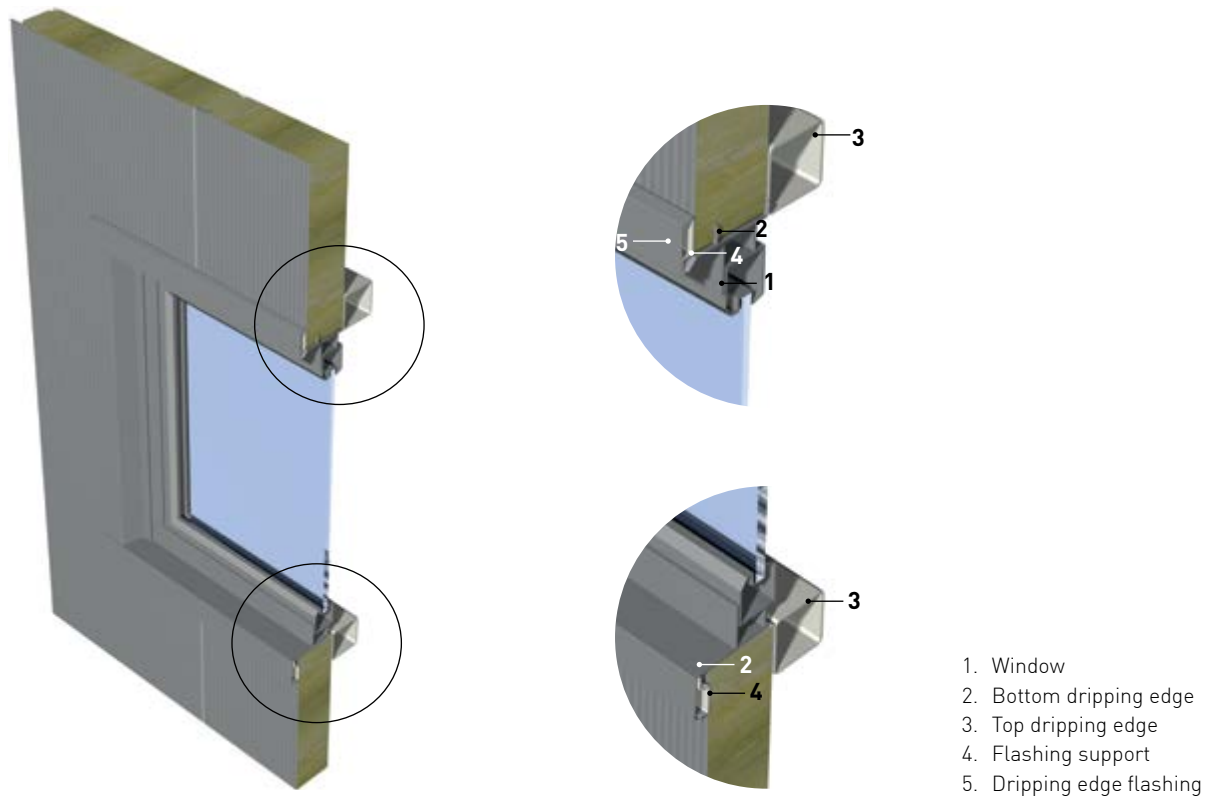


1. Vertical corner
2. Alu profile HF102
3. Thermal insulation

3.2.7 Window and other openings

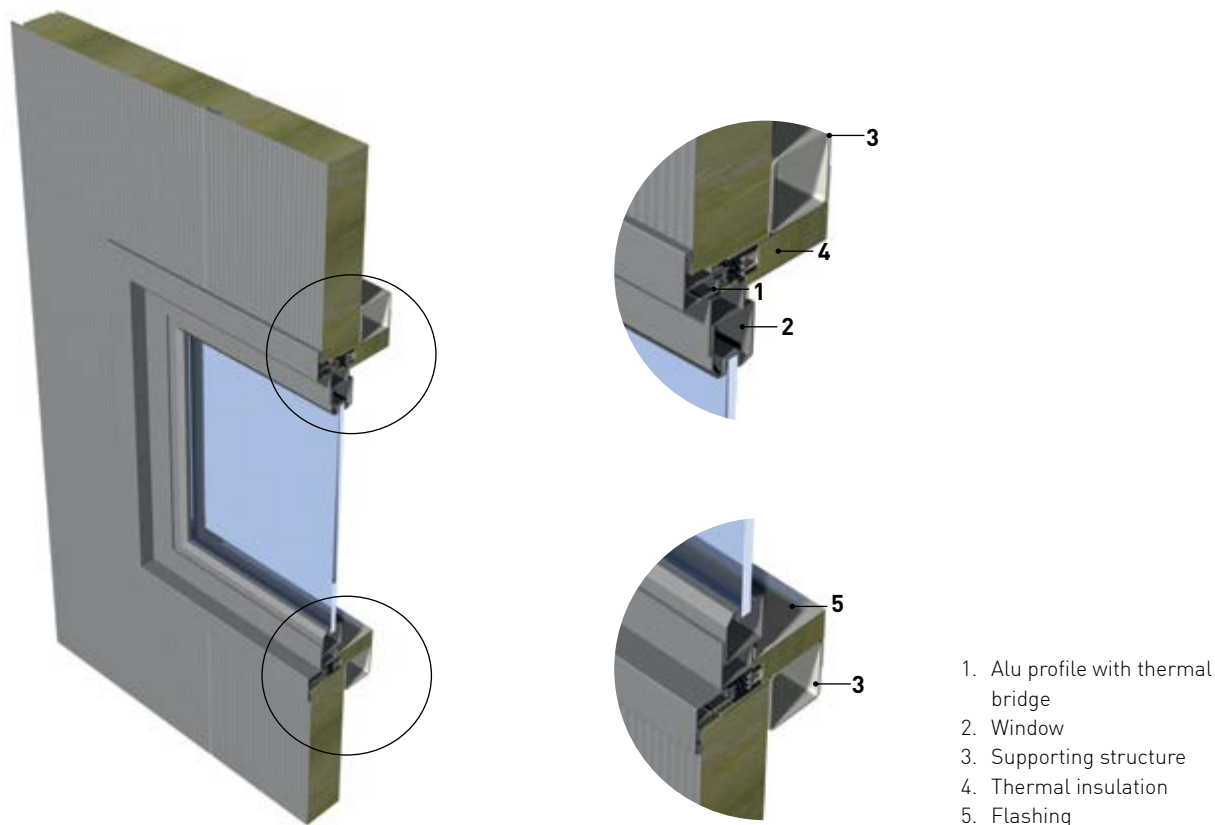
The openings for installation of windows, doors and penetrations to the INVISIO façade system are finished with a classic cover flashing (Fig. 40) or with a prefabricated aluminium profile with integrated thermal bridge separation (Fig. 41).

Fig. 40: Performance of window dripping edges and flashing.



1. Window
2. Bottom dripping edge
3. Top dripping edge
4. Flashing support
5. Dripping edge flashing

Fig. 41: Installation of window in to Aluminium profile frame.



1. Alu profile with thermal bridge
2. Window
3. Supporting structure
4. Thermal insulation
5. Flashing

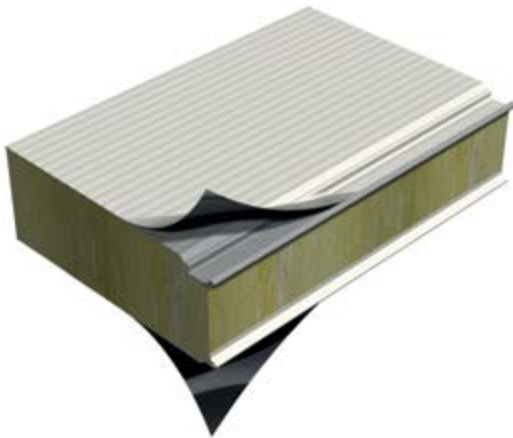
4 Recommendations for installation

4.1 Preparing Panels Prior to Installation

4.1.1 Removing Protective Foil

A protective foil for the protection of colour coated surfaces against any possible damage caused during transport, handling and assembly is applied to Trimoterm FTV panels on both sides. The foil is to be removed from the internal side before the assembly of an individual panel. The foil on the external side is removed directly before the completion of works; it should be removed during the assembly on places where it is necessary, (e.g. in a longitudinal joint of two panels, under screws, flashing ...) (Fig. 42). If panels are to be stored for a long period of time the foil should be removed after three months. If panels are to be stored in the open air they should be protected against the sun otherwise the removal of the foil may be difficult.

Fig 42: Removal of the protective foil



NOTE:

- If façade panels are stored for a long period of time the foil should be removed within three months at the latest.
- If the façade panels are to be stored in the open they should be protected against the sun; otherwise the complete removal of foil is no longer possible.
- During assembly the foil must be removed from all joints of the façade panel.

4.1.2 Elements Cutting

When cutting panels during assembly only scissors and saws that do not heat the cutting edge to a high temperature should be used (Fig. 43). High temperatures can destroy the anticorrosive protection in the immediate surrounding of a cut. Therefore, the use of any grinding machines is prohibited for such purposes! All small metal particles that appear as a result of cutting and drilling should be immediately removed from the surface of panels, but certainly when the daily work has been completed.

Marking and scratching with nails or similar sharp objects can damage the protective coating.

Fig. 43: Elements cutting is allowed sheet metal shears and saws

Recommended use:



Restricted use:

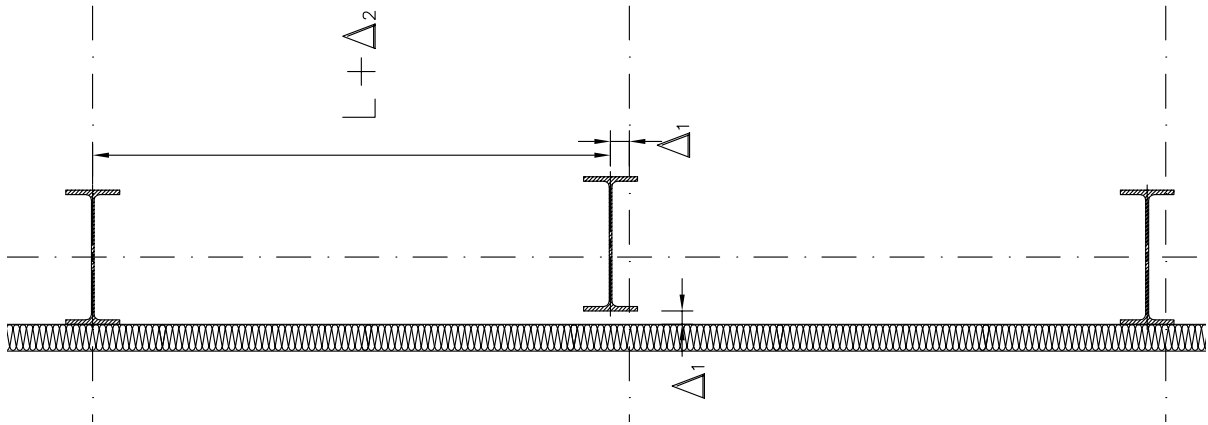


4.2 Base requirements and tolerances for Trimoterm FTV INVISIO

The base onto which the panel can be attached is a concrete wall, skeletal concrete structure, steel structure or brick wall. Trimoterm FTV INVISIO panels can be attached directly to steel if substructure accuracy is sufficient and the substructure is less than 12 mm thick.

Before installation, check the measurements of the sub-structure to which panels Trimoterm FTV INVISIO are attached. The structure must be within a +/- mm tolerance of the two extreme edges of the panel by length (Fig. 44). The steel structure to which the panels are attached must adhere to ENV 1090-1 or internal Trimo requirements. This means that the construction can deviate from ideal project lines by no more than +/- 1 mm and +/- 5 mm as absolute maximum when $L > 5m$.

Fig. 44: Structure tolerances based on distances between two fields.

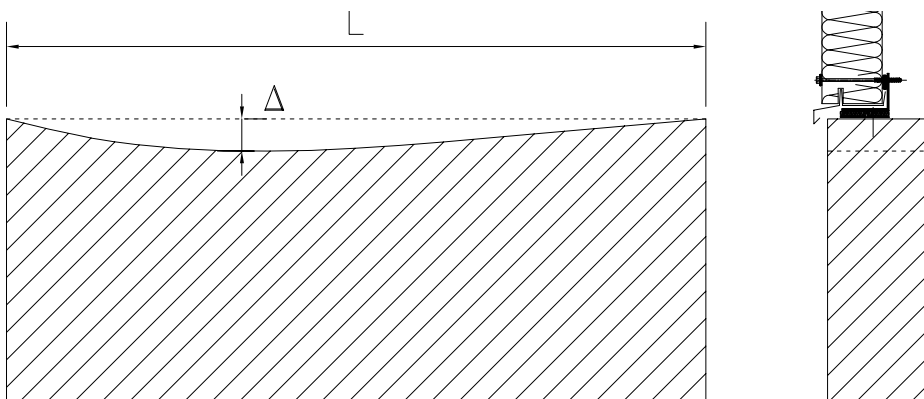


The most important aspect when designing and beginning installation, is in addition to the above mentioned variation of the base beam.

The base beam must be aligned and can vary by a maximum of 5 mm at a distance of a single multi-field panel (Fig. 45).

Otherwise, the panel will not be horizontal, which will cause deformation of the bottom joint. The load bearing profile of the base beam must be levelled, using a spirit level.

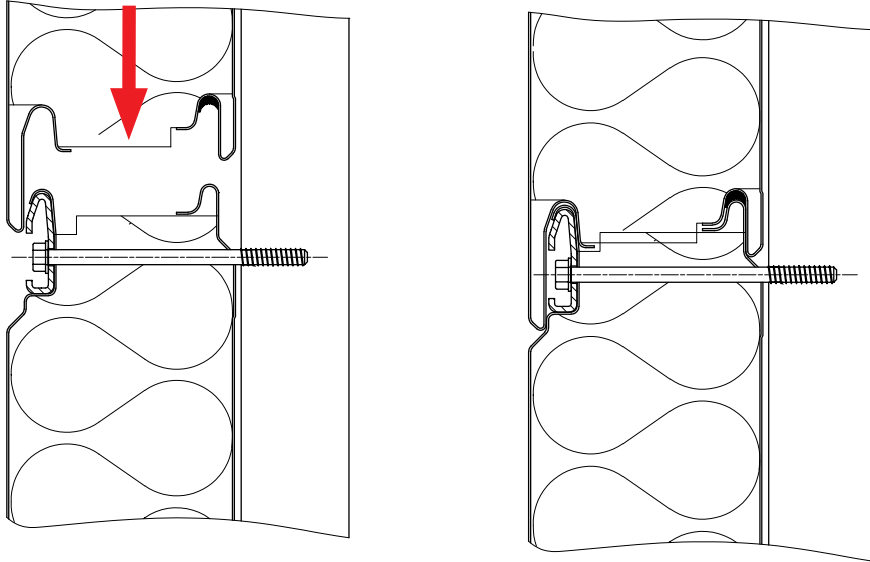
Fig. 45: Tolerances of the concrete base beam.



4.3 The Installation of Intermediate Support

Intermediate fixing is a specific feature of the Trimoterm FTV INVISIO panel. Intermediate fixing enables the installation of extremely long panels which would not bear the load in the case of classic installation with edge fixing only, causing the panel to collapse. Fixing of the FTV INVISIO panel is always a combination of edge fixing (the same as with the regular panel) and intermediate fixing which additionally holds the panel. The proper manner of fixing is shown in the figure below (Fig. 46).

Fig. 46: The proper manner of fixing.



Intermediate fixing requires special attention as the fitting should not be over-tightened, which causes a pre-deformation of the exterior visible surface and impairment of the exterior appearance of the facade (Fig. 52) or disables the assembly. A minimum inlet of air at the intermediate supports is recommended (Fig. 47).

Figure 47: Recommended fixing of intermediate support.

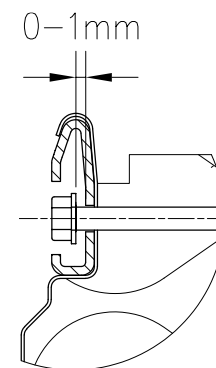
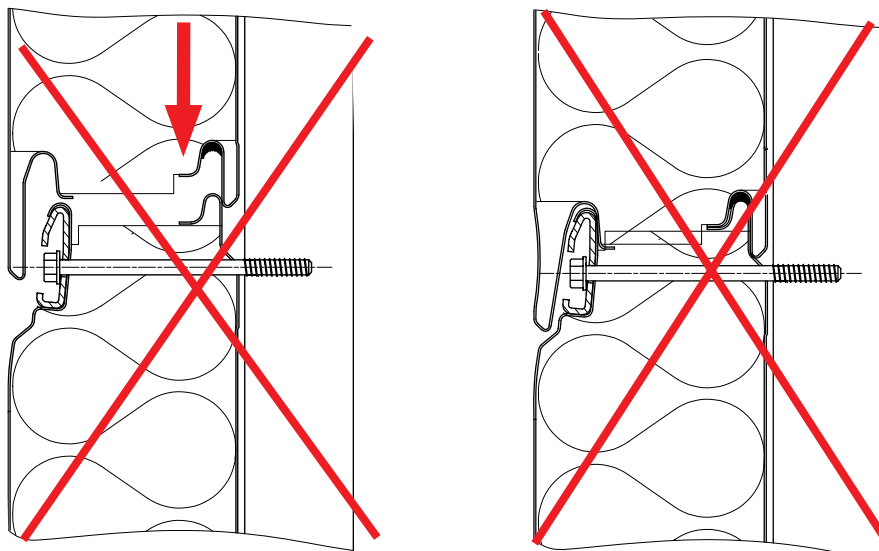


Fig. 48: Inconret manner of fixing.

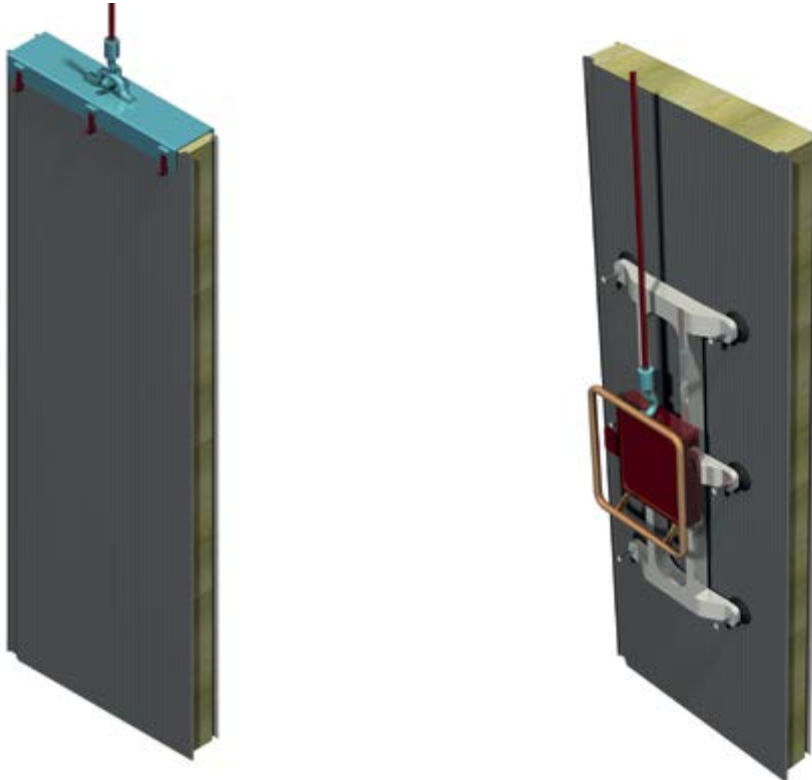


4.4 Lifting Methodes

The installation begins in the edge axis of the individual façade. Prior to the commencement of the installation of panels it is necessary to check the geometric correctness of the sub – structure which is a prerequisite for a quality execution. Any possible geometric irregularities must be corrected by a suitable cutting of initial and end panels. The panels are leant against the base frame which partially bears the vertical loads. For lifting and positioning the panel to the installation spots in the event of vertical or horizontal façade the use of vacuum grips is recommended (Fig. 49). Prior to lifting the protective foil must be removed from the spots where the panel is sucked by the vacuum grip. A special gripper is also designed for vertical or horizontal installation (Fig. 50). The dimensions of the grip and pins must be determined statically according to the thickness and weight of the panels.

4.4.1 Vertical Installation

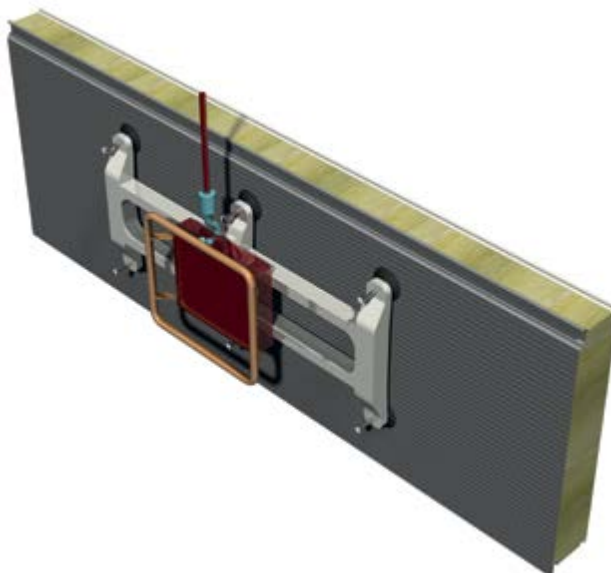
Fig. 49: Vertical lifting with mechanical gripper; Vertical lifting with vacuum gripper.



4.4.2 Horizontal Installation

For horizontal lifting of panel FTV INVISIO only vacuum gripper can be used (Fig. 50).

Fig. 50: Horizontal lifting with vacuum gripper.





TRIMO D.O.O.

PRIJATELJEVA CESTA 12,
8210 TREBNJE, SLOVENIA

T: +386 (0)7 34 60 137

F: +386 (0)7 34 60 127

TRIMO@TRIMO-GROUP.COM

WWW.TRIMO-GROUP.COM

Trimo Group holds full copyrights on the information and details provided on this media, therefore any unauthorized reproduction and distribution is strictly prohibited. Professional care has been taken to ensure that information/details are accurate, correct and completed and not misleading, however Trimo, including its subsidiaries, does not accept responsibility or liability for errors or information, which is found to be misleading. Information/details on this media are for general purposes only. Use of it is on your own initiative and responsibility for compliance with local laws. Any deviations in details and project solutions are user responsibility. In no event, will we be liable for any loss or damage including without limitation, indirect or consequential loss or damage, or any loss or damage whatsoever arising from loss profits arising out of or in connection with, the use of this media. All information issued by Trimo Group is subject to continuous development and information/details contained on this media are current at date of issue. It is user's responsibility to obtain most up-to-date information from Trimo when information/details are used for project. The last version of the document is available on www.trimo-group.com. Latest version of published document in English language prevails over other translated language documents. For information about the delivery of panels see Trimo's General conditions [<https://trimo-group.com/en/trimo/general-conditions-of-sale>].