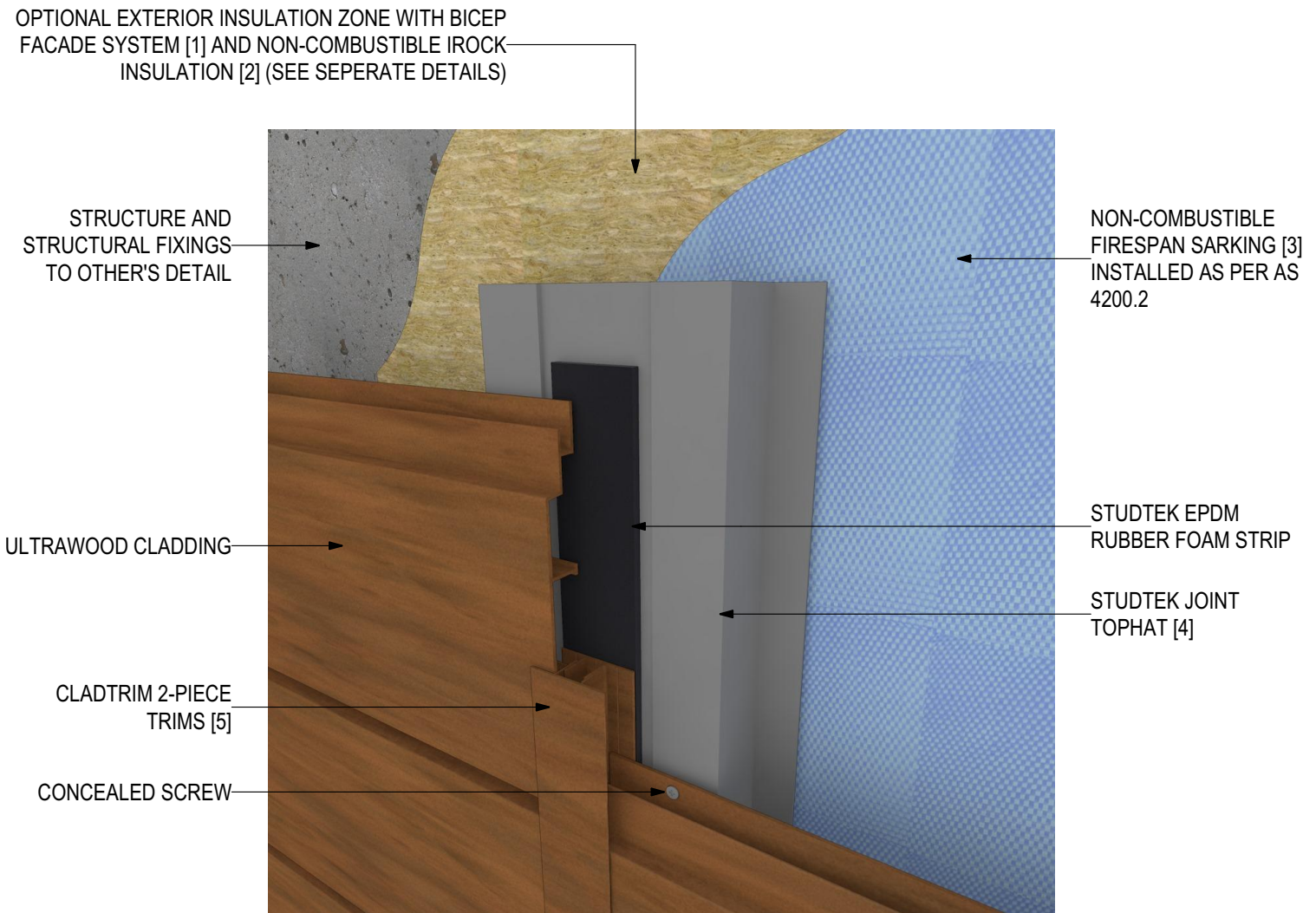




INSTALLATION DETAILS

ULTRAWOOD Horizontal Cladding Installation (V1123)



SYSTEM COMPONENTS

BICEP FACADE
SYSTEM [1]



IROCK
INSULATION [2]



FIRESPAN
SARKING [3]



STUDTEK
TOPHAT [4]



CLADTRIM
TRIMS [5]



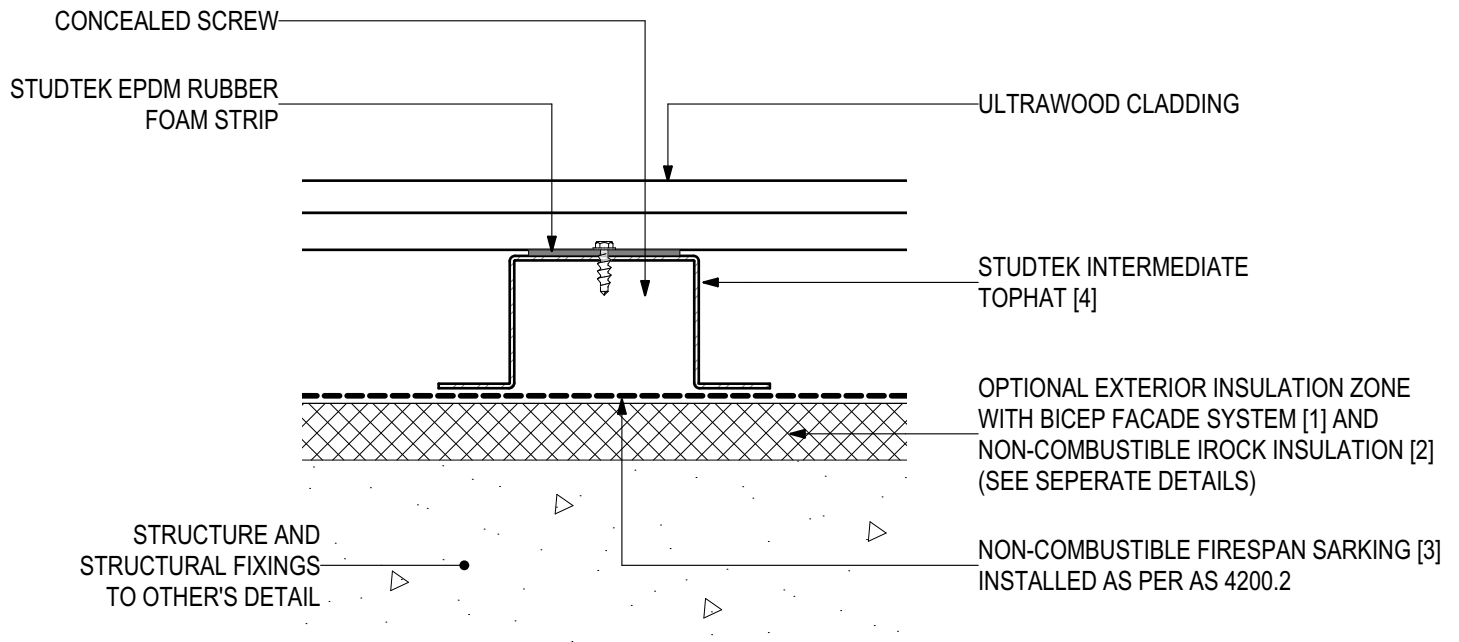
PROLASTIK
SEALANT [6]





D.01 - TYPICAL FIXING DETAILS (SCALE 1:2)

ULTRAWOOD Horizontal Cladding Installation (V1123)



SYSTEM COMPONENTS

BICEP FACADE SYSTEM [1]



IROCK INSULATION [2]



FIRESPAN SARKING [3]



STUDTEK TOPHAT [4]



CLADTRIM TRIMS [5]



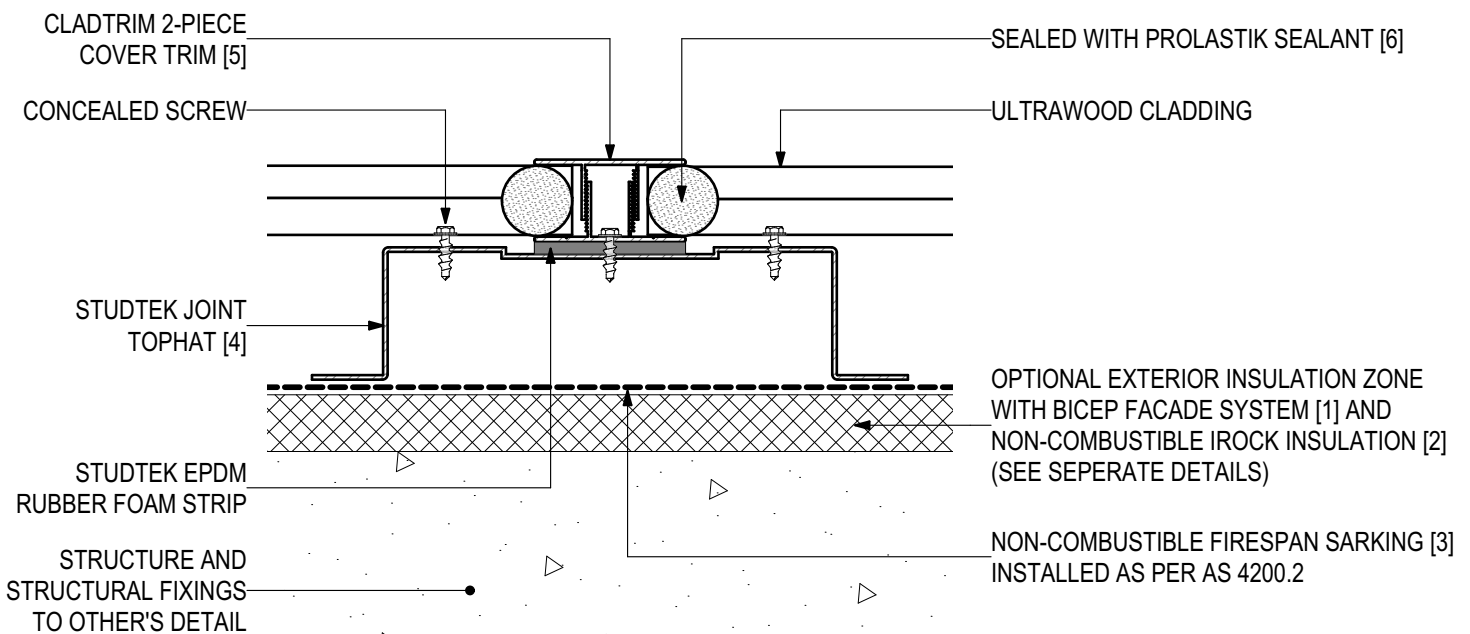
PROLASTIK SEALANT [6]





D.02 - JOINT DETAIL (SCALE 1:2)

ULTRAWOOD Horizontal Cladding Installation (V1123)



SYSTEM COMPONENTS

BICEP FACADE
SYSTEM [1]



IROCK
INSULATION [2]



FIRESPAN
SARKING [3]



STUDTEK
TOPHAT [4]



CLADTRIM
TRIMS [5]



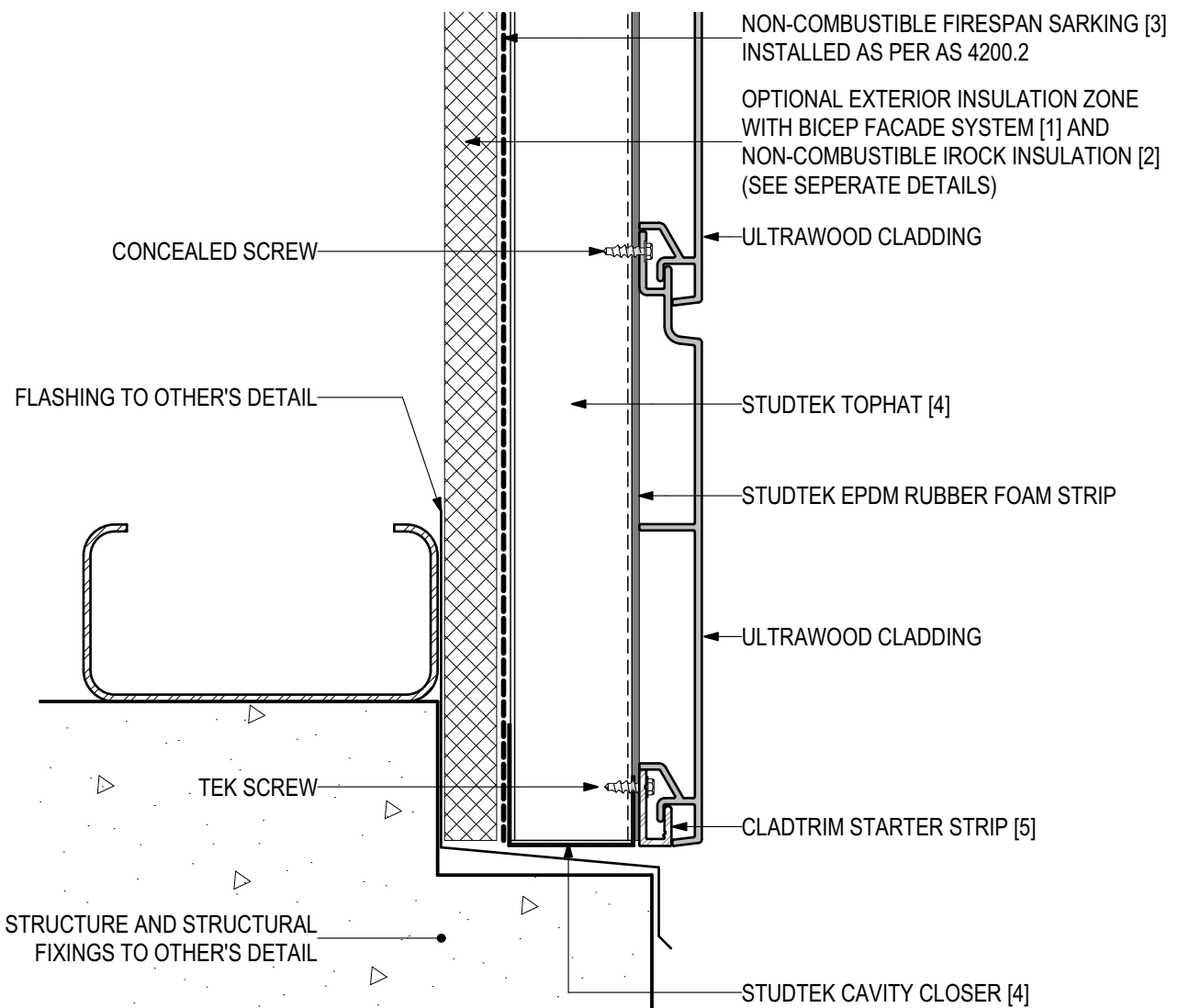
PROLASTIK
SEALANT [6]





D.03 - BASE DETAIL (SCALE 1:2)

ULTRAWOOD Horizontal Cladding Installation (V1123)



SYSTEM COMPONENTS

BICEP FACADE
SYSTEM [1]



IROCK
INSULATION [2]



FIRESpan
SARKING [3]



STUDTEK
TOPHAT [4]



CLADTRIM
TRIMS [5]



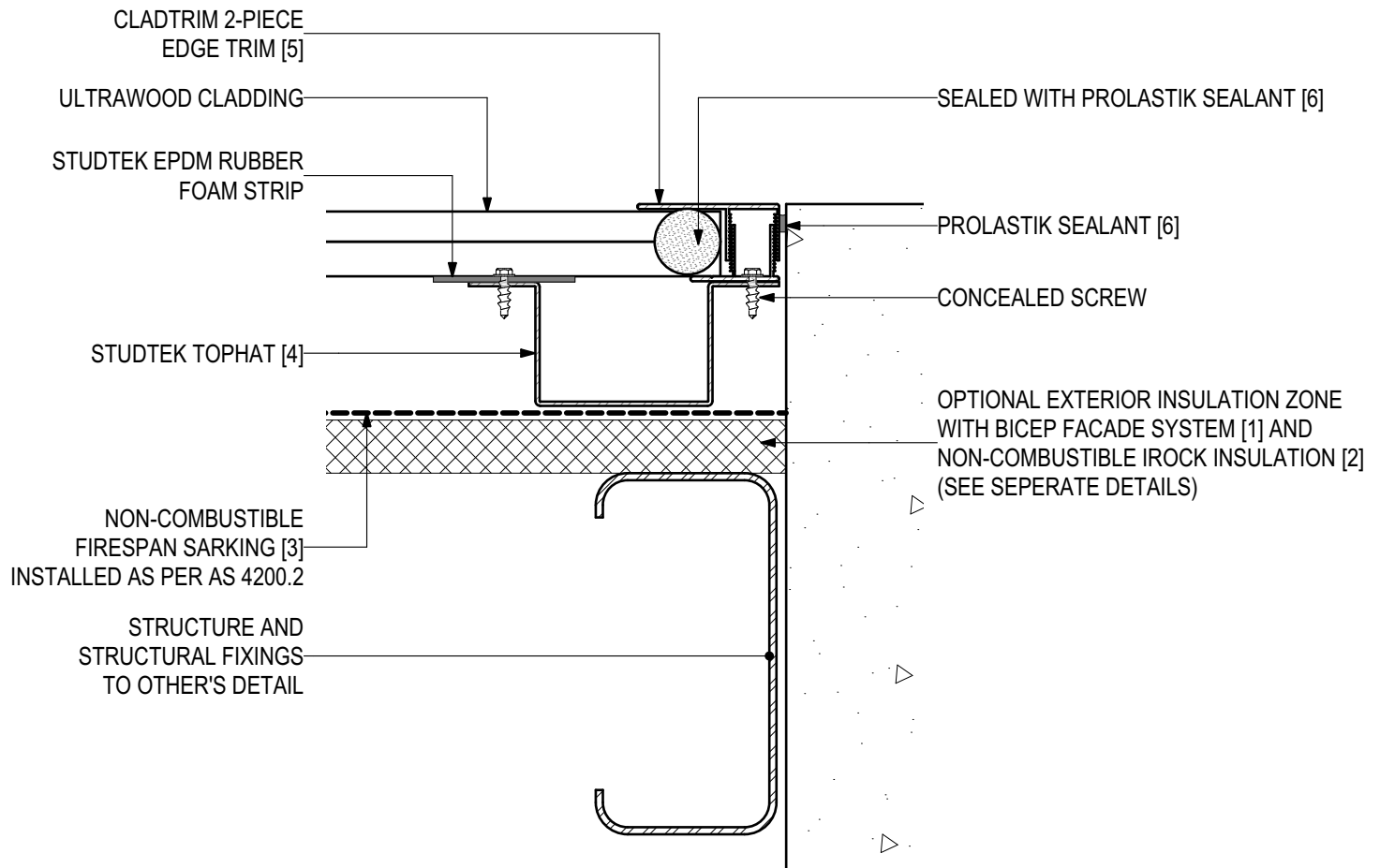
PROLASTIK
SEALANT [6]





D.04 - WALL ABUTMENT (SCALE 1:2)

ULTRAWOOD Horizontal Cladding Installation (V1123)



SYSTEM COMPONENTS

BICEP FACADE
SYSTEM [1]



IROCK
INSULATION [2]



FIRESpan
SARKING [3]



STUDTEK
TOPHAT [4]



CLADTRIM
TRIMS [5]



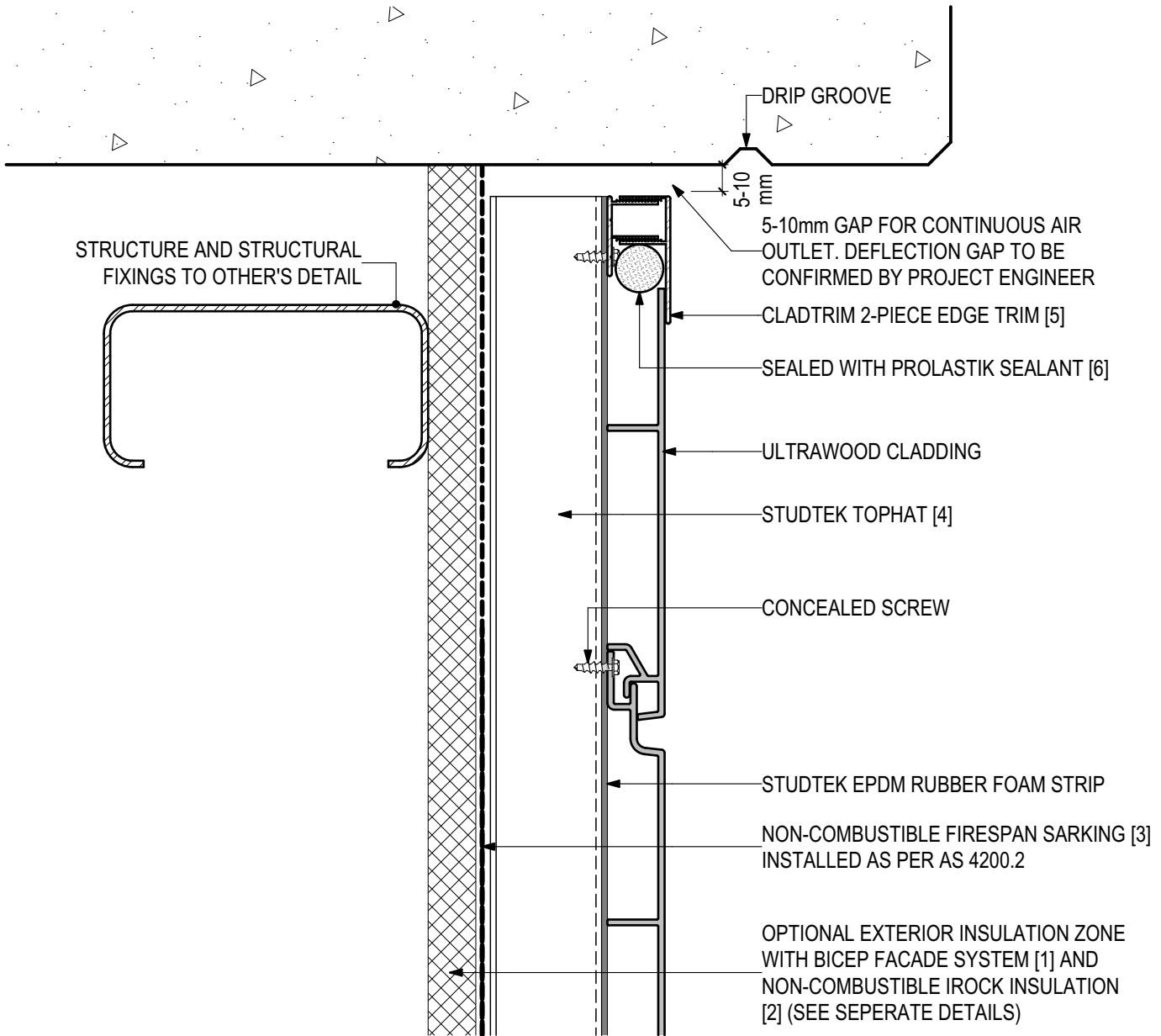
PROLASTIK
SEALANT [6]





D.05 - HEAD AT SLAB (SCALE 1:2)

ULTRAWOOD Horizontal Cladding Installation (V1123)



SYSTEM COMPONENTS

BICEP FACADE
SYSTEM [1]



IROCK
INSULATION [2]



FIRESPAN
SARKING [3]



STUDTEK
TOPHAT [4]



CLADTRIM
TRIMS [5]



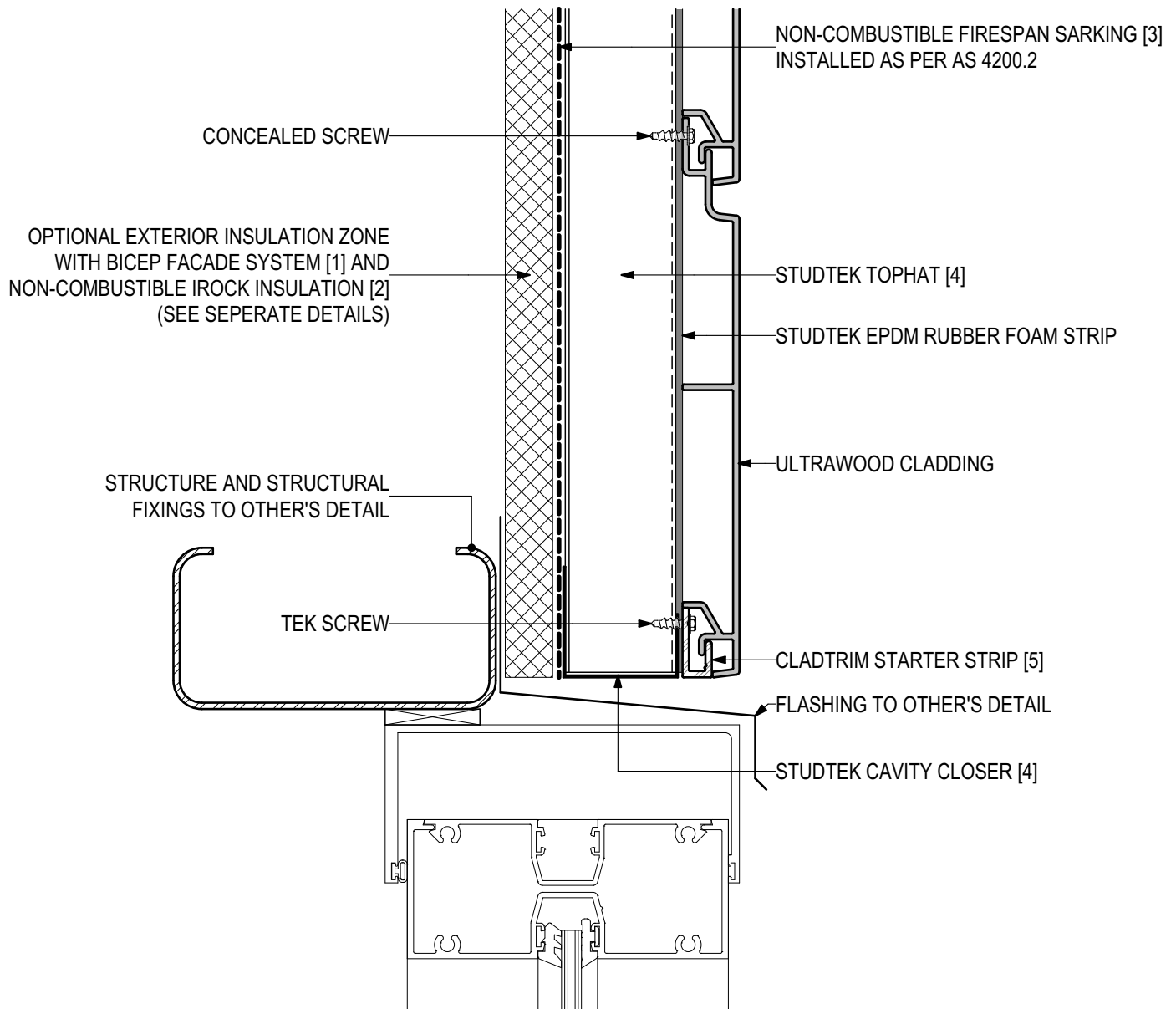
PROLASTIK
SEALANT [6]





D.06 - WINDOW HEAD (SCALE 1:2)

ULTRAWOOD Horizontal Cladding Installation (V1123)



SYSTEM COMPONENTS

BICEP FACADE
SYSTEM [1]



IROCK
INSULATION [2]



FIRESpan
SARKING [3]



STUDTEK
TOPHAT [4]



CLADTRIM
TRIMS [5]



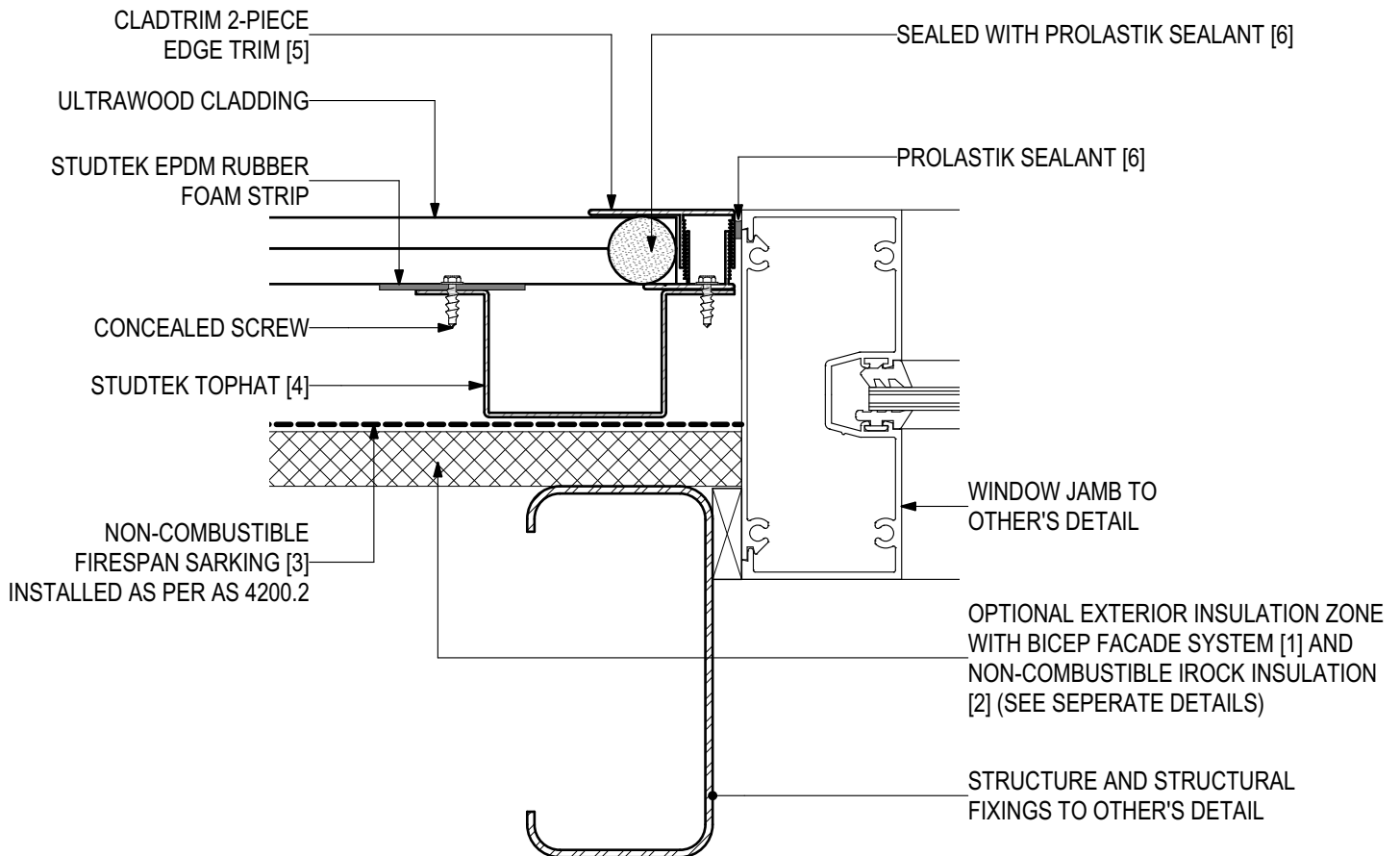
PROLASTIK
SEALANT [6]





D.07 - WINDOW JAMB (SCALE 1:2)

ULTRAWOOD Horizontal Cladding Installation (V1123)



SYSTEM COMPONENTS

BICEP FACADE
SYSTEM [1]



IROCK
INSULATION [2]



FIRESpan
SARKING [3]



STUDTEK
TOPHAT [4]



CLADTRIM
TRIMS [5]



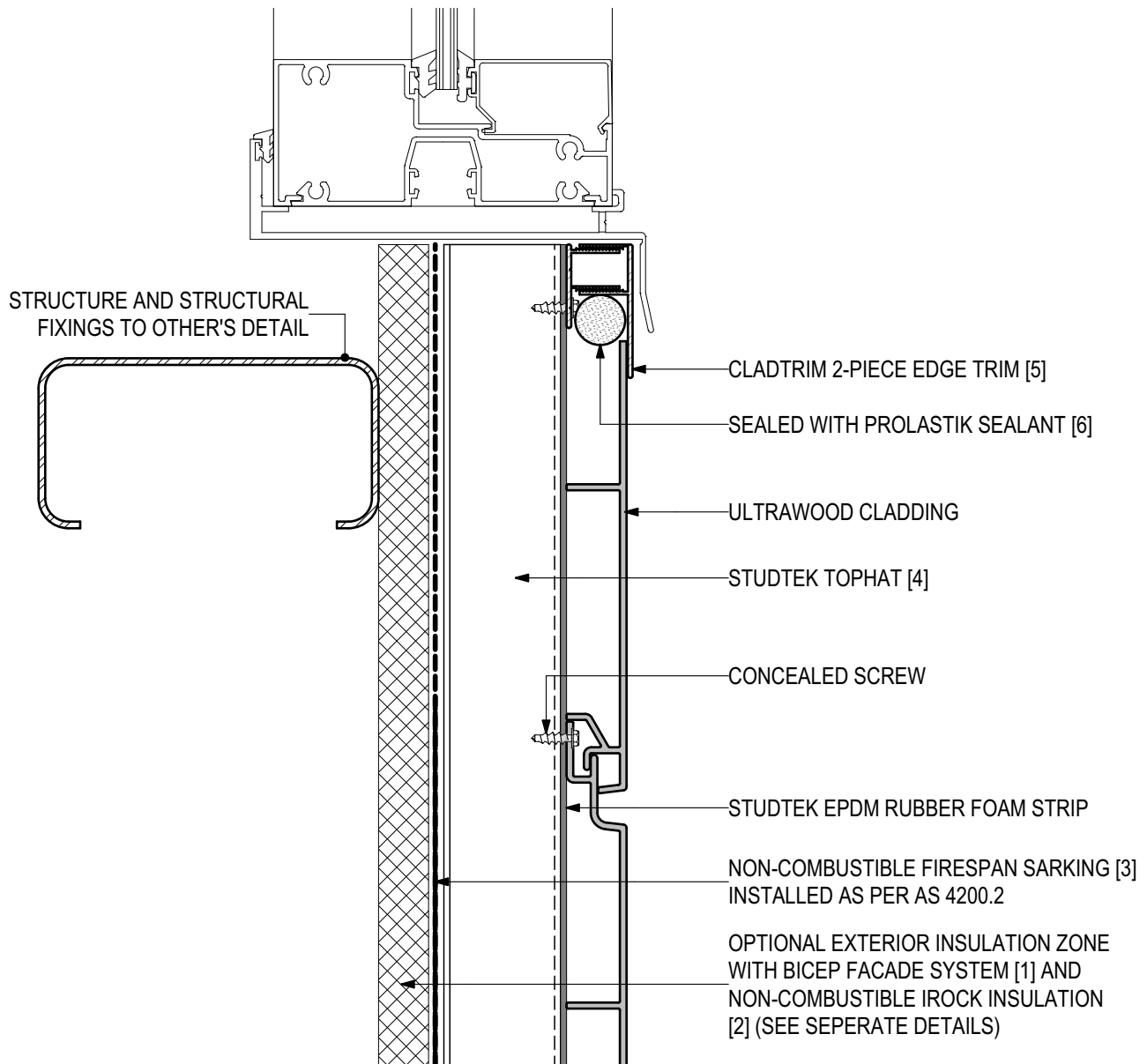
PROLASTIK
SEALANT [6]





D.08 - WINDOW SILL (SCALE 1:2)

ULTRAWOOD Horizontal Cladding Installation (V1123)



SYSTEM COMPONENTS

BICEP FACADE
SYSTEM [1]



IROCK
INSULATION [2]



FIRESpan
SARKING [3]



STUDEK
TOPHAT [4]



CLADTRIM
TRIMS [5]



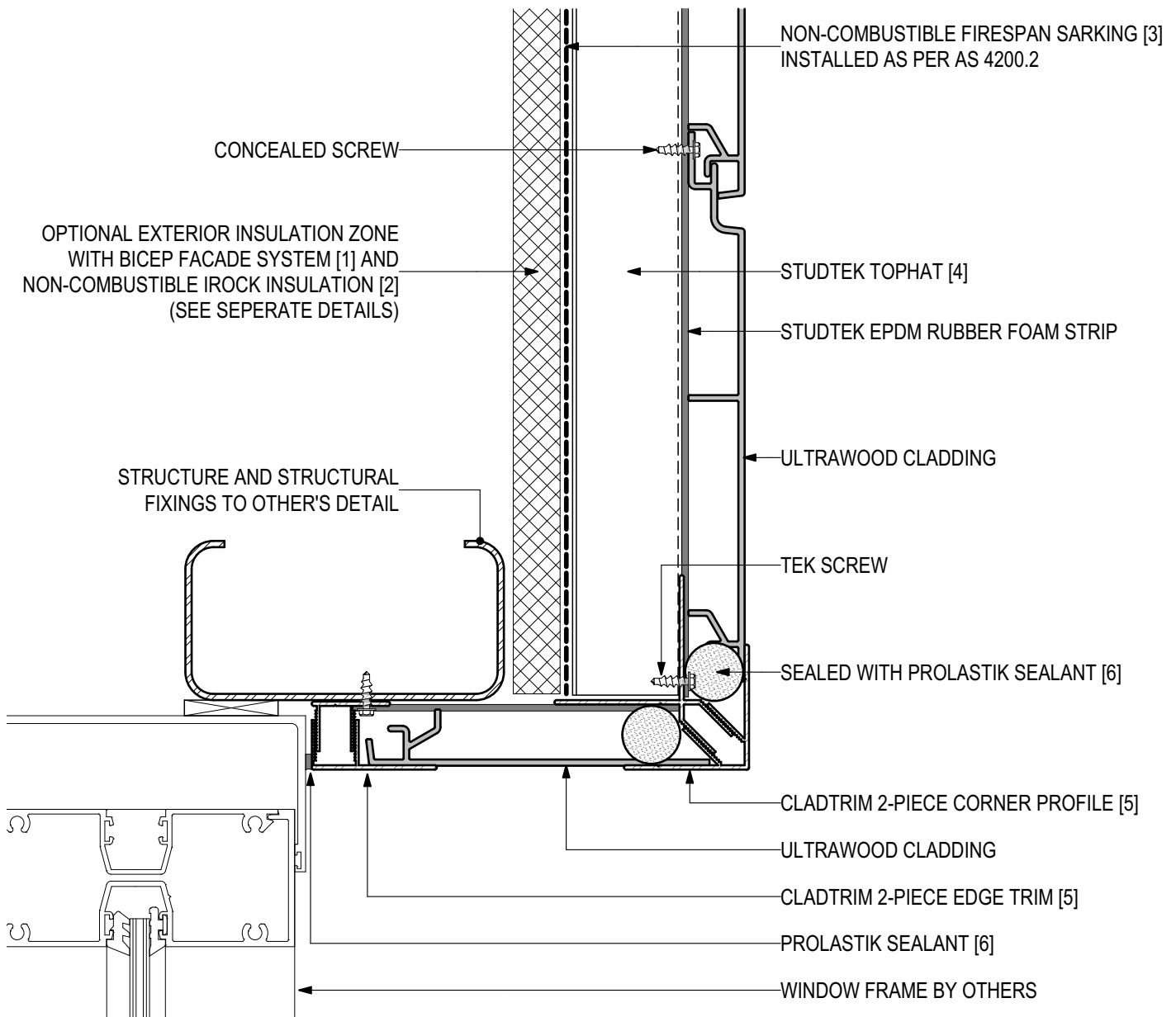
PROLASTIK
SEALANT [6]





D.09 - INSET WINDOW HEAD (SCALE 1:2)

ULTRAWOOD Horizontal Cladding Installation (V1123)



SYSTEM COMPONENTS

BICEP FACADE
SYSTEM [1]



IROCK
INSULATION [2]



FIRESpan
SARKING [3]



STUDTEK
TOPHAT [4]



CLADTRIM
TRIMS [5]



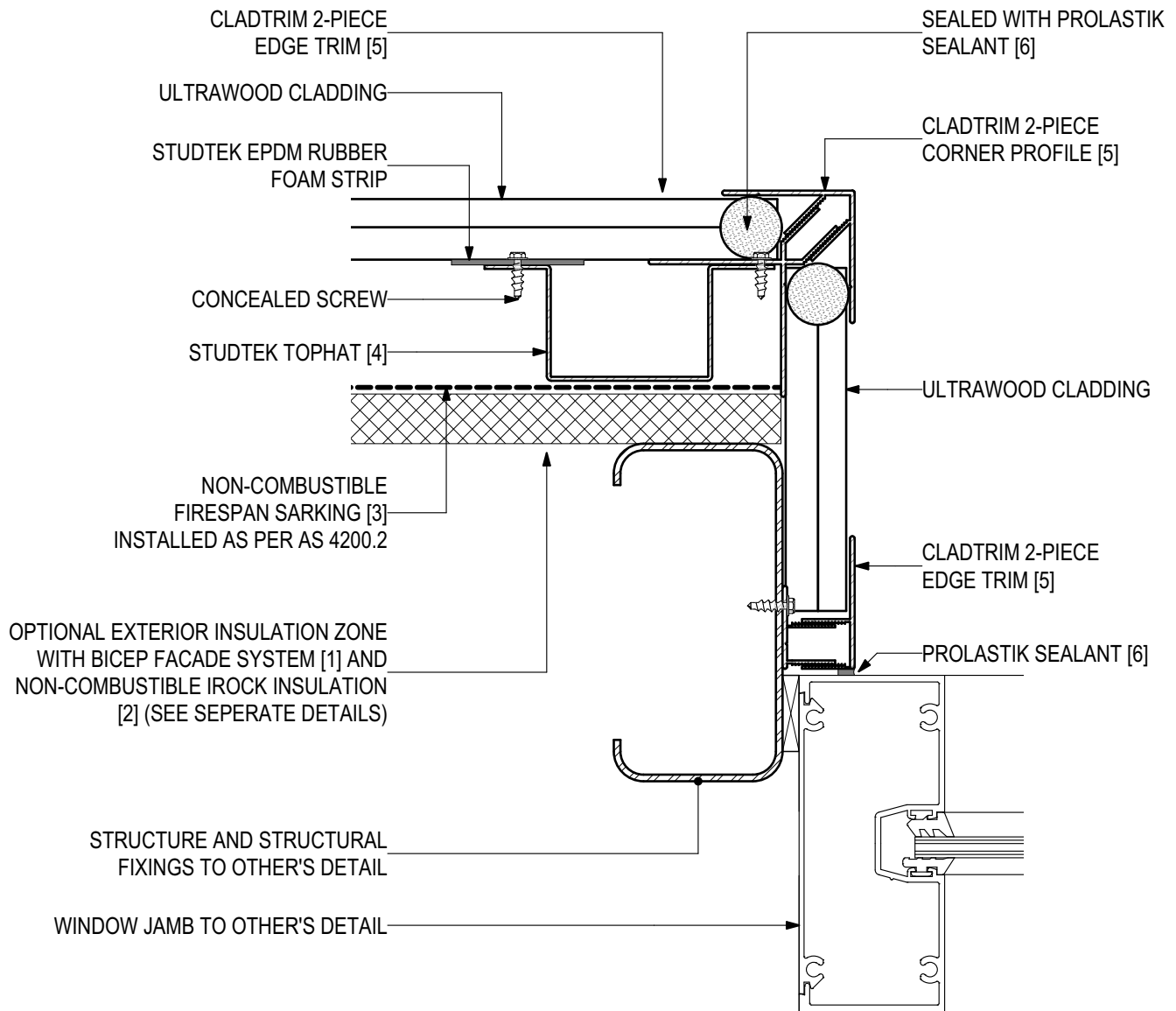
PROLASTIK
SEALANT [6]





D.10 - INSET WINDOW JAMB (SCALE 1:2)

ULTRAWOOD Horizontal Cladding Installation (V1123)



SYSTEM COMPONENTS

BICEP FACADE
SYSTEM [1]



IROCK
INSULATION [2]



FIRESKIN
SARKING [3]



STUDTEK
TOPHAT [4]



CLADTRIM
TRIMS [5]



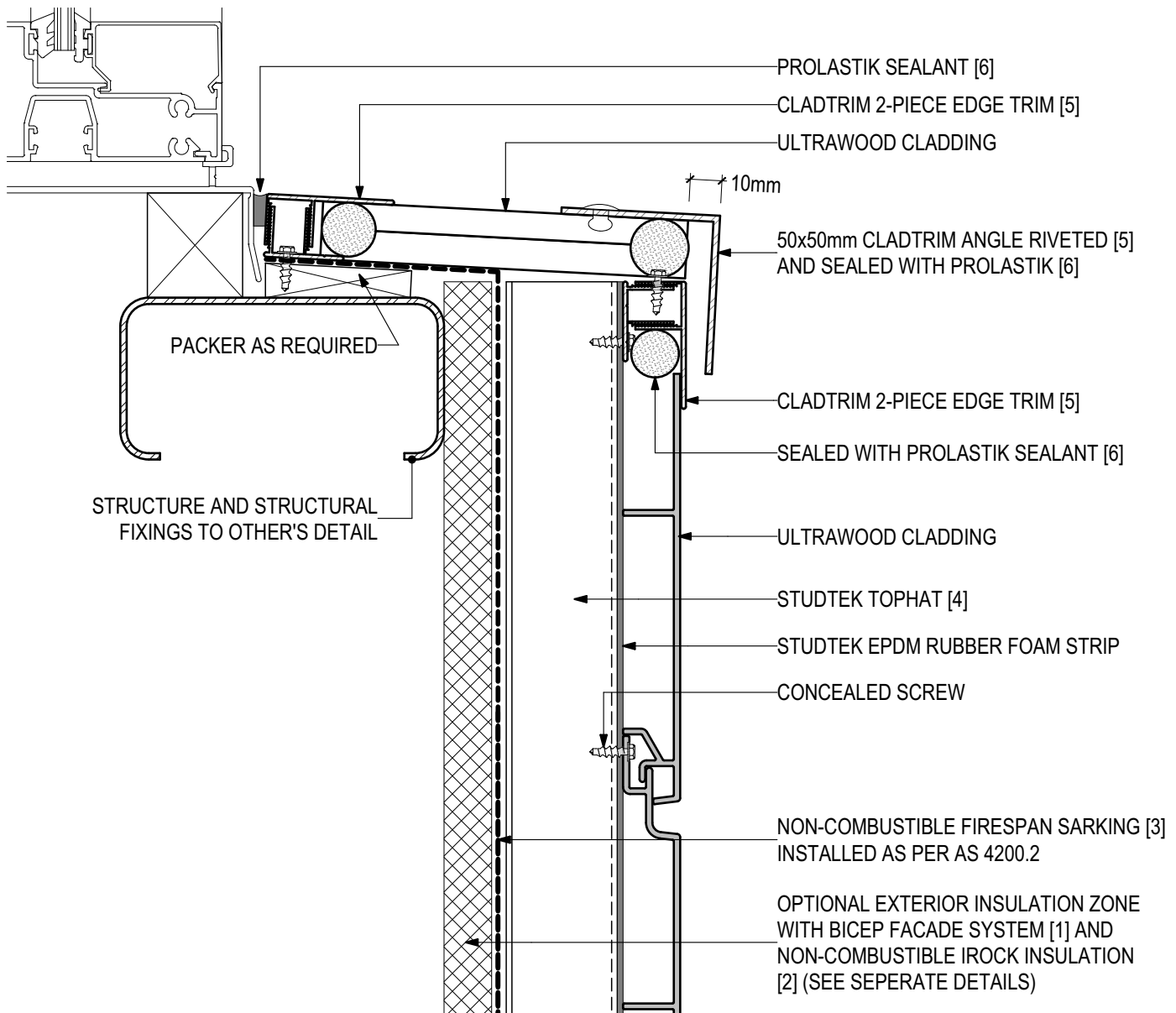
PROLASTIK
SEALANT [6]





D.11 - INSET WINDOW SILL (SCALE 1:2)

ULTRAWOOD Horizontal Cladding Installation (V1123)



SYSTEM COMPONENTS

BICEP FACADE
SYSTEM [1]



IROCK
INSULATION [2]



FIRESpan
SARKING [3]



STUDTEK
TOPHAT [4]



CLADTRIM
TRIMS [5]



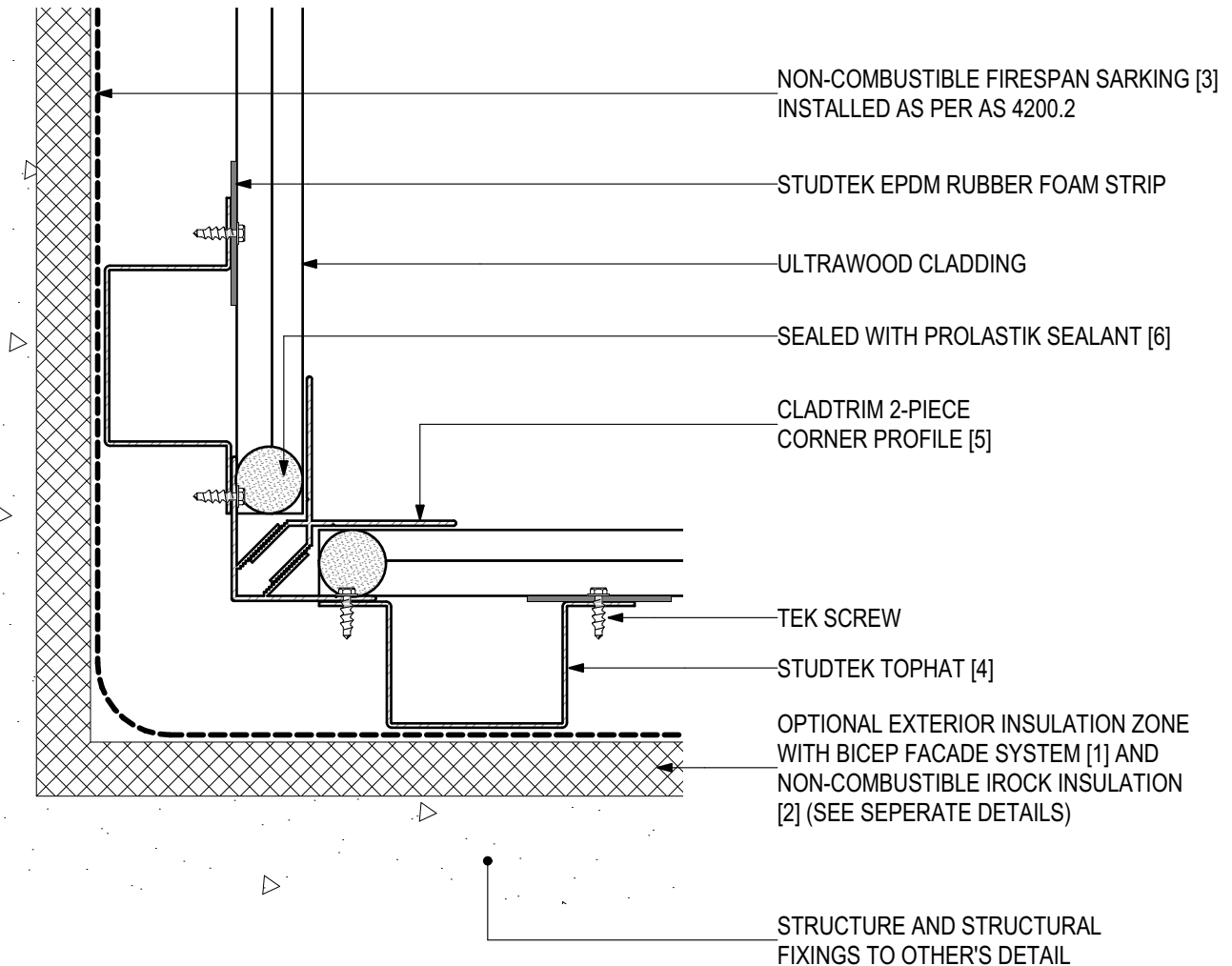
PROLASTIK
SEALANT [6]





D.12 - INTERNAL CORNER (SCALE 1:2)

ULTRAWOOD Horizontal Cladding Installation (V1123)



SYSTEM COMPONENTS

BICEP FACADE
SYSTEM [1]



IROCK
INSULATION [2]



FIRESPAN
SARKING [3]



STUDTEK
TOPHAT [4]



CLADTRIM
TRIMS [5]



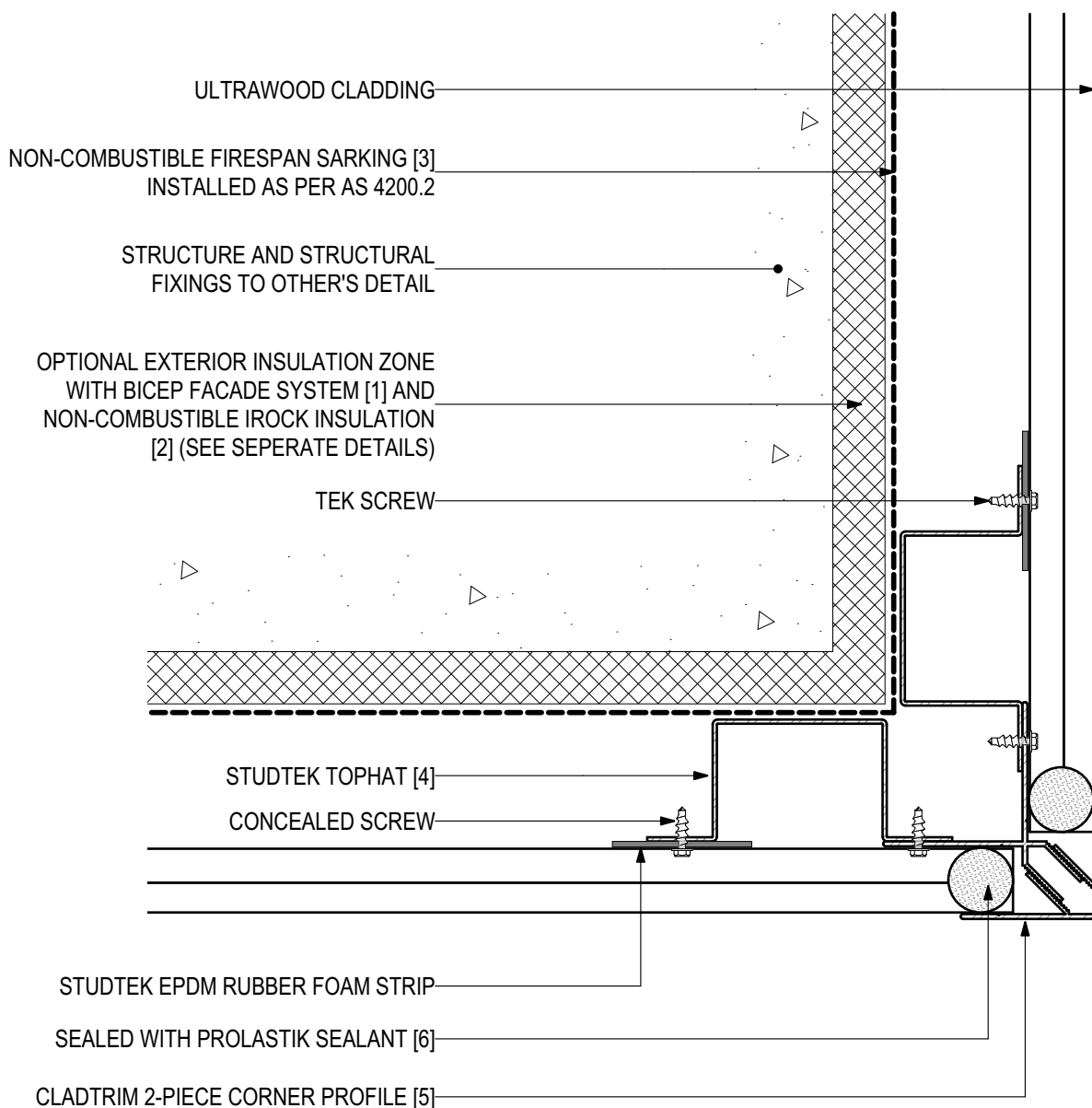
PROLASTIK
SEALANT [6]





D.13 - EXTERNAL CORNER (SCALE 1:2)

ULTRAWOOD Horizontal Cladding Installation (V1123)



SYSTEM COMPONENTS

BICEP FACADE
SYSTEM [1]



IROCK
INSULATION [2]



FIRESPAN
SARKING [3]



STUDTEK
TOPHAT [4]



CLADTRIM
TRIMS [5]



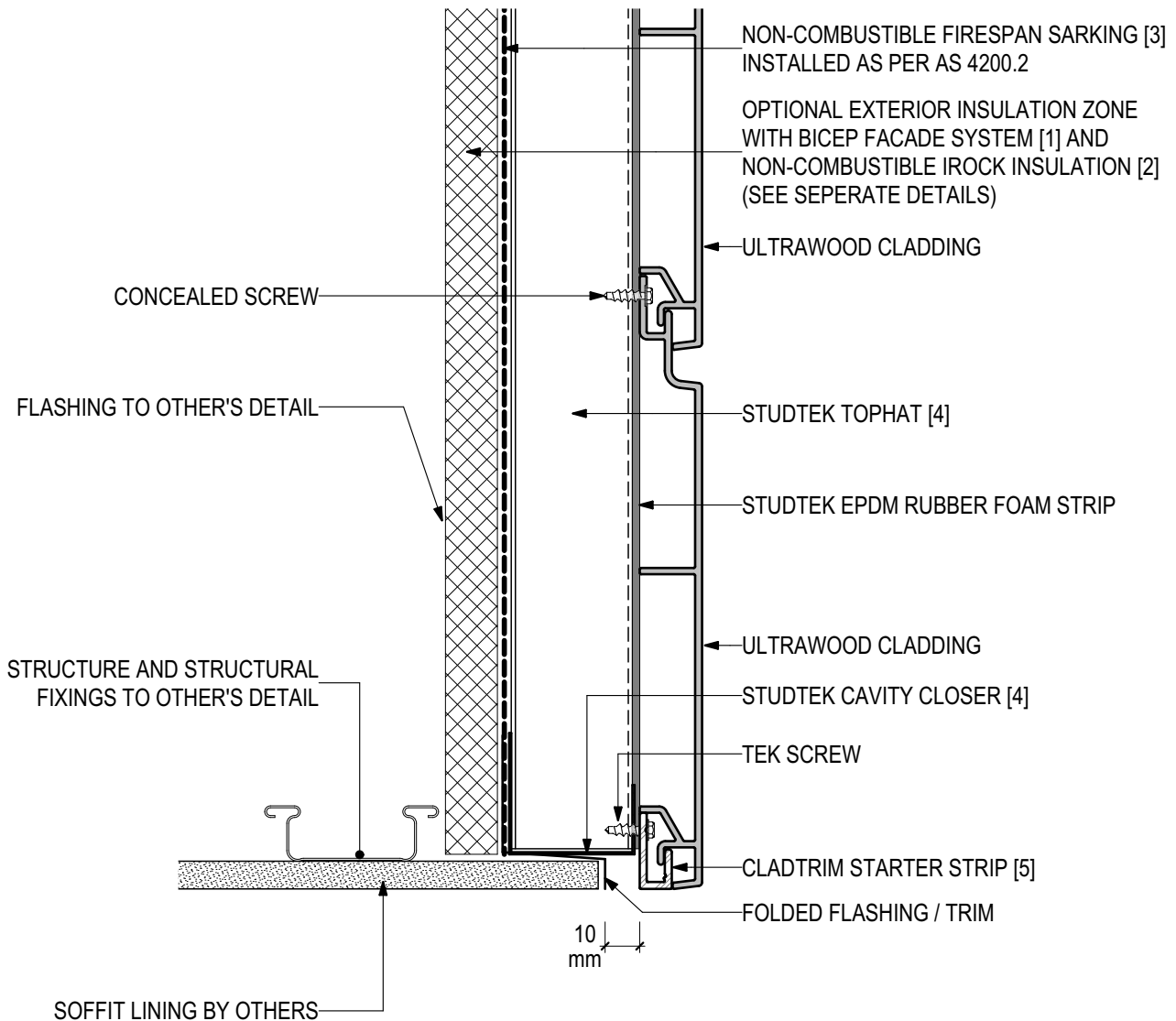
PROLASTIK
SEALANT [6]





D.14 - EAVE JUNCTION (SCALE 1:2)

ULTRAWOOD Horizontal Cladding Installation (V1123)



SYSTEM COMPONENTS

BICEP FACADE
SYSTEM [1]



IROCK
INSULATION [2]



FIRESPAN
SARKING [3]



STUDEK
TOPHAT [4]



CLADTRIM
TRIMS [5]



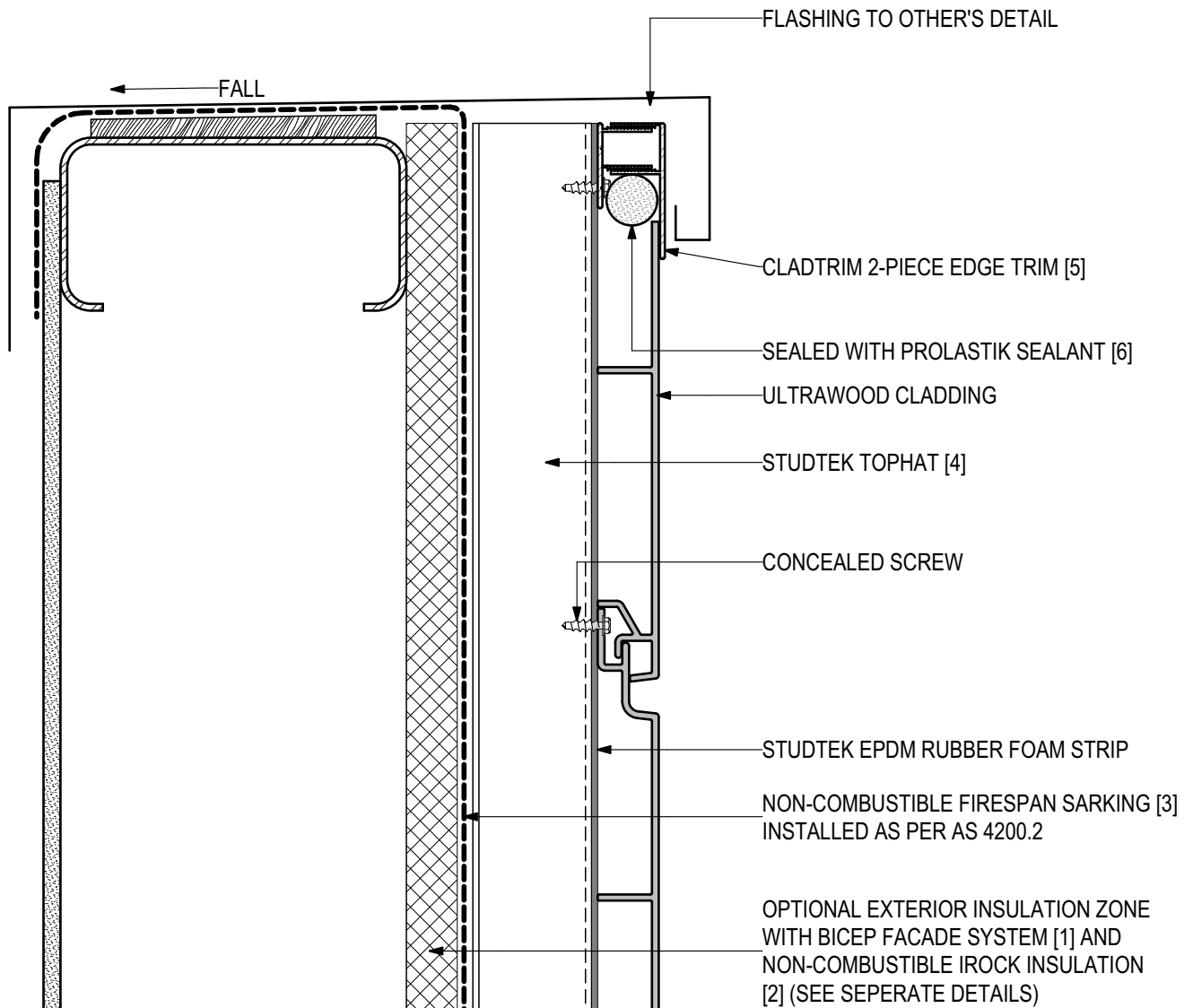
PROLASTIK
SEALANT [6]





D.15 - PARAPET DETAIL (SCALE 1:2)

ULTRAWOOD Horizontal Cladding Installation (V1123)



SYSTEM COMPONENTS

BICEP FACADE
SYSTEM [1]



IROCK
INSULATION [2]



FIRESpan
SARKING [3]



STUDEK
TOPHAT [4]



CLADTRIM
TRIMS [5]



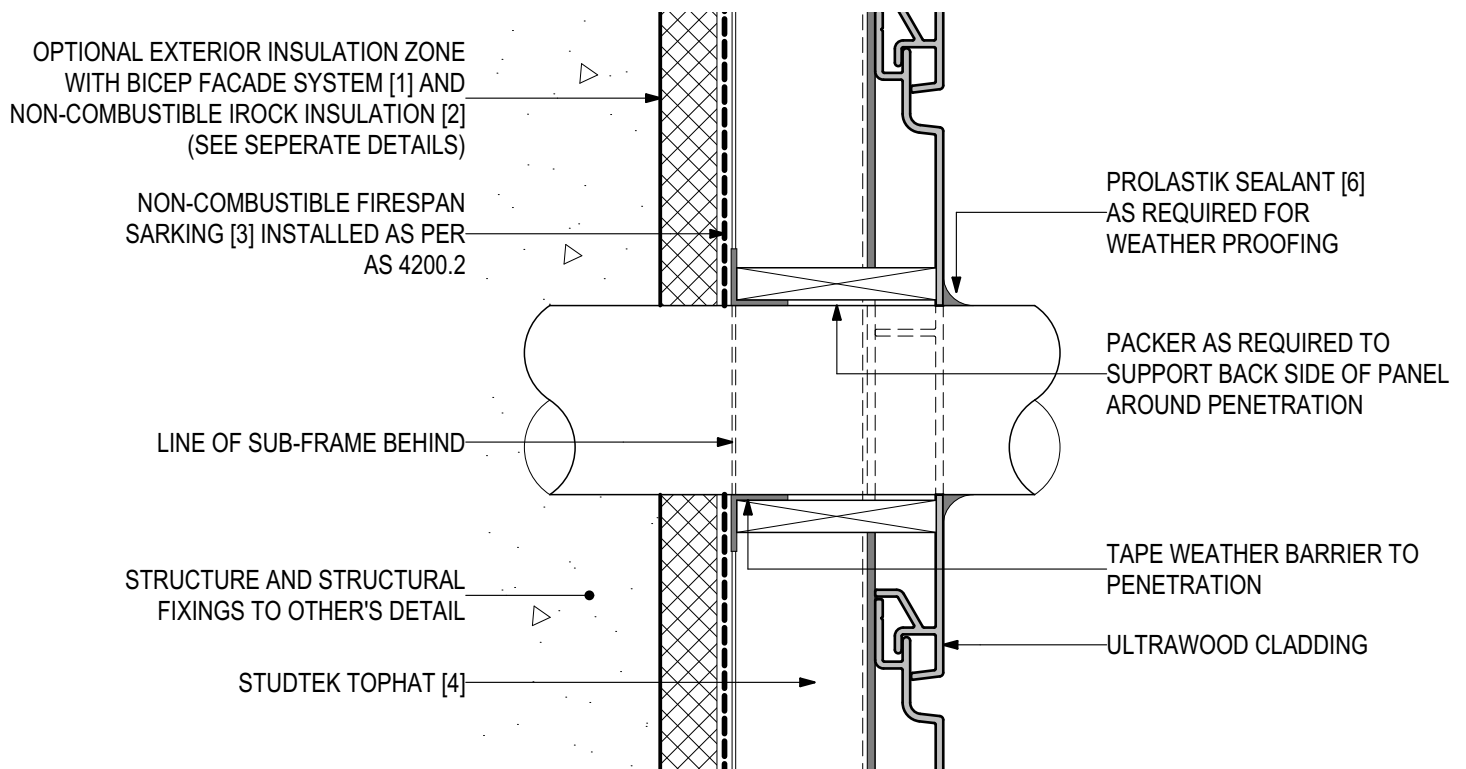
PROLASTIK
SEALANT [6]





D.16 - TYPICAL PENETRATION DETAIL (SCALE 1:2)

ULTRAWOOD Horizontal Cladding Installation (V1123)



SYSTEM COMPONENTS

BICEP FACADE
SYSTEM [1]



IROCK
INSULATION [2]



FIRESPAN
SARKING [3]



STUDTEK
TOPHAT [4]



CLADTRIM
TRIMS [5]



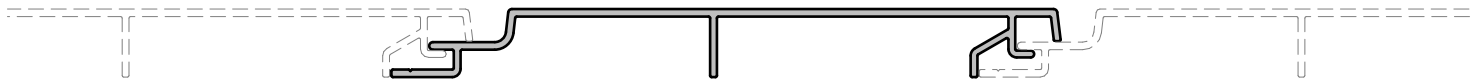
PROLASTIK
SEALANT [6]



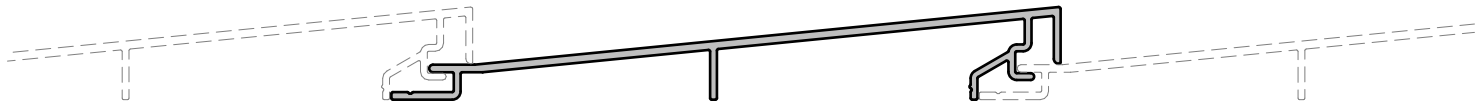


ULTRAWOOD PROFILES (SCALE 1:2)

ULTRAWOOD Horizontal Cladding Installation (V1123)



ULTRAWOOD 155x18mm GROOVE PROFILE



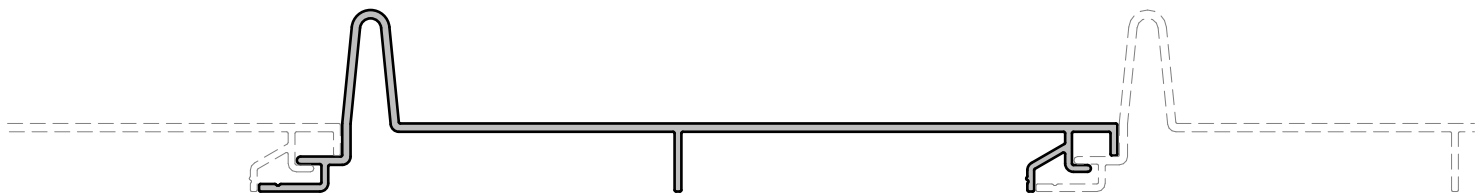
ULTRAWOOD 155x25mm CABIN PROFILE



ULTRAWOOD 155x18mm CONCAVE PROFILE



ULTRAWOOD 155x18mm DUOCAVE PROFILE



ULTRAWOOD 205x48mm SEAM PROFILE

SYSTEM COMPONENTS

BICEP FACADE
SYSTEM [1]



IROCK
INSULATION [2]



FIRESpan
SARKING [3]



STUDTEK
TOPHAT [4]



CLADTRIM
TRIMS [5]



PROLASTIK
SEALANT [6]

