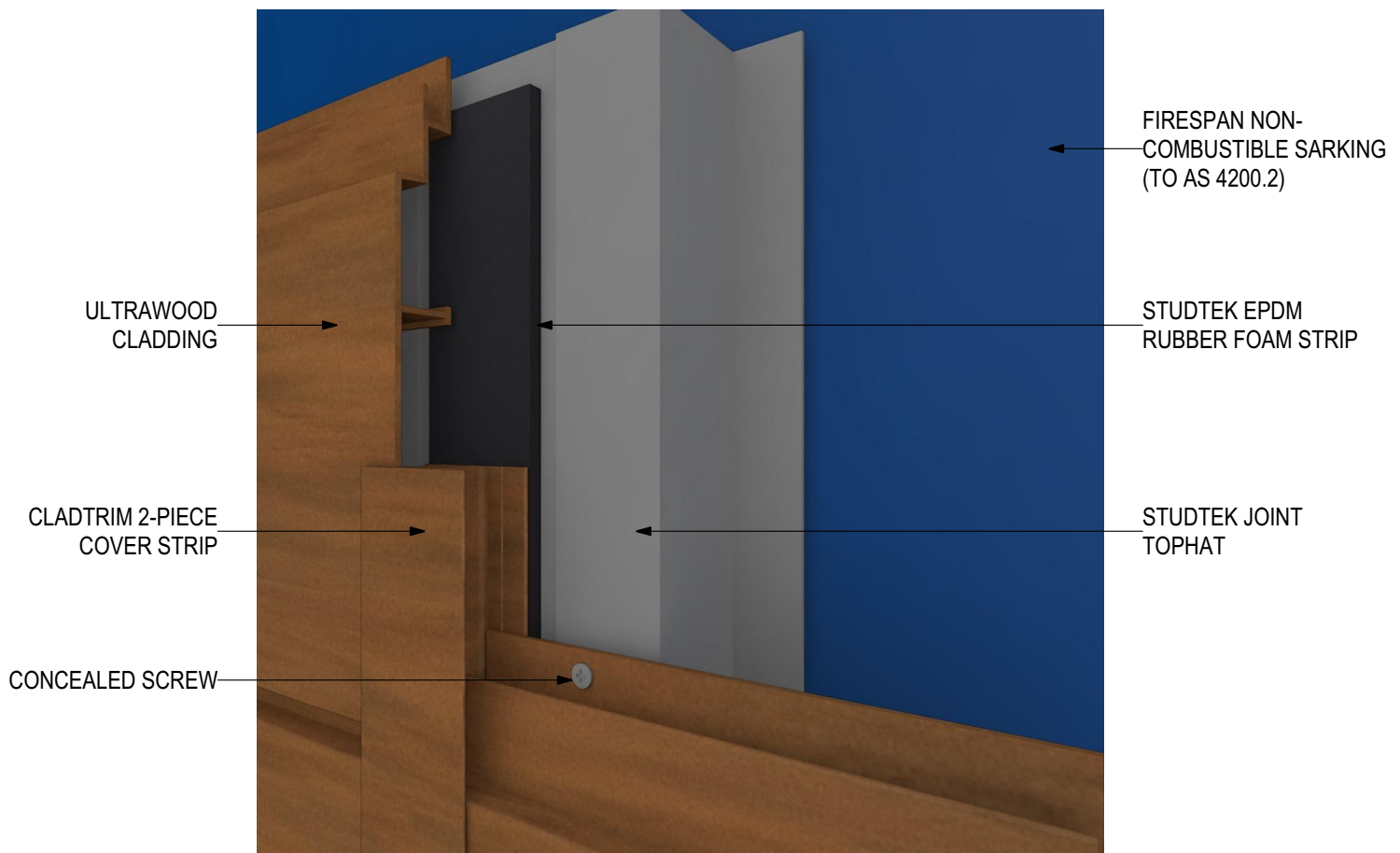


# ULTRAWOOD Non-combustible Timber Cladding (V1219) UW-GR-CSF Concealed Screw Fix (Horizontal Installation)

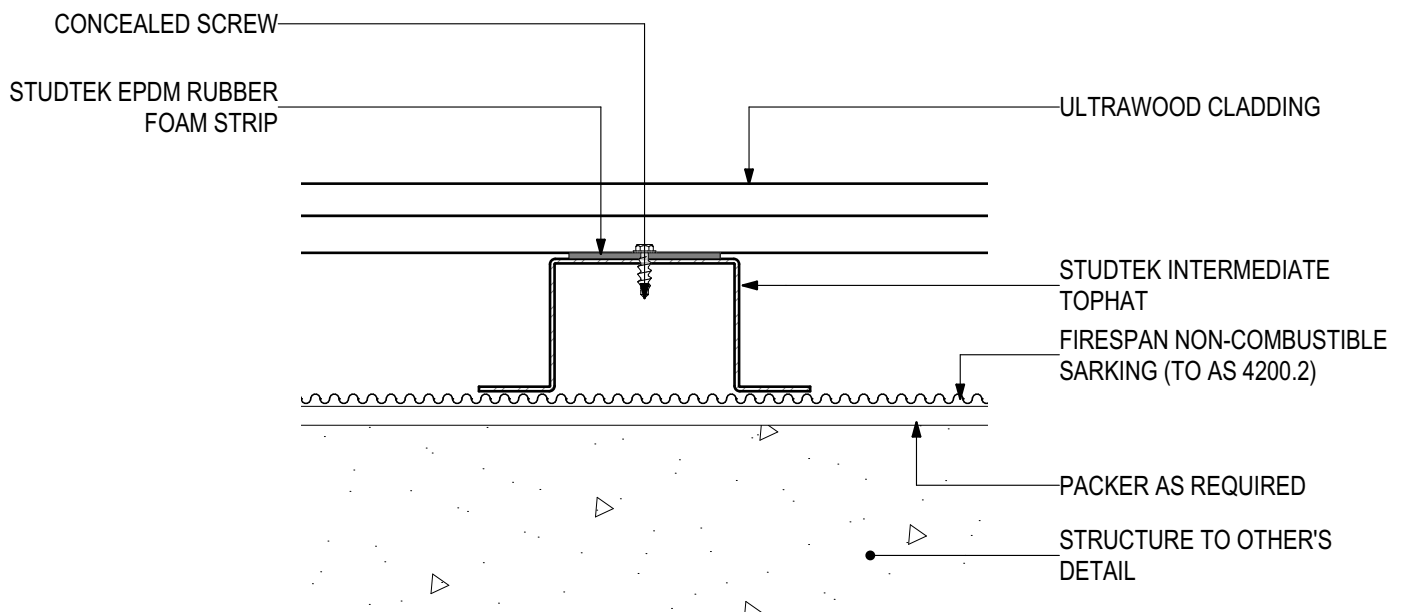


## INSTALLATION DETAILS

Disclaimer: These details are general design details for use as a guide. Any use is at the user's own discretion and risk. All detailing and installation should be in accordance with all the relevant codes and standards as per current NCC requirements.

**Blue Chip Group Pty Ltd**  
P: 08 9451 2344  
F: 08 9451 8983  
E: [sales@bluechipgroup.net.au](mailto:sales@bluechipgroup.net.au)

# ULTRAWOOD Non-combustible Timber Cladding (V1219) UW-GR-CSF Concealed Screw Fix (Horizontal Installation)



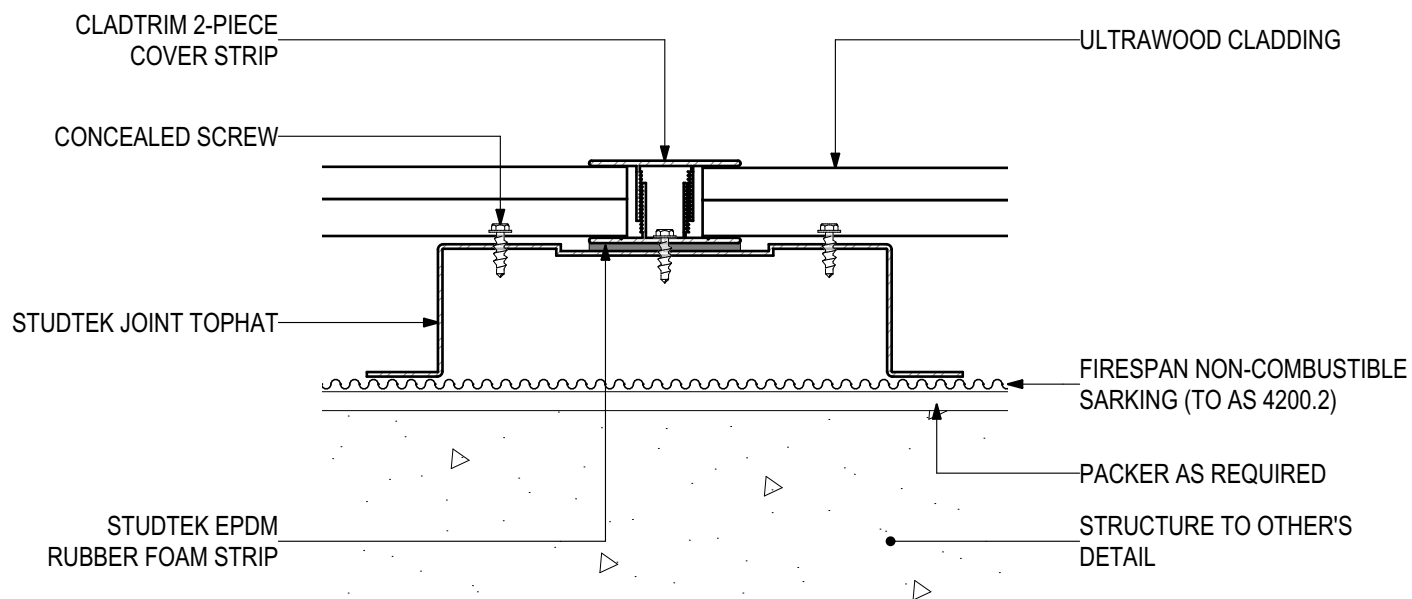
## D.01 - TYPICAL FIXING DETAILS

SCALE 1:2

Disclaimer: These details are general design details for use as a guide. Any use is at the user's own discretion and risk. All detailing and installation should be in accordance with all the relevant codes and standards as per current NCC requirements.

**Blue Chip Group Pty Ltd**  
P: 08 9451 2344  
F: 08 9451 8983  
E: sales@bluechipgroup.net.au

# ULTRAWOOD Non-combustible Timber Cladding (V1219) UW-GR-CSF Concealed Screw Fix (Horizontal Installation)



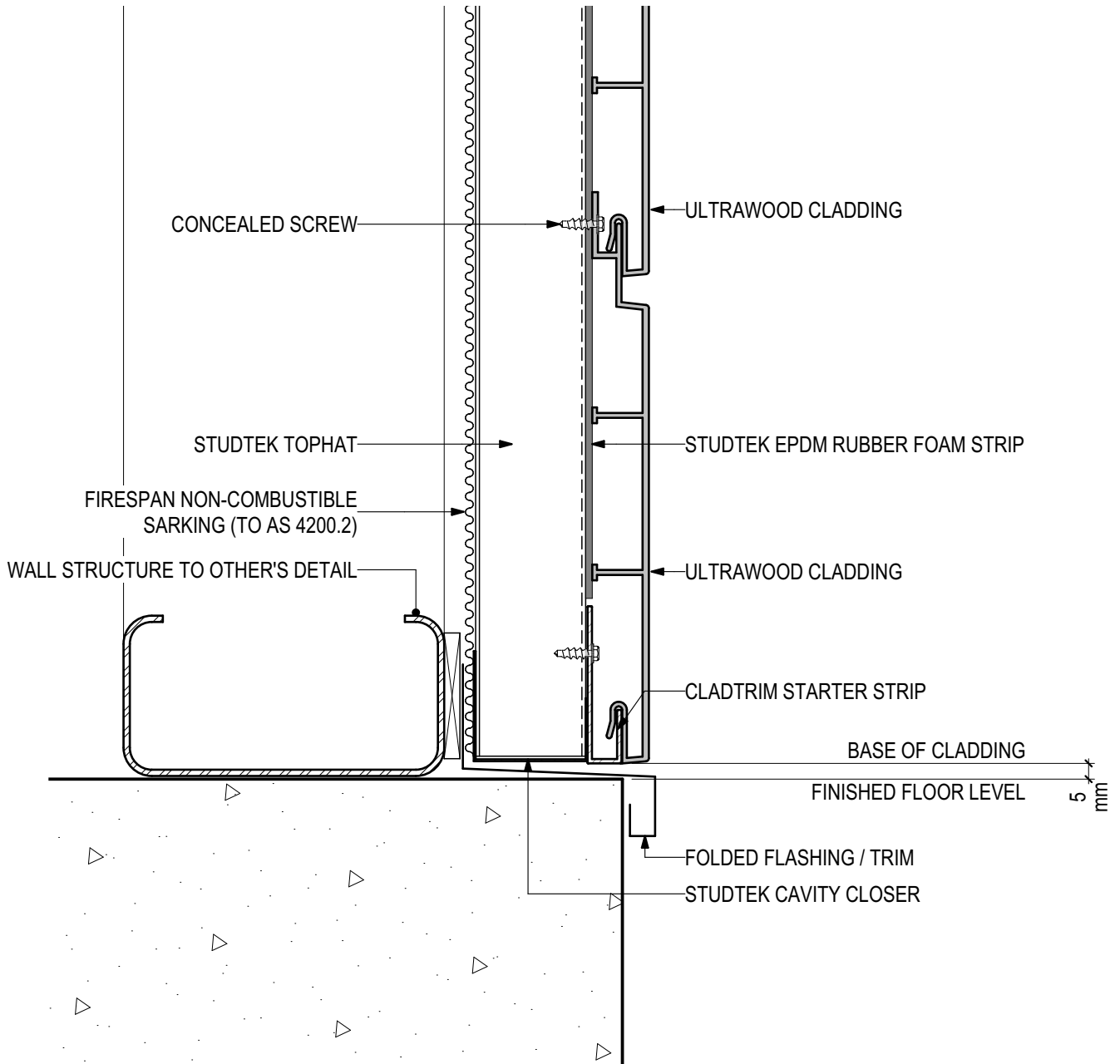
## D.02 - JOINT DETAIL

SCALE 1:2

Disclaimer: These details are general design details for use as a guide. Any use is at the user's own discretion and risk. All detailing and installation should be in accordance with all the relevant codes and standards as per current NCC requirements.

**Blue Chip Group Pty Ltd**  
P: 08 9451 2344  
F: 08 9451 8983  
E: sales@bluechipgroup.net.au

# ULTRAWOOD Non-combustible Timber Cladding (V1219) UW-GR-CSF Concealed Screw Fix (Horizontal Installation)



## D.03 - BASE DETAIL

SCALE 1:2

Disclaimer: These details are general design details for use as a guide. Any use is at the user's own discretion and risk. All detailing and installation should be in accordance with all the relevant codes and standards as per current NCC requirements.

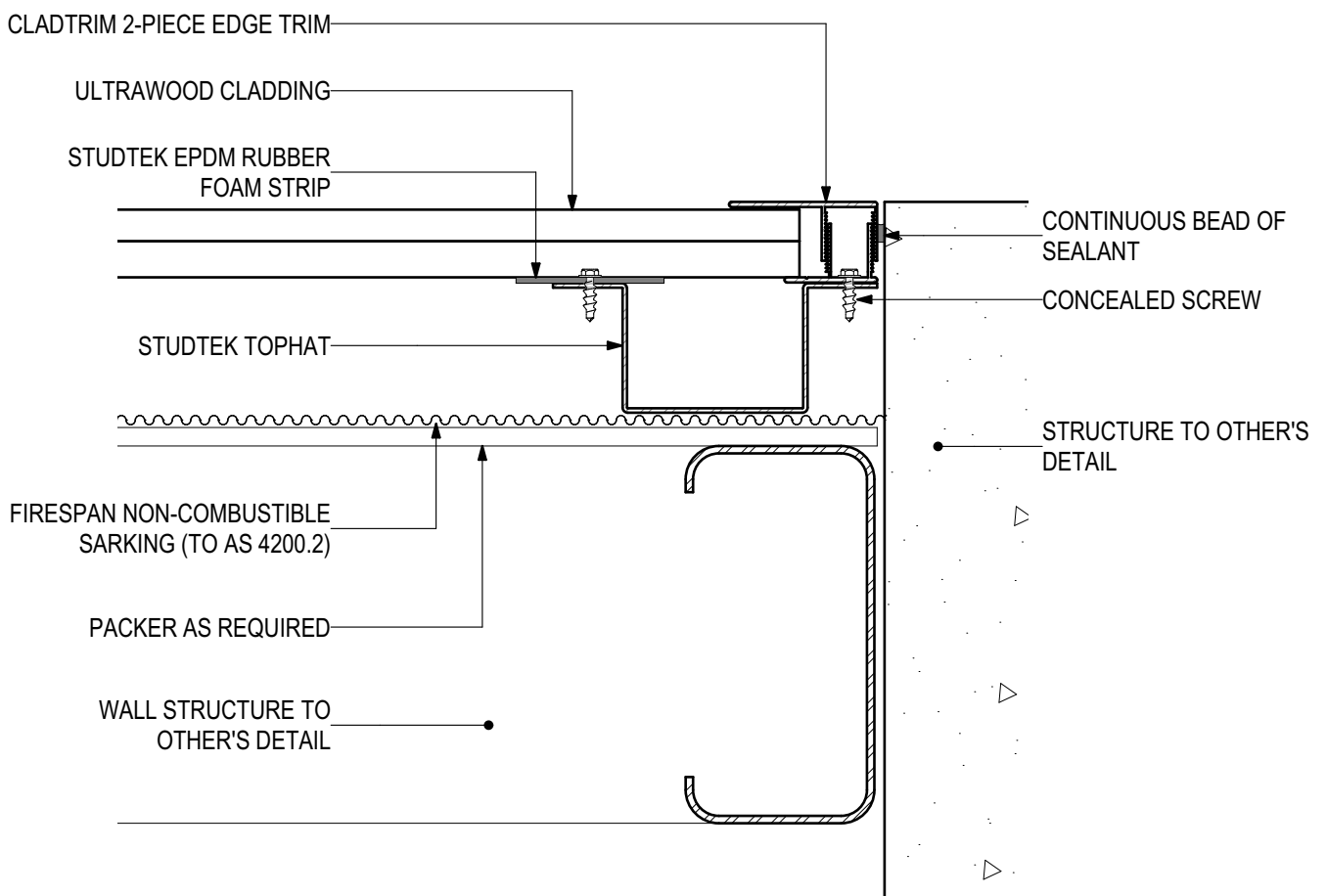
**Blue Chip Group Pty Ltd**

P: 08 9451 2344

F: 08 9451 8983

E: sales@bluechipgroup.net.au

# ULTRAWOOD Non-combustible Timber Cladding (V1219) UW-GR-CSF Concealed Screw Fix (Horizontal Installation)



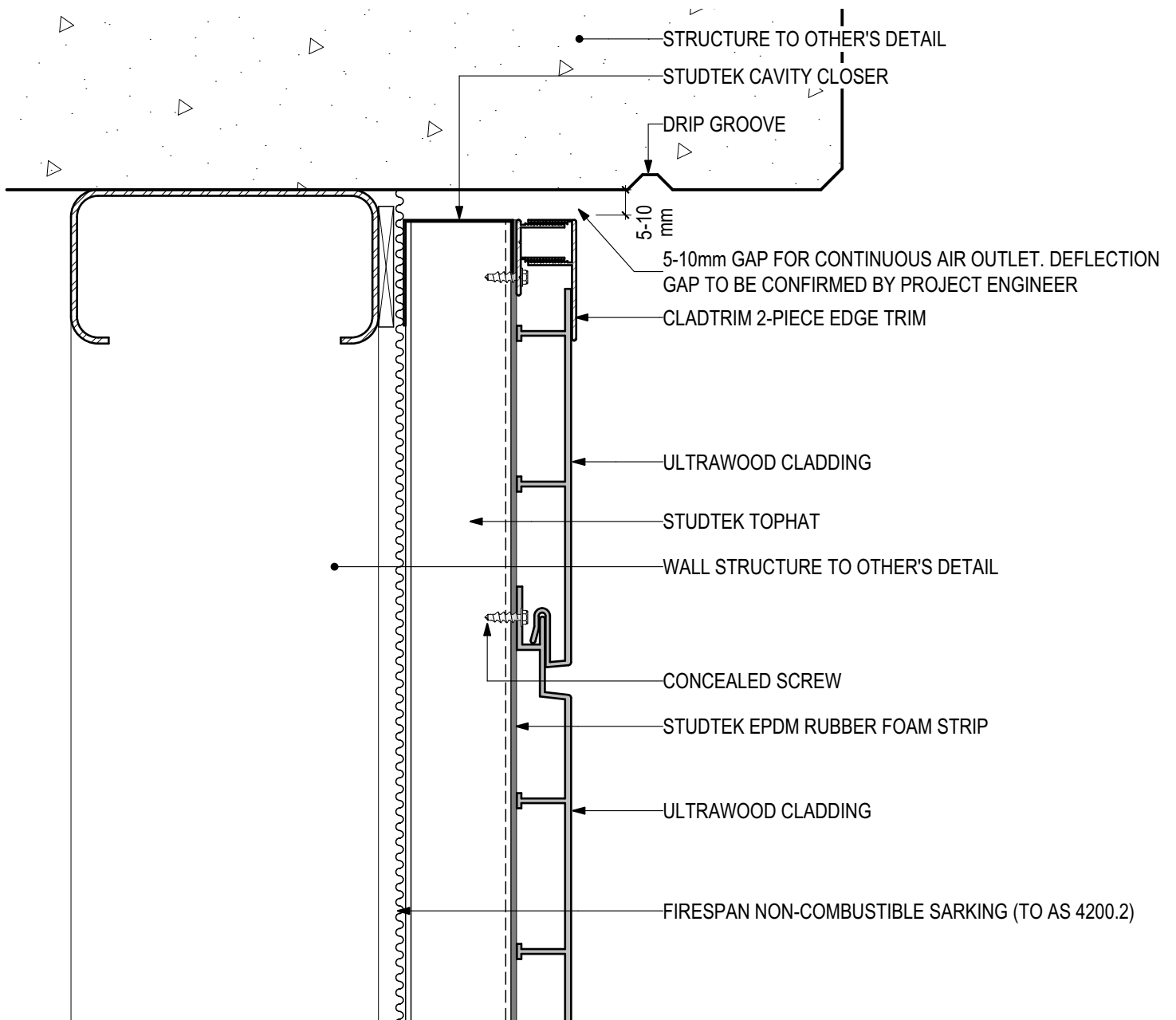
## D.04 - WALL ABUTMENT

SCALE 1:2

Disclaimer: These details are general design details for use as a guide. Any use is at the user's own discretion and risk. All detailing and installation should be in accordance with all the relevant codes and standards as per current NCC requirements.

**Blue Chip Group Pty Ltd**  
P: 08 9451 2344  
F: 08 9451 8983  
E: sales@bluechipgroup.net.au

**ULTRAWOOD Non-combustible Timber Cladding (V1219)**  
**UW-GR-CSF Concealed Screw Fix (Horizontal Installation)**



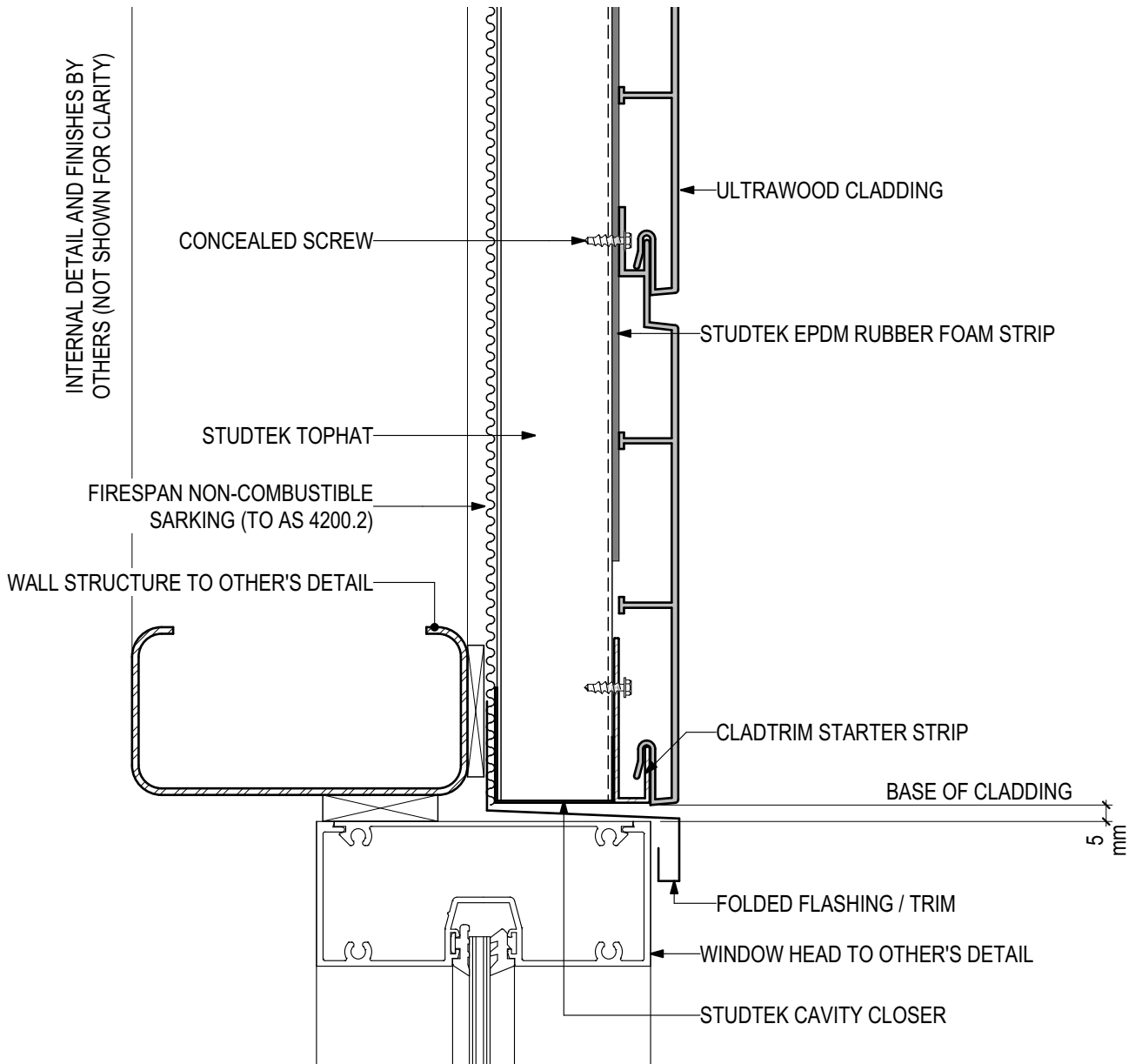
**D.05 - HEAD AT SLAB**

SCALE 1:2

Disclaimer: These details are general design details for use as a guide. Any use is at the user's own discretion and risk. All detailing and installation should be in accordance with all the relevant codes and standards as per current NCC requirements.

**Blue Chip Group Pty Ltd**  
P: 08 9451 2344  
F: 08 9451 8983  
E: sales@bluechipgroup.net.au

**ULTRAWOOD Non-combustible Timber Cladding (V1219)**  
**UW-GR-CSF Concealed Screw Fix (Horizontal Installation)**



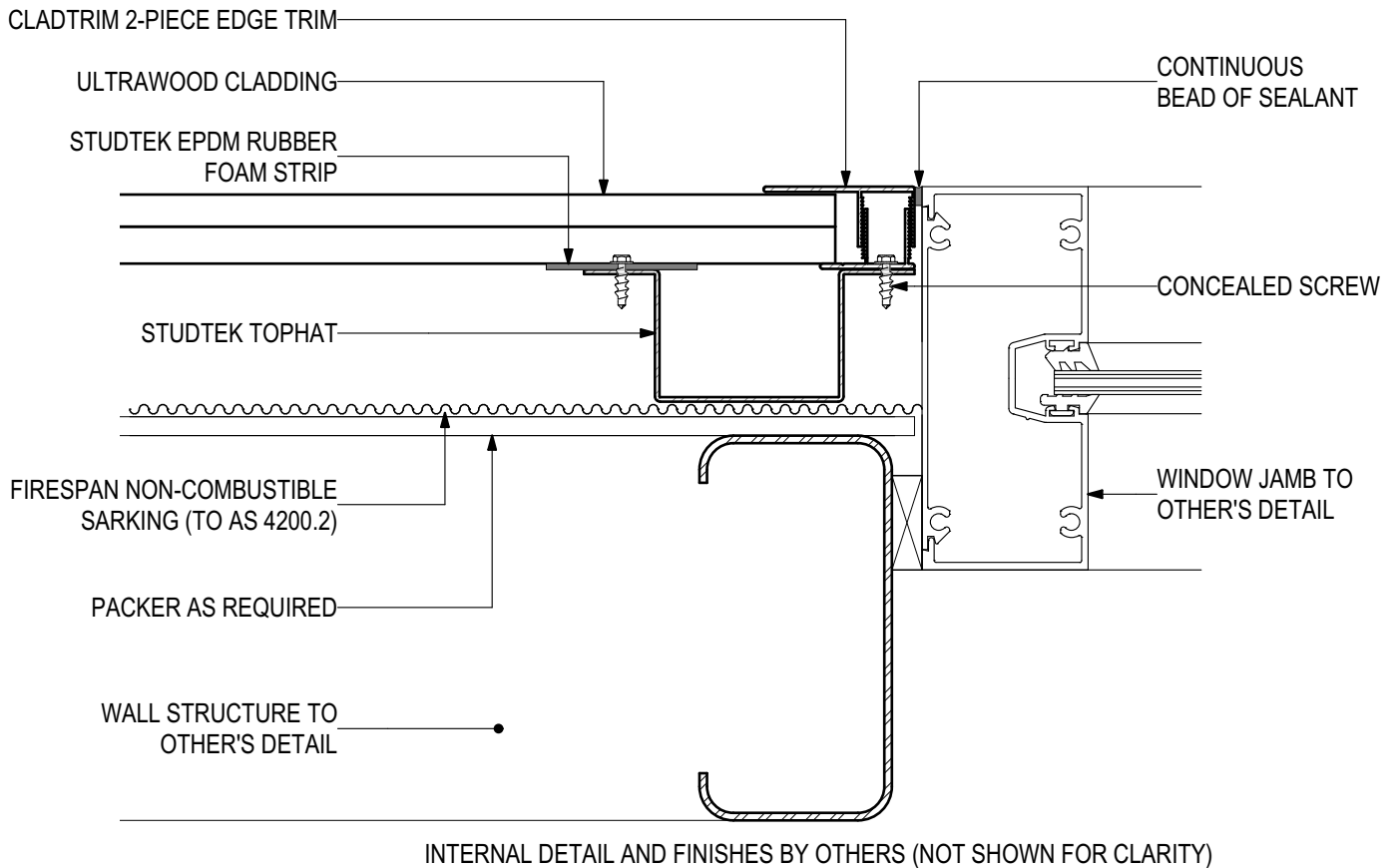
**D.06 - WINDOW HEAD**

SCALE 1:2

Disclaimer: These details are general design details for use as a guide. Any use is at the user's own discretion and risk. All detailing and installation should be in accordance with all the relevant codes and standards as per current NCC requirements.

**Blue Chip Group Pty Ltd**  
 P: 08 9451 2344  
 F: 08 9451 8983  
 E: sales@bluechipgroup.net.au

**ULTRAWOOD Non-combustible Timber Cladding (V1219)**  
**UW-GR-CSF Concealed Screw Fix (Horizontal Installation)**



**D.07 - WINDOW JAMB**

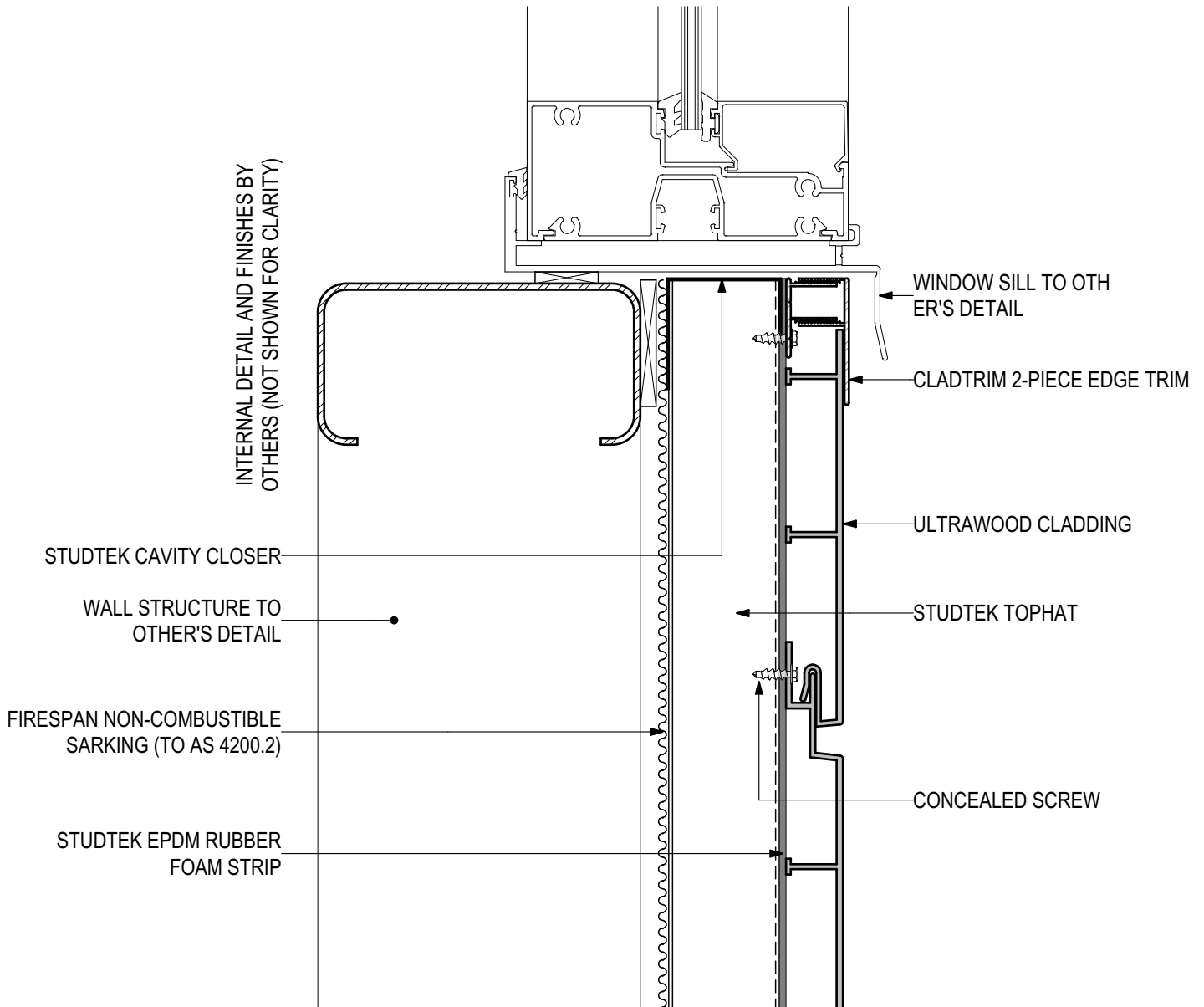
SCALE 1:2

Disclaimer: These details are general design details for use as a guide. Any use is at the user's own discretion and risk. All detailing and installation should be in accordance with all the relevant codes and standards as per current NCC requirements.

**Blue Chip Group Pty Ltd**  
P: 08 9451 2344  
F: 08 9451 8983  
E: sales@bluechipgroup.net.au



**ULTRAWOOD Non-combustible Timber Cladding (V1219)**  
**UW-GR-CSF Concealed Screw Fix (Horizontal Installation)**



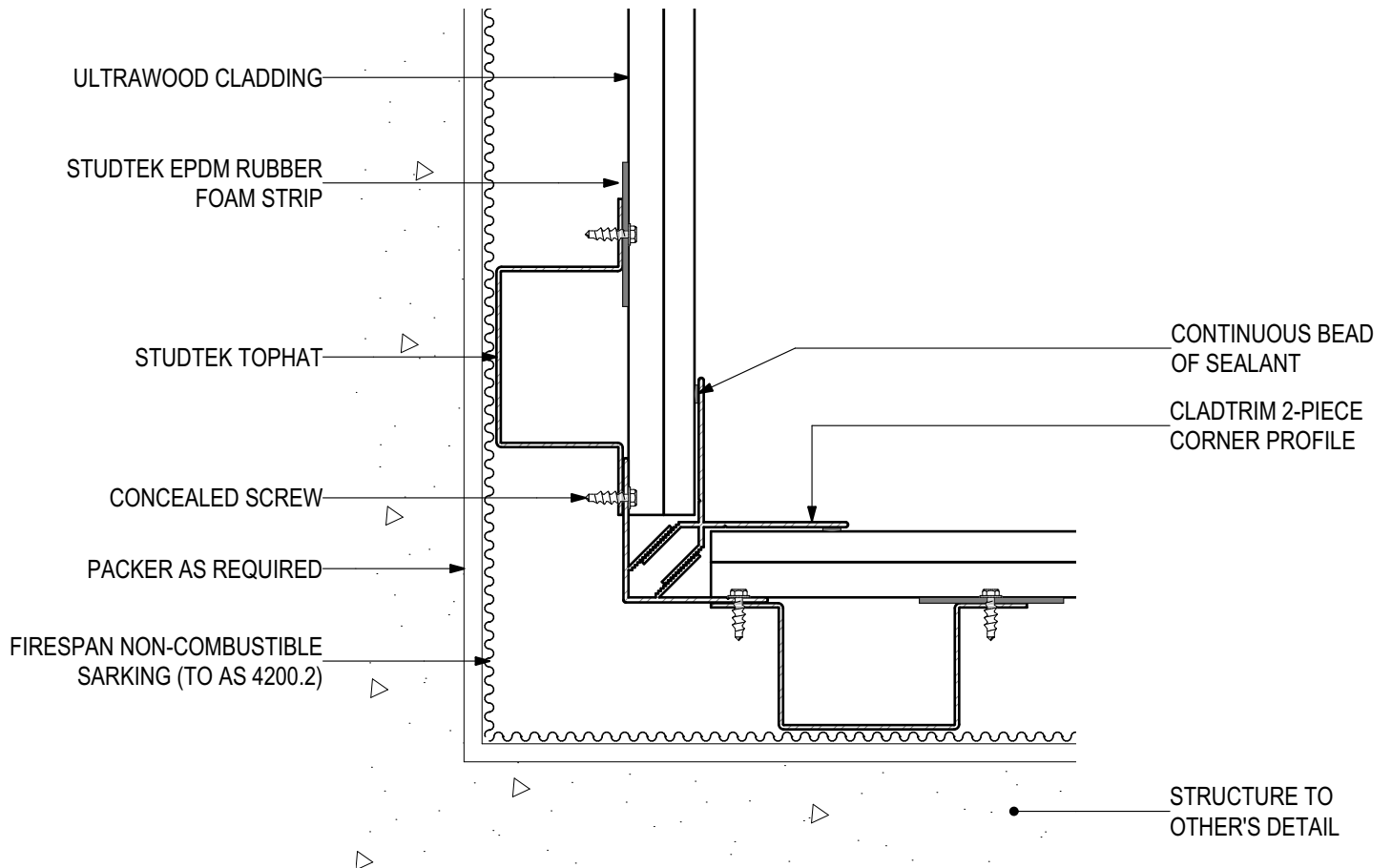
**D.08 - WINDOW SILL**

SCALE 1:2

Disclaimer: These details are general design details for use as a guide. Any use is at the user's own discretion and risk. All detailing and installation should be in accordance with all the relevant codes and standards as per current NCC requirements.

**Blue Chip Group Pty Ltd**  
P: 08 9451 2344  
F: 08 9451 8983  
E: sales@bluechipgroup.net.au

# ULTRAWOOD Non-combustible Timber Cladding (V1219) UW-GR-CSF Concealed Screw Fix (Horizontal Installation)



## D.09 - INTERNAL CORNER

SCALE 1:2

Disclaimer: These details are general design details for use as a guide. Any use is at the user's own discretion and risk. All detailing and installation should be in accordance with all the relevant codes and standards as per current NCC requirements.

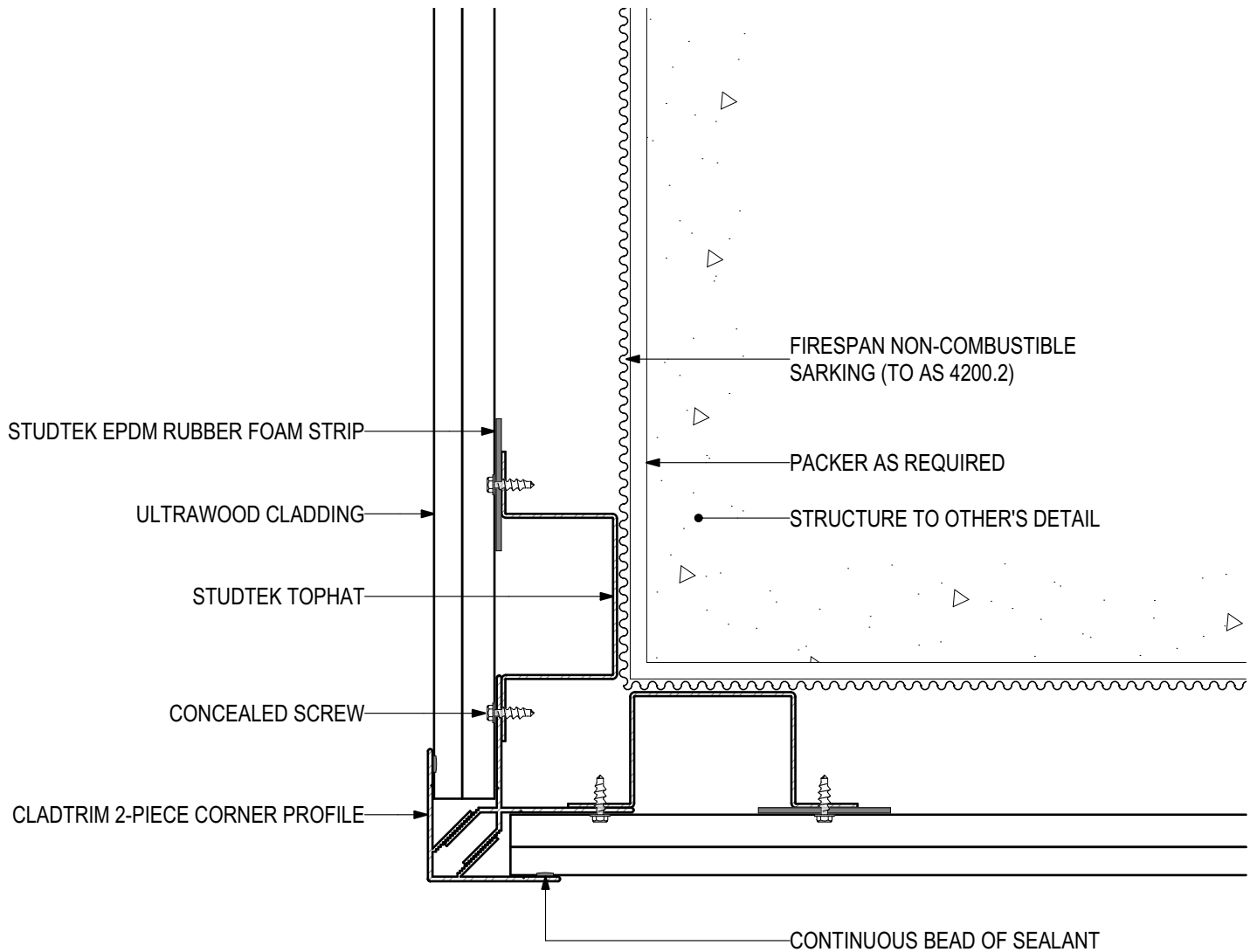
**Blue Chip Group Pty Ltd**

P: 08 9451 2344

F: 08 9451 8983

E: sales@bluechipgroup.net.au

# ULTRAWOOD Non-combustible Timber Cladding (V1219) UW-GR-CSF Concealed Screw Fix (Horizontal Installation)



## D.10 - EXTERNAL CORNER

SCALE 1:2

Disclaimer: These details are general design details for use as a guide. Any use is at the user's own discretion and risk. All detailing and installation should be in accordance with all the relevant codes and standards as per current NCC requirements.

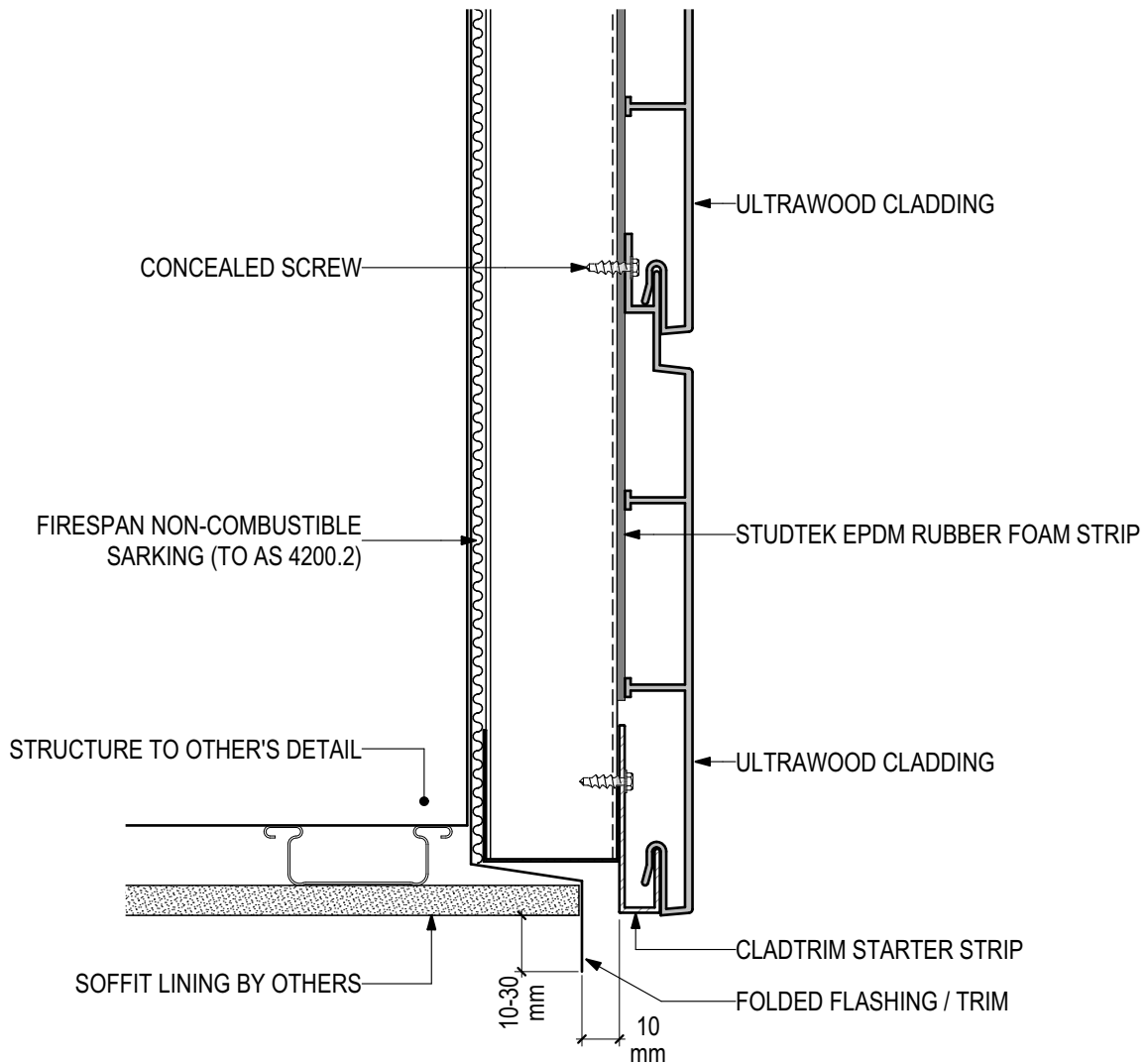
**Blue Chip Group Pty Ltd**

P: 08 9451 2344

F: 08 9451 8983

E: sales@bluechipgroup.net.au

**ULTRAWOOD Non-combustible Timber Cladding (V1219)**  
**UW-GR-CSF Concealed Screw Fix (Horizontal Installation)**



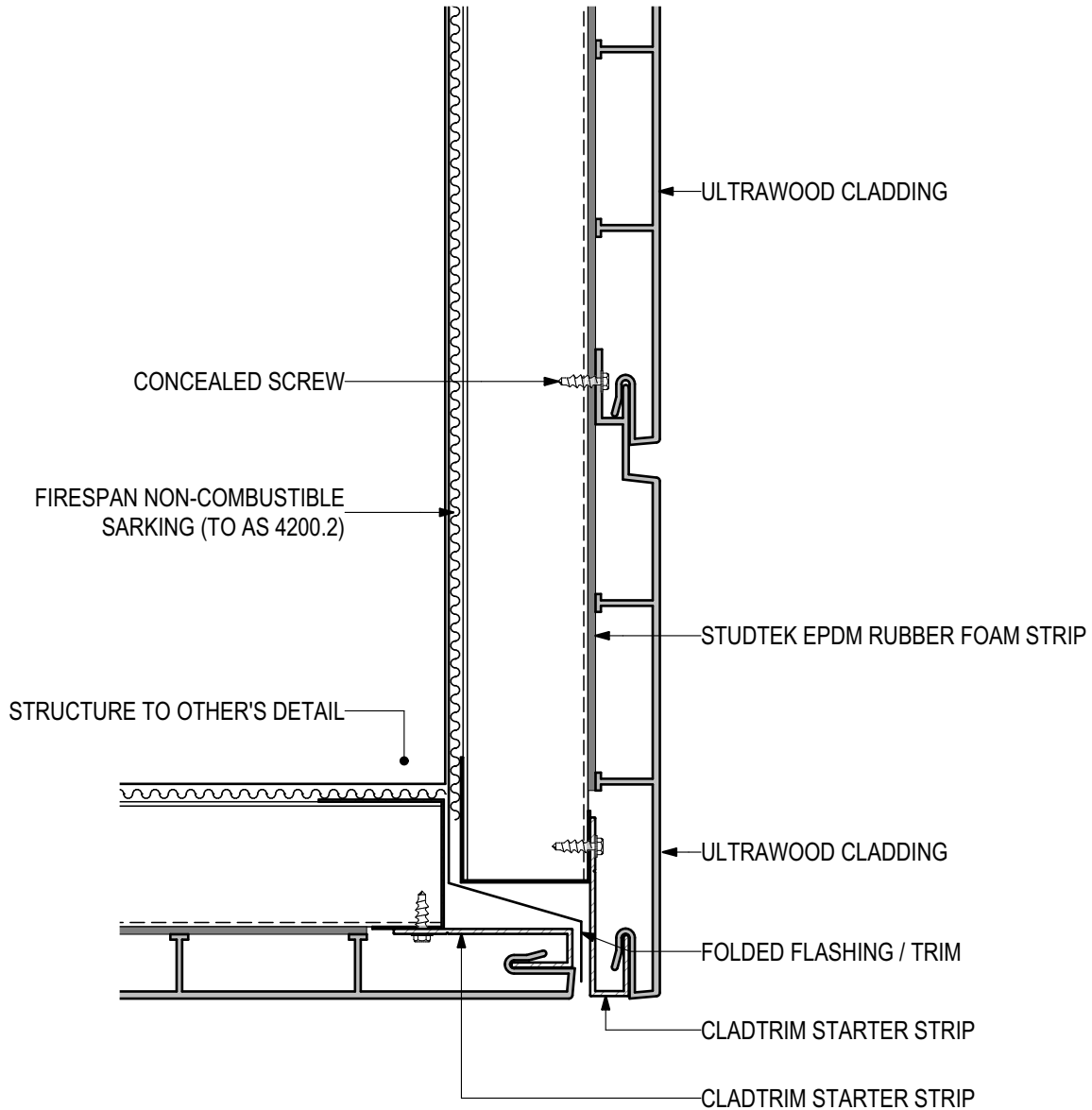
**D.11 - EAVE JUNCTION**

SCALE 1:2

Disclaimer: These details are general design details for use as a guide. Any use is at the user's own discretion and risk. All detailing and installation should be in accordance with all the relevant codes and standards as per current NCC requirements.

**Blue Chip Group Pty Ltd**  
P: 08 9451 2344  
F: 08 9451 8983  
E: sales@bluechipgroup.net.au

# ULTRAWOOD Non-combustible Timber Cladding (V1219) UW-GR-CSF Concealed Screw Fix (Horizontal Installation)



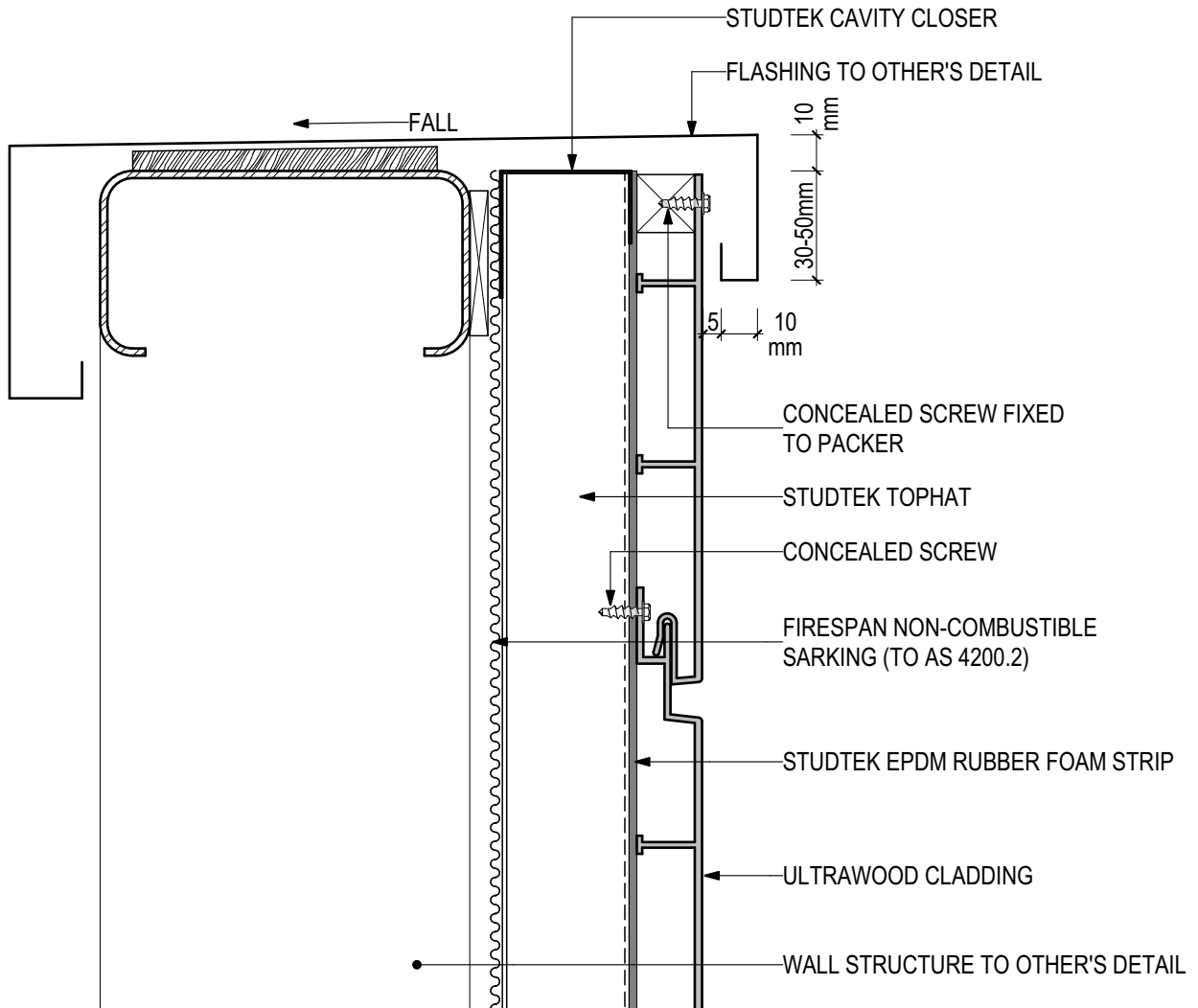
## D.12 - CLADDING RETURN DETAIL

SCALE 1:2

Disclaimer: These details are general design details for use as a guide. Any use is at the user's own discretion and risk. All detailing and installation should be in accordance with all the relevant codes and standards as per current NCC requirements.

**Blue Chip Group Pty Ltd**  
P: 08 9451 2344  
F: 08 9451 8983  
E: sales@bluechipgroup.net.au

**ULTRAWOOD Non-combustible Timber Cladding (V1219)**  
**UW-GR-CSF Concealed Screw Fix (Horizontal Installation)**



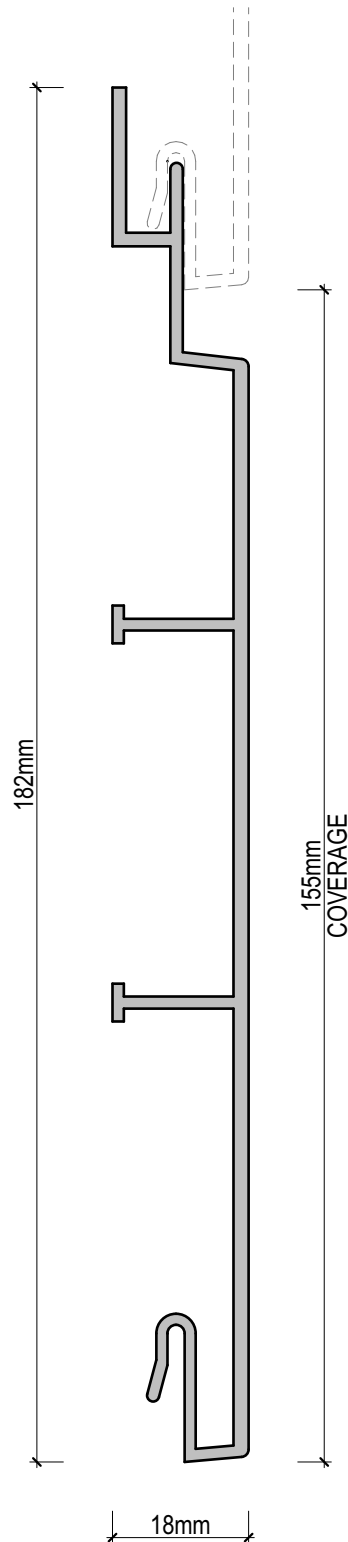
**D.13 - PARAPET DETAIL**

SCALE 1:2

Disclaimer: These details are general design details for use as a guide. Any use is at the user's own discretion and risk. All detailing and installation should be in accordance with all the relevant codes and standards as per current NCC requirements.

**Blue Chip Group Pty Ltd**  
P: 08 9451 2344  
F: 08 9451 8983  
E: sales@bluechipgroup.net.au

**ULTRAWOOD Non-combustible Timber Cladding (V1219)**  
**UW-GR-CSF Concealed Screw Fix (Horizontal Installation)**



**ULTRAWOOD - ULTRAWOOD PROFILE (UWG155)**

SCALE 1:1

Disclaimer: These details are general design details for use as a guide. Any use is at the user's own discretion and risk. All detailing and installation should be in accordance with all the relevant codes and standards as per current NCC requirements.

**Blue Chip Group Pty Ltd**  
P: 08 9451 2344  
F: 08 9451 8983  
E: [sales@bluechipgroup.net.au](mailto:sales@bluechipgroup.net.au)