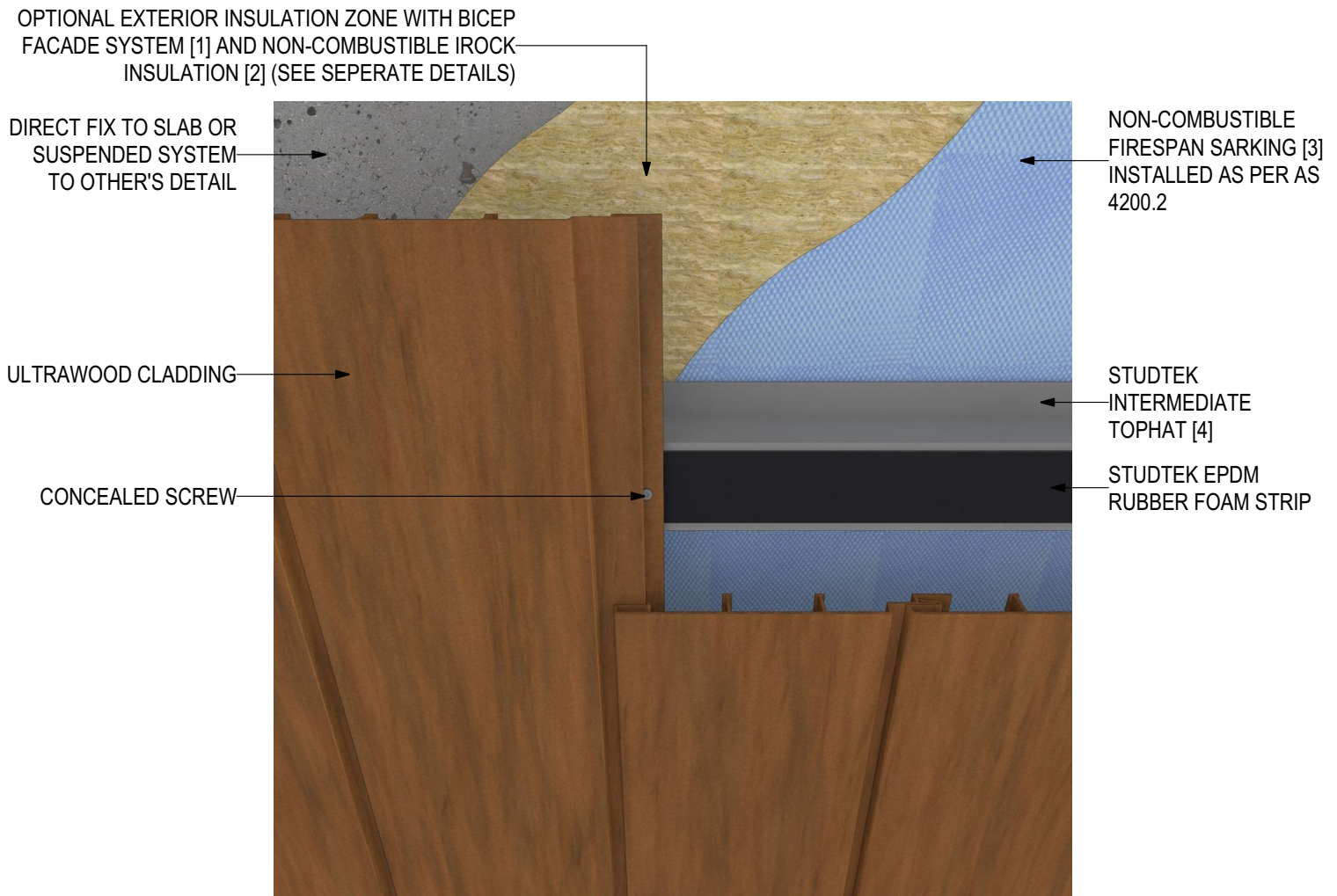




INSTALLATION DETAILS

ULTRAWOOD Soffit Installation (V0323)



SYSTEM COMPONENTS

BICEP FACADE
SYSTEM [1]



IROCK
INSULATION [2]



FIRESpan
SARKING [3]



STUDTEK
TOPHAT [4]



CLADTRIM
TRIMS [5]



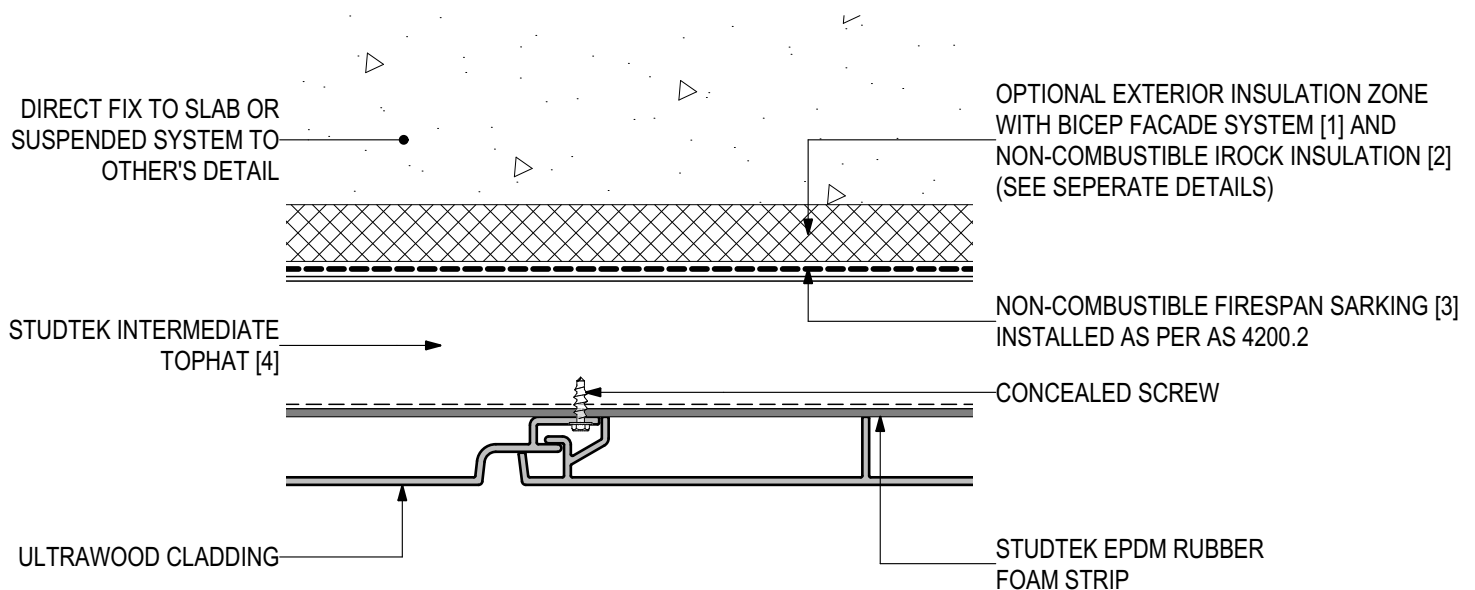
PROLASTIK
SEALANT [6]





D.01 - TYPICAL DETAIL - END VIEW (SCALE 1:2)

ULTRAWOOD Soffit Installation (V0323)



SYSTEM COMPONENTS

BICEP FACADE
SYSTEM [1]



IROCK
INSULATION [2]



FIRESpan
SARKING [3]



STUDTEK
TOPHAT [4]



CLADTRIM
TRIMS [5]



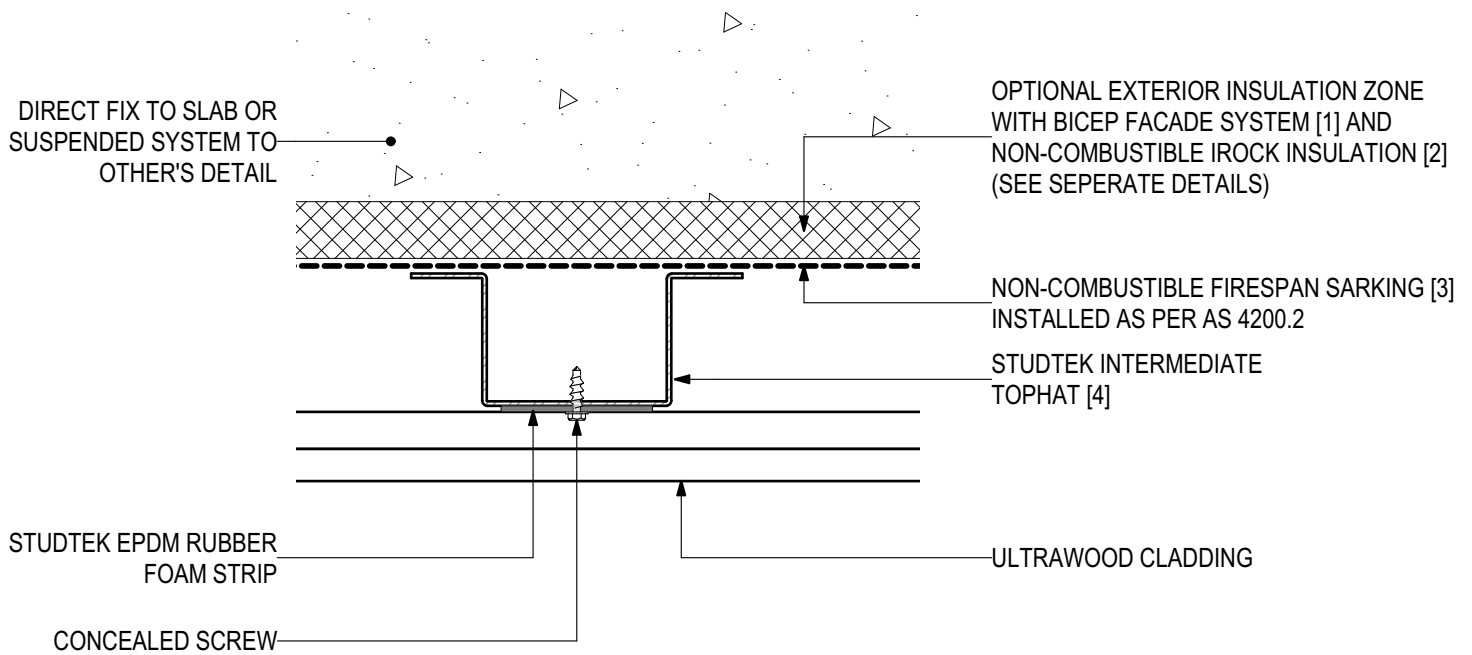
PROLASTIK
SEALANT [6]





D.02 - TYPICAL DETAIL - SIDE VIEW (SCALE 1:2)

ULTRAWOOD Soffit Installation (V0323)



SYSTEM COMPONENTS

BICEP FACADE
SYSTEM [1]



IROCK
INSULATION [2]



FIRESpan
SARKING [3]



STUDTEK
TOPHAT [4]



CLADTRIM
TRIMS [5]



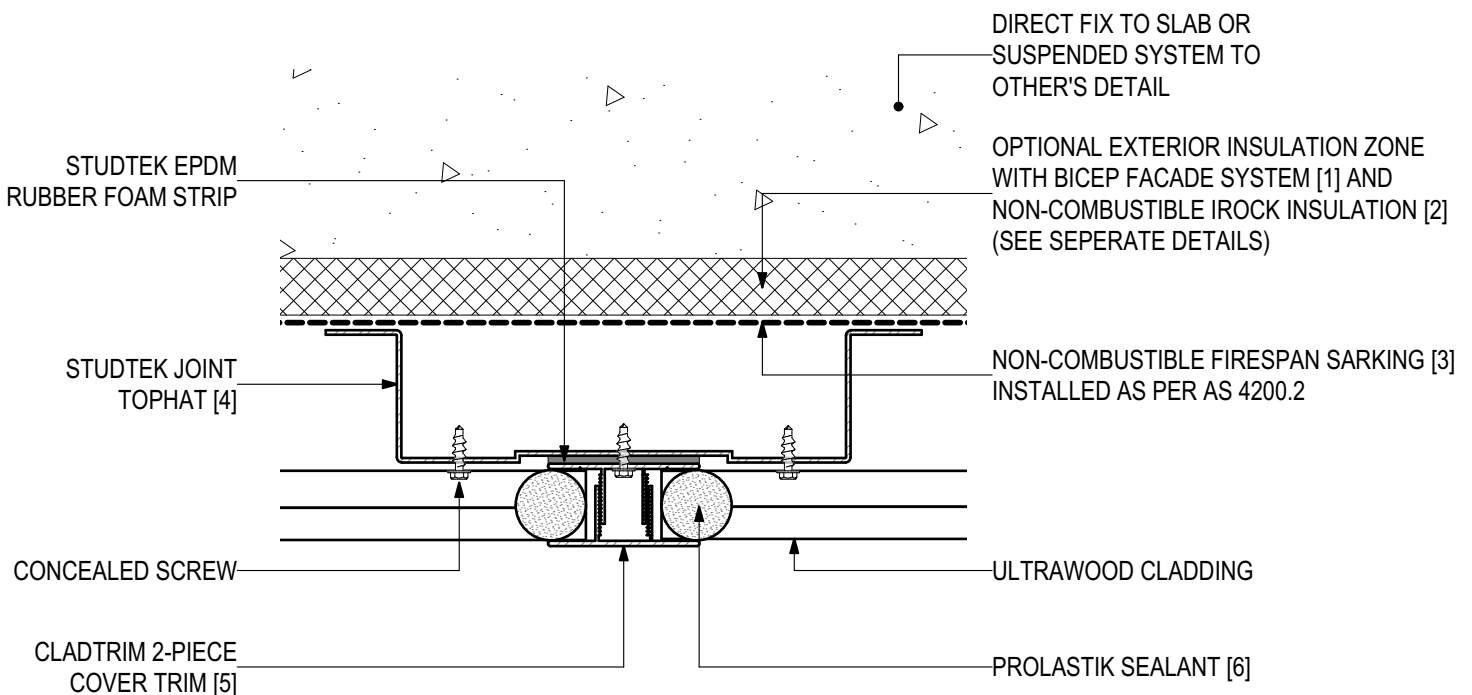
PROLASTIK
SEALANT [6]





D.03 - BUTT JOINT DETAIL WITH COVERSTRIP (SCALE 1:2)

ULTRAWOOD Soffit Installation (V0323)



SYSTEM COMPONENTS

BICEP FACADE
SYSTEM [1]



IROCK
INSULATION [2]



FIRESPAN
SARKING [3]



STUDTEK
TOPHAT [4]



CLADTRIM
TRIMS [5]



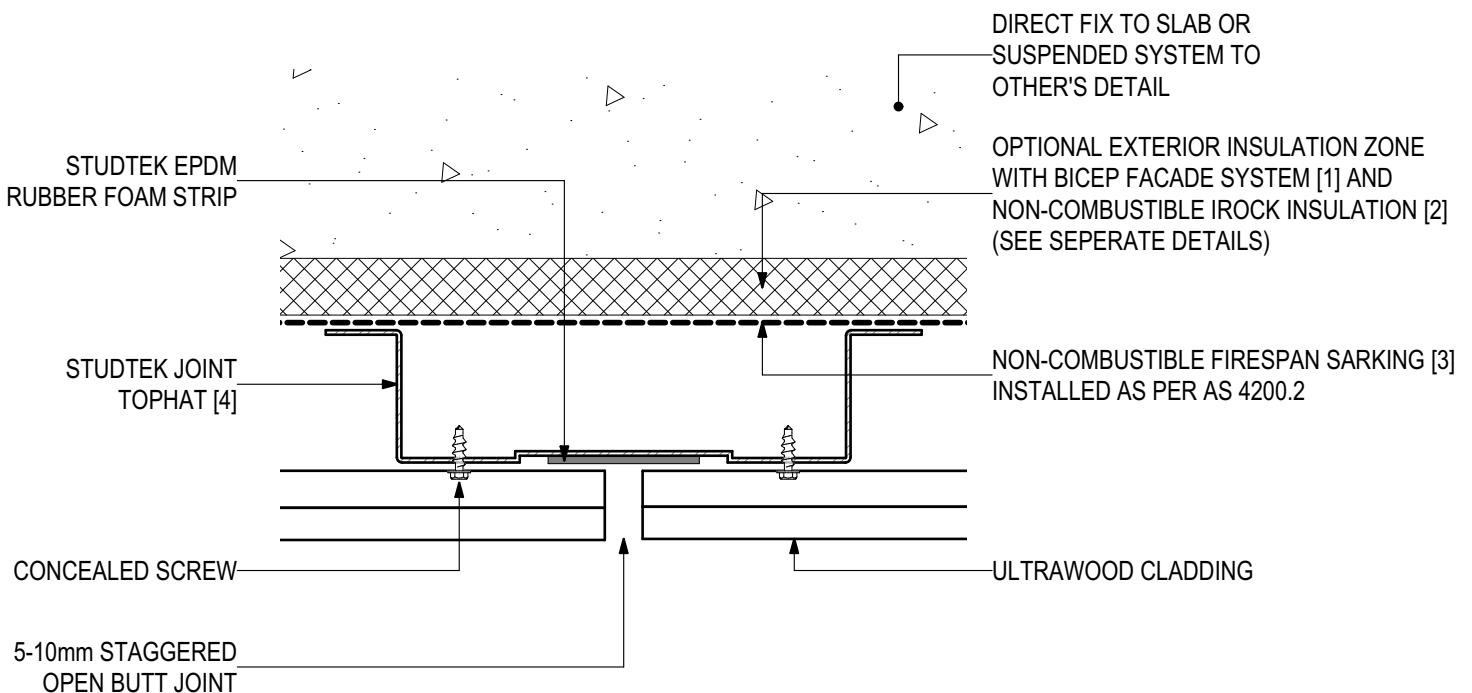
PROLASTIK
SEALANT [6]





D.04 - OPEN BUTT JOINT DETAIL (SCALE 1:2)

ULTRAWOOD Soffit Installation (V0323)



SYSTEM COMPONENTS

BICEP FACADE
SYSTEM [1]



IROCK
INSULATION [2]



FIRESPAN
SARKING [3]



STUDTEK
TOPHAT [4]



CLADTRIM
TRIMS [5]



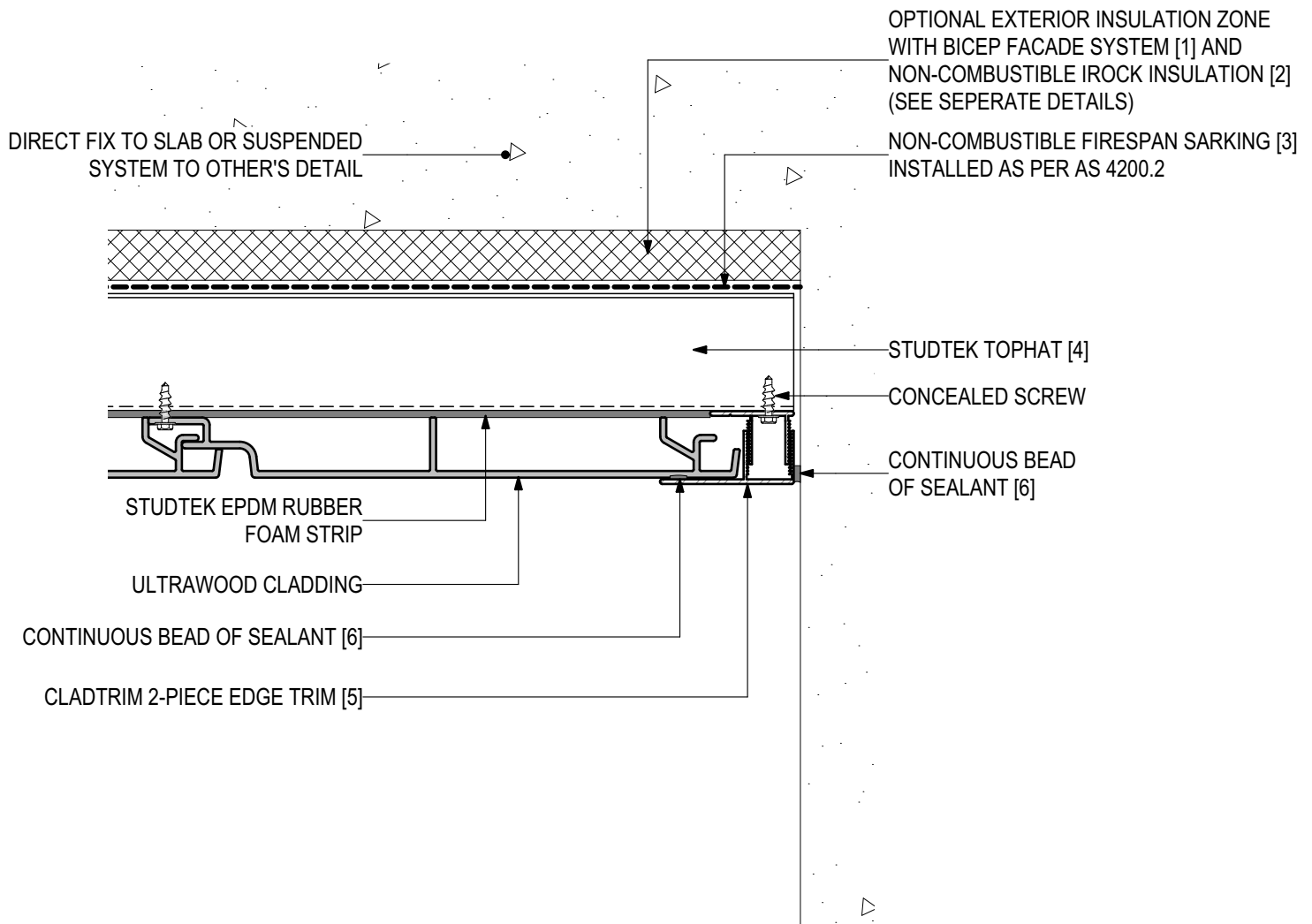
PROLASTIK
SEALANT [6]





D.05 - FLUSH EDGE DETAIL - END VIEW (SCALE 1:2)

ULTRAWOOD Soffit Installation (V0323)



SYSTEM COMPONENTS

BICEP FACADE
SYSTEM [1]



IROCK
INSULATION [2]



FIRESpan
SARKING [3]



STUDTEK
TOPHAT [4]



CLADTRIM
TRIMS [5]



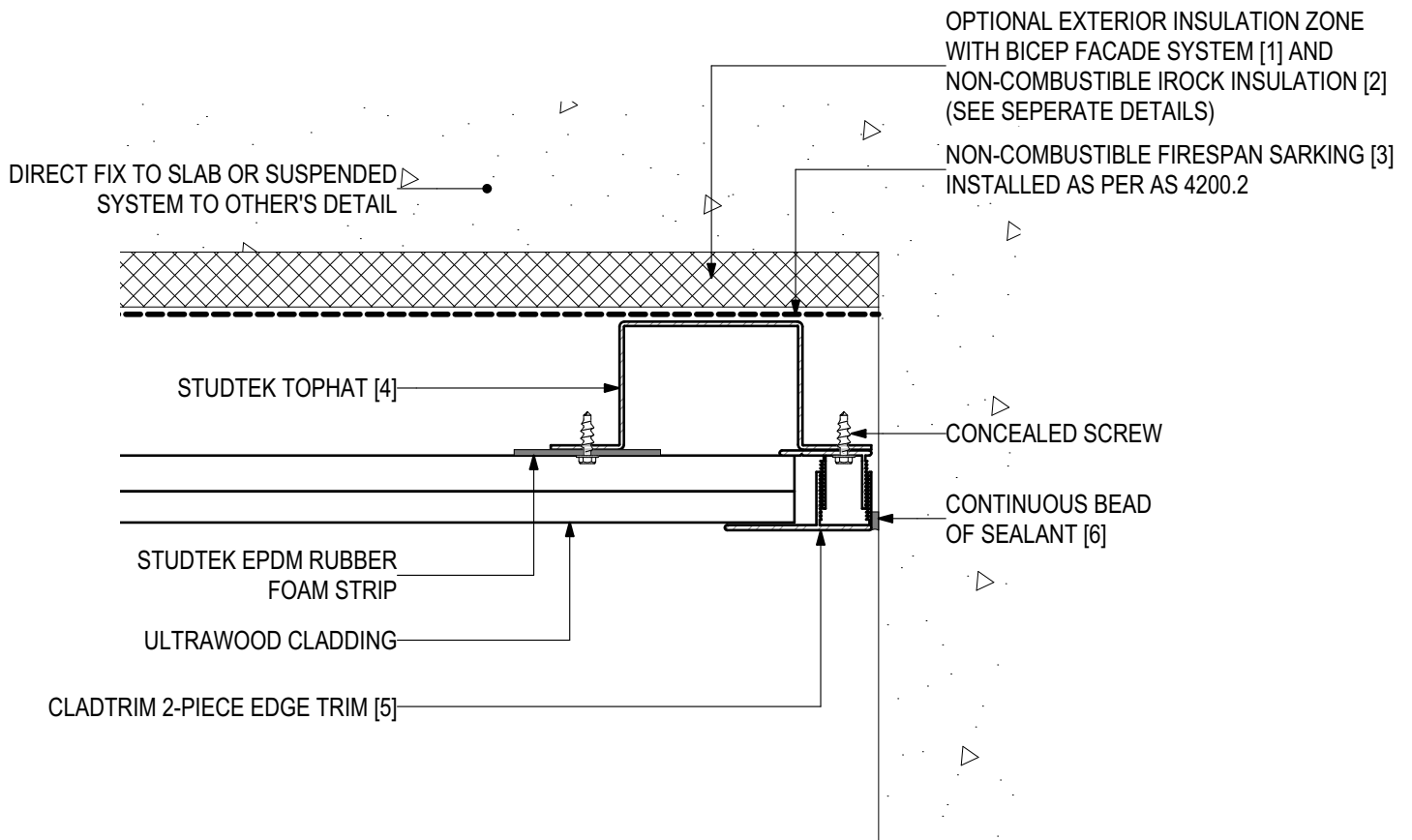
PROLASTIK
SEALANT [6]





D.06 - FLUSH EDGE DETAIL - SIDE VIEW (SCALE 1:2)

ULTRAWOOD Soffit Installation (V0323)



SYSTEM COMPONENTS

BICEP FACADE
SYSTEM [1]



IROCK
INSULATION [2]



FIRESpan
SARKING [3]



STUDTEK
TOPHAT [4]



CLADTRIM
TRIMS [5]



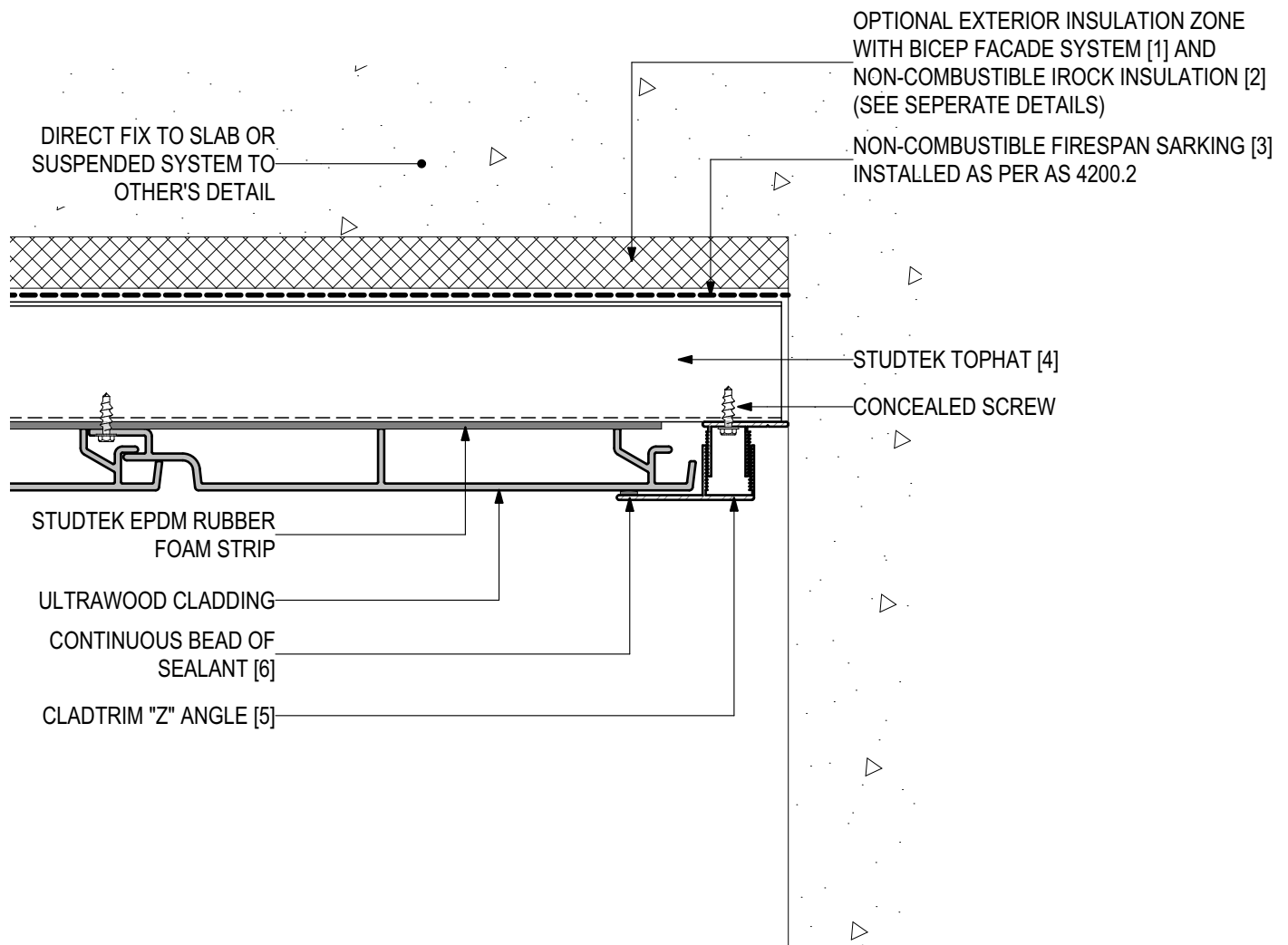
PROLASTIK
SEALANT [6]





D.07 - NEGATIVE EDGE DETAIL - END VIEW (SCALE 1:2)

ULTRAWOOD Soffit Installation (V0323)



SYSTEM COMPONENTS

BICEP FACADE
SYSTEM [1]



IROCK
INSULATION [2]



FIRESpan
SARKING [3]



STUDTEK
TOPHAT [4]



CLADTRIM
TRIMS [5]



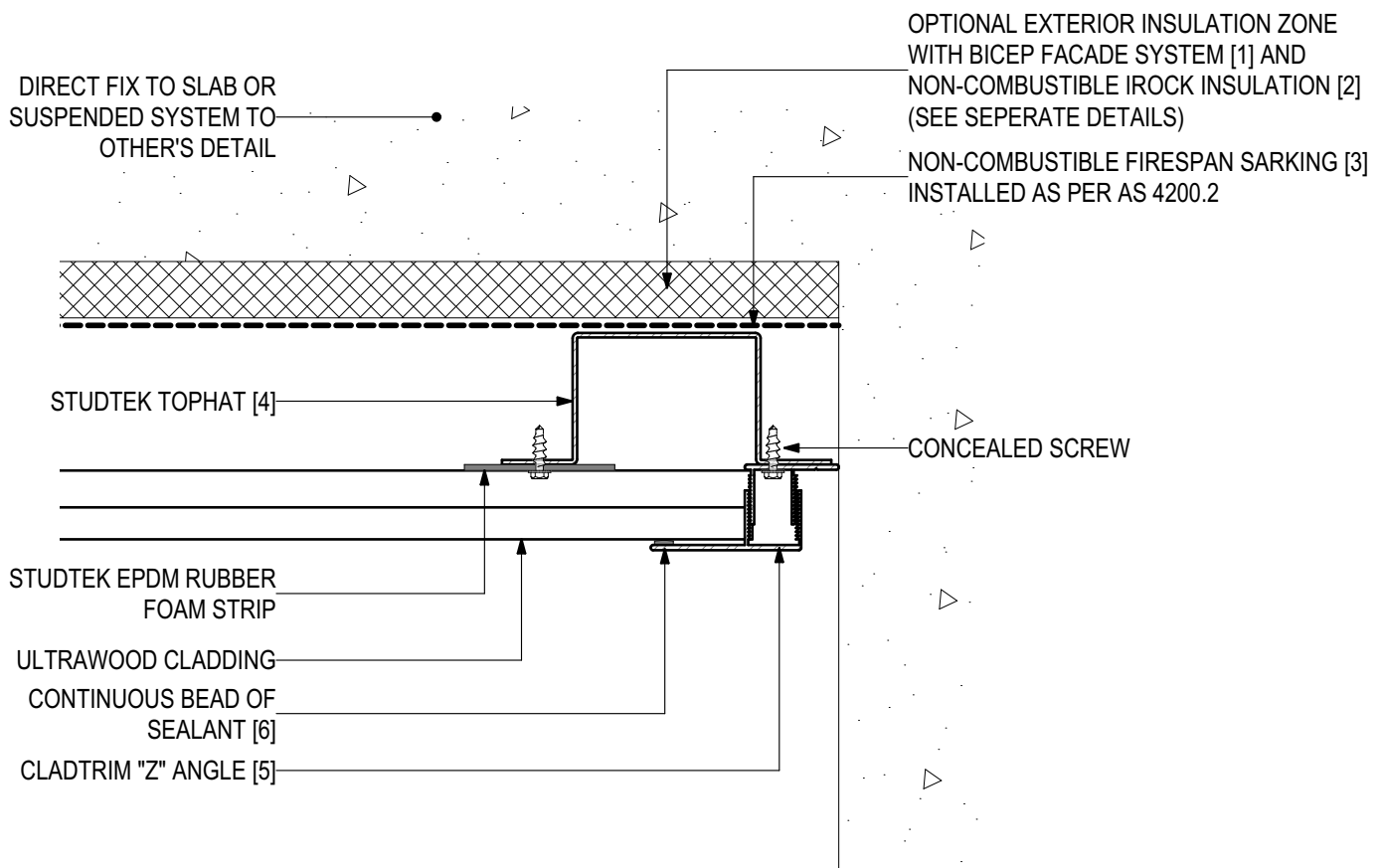
PROLASTIK
SEALANT [6]





D.08 - NEGATIVE EDGE DETAIL - SIDE VIEW (SCALE 1:2)

ULTRAWOOD Soffit Installation (V0323)



SYSTEM COMPONENTS

BICEP FACADE
SYSTEM [1]



IROCK
INSULATION [2]



FIRESpan
SARKING [3]



STUDTEK
TOPHAT [4]



CLADTRIM
TRIMS [5]



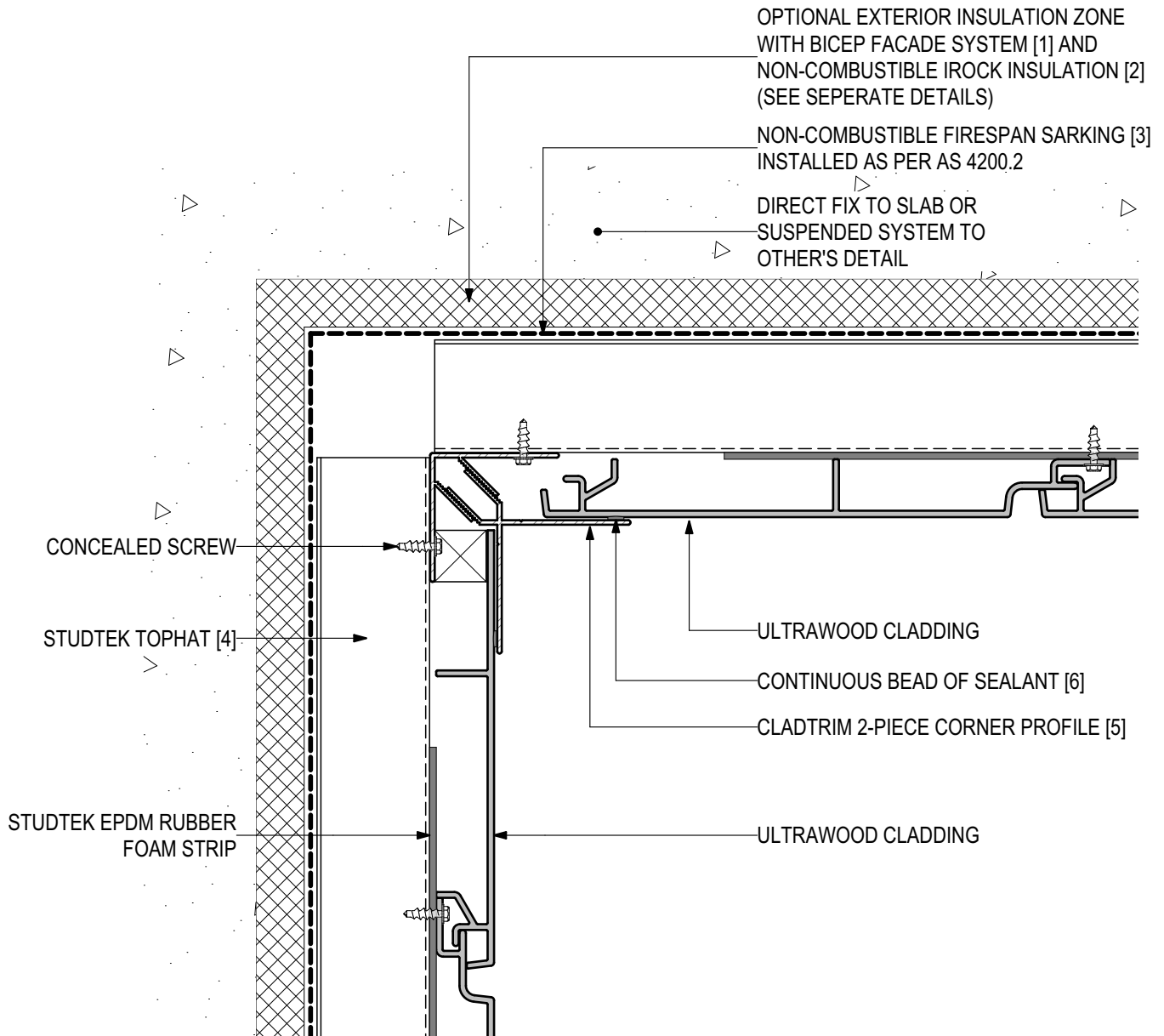
PROLASTIK
SEALANT [6]





D.09 - SOFFIT TO WALL DETAIL - END VIEW (SCALE 1:2)

ULTRAWOOD Soffit Installation (V0323)



SYSTEM COMPONENTS

BICEP FACADE SYSTEM [1]



IROCK INSULATION [2]



FIRESPAN SARKING [3]



STUDTEK TOPHAT [4]



CLADTRIM TRIMS [5]



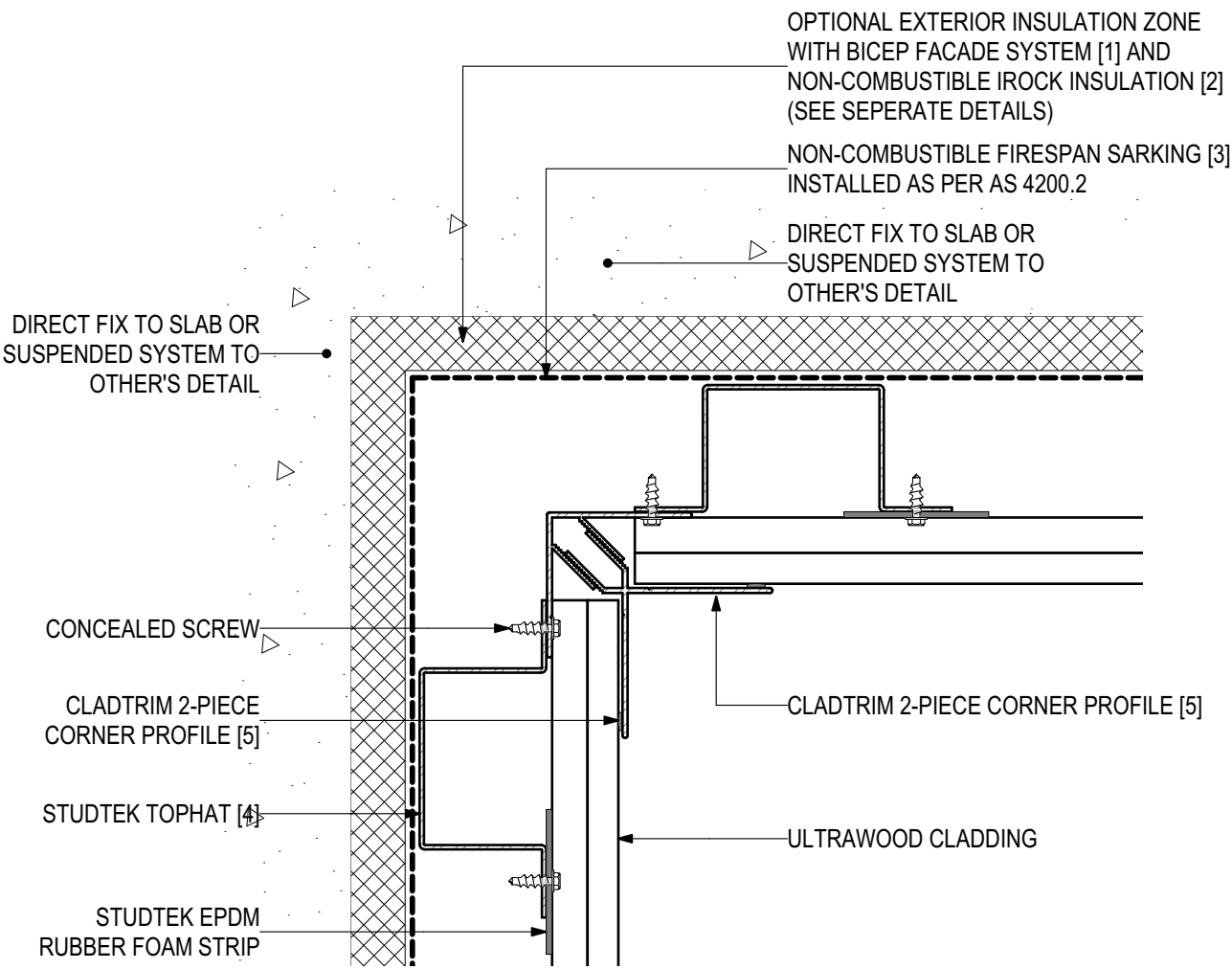
PROLASTIK SEALANT [6]





D.10 - SOFFIT TO WALL DETAIL - SIDE VIEW (SCALE 1:2)

ULTRAWOOD Soffit Installation (V0323)



SYSTEM COMPONENTS

BICEP FACADE SYSTEM [1]



IROCK INSULATION [2]



FIRESPAN SARKING [3]



STUDTEK TOPHAT [4]



CLADTRIM TRIMS [5]



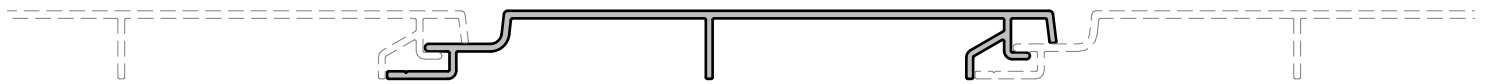
PROLASTIK SEALANT [6]



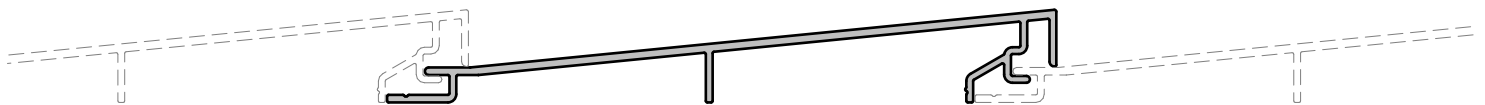


ULTRAWOOD PROFILE (SCALE 1:2)

ULTRAWOOD Soffit Installation (V0323)



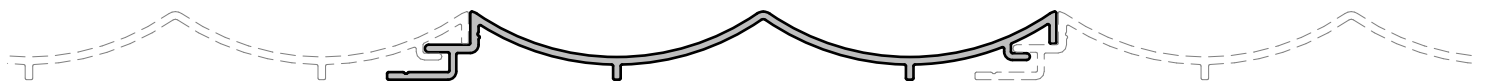
ULTRAWOOD 155x18mm GROOVE PROFILE



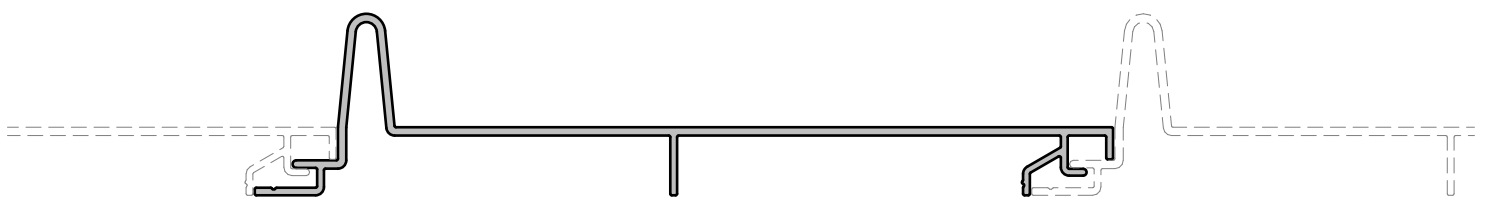
ULTRAWOOD 155x25mm CABIN PROFILE



ULTRAWOOD 155x18mm CONCAVE PROFILE



ULTRAWOOD 155x18mm DUOCAVE PROFILE



ULTRAWOOD 205x48mm SEAM PROFILE

SYSTEM COMPONENTS

BICEP FACADE
SYSTEM [1]



IROCK
INSULATION [2]



FIRESPAN
SARKING [3]



STUDEK
TOPHAT [4]



CLADTRIM
TRIMS [5]



PROLASTIK
SEALANT [6]

