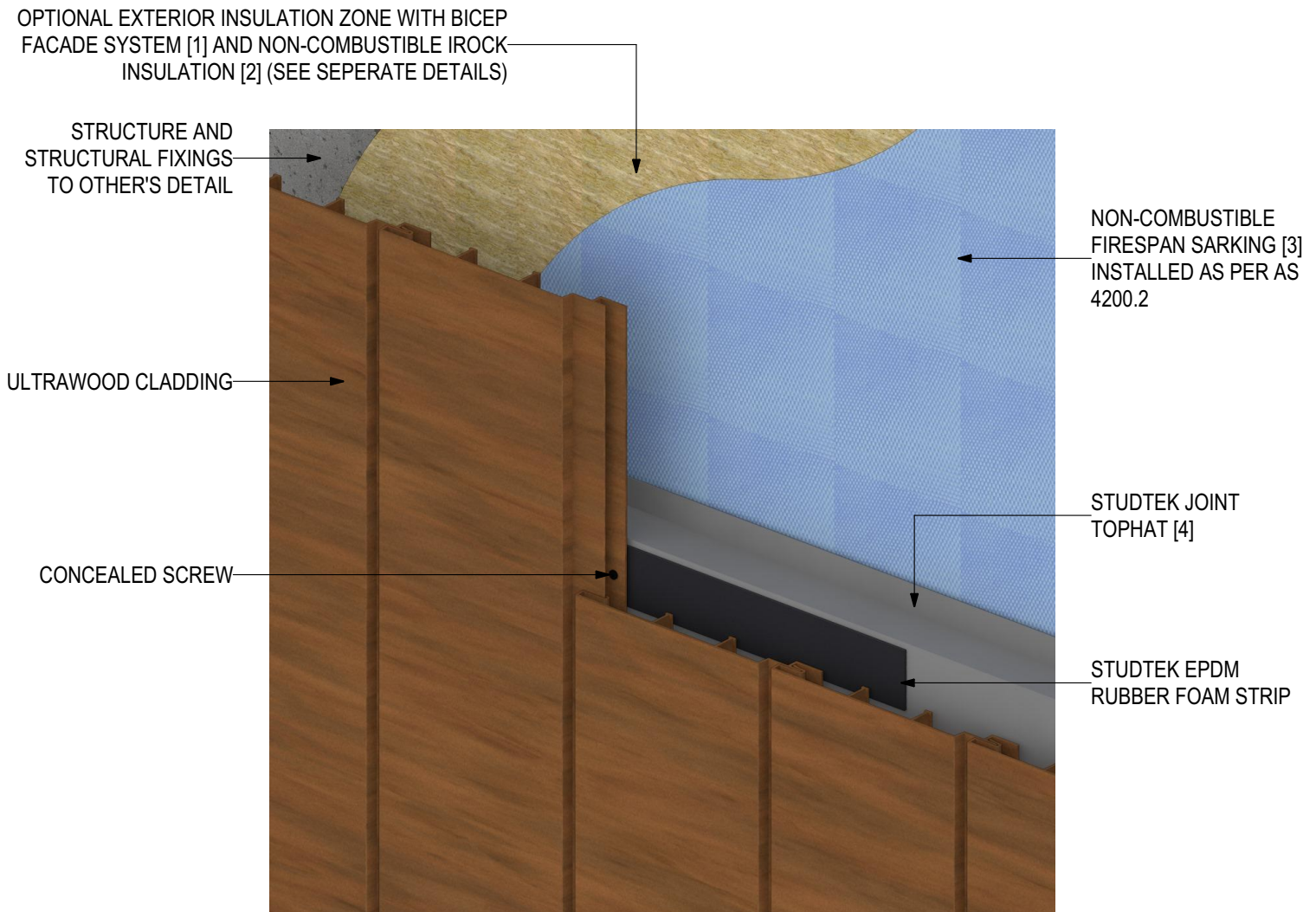




## INSTALLATION DETAILS

### ULTRAWOOD Vertical Cladding Installation (V1123)



## SYSTEM COMPONENTS

BICEP FACADE  
SYSTEM [1]



IROCK  
INSULATION [2]



FIRESpan  
SARKING [3]



STUDTEK  
TOPHAT [4]



CLADTRIM  
TRIMS [5]



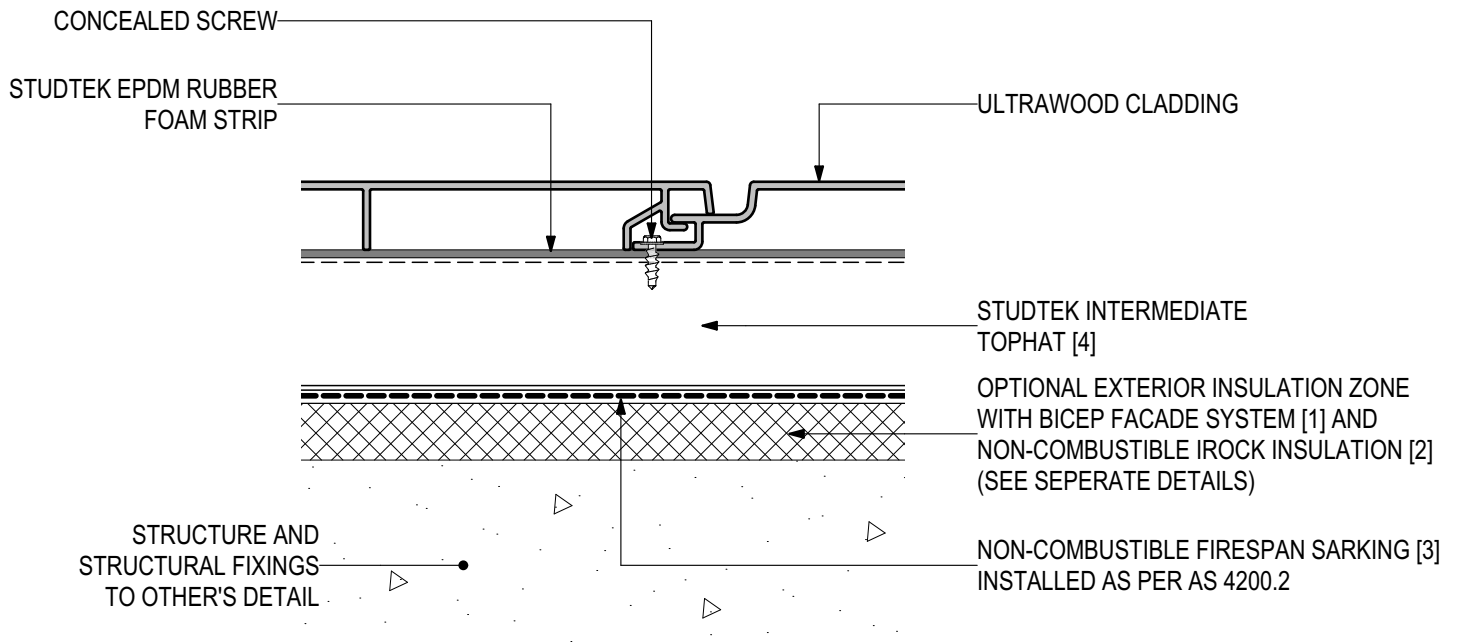
PROLASTIK  
SEALANT [6]





## D.01 - TYPICAL FIXING DETAILS (SCALE 1:2)

### ULTRAWOOD Vertical Cladding Installation (V1123)



## SYSTEM COMPONENTS

BICEP FACADE  
SYSTEM [1]



IROCK  
INSULATION [2]



FIRESpan  
SARKING [3]



STUDTEK  
TOPHAT [4]



CLADTRIM  
TRIMS [5]



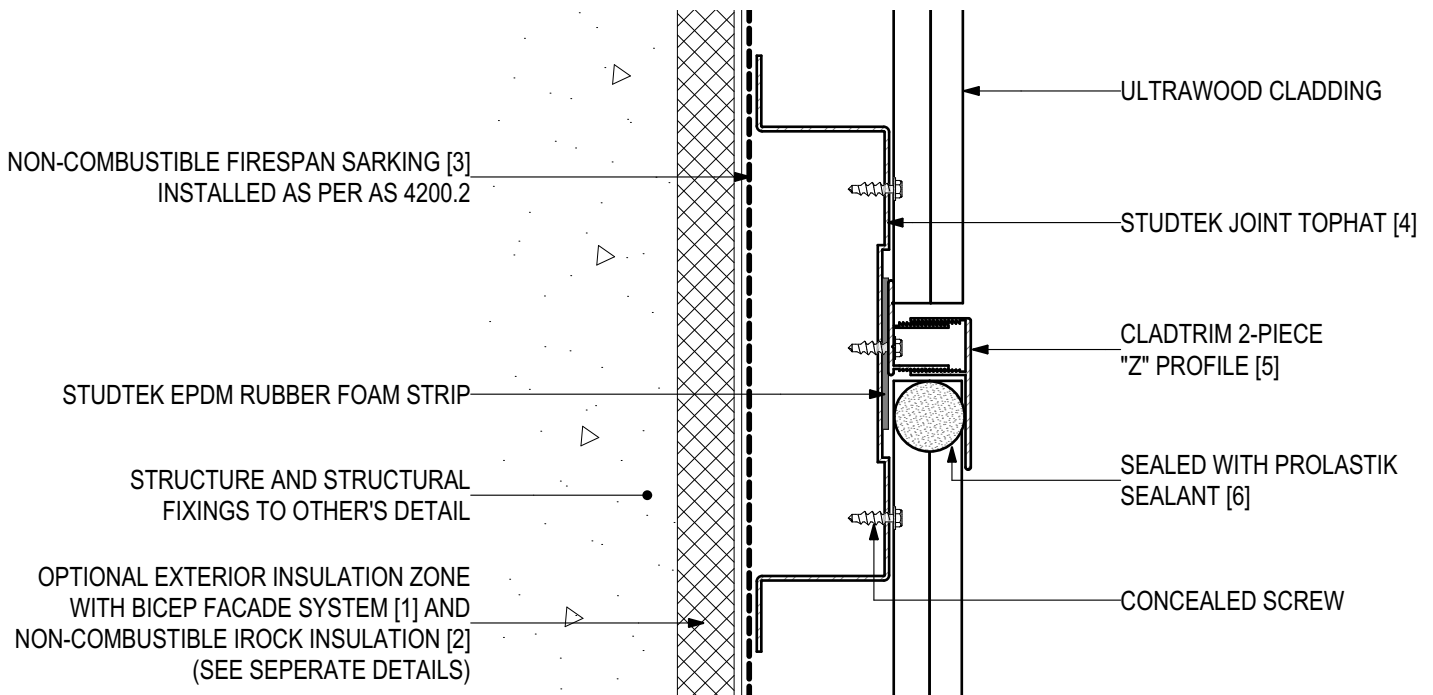
PROLASTIK  
SEALANT [6]





## D.02 - JOINT DETAIL (SCALE 1:2)

### ULTRAWOOD Vertical Cladding Installation (V1123)



## SYSTEM COMPONENTS

BICEP FACADE  
SYSTEM [1]



IROCK  
INSULATION [2]



FIRESPAN  
SARKING [3]



STUDTEK  
TOPHAT [4]



CLADTRIM  
TRIMS [5]



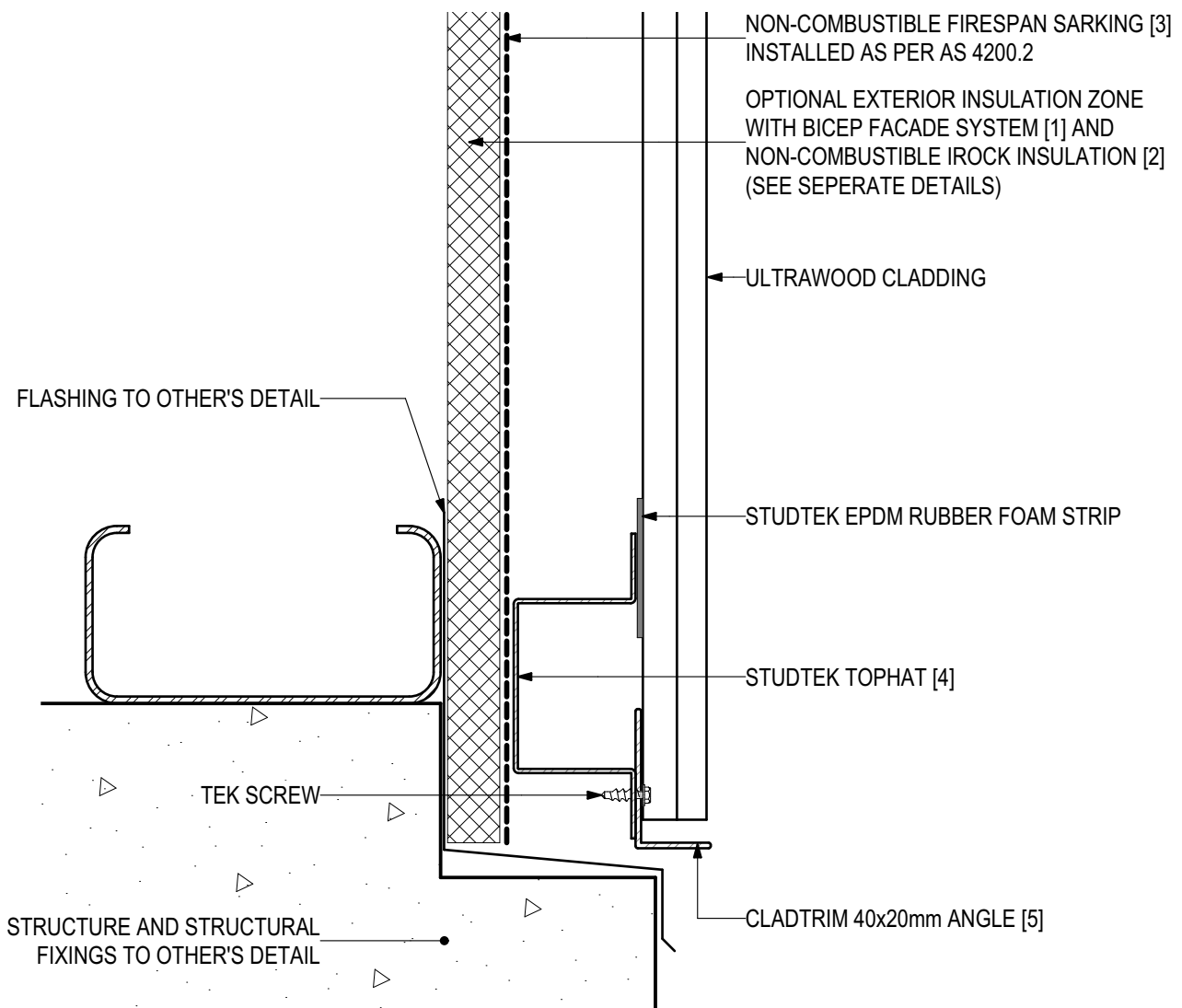
PROLASTIK  
SEALANT [6]





## D.03 - BASE DETAIL (SCALE 1:2)

### ULTRAWOOD Vertical Cladding Installation (V1123)



## SYSTEM COMPONENTS

BICEP FACADE  
SYSTEM [1]



IROCK  
INSULATION [2]



FIRESpan  
SARKING [3]



STUDTEK  
TOPHAT [4]



CLADTRIM  
TRIMS [5]



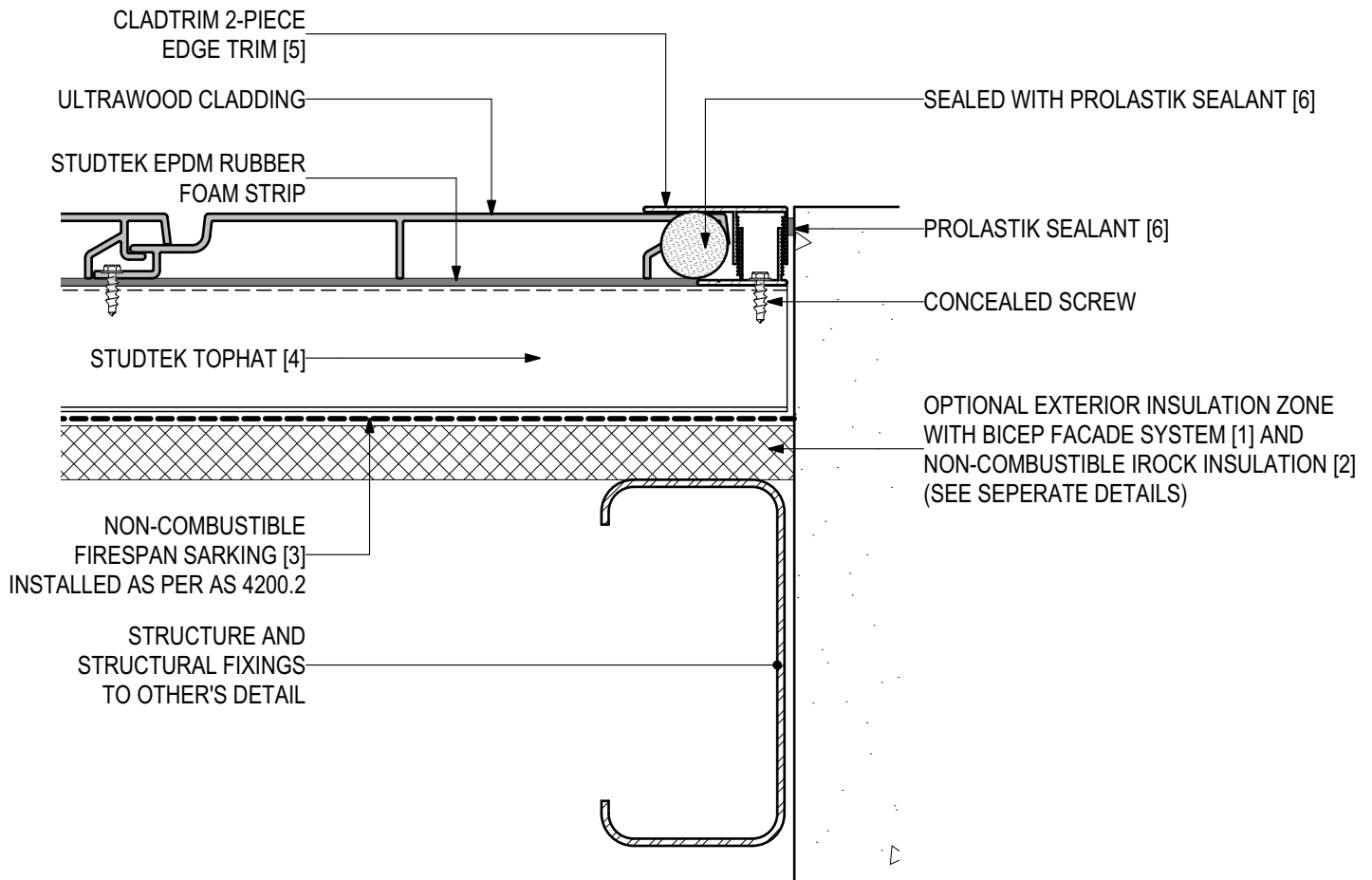
PROLASTIK  
SEALANT [6]





## D.04 - WALL ABUTMENT (SCALE 1:2)

### ULTRAWOOD Vertical Cladding Installation (V1123)



## SYSTEM COMPONENTS

BICEP FACADE  
SYSTEM [1]



IROCK  
INSULATION [2]



FIRESpan  
SARKING [3]



STUDTEK  
TOPHAT [4]



CLADTRIM  
TRIMS [5]



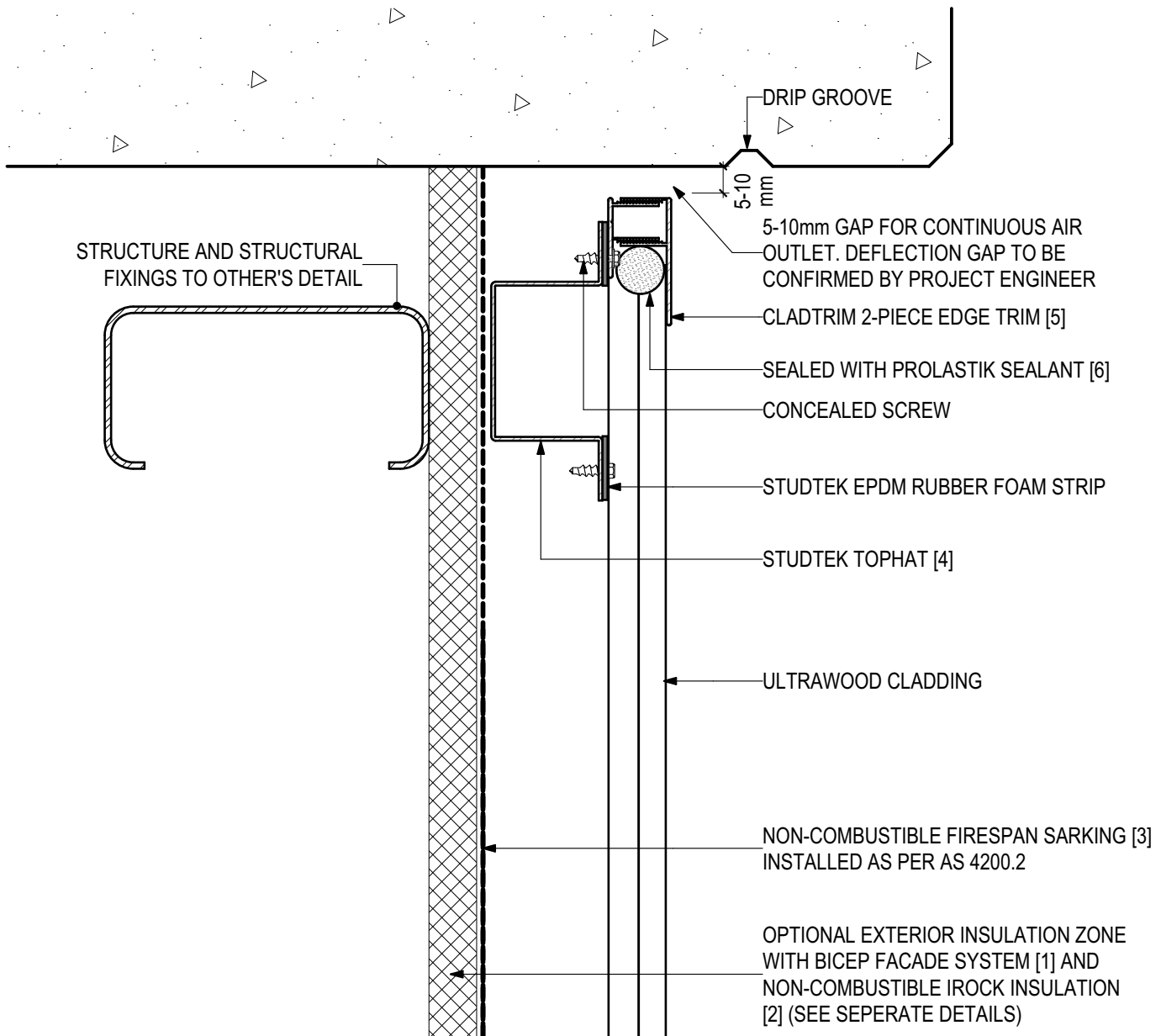
PROLASTIK  
SEALANT [6]





## D.05 - HEAD AT SLAB (SCALE 1:2)

### ULTRAWOOD Vertical Cladding Installation (V1123)



## SYSTEM COMPONENTS

BICEP FACADE  
SYSTEM [1]



IROCK  
INSULATION [2]



FIRESpan  
SARKING [3]



STUDTEK  
TOPHAT [4]



CLADTRIM  
TRIMS [5]



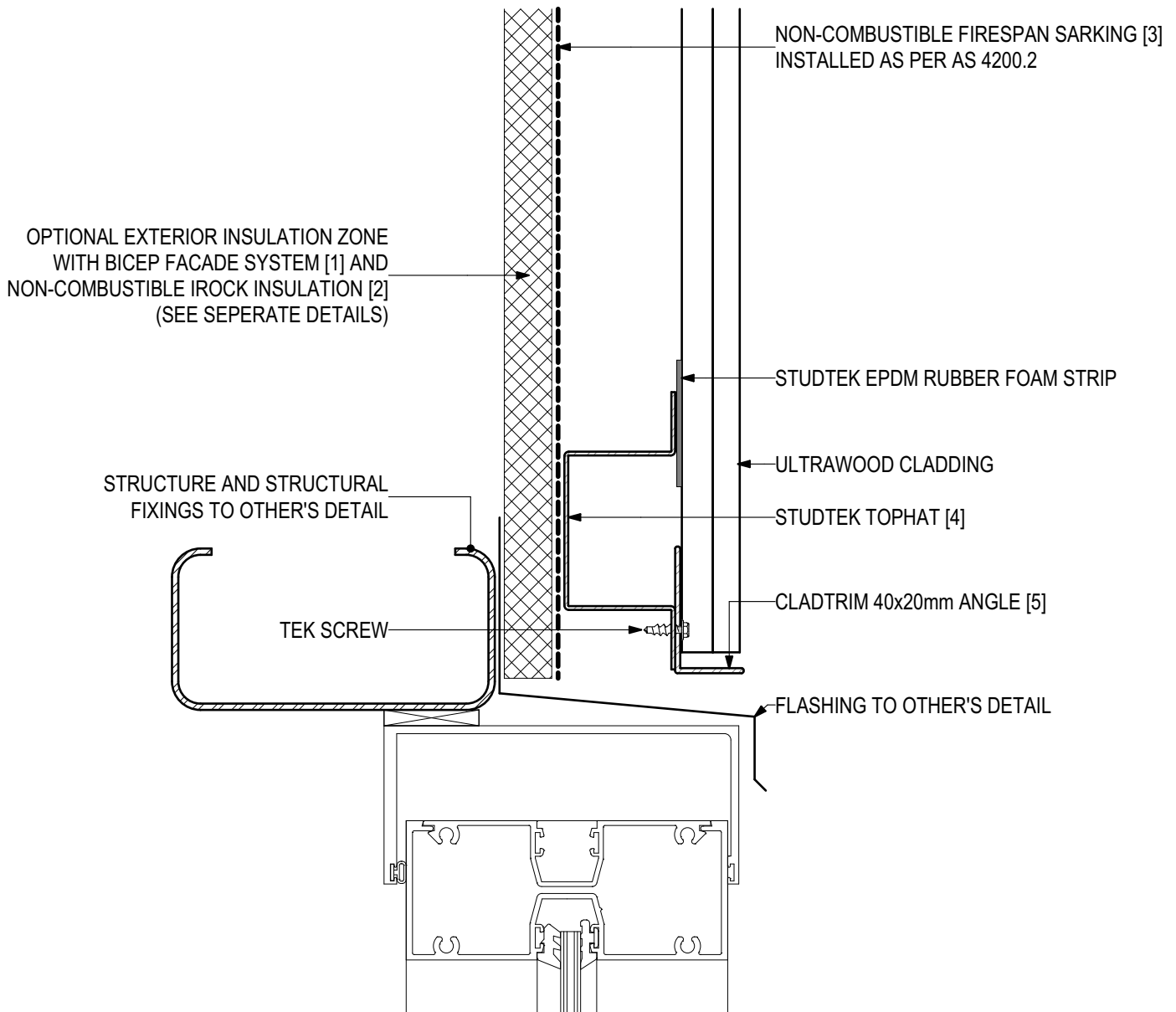
PROLASTIK  
SEALANT [6]





## D.06 - WINDOW HEAD (SCALE 1:2)

### ULTRAWOOD Vertical Cladding Installation (V1123)



## SYSTEM COMPONENTS

BICEP FACADE  
SYSTEM [1]



IROCK  
INSULATION [2]



FIRESpan  
SARKING [3]



STUDTEK  
TOPHAT [4]



CLADTRIM  
TRIMS [5]



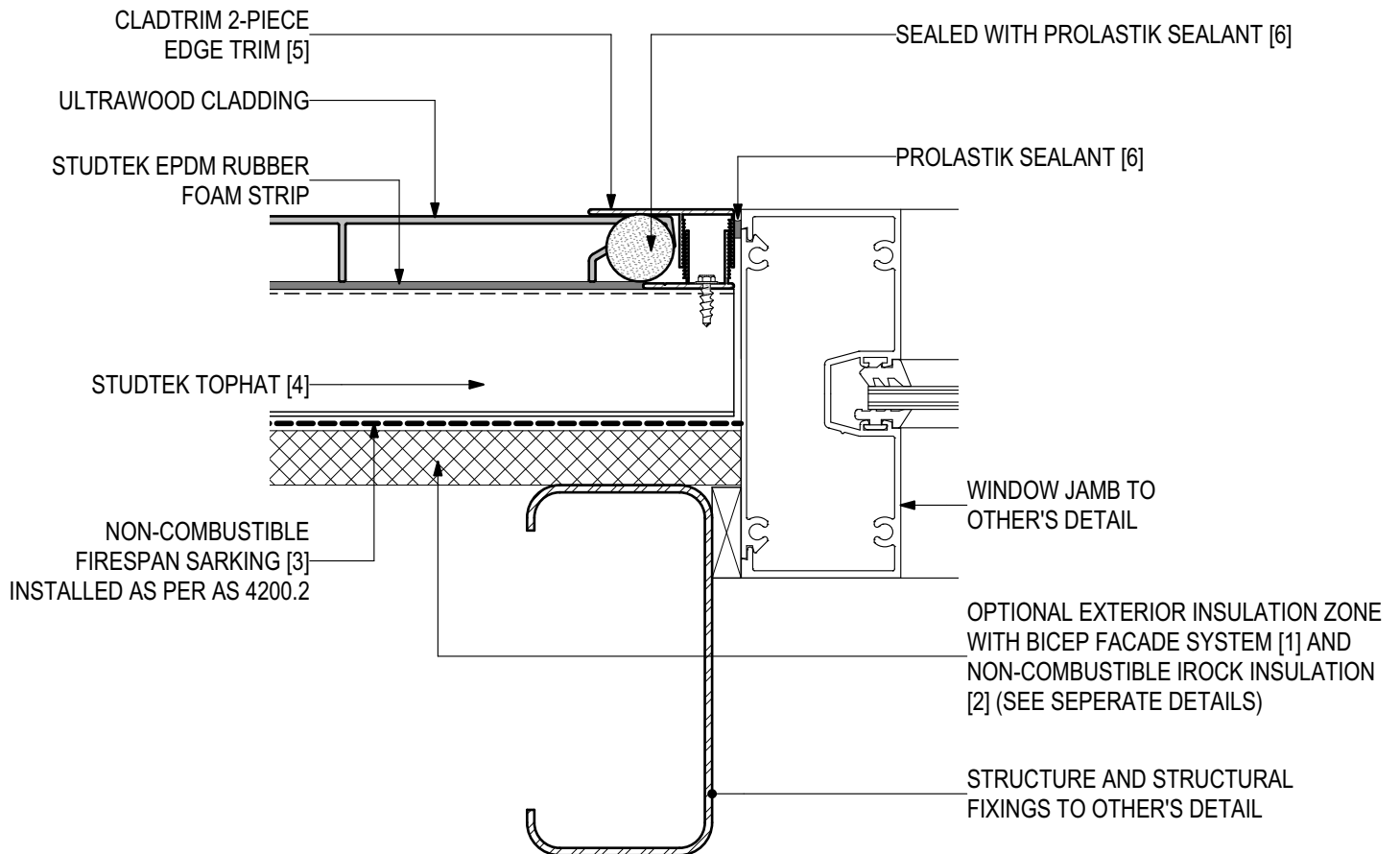
PROLASTIK  
SEALANT [6]





## D.07 - WINDOW JAMB (SCALE 1:2)

### ULTRAWOOD Vertical Cladding Installation (V1123)



## SYSTEM COMPONENTS

BICEP FACADE  
SYSTEM [1]



IROCK  
INSULATION [2]



FIRESAN  
SARKING [3]



STUDTEK  
TOPHAT [4]



CLADTRIM  
TRIMS [5]



PROLASTIK  
SEALANT [6]

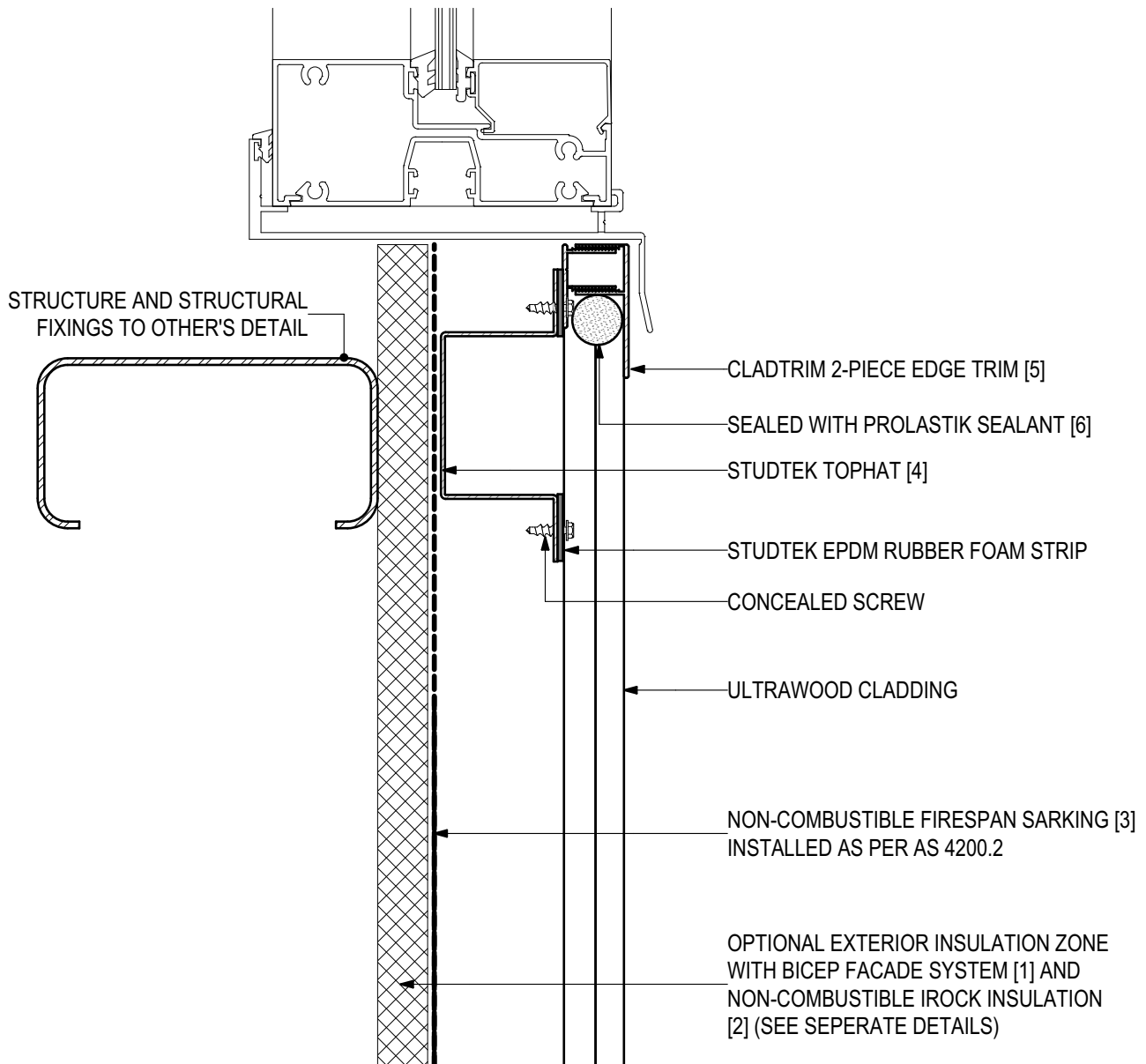






## D.08 - WINDOW SILL (SCALE 1:2)

### ULTRAWOOD Vertical Cladding Installation (V1123)



## SYSTEM COMPONENTS

BICEP FACADE  
SYSTEM [1]



IROCK  
INSULATION [2]



FIRESPAN  
SARKING [3]



STUDTEK  
TOPHAT [4]



CLADTRIM  
TRIMS [5]



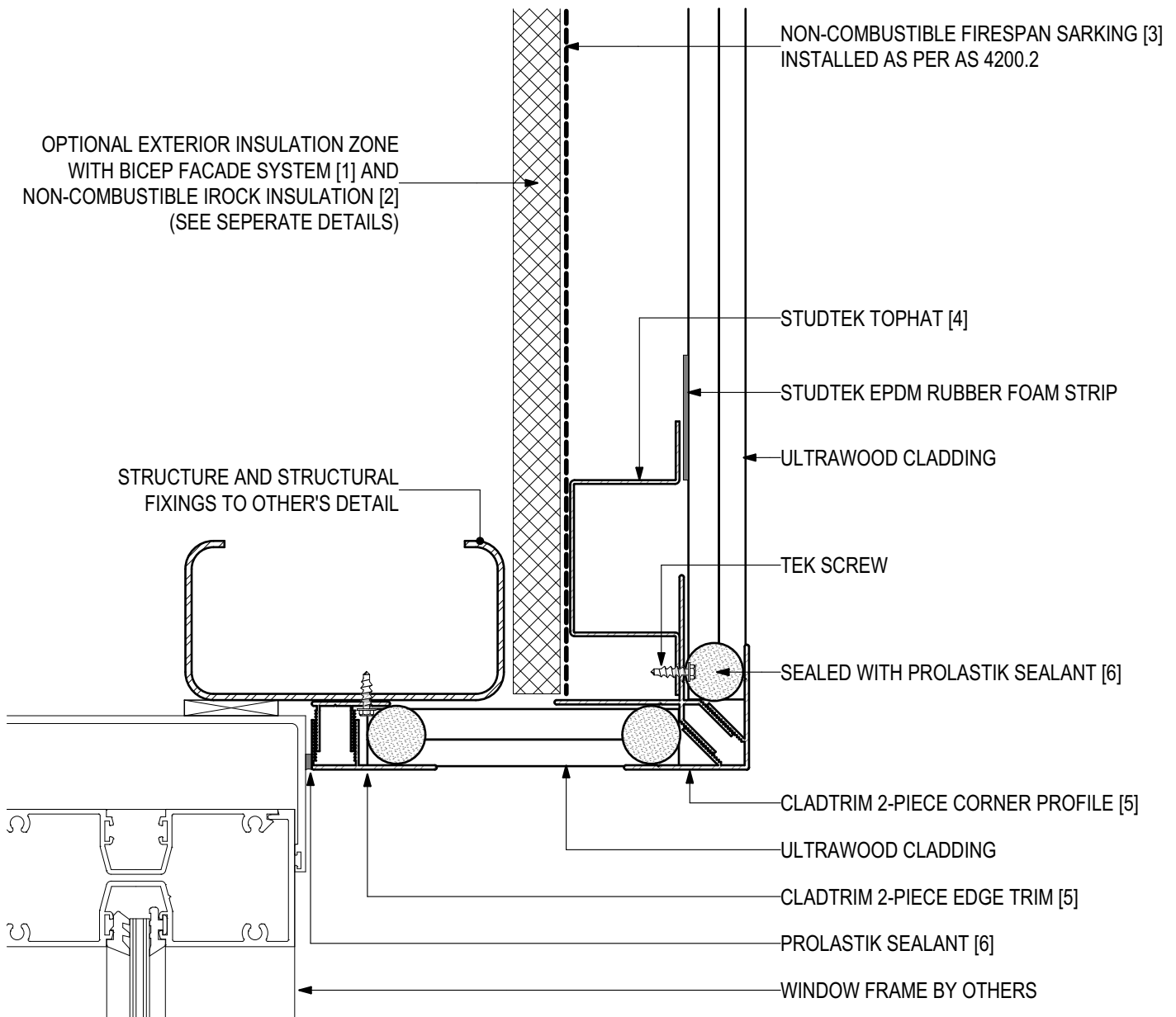
PROLASTIK  
SEALANT [6]





## D.09 - INSET WINDOW HEAD (SCALE 1:2)

### ULTRAWOOD Vertical Cladding Installation (V1123)



## SYSTEM COMPONENTS

BICEP FACADE  
SYSTEM [1]



IROCK  
INSULATION [2]



FIRESpan  
SARKING [3]



STUDTEK  
TOPHAT [4]



CLADTRIM  
TRIMS [5]



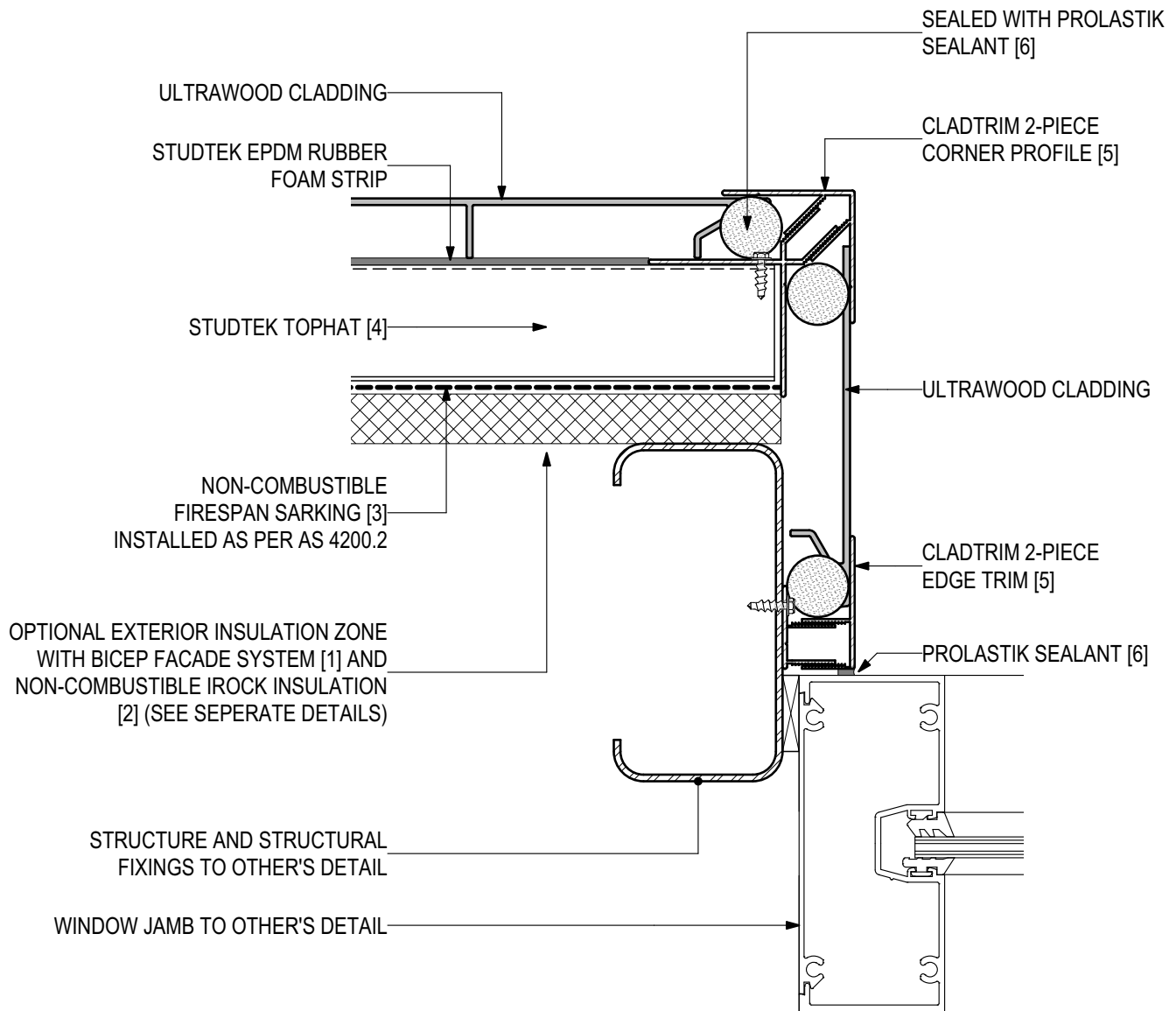
PROLASTIK  
SEALANT [6]





## D.10 - INSET WINDOW JAMB (SCALE 1:2)

### ULTRAWOOD Vertical Cladding Installation (V1123)



## SYSTEM COMPONENTS

BICEP FACADE  
SYSTEM [1]



IROCK  
INSULATION [2]



FIRESPAN  
SARKING [3]



STUDTEK  
TOPHAT [4]



CLADTRIM  
TRIMS [5]



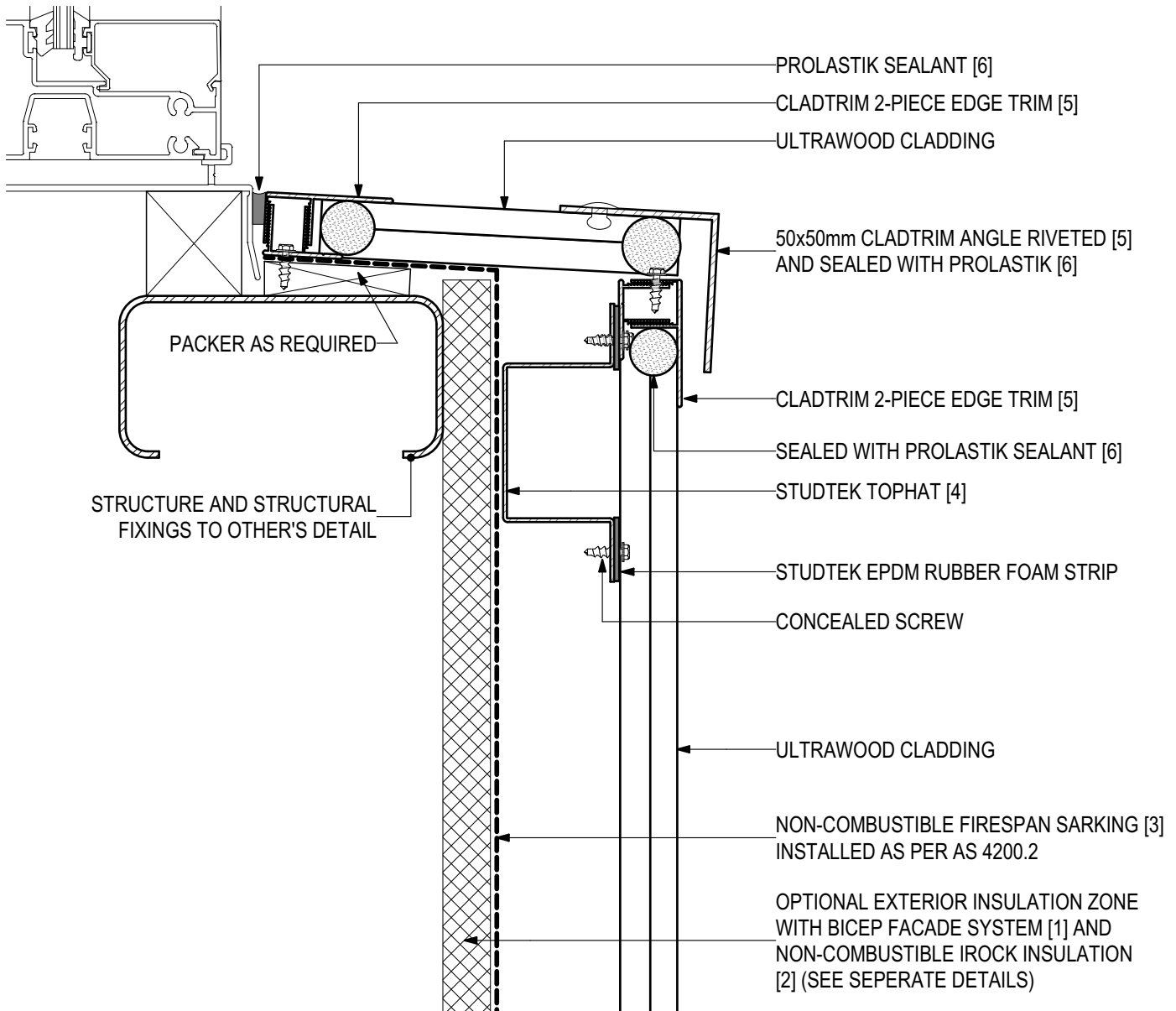
PROLASTIK  
SEALANT [6]





## D.11 - INSET WINDOW SILL (SCALE 1:2)

### ULTRAWOOD Vertical Cladding Installation (V1123)



## SYSTEM COMPONENTS

BICEP FACADE  
SYSTEM [1]



IROCK  
INSULATION [2]



FIRESpan  
SARKING [3]



STUDTEK  
TOPHAT [4]



CLADTRIM  
TRIMS [5]



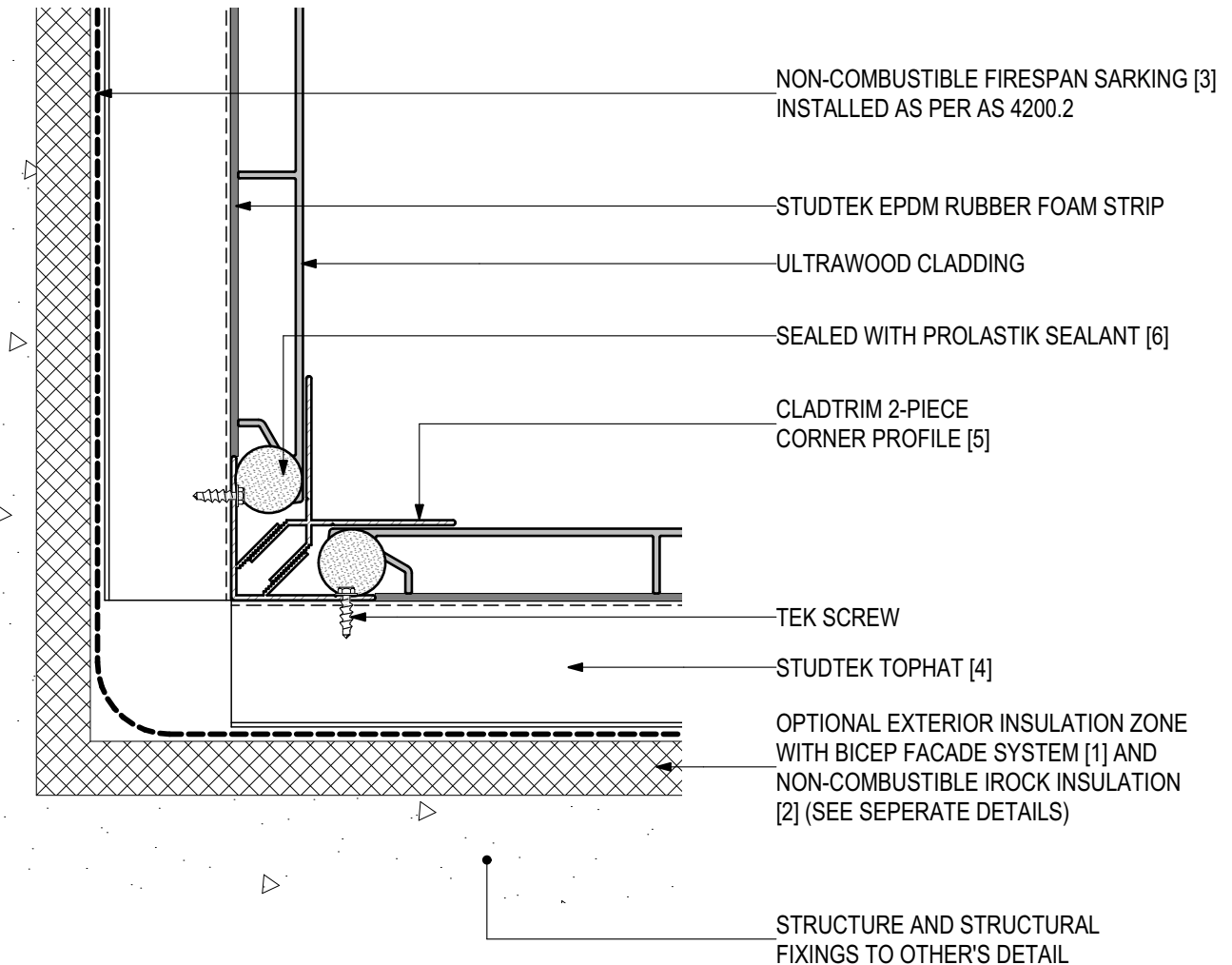
PROLASTIK  
SEALANT [6]





## D.12 - INTERNAL CORNER (SCALE 1:2)

### ULTRAWOOD Vertical Cladding Installation (V1123)



## SYSTEM COMPONENTS

BICEP FACADE  
SYSTEM [1]



IROCK  
INSULATION [2]



FIRESPAN  
SARKING [3]



STUDTEK  
TOPHAT [4]



CLADTRIM  
TRIMS [5]



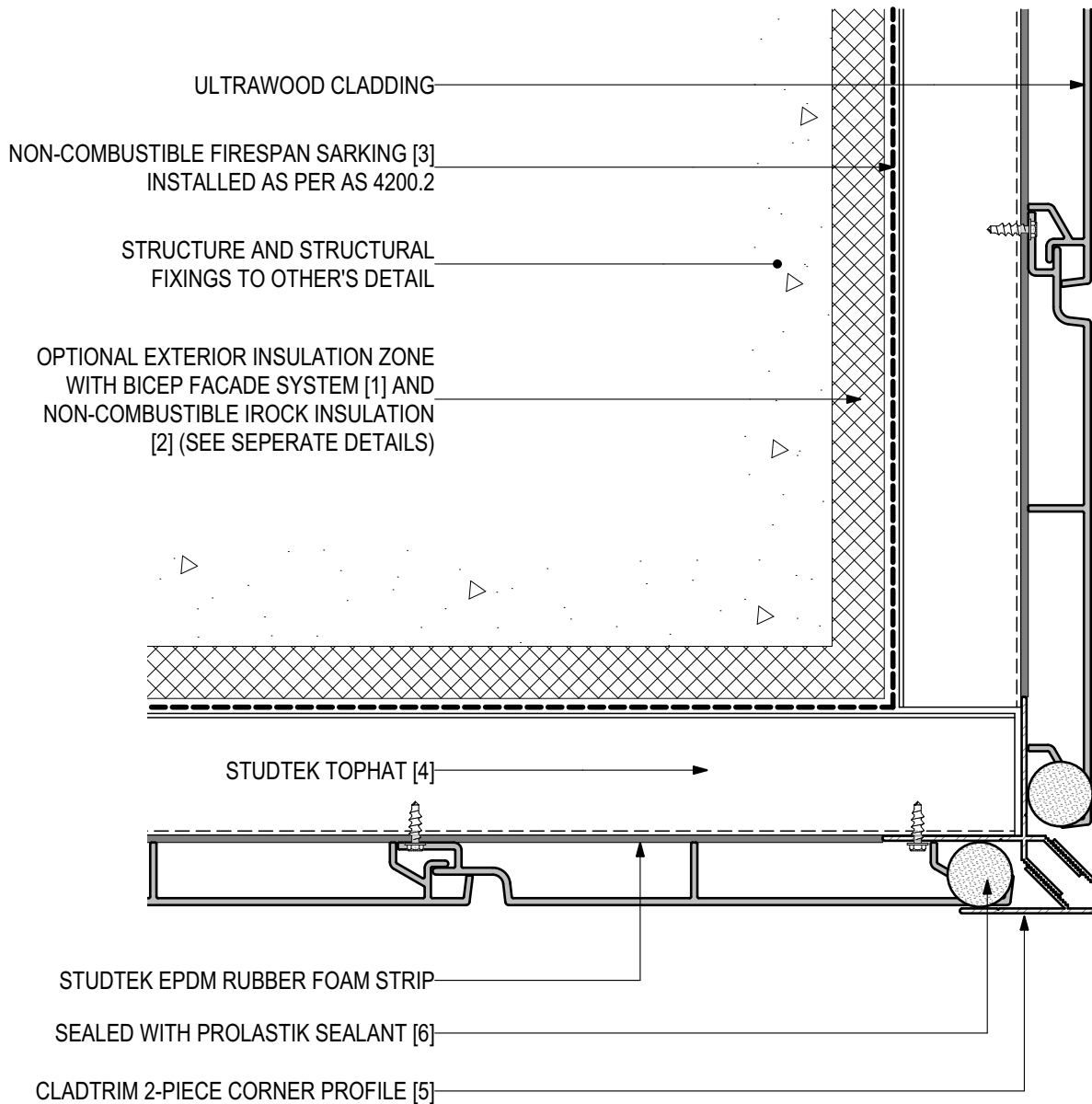
PROLASTIK  
SEALANT [6]





## D.13 - EXTERNAL CORNER (SCALE 1:2)

### ULTRAWOOD Vertical Cladding Installation (V1123)



## SYSTEM COMPONENTS

BICEP FACADE  
SYSTEM [1]



IROCK  
INSULATION [2]



FIRESpan  
SARKING [3]



STUDTEK  
TOPHAT [4]



CLADTRIM  
TRIMS [5]



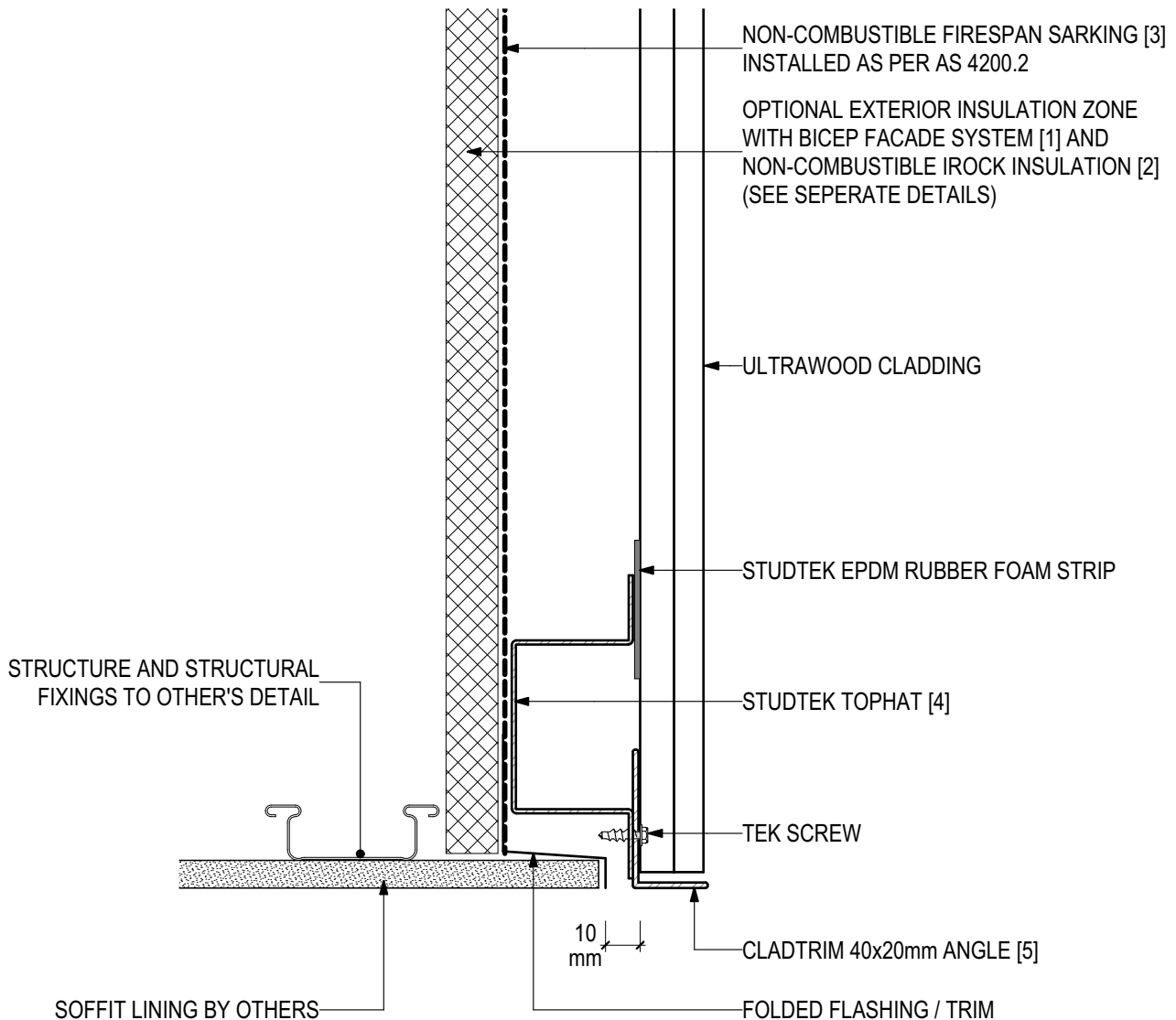
PROLASTIK  
SEALANT [6]





## D.14 - EAVE JUNCTION (SCALE 1:2)

### ULTRAWOOD Vertical Cladding Installation (V1123)



## SYSTEM COMPONENTS

BICEP FACADE  
SYSTEM [1]



IROCK  
INSULATION [2]



FIRESPAN  
SARKING [3]



STUDTEK  
TOPHAT [4]



CLADTRIM  
TRIMS [5]



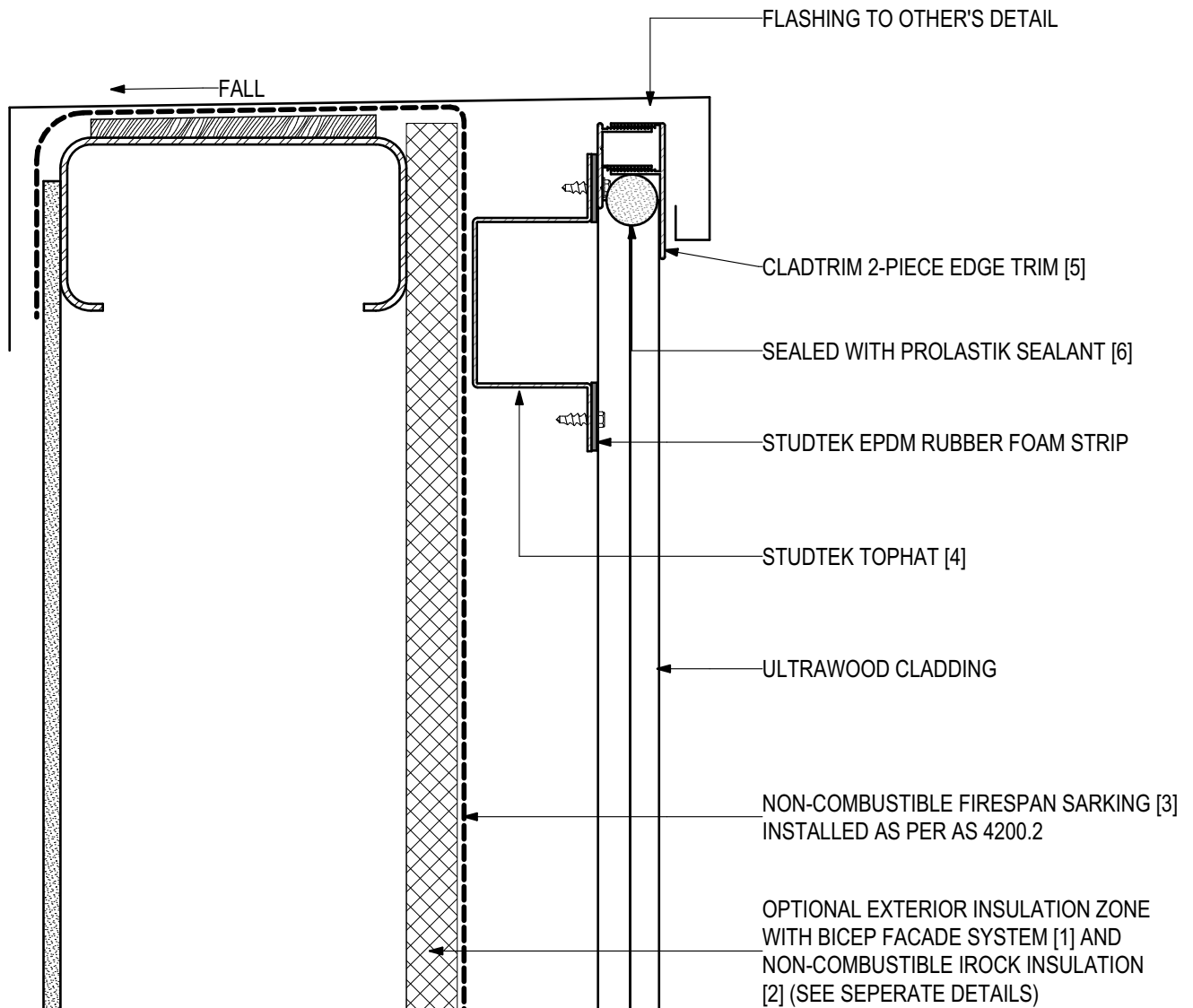
PROLASTIK  
SEALANT [6]





## D.15 - PARAPET DETAIL (SCALE 1:2)

### ULTRAWOOD Vertical Cladding Installation (V1123)



## SYSTEM COMPONENTS

BICEP FACADE  
SYSTEM [1]



IROCK  
INSULATION [2]



FIRESpan  
SARKING [3]



STUDTEK  
TOPHAT [4]



CLADTRIM  
TRIMS [5]



PROLASTIK  
SEALANT [6]

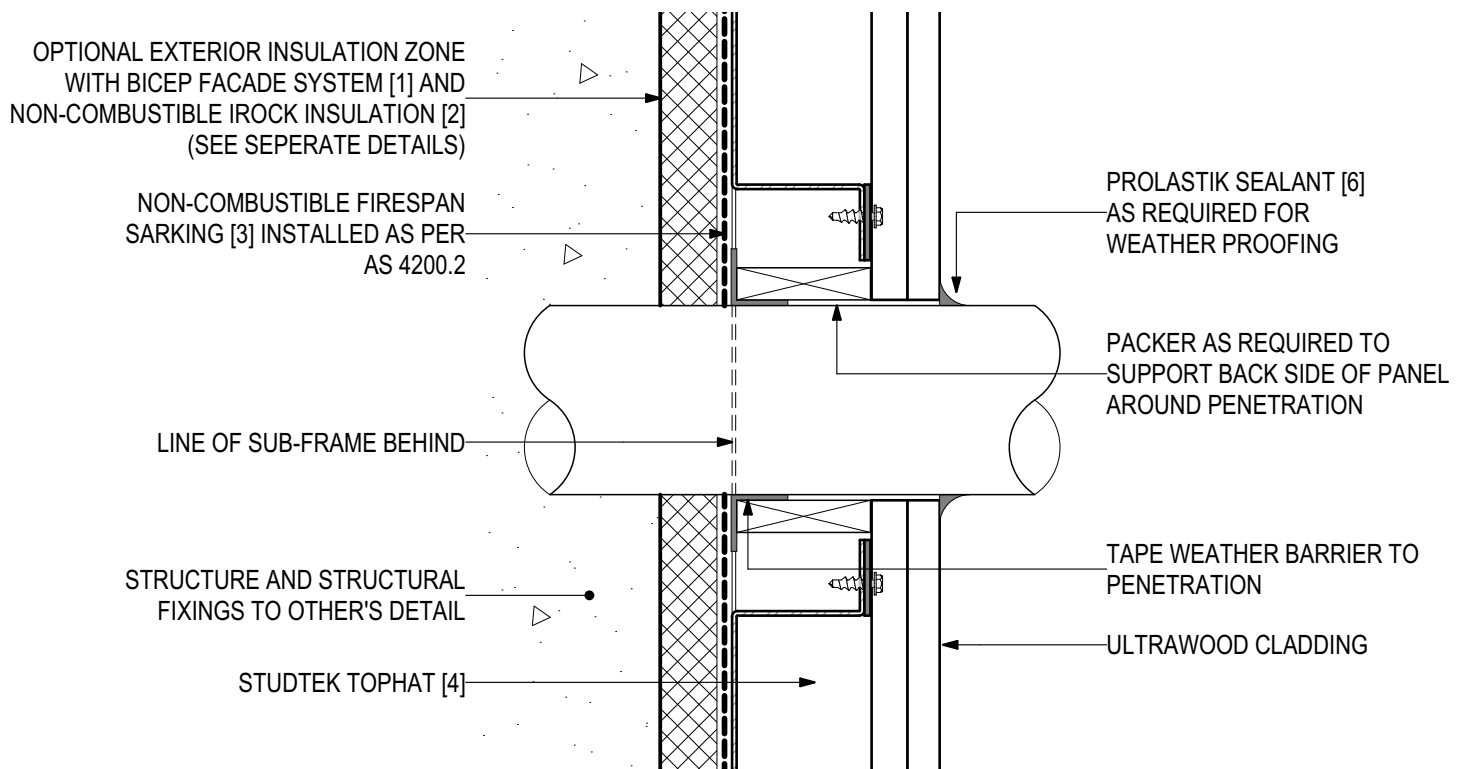






## D.16 - TYPICAL PENETRATION DETAIL (SCALE 1:2)

### ULTRAWOOD Vertical Cladding Installation (V1123)



## SYSTEM COMPONENTS

BICEP FACADE  
SYSTEM [1]



IROCK  
INSULATION [2]



FIRESPAN  
SARKING [3]



STUDTEK  
TOPHAT [4]



CLADTRIM  
TRIMS [5]



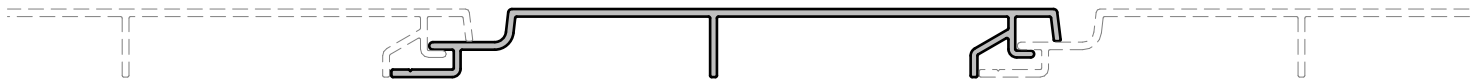
PROLASTIK  
SEALANT [6]



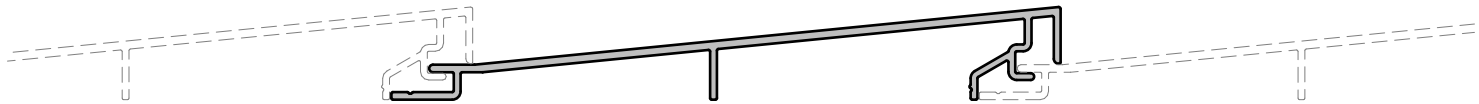


## ULTRAWOOD PROFILES (SCALE 1:2)

### ULTRAWOOD Vertical Cladding Installation (V1123)



**ULTRAWOOD 155x18mm GROOVE PROFILE**



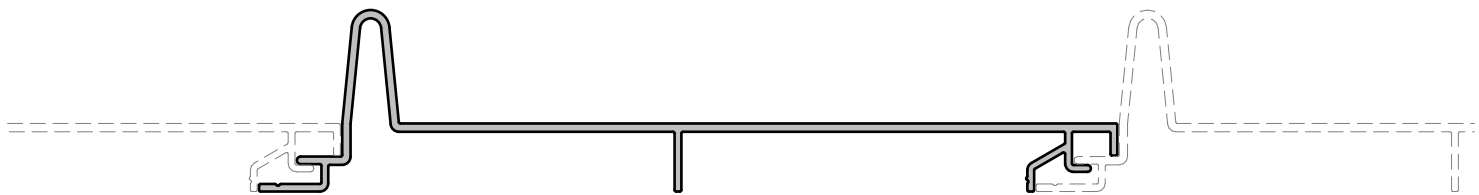
**ULTRAWOOD 155x25mm CABIN PROFILE**



**ULTRAWOOD 155x18mm CONCAVE PROFILE**



**ULTRAWOOD 155x18mm DUOCAVE PROFILE**



**ULTRAWOOD 205x48mm SEAM PROFILE**

## SYSTEM COMPONENTS

BICEP FACADE  
SYSTEM [1]



IROCK  
INSULATION [2]



FIRESpan  
SARKING [3]



STUDEK  
TOPHAT [4]



CLADTRIM  
TRIMS [5]



PROLASTIK  
SEALANT [6]

