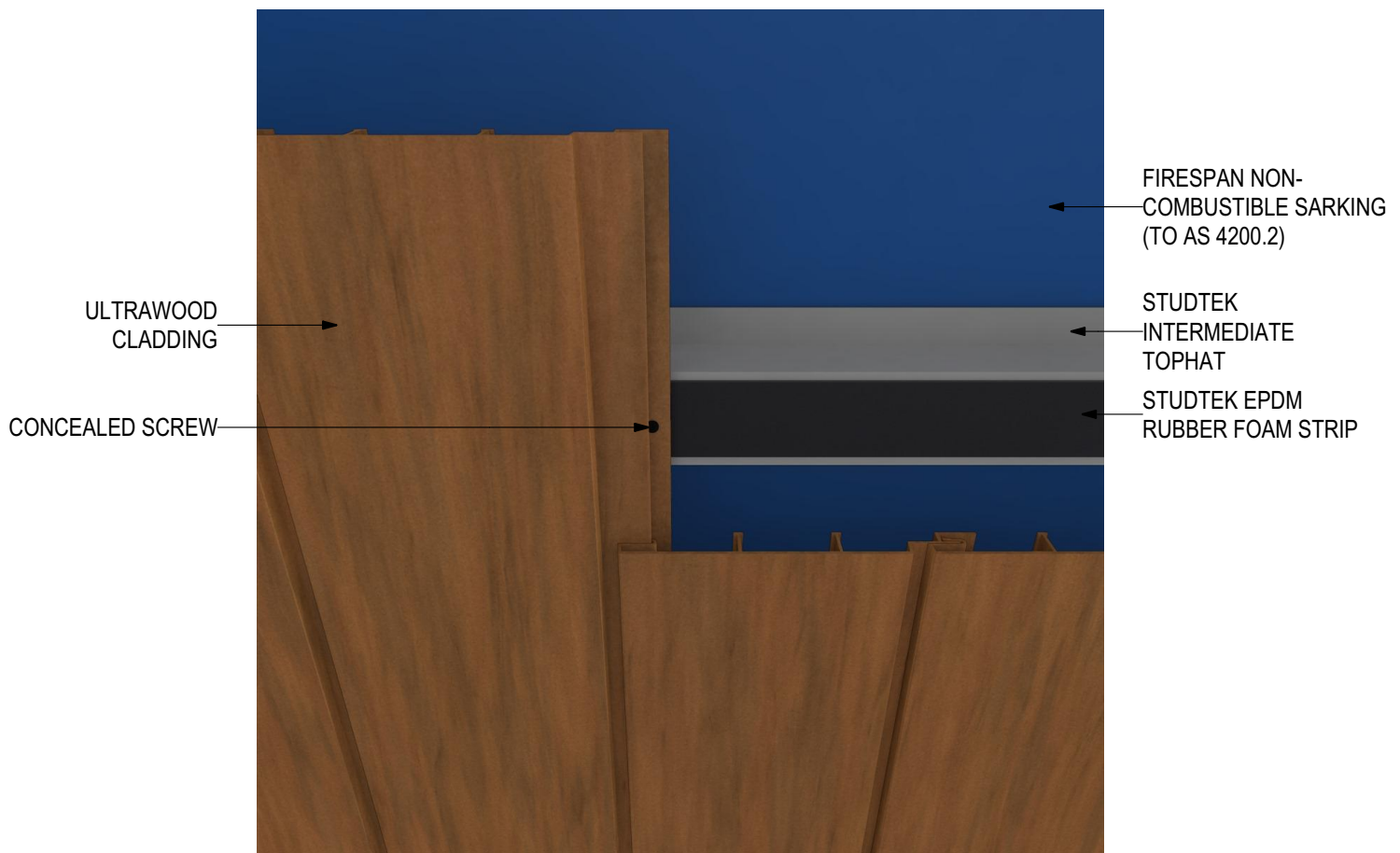


ULTRAWOOD Non-combustible Timber Cladding (V1219) UW-GR-CSF Concealed Screw Fix (Vertical Installation)

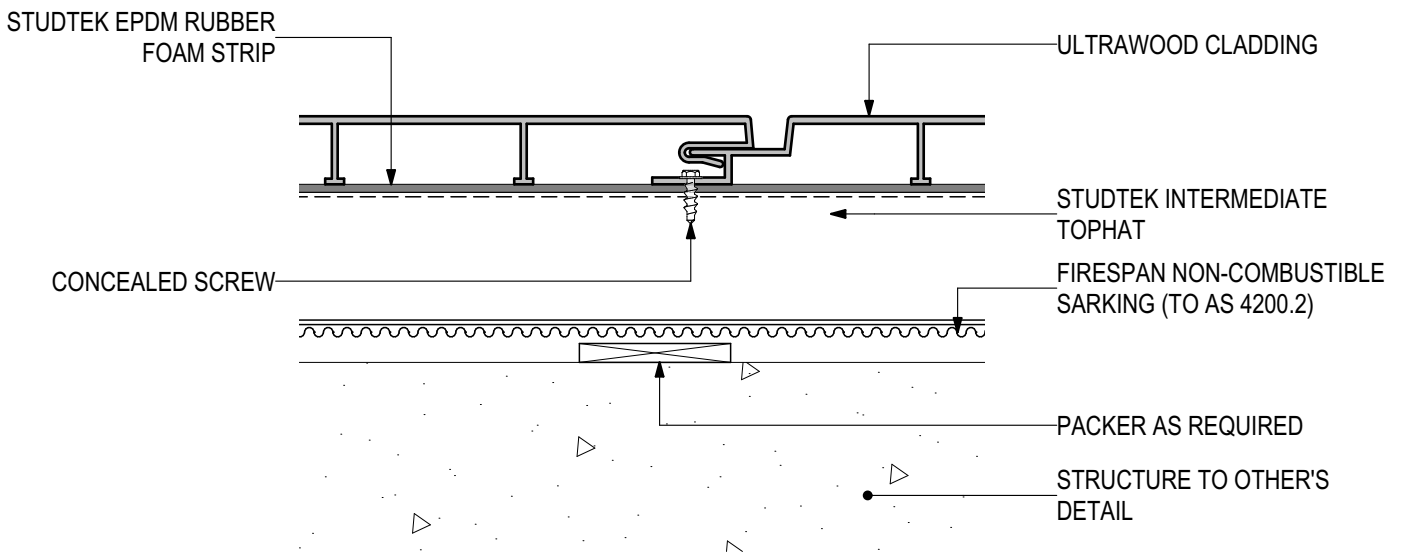


INSTALLATION DETAILS

Disclaimer: These details are general design details for use as a guide. Any use is at the user's own discretion and risk. All detailing and installation should be in accordance with all the relevant codes and standards as per current NCC requirements.

Blue Chip Group Pty Ltd
P: 08 9451 2344
F: 08 9451 8983
E: sales@bluechipgroup.net.au

ULTRAWOOD Non-combustible Timber Cladding (V1219) UW-GR-CSF Concealed Screw Fix (Vertical Installation)



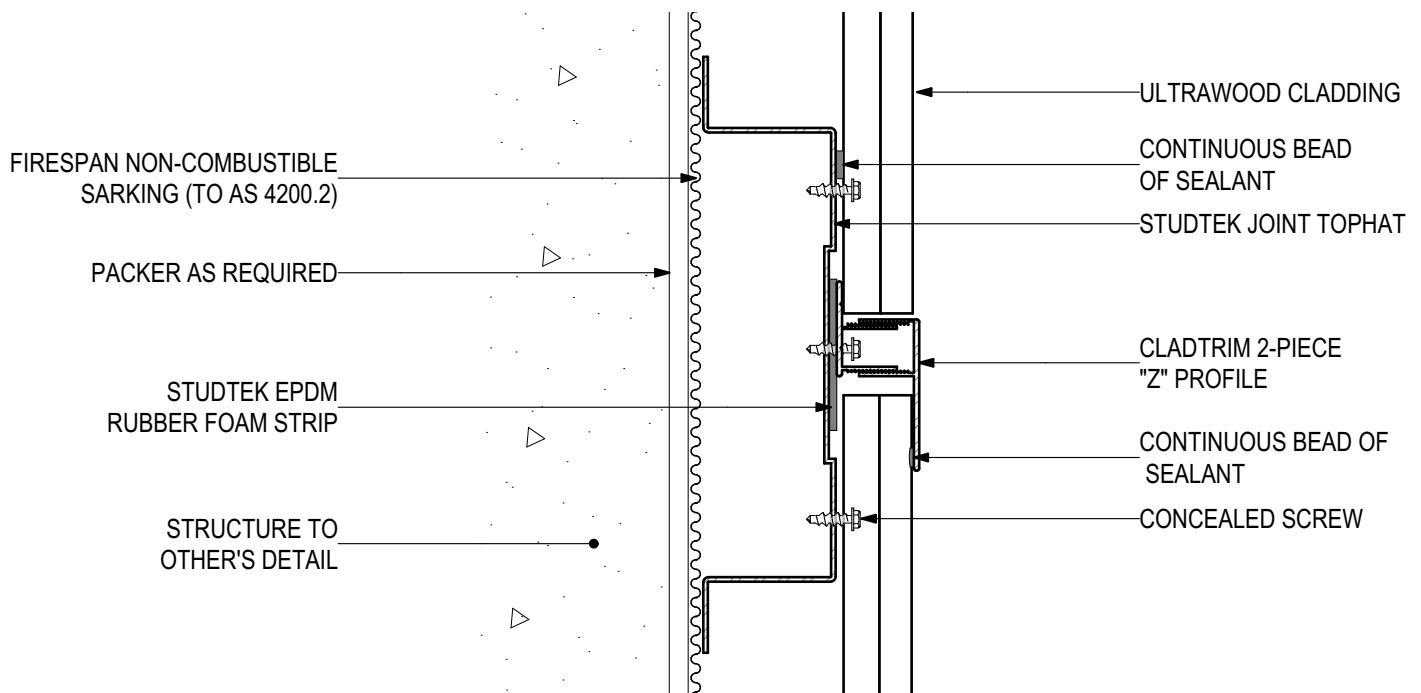
D.01 - TYPICAL FIXING DETAILS

SCALE 1:2

Disclaimer: These details are general design details for use as a guide. Any use is at the user's own discretion and risk. All detailing and installation should be in accordance with all the relevant codes and standards as per current NCC requirements.

Blue Chip Group Pty Ltd
P: 08 9451 2344
F: 08 9451 8983
E: sales@bluechipgroup.net.au

ULTRAWOOD Non-combustible Timber Cladding (V1219) UW-GR-CSF Concealed Screw Fix (Vertical Installation)



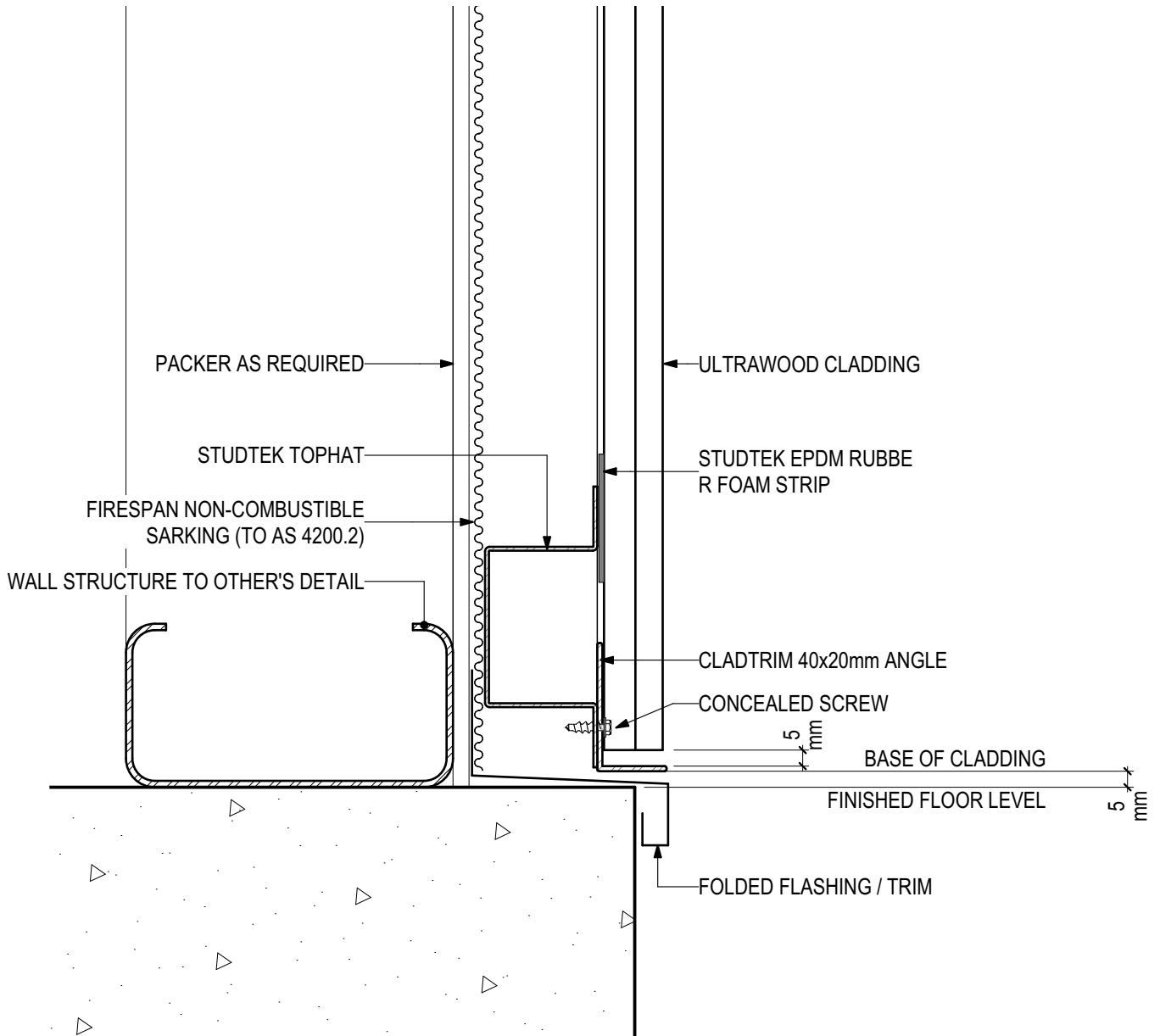
D.02 - JOINT DETAIL

SCALE 1:2

Disclaimer: These details are general design details for use as a guide. Any use is at the user's own discretion and risk. All detailing and installation should be in accordance with all the relevant codes and standards as per current NCC requirements.

Blue Chip Group Pty Ltd
P: 08 9451 2344
F: 08 9451 8983
E: sales@bluechipgroup.net.au

ULTRAWOOD Non-combustible Timber Cladding (V1219) UW-GR-CSF Concealed Screw Fix (Vertical Installation)



D.03 - BASE DETAIL

SCALE 1:2

Disclaimer: These details are general design details for use as a guide. Any use is at the user's own discretion and risk. All detailing and installation should be in accordance with all the relevant codes and standards as per current NCC requirements.

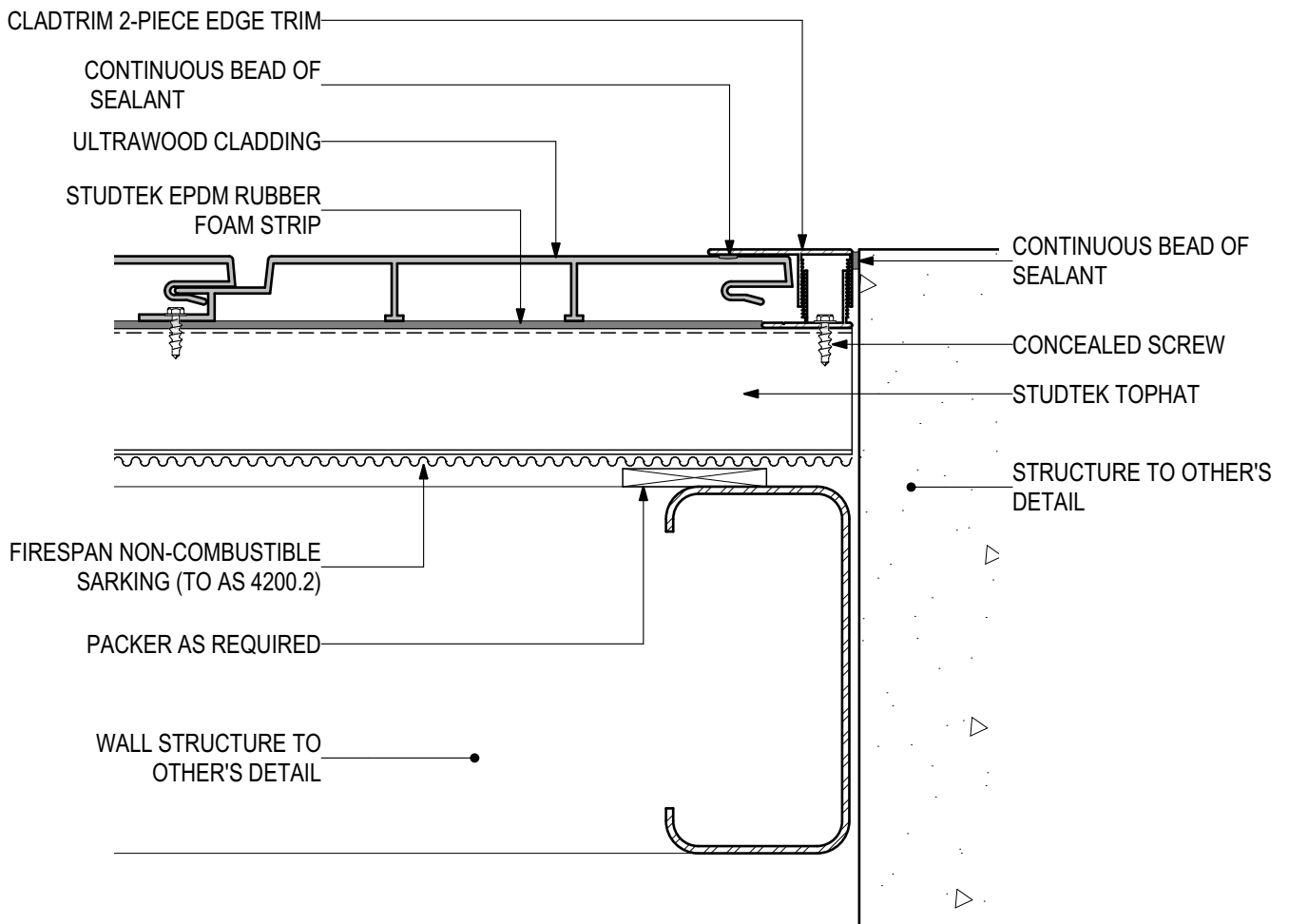
Blue Chip Group Pty Ltd

P: 08 9451 2344

F: 08 9451 8983

E: sales@bluechipgroup.net.au

ULTRAWOOD Non-combustible Timber Cladding (V1219) UW-GR-CSF Concealed Screw Fix (Vertical Installation)



D.04 - WALL ABUTMENT

SCALE 1:2

Disclaimer: These details are general design details for use as a guide. Any use is at the user's own discretion and risk. All detailing and installation should be in accordance with all the relevant codes and standards as per current NCC requirements.

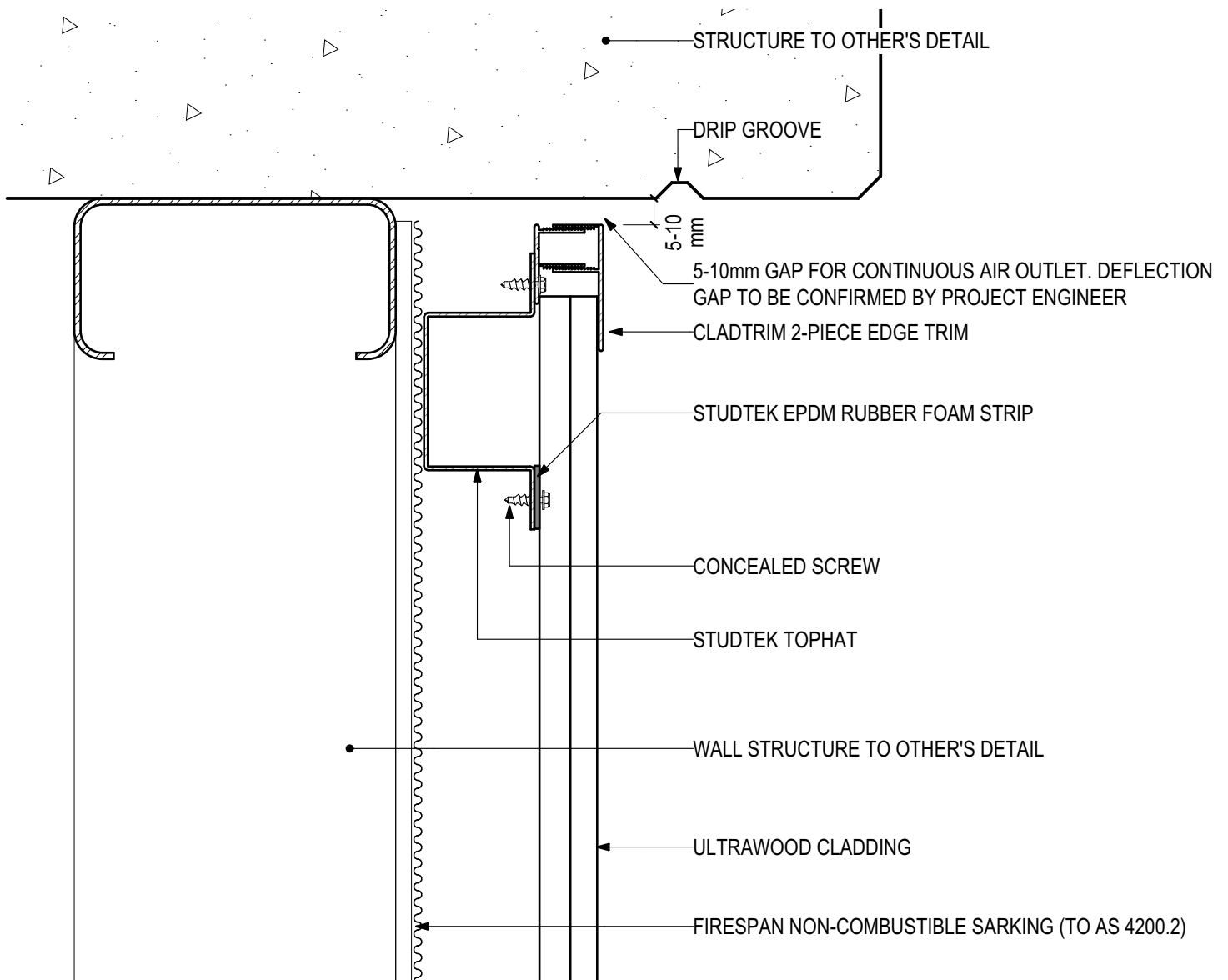
Blue Chip Group Pty Ltd

P: 08 9451 2344

F: 08 9451 8983

E: sales@bluechipgroup.net.au

ULTRAWOOD Non-combustible Timber Cladding (V1219)
UW-GR-CSF Concealed Screw Fix (Vertical Installation)



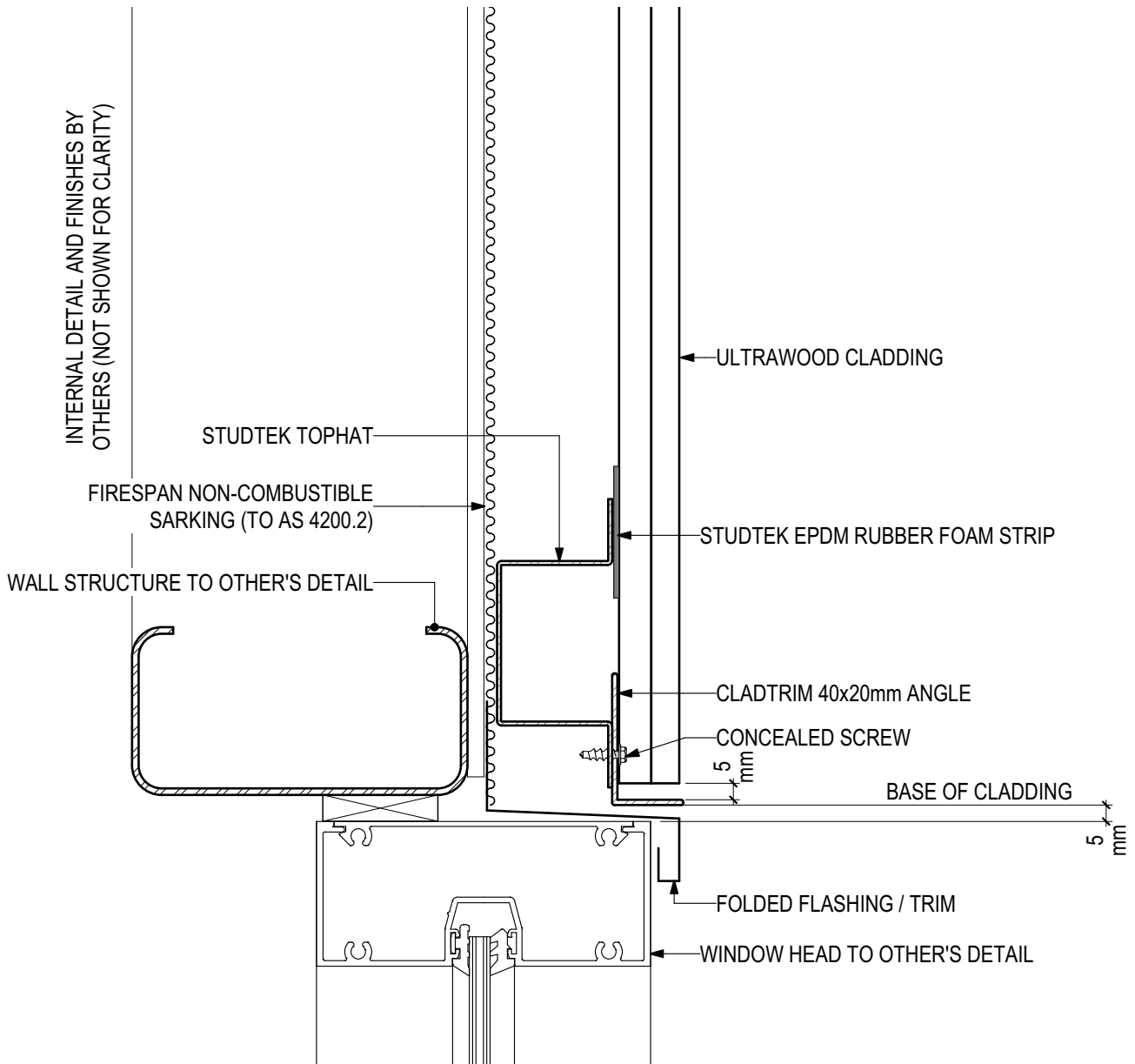
D.05 - HEAD AT SLAB

SCALE 1:2

Disclaimer: These details are general design details for use as a guide. Any use is at the user's own discretion and risk. All detailing and installation should be in accordance with all the relevant codes and standards as per current NCC requirements.

Blue Chip Group Pty Ltd
P: 08 9451 2344
F: 08 9451 8983
E: sales@bluechipgroup.net.au

ULTRAWOOD Non-combustible Timber Cladding (V1219)
UW-GR-CSF Concealed Screw Fix (Vertical Installation)



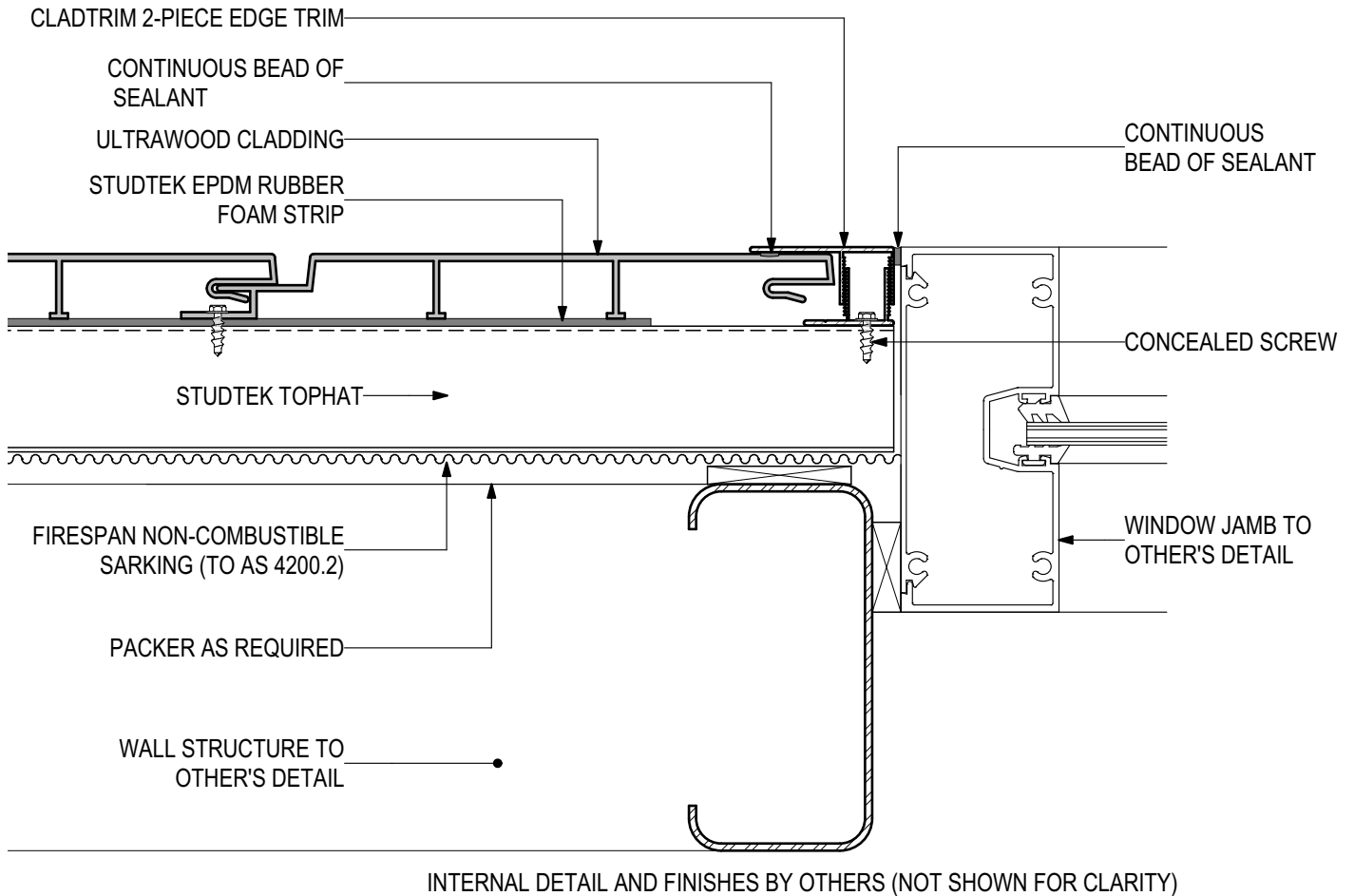
D.06 - WINDOW HEAD

SCALE 1:2

Disclaimer: These details are general design details for use as a guide. Any use is at the user's own discretion and risk. All detailing and installation should be in accordance with all the relevant codes and standards as per current NCC requirements.

Blue Chip Group Pty Ltd
P: 08 9451 2344
F: 08 9451 8983
E: sales@bluechipgroup.net.au

ULTRAWOOD Non-combustible Timber Cladding (V1219) UW-GR-CSF Concealed Screw Fix (Vertical Installation)



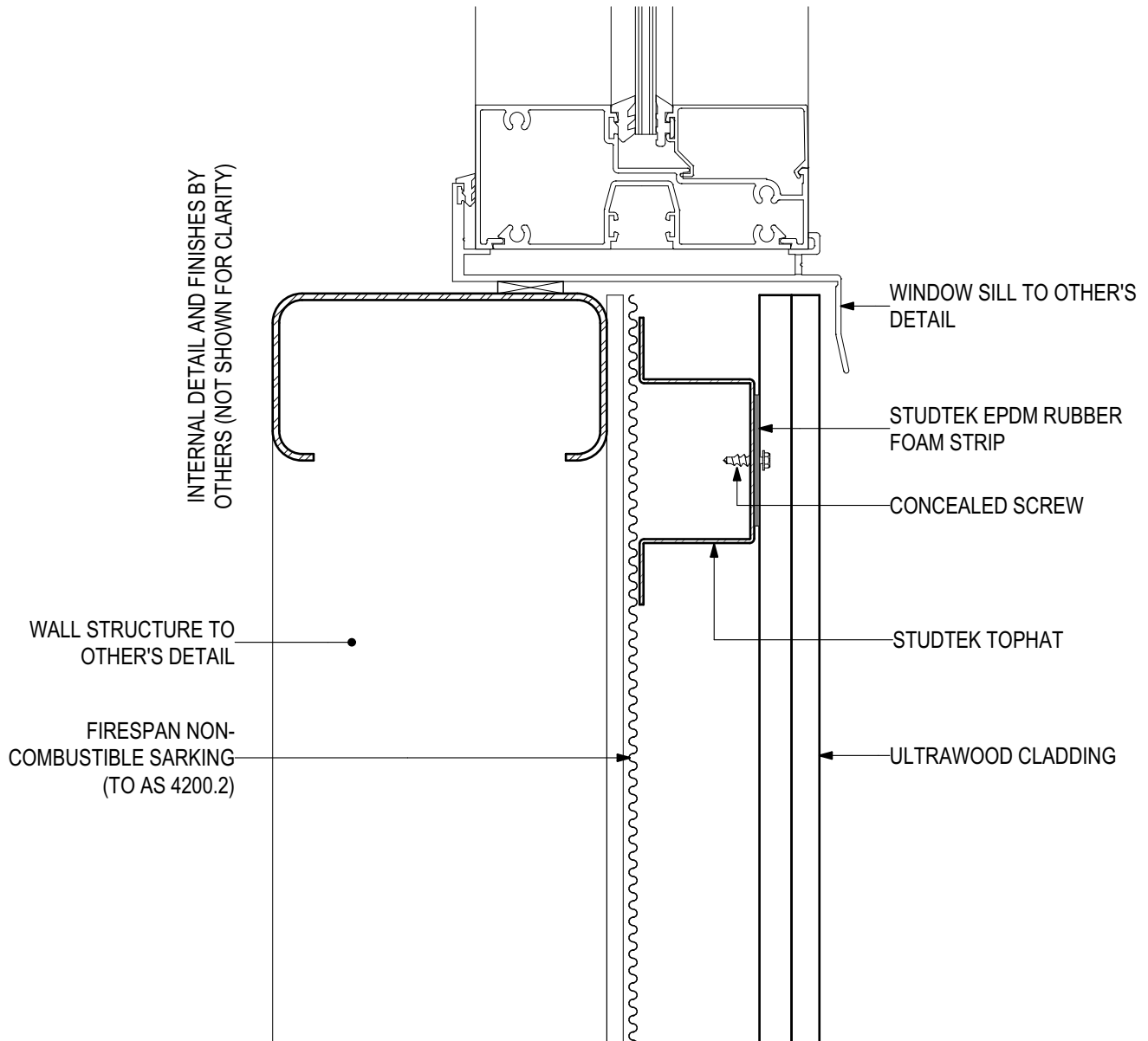
D.07 - WINDOW JAMB

SCALE 1:2

Disclaimer: These details are general design details for use as a guide. Any use is at the user's own discretion and risk. All detailing and installation should be in accordance with all the relevant codes and standards as per current NCC requirements.

Blue Chip Group Pty Ltd
P: 08 9451 2344
F: 08 9451 8983
E: sales@bluechipgroup.net.au

ULTRAWOOD Non-combustible Timber Cladding (V1219) UW-GR-CSF Concealed Screw Fix (Vertical Installation)



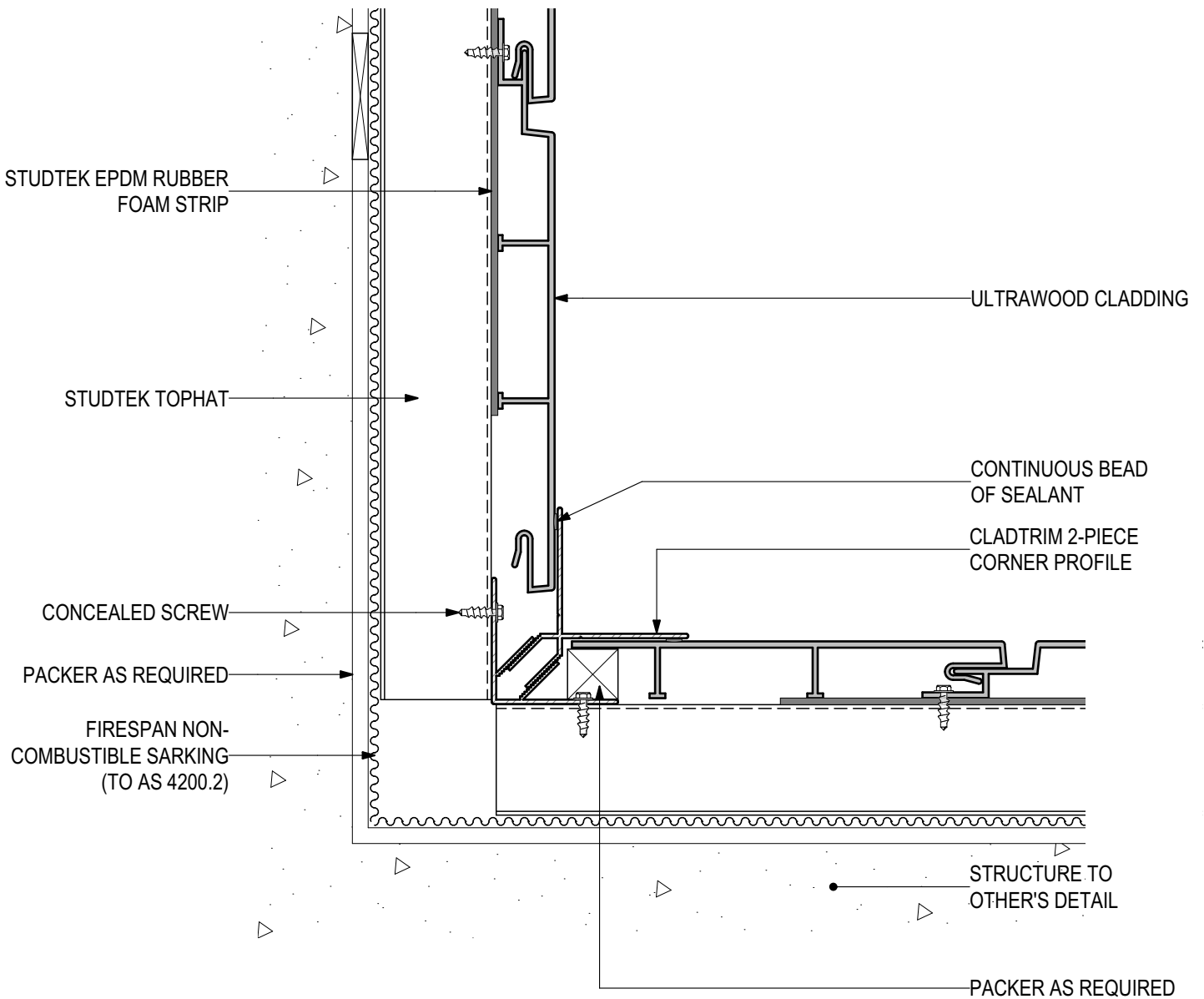
D.08 - WINDOW SILL

SCALE 1:2

Disclaimer: These details are general design details for use as a guide. Any use is at the user's own discretion and risk. All detailing and installation should be in accordance with all the relevant codes and standards as per current NCC requirements.

Blue Chip Group Pty Ltd
P: 08 9451 2344
F: 08 9451 8983
E: sales@bluechipgroup.net.au

ULTRAWOOD Non-combustible Timber Cladding (V1219)
UW-GR-CSF Concealed Screw Fix (Vertical Installation)



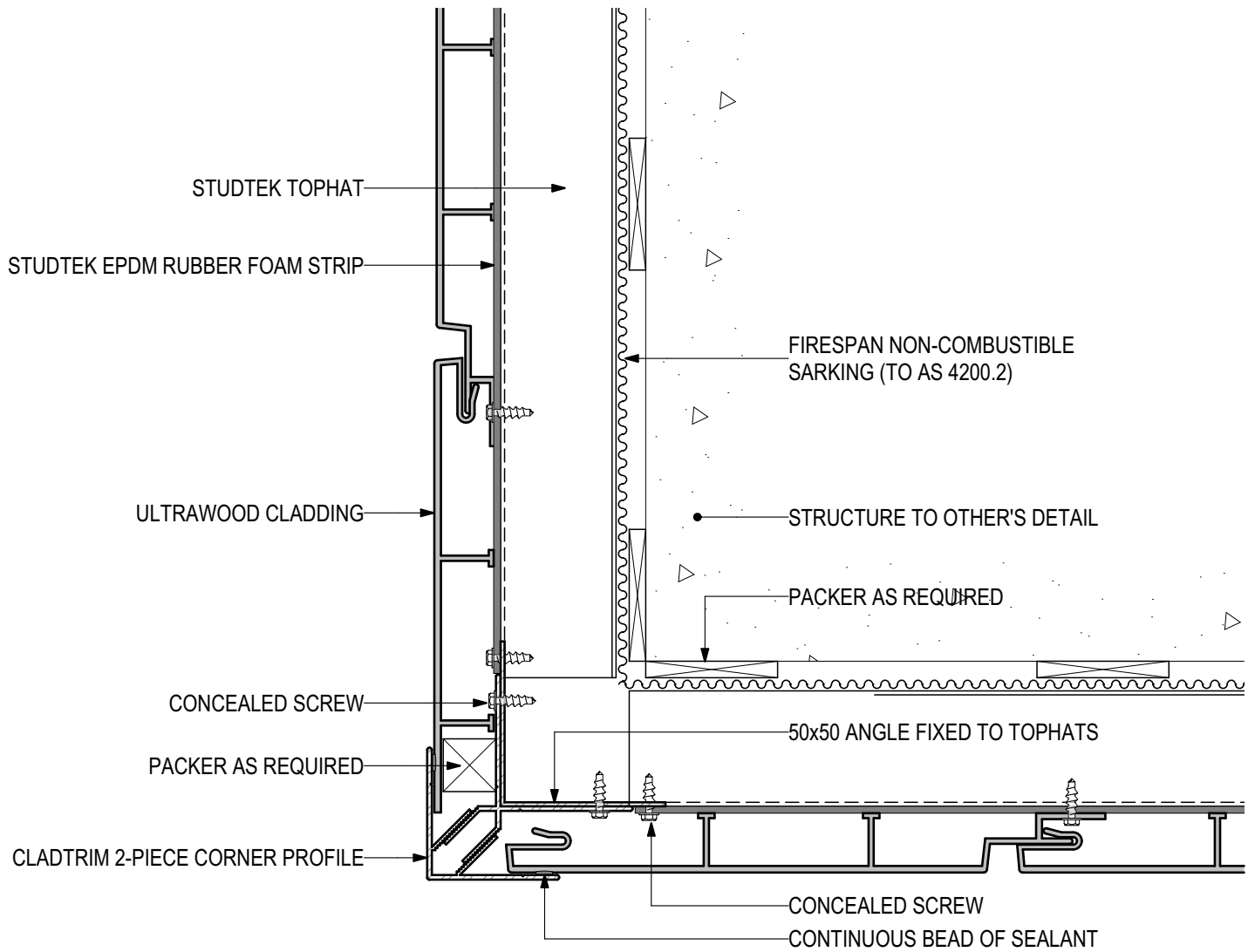
D.09 - INTERNAL CORNER

SCALE 1:2

Disclaimer: These details are general design details for use as a guide. Any use is at the user's own discretion and risk. All detailing and installation should be in accordance with all the relevant codes and standards as per current NCC requirements.

Blue Chip Group Pty Ltd
P: 08 9451 2344
F: 08 9451 8983
E: sales@bluechipgroup.net.au

ULTRAWOOD Non-combustible Timber Cladding (V1219)
UW-GR-CSF Concealed Screw Fix (Vertical Installation)



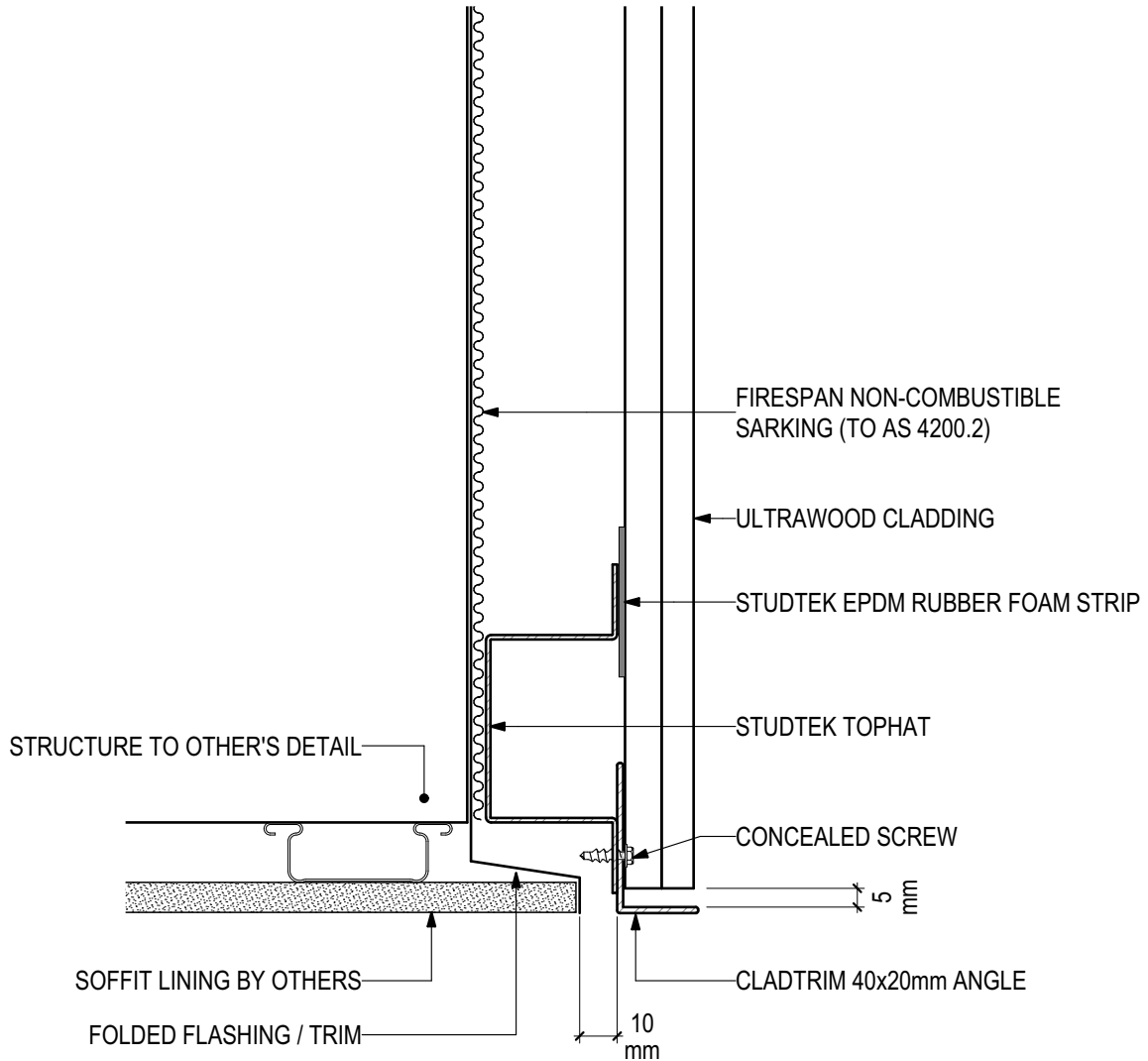
D.10 - EXTERNAL CORNER

SCALE 1:2

Disclaimer: These details are general design details for use as a guide. Any use is at the user's own discretion and risk. All detailing and installation should be in accordance with all the relevant codes and standards as per current NCC requirements.

Blue Chip Group Pty Ltd
P: 08 9451 2344
F: 08 9451 8983
E: sales@bluechipgroup.net.au

ULTRAWOOD Non-combustible Timber Cladding (V1219) UW-GR-CSF Concealed Screw Fix (Vertical Installation)



D.11 - EAVE JUNCTION

SCALE 1:2

Disclaimer: These details are general design details for use as a guide. Any use is at the user's own discretion and risk. All detailing and installation should be in accordance with all the relevant codes and standards as per current NCC requirements.

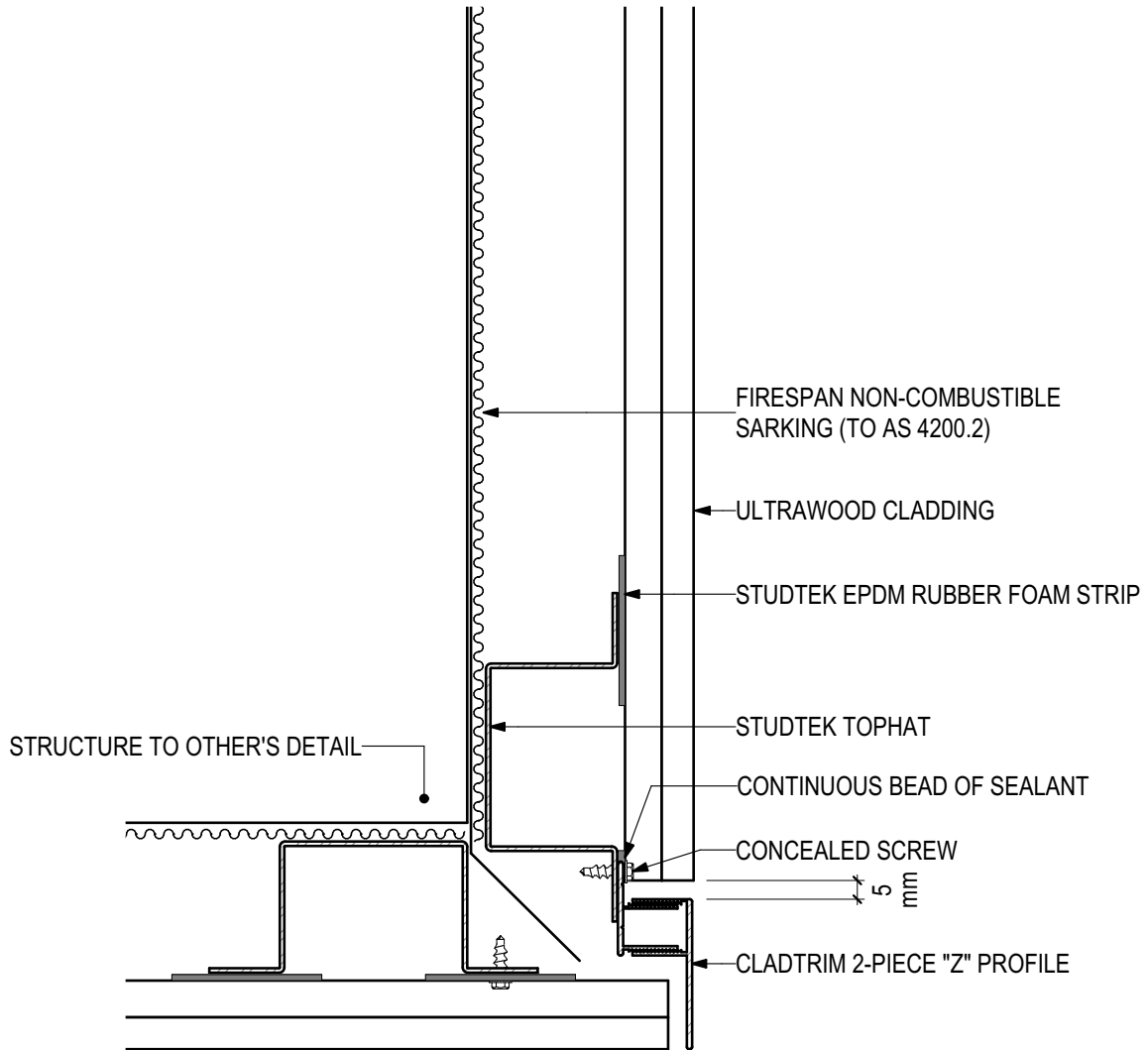
Blue Chip Group Pty Ltd

P: 08 9451 2344

F: 08 9451 8983

E: sales@bluechipgroup.net.au

ULTRAWOOD Non-combustible Timber Cladding (V1219) UW-GR-CSF Concealed Screw Fix (Vertical Installation)



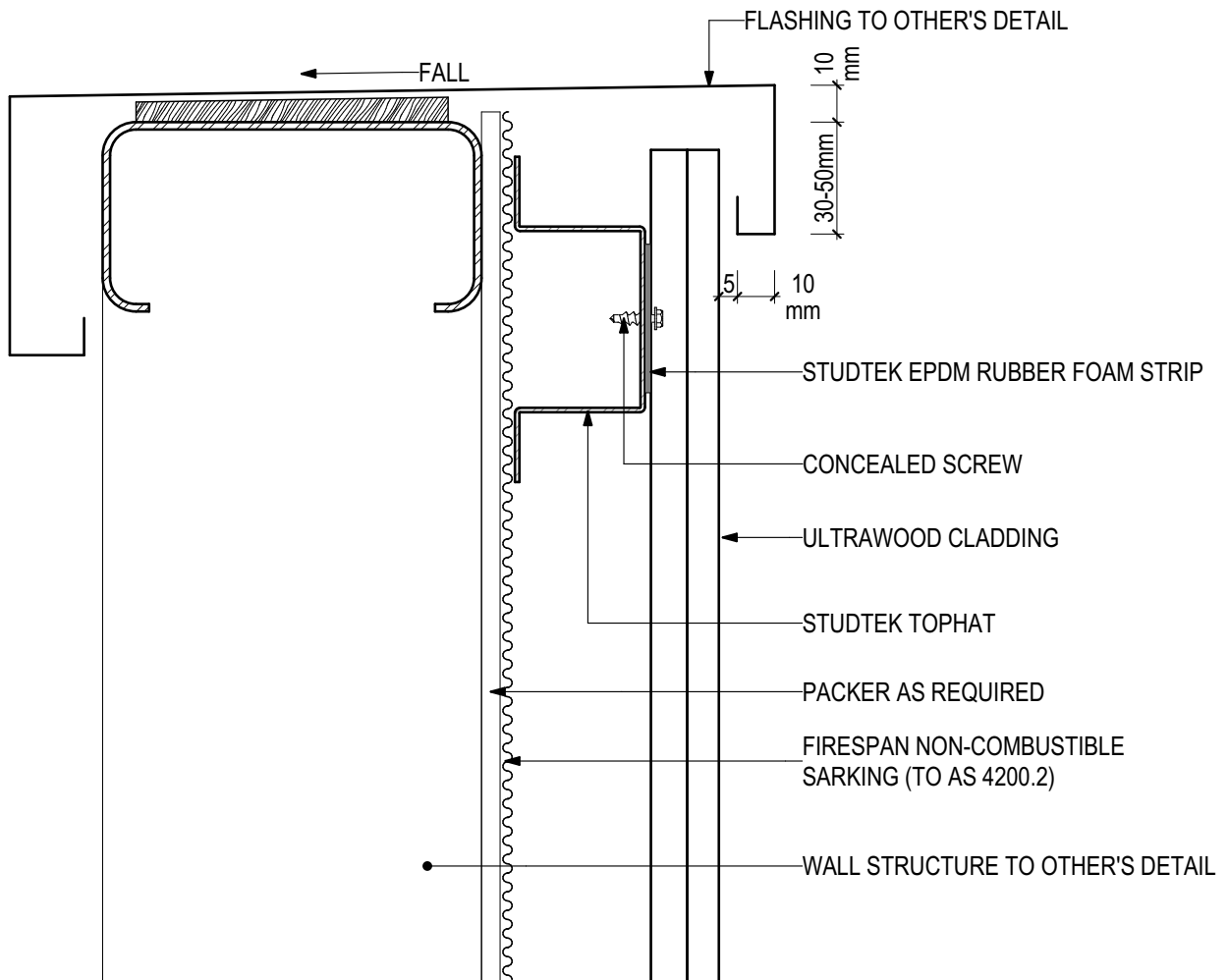
D.12 - CLADDING RETURN DETAIL

SCALE 1:2

Disclaimer: These details are general design details for use as a guide. Any use is at the user's own discretion and risk. All detailing and installation should be in accordance with all the relevant codes and standards as per current NCC requirements.

Blue Chip Group Pty Ltd
P: 08 9451 2344
F: 08 9451 8983
E: sales@bluechipgroup.net.au

ULTRAWOOD Non-combustible Timber Cladding (V1219)
UW-GR-CSF Concealed Screw Fix (Vertical Installation)



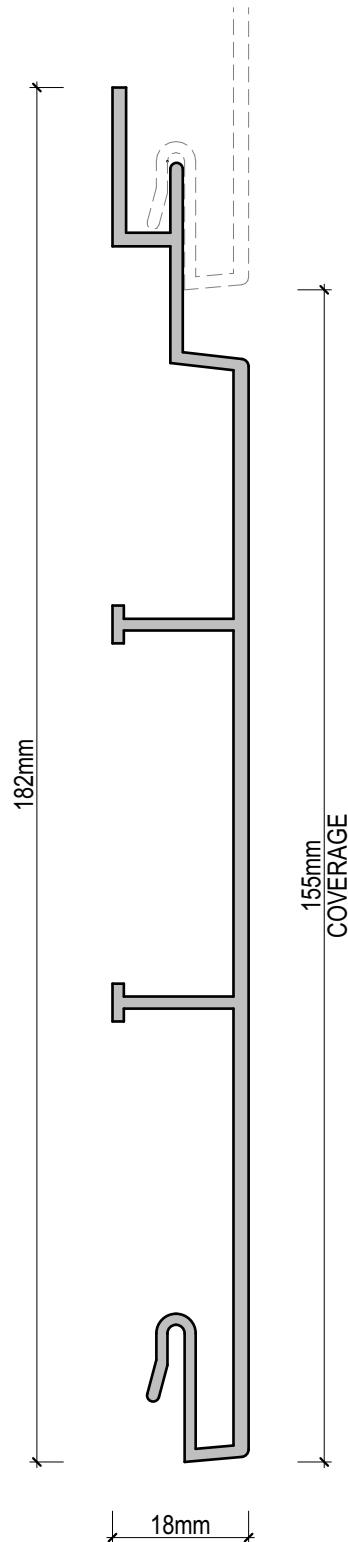
D.13 - PARAPET DETAIL

SCALE 1:2

Disclaimer: These details are general design details for use as a guide. Any use is at the user's own discretion and risk. All detailing and installation should be in accordance with all the relevant codes and standards as per current NCC requirements.

Blue Chip Group Pty Ltd
P: 08 9451 2344
F: 08 9451 8983
E: sales@bluechipgroup.net.au

ULTRAWOOD Non-combustible Timber Cladding (V1219)
UW-GR-CSF Concealed Screw Fix (Vertical Installation)



ULTRAWOOD - ULTRAWOOD PROFILE (UWG155)

SCALE 1:1

Disclaimer: These details are general design details for use as a guide. Any use is at the user's own discretion and risk. All detailing and installation should be in accordance with all the relevant codes and standards as per current NCC requirements.

Blue Chip Group Pty Ltd
P: 08 9451 2344
F: 08 9451 8983
E: sales@bluechipgroup.net.au