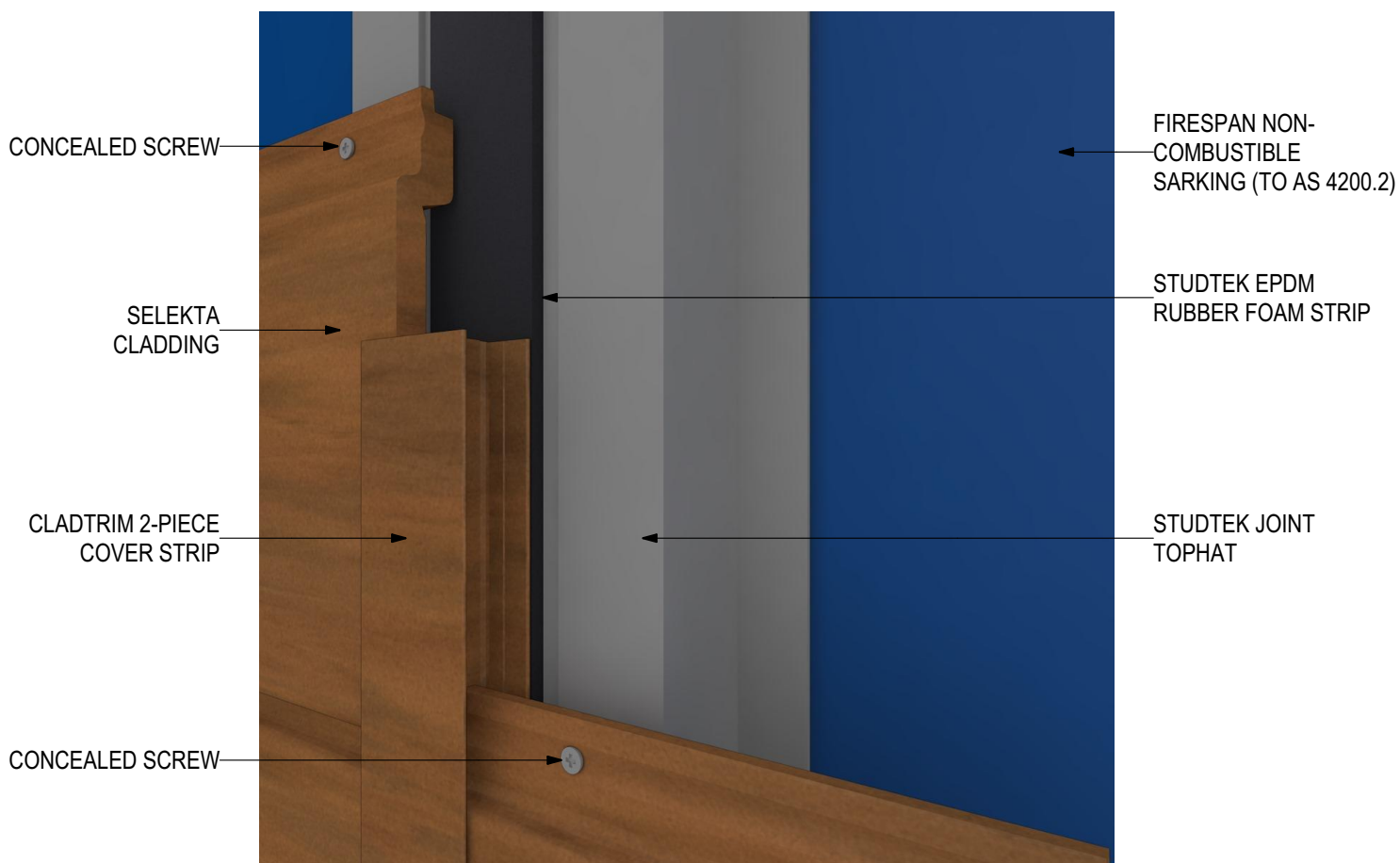


SELEKTA Timber Composite Cladding (V0120) SK-GR-CSF Concealed Screw Fix

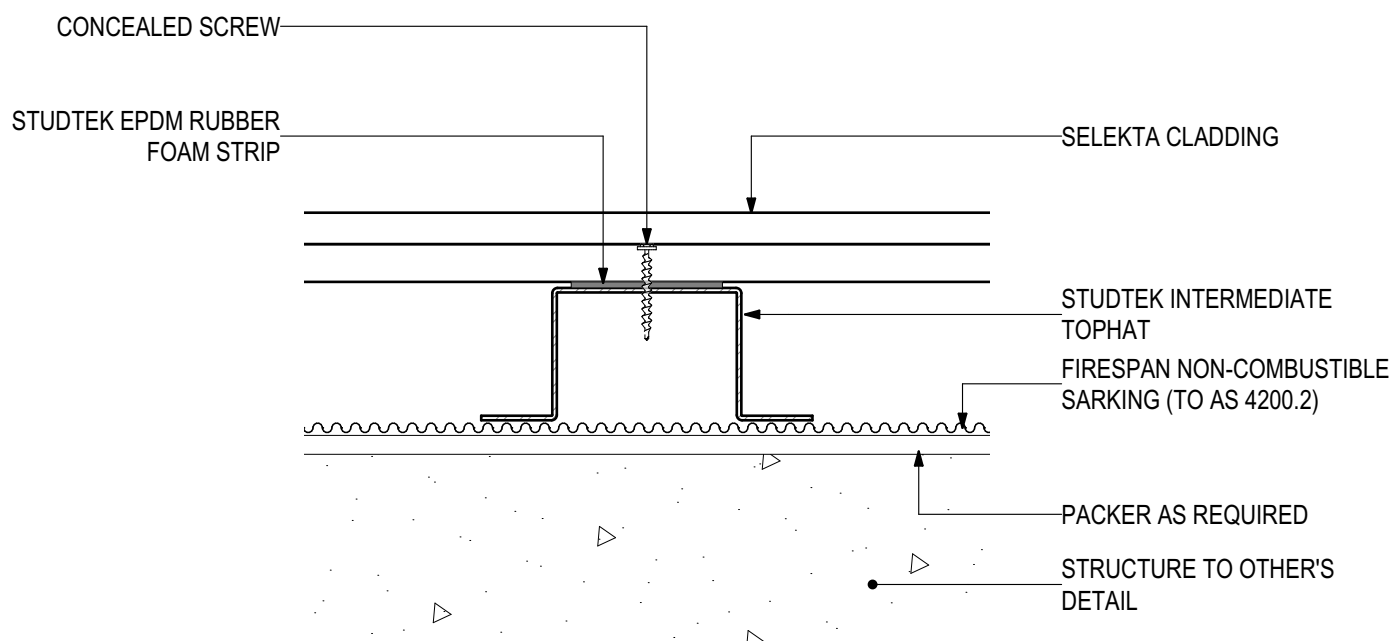


INSTALLATION DETAILS

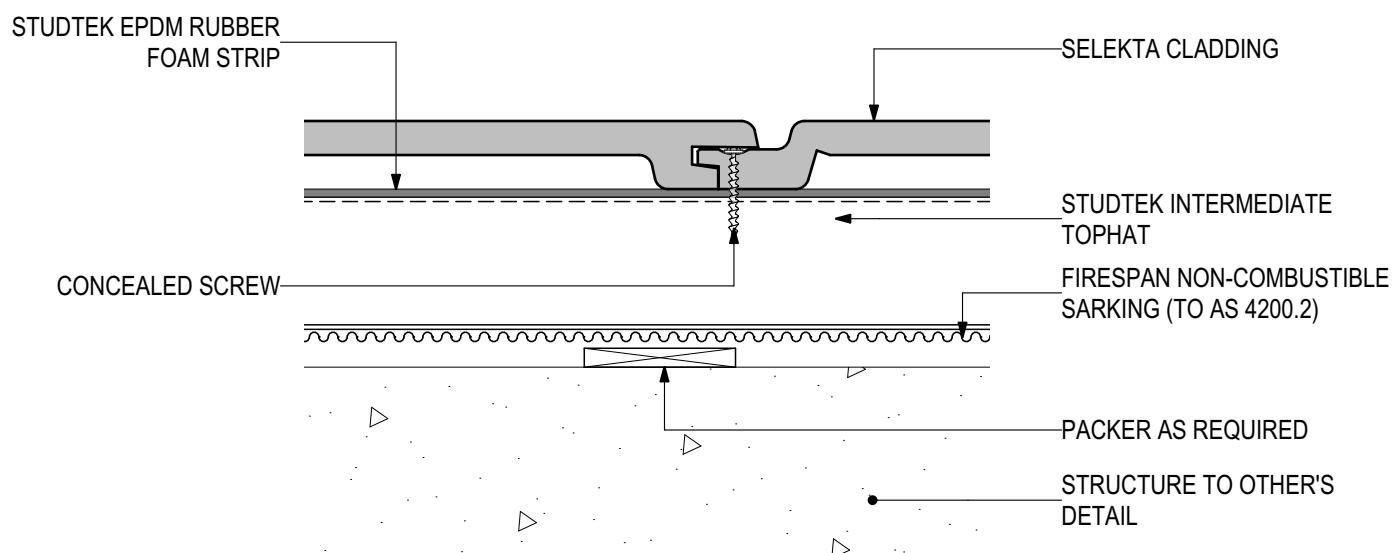
Disclaimer: These details are general design details for use as a guide. Any use is at the user's own discretion and risk. All detailing and installation should be in accordance with all the relevant codes and standards as per current NCC requirements.

Blue Chip Group Pty Ltd
P: 08 9451 2344
F: 08 9451 8983
E: sales@bluechipgroup.net.au

SELEKTA Timber Composite Cladding (V0120) SK-GR-CSF Concealed Screw Fix



HORIZONTAL PANEL ARRANGEMENT



VERTICAL PANEL ARRANGEMENT

D.01 - TYPICAL FIXING DETAILS

SCALE 1:2

Disclaimer: These details are general design details for use as a guide. Any use is at the user's own discretion and risk. All detailing and installation should be in accordance with all the relevant codes and standards as per current NCC requirements.

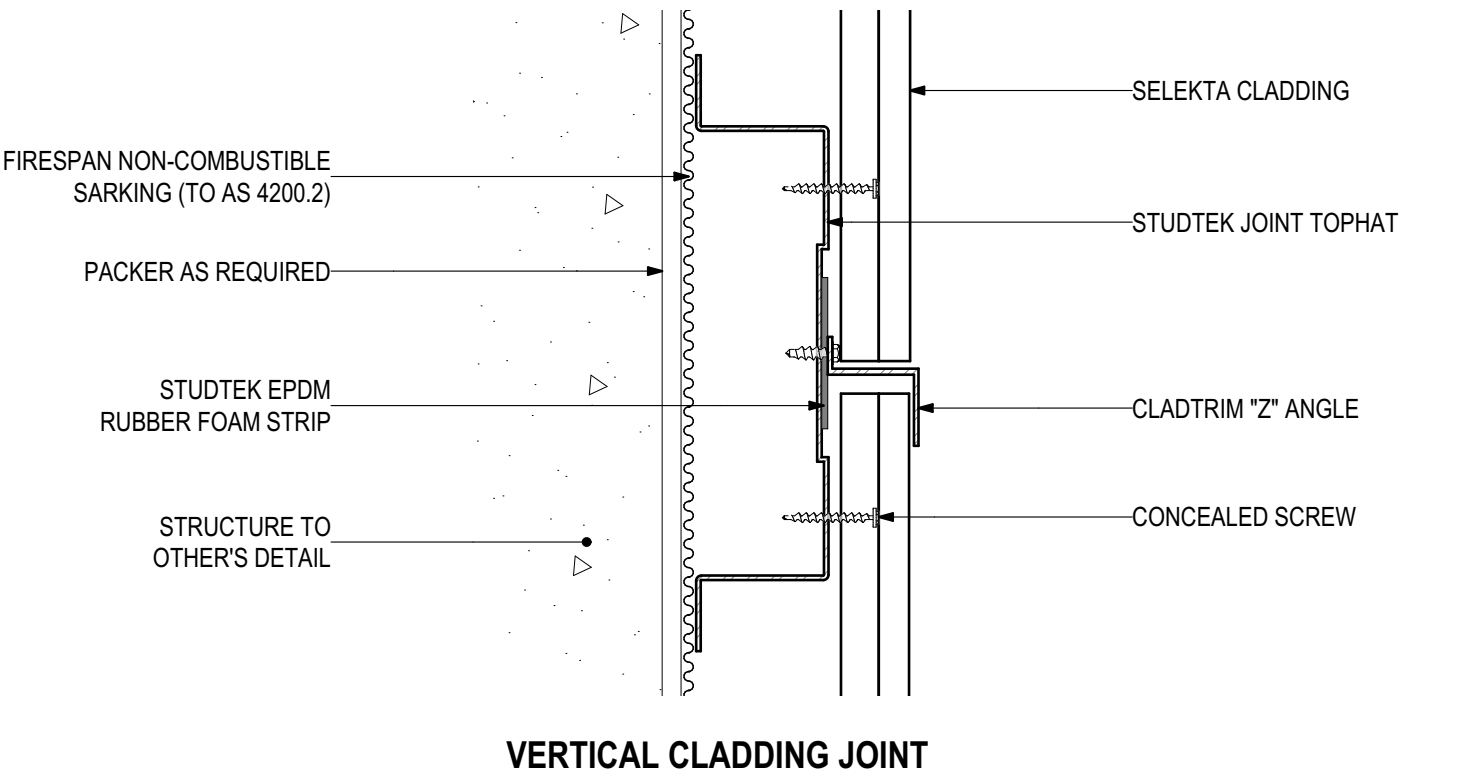
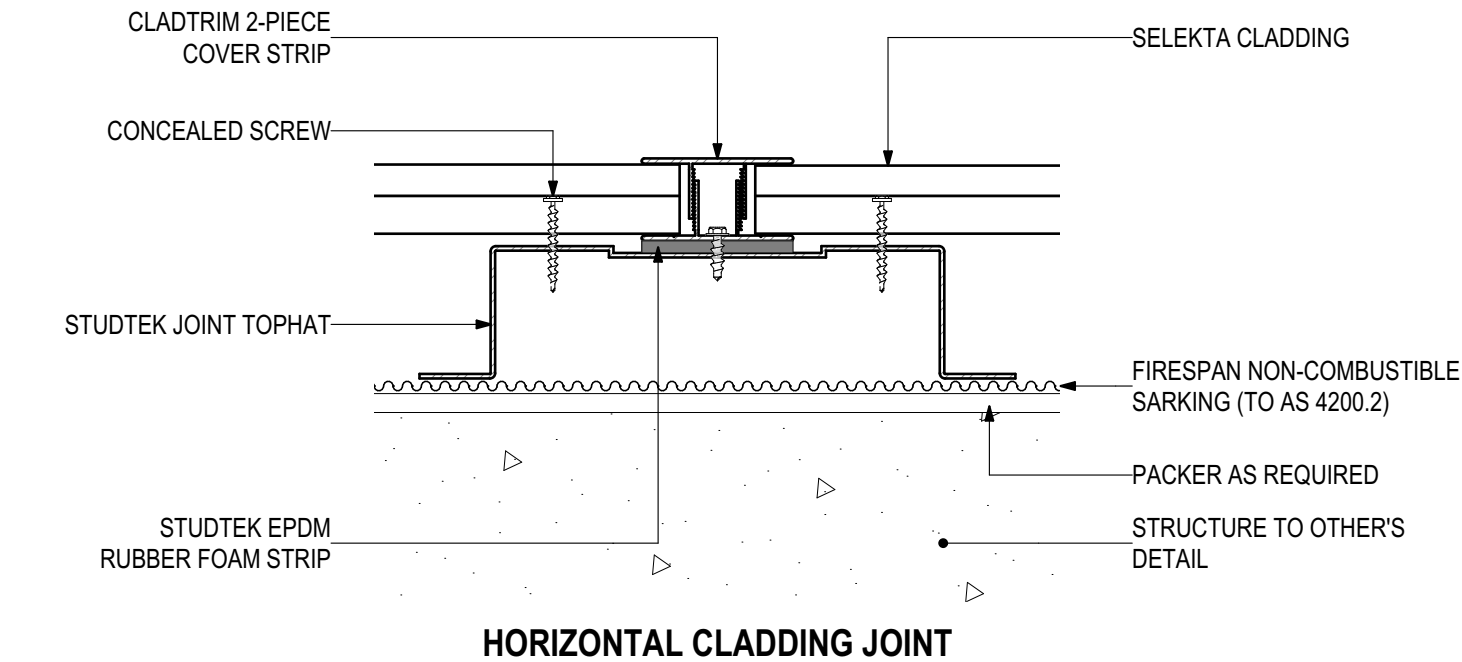
Blue Chip Group Pty Ltd

P: 08 9451 2344

F: 08 9451 8983

E: sales@bluechipgroup.net.au

SELEKTA Timber Composite Cladding (V0120)
SK-GR-CSF Concealed Screw Fix

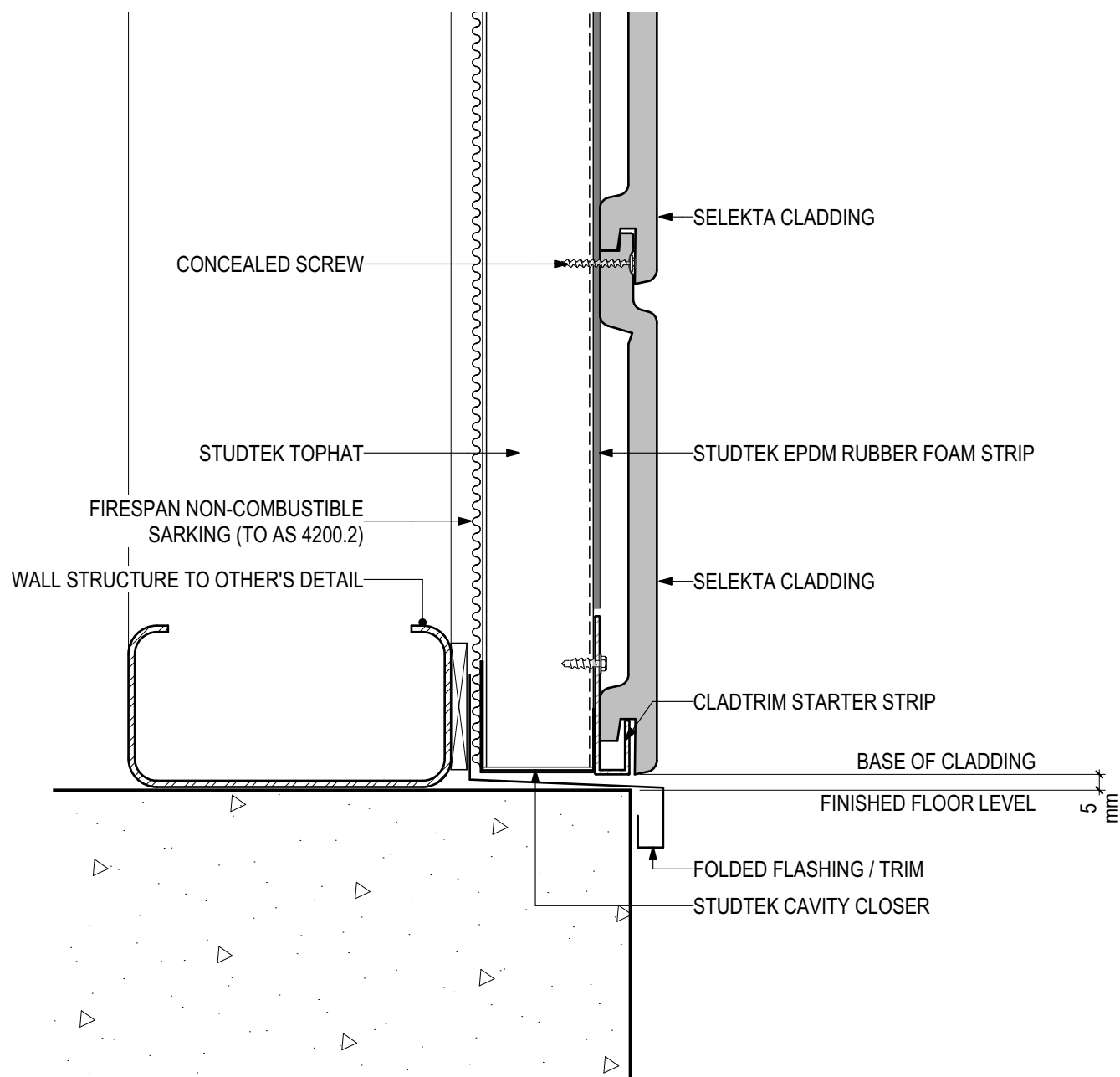


D.02 - JOINT DETAILS
SCALE 1:2

Disclaimer: These details are general design details for use as a guide. Any use is at the user's own discretion and risk. All detailing and installation should be in accordance with all the relevant codes and standards as per current NCC requirements.

Blue Chip Group Pty Ltd
P: 08 9451 2344
F: 08 9451 8983
E: sales@bluechipgroup.net.au

SELEKTA Timber Composite Cladding (V0120)
SK-GR-CSF Concealed Screw Fix

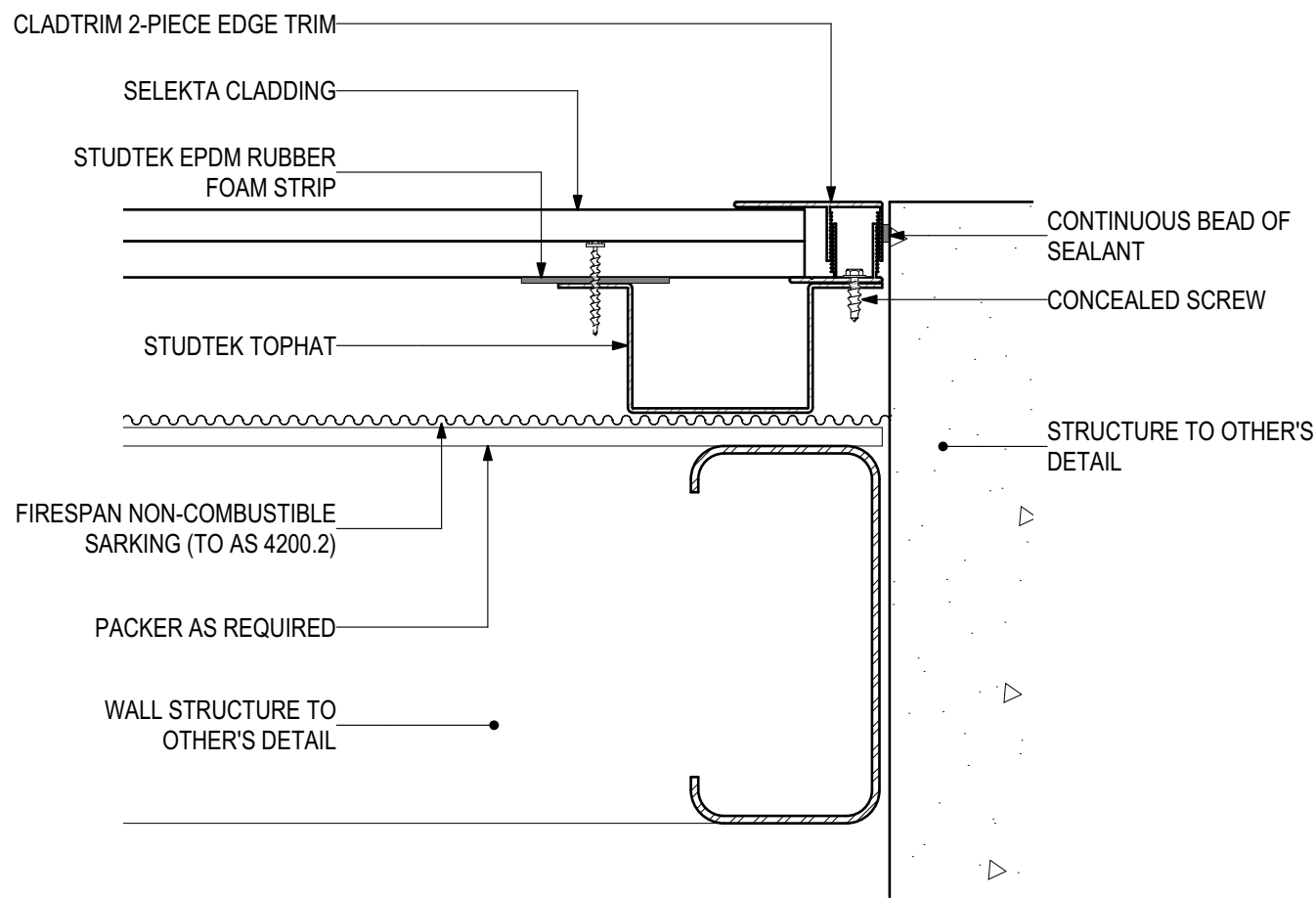


D.03 - BASE DETAIL
SCALE 1:2

Disclaimer: These details are general design details for use as a guide. Any use is at the user's own discretion and risk. All detailing and installation should be in accordance with all the relevant codes and standards as per current NCC requirements.

Blue Chip Group Pty Ltd
P: 08 9451 2344
F: 08 9451 8983
E: sales@bluechipgroup.net.au

SELEKTA Timber Composite Cladding (V0120)
SK-GR-CSF Concealed Screw Fix

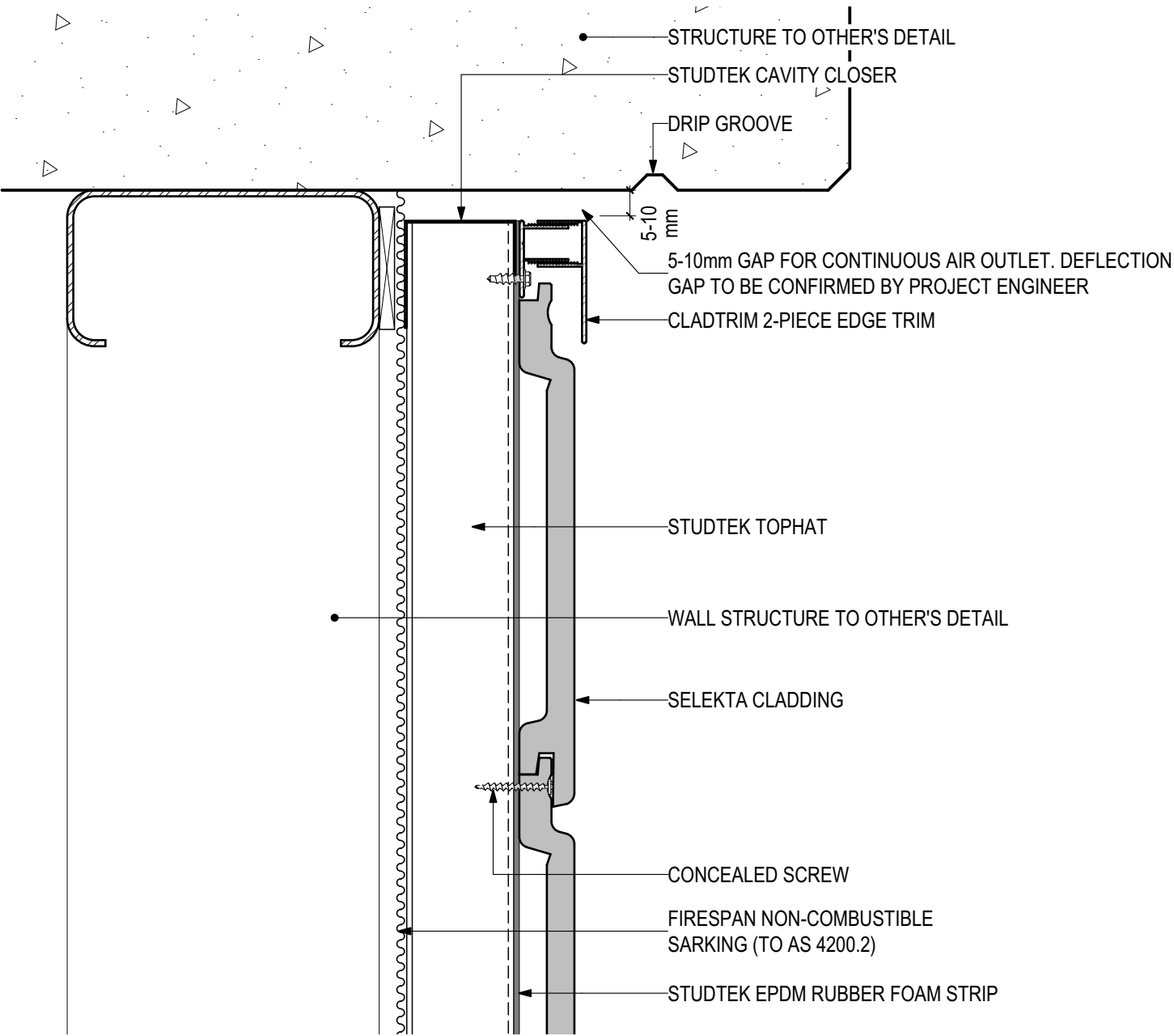


D.04 - WALL ABUTMENT
SCALE 1:2

Disclaimer: These details are general design details for use as a guide. Any use is at the user's own discretion and risk. All detailing and installation should be in accordance with all the relevant codes and standards as per current NCC requirements.

Blue Chip Group Pty Ltd
P: 08 9451 2344
F: 08 9451 8983
E: sales@bluechipgroup.net.au

SELEKTA Timber Composite Cladding (V0120)
SK-GR-CSF Concealed Screw Fix

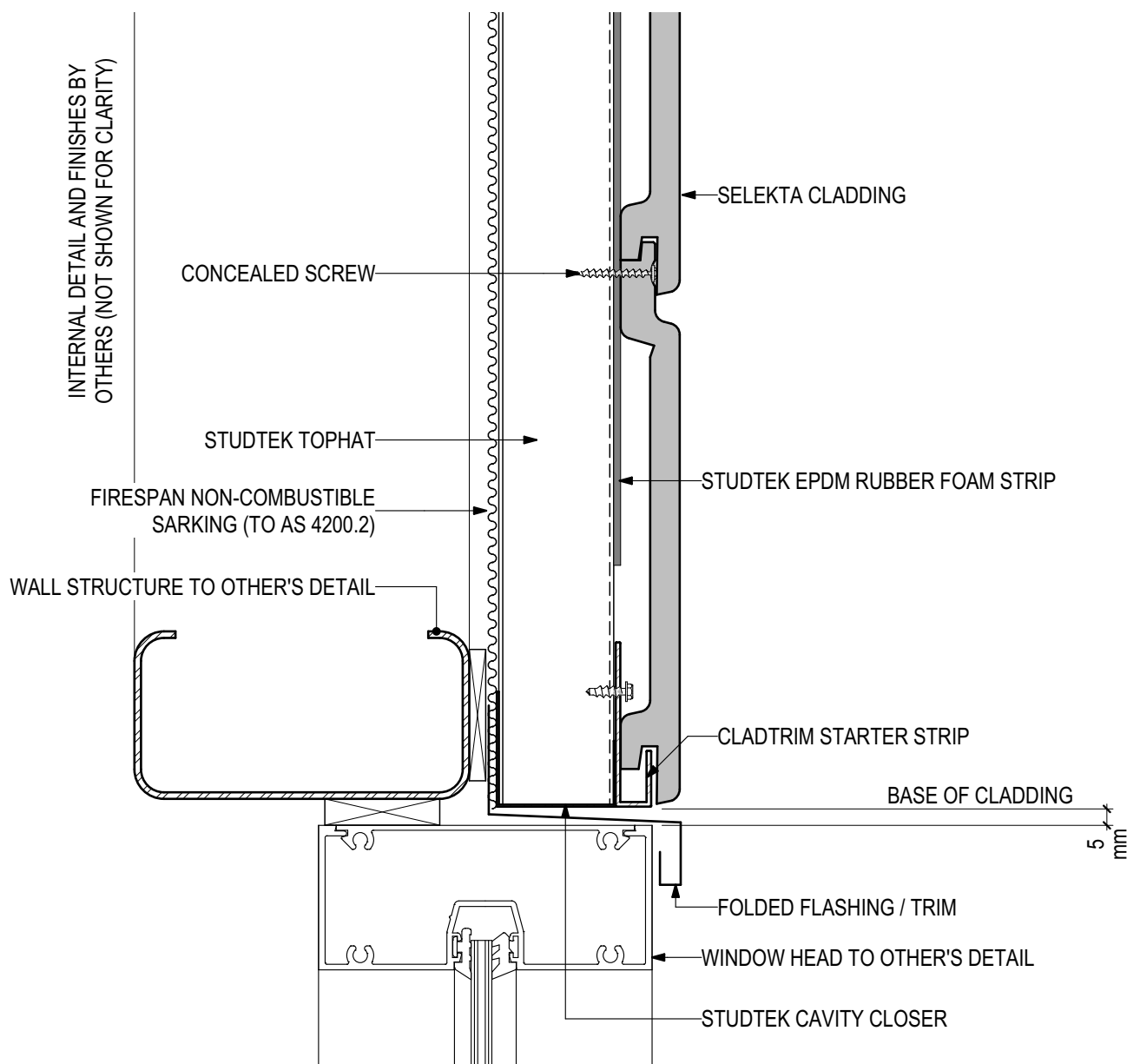


D.05 - HEAD AT SLAB
SCALE 1:2

Disclaimer: These details are general design details for use as a guide. Any use is at the user's own discretion and risk. All detailing and installation should be in accordance with all the relevant codes and standards as per current NCC requirements.

Blue Chip Group Pty Ltd
P: 08 9451 2344
F: 08 9451 8983
E: sales@bluechipgroup.net.au

SELEKTA Timber Composite Cladding (V0120) SK-GR-CSF Concealed Screw Fix



D.06 - WINDOW HEAD

SCALE 1:2

Disclaimer: These details are general design details for use as a guide. Any use is at the user's own discretion and risk. All detailing and installation should be in accordance with all the relevant codes and standards as per current NCC requirements.

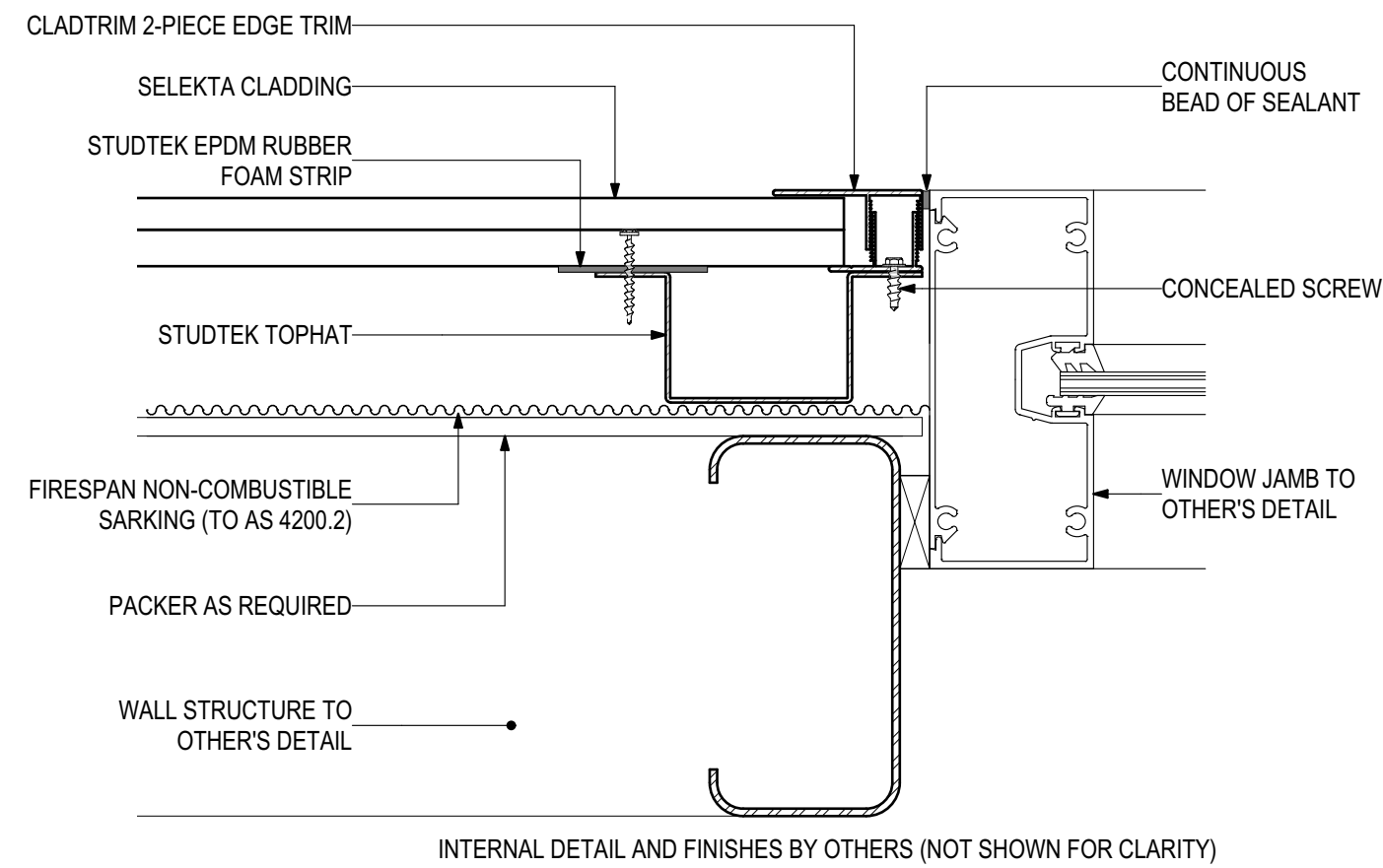
Blue Chip Group Pty Ltd

P: 08 9451 2344

F: 08 9451 8983

E: sales@bluechipgroup.net.au

SELEKTA Timber Composite Cladding (V0120)
SK-GR-CSF Concealed Screw Fix

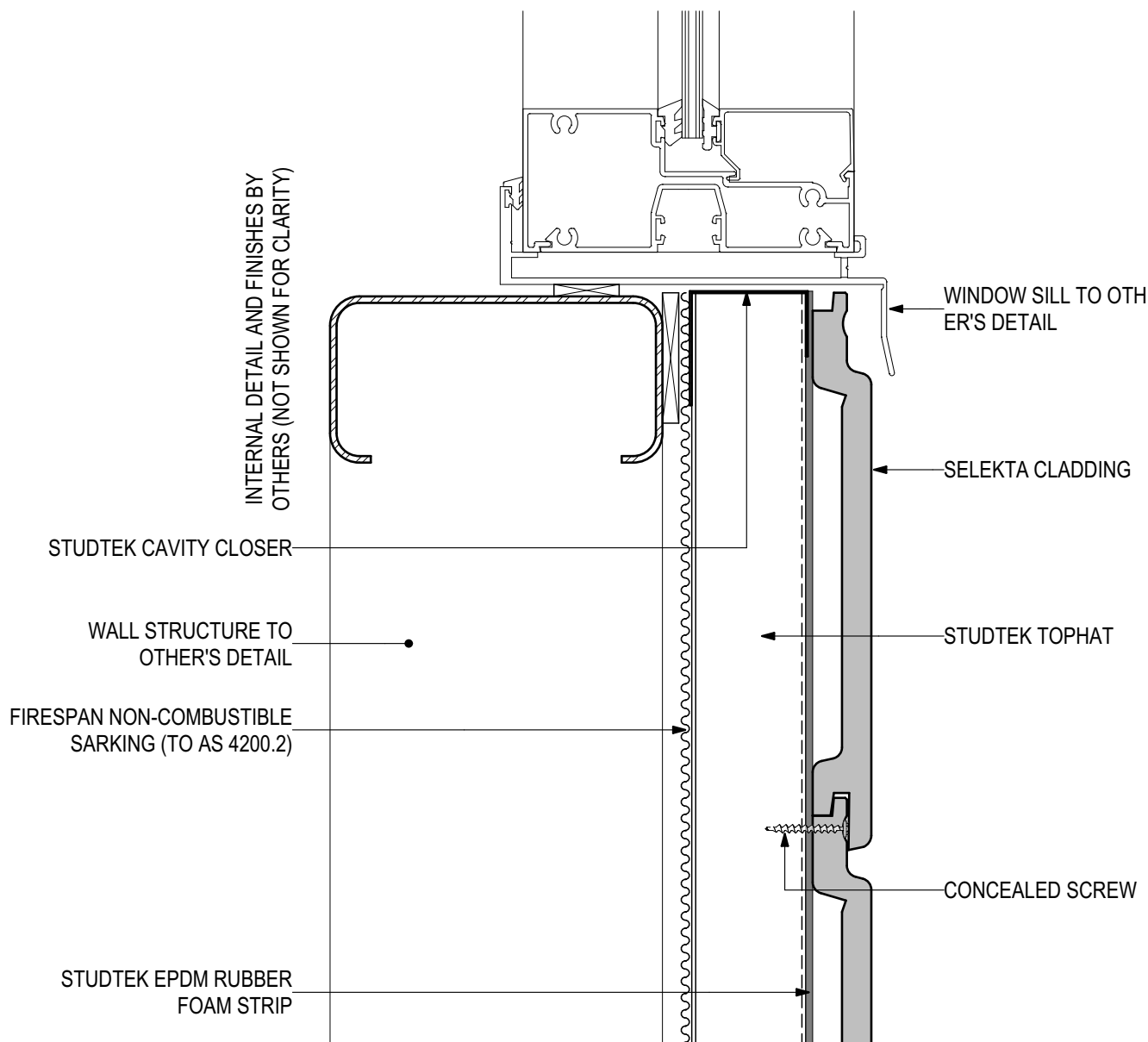


D.07 - WINDOW JAMB
SCALE 1:2

Disclaimer: These details are general design details for use as a guide. Any use is at the user's own discretion and risk. All detailing and installation should be in accordance with all the relevant codes and standards as per current NCC requirements.

Blue Chip Group Pty Ltd
P: 08 9451 2344
F: 08 9451 8983
E: sales@bluechipgroup.net.au

SELEKTA Timber Composite Cladding (V0120)
SK-GR-CSF Concealed Screw Fix

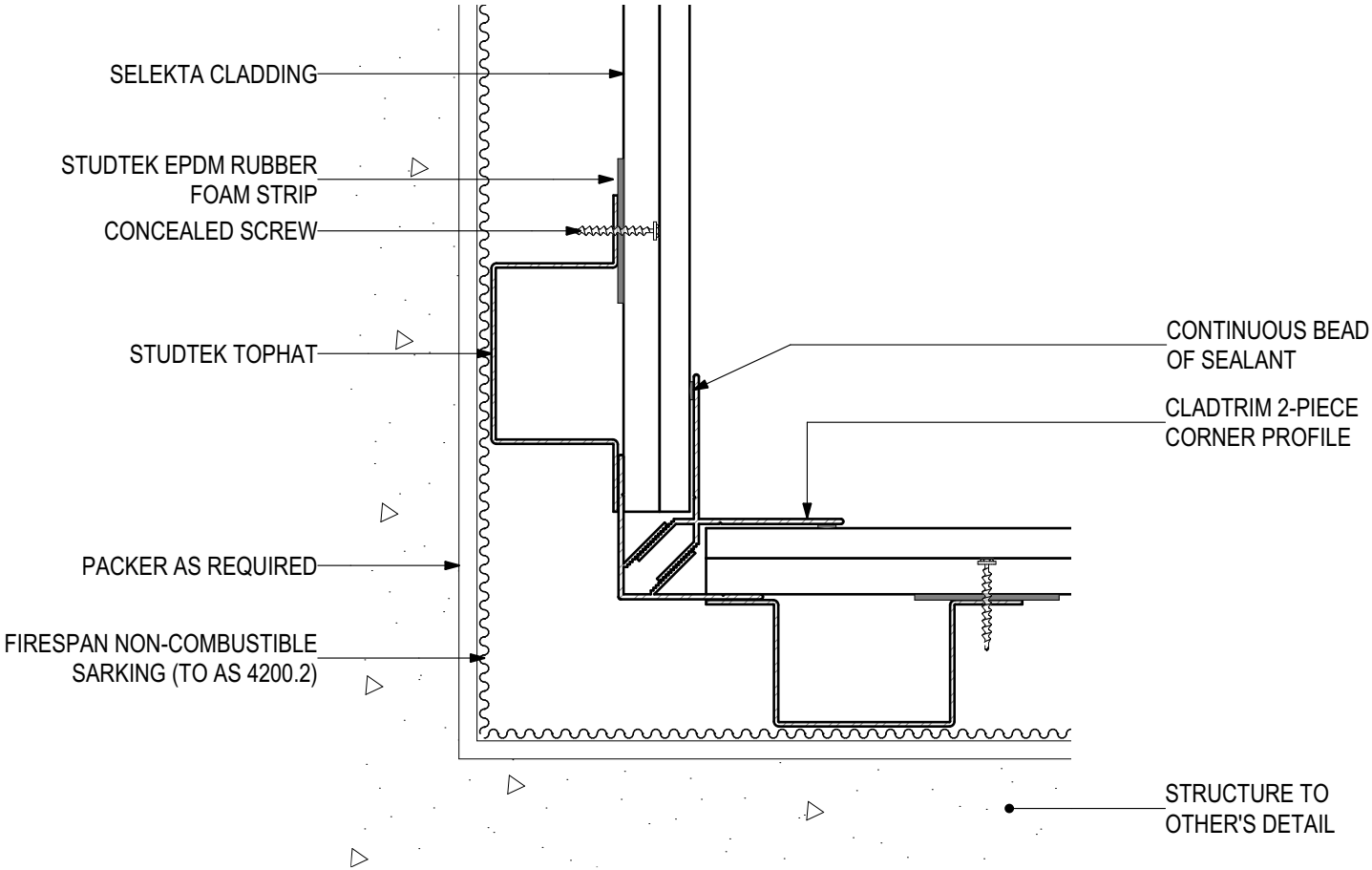


D.08 - WINDOW SILL
SCALE 1:2

Disclaimer: These details are general design details for use as a guide. Any use is at the user's own discretion and risk. All detailing and installation should be in accordance with all the relevant codes and standards as per current NCC requirements.

Blue Chip Group Pty Ltd
P: 08 9451 2344
F: 08 9451 8983
E: sales@bluechipgroup.net.au

SELEKTA Timber Composite Cladding (V0120)
SK-GR-CSF Concealed Screw Fix

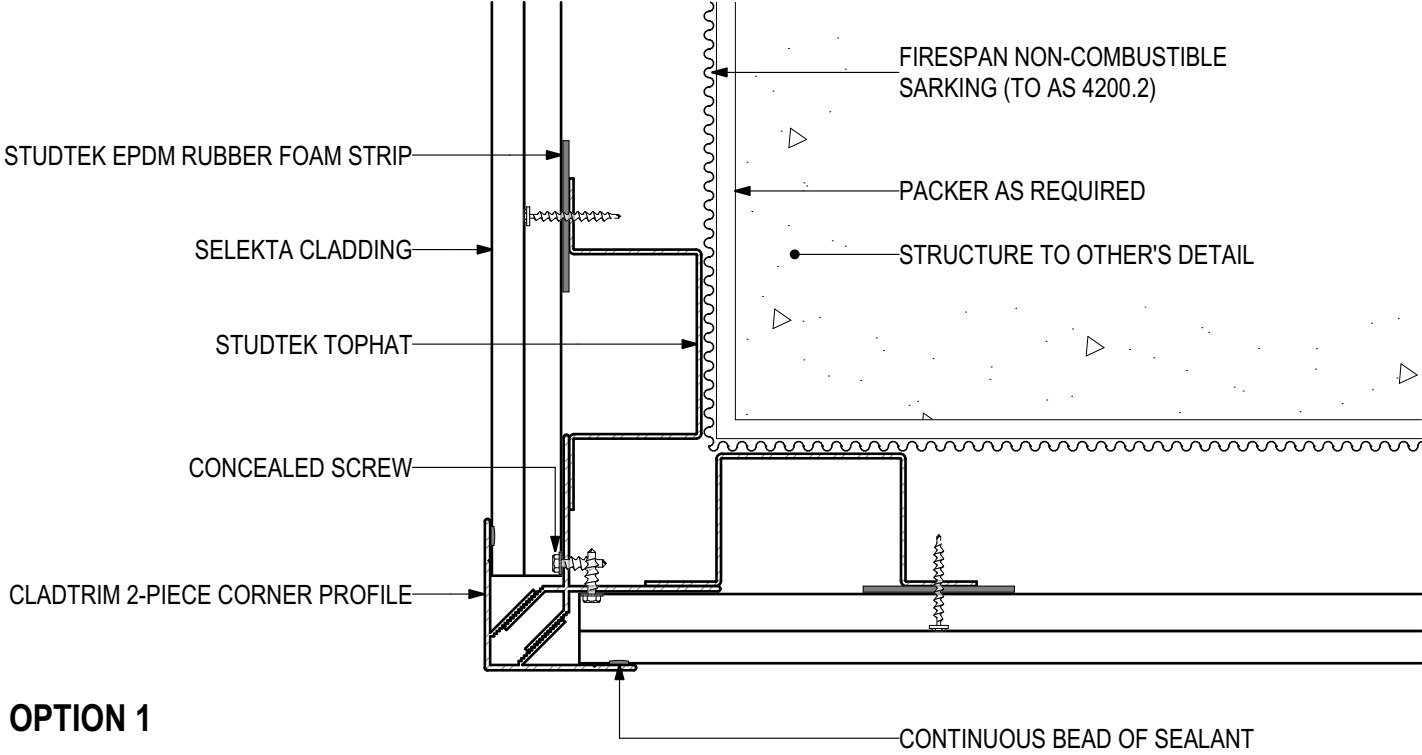


D.09 - INTERNAL CORNER
SCALE 1:2

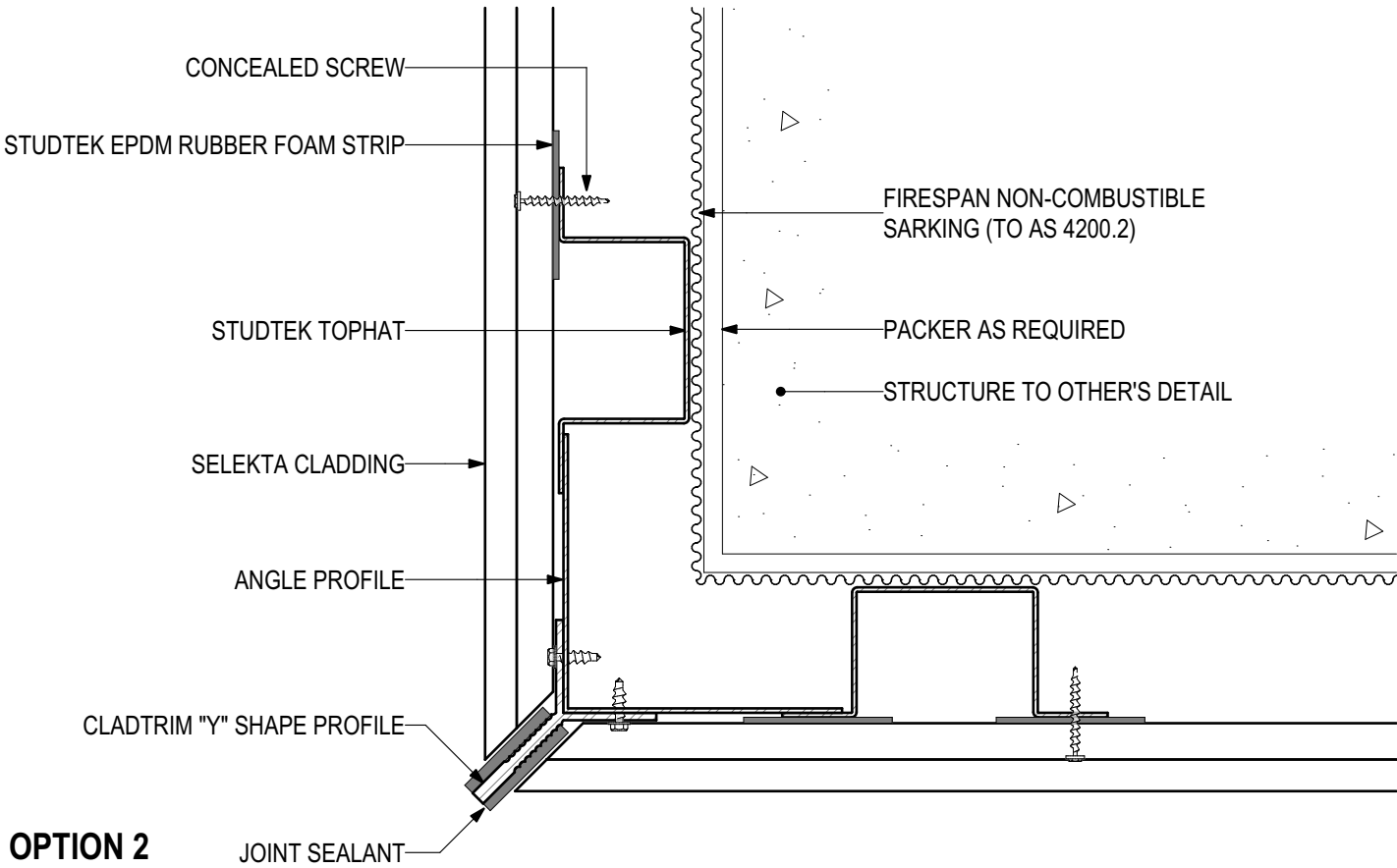
Disclaimer: These details are general design details for use as a guide. Any use is at the user's own discretion and risk. All detailing and installation should be in accordance with all the relevant codes and standards as per current NCC requirements.

Blue Chip Group Pty Ltd
P: 08 9451 2344
F: 08 9451 8983
E: sales@bluechipgroup.net.au

SELEKTA Timber Composite Cladding (V0120)
SK-GR-CSF Concealed Screw Fix



OPTION 1



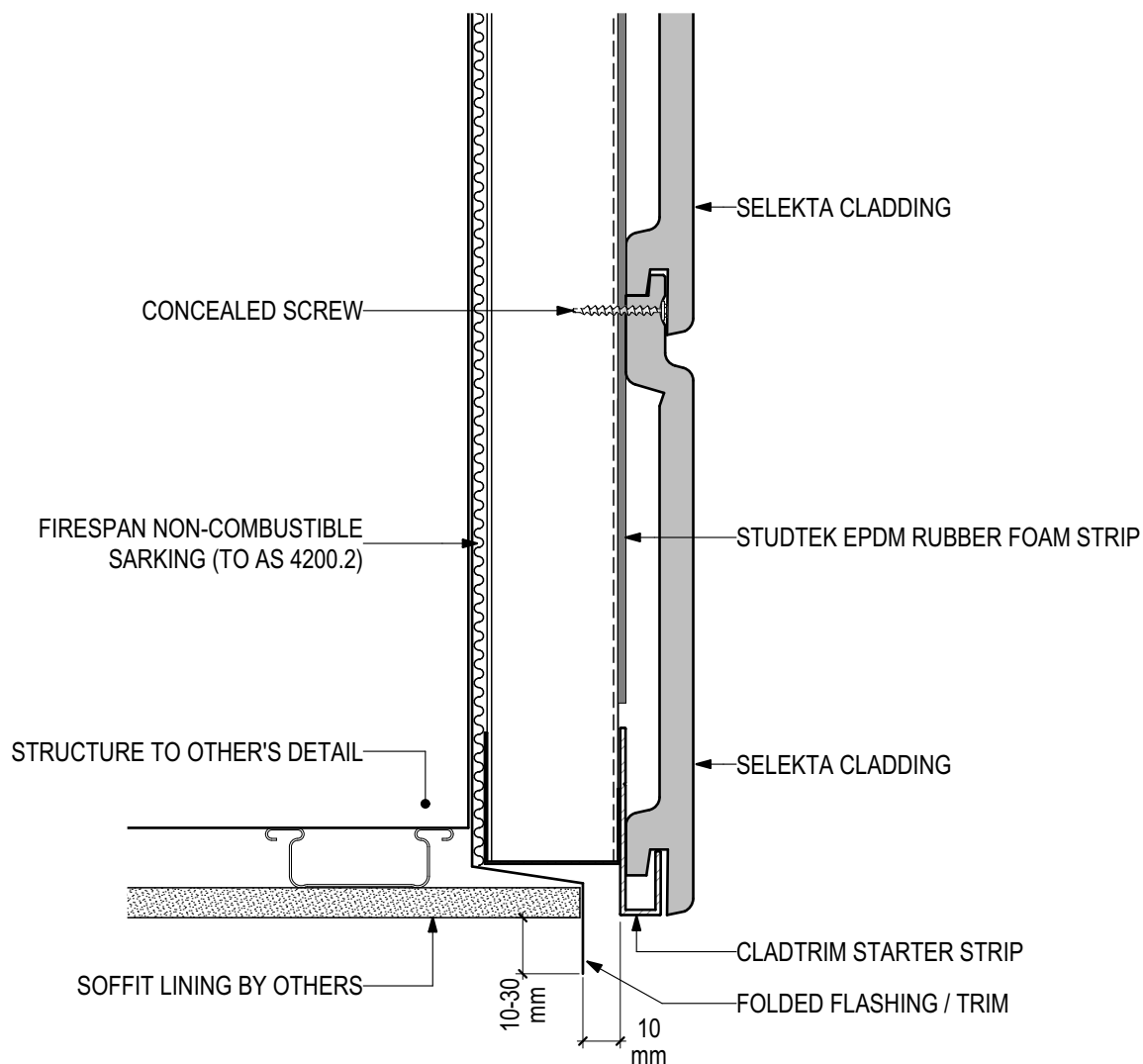
OPTION 2

D.10 - EXTERNAL CORNER
SCALE 1:2

Disclaimer: These details are general design details for use as a guide. Any use is at the user's own discretion and risk. All detailing and installation should be in accordance with all the relevant codes and standards as per current NCC requirements.

Blue Chip Group Pty Ltd
P: 08 9451 2344
F: 08 9451 8983
E: sales@bluechipgroup.net.au

SELEKTA Timber Composite Cladding (V0120) SK-GR-CSF Concealed Screw Fix



D.11 - SOFFIT JUNCTION

SCALE 1:2

Disclaimer: These details are general design details for use as a guide. Any use is at the user's own discretion and risk. All detailing and installation should be in accordance with all the relevant codes and standards as per current NCC requirements.

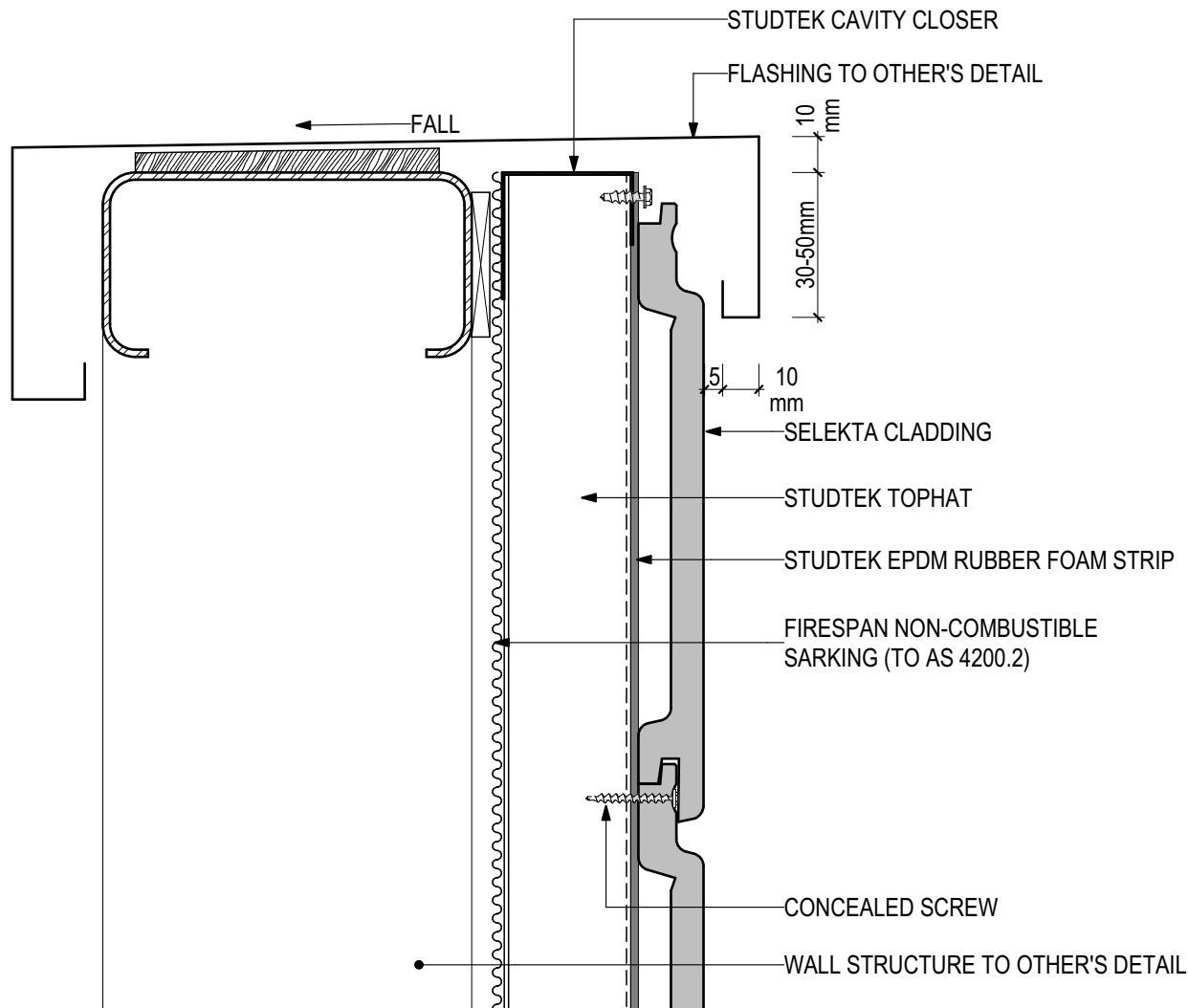
Blue Chip Group Pty Ltd

P: 08 9451 2344

F: 08 9451 8983

E: sales@bluechipgroup.net.au

SELEKTA Timber Composite Cladding (V0120)
SK-GR-CSF Concealed Screw Fix

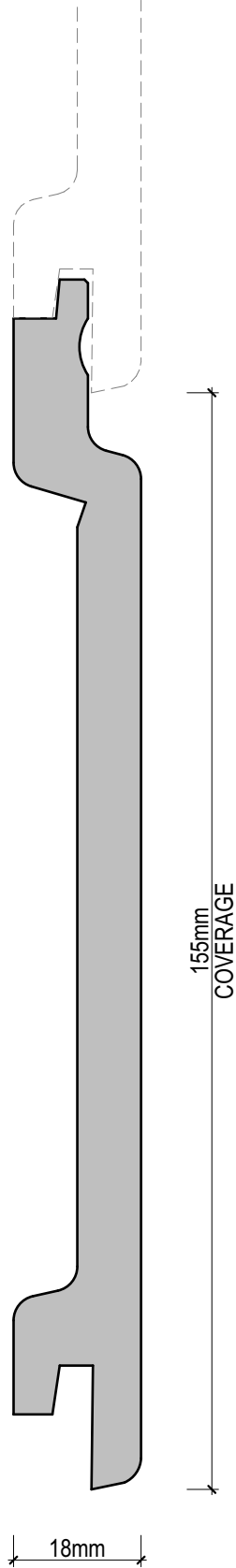


D.12 - PARAPET DETAIL
SCALE 1:2

Disclaimer: These details are general design details for use as a guide. Any use is at the user's own discretion and risk. All detailing and installation should be in accordance with all the relevant codes and standards as per current NCC requirements.

Blue Chip Group Pty Ltd
P: 08 9451 2344
F: 08 9451 8983
E: sales@bluechipgroup.net.au

SELEKTA Timber Composite Cladding (V0120)
SK-GR-CSF Concealed Screw Fix



SELEKTA PROFILE (SK15518)
SCALE 1:1

Disclaimer: These details are general design details for use as a guide. Any use is at the user's own discretion and risk. All detailing and installation should be in accordance with all the relevant codes and standards as per current NCC requirements.

Blue Chip Group Pty Ltd
P: 08 9451 2344
F: 08 9451 8983
E: sales@bluechipgroup.net.au