



BLUECHIP

Timber Cladding

ULTRAWOOD

Battens Brochure

www.bluechipgroup.net.au



ULTRAWOOD

Non-Combustible Timber Battens

Description

ULTRAWOOD non-combustible timber battens are available in a range of profiles providing an inspiring and attractive modern facade option with infinite design possibilities. ULTRAWOOD battens have been specifically designed by experienced commercial facade professionals to meet the demands of today's facade industry. Australian made using the finest raw materials and finish options, ULTRAWOOD battens can be secret-fixed and offer an unprecedented level of quality, safety, and longevity with an extensive range of matt-finish realistic timber colours, available in both standard and custom sizes.

Product Benefits



AS 1530.1 NON-COMBUSTIBLE

ULTRAWOOD products are made of 100% solid aluminium which is totally non-combustible to AS 1530.1. Architects, engineers, and tenants can be assured ULTRAWOOD will not burn or contribute to fire spread.



ENVIRONMENTALLY SUSTAINABLE

ULTRAWOOD solid aluminium is a 100% recyclable product. Energy, emissions, wastage and materials are saved in every aspect of the product from manufacturing, to, delivery, installation and recycling.



2-PIECE INSTALLATION

The ULTRAWOOD batten profiles have been intelligently designed to provide excellent usability such as a simple 2-piece clip-together mounting system with inbuilt screw flutes for secret fixing and structural integrity.



MINIMAL FABRICATION

ULTRAWOOD battens can be ordered to custom lengths which eliminates additional fabrication. The base clip is fixed to the main structure before the battens are simply interlocked together and the end-caps screwed into place.



PREFINISHED SYSTEM

The entire ULTRAWOOD range is pre-finished. This means there is no requirement for painting or onsite finishing. Our finish options are both attractive and durable, providing a protective coating over time.



INCREDIBLE AESTHETICS

ULTRAWOOD battens come in 6 different sizes so architects can mix-and-match and use different lengths for infinite design possibilities. Add a wide range of inspiring and realistic timber finishes and the design options are endless.



100% AUSTRALIAN MADE

ULTRAWOOD is a 100% Australian owned, designed and made product, which contributes to it's outstanding quality and fast lead times. Using ULTRAWOOD aids all aspects of the Australian economy.



CUSTOM DESIGNS

Locally Australian made, ULTRAWOOD battens can be supplied in an almost infinite range of custom sizes, shapes and finishes. Contact us to discuss your unique vision for your next battens project.

INSTALL & TECHNICAL

For installation and technical information, scan the QR code and view 'Downloads' tab.



Profiles



Specification Code: UW*B5050 ULTRAWOOD 50 x 50 Batten



Specification Code: UW*B10050 ULTRAWOOD 100 x 50 Batten



Specification Code: UW*B15050 ULTRAWOOD 150 x 50 Batten



Specification Code: UW*B20050 ULTRAWOOD 200 x 50 Batten



Specification Code: UW*B25050 ULTRAWOOD 250 x 50 Batten



Specification Code: UW*B30050 ULTRAWOOD 300 x 50 Batten

Availability

CODE	DESCRIPTION	LEAD TIME	MOQ
UW*BC65	ULTRAWOOD Batten Base Clip (Insert Colour), 6.5m Length	4-5 Weeks	1 Length
UW*UC65	ULTRAWOOD Batten U-channel (Insert Colour), 6.5m Length	4-5 Weeks	1 Length
UW*B5050	ULTRAWOOD 50 x 50mm Batten (Insert Colour), 6.5m Length	4-5 Weeks	1 Length
UW*B10050	ULTRAWOOD 100 x 50mm Batten (Insert Colour), 6.5m Length	4-5 Weeks	1 Length
UW*B15050	ULTRAWOOD 150 x 50mm Batten (Insert Colour), 6.5m Length	4-5 Weeks	1 Length
UW*B20050	ULTRAWOOD 200 x 50mm Batten (Insert Colour), 6.5m Length	4-5 Weeks	1 Length
UW*B25050	ULTRAWOOD 250 x 50mm Batten (Insert Colour), 6.5m Length	4-5 Weeks	1 Length
UW*B30050	ULTRAWOOD 300 x 50mm Batten (Insert Colour), 6.5m Length	4-5 Weeks	1 Length

Accessories

CODE	DESCRIPTION	LEAD TIME	MOQ
UW*EXXX50	ULTRAWOOD XXX x 50mm End Cap (Insert Colour), 10 Pack	4-5 Weeks	1 Pack
CFM40X	ULTRAFIX 40mm x 8g End Cap Screw (Insert Colour), 100 Pack	3-4 Weeks	1 Pack

*The asterisk in the code denotes the specified type of finish to be applied to the aluminium extrusion as follows:
 U = Ultrawood Timber Colours, A = Anodised Colours and P = Powdercoat Colours.

ULTRAWOOD

Colour Chart

Ultrawood Colours



UW0123
Alabama White

UW0903
Ivory Coast

UW1315
Miry Oak

UW0402
Dusty Balsa

UW2015
Tasmanian Oak

UW1816
Rustic Pine

UW0615
Golden Oak

UW0120
African Teak



UW0813
Honey Maple

UW1907
Banjo Gum

UW0515
English Oak

UW2311
Woodstock

UW0406
Douglas Fir

UW1903
Southern Cyprus

UW0220
Burmese Teak

UW1005
Japanese Elm



UW1540
Dark Cedar

UW1102
Khaya Bean

UW1523
Old Walnut

UW0223
Black Wenge

UW1813
Rich Mahogany

UW1809
Red Iroko

UW1403
Native Cherry

UW2303
West Coast Cedar



UW0302
Coastal Blackwood

UW1120
Kontiki Balsa

UW0103
Alaskan Cedar

UW1703
Queensland Cedar

UW1510
Meranti

UW2203
Vancouver Cedar

UW0318
Californian Redwood

UW2503
Yukon Cedar



UW1410
Nannup Jarrah

UW0202
Bowral Bluegum

UW1311
Manjimup Karri

UW1580
African Ebony

Material Colours



UL0102
Authentic Brushed

UL0116
Authentic Polished

UL0114
Authentic Natural

UL0318
Coral Rust

UL1914
Scintillation

UL2118
Uluru Rust

UL0418
Dark Rust

UL2116
Uluru Polished



UL2114
Uluru Natural

UL0202
Bronze Brushed

UL1502
Ochre Brushed

UL1514
Ochre Natural

MURDOCH HEALTH PRECINCT

Architect Hassell Studio (WA)

Builder Multiplex

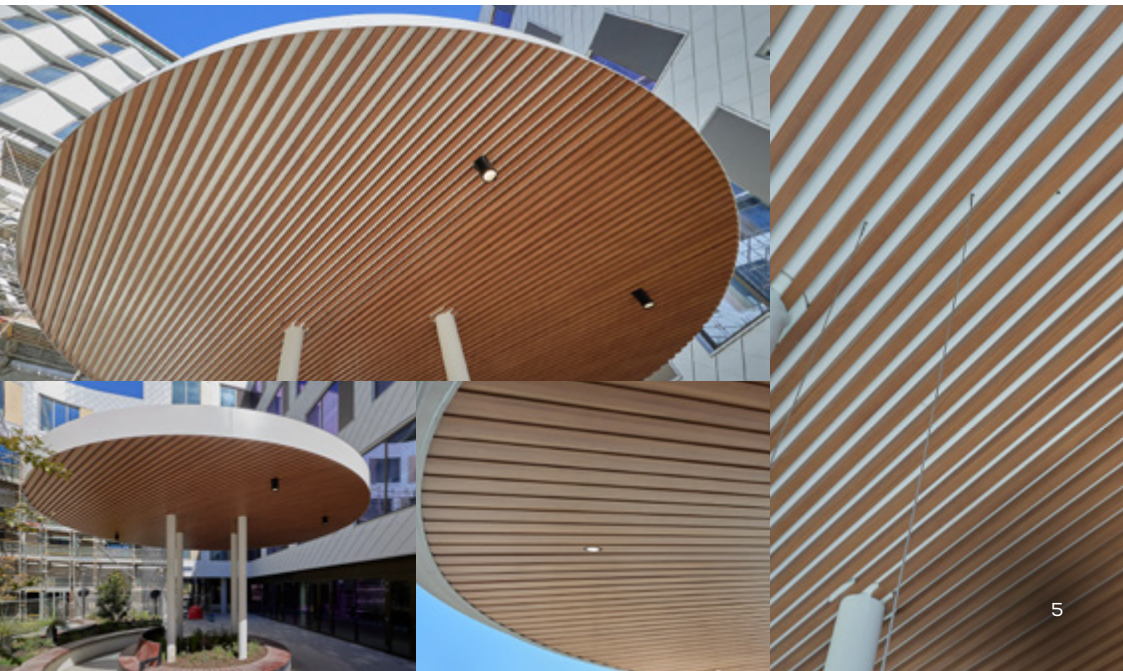
Address Kwinana Freeway & Lot 118 South Street, Murdoch WA 6150

Product ULTRAWOOD 50 x 50mm Batten

Colour



UW0515
English Oak



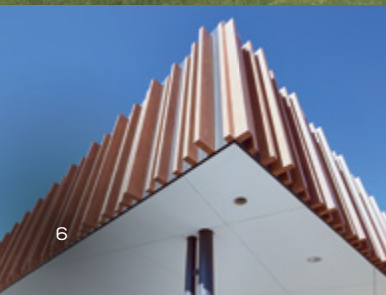
ULTRAWOOD

TREEBY COMMUNITY CENTRE

- Architect** Hodge Collard Preston Architects Pty Ltd
- Builder** McCorkell Constructions WA
- Address** Corner Torwood Avenue & Clementine Boulevard,
Treeby WA 6164
- Product** ULTRAWOOD 50 x 50mm Batten
ULTRAWOOD 100 x 50mm Batten
ULTRAWOOD 150 x 50mm Batten
- Colour**



UW1540 Dark Cedar



WATERTOWN OUTLET CENTRE

Architect Hames Sharley
Builder Hoskins
Address 840 Wellington St, West Perth WA 6005
Product ULTRAWOOD 50 x 50mm Batten
ULTRAWOOD 100 x 50mm Batten
ULTRAWOOD 150 x 50mm Batten
ULTRAWOOD 250 x 50mm Batten

Colour



UW1315 Miry Oak



ULTRAWOOD

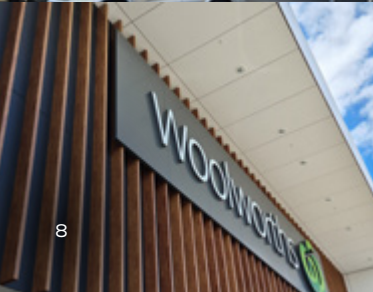
MIDVALE CENTRAL

Architect i2C Design & Management
Builder Built
Address 227 Morrison Road, Midvale WA 6056
Product ULTRAWOOD 50 x 50mm Batten
 ULTRAWOOD 100 x 50mm Batten
 ULTRAWOOD 150 x 50mm Batten

Colour



UW1540 Dark Cedar



SADKA LANE, SHENTON PARK

Architect Weststyle

Builder Weststyle

Address Sadka Lane, Shenton Park WA 6008

Product ULTRAWOOD 100mm x 50mm Batten

Colour



UW0515
English Oak





We've Got It Covered



V1124



Blue Chip Group Pty Ltd

SYDNEY | MELBOURNE | BRISBANE | PERTH | ADELAIDE

P 1300 945 123

E sales@bluechipgroup.net.au

www.bluechipgroup.net.au

DISCLAIMER No information or advice contained in this publication is binding in any way shape or form and is provided on a without prejudice basis. All photographs and colour swatches are indicative only. All dimensions are nominal and all product data and specifications are subject to change without notice. All pricing, sales, communications and transactions are subject to Blue Chip Group's terms of trading which are available on request.