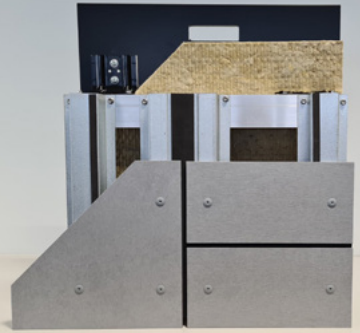




BLUECHIP

Facade Systems

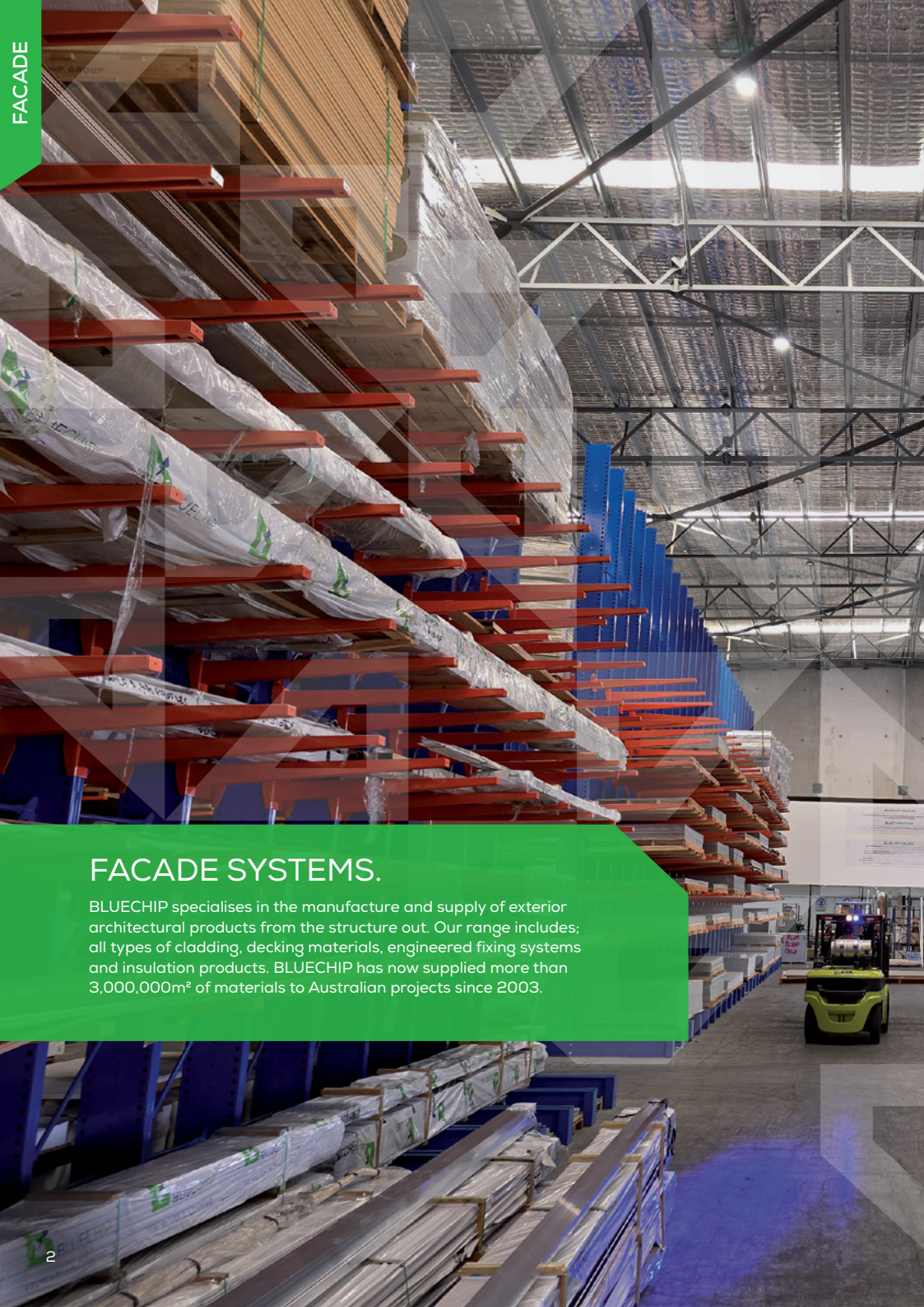


## Facade Systems



[www.bluechipgroup.net.au](http://www.bluechipgroup.net.au)





## FACADE SYSTEMS.

BLUECHIP specialises in the manufacture and supply of exterior architectural products from the structure out. Our range includes; all types of cladding, decking materials, engineered fixing systems and insulation products. BLUECHIP has now supplied more than 3,000,000m<sup>2</sup> of materials to Australian projects since 2003.



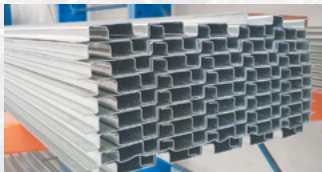
# FACADE SYSTEMS



4

**BICEP**

Ventilated Facade System



6

**STUDTEK**

Steel Top-hats & Framing



8

**CLADTRIM**

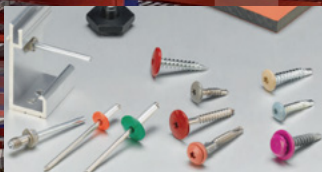
Colour-matched  
Cladding Trims



10

**ULTRAFIX**

Extrusions for Aluminium  
Cassette-Fix Panels



12

**EUROFIX**

Specialised Cladding Fixings



14

**PROLASTIK**

Facade Joint Sealant

# BICEP

## Ventilated Facade System

### Description

The BICEP ventilated facade system includes brackets, rails and secret fixing options offering exceptional versatility in both vertical and horizontal configuration. Available in aluminium (AL), coated steel (CS) or stainless steel (SS) for different applications, the BICEP facade system provides excellent usability and unrivalled structural strength resulting in a cost-effective ventilated facade system ideal for suspending all cladding types. An added benefit is that the BICEP brackets can be thermally broken and supplied in conjunction with IROCK insulation and ULTRAPERM membrane for a fully integrated solution.

### Product Benefits



#### NON-COMBUSTIBLE

Made wholly of aluminium (AL), coated steel (CS) or stainless steel (SS) the BICEP ventilated facade system is deemed-to-satisfy non-combustible in accordance with NCC 2022, Clauses C2D10(4)(f)(ii), C2D10(5) and C2D10(6)(e).



#### ENGINEERING SUPPORT

The BICEP ventilated facade system is supported by proprietary structural engineering software to assist in the design and specification of facades in all applications and locations with all different loads as required.



#### A COMPLETE SYSTEM

The BICEP Ventilated Facade System has been designed as a complete solution which along with IROCK insulation and ULTRAPERM membrane, provides a complete system achieving the required structural, thermal and weatherproofing outcomes.



#### FROM THE STRUCTURE OUT

Our company slogan, from the structure out, we've got it covered! The BICEP system along with STUDETEK, IROCK, ULTRAPERM and our wide range of cladding materials means you can specify the entire facade from one local supplier.



#### ALL CLADDING TYPES

As one of Australia's largest architectural cladding suppliers, we are in the ideal position to design a compliant ventilated facade system that suits all different possible cladding types and applications. BICEP is this system.



#### VENTILATION BENEFITS

Used in Europe and the Americas for many years, ventilated facade systems like BICEP offer many benefits and advantages over traditional sealed facades - superior energy efficiency, weatherproofing and building durability.



#### UNRIVALLED VERSATILITY

With excellent ease of use in both vertical and horizontal configuration and bracket sizes from 40mm up to 900mm, BICEP is also available in aluminium (AL), coated steel (CS) or stainless steel (SS) for unrivalled versatility.

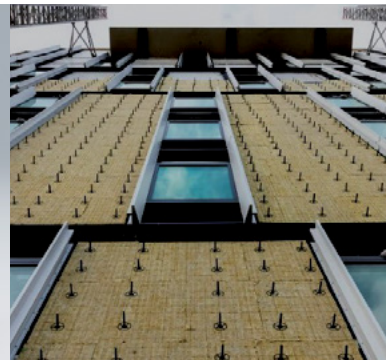
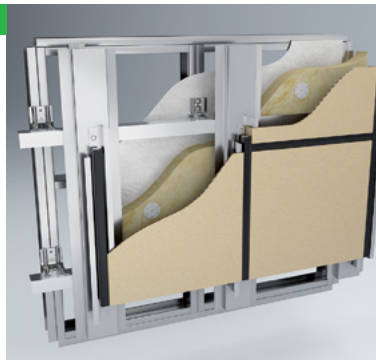


#### EXCELLENT VALUE

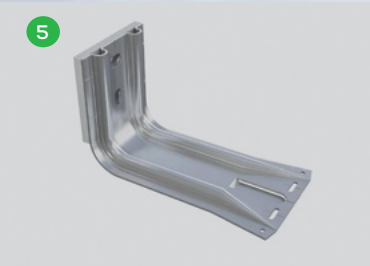
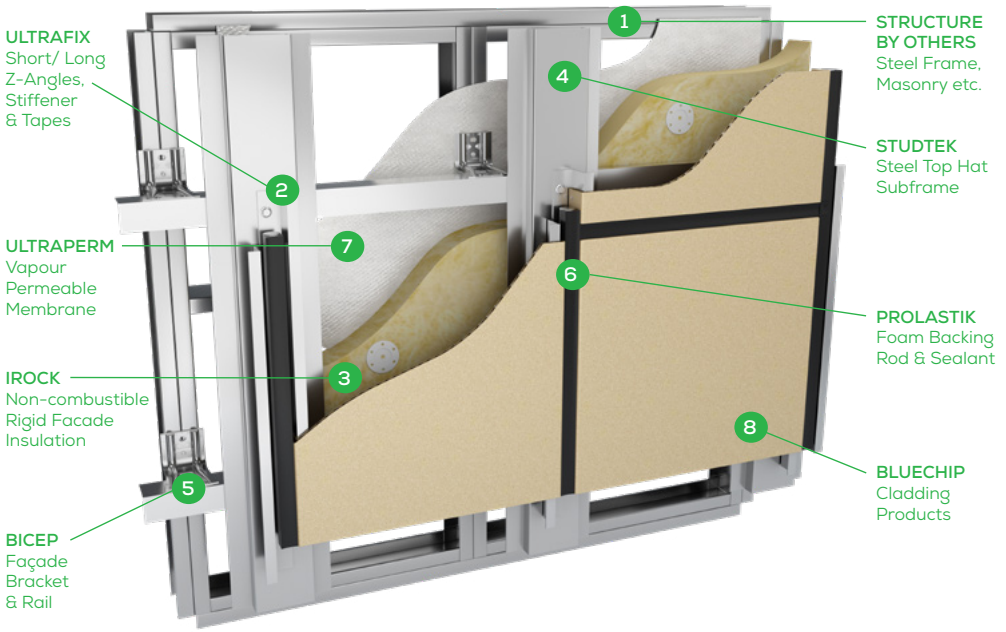
The incredible strength of the patented BICEP bracket design (meaning less are required) along with manufacturer to industry direct supply chain means the BICEP system can offer exceptional value-for-money to building owners.

### INSTALL & TECHNICAL

For installation and technical information, scan the QR code and view 'Downloads' tab.



# The Complete System

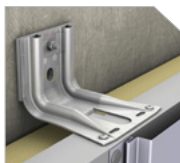




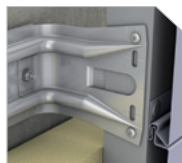
# BICEP

## Ventilated Facade System

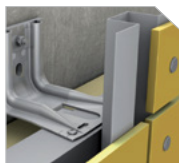
### Product Range



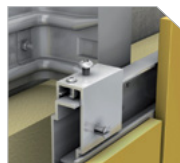
BICEP BRACKET +  
Horizontal L-profile



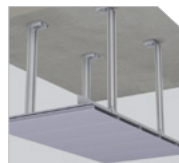
BICEP BRACKET +  
Vertical L-profile



BICEP HORIZONTAL +  
Visible Fix System



BICEP VERTICAL +  
Concealed Fix System



BICEP BRACKET +  
Ceiling Application

### Bicep Aluminium Facade Brackets

CODE	DESCRIPTION	LEAD TIME	MOQ
BCBA40	BICEP (AL) 40mm Aluminium Bracket & Thermal Stop*	3-4 Weeks	100 Brackets
BCBA65	BICEP (AL) 65mm Aluminium Bracket & Thermal Stop*	Stock	1 Bracket
BCBA85	BICEP (AL) 85mm Aluminium Bracket & Thermal Stop*	Stock	1 Bracket
BCBA110	BICEP (AL) 110mm Aluminium Bracket & Thermal Stop*	3-4 Weeks	75 Brackets
BCBA135	BICEP (AL) 135mm Aluminium Bracket & Thermal Stop*	3-4 Weeks	50 Brackets
BCBA***	BICEP (AL) 135 - 900mm Aluminium Bracket & Thermal Stop*	3-4 Weeks	50 Brackets

### Bicep Coated Steel Facade Brackets

CODE	DESCRIPTION	LEAD TIME	MOQ
BCBC65	BICEP (CS) 65mm Coated Steel Bracket & Thermal Stop*	3-4 Weeks	85 Brackets
BCBC85	BICEP (CS) 85mm Coated Steel Bracket & Thermal Stop*	3-4 Weeks	75 Brackets
BCBC110	BICEP (CS) 110mm Coated Steel Bracket & Thermal Stop*	3-4 Weeks	75 Brackets
BCBC135	BICEP (CS) 135mm Coated Steel Bracket & Thermal Stop*	3-4 Weeks	50 Brackets
BCBC***	BICEP (CS) 135 - 900mm Coated Steel Bracket & Thermal Stop*	3-4 Weeks	50 Brackets

### Bicep Stainless Steel Facade Brackets

CODE	DESCRIPTION	LEAD TIME	MOQ
BCBS65	BICEP (SS) 65mm Stainless Bracket & Thermal Stop*	3-4 Weeks	85 Brackets
BCBS85	BICEP (SS) 85mm Stainless Bracket & Thermal Stop*	3-4 Weeks	75 Brackets
BCBS110	BICEP (SS) 110mm Stainless Bracket & Thermal Stop*	3-4 Weeks	75 Brackets
BCBS135	BICEP (SS) 135mm Stainless Bracket & Thermal Stop*	3-4 Weeks	50 Brackets
BCBS***	BICEP (SS) 135 - 600mm Stainless Bracket & Thermal Stop*	3-4 Weeks	50 Brackets

## Bicep Support Profiles & Accessories

CODE	DESCRIPTION	LEAD TIME	MOQ
BCLA6060	BICEP (AL) 60 x 40mm Aluminium L-profile, 6.0m Length	Stock	1 Length
BCTA10060	BICEP (AL) 100 x 40mm Aluminium T-profile, 6.0m Length	Stock	1 Length
BCLC6060	BICEP (CS) 60 x 40mm Coated Steel L-profile, 6.0m Length	Stock	1 Length
BCUPP9	BICEP Universal Pressure Plate with 9mm Hole	Stock	1 Plate
BCTBS6	BICEP 6mm Thermal Break Spacer (R0.2 with Bracket)*	Stock	1 Spacer

## Bicep Aluminium Concealed Fix Rail & Hanger System



BCCFR\*\*  
Carrier Rail



BCCFH\*  
Hanger

CODE	DESCRIPTION	LEAD TIME	MOQ
BCCFR30	BICEP (AL) Concealed Fix Carrier Rail, 3.0m Length	3-4 Weeks	50 Lengths
BCCFR60	BICEP (AL) Concealed Fix Carrier Rail, 6.0m Length	10-12 Weeks	50 Lengths
BCCFHS	BICEP (AL) Concealed Fix Static Hanger	3-4 Weeks	1 Hanger
BCCFHA	BICEP (AL) Concealed Fix Adjustable Hanger	3-4 Weeks	1 Hanger
BCCFHAS	BICEP Concealed Fix Hanger Adjustment Screw, 100 Pack	3-4 Weeks	1 Pack

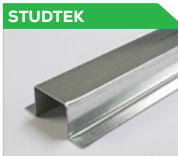
## System Components



AS 1530.1 Insulation



Class 4 Membrane



Steel Top-hats



Concealed Anchors

\*NCC 2022 Section J, Clause J3D6 requires thermal breaks in building envelopes to achieve an R-value of not less than R0.2. To achieve this the BICEP façade brackets with built-in thermal stop (6mm thick R0.1), are installed in combination with the BCTBS6 Thermal Break Spacer (6mm thick R0.1, see accessories) to achieve the required total of R0.2 for section J compliance.

# STUDETEK

## Steel Top-hat Framing System

### Description

STUDETEK is a complete range of roll-formed steel sub-frame profiles designed for use with all types of cladding products. Including all different sizes of common profiles such as top-hats, c-channels and angles, STUDTEK also provides a highly versatile ventilated facade system which is widely used for installing many different cladding panels such as through-colour fibre cement, high-pressure laminate and 9mm CFC. Supplied with all the required accessories such as backing strips, cavity closers and foam gaskets for weatherproofing, the STUDTEK facade system is manufactured from zinc-coated steel in accordance with ISO 9001 for long-term durability.

### Product Benefits



#### NON-COMBUSTIBLE

Made of 100% steel, STUDTEK steel cladding framing is deemed-to-satisfy non-combustible in accordance with NCC 2022, Clause C2D10(5)(b). STUDTEK foam gaskets and packers also comply with Clauses C2D10(4)(a) & C2D10(4)(i)(i).



#### BACK-TO-BACK WARRANTY

When you specify STUDTEK steel cladding framing with one of our many cladding products, we can offer additional peace-of-mind by providing a back-to-back warranty covering the complete system all from one supplier.



#### ZINC DURABILITY

Manufactured from high-grade zinc-coated steel, the STUDTEK facade system offers superior corrosion resistance and durability compared to common galvanised steel especially in coastal and marine environments.



#### A COMPLETE SYSTEM

Along with the STUDTEK steel cladding framing and accessories such as backing strips, foam gaskets and cavity closers, we can also supply; BICEP facade brackets, IROCK insulation and ULTRAPERM membrane for the complete system.



#### ISO 9001 ASSURANCE

Roll-formed using the latest state-of-the-art computer controlled (CNC) machines in accordance with ISO 9001, you can be assured that all STUDTEK steel cladding framing conforms with exacting dimensional tolerances.



#### ALL CLADDING TYPES

As one of Australia's largest cladding suppliers, we are in the ideal position to design and supply compatible sub-frame systems. From high-spec architectural facades to common commodity cladding, STUDTEK has all bases covered.



#### IMPROVED STRENGTH

Not content with the common industry standard of 1.15BMT, key profiles in the STUDTEK range are made from stronger 1.20BMT steel to exceed normal engineering expectations and guarantee structural performance.

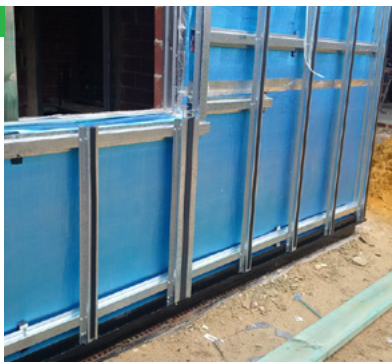


#### EXCELLENT VALUE

Superior zinc-coated finish and increased material base-metal-thickness (BMT) along with a manufacturer to industry direct supply chain means the STUDTEK facade system offers exceptional value-for-money to building owners.

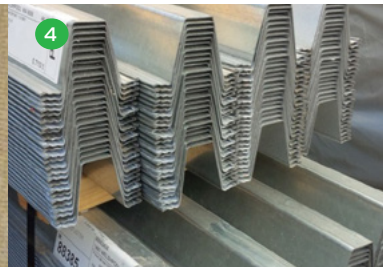
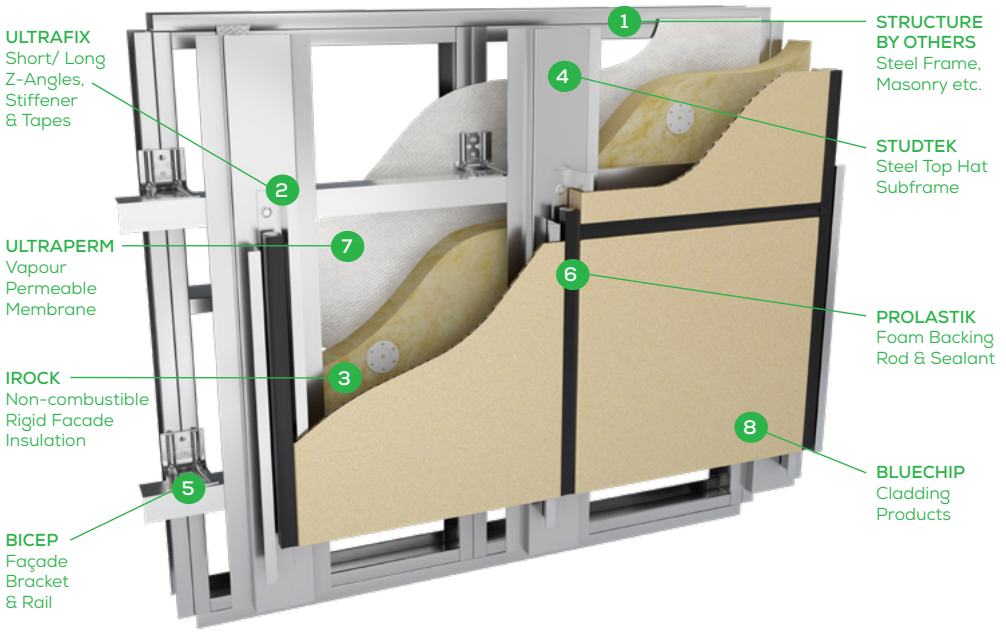
### INSTALL & TECHNICAL

For installation and technical information, scan the QR code and view 'Downloads' tab.





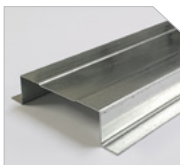
# The Complete System



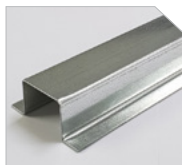
# STUDTEK

## Steel Top-hat Framing System

### Studtek Facade System



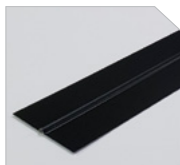
SZ1203558  
Joint Top-hat



SZ503558  
Intermediate Top-hat



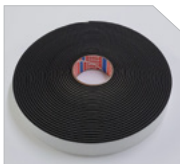
SCC60  
Cavity Closer



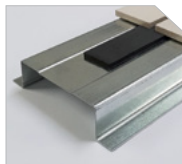
SJS\*\*\*  
Backing Strip

CODE	DESCRIPTION	LEAD TIME	MOQ
SZ1203558	STUDTEK 120 x 35mm Zinc-coated Joint Top-hat, 5.8m (1.20bmt)	Stock	1 Length
SZ503558	STUDTEK 50 x 35mm Zinc-coated Top-hat, 5.8m Length (1.20bmt)	Stock	1 Length
SZA757560	STUDTEK 75 x 75mm Zinc-coated Angle, 6.0m Length (1.15bmt)	Stock	1 Length
SCC60	STUDTEK 35 x 35mm Black Cavity Closer, 6.0m Length (0.55bmt)	Stock	1 Length
SJS359	STUDTEK 67 x 3.5mm Black Backing Strip, 3.59m Length (0.48bmt)	Stock	1 Length
SJS299	STUDTEK 67 x 3.5mm Black Backing Strip, 2.99m Length (0.48bmt)	Stock	1 Length

### Studtek Adhesive Foam Gaskets



TFG4048/32  
Vertical Joint Gaskets



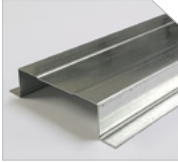
JOINT GASKET  
Applied to Top-hat



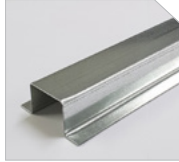
TFG1232  
Intermediate Gasket

CODE	DESCRIPTION	LEAD TIME	MOQ
TFG4048	STUDTEK 40 x 4.8mm EPDM Vertical Joint Gasket, 15m Roll	Stock	1 Roll
TFG4032	STUDTEK 40 x 3.2mm EPDM Vertical Joint Gasket, 25m Roll	Stock	1 Roll
TFG1232	STUDTEK 12 x 3.2mm EPDM Intermediate Gasket, 25m Roll	Stock	1 Roll

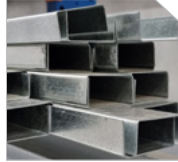
## Studtek Standard Cladding Sub-framing



SZ1203558  
Joint Top-hat



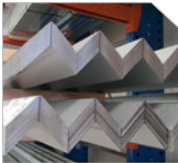
SZ50\*\*58  
Standard Top-hat



SZ653058  
C-channel Framing

CODE	DESCRIPTION	LEAD TIME	MOQ
SZ1203558	STUDTEK 120 x 35mm Zinc-coated Joint Top-hat, 5.8m (1.20bmt)	Stock	1 Length
SZ505058	STUDTEK 50 x 50mm Zinc-coated Top-hat, 5.8m Length (1.20bmt)	Stock	1 Length
SZ503558	STUDTEK 50 x 35mm Zinc-coated Top-hat, 5.8m Length (1.20bmt)	Stock	1 Length
SZ502458	STUDTEK 50 x 24mm Zinc-coated Top-hat, 5.8m Length (1.20bmt)	Stock	1 Length
SZ501558	STUDTEK 50 x 15mm Zinc-coated Top-hat, 5.8m Length (1.20bmt)	Stock	1 Length
SZ653058	STUDTEK 65 x 30mm Zinc-coated C-channel, 5.8m Length (1.20bmt)	Stock	1 Length

## Studtek Angles & Horseshoe Packers



SZA/SGA\*\*\*\*\*  
Angles



BP\*\*\*  
Horseshoe Packers

CODE	DESCRIPTION	LEAD TIME	MOQ
SZA757560	STUDTEK 75 x 75mm Zinc-coated Angle, 6.0m Length (1.15bmt)	Stock	1 Length
SGA505036	STUDTEK 50 x 50mm Angle, 3.6m Length (0.75bmt)	Stock	1 Length
SGA353536	STUDTEK 35 x 35mm Angle, 3.6m Length (0.75bmt)	Stock	1 Length
SGA252536	STUDTEK 25 x 25mm Angle, 3.6m Length (0.75bmt)	Stock	1 Length
BP10	STUDTEK 75 x 1.0mm Horseshoe Packers (White), 4000 Pack	Stock	1 Pack
BP30	STUDTEK 75 x 3.0mm Horseshoe Packers (Blue), 2000 Pack	Stock	1 Pack
BP50	STUDTEK 75 x 5.0mm Horseshoe Packers (Yellow), 1600 Pack	Stock	1 Pack
BP100	STUDTEK 75 x 10.0mm Horseshoe Packers (Black), 600 Pack	Stock	1 Pack



# CLADTRIM

## Colour-matched Cladding Trims

### Description

Designed to compliment some of our most popular cladding systems such as the ULTRAWOOD and ULTRALIGN products, the CLADTRIM range of click-together cladding trims are made from highly durable marine-grade aluminium and prefinished in a wide range of wood-look, anodised or powdercoat finishes to perfectly match the cladding. ULTRAFIX completes our range of specialised aluminium cladding extrusions and includes z-angles and stiffener profiles which are used to fabricate and install cladding products such as our aluminium ULTRACORE IQ panels using the common mechanical cassette-fix system.

### Product Benefits



#### NON-COMBUSTIBLE

Made of aluminium, all CLADTRIM and ULTRAFIX extrusions are deemed-to-satisfy non-combustible in accordance with NCC 2022, Clause C2D10(6)(e) with a coating of <1mm thick and a spread-of-flame index of 0.



#### CLADTRIM - WEATHERPROOFING

The CLADTRIM profiles provide a colour-matched flashing that neatly overlaps the ends of the cladding, enabling the application of a hidden sealant bead to ensure weatherproofing without compromising aesthetics.



#### CLADTRIM - CLICK TOGETHER

The CLADTRIM range of cladding trims includes profiles for all common junctions such as; starter strip, cover strip, edge trim, internal corners and external corners. Furthermore all profiles are click-together for invisible secret-fixing.



#### CLADTRIM - PRACTICALITY

When installed as designed, the CLADTRIM profiles provide space to allow for thermal expansion & contraction whilst neatly hiding the board ends to create clean 'straight-lines' without the cuts needing to be 'mm' perfect.



#### CLADTRIM - COLOUR MATCHED

Unlike some cladding trims, the CLADTRIM profiles are made from the exact same material as the ULTRAWOOD and ULTRALIGN cladding planks. This means they can be coated in exactly the same finish for a perfect match.



#### ULTRAFIX - NCC COMPLIANCE

The specialised ULTRAFIX z-angles are designed for fabricating and installing aluminium facade panels like ULTRACORE IQ using the proven mechanical cassette-fix system to comply with NCC 2022 Clause C2D15.



#### CLADTRIM - VERSATILITY

Suitable for use with a wide range of weatherboard-type cladding materials such as fibre cement, natural timber and aluminium, the CLADTRIM click-together profiles can accommodate different board thicknesses of between approx. 15 - 25mm.

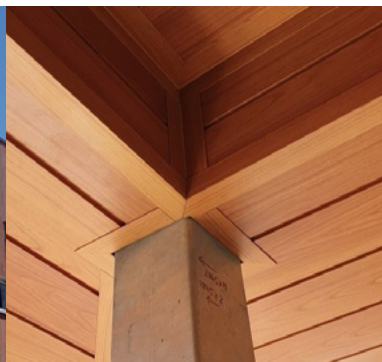


#### ULTRAFIX - BEST PRACTICE

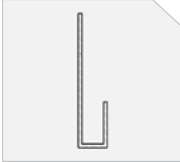
To help prevent bimetallic corrosion, the ULTRAFIX long z-angle is always powdercoated to provide an isolation layer between the aluminium z-angle and the steel sub-frame. To be sure of best practice, always use ULTRAFIX z-angles.

### INSTALL & TECHNICAL

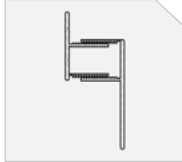
For installation and technical information, scan the QR code and view 'Downloads' tab.



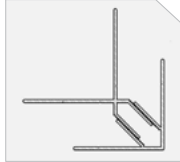
## Cladtrim Colour-matched Trim System



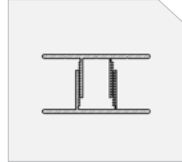
CT\*SS  
Starter Strip



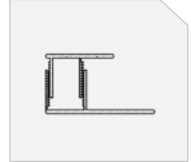
CT\*ZPET  
Z-shape Profile



CT\*CP  
Universal Corner



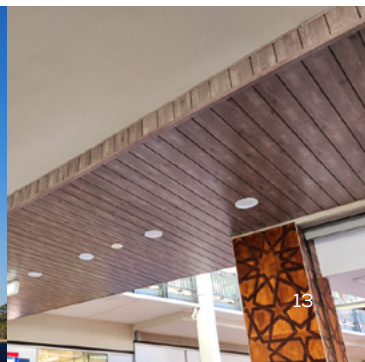
CT\*CS  
Joint Cover Strip



CT\*ZPET  
Edge Trim Profile

CODE	DESCRIPTION	LEAD TIME	MOQ
CT*SS	CLADTRIM J-shape Starter Strip (Insert Colour), 5.5m Length	2-3 Weeks	1 Length
CT*ZPET	CLADTRIM Z-shape Joint Profile (Insert Colour), 5.5m Length	2-3 Weeks	1 Length
CT*CP	CLADTRIM 40mm 2-piece Corner (Insert Colour), 5.5m Length	2-3 Weeks	1 Length
CT*CS	CLADTRIM 40mm 2-piece Cover Strip (Insert Colour), 5.5m Length	2-3 Weeks	1 Length
CT*ZPET	CLADTRIM 40mm 2-piece Edge Trim (Insert Colour), 5.5m Length	2-3 Weeks	1 Length
CT*5050	CLADTRIM 50 x 50mm Angle (Insert Colour), 6.5m Length	2-3 Weeks	1 Length
CT*4040	CLADTRIM 40 x 40mm Angle (Insert Colour), 6.5m Length	2-3 Weeks	1 Length
CT*4020	CLADTRIM 40 x 20mm Angle (Insert Colour), 5.8m Length	2-3 Weeks	1 Length
CT*2020	CLADTRIM 20 x 20mm Angle (Insert Colour), 5.8m Length	2-3 Weeks	1 Length

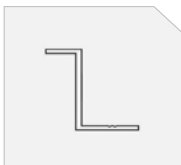
\*The asterisk in the code denotes the specified type of finish to be applied to the aluminium extrusion as follows: U = Ultrawood Timber Colours, A = Anodised Colours and P = Powdercoat Colours.



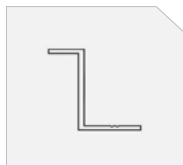
# ULTRAFIX

## Extrusions for Aluminium Cassette-Fix Panels

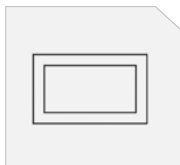
### Ultrafix Cassette-fix Z-angles & Stiffener



UZLW58  
Long Z-angle



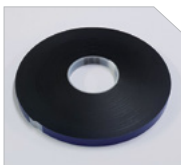
UZSM58  
Short Z-angle



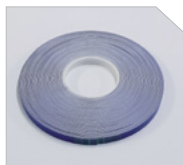
US4020360  
RHS Stiffener

CODE	DESCRIPTION	LEAD TIME	MOQ
UZLB58	ULTRAFIX 24mm Long Z-angle (Powdercoated Black), 5.8m Length	Stock	20 Lengths
UZSM58	ULTRAFIX 22mm Short Z-angle (Mill Finish), 5.8m Length	Stock	20 Lengths
US4020358	ULTRAFIX 40 x 20 x 3mm RHS Stiffener (Mill Finish), 5.8m Length	Stock	1 Length

### Tesa Double-Sided Tape for Stiffeners



TT707815  
15mm Panel Tape



TT704412  
12mm Stiffener Tape



TT60040  
Industry Cleaner



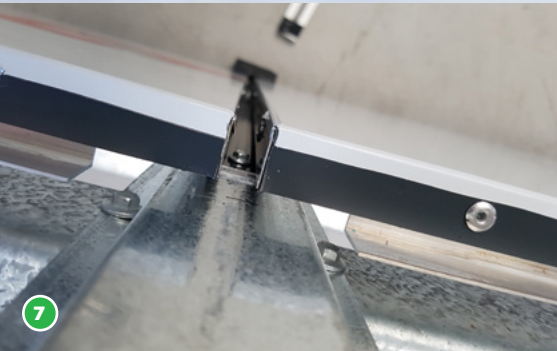
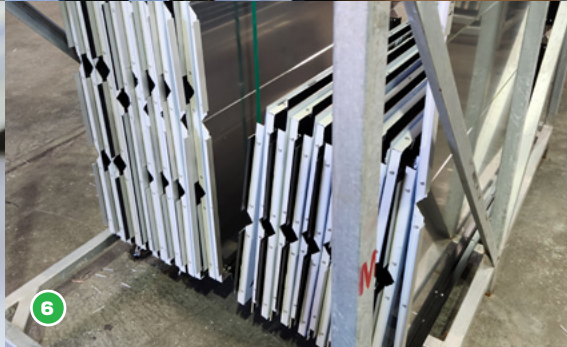
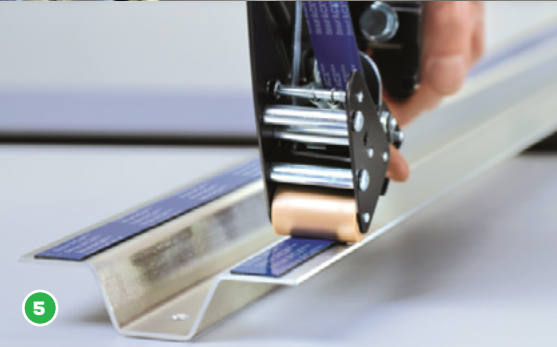
TT60150  
Adhesion Promoter

CODE	DESCRIPTION	LEAD TIME	MOQ
TT707815	TESA 7078 ACXplus 15mm Panel Tape, 18m Roll	Stock	1 Roll
TT704412	TESA 7044 ACXplus 12mm Stiffener Tape, 25m Roll	Stock	1 Roll
TT60040	TESA Industry Cleaner, 500ml Can	Stock	1 Can
TT60150	TESA Adhesion Promoter, 100ml Can	Stock	1 Can

### Using Ultrafix to make Aluminium Cassette Panels

- |   |  |
|---|--|
| 1. V-groove the back of aluminium panels  | 5. Tape-fix ULTRAFIX stiffeners to the panels  |
| 2. Bend the 25mm panel returns back 90°   | 6. Carefully pack panels for transport to site |
| 3. Clamp ULTRAFIX z-angles to all returns | 7. Fix panels to top-hats through z-angles     |
| 4. Fix z-angles through all panel returns | 8. Seal over fixings with PROLASTIK sealant    |





# EUROFIX

## Specialised Cladding Fixings

### Description

EUROFIX is a range of specialised architectural fixings made in Europe for installing a range of different facade panels using specialised sub-frame systems. The most common EUROFIX product is the colour-matched rivet system which is used to install prefinished panels onto the STUDTEK ventilated facade system with a 'fixed and floating' methodology to ensure panel durability. EUROFIX also includes a concealed anchor system which is used to fix BICEP hanger brackets onto the reverse side of facade panels to enable the panels to be installed onto BICEP carrier rails with no visible fixings. Specialised EUROFIX tools complete the range.

### Product Benefits



#### COLOUR-MATCHED

Powdercoated in Europe using the latest static application technology, EUROFIX colour-matched rivets can be matched to any RAL colour and air-freighted to Australia for quick turn-around.



#### BACK-TO-BACK WARRANTY

When you use EUROFIX fixings along with either the BICEP facade system or STUDTEK sub-framing we can offer additional peace-of-mind by providing a back-to-back warranty covering the complete system from one supplier.



#### STAINLESS DURABILITY

Manufactured from A4 stainless steel for maximum durability and corrosion resistance in all environments, EUROFIX rivets are compatible with both steel and aluminium sub-frames.



#### SPECIALISED TOOLS

Both the EUROFIX colour-matched rivet system and the EUROFIX concealed anchor system include specialised tools such as drill-bits, centralising tools and replacement bits to assist in getting the job done right.



#### FIXED & FLOATING SYSTEM

Compliant with the requirements of all major prefinished panel products, the EUROFIX rivet system incorporates 'fixed' points for panel alignment and 'floating' points to allow for movement and ensure panel durability.



#### ALL CLADDING TYPES

As one of Australia's largest cladding suppliers, we are in the ideal position to design and supply compatible fixing systems which meet the manufacturer's specifications for all major prefinished facade panels.



#### 3-WAY MOVEMENT

When used with the STUDTEK ventilated facade sub-framing system, a combination of the 'fixed and floating' rivets along with the STUDTEK foam gaskets allows 3-way movement to eliminate stress on the panels.



#### EUROPEAN PERFECTION

From the very best raw materials to the manufacturing precision, high-tech coating equipment and leading global quality control's EUROFIX products are the 'swiss-watch' equivalent of facade fixings.

### INSTALL & TECHNICAL

For installation and technical information, scan the QR code and view 'Downloads' tab.



## Eurofix Concealed Anchor System



TS6CA\*\*  
Concealed Anchors



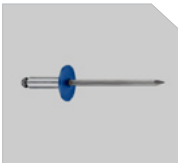
TS6DB9/12  
9mm/12mm Drill Bit



TSUDL  
Depth Locator

CODE	DESCRIPTION	LEAD TIME	MOQ
TS6CA9	EUROFIX 9mm D6 Concealed Anchor, 500 Pack	3-4 Weeks	1 Pack
TS6CA12	EUROFIX 12mm D6 Concealed Anchor, 500 Pack	3-4 Weeks	1 Pack
TS6DB9	EUROFIX Drill Bit For 9mm D6 Anchor (use with TSUDL)	Stock	1 Bit
TS6DB12	EUROFIX Drill Bit For 12mm D6 Anchor (use with TSUDL)	Stock	1 Bit
TSUDL	EUROFIX Universal Depth Locator Tool (use with TS6DB*)	Stock	1 Bit

## Eurofix Colour-matched Rivet System



CFR\*\*  
Coloured Rivet



CFFPS  
Rivet Sleeve



CFDB10  
10mm Drill Bit



CFCT10  
Centralising Tool



CFDB51  
Replacement Bit

CODE	DESCRIPTION	LEAD TIME	MOQ
CFR14	EUROFIX 14mm D15 Rivet (Insert Colour), 250 Pack	3-4 Weeks	1 Pack
CFR18	EUROFIX 18mm D15 Rivet (Insert Colour), 250 Pack	3-4 Weeks	1 Pack
CFFPS	EUROFIX 10mm Fixed Point Rivet Sleeve, 100 Pack	3-4 Weeks	1 Pack
CFDB10	EUROFIX 10mm Rivet Fix Drill Bit (To Drill Panel)	Stock	1 Bit
CFCT10	EUROFIX 10mm Centralising Tool (To Drill Framing)	Stock	1 Tool
CFDB51	EUROFIX 5.1mm Replacement Bit (To Suit CFCT10)	Stock	1 Bit

## Eurofix Colour-matched Screws

CODE	DESCRIPTION	LEAD TIME	MOQ
CFM30	EUROFIX 30mm D12 Metal Screw (Insert Colour), 250 Pack	3-4 Weeks	1 Pack
CFMW30	EUROFIX 30mm D12/16 Screw & Washer (Colour), 250 Pack	3-4 Weeks	1 Pack
CFSBIT	EUROFIX T25 Wedge Screw Driver Bit (To Suit CFM***)	Stock	1 Bit



# PROLASTIK

## Facade Joint Sealant

### Description

PROLASTIK joint sealant is a high performance, 100% neutral cure silicone sealant which has excellent resistance to weathering, UV radiation, vibration, moisture, ozone, temperature extremes, airborne pollutants, and many cleaning detergents and solvents. It is a single-component elastomeric sealant that is permanently elastic upon curing and has a movement capability of  $\pm 50\%$ . Specially formulated to achieve superior performance and be environmentally friendly (APEO, formaldehyde and phthalate free), PROLASTIK complies with the requirements of the Singapore Green Building Product Labelling Scheme (SGBPLS) and ASTM C920.

### Product Benefits



#### 200 YEAR HISTORY

The technology and chemical formulation used in the manufacture of PROLASTIK has been proven all over the world for 200 years since 1824 when Swedish chemist Jons Jackobs Berzelius first managed to isolate silicone.



#### PERMANENTLY FLEXIBLE

Australia's strong UV can cause some alternative types of sealant to become hard and brittle resulting in cracking. PROLASTIK remains permanently flexible with a movement capability of  $\pm 50\%$  to handle expansion and contraction.



#### MANUFACTURER DIRECT

PROLASTIK joint sealant offers exceptional value because it is supplied direct to market by the manufacturer meaning facade contractors get the best quality product at the most affordable price.



#### EXCELLENT VERSATILITY

PROLASTIK is very well-suited to provide a strong weatherproof seal and excellent adhesion to most common building materials such as aluminium, galvanised steel, zincalume steel, painted surfaces, glass, bricks and concrete.



#### GREEN, GREEN, GREEN

Complying with the stringent requirements of the Singapore Green Building Product Labelling Scheme (SGBPLS) and ASTM C920, PROLASTIK is environmentally friendly and the green choice for all construction joints.



#### INDOORS & OUTDOORS

The combination of its exceptional UV durability and is excellent 'Green' credentials means that PROLASTIK is the ideal choice of joint sealant for both indoor and exposed outdoors locations and applications.



#### SAFER & HEALTHIER

Compared to many other sealant chemicals, PROLASTIK contains zero (0%) of alkylphenol ethoxylates (APEO), formaldehyde or phthalates making it safer and healthier to use for applicators and building inhabitants.

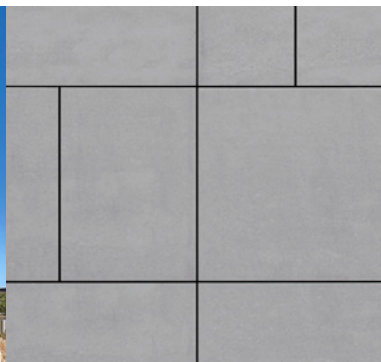


#### MATTE FINISH

Advances in technology mean that unlike traditional silicone sealants of the past (which were often quite glossy), PROLASTIK offers an attractive 'Matte Finish' which is often preferred by architects and designers.

### INSTALL & TECHNICAL

For installation and technical information, scan the QR code and view 'Downloads' tab.



## Prolastik Facade Joint Sealant



PKNC\*60  
NC Silicone Sealant



PKNC\*60  
20 x 600ml Sausages

CODE	DESCRIPTION	LEAD TIME	MOQ
PKNCB60	PROLASTIK Joint Sealant Matt Black, 600ml Sausage	Stock	20 Sausages
PKNCG60	PROLASTIK Joint Sealant Matt Grey, 600ml Sausage	Stock	20 Sausages
PKNCW60	PROLASTIK Joint Sealant Matt White, 600ml Sausage	Stock	20 Sausages

## Prolastik Foam Backing Rod

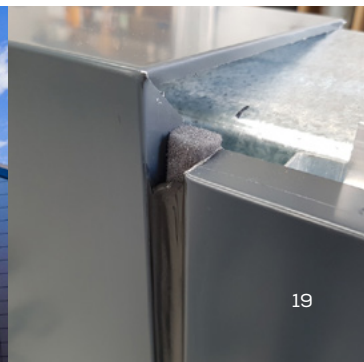


BBR016  
Foam Backing Rod



BBR016  
150 Metre Roll

CODE	DESCRIPTION	LEAD TIME	MOQ
BBR016	PROLASTIK 16mm Foam Backing Rod, 150m Roll	Stock	1 Roll





We've Got It Covered



V1224



**Blue Chip Group Pty Ltd**

SYDNEY | MELBOURNE | BRISBANE | PERTH | ADELAIDE

P 1300 945 123

E [sales@bluechipgroup.net.au](mailto:sales@bluechipgroup.net.au)

[www.bluechipgroup.net.au](http://www.bluechipgroup.net.au)

DISCLAIMER No information or advice contained in this publication is binding in any way shape or form and is provided on a without prejudice basis. All photographs and colour swatches are indicative only. All dimensions are nominal and all product data and specifications are subject to change without notice. All pricing, sales, communications and transactions are subject to Blue Chip Group's terms of trading which are available on request.