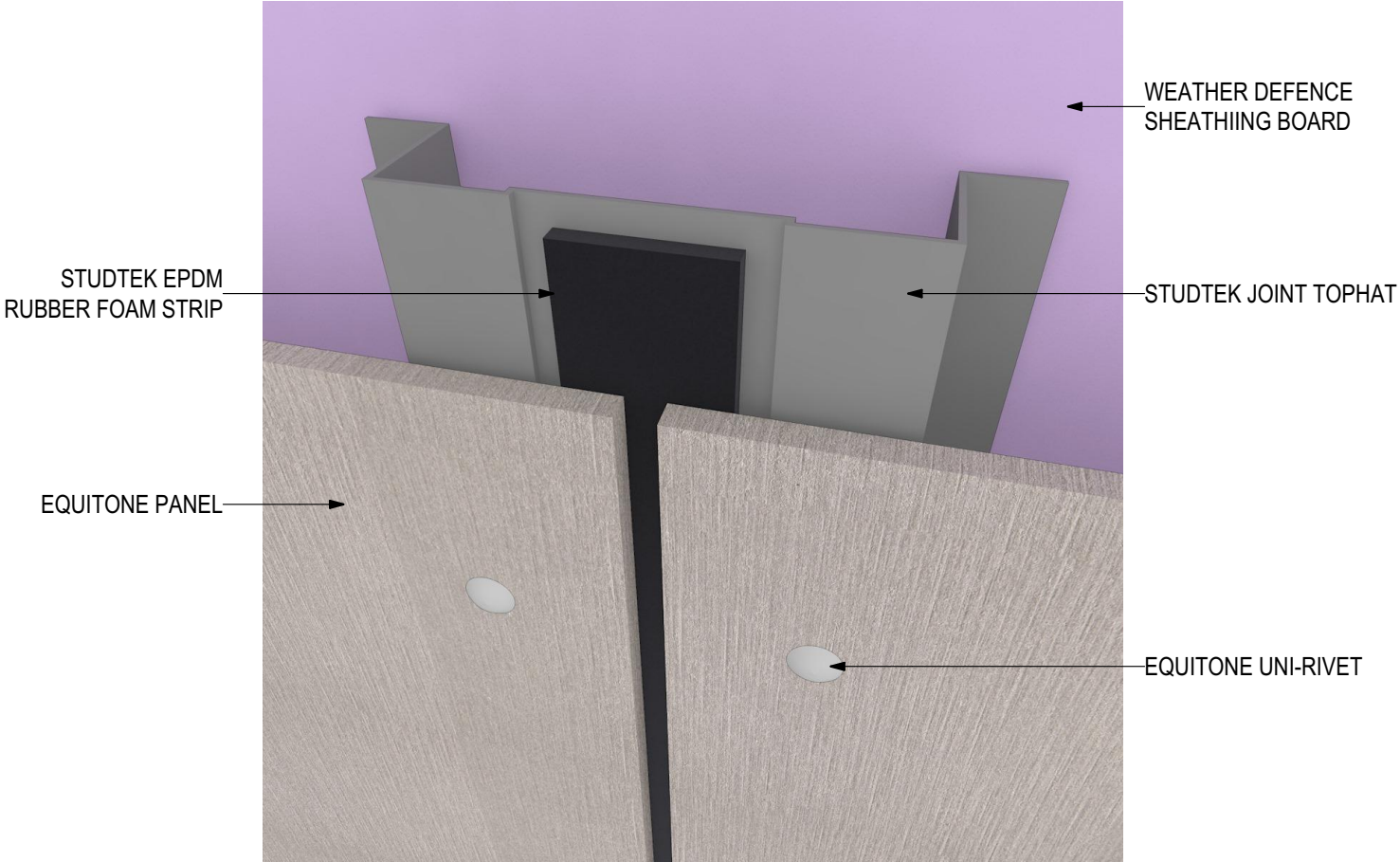


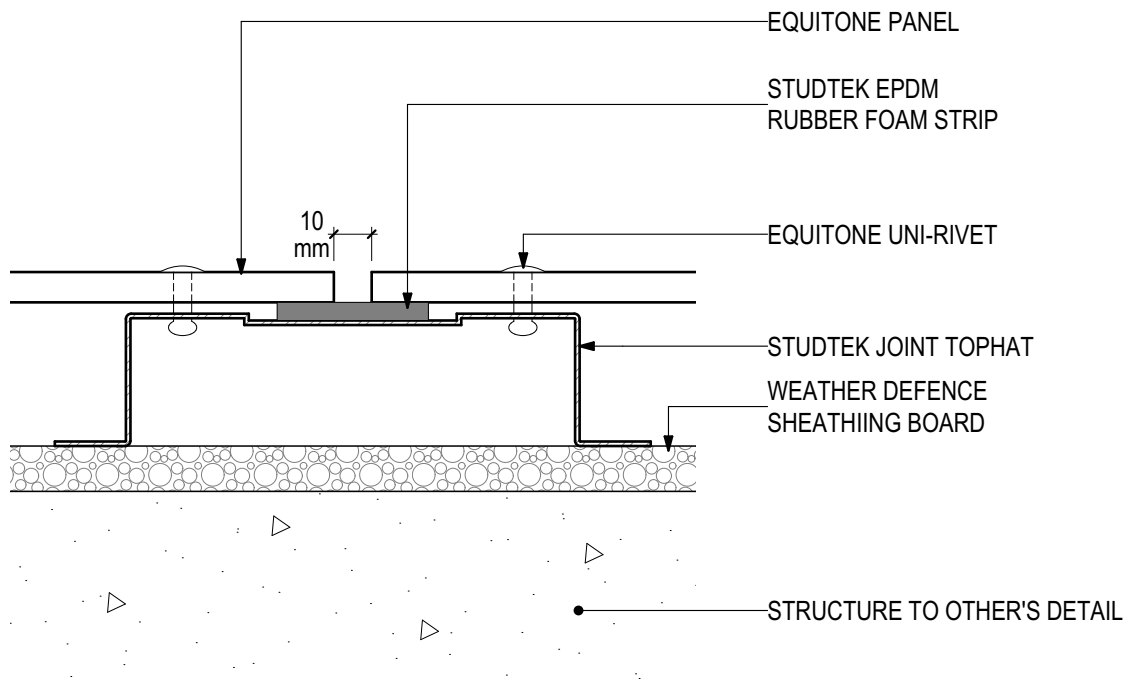
EQUITONE Through-colour Fibre Cement EQ-08-VRF Visible Rivet Fix



INSTALLATION DETAILS

Disclaimer: These details are general design details for use as a guide. Any use is at their own discretion and risk.

EQUITONE Through-colour Fibre Cement EQ-08-VRF Visible Rivet Fix

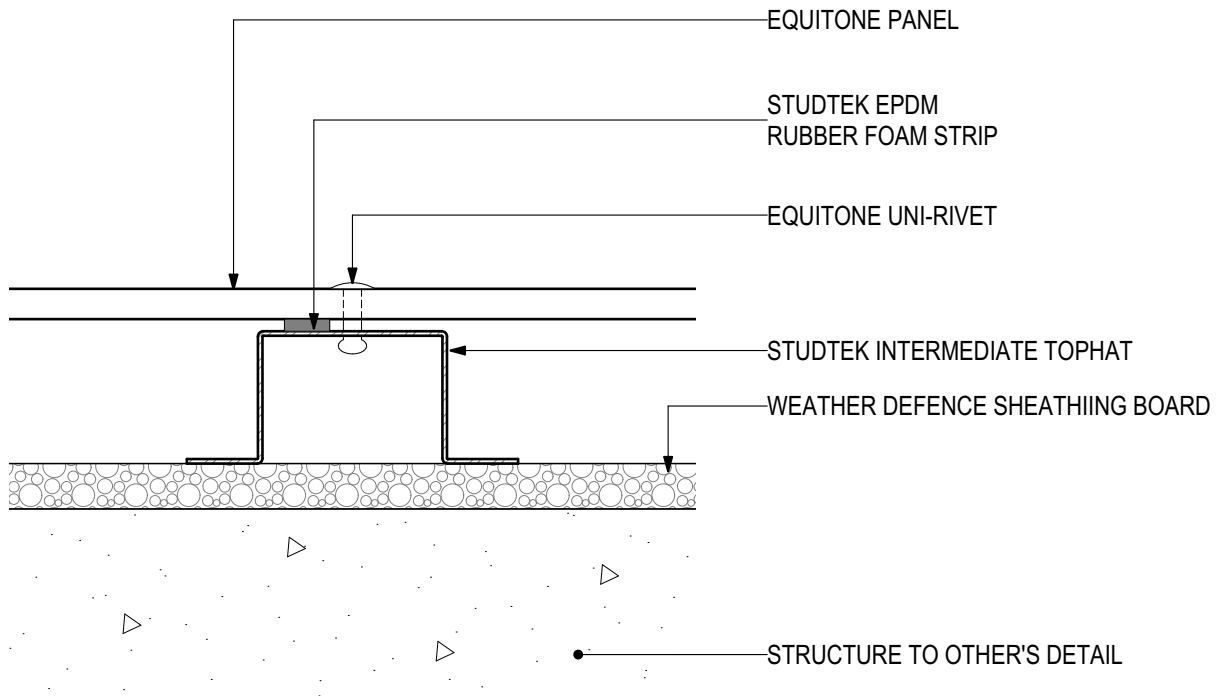


D.01 - TYPICAL FIXING DETAIL

SCALE 1:2

Disclaimer: These details are general design details for use as a guide. Any use is at their own discretion and risk.

EQUITONE Through-colour Fibre Cement EQ-08-VRF Visible Rivet Fix

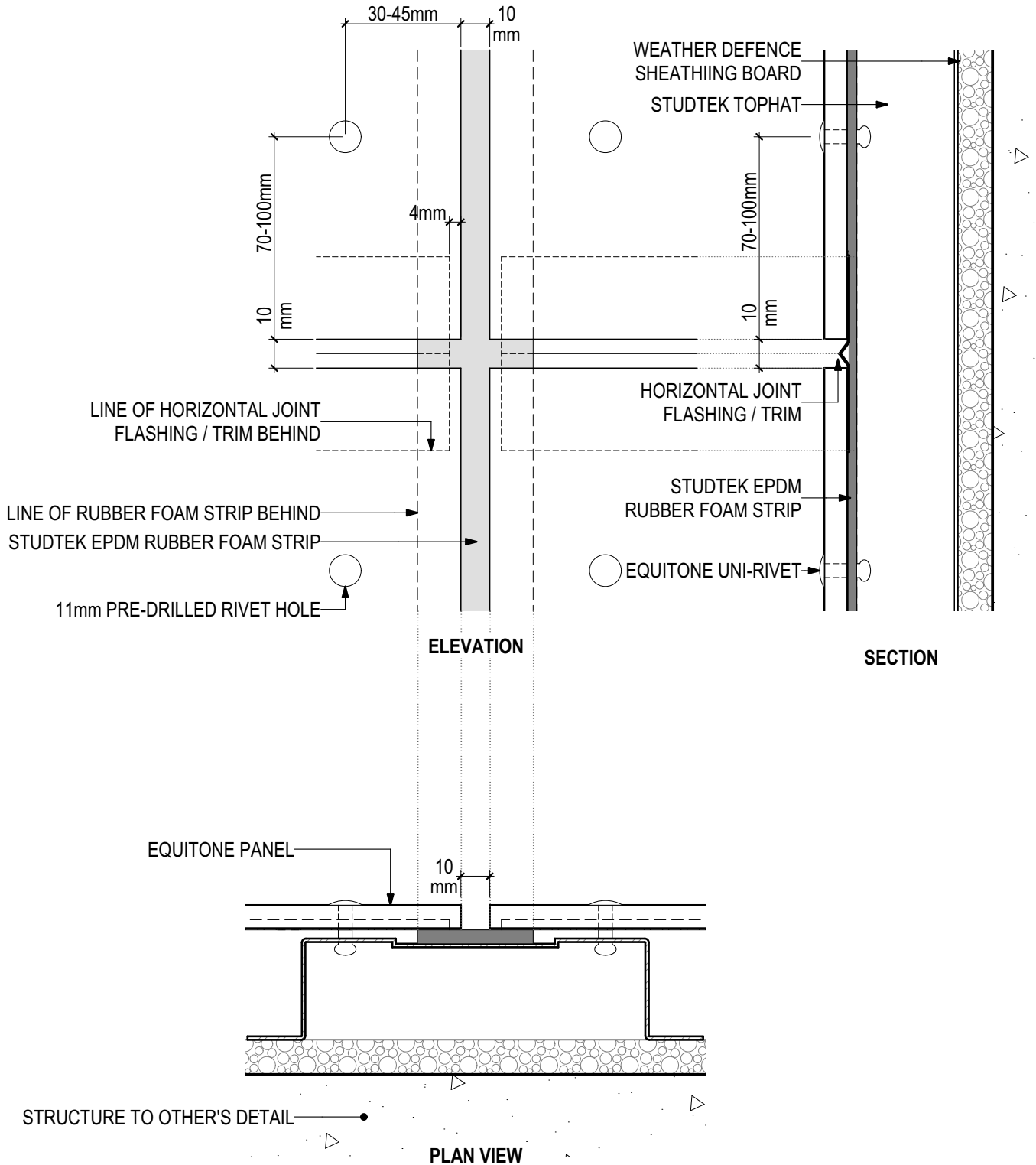


D.02 - INTERMEDIATE FIXING DETAIL

SCALE 1:2

Disclaimer: These details are general design details for use as a guide. Any use is at their own discretion and risk.

EQUITONE Through-colour Fibre Cement EQ-08-VRF Visible Rivet Fix

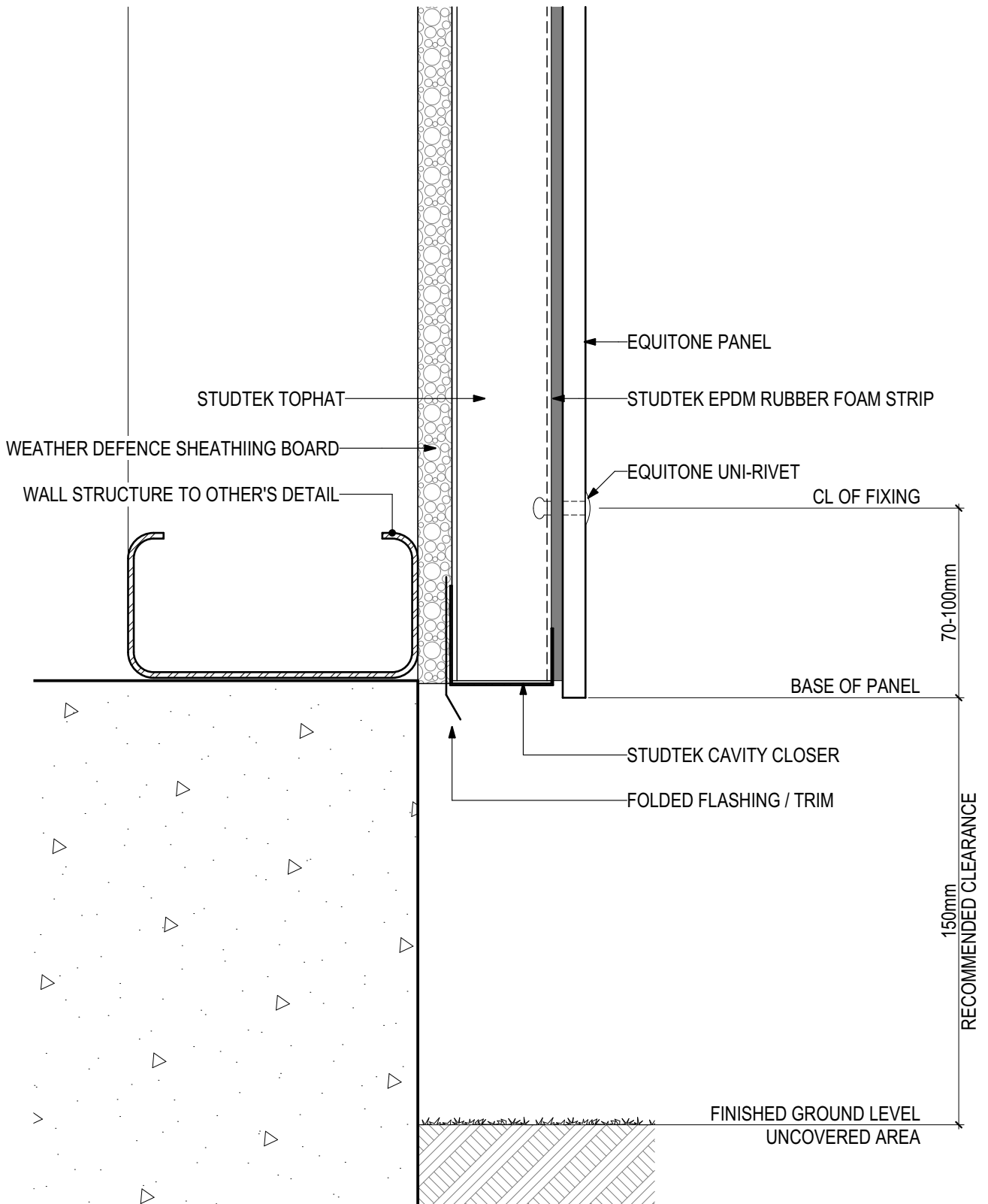


D.03 - HORIZONTAL CLOSED JOINT

SCALE 1:2

Disclaimer: These details are general design details for use as a guide. Any use is at their own discretion and risk.

EQUITONE Through-colour Fibre Cement EQ-08-VRF Visible Rivet Fix

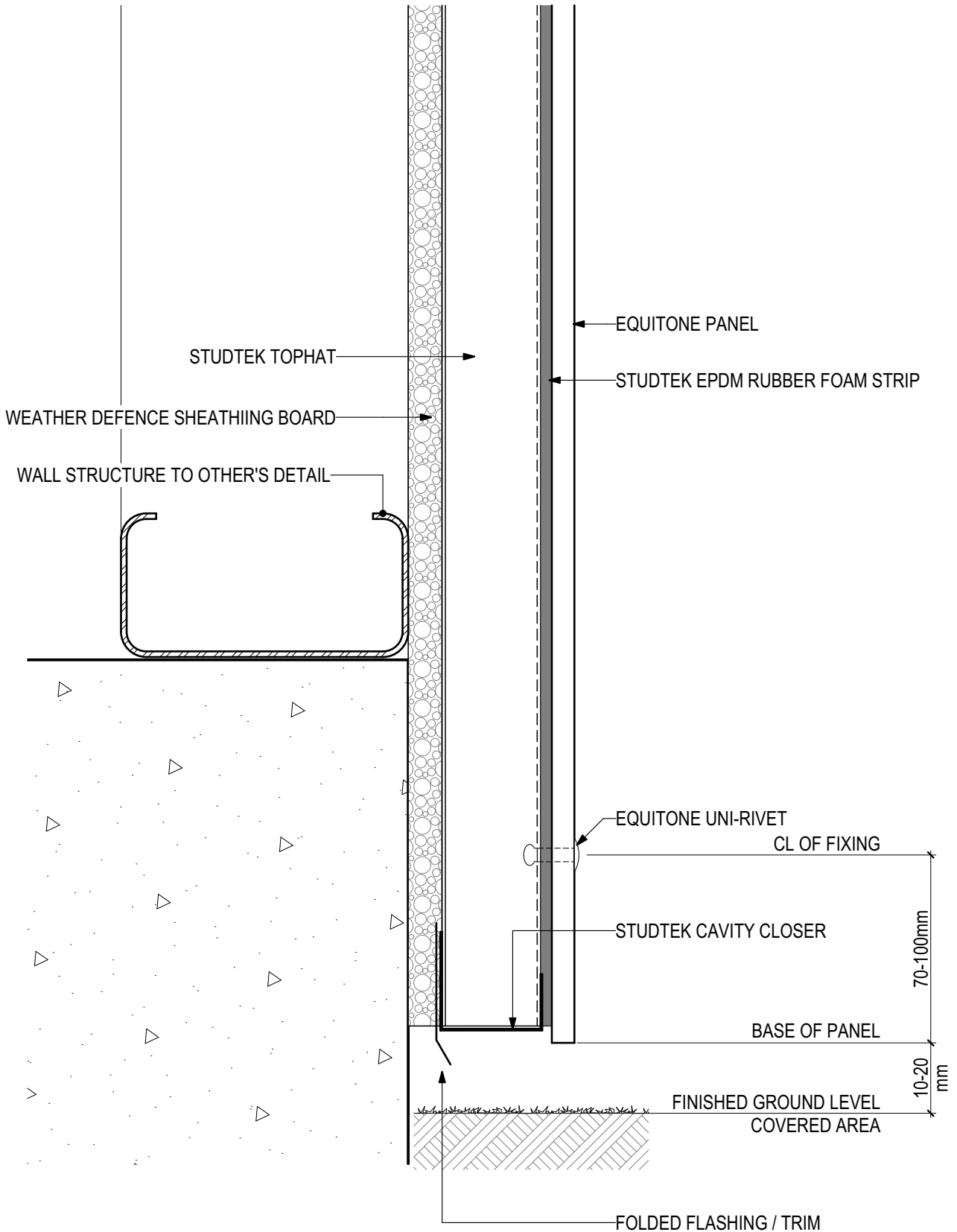


D.04 - BASE DETAIL (UNCOVERED)

SCALE 1:2

Disclaimer: These details are general design details for use as a guide. Any use is at their own discretion and risk.

**EQUITONE Through-colour Fibre Cement
EQ-08-VRF Visible Rivet Fix**

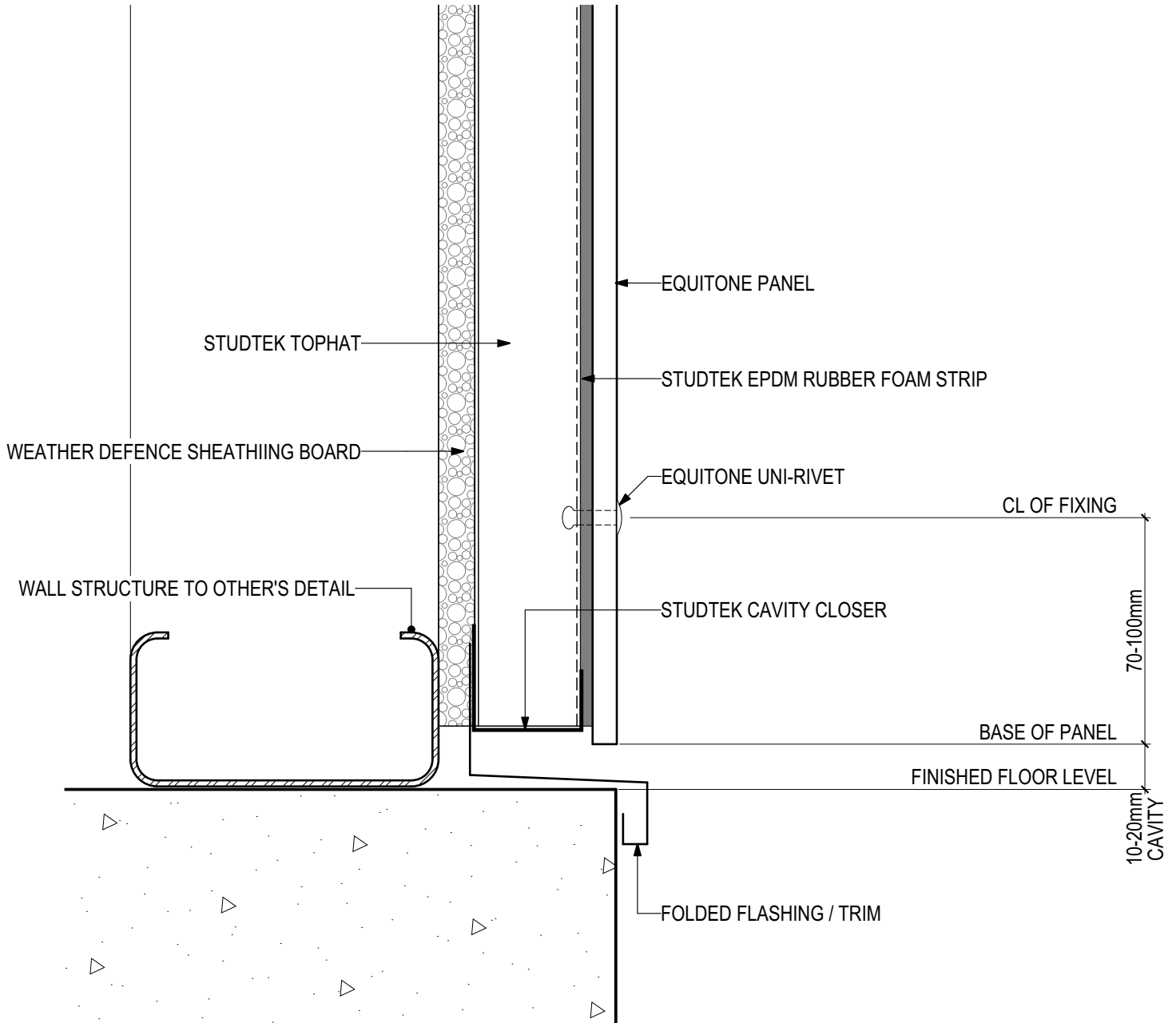


D.05 - BASE DETAIL (COVERED)

SCALE 1:2

Disclaimer: These details are general design details for use as a guide. Any use is at their own discretion and risk.

**EQUITONE Through-colour Fibre Cement
EQ-08-VRF Visible Rivet Fix**

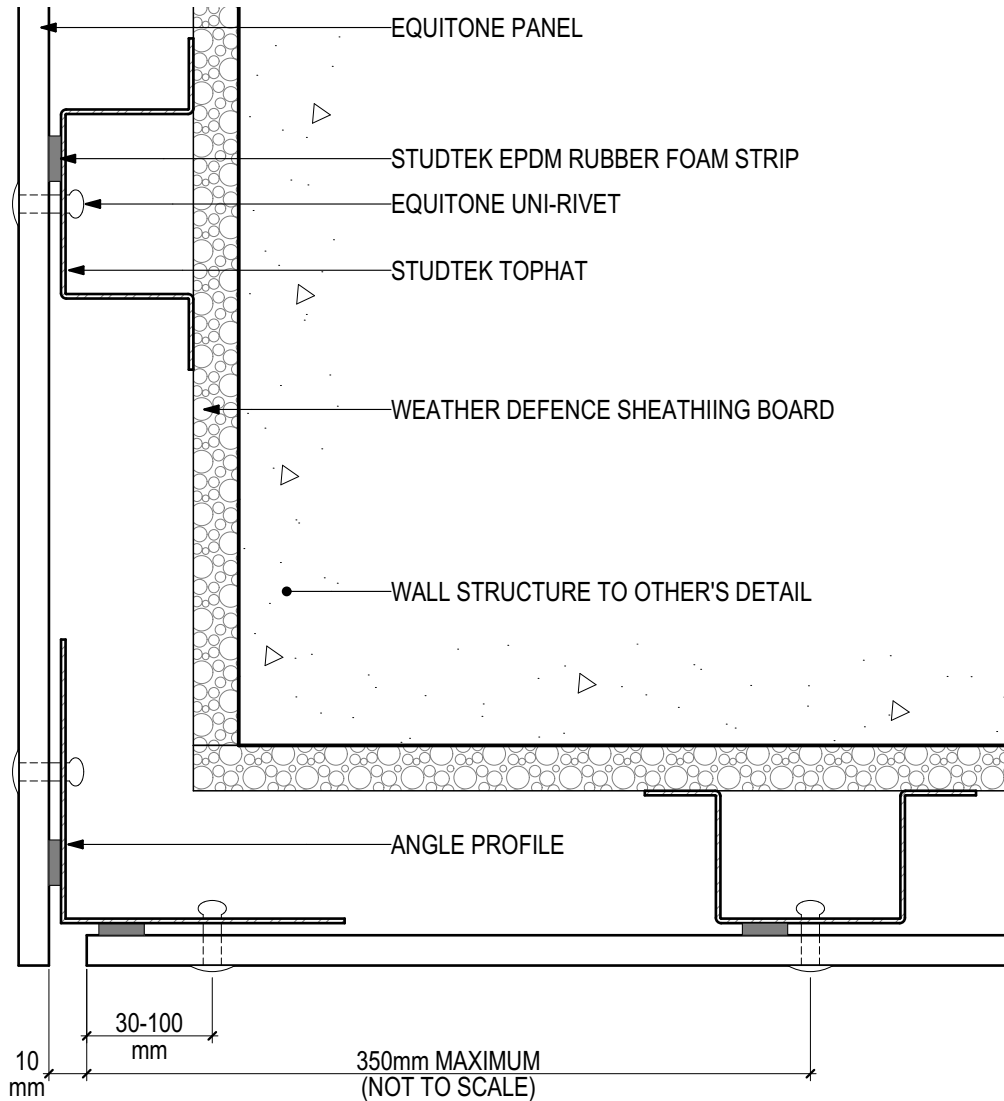


D.06 - BASE DETAIL WITH INLINE SLAB

SCALE 1:2

Disclaimer: These details are general design details for use as a guide. Any use is at their own discretion and risk.

EQUITONE Through-colour Fibre Cement EQ-08-VRF Visible Rivet Fix

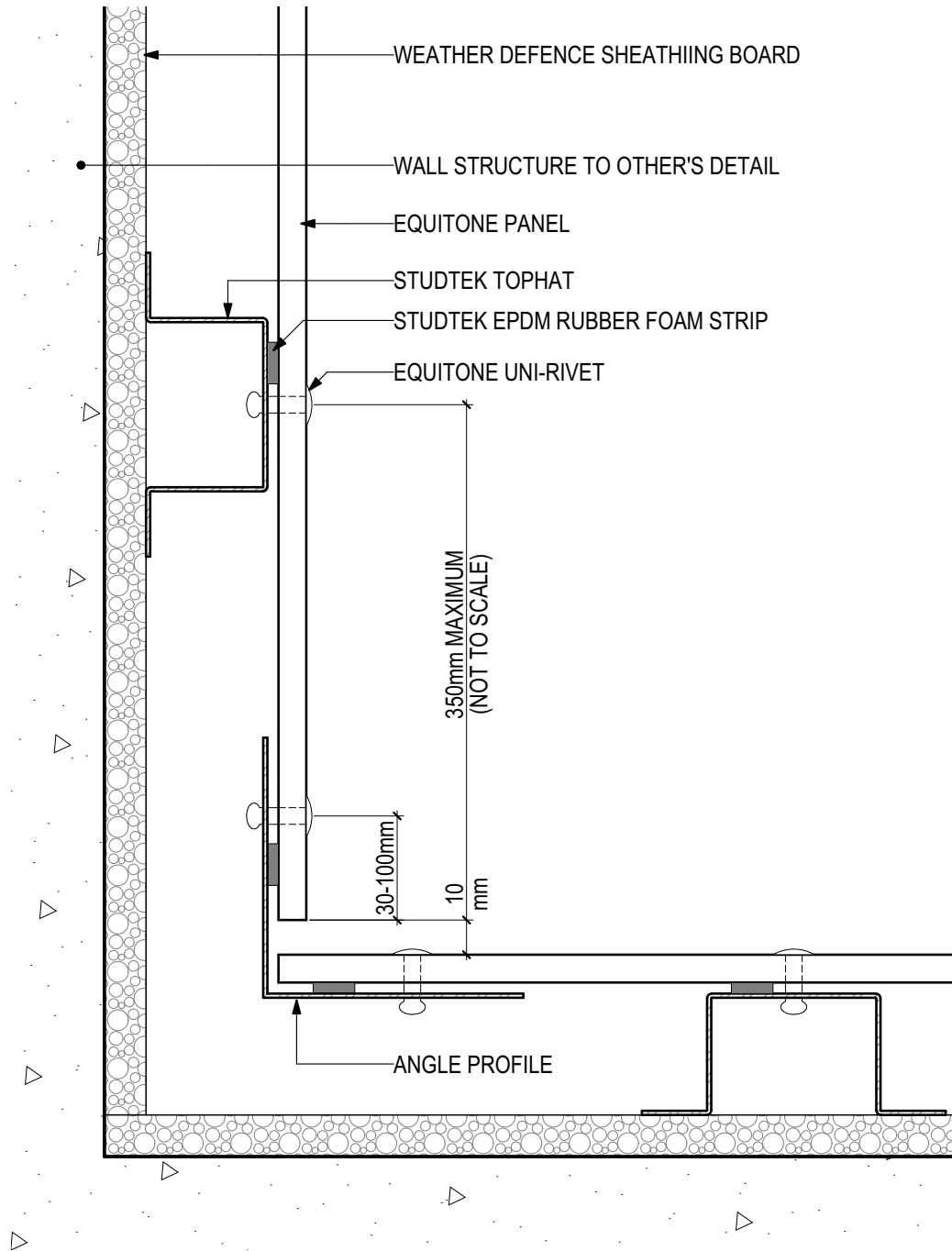


D.07 - EXTERNAL CORNER

SCALE 1:2

Disclaimer: These details are general design details for use as a guide. Any use is at their own discretion and risk.

EQUITONE Through-colour Fibre Cement EQ-08-VRF Visible Rivet Fix

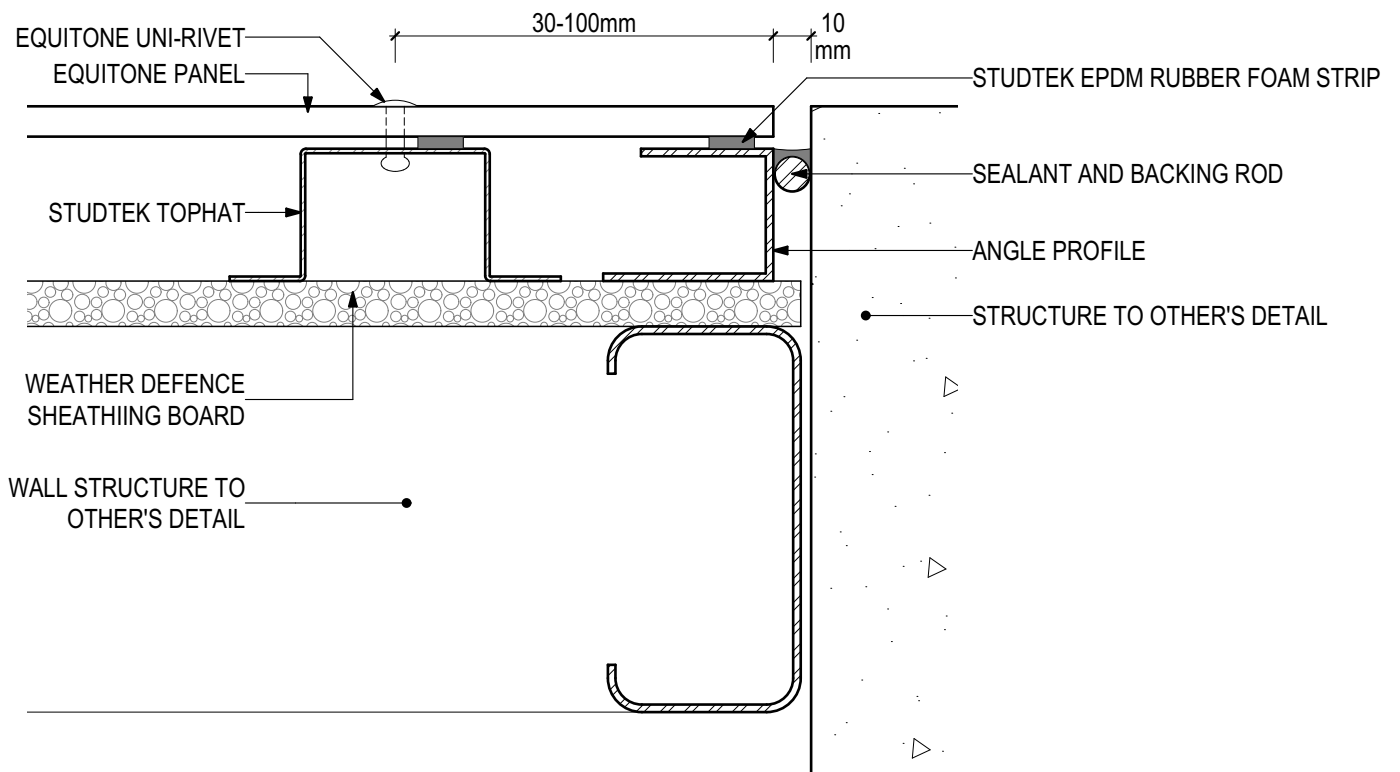


D.08 - INTERNAL CORNER

SCALE 1:2

Disclaimer: These details are general design details for use as a guide. Any use is at their own discretion and risk.

EQUITONE Through-colour Fibre Cement EQ-08-VRF Visible Rivet Fix

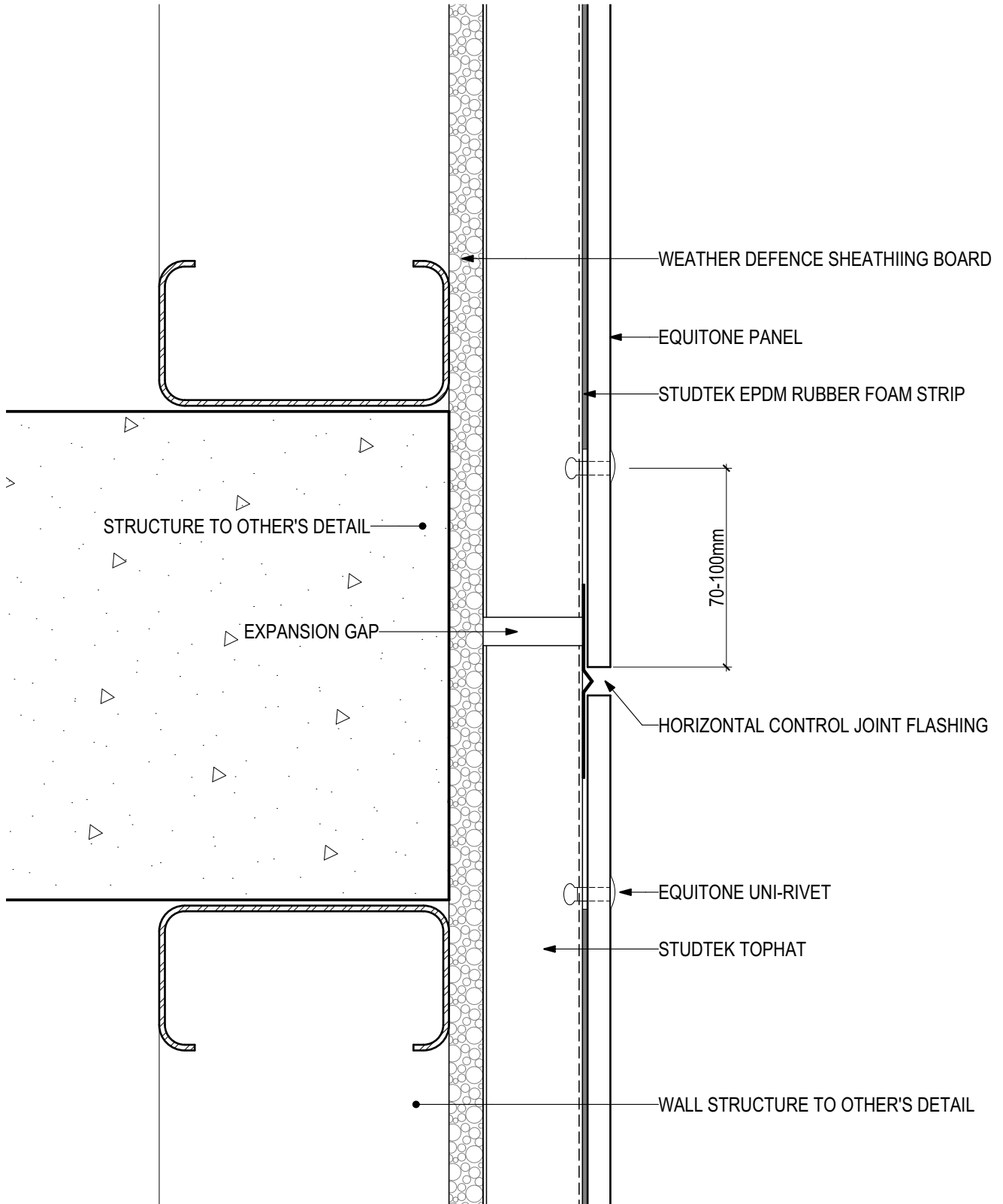


D.09 - ABUTMENT JOINT

SCALE 1:2

Disclaimer: These details are general design details for use as a guide. Any use is at their own discretion and risk.

EQUITONE Through-colour Fibre Cement EQ-08-VRF Visible Rivet Fix

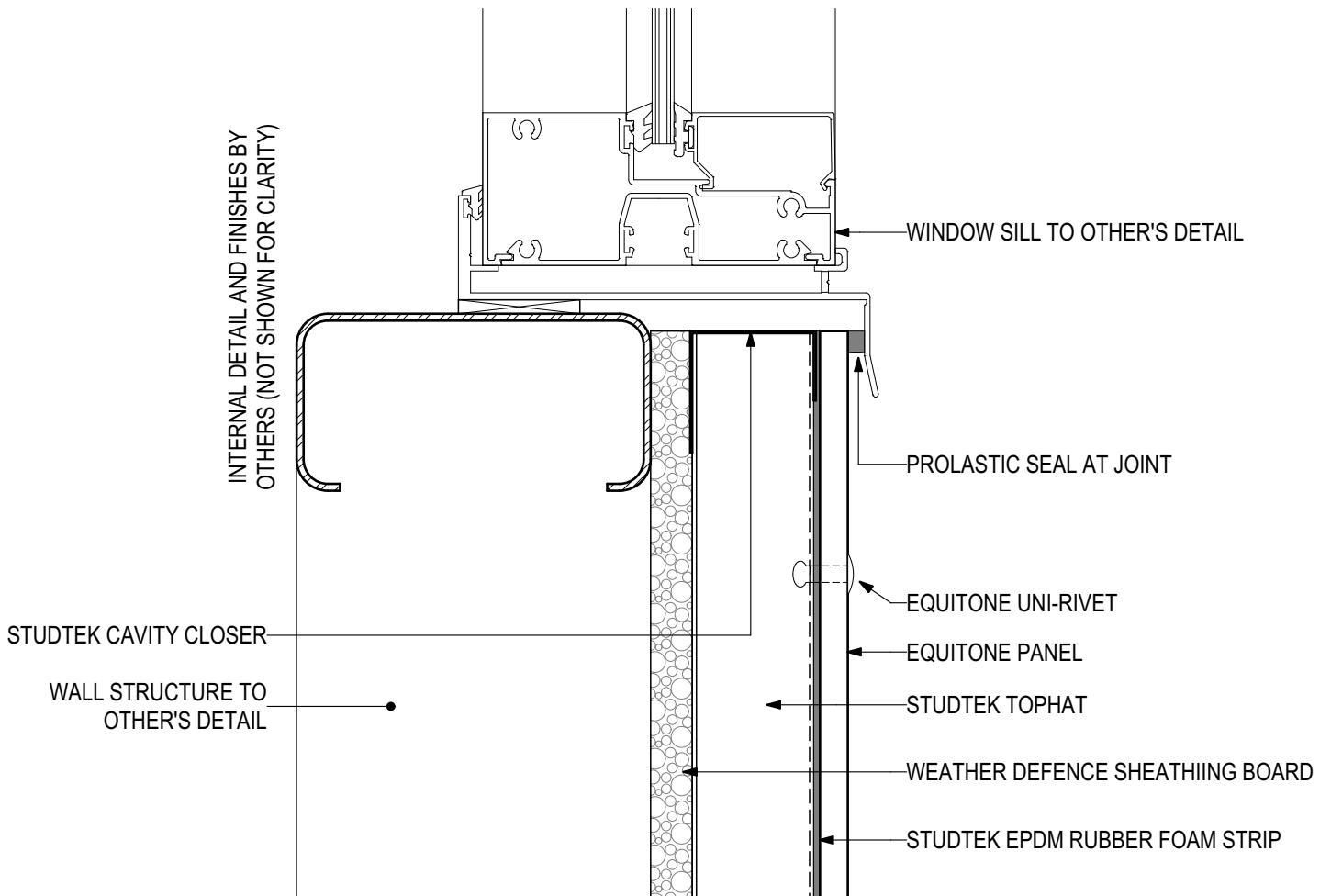


D.10 - HORIZONTAL CONTROL JOINT

SCALE 1:2

Disclaimer: These details are general design details for use as a guide. Any use is at their own discretion and risk.

EQUITONE Through-colour Fibre Cement EQ-08-VRF Visible Rivet Fix

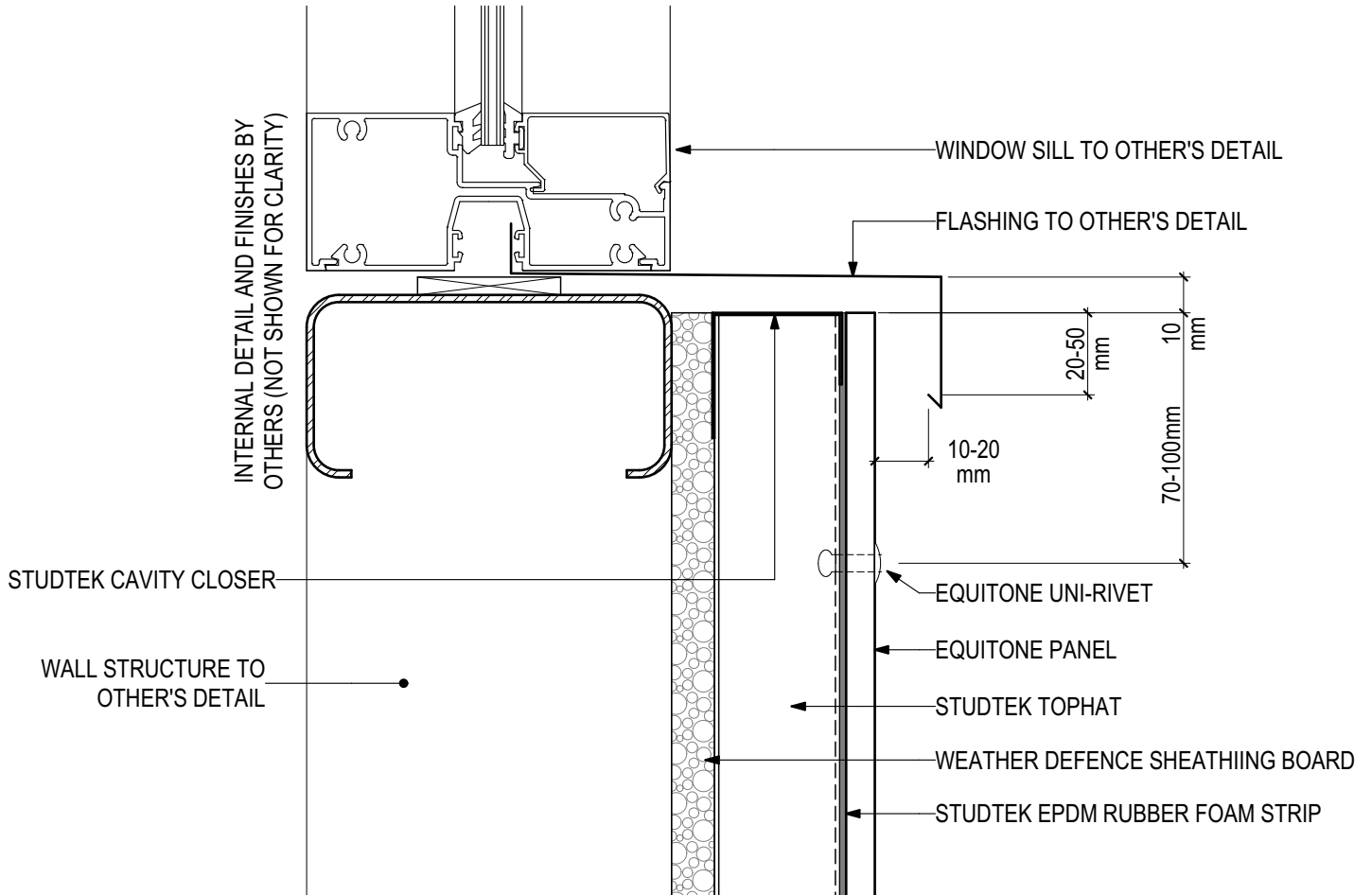


D.11 - WINDOW SILL (FLUSH WITH PANEL)

SCALE 1:2

Disclaimer: These details are general design details for use as a guide. Any use is at their own discretion and risk.

EQUITONE Through-colour Fibre Cement EQ-08-VRF Visible Rivet Fix

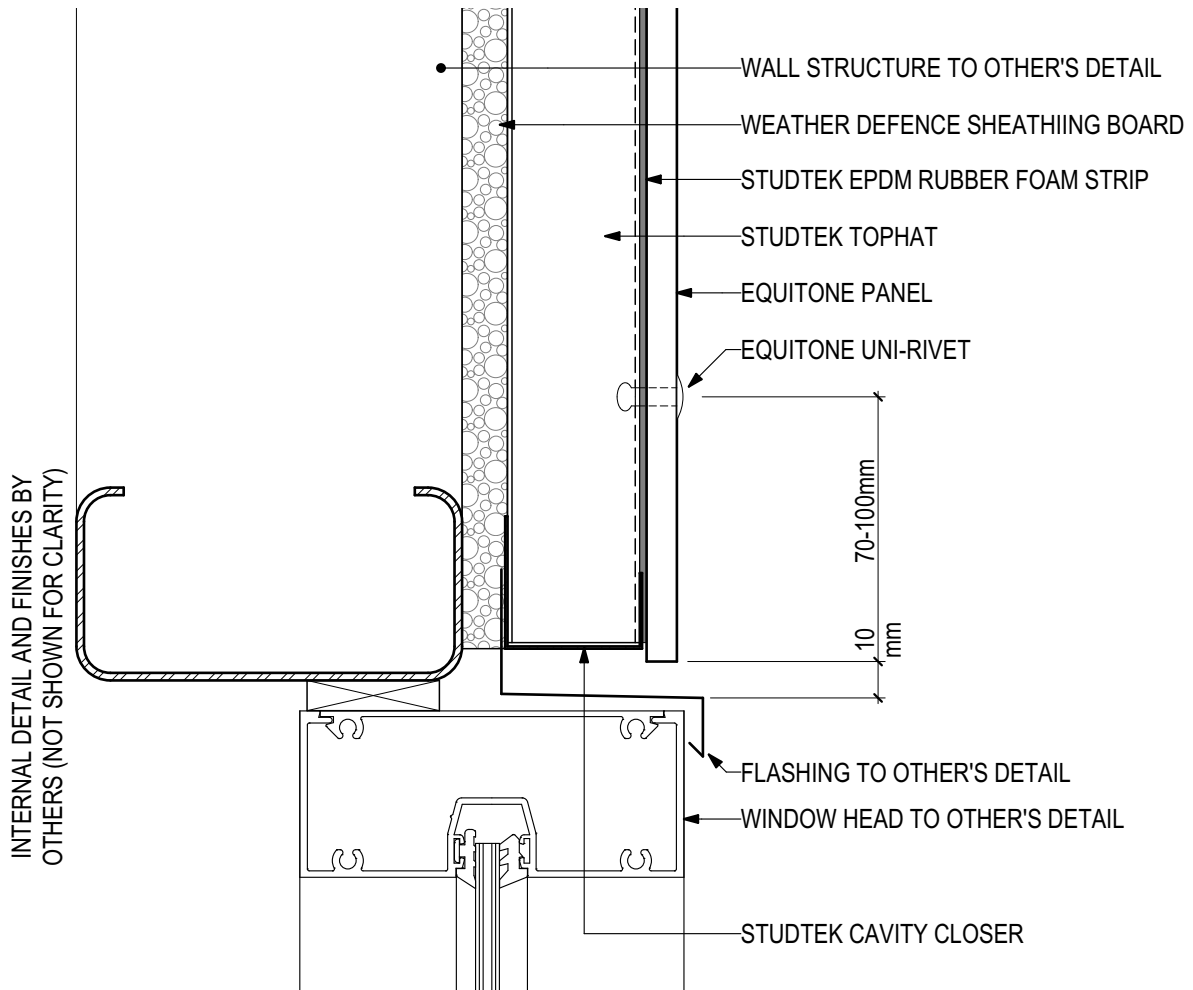


D.12 - WINDOW SILL (PANEL EXTENDED)

SCALE 1:2

Disclaimer: These details are general design details for use as a guide. Any use is at their own discretion and risk.

EQUITONE Through-colour Fibre Cement EQ-08-VRF Visible Rivet Fix

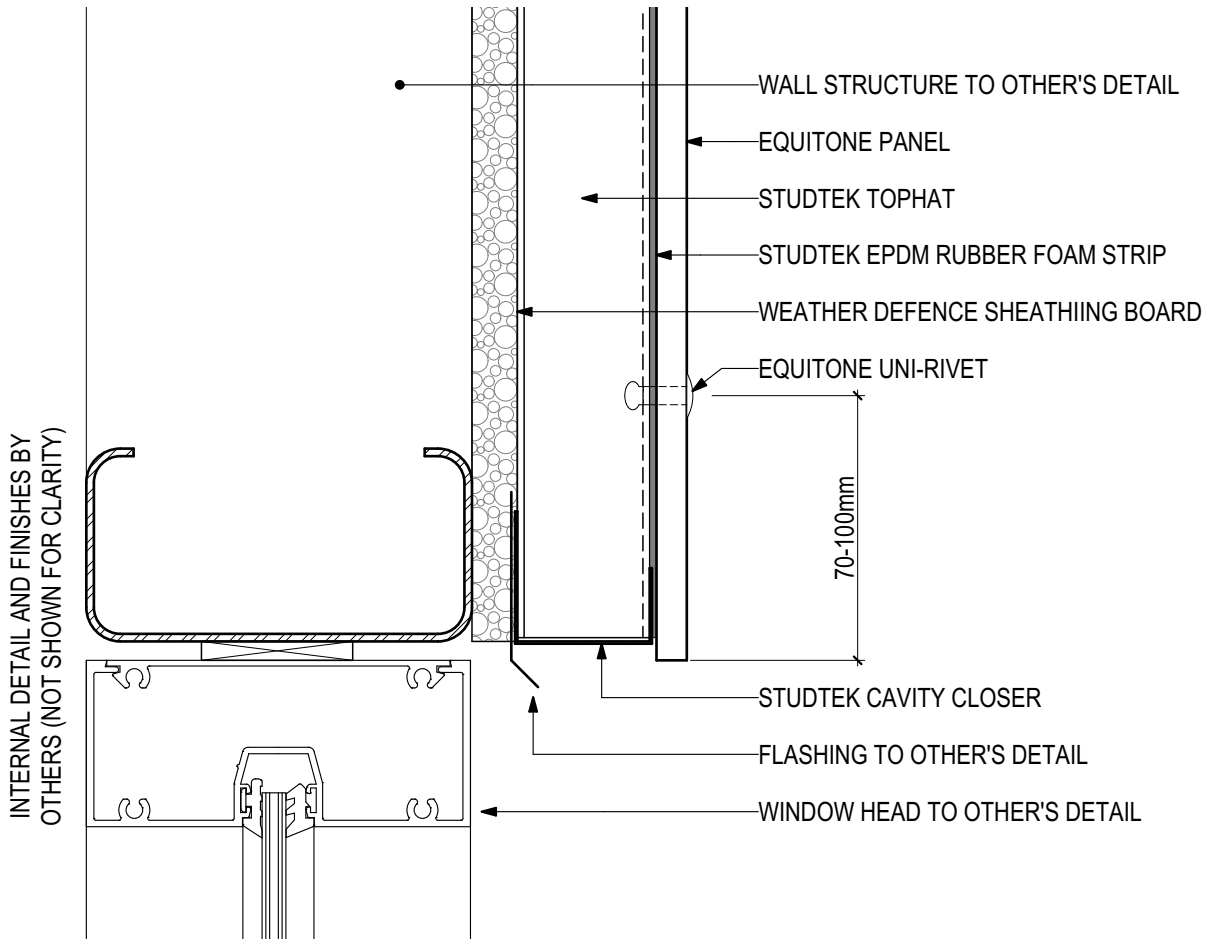


D.13 - WINDOW HEAD (FLUSH WITH PANEL)

SCALE 1:2

Disclaimer: These details are general design details for use as a guide. Any use is at their own discretion and risk.

EQUITONE Through-colour Fibre Cement EQ-08-VRF Visible Rivet Fix

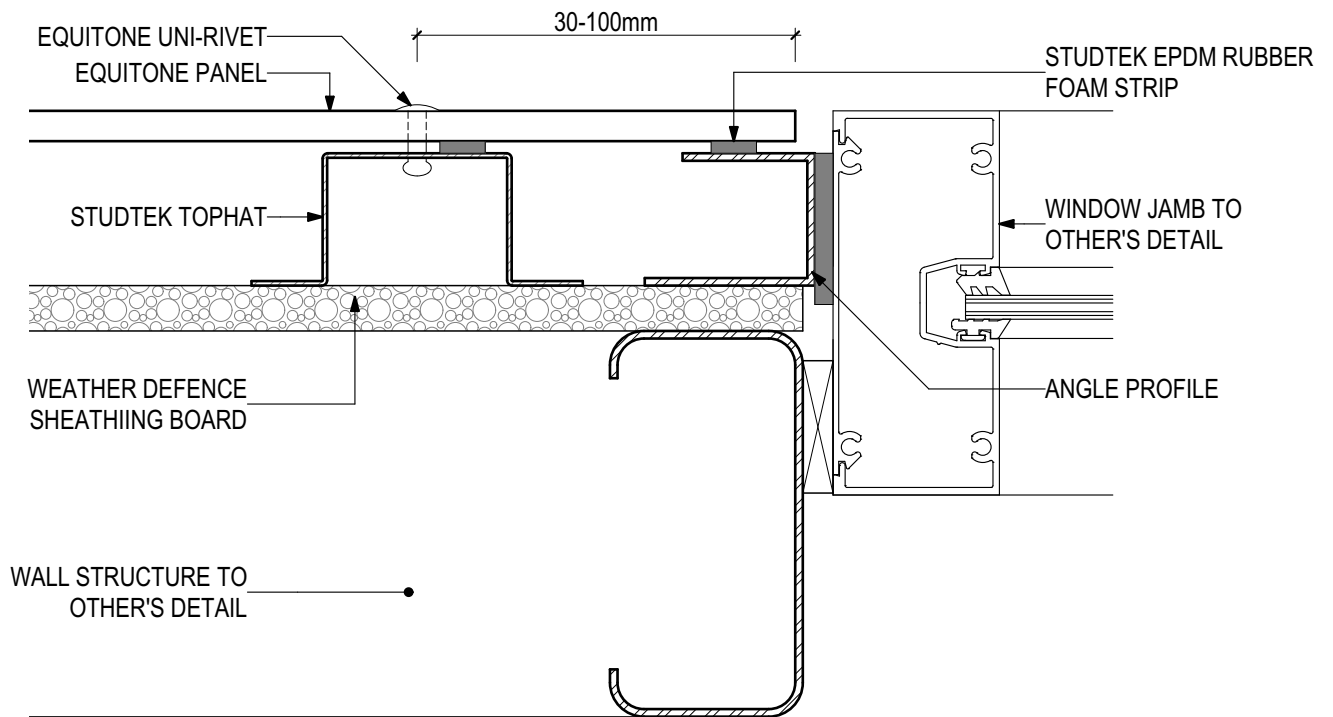


D.14 - WINDOW HEAD (PANEL EXTENDED)

SCALE 1:2

Disclaimer: These details are general design details for use as a guide. Any use is at their own discretion and risk.

EQUITONE Through-colour Fibre Cement EQ-08-VRF Visible Rivet Fix



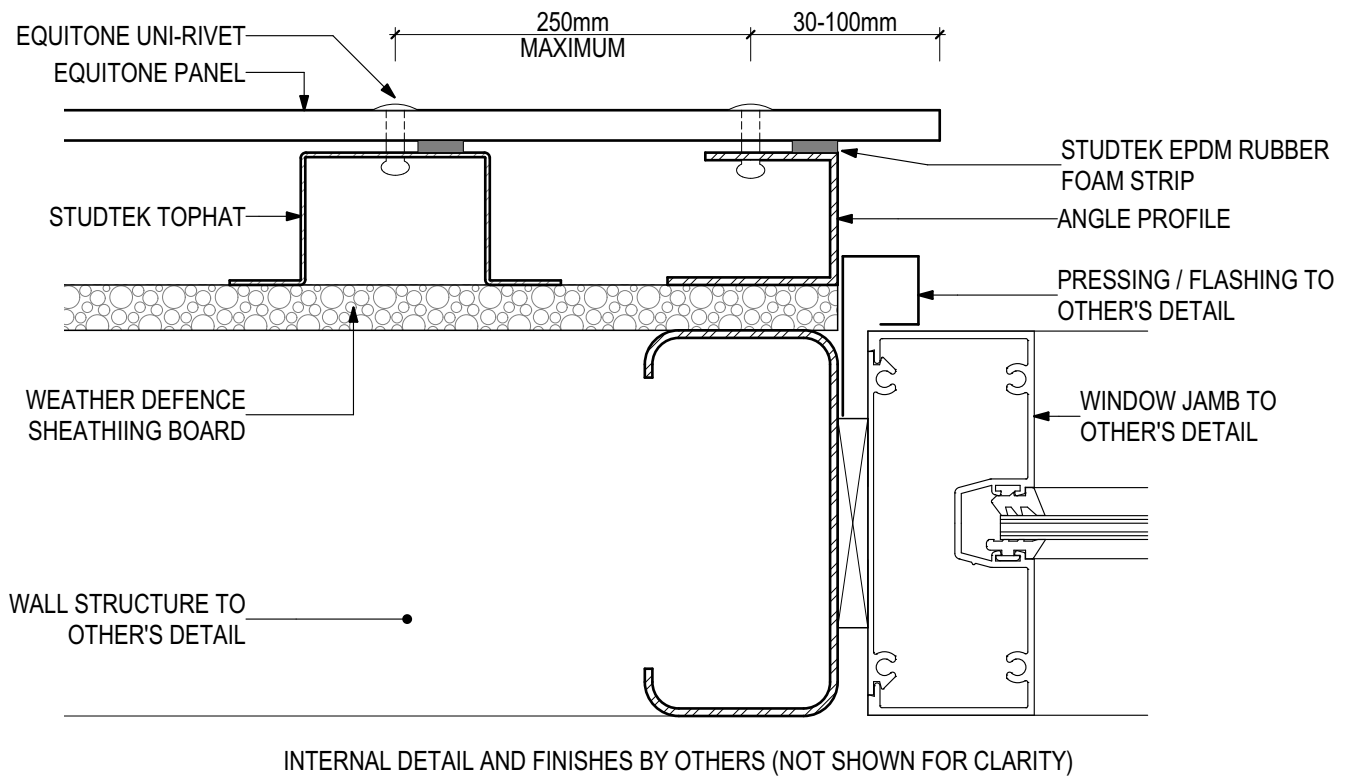
INTERNAL DETAIL AND FINISHES BY OTHERS (NOT SHOWN FOR CLARITY)

D.15 - WINDOW JAMB (FLUSH WITH PANEL)

SCALE 1:2

Disclaimer: These details are general design details for use as a guide.
Any use is at their own discretion and risk.

EQUITONE Through-colour Fibre Cement EQ-08-VRF Visible Rivet Fix

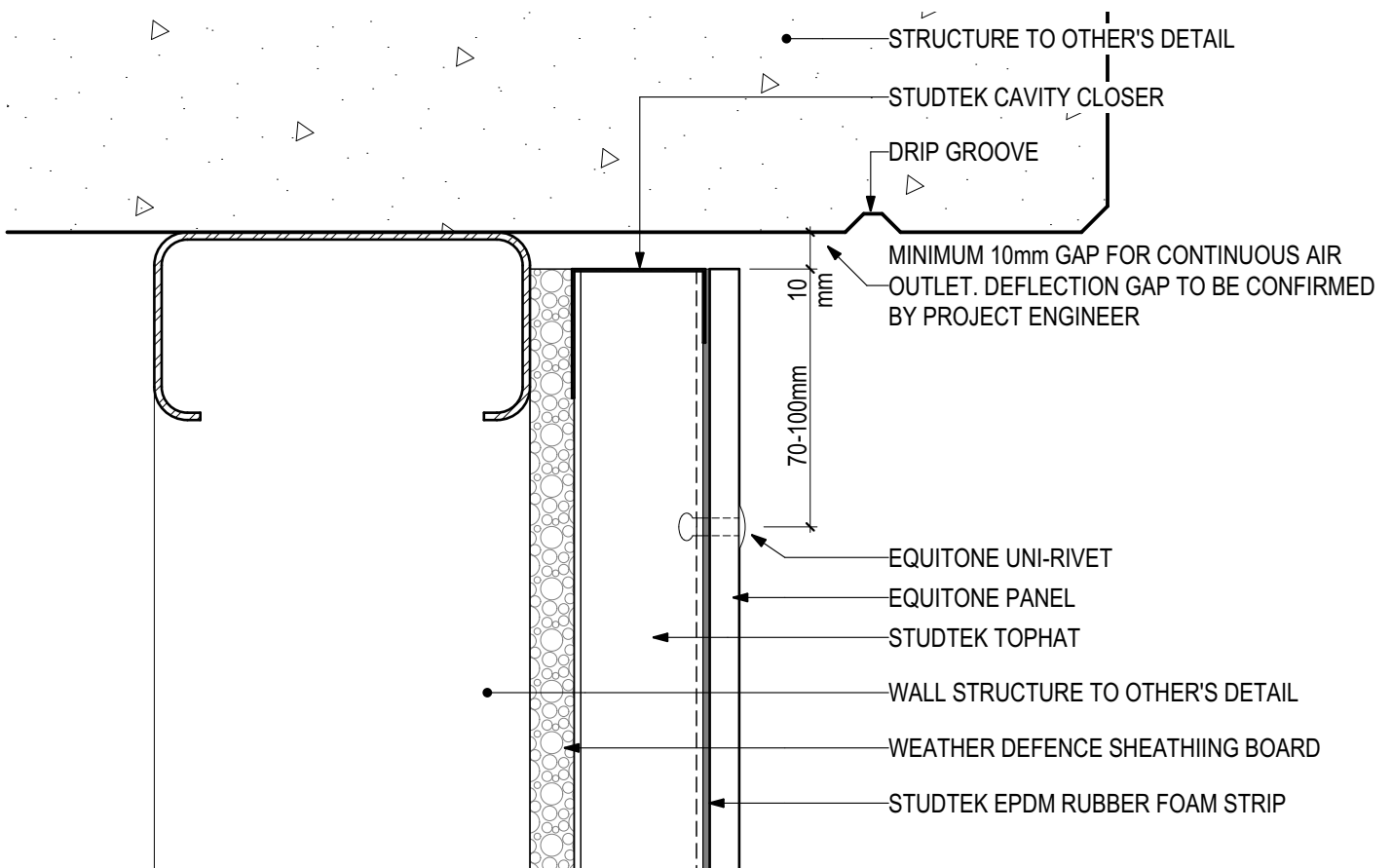


D.16 - WINDOW JAMB (EXTENDED PANEL)

SCALE 1:2

Disclaimer: These details are general design details for use as a guide. Any use is at their own discretion and risk.

**EQUITONE Through-colour Fibre Cement
EQ-08-VRF Visible Rivet Fix**

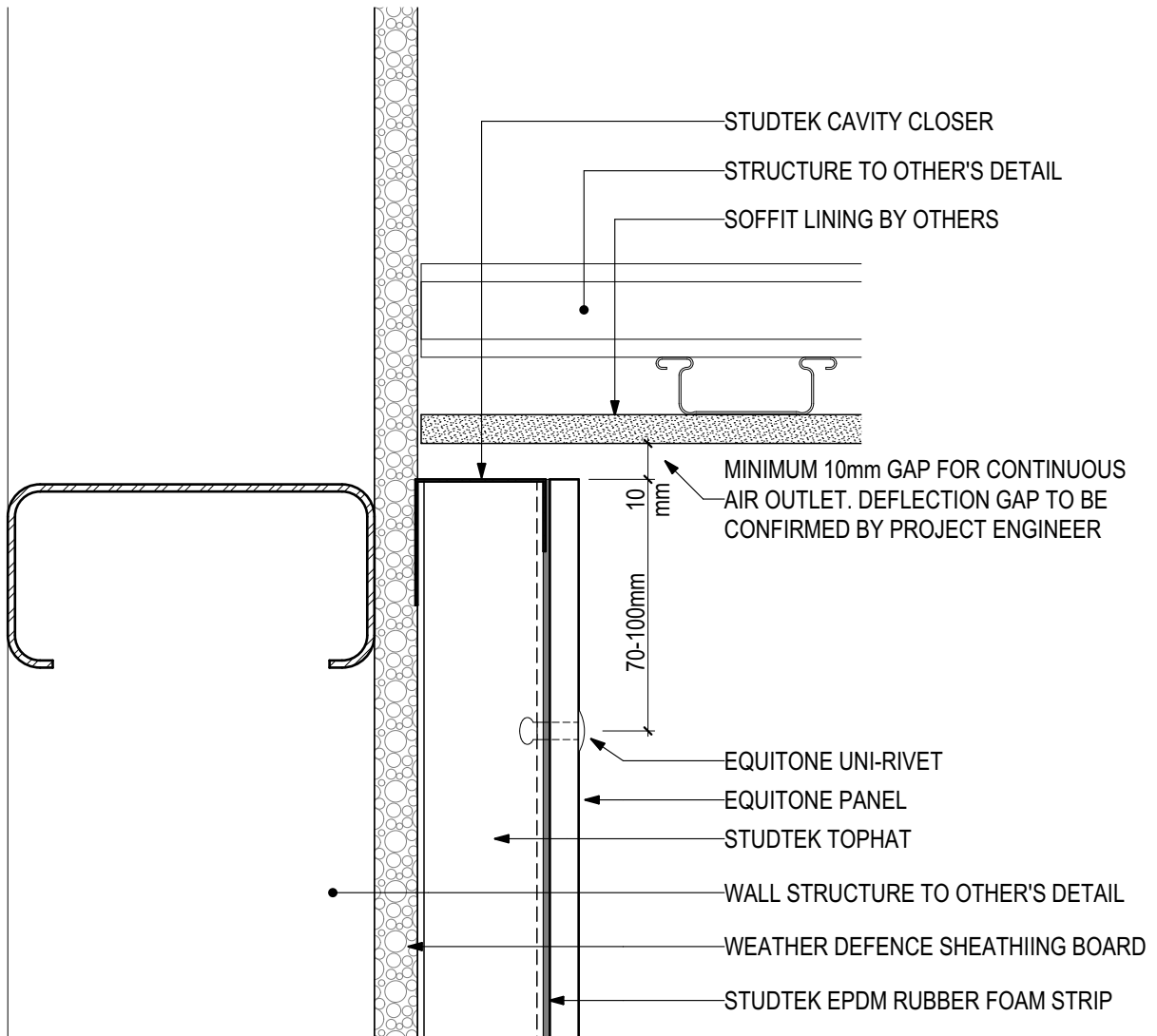


D.17 - METAL FRAMING DEFLECTION HEAD

SCALE 1:2

Disclaimer: These details are general design details for use as a guide. Any use is at their own discretion and risk.

EQUITONE Through-colour Fibre Cement EQ-08-VRF Visible Rivet Fix

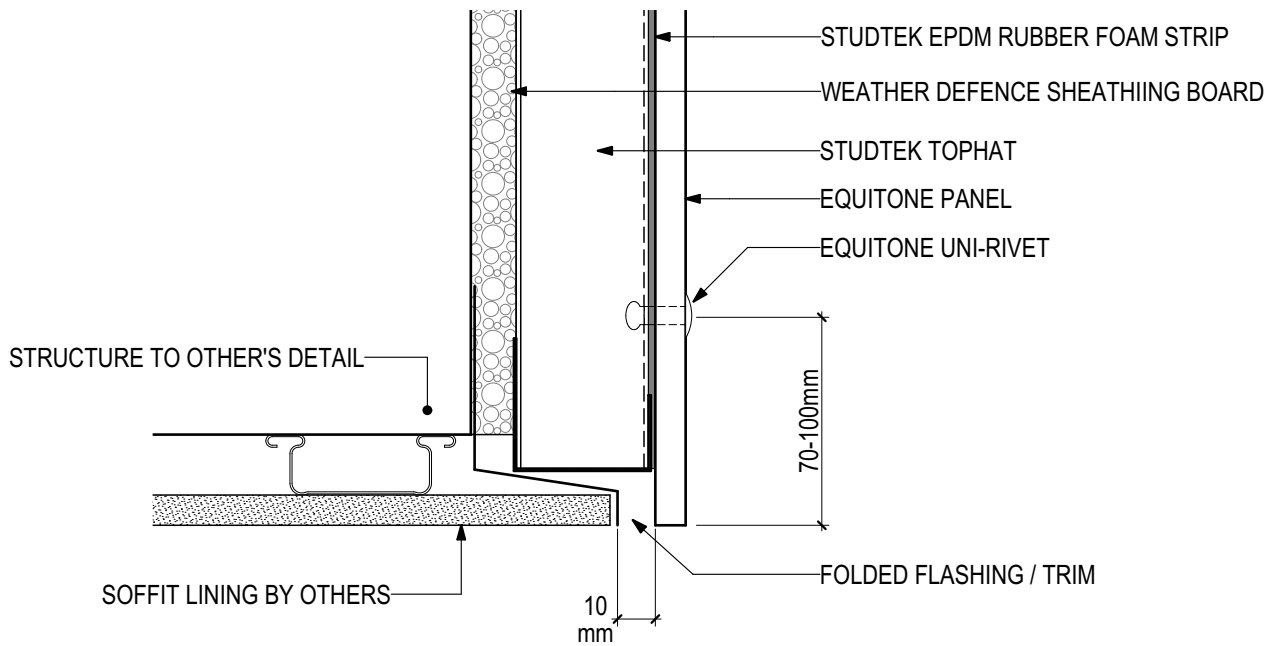


D.18 - SOFFIT JUNCTION

SCALE 1:2

Disclaimer: These details are general design details for use as a guide. Any use is at their own discretion and risk.

EQUITONE Through-colour Fibre Cement EQ-08-VRF Visible Rivet Fix

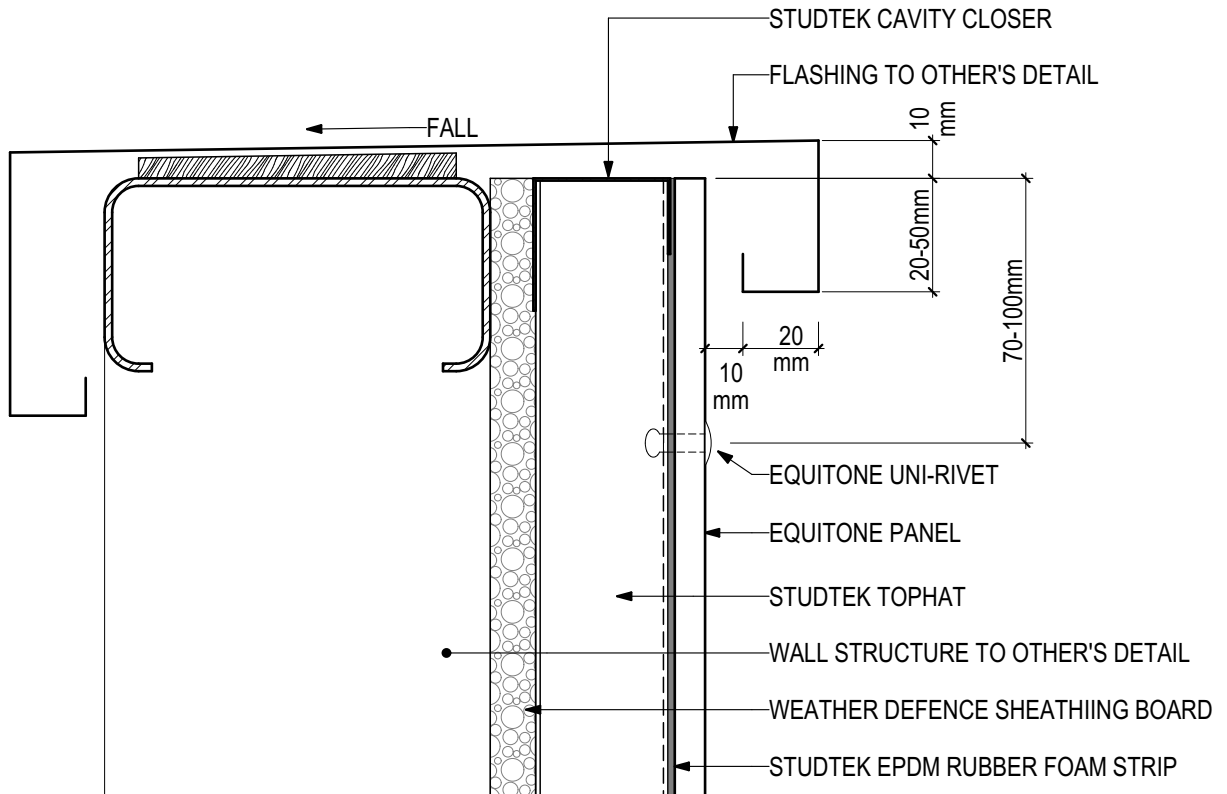


D.19 - EAVE JUNCTION

SCALE 1:2

Disclaimer: These details are general design details for use as a guide. Any use is at their own discretion and risk.

EQUITONE Through-colour Fibre Cement EQ-08-VRF Visible Rivet Fix



D.20 - PARAPET DETAIL

SCALE 1:2

Disclaimer: These details are general design details for use as a guide.
Any use is at their own discretion and risk.